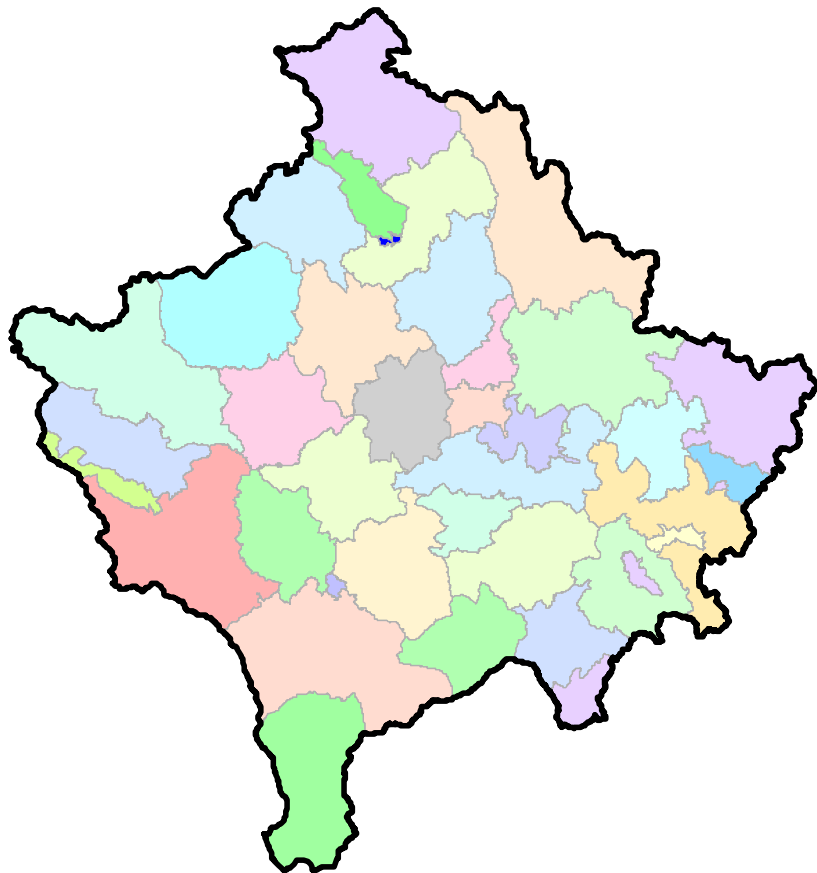




Republika e Kosovës
Republika Kosova-Republic of Kosovo
Qeveria - Vlada - Government
Zyra e Kryeministrit -Ured Premijera -Office of the Prime Minister
Agjencia e Statistikave të Kosovës - Agencija za Statistike Kosova - Kosovo Agency of Statistics

Series 4: Government Accounts Statistics

Gross Domestic Product 2008 2019



AGJENCIA E STATISTIKAVE TË KOSOVËS
AGENCIJA ZA STATISTIKE KOSOVA
KOSOVO AGENCY OF STATISTICS



Republika e Kosovës
Republika Kosova-Republic of Kosovo
Qeveria - Vlada - Government
Zyra e Kryeministrit -Ured Premijera -Office of the Prime Minister
Agjencia e Statistikave të Kosovës - Agencija za Statistike Kosova - Kosovo Agency of Statistics

Series 4: Economic Statistics

Gross Domestic Product 2008 2019



Publisher: Kosovo Agency of Statistics (KAS)
Publication date: September,2020
© Kosovo Agency of Statistics
Reproduction is authorized if the source is indicated
More information is available on Internet
<http://ask.rks-gov.net>

P r e f a c e

Gross Domestic Product (GDP) by economic activities and expenditure approach for 2019

Kosovo Agency of Statistics (KAS) publishes the data of Gross Domestic Product (GDP) for the year 2019 by economic activities and expenditure approach according to the ESA2010.

GDP at current prices in 2019 was 7,103.8 million euros.

Real growth in 2019 compared to 2018 was 4.94%.

GDP per capita for 2019 was 3,986 euros.

Real growth rate in the GDP by economic activities for the year 2019 was as follows:

Financial and insurance activities 12.1%, Public administration and defense; compulsory social security 9.2%, Agriculture, forestry and fishing 8.0%, Electricity, gas, steam and air conditioning supply 6.5%, Transportation and storage 6.5%, Human health and social work activities 6.4%, Accommodation and food service activities 6.4%, Manufacturing 5.3%, Wholesale and retail trade; repair of motor vehicles and motorcycles 4.3%, Construction 3.5%, Mining and quarrying 3.2%, Professional, scientific and technical activities 3.1%, Education 3.0%, Water supply; sewerage, waste management and remediation activities 2.6%, Administrative and support service activities 2.5%, Real estate activities 1.1%.

Decreases were in the following activities: Arts, entertainment and recreation -38.8%.

Real growth by the main components of GDP by expenditure approach for 2019 was:

Exports of services 20.8 %, Imports of services 19.0%, Final consumption of Government 9.6%, Gross fixed capital formation 6.8%, Exports of goods 3.7%. Imports of goods 2.8%, Final Consumption expenditure of NPISH 0.6%, Final consumption of households 0.3%.

This publication was prepared by: <http://esk.rks-gov.net/>

Fatmir Morina-director of department

Xhevrie Fetahu-chief of division

Ylli Shala- High officer

Ilir Mazrekaj- senior officer

Emine Bajrami- senior officer

Florie Krapic- senior officer

Nysret Sylejmani- senior officer

Besim Mehmeti- senior officer

Kaltrina Veselaj-senior officer

Pristine, September 2020

Chief Executive Officer
Isa Krasniqi

Abbreviation

BoPs	Balance of Payment
CIF	Cost, Insurance, Freight
COFOG	Classification of the Functions of Government
COICOP	Classification of Individual Consumption by purpose for households
CFC	Consumption of Fix Capital
EAA	Economic Accounts of Agriculture
ESA 2010	European System of Accounts, 2010
FOB	Free on Board
FISIM	Financial Intermediation Services Indirectly Measured
GDP	Gross Domestic Product
GFCF	Gross Fixed capital formation
GVA	Gross Value Added
HBS	Household Budget Survey
HFCE	Household Final Consumption Expenditure
IMF	International Monetary Fund
NACE Rev.2 Communaute	Nomenclature statistique des activites economiques dans la europeenne revision 1
NPISH	Non-Profit Institutions Serving Households
PIM	Perpetual Inventory Method
SUT	Supply and Use Tables
SNA	System of National Accounts

Contents

	Page
Gross Domestic Product by activities	4
Table1: Gross Domestic Product by economic activities at current prices 2008-2019	4
Table2: Gross Domestic Product by economic activities 2008-2019 in constant prices	5
Table 3: Structure of Gross Domestic product by economic activities 2008-2019	6
Gross Domestic Product by expenditure approach 2008-2019	7
Table 4: Gross Domestic Product in current prices 2008-2019	7
Table 5: GDP in constant prices (at prices of previous year) 2008-2019	8
Table 6: Structure of GDP by expenditure approach	9
Methodological notes	12

Gross Domestic Product 2008 – 2019

Gross Domestic Product by activities

**Table1: Gross Domestic Product by economic activities at current prices
2008-2019**

(in 000)

Nace Rev.2	Economic activities	Gross Value Added (GVA)											
		2008	2009	2010	2011	2012	2013	2014	2015	2016	2017	2018	2019
A	Agriculture, forestry and fishing	574.441	575.192	598.838	614.262	617.588	638.710	661.820	599.608	635.044	586.136	481.997	545.221
B	Mining and quarrying	119.055	92.225	136.399	124.087	114.049	118.288	116.411	118.447	126.698	146.914	145.462	145.109
C	Manufacturing	429.513	491.251	489.304	493.945	549.265	584.764	575.830	625.841	665.852	700.160	761.545	828.699
D	Electricity, gas, steam and air conditioning supply	83.265	93.106	108.249	123.450	128.280	144.870	156.739	191.221	211.821	230.777	233.085	247.953
E	Water supply; sewerage, waste management and remediation activities	19.684	25.564	29.936	34.287	36.620	52.059	47.078	48.344	44.870	48.380	47.091	46.118
F	Construction	257.919	266.846	283.165	361.886	341.199	352.185	335.153	397.314	395.438	513.474	584.952	606.260
G	Wholesale and retail trade; repair of motor vehicles and motorcycles	448.617	509.468	538.761	535.207	611.578	655.390	688.580	712.234	746.731	801.309	877.222	922.369
H	Transportation and storage	127.920	155.892	171.433	186.582	187.695	233.714	197.360	209.275	220.501	237.855	266.381	278.134
I	Accommodation and food service activities	21.629	22.196	27.477	34.843	39.082	49.795	52.093	60.094	71.861	80.517	85.981	94.394
J	Information and communication	30.712	33.330	34.547	42.113	54.359	53.279	109.251	108.985	111.556	115.841	125.063	124.667
K	Financial and insurance activities	127.888	128.666	151.483	173.521	192.621	213.264	221.158	212.086	175.836	197.336	237.817	269.428
L	Real estate activities	425.454	413.718	417.021	416.862	437.190	475.530	499.116	499.305	483.836	489.038	500.128	504.090
M	Professional, scientific and technical activities	43.008	49.880	51.586	62.086	72.106	74.587	76.593	90.861	93.868	96.113	97.762	99.929
N	Administrative and support service activities	8.275	12.530	12.114	19.635	22.422	21.577	34.082	33.859	37.189	43.212	47.254	51.575
O	Public administration and defence ; compulsory social security	431.462	417.523	434.705	476.976	497.788	495.527	499.169	454.493	485.893	476.617	522.208	561.141
P	Education	101.766	115.900	122.292	154.861	162.005	164.556	217.134	234.071	242.634	244.741	254.570	257.933
Q	Human health and social work activities	36.154	44.124	57.919	67.380	72.006	75.251	97.600	107.790	112.584	115.566	124.973	131.006
R	Arts, entertainment and recreation	2.583	3.648	11.333	15.394	20.262	23.754	22.932	23.653	24.955	26.395	27.563	17.597
S	Other service activities	1.491	7.816	10.550	7.484	10.898	8.409	9.353	12.744	12.871	13.000	13.130	14.599
T	Activities of households as employers; undifferentiated goods- and services-producing activities of households for own use	4	5	5	5	1	-	-	-	-	-	-	-
	GVA at basic prices	3.290.837	3.458.881	3.687.117	3.944.864	4.167.016	4.435.509	4.617.451	4.740.205	4.880.038	5.163.379	5.434.184	5.746.223
	Taxes on product	663.214	711.461	795.524	949.831	973.592	978.075	971.540	1.097.282	1.220.098	1.300.192	1.341.373	1.419.039
	Subsidies	(71.289)	(100.719)	(80.677)	(80.159)	(81.844)	(86.967)	(21.497)	(30.479)	(30.023)	(49.710)	(49.644)	(61.502)
	Gross Domestic Product	3.882.762	4.069.622	4.401.964	4.814.535	5.058.763	5.326.617	5.567.494	5.807.009	6.070.113	6.413.861	6.725.913	7.103.759

Gross Domestic Product 2008 – 2019

Table2: Gross Domestic Product by economic activities 2008-2019 in constant prices

		(in 000)										
Nace Rev.2	Economic activities	2009	2010	2011	2012	2013	2014	2015	2016	2017	2018	2019
A	Agriculture, forestry and fishing	598.306	583.262	600.286	561.766	626.312	643.883	634.700	618.100	652.148	523.877	520.480
B	Mining and quarrying	136.335	129.762	145.968	151.116	131.451	123.047	116.460	114.238	130.617	151.862	150.107
C	Manufacturing	478.750	499.952	461.253	567.724	585.050	577.245	603.672	643.248	686.148	729.855	802.132
D	Electricity, gas, steam and air conditioning supply	97.050	96.827	112.520	126.746	138.021	146.627	173.057	199.104	217.122	223.043	248.139
E	Water supply; sewerage, waste management and remediation activities	24.090	29.491	36.557	35.379	51.356	54.322	55.560	44.675	45.343	48.693	48.318
F	Construction	282.632	240.982	334.184	331.192	350.058	330.653	387.963	415.083	429.627	561.057	605.256
G	Wholesale and retail trade; repair of motor vehicles and motorcycles	484.820	565.306	544.962	564.213	638.730	708.775	714.134	743.406	780.094	862.282	914.680
H	Transportation and storage	133.484	177.711	219.205	199.747	217.726	232.851	211.606	218.277	226.671	247.549	283.726
I	Accommodation and food service activities	22.506	28.510	34.643	40.516	38.087	52.177	53.370	61.328	73.559	82.860	91.522
J	Information and communication	34.678	34.386	41.547	59.892	53.414	115.190	116.426	110.311	115.358	121.803	126.158
K	Financial and insurance activities	145.635	135.892	165.475	176.255	202.085	222.652	259.703	221.402	230.992	232.645	266.630
L	Real estate activities	425.258	413.921	415.941	421.706	455.278	465.944	499.315	501.599	496.492	502.635	505.846
M	Professional, scientific and technical activities	47.467	53.519	66.011	67.894	75.461	75.036	87.768	92.675	96.507	98.726	100.777
N	Administrative and support service activities	12.372	11.946	19.278	20.059	21.680	21.685	34.088	34.573	38.119	44.887	48.418
O	Public administration and defence; compulsory social security	380.431	392.296	440.177	485.660	505.884	459.833	430.657	457.033	470.288	522.054	570.043
P	Education	101.675	118.923	124.433	157.544	163.479	169.878	220.414	237.416	241.068	254.339	262.189
Q	Human health and social work activities	36.121	45.275	58.933	68.547	73.291	82.890	101.518	109.891	113.864	124.876	132.929
R	Arts, entertainment and recreation	3.545	11.812	15.050	20.347	23.452	26.978	23.328	23.940	25.422	26.991	16.881
S	Other service activities	7.675	11.265	8.578	11.964	8.517	9.164	10.322	12.977	13.023	13.180	13.385
T	goods- and services-producing activities of households for own use	5	5	5	1	-	-	-	-	-	-	-
	GVA at basic prices	3.452.833	3.581.047	3.845.006	4.068.267	4.359.332	4.518.832	4.734.060	4.859.275	5.082.462	5.373.214	5.707.616
	Taxes on product	669.151	700.279	825.885	963.159	958.805	894.331	1.091.796	1.213.998	1.293.691	1.334.666	1.411.944
	Subsidies	(99.551)	(77.054)	(76.252)	(81.619)	(85.277)	(21.412)	(30.358)	(29.903)	(49.512)	(49.446)	(61.257)
	GDP production in constant prices	4.022.433	4.204.272	4.594.638	4.949.807	5.232.860	5.391.751	5.795.498	6.043.370	6.326.641	6.658.434	7.058.302

Gross Domestic Product 2008 – 2019

Table 3: Structure of Gross Domestic product by economic activities 2008-2019

(in 000)

Nace Rev.2	Economic activities	Share of GDP by activities											
		2008	2009	2010	2011	2012	2013	2014	2015	2016	2017	2018	2019
A	Agriculture, forestry and fishing	14,8	14,1	13,6	12,8	12,2	12,0	11,9	10,3	10,5	9,1	7,2	8,1
B	Mining and quarrying	3,1	2,3	3,1	2,6	2,3	2,2	2,1	2,0	2,1	2,3	2,2	2,2
C	Manufacturing	11,1	12,1	11,1	10,3	10,9	11,0	10,3	10,8	11,0	10,9	11,3	12,3
D	Electricity, gas, steam and air conditioning supply	2,1	2,3	2,5	2,6	2,5	2,7	2,8	3,3	3,5	3,6	3,5	3,7
E	Water supply; sewerage, waste management and remediation activities	0,5	0,6	0,7	0,7	0,7	1,0	0,8	0,8	0,7	0,8	0,7	0,7
F	Construction	6,6	6,6	6,4	7,5	6,7	6,6	6,0	6,8	6,5	8,0	8,7	9,0
G	Wholesale and retail trade; repair of motor vehicles and motorcycles	11,6	12,5	12,2	11,1	12,1	12,3	12,4	12,3	12,3	12,5	13,0	13,7
H	Transportation and storage	3,3	3,8	3,9	3,9	3,7	4,4	3,5	3,6	3,6	3,7	4,0	4,1
I	Accommodation and food service activities	0,6	0,5	0,6	0,7	0,8	0,9	0,9	1,0	1,2	1,3	1,3	1,4
J	Information and communication	0,8	0,8	0,8	0,9	1,1	1,0	2,0	1,9	1,8	1,8	1,9	1,9
K	Financial and insurance activities	3,3	3,2	3,4	3,6	3,8	4,0	4,0	3,7	2,9	3,1	3,5	4,0
L	Real estate activities	11,0	10,2	9,5	8,7	8,6	8,9	9,0	8,6	8,0	7,6	7,4	7,5
M	Professional, scientific and technical activities	1,1	1,2	1,2	1,3	1,4	1,4	1,4	1,6	1,5	1,5	1,5	1,5
N	Administrative and support service activities	0,2	0,3	0,3	0,4	0,4	0,4	0,6	0,6	0,6	0,7	0,7	0,8
O	Public administration and defence ; compulsory social security	11,1	10,3	9,9	9,9	9,8	9,3	9,0	7,8	7,7	7,4	7,8	8,3
P	Education	2,6	2,8	2,8	3,2	3,2	3,1	3,9	4,0	4,0	3,8	3,8	3,8
Q	Human health and social work activities	0,9	1,1	1,3	1,4	1,4	1,4	1,8	1,9	1,9	1,8	1,9	1,9
R	Arts, entertainment and recreation	0,1	0,1	0,3	0,3	0,4	0,4	0,4	0,4	0,4	0,4	0,4	0,3
S	Other service activities	0,0	0,2	0,2	0,2	0,2	0,2	0,2	0,2	0,2	0,2	0,2	0,2
T	Activities of households as employers; undifferentiated goods and services-producing activities of households for own use	0,0	0,0	0,0	0,0	0,0	-	-	-	-	-	-	-
	BVSH me çmime bazë	84,8	85,0	83,8	81,9	82,4	83,3	82,9	81,6	80,4	80,5	80,8	80,9
	Taxes on product	15,2	15,0	16,2	18,1	17,6	16,7	17,1	18,9	20,1	20,3	19,9	20,0
	Subsidies												
	Gross Domestic Product	100	100	100	100	100	100	100,0	100,0	100,0	100,0	100,0	100,0

Gross Domestic Product 2008 – 2019

Gross Domestic Product by expenditure approach 2008-2019

Table 4: Gross Domestic Product in current prices 2008-2019

	(Million of Euro)											
	2008	2009	2010	2011	2012	2013	2014	2015	2016	2017	2018	2019
GDP at current prices	3.882,8	4.069,6	4.402,0	4.814,1	5.058,9	5.326,6	5.567,5	5.807,5	6.070,1	6.413,9	6.726,1	7.103,8
Final consumption expenditure	4.172,2	4.221,6	4.516,5	4.836,4	5.143,9	5.333,1	5.731,4	5.858,5	6.072,1	6.254,3	6.704,0	6.882,5
Final consumption of households	3.488,9	3.528,5	3.768,2	4.003,2	4.281,6	4.446,2	4.802,2	4.942,9	5.194,1	5.369,9	5.738,4	5.836,4
Final consumption of Government	659,8	668,1	722,3	802,1	842,1	863,9	910,4	893,9	853,9	862,6	943,1	1.023,0
Government of Kosovo	358,0	407,2	495,7	578,4	625,0	658,8	723,5	772,2	729,6	751,5	807,4	881,0
Donor (wages)	301,8	260,8	226,6	223,7	217,1	205,2	186,8	121,7	124,3	111,1	135,7	142,0
Final Consumption expenditure of NPISH	23,6	25,0	26,0	31,1	20,2	23,0	18,8	21,7	24,0	21,8	22,5	23,2
Gross capital formation	1.208,7	1.267,4	1.450,6	1.632,4	1.465,1	1.470,9	1.434,9	1.601,3	1.650,1	1.819,7	1.982,4	2.134,5
Gross fixed capital formation	1.052,7	1.129,8	1.301,2	1.475,9	1.316,8	1.322,6	1.293,8	1.498,9	1.550,4	1.728,5	1.887,8	2.038,3
Changes on inventories	156,0	137,6	149,4	156,5	148,3	148,3	141,0	102,4	99,6	91,1	94,7	96,3
Net export	-1.498,2	-1.419,4	-1.565,2	-1.654,7	-1.550,1	-1.477,4	-1.598,7	-1.652,3	-1.652,0	-1.660,1	-1.960,3	-1.913,3
Exports of goods and services	608,9	694,9	878,0	1.137,7	1.176,5	1.168,1	1.252,8	1.273,9	1.438,5	1.709,3	1.777,8	2.069,5
Exports of goods	216,6	177,2	305,0	324,9	287,0	305,1	324,3	322,5	307,9	378,4	375,8	393,2
Exports of services	392,4	517,6	573,0	812,8	889,5	863,0	928,6	951,5	1.130,6	1.330,9	1.401,9	1.676,3
Imports of goods and services	2.107,1	2.114,2	2.443,1	2.792,4	2.726,6	2.645,5	2.851,6	2.926,3	3.090,6	3.369,4	3.738,1	3.982,9
Imports of goods (FOB)	1.866,3	1.828,9	2.057,1	2.383,9	2.360,0	2.297,1	2.382,9	2.431,8	2.598,7	2.842,6	3.106,7	3.233,5
Imports of services	240,8	285,3	386,1	408,5	366,6	348,4	468,7	494,5	491,8	526,8	631,3	749,4
GDP per capita (Euro)	2.258	2.329	2.480	2.672	2.799	2.935	3.084	3.277	3.386	3.566	3.746	3.986

Gross Domestic Product 2008 – 2019

Table 5: GDP in constant prices (at prices of previous year) 2008-2019

(Million of Euro)

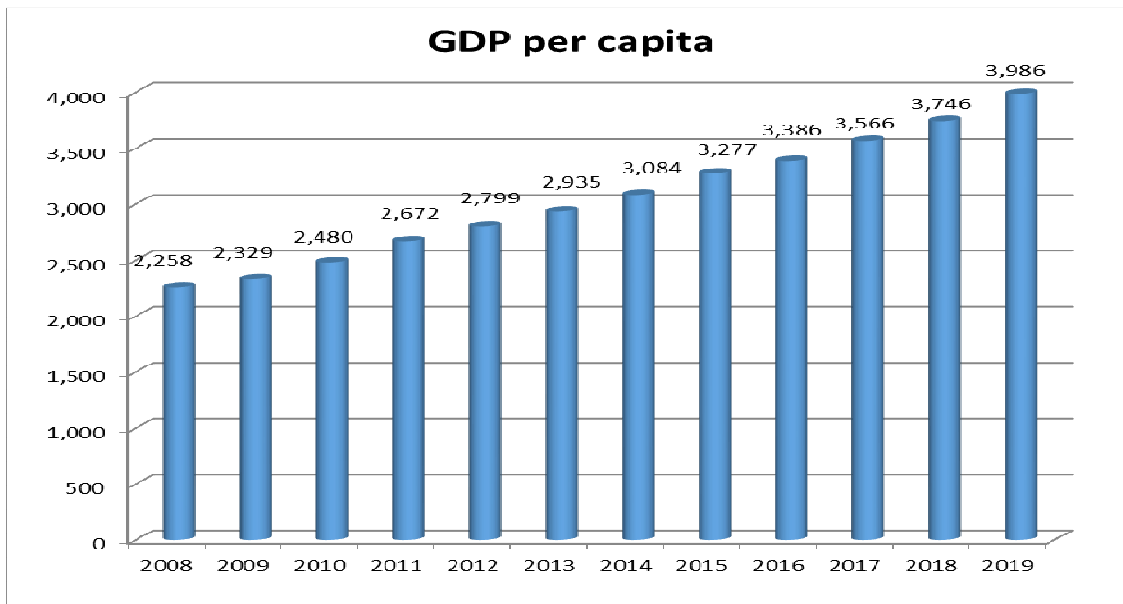
	2008	2009	2010	2011	2012	2013	2014	2015	2016	2017	2018	2019
GDP at constant prices	3.616,1	4.022,4	4.204,3	4.594,6	4.949,8	5.232,8	5.391,7	5.795,5	6.043,4	6.326,6	6.658,6	7.058,3
Final consumption expenditure	3.912,8	4.218,2	4.325,1	4.652,0	5.104,3	5.437,8	5.742,6	5.994,2	6.131,5	6.162,8	6.590,2	6.809,6
Final consumption of households	3.268,9	3.569,3	3.651,5	3.900,3	4.264,3	4.548,3	4.881,6	5.113,3	5.267,0	5.289,3	5.627,9	5.753,6
Final consumption of Government	620,8	624,3	648,4	722,8	820,0	869,6	842,3	851,2	837,8	849,2	939,6	1.033,4
Government of Kosovo	323,5	367,4	429,5	506,6	605,1	649,6	674,0	737,8	716,5	740,1	804,1	888,9
Donor (wages)	297,3	257,0	218,9	216,2	214,9	220,1	168,3	113,4	121,3	109,1	135,5	144,5
Final Consumption expenditure of NPISH	23,1	24,5	25,1	29,0	20,0	19,9	18,7	29,7	26,7	24,2	22,7	22,6
Gross capital formation	1.123,7	1.340,3	1.405,0	1.565,0	1.422,3	1.460,2	1.397,9	1.596,5	1.721,3	1.742,2	1.966,9	2.111,7
Gross fixed capital formation	979,9	1.194,7	1.254,2	1.407,1	1.274,7	1.314,1	1.278,7	1.450,0	1.608,2	1.638,8	1.834,3	2.016,8
Changes on inventories	143,8	145,6	150,8	157,9	147,6	146,1	119,2	146,5	113,1	103,4	132,5	94,9
Net export	-1.420,4	-1.536,0	-1.525,8	-1.622,4	-1.576,8	-1.665,2	-1.748,8	-1.795,2	-1.809,5	-1.578,3	-1.898,4	-1.863,0
Exports of goods and services	547,1	683,9	781,5	907,0	948,3	944,7	1081,9	1119,1	1.304,3	1.679,5	1.774,6	2.083,0
Exports of goods	188,3	193,2	227,9	309,4	320,8	323,8	319,1	314,1	308,1	376,2	370,8	389,9
Exports of services	358,8	490,6	553,6	597,6	627,5	620,9	762,8	805,0	996,2	1.303,3	1.403,8	1.693,1
Imports of goods and services	1.967,5	2.219,9	2.307,3	2.529,3	2.525,1	2.609,9	2.830,7	2.914,3	3.113,8	3.257,8	3.673,0	3.946,0
Imports of goods (FOB)	1.734,4	1.935,5	1.927,3	2.180,8	2.239,1	2.291,9	2.396,4	2.455,8	2.640,7	2.735,0	3.027,8	3.194,4
Imports of services	233,1	284,4	380,0	348,6	286,0	318,0	434,3	458,5	473,1	522,8	645,2	751,6
GDP Real growth rate	4,5	3,6	3,3	4,4	2,8	3,4	1,2	4,1	4,1	4,2	3,8	4,94

Gross Domestic Product 2008 – 2019

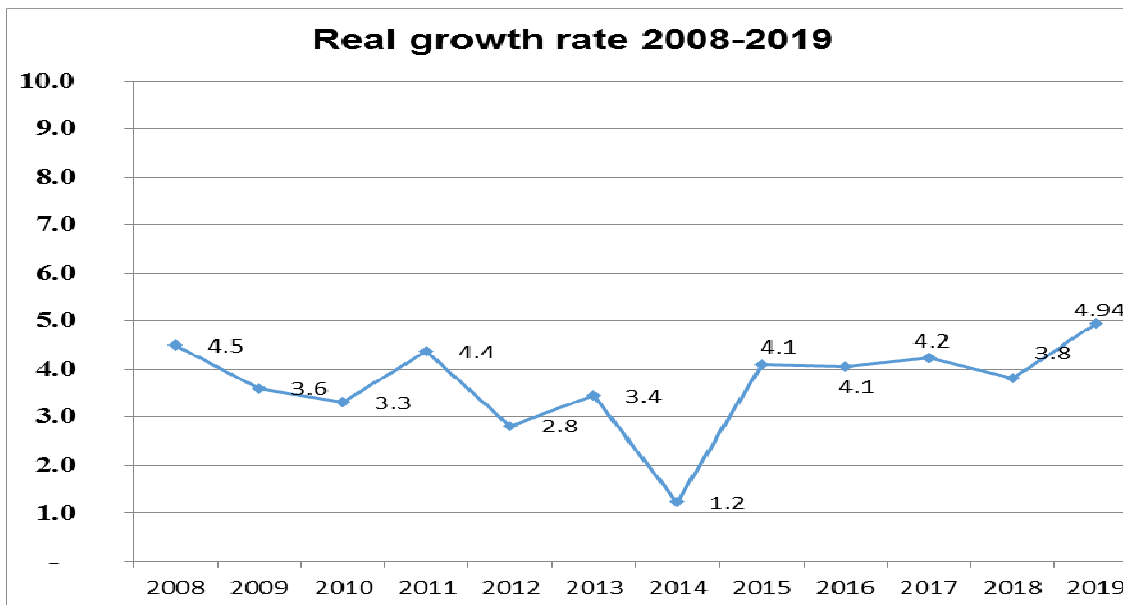
Table 6: Structure of GDP by expenditure approach

	2008	2009	2010	2011	2012	2013	2014	2015	2016	2017	2018	2019
GDP at current prices	100,0	100,0	100,0	100,0	100,0	100,0	100,0	100,0	100,0	100,0	100,0	100,0
Final consumption expenditure	107,5	103,7	102,6	100,5	101,7	100,1	102,9	100,9	100,0	97,5	99,7	96,9
Final consumption of households	89,9	86,7	85,6	83,2	84,6	83,5	86,3	85,1	85,6	83,7	85,3	82,2
Final consumption of Government	17,0	16,4	16,4	16,7	16,6	16,2	16,4	15,4	14,1	13,4	14,0	14,4
Government of Kosovo	9,2	10,0	11,3	12,0	12,4	12,4	13,0	13,3	12,0	11,7	12,0	12,4
Donor (wages)	7,8	6,4	5,1	4,6	4,3	3,9	3,4	2,1	2,0	1,7	2,0	2,0
Final Consumption expenditure of NPISH	0,6	0,6	0,6	0,6	0,4	0,4	0,3	0,4	0,4	0,3	0,3	0,3
Gross capital formation	31,1	31,1	33,0	33,9	29,0	27,6	25,8	27,6	27,2	28,4	29,5	30,0
Gross fixed capital formation	27,1	27,8	29,6	30,7	26,0	24,8	23,2	25,8	25,5	27,0	28,1	28,7
Changes on inventories	4,0	3,4	3,4	3,2	2,9	2,8	2,5	1,8	1,6	1,4	1,4	1,4
Net export	-38,6	-34,9	-35,6	-34,4	-30,6	-27,7	-28,7	-29,7	-29,7	-29,8	-35,2	-34,4
Exports of goods and services	15,7	17,1	19,9	23,6	23,3	21,9	22,5	22,9	25,8	30,7	31,9	37,2
Exports of goods	5,6	4,4	6,9	6,7	5,7	5,7	5,8	5,8	5,5	6,8	6,8	7,1
Exports of services	10,1	12,7	13,0	16,9	17,6	16,2	16,7	17,1	20,3	23,9	25,2	30,1
Imports of goods and services	54,3	52,0	55,5	58,0	53,9	49,7	51,2	52,6	55,5	60,5	67,1	71,5
Imports of goods (FOB)	48,1	44,9	46,7	49,5	46,7	43,1	42,8	43,7	46,7	51,1	55,8	58,1
Imports of services	6,2	7,0	8,8	8,5	7,2	6,5	8,4	8,9	8,8	9,5	11,3	13,5

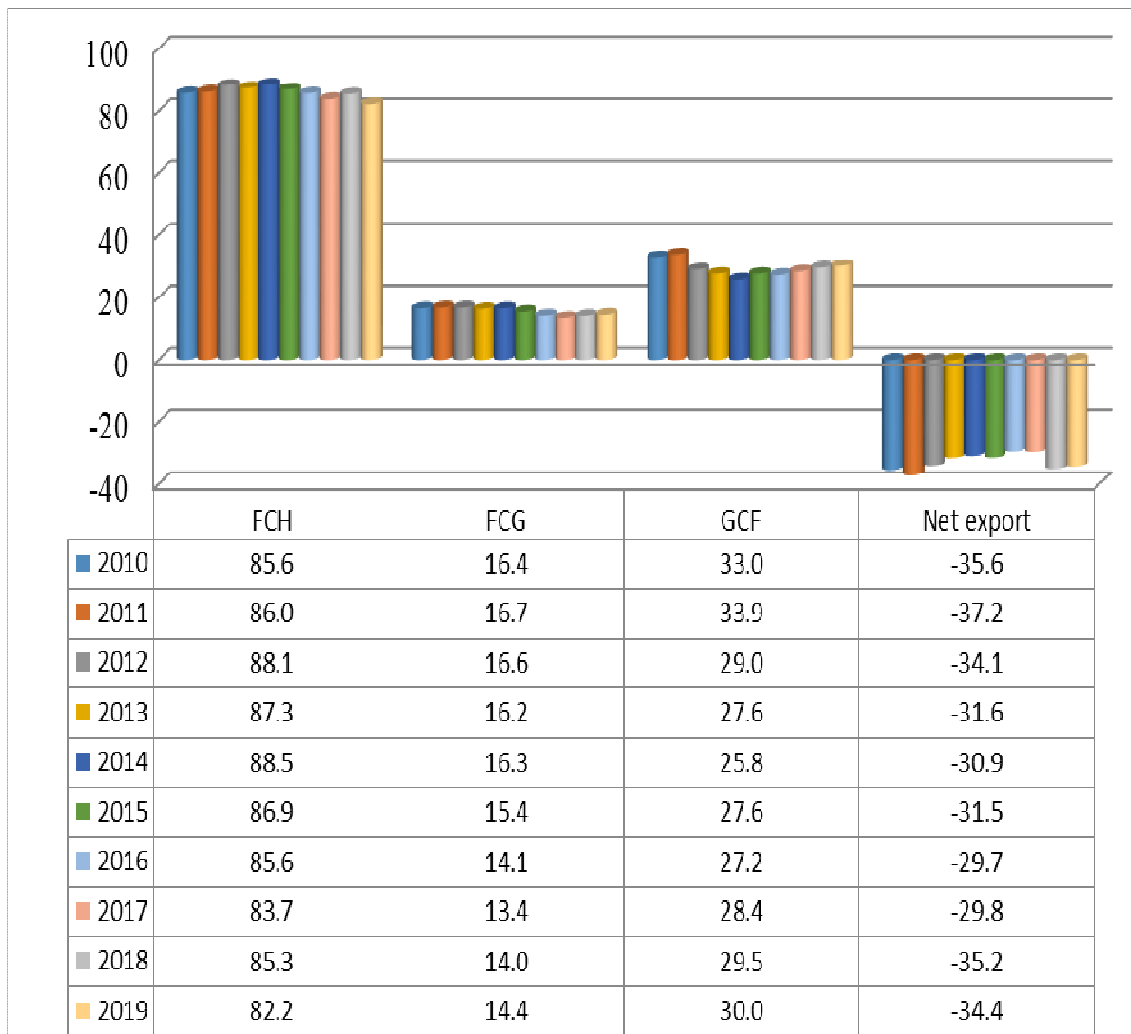
Graph 1 GDP per capita



Graph 2 real growth rate



Graph 3 Consumption expenditure



Methodological notes

I. GROSS DOMESTIC PRODUCT (GDP)

The most important economic aggregates emanating from the national accounts is Gross domestic product (GDP), a measure of the economic performance of a country in a given period of time .

There are three approaches for compilation of the GDP: production approach, expenditure and income approach.

GDP by production approach is equal to the total gross value added for all economic activities, plus taxes on products less subsidies on products.

It deserves notice, that GDP measure production by resident units irrespectively of the location of the productive activity.

Production approach:

$$\text{GDP} = \text{GVA} + \text{TP} - \text{SP}$$

Where:

GDP = Gross domestic product (market price)

GVA = Gross value added (basic price)

TP = Taxes on products

SP = Subsidies on products

1. Output

Output is measured in a given time period as the value of the goods and services produced by resident establishments. Output can either be delivered to other units or it may be used for own-account consumption or own-account gross fixed capital formation.

2. Intermediate consumption

Intermediate consumption is the total value of inputs used, consumed or transformed in the production process. Intermediate consumption includes goods and services produced by other economic units only (own production is excluded from that). Similarly to output, it is measured in a given time period.

3. Value added

Value added is a vital production economic concept that refers to the value generated by a unit engaged in productive activity. Gross value added is defined as total output minus intermediate consumption. Value added is calculated separately for each resident activity in an economy. It provides an important measurement of productive activity at detailed level.

Expenditure approach:

The GDP by expenditure approach is derived as the sum of all final expenditures on goods and services. These final expenditures are grouped into three big categories: Final consumption, Gross Capital Formation and Net exports (E-I). Since the GDP measures domestic production, the value of expenditures on imports is subtracted from all other expenditures, using the following formula:

$$\text{GDP} = \text{FC} + \text{GCF} + (\text{E}-\text{I})$$

FC = final consumption

GCF = gross capital formation

E = export

I = import

Components of the Gross Domestic Product

Household Final Consumption

The household consumption is the main component of GDP by expenditure approach and represents the costs of the resident households, in order to obtain goods and services necessary for their needs and demands. It includes not only directly paid for goods and services, but also the acquisition through income in kind or from own production.

The total Household consumption was derived from the Household Budget Survey, which is organized in KAS.

Final consumption expenditure of General Government

Government final consumption is measured as the sum of purchases of goods and services, compensation of employees and consumption of fixed capital less receipts from sales.

Gross capital formation

Based on ESA2010 methodology, the GCF represents the sum of the Gross fixed capital formation and changes in inventories.

The estimation of Gross Fixed Capital Formation covers acquisitions less disposals of tangible assets and major improvements to tangible non-produced assets, which are used more than one year. The estimates on the GFCF include the following types of assets: dwellings, other buildings and structures, machinery and equipment.

Main data source for investments are import data for the machinery and equipment. Also the domestic production of construction material is used.

The changes in inventories are measured by the value of the entries into inventories less the value of withdrawals and the value of any recurrent losses of goods held in inventories. The estimation of the changes in inventory is based on the results of the Structural Business Survey, carried out by KAS.

Final Consumption of Non-Profit Institutions Serving Households
Non-profit institutions include the non-profit organizations (NGO).

Export and Import of goods and services

Export of goods and services consist of transactions in goods and services from residents to non-residents.

Import of goods and services consist of transactions in goods and services from non-residents to residents.

The export and import of goods data are provided by the Customs of Kosovo, while the export and import of services are provided by Balance of Payment (BoP) elaborated by CBK.

Data sources

Statistical data sources

Results of surveys and publications carried out by KAS as: household budget survey, labor force survey, agriculture household survey and KAS publications;

Foreign trade statistics: import and export of goods;

Consumer Price Index, import price indices, producer price indices and other indices collected in KAS;

Final data of Census Population 2011 and estimation of the population

Administrative data sources:

Ministry of Finance concerning the budget and treasury data;

Central Bank of Kosovo, Balance of Payment and other data;

Ministry of Public Administration, concerning the NGO data;

Ministry of Agriculture, concerning agriculture data;

Kosovo Tax Administration-tax data.

Kosovo Agency of Statistics

short description

Kosovo Agency of Statistics is a professional institution which deals with collection, processing and publication of official statistical data. As such acts since 1948 and has passed through several historical stages, structured according to state regulation of those times.

On 2 August 1999, the Agency has resumed his professional work (after nine years of interruption of all statistical series detrimental to the interest of Kosovo), as an independent institution under the Ministry of Public Administration. Since 12.12.2011 the Agency operates in the frames of the Prime Minister's Office. Office is funded by the Kosovo Consolidated Budget, but also by donors for specific projects and for technical professional support.

Kosovo Agency of Statistics acts according to the Law No. 04/L-036 which entered into force on 12.12.2011 and Amendment of Law No. 06/L-058 which entered into force on 17.01.2019 . Programme of Official Statistics 2018/2022 is in implementation for the development of statistical system in correlation with the European Union statistics (EUROSTAT).

Kosovo Agency of Statistics has this organizational structure: production departments; Department of Economic statistics, Department of National Accounts, Department of Agriculture and Environment statistics and Department of Social statistics. **Support Departments**; Department of Methodology and Information Technology, Department of Policy Planning, Coordination and Communication, Department of Census and survey and Department of Administration. **Within the Agency are also established Regional Offices**; Gjakove, Gjilan, Mitrovica, Peja, Prizren, Pristina and Ferizaj

In KAS are employed in total 156 workers, of whom 115 at the headquarters of the Agency, while in the Regional Offices, 41. Agency's educational qualifying structure is as follows: 123 with university education, 15 with with non-tertiary education, and 18 with secondary education.

We have professional and technical cooperation with all Ministries of the Government of Kosovo, especially with the Ministry of Economy and Finance, Central Bank of Kosovo, with international institutions, EUROSTAT, International Monetary Fund, World Bank, Sweden's SIDA, DFID, UNFPA, UNDP, UNVEF, and with the statistical institutions of the countries in the region.

Kosovo Agency of Statistics almost completely covers the territory of Kosovo, based on the statistical structure of the enumeration areas as the basic unit and sole in the country from which it gets first hand information. All surveys conducted in the field use the extension of the samples in these enumeration areas but also a statistical methodology according to international recommendations. During the collection of statistical data and reports from reporting entities are involved professionals, technicians, administrators, servants of the country offices, field enumerators from regional offices, etc.

In 2011, the project of Population Census , Households and Dwellings was successfully implemented, and in 2014 was successfully carried out the Agriculture Census. The result obtained from these censuses will have an important role in the development policies.

The mission of the Agency; to meet the needs of users with qualitative statistical data, objective, in time and space so that users have reliable base to conduct regular analysis in the interest of planning and project development at the municipal and country level. To support government institutions, scientific institutes, research academies, businesses in order to provide proper information for decision-makers and other users in Kosovo.

- **Address: KOSOVO AGENCY OF STATISTICS**
Street. "Zenel Salihu", No. 4, 10000 Pristina
- **Telephone:** +383 (0) 38 200 31 129
CEO: +383 (0) 38 200 31 112
- **Fax::** +383 (0) 38 235 033
- **E-mail:** infoask@rks-gov.net
- **Web:** <http://ask.rks-gov.net>