



Republika e Kosovës
Republika Kosova-Republic of Kosovo
Qeveria - Vlada - Government
Zyra e Kryeministrit -Ured Premijera -Office of the Prime Minister
Agjencia e Statistikave të Kosovës - Agencija za Statistike Kosova - Kosovo Agency of Statistics

Series 2: Agriculture and Environment Statistics

Output Price Index and Prices in Agriculture Q2 2019 (2015 =100)



Foreword

Kosovo Agency of Statistics, respectively the Department of Agriculture and Environment Statistics, has started to collect data on agriculture output prices since November 2003. At the beginning, the number of items was limited. With the change of the base year from 2003 to the base year of 2005, prices have been collected for 64 different agricultural outputs. Whereas, with the change of the base year 2005 to 2010, prices for 67 agricultural outputs were collected. Currently, with the change of the base year from 2010 to the base year 2015, prices are collected for 71 different agricultural outputs. The purpose of the agricultural output index is to measure the price movements for the products sold by the farmer. The plan for the future is to increase the number of outputs. In addition to the output price index is also the input price index.

This is the fifty-five publication (55) on the agriculture output price index and the average absolute prices of agriculture outputs, prepared by the Kosovo Agency of Statistics. In this publication, the agriculture output price index has been presented for some major agricultural products.

KAS thanks the Swedish International Development Cooperation Agency (SIDA) for their support for building the agro-monetary statistical system. KAS also thanks all collaborators of its regional offices, other co-operators (respondents) of point-of-sale places such as: agricultural farms, industrial enterprises, trade, etc.

In particular, KAS thanks Swedish price statistics expert, Mr. Anders Grönvall and others who directly or indirectly assisted in finalizing this publication.

Suggestions and remarks regarding this publication can be sent to the department's email address: agriculture@ks-gov.net

Publication was prepared by:

Chief Executive Officer, KAS
Isa Krasniqi

Bajrush Qevani – Director of Department,
Violeta Arifi – Gashi – Head of Division,
Kademsha Bajramaga – Officer.

Prishtina, August 2019

Abbreviations and Acronyms

KAS	Kosovo Agency of Statistics
API	Agriculture Price Index
EU	European Union
SIDA	Swedish International Development Cooperation Agency
Q2	Second quarter

Key to symbols

.	Not applicable
‰	Promile

In the tables where figures have (weight) have been rounded to the nearest final digit might be a slight discrepancy in the sum.

C o n t e n t s

Output Price Index for agriculture products	4
Agricultural Output Price Index Q2	6
Monthly Agricultural Output Price Index	6
Changes in Output Price Index	8
Monthly Absolute Average Price for some agriculture products.....	9
Methodology	12
Questionnaire	14

Output Price Index for agriculture products

The data presented in this publication include data on the monthly index covering the period from April to Jun of the year 2019 with the base year 2015=100. To make the comparisons and to observe the changes, data for the first quarterly (Q2) 2015-2019 are presented in the base year of 2015 (2015 = 100)

KAS has changed the base year from 2010=100 in 2015=100 according to Eurostat methodology.

In this publication are collected the prices of local agriculture outputs in Kosovo. Price collection is done in markets, farms and other places.

The products that make up the base for the agriculture output price index are divided into two main groups: Crop and Animal Output (plant and livestock products).

Within crop output, prices are collected for these groups: cereals forage plants, vegetables, potatoes and fruits.

In animal output, prices have been collected for livestock and livestock products. Within livestock, prices are collected for four categories of animals: cattle, sheep, pigs and poultry. These prices are based on live weight of animals. Within livestock the output prices are collected for: milk, eggs and honey. All prices are calculated in Euro and the units are in kg, liter and pieces.

Figure 1, 2 and 3 shows Monthly Output Price Index from January - December 2018 and second quarter 2019 for Total Output as well as for Crop and Animal Output (2015 = 100).

In the second quarter 2019 the index for Animal Output has increased by (2.89%) compared to the same period 2018. The index for Crop Output has increased by (6.83%) compared to the same period 2018. Total Output Index has also increased compared to the same period 2018 by (4.06 %).

Figure 1: Monthly Output Price Index for Crop Output, January – December 2018 and second quarters 2019 (2015=100)

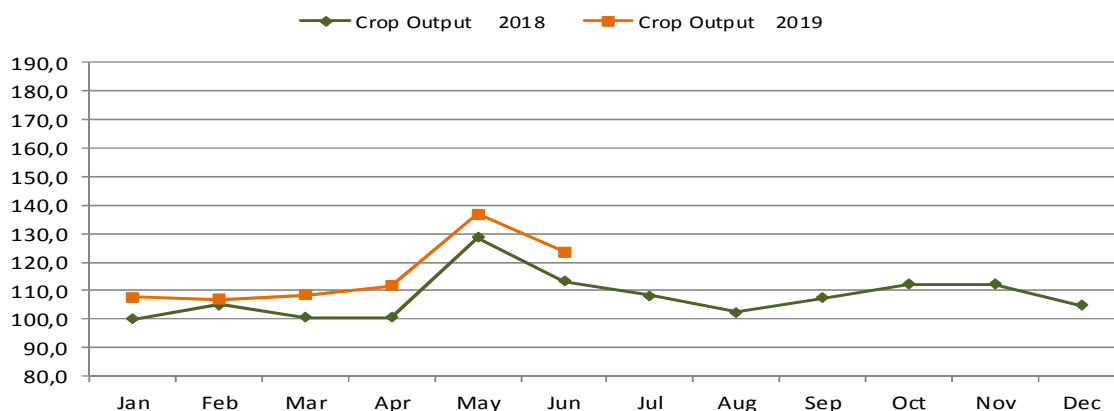


Figure 2: Monthly Output Price Index for Animal Output January – December 2018 and second quarters 2019 (2015=100)

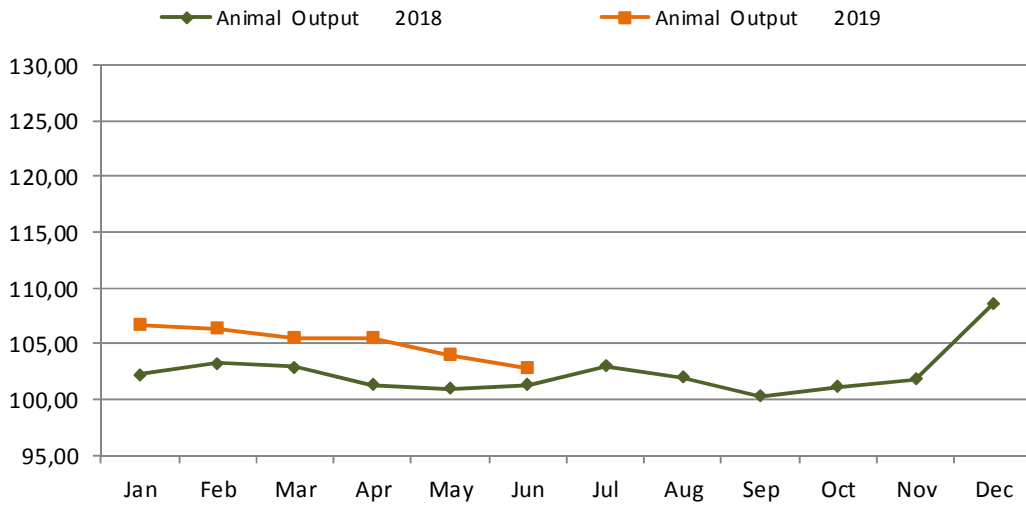
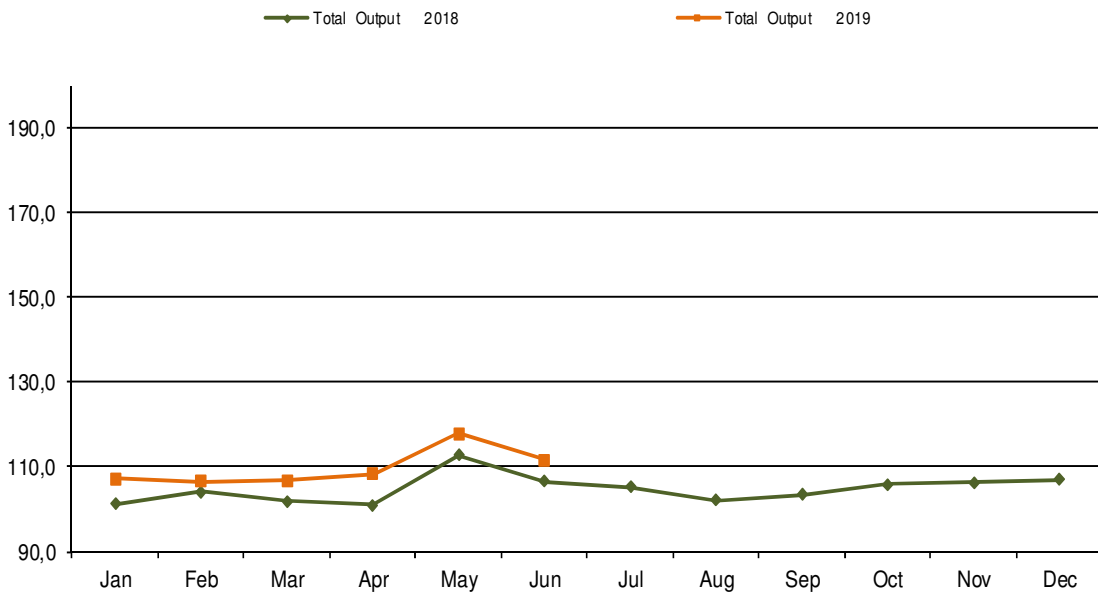


Figure 3: Monthly Output Price Index for Total Output, January – December 2018 and second quarters 2019 (2015=100)



Agricultural Output Price Index Q2**Table 1: Agricultural Output Price Index, Q2 2015 - 2019 (2015=100)**

API code	Description	Q2-2015	Q2-2016	Q2-2017	Q2-2018	Q2-2019
010000	CEREALS (including seeds)	105,2	98,0	95,0	87,0	113,4
011000	Wheat and spelt	105,7	97,7	94,7	85,9	114,0
011100	Soft wheat and spelt	105,7	97,7	94,7	85,9	114,0
012000	Rye and meslin	104,4	104,1	102,0	91,8	85,7
013000	Barley	95,3	103,5	100,5	95,3	87,9
013200	Malting barley	95,3	103,5	100,5	95,3	87,9
014000	Oats and summer cereal mixtures	98,1	102,6	104,8	83,9	91,3
015000	Grain maize	95,4	102,3	98,9	110,7	108,0
030000	FORAGE PLANTS	94,9	130,1	103,2	115,9	115,7
031000	Fodder maize	98,1	103,5	98,1	91,7	92,0
032000	Fodder root crops (including forage beet)
039000	Other forage plants	94,6	132,1	103,5	117,7	117,5
040000	VEGETABLES AND HORTICULTURAL PRODUCTS	131,9	130,8	128,8	118,0	122,1
041000	Fresh vegetables	131,9	130,8	128,8	118,0	122,1
041100	Cauliflower
041200	Tomatoes	139,1	138,0	144,8	127,8	117,6
041900	Other fresh vegetables	130,0	128,9	124,6	115,4	123,2
042000	Plants and flowers
050000	POTATOES (including seeds)	118,2	113,1	120,9	129,8	149,8
051000	Potatoes for consumption	118,2	113,1	120,9	129,8	149,8
060000	FRUITS	101,3	111,5	120,7	113,6	116,3
061000	Fresh fruit (excluding citrus fruit and grapes)	101,3	111,5	120,7	113,6	116,3
061100	Dessert apples	102,4	92,8	100,8	121,6	121,6
061200	Dessert pears	108,8	105,0	133,8	67,5	109,7
061300	Peaches	129,3	122,9	101,8	113,2	102,1
061900	Other fresh fruit, nuts and dried fruit	100,6	113,3	121,5	116,1	116,5
062000	Citrus fruit
063000	Tropical fruit
064000	Grapes
100000	CROP OUTPUT (010000 TO 090000), including fruits (060000) and vegetables (040000)	122,5	124,1	122,2	117,3	125,3
101000	CROP OUTPUT (010000 TO 090000), excluding fruits (060000) and vegetables (040000)	109,1	114,4	110,5	116,8	132,8
110000	ANIMALS	100,5	96,9	99,5	96,1	105,9
111000	Cattle	99,8	96,5	98,6	97,0	112,0
111100	Cattle excluding calves	99,4	96,0	98,7	98,7	111,5
111200	Calves	100,7	97,5	98,3	93,4	113,1
112000	Pigs	101,4	96,9	101,6	92,0	103,6
113000	Equines
114000	Sheep and goats	100,8	97,9	99,8	96,1	98,8
115000	Poultry	101,8	96,1	98,6	98,9	101,4
115100	Chickens	101,8	96,1	98,6	98,9	101,4
115900	Other poultry	101,8	96,1	98,6	98,9	101,4
119000	Other animals
120000	ANIMAL PRODUCTS	97,9	96,7	101,3	103,2	103,5
121000	Milk	99,8	97,1	101,2	102,8	103,7
121100	Cows' milk	99,8	97,1	101,2	102,8	103,7
121900	Other milk types
122000	Eggs	86,9	93,8	101,3	104,4	98,5
129000	Other animal products	99,9	99,4	103,3	107,2	114,5
130000	ANIMAL OUTPUT (110000+120000)	98,6	96,8	100,8	101,2	104,1
140000	AGRICULTURAL GOODS OUTPUT (100000+130000), including fruits (060000) and vegetables (040000)	105,0	104,1	106,5	105,5	109,8
141000	AGRICULTURAL GOODS OUTPUT (101000+130000), excluding fruits (060000) and vegetables (040000)	99,7	98,7	101,9	102,9	107,3

Monthly Agricultural Output Price Index**Table 2: Monthly Agricultural Output Price Index April – Jun 2019 (2015 = 100)**

Item Code	Groups	Weight		2019		
		%	1000 euro	Apr	May	Jun
0 1	Cereals	27	8 940	112,6	113,2	113,9
0 1.1	Wheat	26	8 455	113,1	113,8	114,6
0 1.3	Barley	0	48	88,9	91,1	83,7
0 1.5	Maize	1	364	108,6	107,4	108,0
0 1.9	Other cereals	0	73	91,7	88,9	84,3
0 3	Forage plants	36	11 643	111,5	113,4	113,0
0 3.1	Fodder maize	1	425	91,3	91,3	92,5
0 3.9	Other forage plants	34	11 218	112,3	114,3	113,8
0 3.9.1	Hay	26	8 493	108,7	110,6	109,6
0 3.9.2	Straw	4	1 234	130,4	132,3	134,2
0 3.9.9	Other forage plants ;others	5	1 491	118,1	120,2	120,2
0 4	Vegetables	210	68 778	110,1	114,8	128,0
0 4.1	Fresh vegetables	210	68 778	110,1	114,8	128,0
0 4.1.2	Tomatoes	31	10 107	.	120,6	116,5
0 4.1.9	Other fresh vegetables	179	58 671	110,1	113,4	132,0
0 4.1.9	Pepper	105	34 293	.	110,2	141,1
0 4.1.9.1	Cabbage	1	388	.	.	95,9
0 4.1.9.4	Cucumbers	1	429	271,4	179,3	108,0
0 4.1.9.6	Onions	8	2 569	197,4	175,8	153,7
0 4.1.9.7	Beans	49	16 071	93,1	93,1	95,8
0 4.1.9	Water melon	2	550	.	.	.
0 4.1.9.9.9	Other fresh vegetable;other	13	4 371	129,2	116,1	110,7
0 5	Potatoes	62	20 348	143,8	219,9	133,2
0 6	Fruits	87	28 598	92,8	147,4	113,3
0 6.1	Fresh fruits	52	16 970	92,8	147,4	113,3
0 6.1.1	Apple	7	2 360	.	.	121,6
0 6.1.2	Pears	6	1 963	.	.	109,7
0 6.1.9	Other fresh fruit	39	12 646	92,8	147,4	112,8
0 6.1.9.2	Plums	22	7 221	.	.	.
0 6.1.9.4	Nuts and dried fruit	3	846	92,8	92,8	97,8
0 6.1.9.9	Other fresh fruits; other	14	4 579	.	175,5	113,5
0 6.4.1	Desert grapes	12	3 899	.	.	.
0 6.4.9	Wine grapes	24	7 729	.	.	.
10	Crop Output	423	138 307	111,8	136,8	123,6
11	Animals	162	52 824	108,1	106,3	103,3
11.1	Cattle	74	24 125	113,0	111,0	111,9
11.2	Pigs	28	9 199	106,3	102,5	101,9
11.4	Sheep	46	14 944	102,5	101,9	92,1
11.5	Poultry	14	4 556	103,6	103,5	97,0
11,9	Other animals (horses)	0	-	-	-	-
12	Animal Products	415	135 853	104,6	103,1	102,6
12.1	Milk	334	109 198	103,5	103,1	104,5
12.2	Eggs	62	20 112	107,7	99,6	88,2
12.9	Other animal products	20	6 543	112,5	115,5	115,5
13	Animal Output	577	188 677	105,6	104,0	102,8
14	Total Output	1000	326 984	108,2	117,9	111,6

Changes in Output Price Index

Table 3: Changes in Output Price Index for same month April – Jun 2019 / 2018(2015 =100), percent

Item Code	Groups	Weight		Apr - 18/ Apr - 19 %	May - 18 / May - 19 %	Jun -18 / Jun -19 %
		%	1000 Euro	change	change	change
0 1	Cereals	27	8 940	29,4	30,1	31,0
0 1.1	Wheat	26	8 455	31,6	32,5	33,3
0 1.3	Barley	0	48	-6,7	-4,4	-12,2
0 1.5	Maize	1	364	-2,7	-3,8	-0,6
0 1.9	Other cereals	0	73	7,1	3,6	-8,4
0 3	Forage plants	36	11 643	-2,2	-2,1	-2,3
0 3.1	Fodder maize	1	425	0,7	0,7	0,0
0 3.9	Other forage plants	34	11 218	-2,3	-2,2	-2,4
0 3.9.1	Hay	26	8 493	-5,2	-5,1	-5,1
0 3.9.2	Straw	4	1 234	9,7	7,8	5,5
0 3.9.9	Other forage plants;others	5	1 491	3,6	5,5	6,4
0 4	Vegetables	210	68 778	9,6	-25,1	23,2
0 4.1	Fresh vegetables	210	68 778	9,6	-25,1	23,2
0 4.1.2	Tomatoes	31	10 107	.	.	.
0 4.1.9	Other fresh vegetables	179	58 671	9,6	-22,0	28,0
0 4.1.9	Pepper	105	34 293	.	.	.
0 4.1.9.1	Cabbage	1	388	.	.	.
0 4.1.9.4	Cucumbers	1	429	.	.	.
0 4.1.9.6	Onions	8	2 569	64,4	42,4	22,1
0 4.1.9.7	Beans	49	16 071	-2,8	-3,3	-0,6
0 4.1.9	Water melon	2	550	.	.	.
0 4.1.9.9.9	Other fresh vegetable;other	13	4 371	37,2	10,9	7,3
0 5	Potatoes	62	20 348	61,9	160,0	-14,9
0 6	Fruits	87	28 598	-14,0	23,3	0,1
0 6.1	Fresh fruits	52	16 970	-14,0	23,3	0,1
0 6.1.1	Apple	7	2 360	.	.	0,0
0 6.1.2	Pears	6	1 963	.	.	62,5
0 6.1.9	Other fresh fruit	39	12 646	-14,0	23,3	-2,8
0 6.1.9.2	Plums	22	7 221	.	.	.
0 6.1.9.4	Nuts and dried fruit	3	846	-14,0	-15,9	-10,6
0 6.1.9.9	Other fresh fruits; other	14	4 579	.	41,3	-2,5
0 6.4.1	Desert grapes	12	3 899	.	.	.
0 6.4.9	Wine grapes	24	7 729	.	.	.
10	Crop Output	423	138 307	11,1	6,2	8,9
11	Animals	162	52 824	12,5	10,3	7,9
11.1	Cattle	74	24 125	18,7	14,1	13,6
11.2	Pigs	28	9 199	11,2	11,2	15,8
11.4	Sheep	46	14 944	6,0	5,4	-3,0
11.5	Poultry	14	4 556	4,6	4,7	-1,9
11,9	Other animals (horses)	0	-	.	.	.
12	Animal Products	415	135 853	1,2	0,4	-0,9
12.1	Milk	334	109 198	0,5	0,5	1,8
12.2	Eggs	62	20 112	4,4	-3,2	-17,6
12.9	Other animal products	20	6 543	4,1	9,7	6,8
13	Animal Output	577	188 677	4,2	3,0	1,4
14	Total Output	1000	326 984	7,1	4,6	4,8

Monthly Absolute Average Price for some agriculture products

Table 4: Monthly Absolute Average Prices in euro for some major agriculture products, April – Jun 2019 (2016 = 100)

Item Code	Description	Unit	2019		
			Apr	May	Jun
01.1.	Wheat ¹	kg	0,22	0,22	0,22
01.3.	Barley ²	kg	0,29	0,30	0,28
01.5.	Maize ³	kg	0,25	0,25	0,25
01.2.	Rye ⁴	kg	0,30	0,31	0,29
01.4.	Oats ⁵	kg	0,31	0,28	0,27
03.9.1	Hay ⁶	kg	0,16	0,16	0,16
03.9.2	Straw ⁷	kg	0,10	0,10	0,10
03.9.9.	Lucern ⁸	kg	0,19	0,19	0,19
05.1.	Potatoes ⁹	kg	0,49	0,74	0,45
04.1.9.1	Cabbage ¹⁰	kg	.	.	0,22
04.1.9.6	Onion ¹¹	kg	1,00	0,96	0,73
04.1.9.9.9	Pepper ¹²	kg	.	.	1,36
04.1.9.3	Spinach ¹³	kg	0,70	0,71	1,00
04.1.9.7	Beans ¹⁴	kg	2,50	2,50	2,57
04.1.2	Tomatoe ¹⁵	kg	.	.	0,66
04.1.9.4	Cucumber ¹⁶	kg	.	.	.
04.1.9.9.9.1	Watermelon ¹⁷	kg	.	.	.
04.1.9.9.9.2	Leek ¹⁸	kg	1,33	1,23	1,29
04.1.9.9.9.3	Garlic ¹⁹	kg	4,07	3,57	3,93
06.1.1	Apple ²⁰	kg	:	:	:
06.1.2	Pear ²¹	kg	:	:	:
06.1.3	Chestnuts ²²	kg	:	:	:
06.1.9	Walnuts ²³	kg	2,64	2,64	2,79
06.1.4.1	Grape ²⁴	kg	.	.	.
11.1	Cattle ²⁵	kg	2,54	2,47	2,49
11.2	Pigs ²⁶	kg	2,39	2,30	2,29
11.4	Sheep ²⁷	kg	2,53	2,51	2,27
11.5	Chickens (wilages) ²⁸	1 pieces	11,00	11,00	10,14
11.5.1	Chickens (farms) ²⁹	1 pieces	1,80	1,79	1,84
12.1	Milk ³⁰	1 lit	0,31	0,31	0,32
12.9	Honey ³¹	kg	11,00	11,29	11,29
12.2	Eggs ³²	30 pieces	2,40	2,22	1,97

1 (.) Shows that in these months we do not collect prices for these agriculture products (Cabbage, Pepper, Spinach, Tomatoes, Cucumber, Watermelon, Apple, Pear, Chestnuts, Grape)

1 - 1 Wheat – is domestic, 2 Barley – Hybrid 448, 3 Maize – Hybrid 448, 4 Rye, 5 Oats, 6 Hay produced in meadow, 7 Wheat straw (Stubble wheat), 8 Lucerne, 9 potatoes, 10 Cabbage (Hybrid 4 11 Onions- second quality, 12 Pepper- variety Sombork, 13 Spinach- variety Matador, 14 Beans- second quality, 15 Tomatoes- variety Arleta, 16 Cucumber- variety Cornishon, 17 Watermelon– is domestic product, 18 Leek, 19 Garlic, 20 Apple, 21 Pear, 22 Chesnuts, 23 Walnuts, 24Grape, 25 Live weight per 1kg for bulls and heifers aged 18-22 months domestic pedigree, 26 Live weight per 1kg for pigs aged 10-12 months domestic pedigree, 27 Live weight per 1kg for sheep domestic pedigree (white, mug) aged older than 12 months, 28 Chicken (Willage)– domestic (18 weeks old), 29 Chicken (farms)– domestic (18 weeks old) , 30 Milk –price for 1litre cow milk with 3.2% fat, 31 Honey domestic product, 32 Price for 30 pieces of eggs, first class of quality,

Figure 4: Absolute average prices for wheat and maize, January – December 2018 and second quarters 2019 (2015=100)

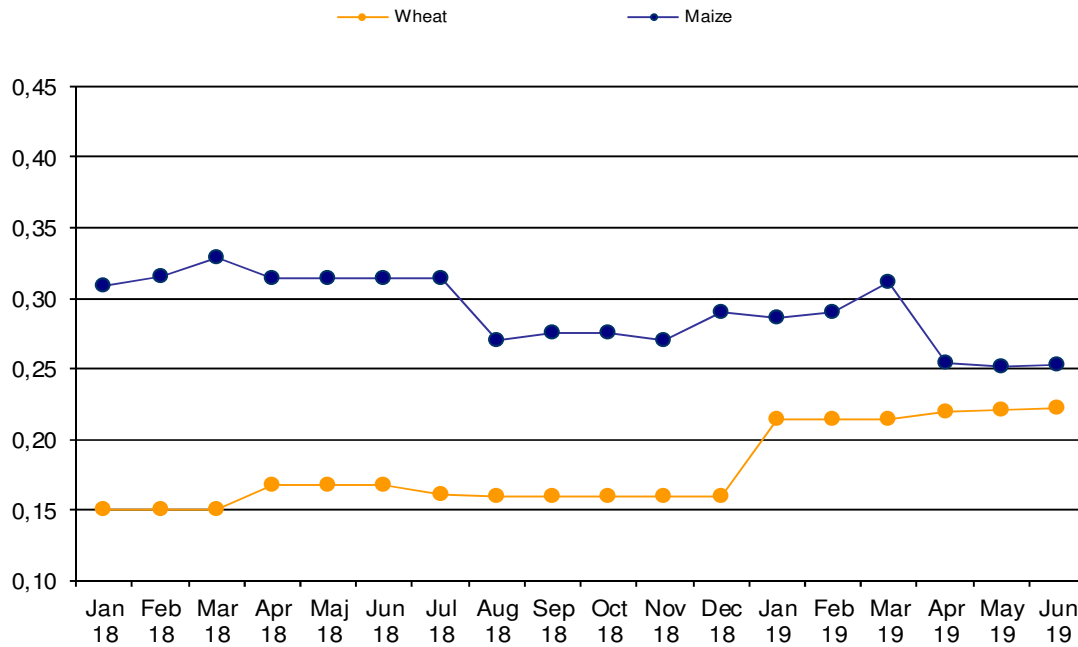


Figure 5: Absolute average prices for hay, straw and lucerne, January – December 2018 and second quarters 2019 (2015=100)

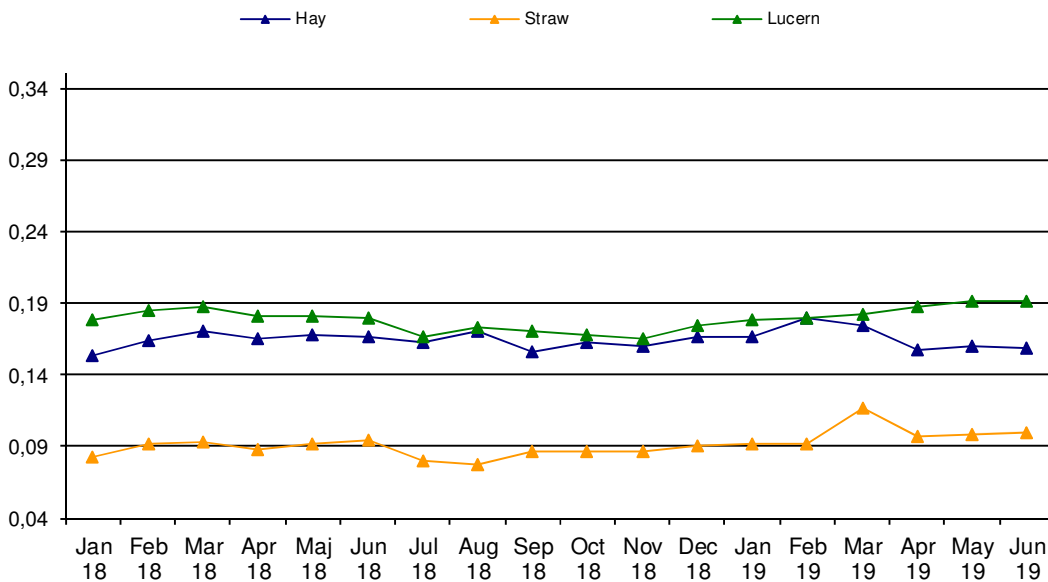


Figure 6: Absolute average prices for potatoes, tomatoes, pepper and cabbage, January – December 2018 and second quarters 2019 (2015=100)

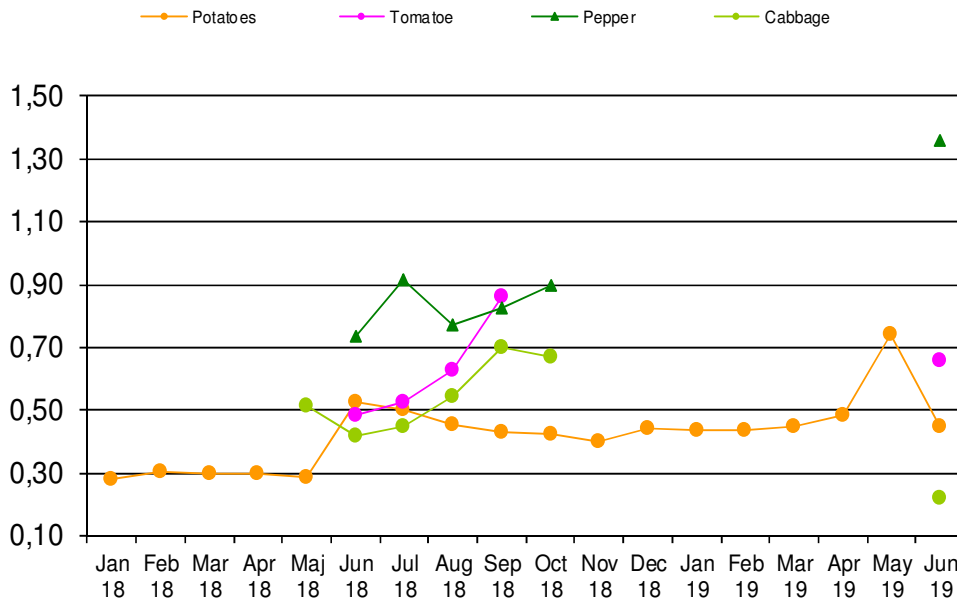
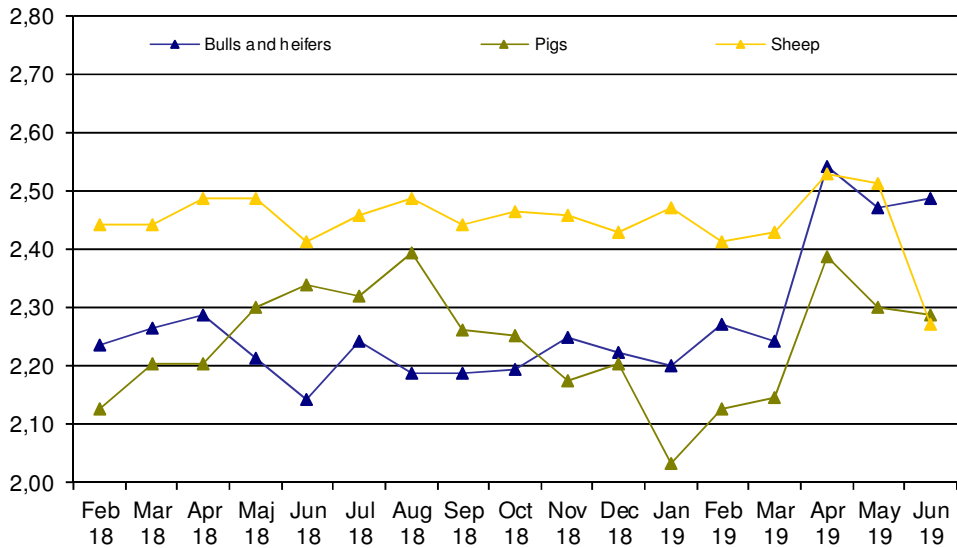


Figure 7: Absolute average prices for heifers and bulls, pigs and sheep calculated as live weight January – December 2018 and secondquarters 2019 (2015=100)



Methodology

Prices and Price indices in this publication have been calculated according standards for price statistics in European Union. The project for calculating these Prices and Price Indices was conducted in the frame of the project of “Improving agro monetary statistics” in cooperation with Statistic Sweden and with financial support by Sida (Swedish International Development Cooperation Agency).

Prices have been collected since November 2003 and are collected in seven regions: Pristina, Mitrovica , Peja, Gjakova ,Prizren, Ferizaj and Gjilan,. Prices are collected around the 15th in every month. Since the start the number of different prices that are collected have increased step by step. Therefore some prices are not available for the whole period. Prices are now collected for 71 products and measures prices that farmers receive for the part of their production that are sold. Weights to calculate aggregated indices are mainly based on Economic Accounts of Agriculture (EAA) from 2015, which is the base year in the indices (2015=100). It should be pointed out that the weights, in value or promille, only reflect the part of the agricultural production in Kosovo that are sold outside the agricultural household. For some products the value of the total production can be considerably higher than what is reflected in the weights.

According to EU standards, quarterly and annual indices are supposed to be calculated by each member state. The EU indices in this publication follow the methodology developed in EU. For national needs, also a monthly index is calculated. This index is calculated slightly different from the quarterly index. In short, the monthly index does not use monthly weights on aggregated level (when calculating code 10, 13 and 14). However for most crop groups (code 01, 03, 04 and 06) monthly weights are used within the group to calculate the group aggregates. On the other hand the quarterly index have variable quarterly weights everywhere. For this reason, the monthly and the quarterly indices might have slightly different developments if they are compared. However, the EU annual index and the Kosovo annual index are exactly the same. In both cases, the index is calculated as weighted annual index with monthly respectively quarterly weights.

The total weights, quarterly weights and monthly weights are fix during the base period. They all reflect the situation that was present in 2015. By having fix weights, the index is guaranteed only to measure price movements, which is the purpose of the index.

To compare the EU index presented in this publication with other countries, the Eurostat website is recommended (<http://epp.eurostat.ec.europa.eu/portal/page/portal/eurostat/home>).

Calculation of elementary Price Index

Calculations of elementary indices are in general done by using following formula, with un-weighted arithmetic mean price.

$$R_i^t = \frac{\frac{1}{n} \sum P_{ij}^t}{\frac{1}{n} \sum P_{ij}^o} \cdot 100$$

- R_i^t – Elementary index for month t and product i
- P – Collected price
- i – Product i
- j – Price j recorded for product (in general price for region 1,2,...,n)
- t – Observed month
- 0 – Base month

Calculation of aggregated Price Index

Calculating aggregated index for total Output or subgroups of Output Index is done using following formula.

$$I^t = \sum \left(R_i^t \cdot \frac{w_i^0}{\sum w_i^0} \right)$$

- I^t – Aggregated index for period t
- w_i⁰ – Weighting factor in base period for product i
- i – Product i
- t – Observed month
- 0 – Base month

Questionnaire

Target definition

Item number	Item name			Quantity	Unit
Price Collector				Collection place/ Company	
Date					
Price					

<p>Enumerators notes</p> <ul style="list-style-type: none"> - Detailed description of specific variety selected for re-pricing - Changes in the detailed description, date for changes - Treatment of quality change when description changed (information of over-lap Price observation, alt. valuation of quality change)
--

Kosovo Agency of Statistics

short description

Kosovo Agency of Statistics is a professional institution which deals with collection, processing and publication of official statistical data. As such acts since 1948 and has passed through several historical stages, structured according to state regulation of those times.

On 2 August 1999, the Agency has resumed his professional work (after nine years of interruption of all statistical series detrimental to the interest of Kosovo), as an independent institution under the Ministry of Public Administration. Since 12.12.2011 the Agency operates in the frames of the Prime Minister's Office. Office is funded by the Kosovo Consolidated Budget, but also by donors for specific projects and for technical professional support.

Kosovo Agency of Statistics acts according to the Law No. 04/L-036 which entered into force on 12.12.2011. Programme of Official Statistics 2013/2017 is in implementation for the development of statistical system in correlation with the European Union statistics (EUROSTAT).

Kosovo Agency of Statistics has this organizational structure: production departments; Department of Economic statistics, Department of National Accounts, Department of Agriculture and Environment statistics and Department of Social statistics. **Support Departments**; Department of Methodology and Information Technology, Department of Policy Planning, Coordination and Communication, Department of Census and survey and Department of Administration. **Within the Agency are also established Regional Offices**; Gjakove, Gjilan, Mitrovica, Peja, Prizren, Pristina and Ferizaj

In KAS are employed in total 155 workers, of whom 100 (68,0 %) at the headquarters of the Agency, while in the Regional Offices, 47 (32,0%). Agency's educational qualifying structure is as follows: 75,5% with university education, 12,3% with with non-tertiary education, and 12.3% with secondary education.

We have professional and technical cooperation with all Ministries of the Government of Kosovo, especially with the Ministry of Economy and Finance, Central Bank of Kosovo, with international institutions, EUROSTAT, International Monetary Fund, World Bank, Sweden's SIDA, DFID, UNFPA, UNDP, UNVEF, and with the statistical institutions of the countries in the region.

Kosovo Agency of Statistics almost completely covers the territory of Kosovo, based on the statistical structure of the enumeration areas as the basic unit and sole in the country from which it gets first hand information. All surveys conducted in the field use the extension of the samples in these enumeration areas but also a statistical methodology according to international recommendations. During the collection of statistical data and reports from reporting entities are involved professionals, technicians, administrators, servants of the country offices, field enumerators from regional offices, etc.

In 2011, the project of Population Census , Households and Dwellings was successfully implemented, and in 2014 was successfully carried out the Agriculture Census. The result obtained from these censuses will have an important role in the development policies.

The mission of the Agency; to meet the needs of users with qualitative statistical data, objective, in time and space so that users have reliable base to conduct regular analysis in the interest of planning and project development at the municipal and country level. To support government institutions, scientific institutes, research academies, businesses in order to provide proper information for decision-makers and other users in Kosovo.

- **Address:** KOSOVO AGENCY OF STATISTICS
Street. "Zenel Salihu", No. 4, 10000 Pristina
- **Telephone:** +383 (0) 38 200 31 129
CEO: +383 (0) 38 200 31 112
- **Fax::** +383 (0) 38 235 033
- **E-mail:** infoask@rks-gov.net
- **Web:** <http://ask.rks-gov.net>