



Republika e Kosovës  
Republika Kosova-Republic of Kosovo  
*Qeveria - Vlada - Government*  
Zyra e Kryeministrit -Ured Premijera -Office of the Prime Minister  
*Agjencia e Statistikave të Kosovës - Agencija za Statistike Kosova - Kosovo Agency of Statistics*

## Series 3: Economic Statistics

### Statistical Repertoire of Economic Enterprises in Kosovo Q1 2019



## Foreword

Kosovo Agency of Statistics (KAS) has compiled the publication of "**Statistical Repertoire of Enterprises in Kosovo in Q1 2019**", which contains statistical data on new registered businesses at the Kosovo Business Registration Agency (KBRA) from 01.01.2019 until 31.03.2019 (first quarter of 2019).

Statistical Business Register (SBR) is part of KAS which contains basic information for all businesses that exercise economic activity in the territory of the Republic of Kosovo and as such serves for statistics and analysis of demographics of the business, sampling design and for raising the country-level results for all surveys conducted with businesses. SBR also serves as an important source of information for calculating Gross Domestic Product.

SBR is constructed and is continuously updated based on two administrative data sources (KBRA and Tax Administration of Kosovo), as well as from regular statistical surveys conducted by KAS.

Continuous demand for statistical data on enterprises are daily requirements from different users whether they are internal or external users of data from KAS, therefore based on these requirements we have compiled various tabular and graphical data.

We believe that this publication will serve as a useful reference base for all users of KAS statistical data and will serve as useful and relevant economic information for Kosovo.

Comments, remarks, suggestions and proposals regarding this publication are welcome and they can be sent to: [muhamet.kastrati@rks-gov.net](mailto:muhamet.kastrati@rks-gov.net)

Statistical Repertoire of Enterprises in Kosovo is a regular quarterly publication.

*NOTE: From 1 September, 2014, the nomenclature of economic activities is in the new version of NACE Rev. 2, and some of the previously published data have been converted into this version.*

Publication was prepared by:

Ilir T. Berisha - Director of Department,  
Ismajl Sahiti - Head of Division,  
Hysni Elshani - Senior Officer,  
Muhamet Kastrati - IT specialist for SBR,  
Bekim Bojku – Senior Officer,  
Ahmet Cakolli - Design Officer.

June, 2019

Chief Executive Officer, KAS  
Isa Krasniqi

## List of Abbreviations

**KAS** Kosovo Agency of Statistics

**SBR** Statistical Business Register

**KBRA** Kosovo Business Registration Agency

**TAK** Tax Administration of Kosovo

**MTI** Ministry of Trade and Industry

**GDP** Gross Domestic Product

**KPA** Kosovo Privatization Agency

**EC** European Commission

**NEA** Nomenclature of Economic Activities

**NACE Rev. 1** (Nomenclature of Economic Activities EC - 1st version)

**NACE Rev.2** (Nomenclature of Economic Activities EC - 2nd Version)

**SMEs** Small and medium-sized enterprises

**Q1** First quarter

**Q2** Second quarter

**Q3** Third quarter

**Q4** Fourth quarter

## Symbols

- No occurrence

: Data not available

## List of Contents

	Page
1 Characteristics of enterprises registered in Q1 2019.....	5
2 Methodological explanations and definitions.....	6
2.1. Definitions           7	
2.2. Legal forms of organization of business.....	8
3 New and terminated enterprises by quarter.....	9
4 Enterprises by economic sector, legal form of organization and the category of number of employees .....	11
Categorization of enterprises by size and gender .....	12
5 Number of registered enterprises by municipality .....	13
6 Registered individual and non-individual enterprises.....	15
7 Registered enterprises by sector of economic activity and number of employees..	17
8 Registered enterprises by legal form.....	18
9 Registered enterprises by origin of capital.....	19
10 Terminated enterprises .....	20



## **1 Characteristics of enterprises registered in Q1 2019**

In the first quarter of 2019 (Q1 2019) a total of 2404 enterprises were registered.

Increase by 0.1% of registered enterprises is observed compared with the previous quarter (Q4 2018). There is a decrease by 5.9% of registered enterprises compared to the same quarter last year (Q1 2018).

The most favored economic activities during this quarter were: Wholesale and retail trade, repair of motor vehicles, motorcycles with 596 (24.8%), manufacture with 277 (11.5%), professional, scientific and technical activities with 253 (10.5%), accommodation and food service activities by 240 (10.0%), Construction with 232 (9.7%), while other activities take part in smaller scale.

In the category of 1 to 4 employees there are 2314 enterprises registered in this quarter (96.3%), with 5 to 9 employees are 61 registered enterprises (2.5%), 10 to 19 employees are 20 registered enterprises (0.8%), 20 up to 249 employees with 8 registered enterprises (0.3%) and in the category of 250 or more employees there is an enterprise registered during this quarter.

Regarding the geographic extent of enterprises registered at municipal level, as in every quarter prevails the municipality of Prishtina with 759 registered enterprises (31.6%), Ferizaj with 183 registered enterprises (7.6%), Prizren with 175 registered enterprises (7.3%), Peja with 146 registered enterprises (6.1%), Gjilan with 134 registered enterprises (5.6%) and Fushe Kosova 100 registered enterprises (5.1%), while other municipalities have smaller number of enterprises registered in this quarter.

## 2 Methodological explanations and definitions

Statistical Business Register (SBR) serves for statistical purposes and should clearly identify the units in order to:

- Enable obtaining the information about them via administrative sources.
- Enable the preparation of samplings; coordination of surveys and raising their results at the country level;
- Enable demographic analysis of enterprises and related entities.
- Provide input data for calculating Gross Domestic Product (GDP).

Statistical Business Register (SBR) - **Includes** all legal entities (enterprises) that exercise economic activity within the territory of Kosovo.

**Does not include:** Public administration, Non-profit Organizations and International Organizations.

**Sources for updating the variables of SBR are:**

- Administrative
  - o Information from the Kosovo Business Registration Agency
  - o Information from the Tax Administration of Kosovo
- Statistical
  - o Structural Business Survey
  - o Short-term Statistical Surveys
  - o Survey about Hotel Services
  - o Collection of Producer Prices
  - o Collection of Import Prices

**Main variables in the SBR are grouped by:**

- **Identification variables**
  - o Number of business registration (NBR), name, legal form, ownership, address, communication (phone, fax, email, etc.)
- **Stratified variables**
  - o Main economic activity (NACE Rev.2), size by employees
- **Demographic variables**
  - o Date of registration, date of termination/closure
- **Updated variables are**
  - o Status of activity (active or inactive)
  - o Economic activity of the enterprise
  - o Size by employees
  - o Address, and communication variables (telephone, fax, mobile, e-mail)

## 2.1. Definitions

Nomenclature of Economic Activities (NACE) is a four-digit level classification of economic activity exercised in different subjects.

This nomenclature is translation and adaptation of the European Classification of Economic Activities (NACE Rev. 2. in English).

The use of this nomenclature is mandatory since 1 September, 2014 by the institutions of the Republic of Kosovo and based on the regulation No. 11/2013 adopted by the Government of the Republic of Kosovo.

The structure of economic activities NACE Rev. 2 consists of 21 sections presented below labelled with letters from A to U.

- A. Agriculture, forestry and fishing
- B. Mining and quarrying
- C. Manufacturing
- D. Electricity, gas, steam and air conditioning supply
- E. Water supply, sewerage, waste management and remediation activities
- F. Construction
- G. Wholesale and retail trade, repair of motor vehicles and motorcycles
- H. Transportation and storage
- I. Accommodation and food service activities
- J. Information and communication
- K. Financial and insurance activities
- L. Real estate activities
- M. Professional, scientific and technical activities
- N. Administrative and support service activities
- O. Public administration and defense
- P. Education
- Q. Human health and social work activities
- R. Arts, entertainment and recreation
- S. Other services activities
- T. Activities of households as employers
- U. Activities of extraterritorial organizations and bodies

Classes of economic activities according to the new nomenclature **NACE Rev. 2** are total of 615 of them, which are encoded by four digit code ranging from 0111 to 9900.



## 2.2. Legal forms of organization of business

Definitions applied to legal forms of enterprises under Regulation 2001/16 and Law No. 02/L123 on Business Organizations which are applied when registering in the KBRA, are as follows:

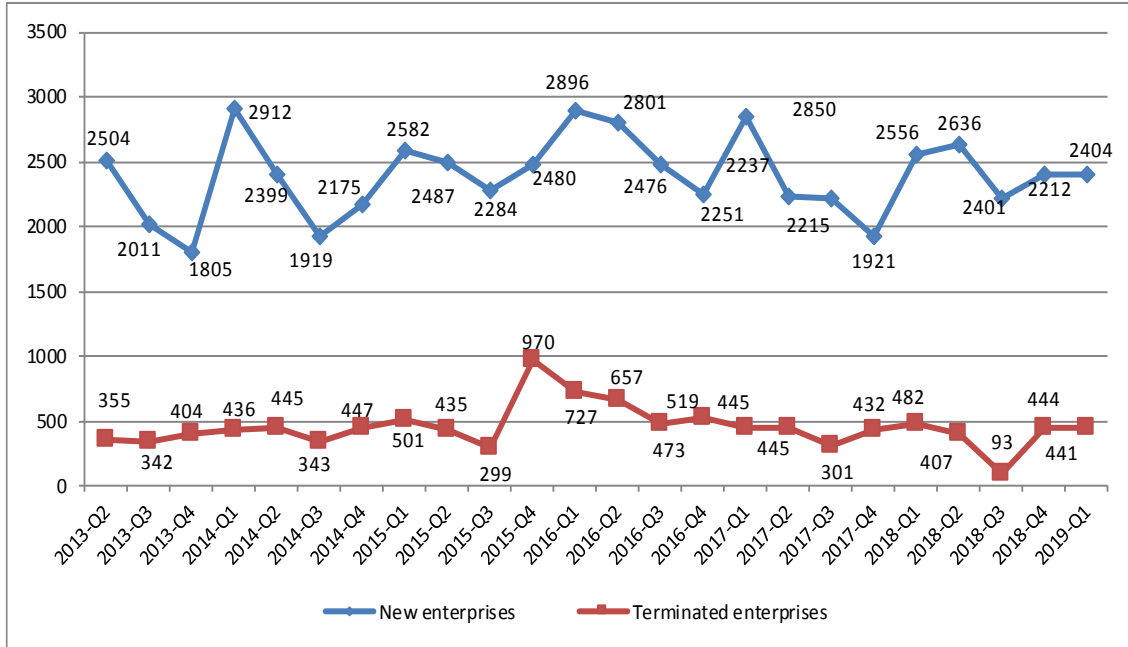
1. **Individual business** - is the **only natural person** who performs economic activities for the purpose of profit and who is registered in the KBRA. In the individual business the owner has unlimited liability for all debts of the company. The company has an official name or includes the surname of the lawful owner
2. **General partnership** - The general partnership, all partners jointly respond without restriction for partnership debts. A partnership has a label, which may include the name of one or more partners.
3. **Limited partnership** - In limited partnerships, except "unlimited" partners (partners responsible jointly without limitation for the debts of the company) also participate "limited" partners or those responsible for the company's obligations to the limit of the value of their founding contributions / capital.
4. **Limited liability enterprises** - Limited liability enterprises are those enterprises that are established by one or several founders, who answer only to the limit of the value of their contribution. Limited liability enterprise has a label, which may include the name of one or more partners.
5. **Shareholders** – Shareholders are those whose capital is divided into shares and shareholders respond only to the limit of the value of their contribution. Shareholder enterprise (a joint stock enterprises) can be established by having one or more shareholders.
6. **Foreign business organization** - A foreign company is a business and from the moment of registration is considered a branch in Kosovo that has no identity of legal person. After its registration it shall enjoy all the rights and obligations established under the applicable law.
7. **Social enterprise** - Social enterprise means a legal person that most assets and capital are socially owned. These enterprises until the privatization are monitored and registered by the Kosovo Privatization Agency under the Law on Commercial Companies No.02/L-123.
8. **Public enterprise** - Public enterprise is the enterprise which carries out activities of general interest which is established by the state. Public enterprise is monitored by the government and organized as a joint stock company in accordance with applicable law on Commercial Companies. All ownership interests in a public company will be represented by shares and these shares will be registered.
9. **Agricultural cooperative** - Agricultural cooperative is a business organization created by natural or legal persons who must be farmers who contribute with their private property to the share of capital.
10. **Enterprises under the jurisdiction of the KPA** - are ex-social owned enterprises which are now managed and supervised by the KPA (Kosovo Privatization Agency).

### 3 New and terminated enterprises by quarter

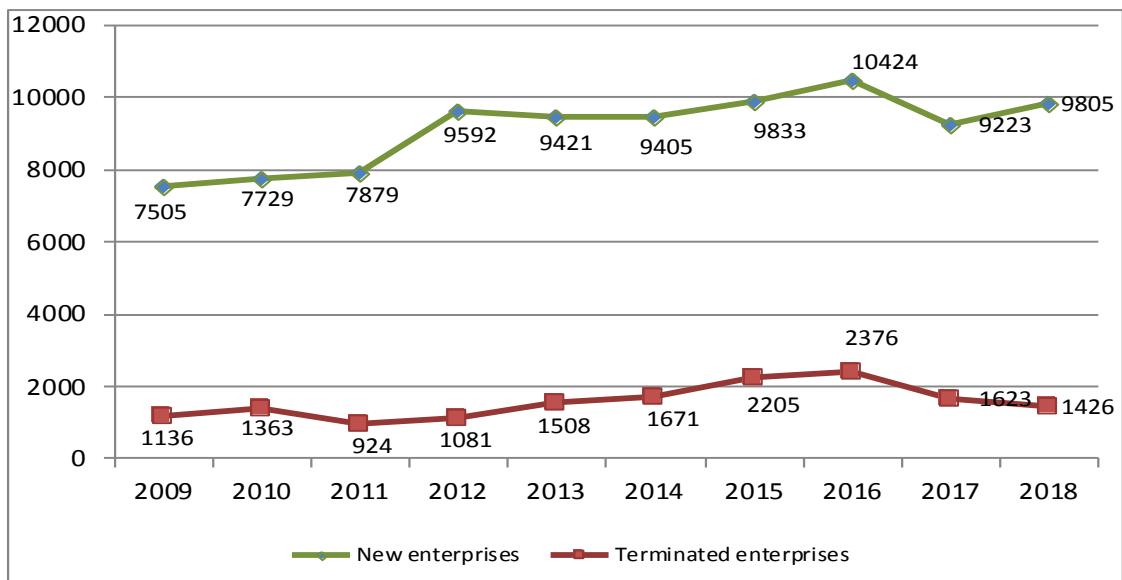
**Table 1. Number of registered enterprises by quarter and sector of economic activity**

Period		Sector of economic activity																		
		A	B	C	D	E	F	G	H	I	J	K	L	M	N	O	P	Q	R	S
Quarter	Total	Agriculture, forestry and fishing	Mining and quarrying	Manufacturing	Electricity, gas, steam and air conditioning supply	Water supply, sewage, waste management and remediation activities	Construction	Wholesale and retail trade, repair of motor vehicles and motorcycles	Transportation and storage	Accommodation and food service activities	Information and communication	Financial and insurance activities	Real estate activities	Professional, scientific and technical activities	Administrative and support service activities	Public administration and protection: compulsory social protection	Education	Human health and social work activities	Arts, entertainment and recreation	Other service activities
2013 - Q1	<b>3100</b>	301	10	299	9	19	337	867	201	264	104	6	135	169	60	9	32	48	54	176
2013 - Q2	<b>2504</b>	142	7	258	2	14	227	759	107	246	101	4	95	162	65	9	28	43	52	183
2013 - Q3	<b>2011</b>	122	7	163	6	11	201	565	108	240	82	8	15	119	53	6	20	48	63	174
2013 - Q4	<b>1805</b>	188	5	152	5	6	178	543	109	161	70	2	12	135	36	9	18	34	62	80
2013 Total	<b>9420</b>	<b>753</b>	<b>29</b>	<b>872</b>	<b>22</b>	<b>50</b>	<b>943</b>	<b>2734</b>	<b>525</b>	<b>911</b>	<b>357</b>	<b>20</b>	<b>257</b>	<b>585</b>	<b>214</b>	<b>33</b>	<b>98</b>	<b>173</b>	<b>231</b>	<b>613</b>
2014 - Q1	<b>2911</b>	205	10	283	4	13	284	887	181	293	121	12	21	180	77	12	33	50	88	157
2014 - Q2	<b>2399</b>	186	9	283	3	16	207	704	99	282	95	8	10	146	61	11	20	39	55	165
2014 - Q3	<b>1919</b>	115	7	196	3	13	146	574	111	237	61	11	7	97	49	2	18	33	60	179
2014 - Q4	<b>2175</b>	168	6	216	14	9	166	649	143	222	80	12	21	147	65	17	19	51	50	120
2014 Total	<b>9404</b>	<b>674</b>	<b>32</b>	<b>978</b>	<b>24</b>	<b>51</b>	<b>803</b>	<b>2814</b>	<b>534</b>	<b>1034</b>	<b>357</b>	<b>43</b>	<b>59</b>	<b>570</b>	<b>252</b>	<b>42</b>	<b>90</b>	<b>173</b>	<b>253</b>	<b>621</b>
2015 - Q1	<b>2582</b>	255	7	276	8	12	237	784	143	253	104	12	15	144	80	6	20	36	57	133
2015 - Q2	<b>2487</b>	212	12	261	5	13	193	751	142	263	98	15	15	139	76	10	29	67	60	126
2015 - Q3	<b>2284</b>	208	8	239	4	8	160	622	108	256	86	43	19	123	66	3	25	49	68	189
2015 - Q4	<b>2480</b>	270	5	271	13	15	163	746	131	246	80	25	25	175	74	6	35	35	58	107
2015 Total	<b>9833</b>	<b>945</b>	<b>32</b>	<b>1047</b>	<b>30</b>	<b>48</b>	<b>753</b>	<b>2903</b>	<b>524</b>	<b>1018</b>	<b>368</b>	<b>95</b>	<b>74</b>	<b>581</b>	<b>296</b>	<b>25</b>	<b>109</b>	<b>187</b>	<b>243</b>	<b>555</b>
2016 - Q1	<b>2896</b>	261	16	343	12	17	254	820	151	249	108	68	14	183	82	8	40	63	73	134
2016 - Q2	<b>2801</b>	223	6	334	11	13	202	779	150	326	114	34	17	170	101	6	42	60	51	162
2016 - Q3	<b>2476</b>	372	6	258	9	26	194	552	125	232	105	28	15	122	81	8	31	46	77	189
2016 - Q4	<b>2251</b>	234	6	246	10	9	177	587	102	210	96	48	12	179	89	2	28	35	70	111
2016 Total	<b>10424</b>	<b>1090</b>	<b>34</b>	<b>1181</b>	<b>42</b>	<b>65</b>	<b>827</b>	<b>2738</b>	<b>528</b>	<b>1017</b>	<b>423</b>	<b>178</b>	<b>58</b>	<b>654</b>	<b>353</b>	<b>24</b>	<b>141</b>	<b>204</b>	<b>271</b>	<b>596</b>
2017 - Q1	<b>2850</b>	350	12	265	10	11	269	799	115	261	118	23	23	188	110	6	39	50	76	125
2017 - Q2	<b>2237</b>	96	11	234	6	8	202	623	84	278	100	30	16	189	110	1	15	50	52	132
2017 - Q3	<b>2215</b>	245	6	225	5	9	188	529	78	208	116	20	17	186	91	6	30	45	51	160
2017 - Q4	<b>1921</b>	131	6	166	17	10	180	511	70	183	107	37	9	171	90	5	26	46	52	104
2017 Total	<b>9223</b>	<b>822</b>	<b>35</b>	<b>890</b>	<b>38</b>	<b>38</b>	<b>839</b>	<b>2462</b>	<b>347</b>	<b>930</b>	<b>441</b>	<b>110</b>	<b>65</b>	<b>734</b>	<b>401</b>	<b>18</b>	<b>110</b>	<b>191</b>	<b>231</b>	<b>521</b>
2018 - Q1	<b>2556</b>	127	7	316	7	13	266	722	94	247	114	23	14	204	111	3	29	59	69	131
2018 - Q2	<b>2636</b>	198	10	299	6	9	260	723	93	277	114	24	15	170	125	9	20	62	86	136
2018 - Q3	<b>2212</b>	145	8	214	6	9	189	519	65	212	149	15	19	182	78	4	33	54	72	239
2018 - Q4	<b>2401</b>	156	7	280	15	10	244	561	57	252	154	22	14	212	125	2	49	45	45	151
2018 Total	<b>9805</b>	<b>626</b>	<b>32</b>	<b>1109</b>	<b>34</b>	<b>41</b>	<b>959</b>	<b>2525</b>	<b>309</b>	<b>988</b>	<b>531</b>	<b>84</b>	<b>62</b>	<b>768</b>	<b>439</b>	<b>18</b>	<b>131</b>	<b>220</b>	<b>272</b>	<b>657</b>
2019 - TM1	<b>2404</b>	121	15	277	7	9	232	596	80	240	152	19	22	253	130	5	38	52	55	101

**Graph 1. Number of registered and terminated enterprises by quarter**



**Graph 2: Number of registered and terminated enterprises by year**

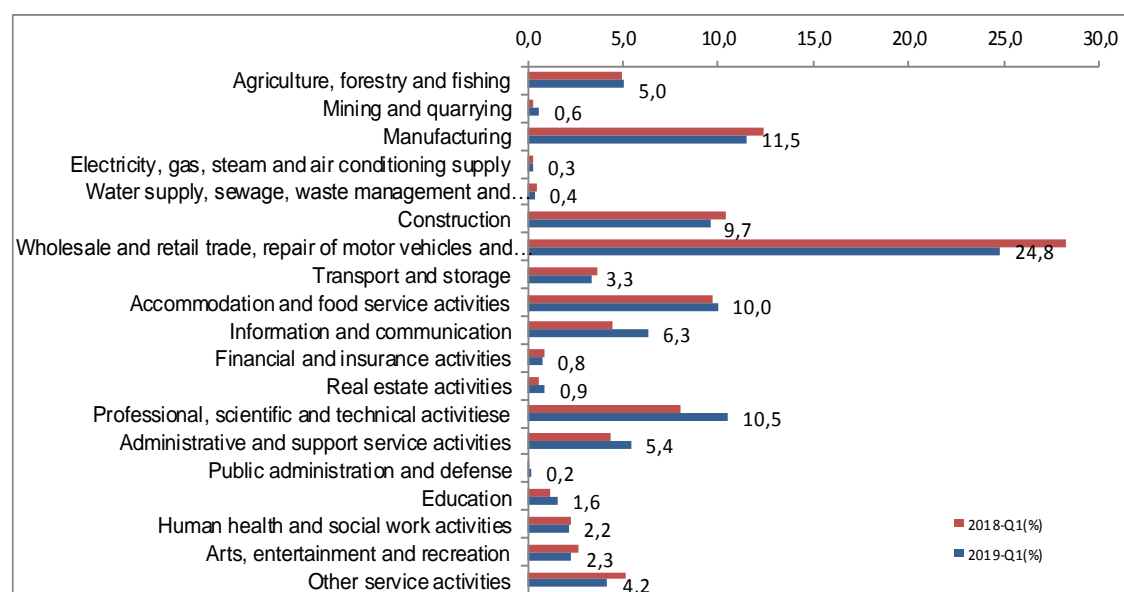


## 4 Enterprises by economic sector, legal form of organization and the category of number of employees

**Table 2. Number of registered enterprises by sector of economic activity, type and number of employees in Q1 2019**

Sector of economic activity	Total	Category of number of employees					
		individual businesses			non-individual businesses		
		Total	1-4	5 +	Total	1-4	5 +
<b>Total</b>	<b>2404</b>	<b>929</b>	<b>924</b>	<b>5</b>	<b>1475</b>	<b>1390</b>	<b>85</b>
A Agriculture, forestry and fishing	121	80	80	-	41	40	1
B Mining and quarrying	15	-	-	-	15	14	1
C Manufacturing	277	108	107	1	169	152	17
D Electricity, gas, steam and air conditioning supply	7	-	-	-	7	7	-
E Water supply, sewage, waste management and remediation activities	9	1	1	-	8	8	-
F Construction	232	62	61	1	170	159	11
G Wholesale and retail trade, repair of motor vehicles and motorcycles	596	215	214	1	381	366	15
H Transport and storage	80	44	44	-	36	35	1
I Accommodation and food service activities	240	106	105	1	134	120	14
J Information and communication	152	50	50	-	102	95	7
K Financial and insurance activities	19	5	5	-	14	14	-
L Real estate activities	22	7	7	-	15	15	-
M Professional, scientific and technical activities	253	67	66	1	186	182	4
N Administrative and support service activities	130	48	48	-	82	74	8
O Public administration and defense	5	2	2	-	3	2	1
P Education	38	15	15	-	23	19	4
Q Human health and social work activities	52	25	25	-	27	26	1
R Arts, entertainment and recreation	55	28	28	-	27	27	-
S Other service activities	101	66	66	-	35	35	-

**Graph 3. Enterprises registered by economic sector in Q1 2019**



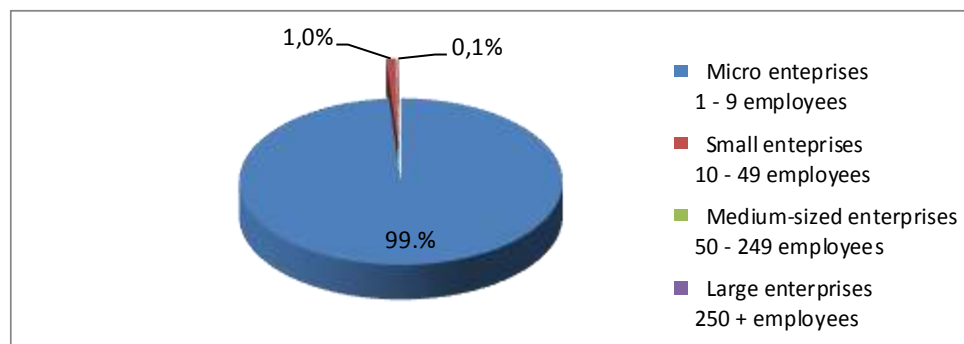
## Categorization of enterprises by size and gender

**Table 3. The number of SMEs in Q1 2019**

Classification	Number of employees	Number of businesses	%
Micro enterprises	1 - 9 employees	2376	98,8%
Small enterprises	10 - 49 employees	25	1,0%
Medium-sized enterprises	50 - 249 employees	2	0,1%
Large enterprises	250 + employees	1	-
<b>Total</b>		<b>2404</b>	<b>100,0%</b>

Classification	Number of employees	Number of businesses	%
Micro enterprises	1 - 9 employees	2376	98,8%
Small enterprises	10 - 49 employees	25	1,0%
Medium-sized enterprises	50 - 249 employees	2	0,1%
Large enterprises	250 + employees	1	-
<b>Total</b>		<b>2404</b>	<b>100,0%</b>

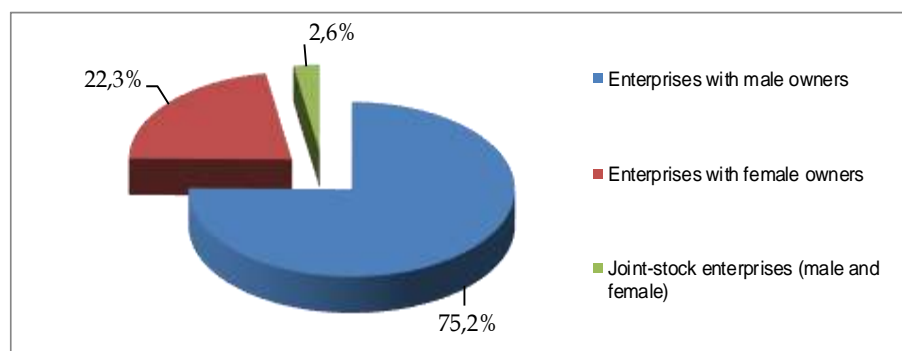
**Graph 4. Structure of enterprises by size in Q1 2019**



**Table 5. Structure of enterprises by gender of the owner in Q1 2019**

Total	Enterprises with male owners		Enterprises with female owners		Enterprises with mixed owners (male and female)	
2404	1807	75,2%	535	22,3%	62	2,6%

**Graph 6. Presentation of enterprises by gender of the owner in Q1 2019**

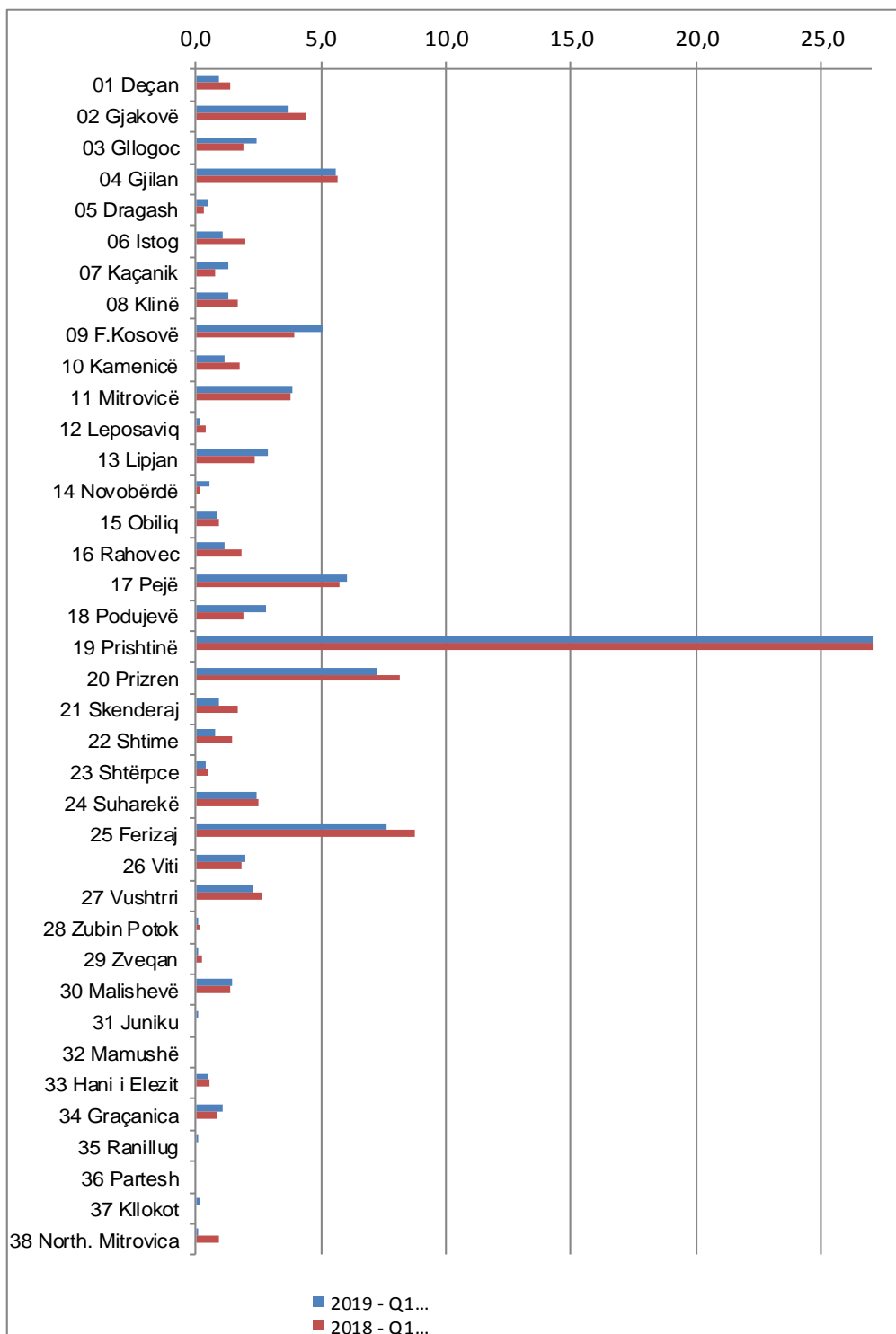


## 5 Number of registered enterprises by municipality

**Table 4. Number of registered enterprises by municipality and sector of economic activity in Q1 2019**

Municipality	Sector of economic activity																			
	A	B	C	D	E	F	G	H	I	J	K	L	M	N	O	P	Q	R	S	
<b>Total</b>	<b>2404</b>	<b>121</b>	<b>15</b>	<b>277</b>	<b>7</b>	<b>9</b>	<b>232</b>	<b>596</b>	<b>80</b>	<b>240</b>	<b>152</b>	<b>19</b>	<b>22</b>	<b>253</b>	<b>130</b>	<b>5</b>	<b>38</b>	<b>52</b>	<b>55</b>	<b>101</b>
01 Deçan	22	2	-	2	-	-	3	5	1	2	1	-	-	2	-	-	-	-	1	3
02 Gjakovë	90	4	-	12	-	-	9	26	1	9	1	-	-	11	5	-	4	3	2	3
03 Glogoc	59	3	-	6	-	1	14	14	1	7	1	-	-	1	4	-	2	1	1	3
04 Gjilan	134	3	-	16	-	-	13	42	10	16	6	1	-	10	6	1	1	3	3	3
05 Dragash	11	2	-	1	-	-	2	2	1	2	1	-	-	-	-	-	-	-	-	-
06 Istog	26	2	-	4	-	-	4	9	-	2	1	-	-	1	2	-	-	-	1	-
07 Kaçanik	32	2	-	8	-	1	5	5	-	3	2	-	-	-	1	-	1	-	-	4
08 Klinë	31	4	-	2	-	-	4	8	3	4	-	-	-	2	2	-	-	1	-	1
09 F.Kosovë	122	-	-	10	-	-	9	33	4	15	9	-	2	11	15	-	3	-	3	8
10 Kamenicë	27	2	1	5	-	-	2	9	-	1	2	1	-	2	-	-	-	1	1	-
11 Mitrovicë	92	-	2	5	-	-	7	26	5	12	11	-	-	9	7	-	1	-	2	5
12 Leposaviq	5	3	-	1	-	-	-	1	-	-	-	-	-	-	-	-	-	-	-	-
13 Lipjan	69	9	-	4	-	-	9	21	-	7	5	-	-	3	3	-	-	1	4	3
14 Novobërdë	13	9	-	1	-	-	-	-	-	2	-	-	-	-	-	-	-	-	-	1
15 Obiliq	20	-	-	2	-	1	1	4	-	5	1	-	1	1	-	-	1	-	-	3
16 Rahovec	27	-	1	5	1	-	3	8	3	2	-	-	-	2	1	-	-	-	-	1
17 Pejë	146	9	1	21	-	-	19	38	3	20	2	1	1	10	5	-	3	4	3	6
18 Podujevë	67	5	-	14	-	-	8	16	4	6	3	2	-	4	-	-	1	2	-	2
19 Prishtinë	759	23	7	50	4	2	44	170	18	67	79	10	12	139	46	4	15	23	17	29
20 Prizren	175	4	1	28	1	-	12	52	7	18	4	2	2	17	9	-	1	5	7	5
21 Skenderaj	23	6	-	6	-	-	1	5	1	1	1	-	-	2	-	-	-	-	-	-
22 Shtime	18	1	-	4	-	-	3	3	1	2	-	-	1	-	-	-	-	-	1	2
23 Shtërpçe	10	2	-	2	-	-	-	1	1	2	1	-	-	-	1	-	-	-	-	-
24 Suharekë	58	1	1	13	-	1	6	16	2	3	-	-	-	4	2	-	2	3	3	1
25 Ferizaj	183	7	1	30	1	1	24	42	8	16	8	-	1	16	9	-	2	2	5	10
26 Viti	47	4	-	12	-	1	12	8	-	4	2	-	-	-	2	-	-	-	-	2
27 Vushtrri	55	6	-	2	-	1	7	13	3	3	6	1	2	-	6	-	-	-	-	5
28 Zubin Potok	1	-	-	-	-	-	-	1	-	-	-	-	-	-	-	-	-	-	-	-
29 Zveqan	2	-	-	-	-	-	-	-	-	-	1	-	-	1	-	-	-	-	-	-
30 Malishevë	35	6	-	3	-	-	8	7	-	2	3	-	-	2	1	-	-	3	-	-
31 Juniku	1	1	-	-	-	-	-	-	-	-	-	-	-	-	-	-	-	-	-	-
32 Mamushë	-	0	0	0	0	0	0	0	0	0	0	0	0	0	0	0	0	0	0	0
33 Hani i Elezit	12	1	-	1	-	-	1	2	3	1	-	-	-	1	1	-	1	-	-	-
34 Graçanica	25	-	-	2	-	-	1	8	-	6	1	1	-	2	2	-	-	-	1	1
35 Ranillug	1	-	-	1	-	-	-	-	-	-	-	-	-	-	-	-	-	-	-	-
36 Partesh	-	-	-	-	-	-	-	-	-	-	-	-	-	-	-	-	-	-	-	-
37 Kllokot	5	-	-	4	-	-	1	-	-	-	-	-	-	-	-	-	-	-	-	-
38 North. Mitrovica	1	-	-	-	-	-	-	1	-	-	-	-	-	-	-	-	-	-	-	-

**Graph 7. Structure of registered enterprises by municipality in Q1 2019**



## 6 Registered individual and non-individual enterprises

**Table 5. Number of registered individual enterprises by municipality and sector of economic activity in Q1 2019**

Municipality	Sector of economic activity																			
	Agriculture, forestry and fishing	Mining and quarrying	Manufacturing	Electricity, gas, steam and air conditioning supply	Water supply, sewage, waste management and remediation activities	Construction	Wholesale and retail trade, repair of motor vehicles and motorcycles	Transportation and storage	Accommodation and food service activities	Information and communication	Financial and insurance activities	Real estate activities	Professional, scientific and technical activities	Administrative and support service activities	Public administration and protection: compulsory social protection	Education	Human health and social work activities	Arts, entertainment and recreation	Other service activities	
Code and name	Total	A	B	C	D	E	F	G	H	I	J	K	L	M	N	O	P	Q	R	S
	<b>929</b>	<b>80</b>	<b>-</b>	<b>108</b>	<b>-</b>	<b>1</b>	<b>62</b>	<b>215</b>	<b>44</b>	<b>106</b>	<b>50</b>	<b>5</b>	<b>7</b>	<b>67</b>	<b>48</b>	<b>2</b>	<b>15</b>	<b>25</b>	<b>28</b>	<b>66</b>
01 Deçan	12	1	-	2	-	-	1	3	-	1	-	-	-	-	-	-	-	-	1	3
02 Gjakovë	59	1	-	7	-	-	8	20	1	6	1	-	-	7	2	-	2	1	1	2
03 Glogoc	33	2	-	2	-	-	5	9	-	6	1	-	-	-	3	-	1	1	1	2
04 Gjilan	42	1	-	7	-	-	2	12	9	1	-	1	-	3	1	-	-	3	-	2
05 Dragash	10	2	-	1	-	-	2	1	1	2	1	-	-	-	-	-	-	-	-	-
06 Istog	7	-	-	-	-	-	1	2	-	1	-	-	-	1	1	-	-	-	1	-
07 Kaçanik	18	1	-	5	-	-	2	2	-	2	-	-	-	-	1	-	1	-	-	4
08 Klinë	9	3	-	1	-	-	-	1	2	-	-	-	-	1	1	-	-	-	-	-
09 F.Kosovë	36	-	-	2	-	-	-	7	2	5	4	-	-	3	7	-	-	-	-	6
10 Kamenicë	15	2	-	3	-	-	-	6	-	-	2	1	-	-	-	-	-	1	-	-
11 Mitrovicë	43	-	-	1	-	-	2	12	4	5	6	-	-	2	4	-	1	-	1	5
12 Leposaviq	1	-	-	-	-	-	-	1	-	-	-	-	-	-	-	-	-	-	-	-
13 Lipjan	27	7	-	2	-	-	1	8	-	2	2	-	-	-	-	-	-	1	3	1
14 Novobërdë	11	9	-	1	-	-	-	-	-	-	-	-	-	-	-	-	-	-	-	1
15 Obiliq	9	-	-	-	-	-	-	1	-	4	-	-	1	-	-	-	-	-	-	3
16 Rahovec	14	-	-	1	-	-	3	6	1	1	-	-	-	1	-	-	-	-	-	1
17 Pejë	49	4	-	5	-	-	3	13	-	12	-	-	-	3	1	-	1	1	2	4
18 Podujevë	33	4	-	6	-	-	6	6	2	3	2	-	-	1	-	-	-	2	-	1
19 Prishtinë	189	16	-	17	-	-	3	30	7	22	17	2	3	28	13	2	6	7	3	13
20 Prizren	105	3	-	16	-	-	4	34	4	11	3	1	1	9	6	-	-	3	7	3
21 Skenderaj	14	5	-	5	-	-	-	3	1	-	-	-	-	-	-	-	-	-	-	-
22 Shtime	14	1	-	1	-	-	3	2	1	2	-	-	1	-	-	-	-	-	1	2
23 Shtërpce	7	2	-	1	-	-	-	1	1	1	-	-	-	-	1	-	-	-	-	-
24 Suharekë	26	1	-	2	-	1	3	8	-	1	-	-	-	2	-	-	2	3	2	1
25 Ferizaj	60	4	-	10	-	-	5	10	6	7	3	-	-	2	3	-	-	-	4	6
26 Viti	15	1	-	4	-	-	2	3	-	2	-	-	-	-	1	-	-	-	-	2
27 Vushtrri	21	5	-	-	-	-	1	4	1	1	4	-	1	-	-	-	-	-	-	4
28 Zubin Potok	1	-	-	-	-	-	-	1	-	-	-	-	-	-	-	-	-	-	-	-
29 Zveçan	2	-	-	-	-	-	-	-	-	-	1	-	-	1	-	-	-	-	-	-
30 Malishevë	23	4	-	1	-	-	4	6	-	1	3	-	-	1	1	-	-	2	-	-
31 Juniku	-	-	-	-	-	-	-	-	-	-	-	-	-	-	-	-	-	-	-	-
32 Mamushë	-	-	-	-	-	-	-	-	-	-	-	-	-	-	-	-	-	-	-	-
33 Hani i Elezit	8	1	-	1	-	-	1	-	1	1	-	-	-	1	1	-	1	-	-	-
34 Graçanicë	13	-	-	1	-	-	-	3	-	6	-	-	-	1	1	-	-	-	1	-
35 Ranillug	1	-	-	1	-	-	-	-	-	-	-	-	-	-	-	-	-	-	-	-
36 Partesh	-	-	-	-	-	-	-	-	-	-	-	-	-	-	-	-	-	-	-	-
37 Kllokot	2	-	-	2	-	-	-	-	-	-	-	-	-	-	-	-	-	-	-	-
38 North. Mitrovica	-	-	-	-	-	-	-	-	-	-	-	-	-	-	-	-	-	-	-	-



**Table 6. Number of registered non-individual enterprises by municipality and sector of economic activity in Q1 2019**

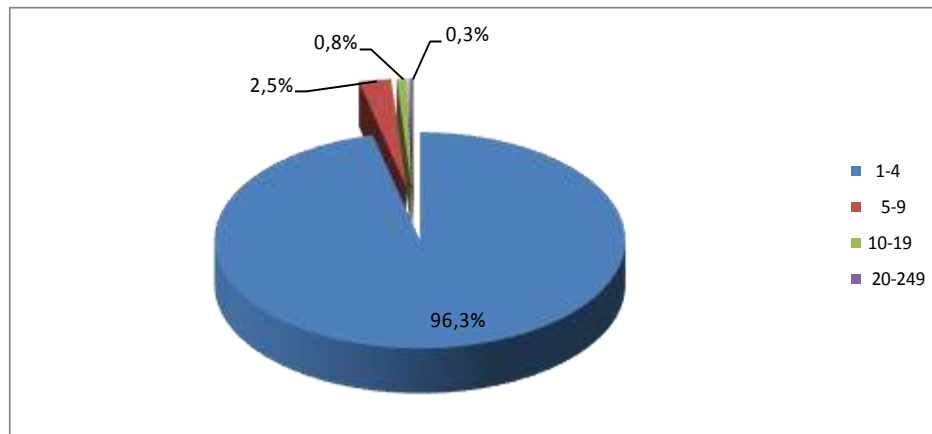
Municipality	Sector of economic activity																			
	Agriculture, forestry and fishing	Mining and quarrying	Manufacturing	Electricity, gas, steam and air conditioning supply	Water supply, sewage, waste management and remediation activities	Construction	Wholesale and retail trade, repair of motor vehicles and motorcycles	Transportation and storage	Accommodation and food service activities	Information and communication	Financial and insurance activities	Real estate activities	Professional, scientific and technical activities	Administrative and support service activities	Public administration and protection: compulsory social protection	Education	Human health and social work activities	Arts, entertainment and recreation	Other service activities	
Code and name	Total	A	B	C	D	E	F	G	H	I	J	K	L	M	N	O	P	Q	R	S
	1475	41	15	169	7	8	170	381	36	134	102	14	15	186	82	3	23	27	27	35
01 Deçan	10	1	-	-	-	-	2	2	1	1	1	-	-	2	-	-	-	-	-	-
02 Gjakovë	31	3	-	5	-	-	1	6	-	3	-	-	-	4	3	-	2	2	1	1
03 Glogoc	26	1	-	4	-	1	9	5	1	1	-	-	-	1	1	-	1	-	-	1
04 Gjilan	92	2	-	9	-	-	11	30	1	15	6	-	-	7	5	1	1	-	3	1
05 Dragash	1	-	-	-	-	-	-	1	-	-	-	-	-	-	-	-	-	-	-	-
06 Istog	19	2	-	4	-	-	3	7	-	1	1	-	-	-	1	-	-	-	-	-
07 Kaçanik	14	1	-	3	-	1	3	3	-	1	2	-	-	-	-	-	-	-	-	-
08 Klinë	22	1	-	1	-	-	4	7	1	4	-	-	-	1	1	-	-	1	-	1
09 F.Kosovë	86	-	-	8	-	-	9	26	2	10	5	-	2	8	8	-	3	-	3	2
10 Kamenicë	12	-	1	2	-	-	2	3	-	1	-	-	-	2	-	-	-	-	1	-
11 Mitrovicë	49	-	2	4	-	-	5	14	1	7	5	-	-	7	3	-	-	-	1	-
12 Leposaviq	4	3	-	1	-	-	-	-	-	-	-	-	-	-	-	-	-	-	-	-
13 Lipjan	42	2	-	2	-	-	8	13	-	5	3	-	-	3	3	-	-	-	1	2
14 Novobërdë	2	-	-	-	-	-	-	-	-	2	-	-	-	-	-	-	-	-	-	-
15 Obiliq	11	-	-	2	-	1	1	3	-	1	1	-	-	1	-	-	1	-	-	-
16 Rahovec	13	-	1	4	1	-	-	2	2	1	-	-	-	1	1	-	-	-	-	-
17 Pejë	97	5	1	16	-	-	16	25	3	8	2	1	1	7	4	-	2	3	1	2
18 Podujevë	34	1	-	8	-	-	2	10	2	3	1	2	-	3	-	-	1	-	-	1
19 Prishtinë	570	7	7	33	4	2	41	140	11	45	62	8	9	111	33	2	9	16	14	16
20 Prizren	70	1	1	12	1	-	8	18	3	7	1	1	1	8	3	-	1	2	-	2
21 Skenderaj	9	1	-	1	-	-	1	2	-	1	1	-	-	2	-	-	-	-	-	-
22 Shtime	4	-	-	3	-	-	-	1	-	-	-	-	-	-	-	-	-	-	-	-
23 Shtërpce	3	-	-	1	-	-	-	-	-	1	1	-	-	-	-	-	-	-	-	-
24 Suharekë	32	-	1	11	-	-	3	8	2	2	-	-	-	2	2	-	-	-	1	-
25 Ferizaj	123	3	1	20	1	1	19	32	2	9	5	-	1	14	6	-	2	2	1	4
26 Viti	32	3	-	8	-	1	10	5	-	2	2	-	-	-	1	-	-	-	-	-
27 Vushtrri	34	1	-	2	-	1	6	9	2	2	2	1	1	-	6	-	-	-	-	1
28 Zubin Potok	-	-	-	-	-	-	-	-	-	-	-	-	-	-	-	-	-	-	-	-
29 Zveqan	-	-	-	-	-	-	-	-	-	-	-	-	-	-	-	-	-	-	-	-
30 Malishevë	12	2	-	2	-	-	4	1	-	1	-	-	-	1	-	-	-	1	-	-
31 Juniku	1	1	-	-	-	-	-	-	-	-	-	-	-	-	-	-	-	-	-	-
32 Mamushë	-	-	-	-	-	-	-	-	-	-	-	-	-	-	-	-	-	-	-	-
33 Hani i Elezit	4	-	-	-	-	-	-	2	2	-	-	-	-	-	-	-	-	-	-	-
34 Graçanicë	12	-	-	1	-	-	1	5	-	-	1	1	-	1	1	-	-	-	-	1
35 Ranillug	-	-	-	-	-	-	-	-	-	-	-	-	-	-	-	-	-	-	-	-
36 Partesh	-	-	-	-	-	-	-	-	-	-	-	-	-	-	-	-	-	-	-	-
37 Kllokot	3	-	-	2	-	-	1	-	-	-	-	-	-	-	-	-	-	-	-	-
38 North. Mitrovica	1	-	-	-	-	-	-	1	-	-	-	-	-	-	-	-	-	-	-	-

## 7 Registered enterprises by sector of economic activity and number of employees

**Table 7. Number of registered enterprises by sector of economic activity and number of employees in Q1 2019**

Sector of economic activity	Total	Category of number of employees				
		1-4	5-9	10-19	20-249	250 +
<b>Total</b>	<b>2404</b>	<b>2314</b>	<b>61</b>	<b>20</b>	<b>8</b>	<b>1</b>
<i>A</i> Agriculture, forestry and fishing	121	120	1	-	-	-
<i>B</i> Mining and quarrying	15	14	-	-	-	1
<i>C</i> Manufacturing	277	259	15	2	1	-
<i>D</i> Electricity, gas, steam and air conditioning supply	7	7	-	-	-	-
<i>E</i> Water supply, sewage, waste management and remediation activities	9	9	-	-	-	-
<i>F</i> Construction	232	220	7	4	1	-
<i>G</i> Wholesale and retail trade, repair of motor vehicles and motorcycles	596	580	10	3	3	-
<i>H</i> Transport and storage	80	79	-	-	1	-
<i>I</i> Accommodation and food service activities	240	225	10	4	1	-
<i>J</i> Information and communication	152	145	4	2	1	-
<i>K</i> Financial and insurance activities	19	19	-	-	-	-
<i>L</i> Real estate activities	22	22	-	-	-	-
<i>M</i> Professional, scientific and technical activities	253	248	5	-	-	-
<i>N</i> Administrative and support service activities	130	122	4	4	-	-
<i>O</i> Public administration and defense	5	4	1	-	-	-
<i>P</i> Education	38	34	3	1	-	-
<i>Q</i> Human health and social work activities	52	51	1	-	-	-
<i>R</i> Arts, entertainment and recreation	55	55	-	-	-	-
<i>S</i> Other service activities	101	101	-	-	-	-

**Graph 8. Structure of registered enterprises by category of number of employees, Q1 2019**

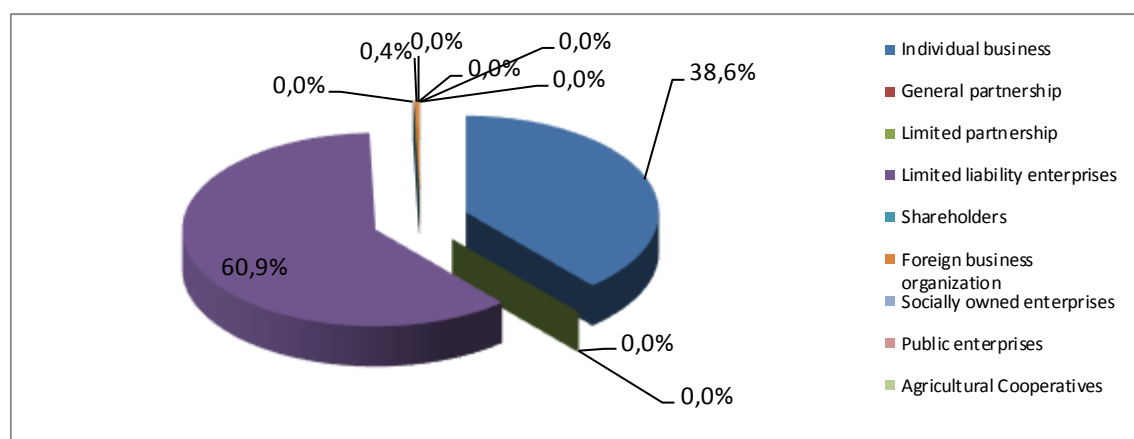


## 8 Registered enterprises by legal form

**Table 8. Number of registered enterprises by sector of economic activity and legal form of organization in Q1 2019**

Sector of economic activity	Legal form and organization										
	Total	Individual business	General partnership	Limited partnership	Limited liability enterprises	Shareholders	Foreign business organization	Socially owned enterprises	Public enterprises	Agricultural Cooperatives	Other companies under the jurisdiction of KTA
<b>Total</b>	<b>2404</b>	<b>929</b>	-	-	<b>1463</b>	<b>1</b>	<b>10</b>	-	-	<b>1</b>	-
A Agriculture, forestry and fishing	121	80	-	-	41	-	-	-	-	-	-
B Mining and quarrying	15	-	-	-	14	1	-	-	-	-	-
C Manufacturing	277	108	-	-	169	-	-	-	-	-	-
D Electricity, gas, steam and air conditioning supply	7	-	-	-	7	-	-	-	-	-	-
E Water supply, sewage, waste management and remediation activities	9	1	-	-	7	-	-	-	1	-	-
F Construction	232	62	-	-	166	4	-	-	-	-	-
G Wholesale and retail trade, repair of motor vehicles and motorcycles	596	215	-	-	379	2	-	-	-	-	-
H Transport and storage	80	44	-	-	36	-	-	-	-	-	-
I Accommodation and food service activities	240	106	-	-	134	-	-	-	-	-	-
J Information and communication	152	50	-	-	100	2	-	-	-	-	-
K Financial and insurance activities	19	5	-	-	14	-	-	-	-	-	-
L Real estate activities	22	7	-	-	15	-	-	-	-	-	-
M Professional, scientific and technical activities	253	67	-	-	185	1	-	-	-	-	-
N Administrative and support service activities	130	48	-	-	82	-	-	-	-	-	-
O Public administration and defense	5	2	-	-	3	-	-	-	-	-	-
P Education	38	15	-	-	23	-	-	-	-	-	-
Q Human health and social work activities	52	25	-	-	26	1	-	-	-	-	-
R Arts, entertainment and recreation	55	28	-	-	27	-	-	-	-	-	-
S Other service activities	101	66	-	-	35	-	-	-	-	-	-

**Graph 9. Registered enterprises by legal form of organization in Q1 2019**

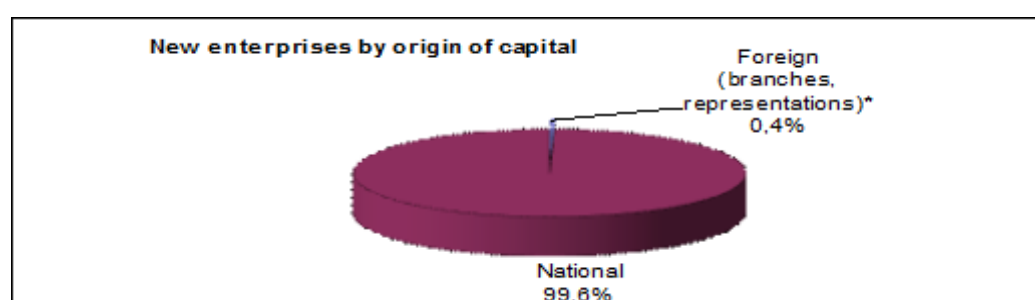


## 9 Registered enterprises by origin of capital

**Table 9. Number of registered enterprises by origin of capital in Q1 2019**

Category of number of employees	Total		Foreign (branches, representations)*		National	
	Number	%	Number	%	Number	%
	2404	100%	10	100,0%	2394	100%
1-4	2.314	96,3%	9	90,0%	2.305	96,3%
5-9	61	2,5%	-	-	61	2,5%
10-19	20	0,8%	1	10,0%	19	0,8%
20-249	8	0,3%	-	-	8	0,3%
250+	1	0,0%	-	-	1	0,0%

**Graph 10. Structure of registered enterprises by origin of capital in Q1 2019**

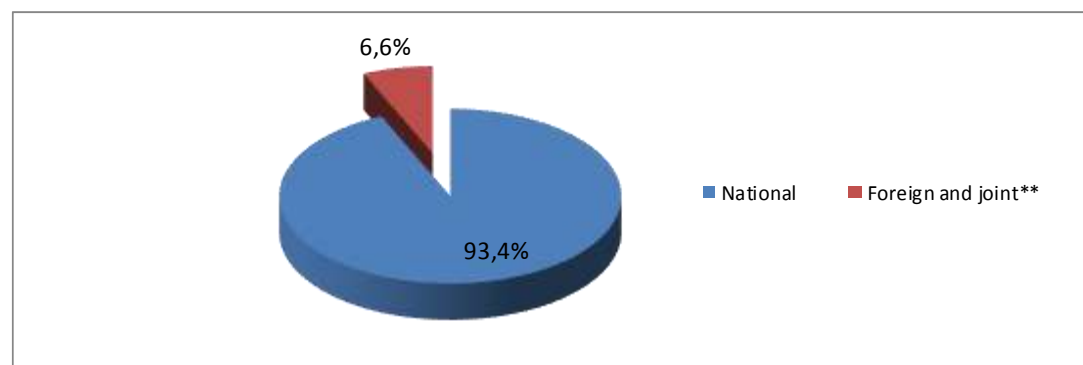


Note: The sign "\*" indicates that we are dealing only with foreign businesses defined in page 8 (Foreign businesses as defined by KBRA).

**Table 10. Number of registered enterprises by type of ownership in Q1 2019**

Total	National	Foreign and joint**		
		Total	Joint (Local + Foreign)	Foreign (branches, representations)*
2.404	2.242	162	151	11

**Graph 11. Structure of registered enterprises by type of ownership in Q1 2019**



Note: The sign "\*\*" in Table 11 and Graph 10 shows that we are dealing with a broader concept of definition of the origin of capital or ownership (registered enterprises with foreign and joint ownership).

## 10 Terminated enterprises

**Table 11. Number of terminated enterprises by municipality and sector of economic activity in Q1 2019**

Municipality	Sector of economic activity																			
	Agriculture, forestry and fishing	Mining and quarrying	Manufacturing	Electricity, gas, steam and air conditioning supply	Water supply, sewage, waste management and remediation activities	Construction	Wholesale and retail trade, repair of motor vehicles and motorcycles	Transportation and storage	Accommodation and food service activities	Information and communication	Financial and insurance activities	Real estate activities	Professional, scientific and technical activities	Administrative and support service activities	Public administration and protection: compulsory social protection	Education	Human health and social work activities	Arts, entertainment and recreation	Other service activities	
Code and name	Total	A	B	C	D	E	F	G	H	I	J	K	L	M	N	O	P	Q	R	S
	<b>441</b>	<b>25</b>	<b>1</b>	<b>30</b>	<b>-</b>	<b>4</b>	<b>39</b>	<b>164</b>	<b>26</b>	<b>51</b>	<b>17</b>	<b>3</b>	<b>1</b>	<b>22</b>	<b>8</b>	<b>1</b>	<b>3</b>	<b>8</b>	<b>12</b>	<b>26</b>
01 Deçan	13	-	-	2	-	-	3	5	1	1	-	-	-	-	-	-	-	1	-	-
02 Gjakovë	33	2	-	-	-	-	-	17	2	6	-	1	-	1	-	-	1	1	1	1
03 Glogoc	12	-	-	1	-	1	-	3	1	1	1	-	-	-	-	-	-	-	2	2
04 Gjilan	21	2	-	1	-	-	4	4	2	1	2	-	-	1	1	-	-	-	1	2
05 Dragash	3	-	-	-	-	-	-	2	-	-	1	-	-	-	-	-	-	-	-	-
06 Istog	4	-	-	1	-	-	-	3	-	-	-	-	-	-	-	-	-	-	-	-
07 Kaçanik	5	1	-	1	-	-	2	-	-	-	-	-	-	-	-	-	1	-	-	-
08 Klinë	9	1	-	1	-	-	1	1	-	1	-	-	1	2	-	-	-	-	-	1
09 F.Kosovë	11	-	-	3	-	-	1	3	1	1	1	-	-	-	-	-	-	-	1	-
10 Kamenicë	2	-	-	-	-	-	1	-	-	-	-	-	-	1	-	-	-	-	-	-
11 Mitrovicë	26	1	-	-	-	-	2	9	4	2	-	1	-	-	-	-	-	-	4	3
12 Leposaviq	2	-	-	-	-	-	-	1	-	-	-	-	-	-	-	-	-	-	-	1
13 Lipjan	8	1	-	-	-	1	-	2	1	1	1	-	-	-	-	-	-	-	-	1
14 Novobërdë	-	-	-	-	-	-	-	-	-	-	-	-	-	-	-	-	-	-	-	-
15 Obiliq	2	1	-	-	-	-	-	1	-	-	-	-	-	-	-	-	-	-	-	-
16 Rahovec	14	1	-	1	-	-	-	6	-	1	-	-	-	-	-	1	-	-	1	3
17 Pejë	19	2	-	3	-	-	2	6	-	1	2	-	-	1	1	-	-	1	-	-
18 Podujevë	14	-	-	2	-	-	1	5	1	3	-	-	-	-	-	-	-	1	-	1
19 Prishtinë	91	2	1	6	-	-	4	34	1	16	5	1	-	13	3	-	1	1	-	3
20 Prizren	52	-	-	5	-	1	3	22	4	5	3	-	-	1	1	-	-	1	-	6
21 Skenderaj	15	1	-	-	-	1	4	5	1	2	-	-	-	-	-	-	-	1	-	-
22 Shtime	3	1	-	-	-	-	1	1	-	-	-	-	-	-	-	-	-	-	-	-
23 Shtërpce	2	-	-	-	-	-	-	1	-	-	-	-	-	-	1	-	-	-	-	-
24 Suharekë	22	-	-	2	-	-	6	9	2	2	1	-	-	-	-	-	-	-	-	-
25 Ferizaj	22	1	-	-	-	-	1	12	1	2	-	-	-	1	1	-	-	-	2	1
26 Viti	8	4	-	-	-	-	-	3	-	1	-	-	-	-	-	-	-	-	-	-
27 Vushtrri	15	1	-	-	-	-	2	4	4	4	-	-	-	-	-	-	-	-	-	-
28 Zubin Potok	1	-	-	-	-	-	-	-	-	-	-	-	-	-	-	-	-	-	-	1
29 Zveçan	1	-	-	-	-	-	-	1	-	-	-	-	-	-	-	-	-	-	-	-
30 Malishevë	7	3	-	-	-	-	-	2	-	-	-	-	-	1	-	-	-	1	-	-
31 Juniku	-	-	-	-	-	-	-	-	-	-	-	-	-	-	-	-	-	-	-	-
32 Mamushë	-	-	-	-	-	-	-	-	-	-	-	-	-	-	-	-	-	-	-	-
33 Hani i Elezit	-	-	-	-	-	-	-	-	-	-	-	-	-	-	-	-	-	-	-	-
34 Graçanica	2	-	-	1	-	-	-	1	-	-	-	-	-	-	-	-	-	-	-	-
35 Ranillug	-	-	-	-	-	-	-	-	-	-	-	-	-	-	-	-	-	-	-	-
36 Partesh	-	-	-	-	-	-	-	-	-	-	-	-	-	-	-	-	-	-	-	-
37 Kllokot	-	-	-	-	-	-	-	-	-	-	-	-	-	-	-	-	-	-	-	-
38 North. Mitrovica	2	-	-	-	-	-	1	1	-	-	-	-	-	-	-	-	-	-	-	-

# Kosovo Agency of Statistics

## *short description*

**Kosovo Agency of Statistics** is a professional institution which deals with collection, processing and publication of official statistical data. As such acts since 1948 and has passed through several historical stages, structured according to state regulation of those times.

On 2 August 1999, the Agency has resumed his professional work (after nine years of interruption of all statistical series detrimental to the interest of Kosovo), as an independent institution under the Ministry of Public Administration. Since 12.12.2011 the Agency operates in the frames of the Prime Minister's Office. Office is funded by the Kosovo Consolidated Budget, but also by donors for specific projects and for technical professional support.

**Kosovo Agency of Statistics** acts according to the Law No. 04/L-036 which entered into force on 12.12.2011. Programme of Official Statistics 2013/2017 is in implementation for the development of statistical system in correlation with the European Union statistics (EUROSTAT).

**Kosovo Agency of Statistics** has this organizational structure: production departments; Department of Economic statistics, Department of National Accounts, Department of Agriculture and Environment statistics and Department of Social statistics. **Support Departments**; Department of Methodology and Information Technology, Department of Policy Planning, Coordination and Communication, Department of Census and survey and Department of Administration. **Within the Agency are also established Regional Offices**; Gjakove, Gjilan, Mitrovica, Peja, Prizren, Pristina and Ferizaj

In KAS are employed in total 155 workers, of whom 100 (68,0 %) at the headquarters of the Agency, while in the Regional Offices, 47 (32,0%). Agency's educational qualifying structure is as follows: 75,5% with university education, 12,3% with with non-tertiary education, and 12.3% with secondary education.

We have professional and technical cooperation with all Ministries of the Government of Kosovo, especially with the Ministry of Economy and Finance, Central Bank of Kosovo, with international institutions, EUROSTAT, International Monetary Fund, World Bank, Sweden's SIDA, DFID, UNFPA, UNDP, UNVEF, and with the statistical institutions of the countries in the region.

**Kosovo Agency of Statistics** almost completely covers the territory of Kosovo, based on the statistical structure of the enumeration areas as the basic unit and sole in the country from which it gets first hand information. All surveys conducted in the field use the extension of the samples in these enumeration areas but also a statistical methodology according to international recommendations. During the collection of statistical data and reports from reporting entities are involved professionals, technicians, administrators, servants of the country offices, field enumerators from regional offices, etc.

In 2011, the project of Population Census , Households and Dwellings was successfully implemented, and in 2014 was successfully carried out the Agriculture Census. The result obtained from these censuses will have an important role in the development policies.

**The mission of the Agency**; to meet the needs of users with qualitative statistical data, objective, in time and space so that users have reliable base to conduct regular analysis in the interest of planning and project development at the municipal and country level. To support government institutions, scientific institutes, research academies, businesses in order to provide proper information for decision-makers and other users in Kosovo.

- **Address: KOSOVO AGENCY OF STATISTICS**  
Street. "Zenel Salihu", No. 4, 10000 Pristina
- **Telephone:** +383 (0) 38 200 31 129  
CEO: +383 (0) 38 200 31 112
- **Fax::** +383 (0) 38 235 033
- **E-mail:** [infoask@rks-gov.net](mailto:infoask@rks-gov.net)
- **Web:** <http://ask.rks-gov.net>