



Republika e Kosovës
Republika Kosova-Republic of Kosovo
Qeveria - Vlada - Government
Zyra e Kryeministrit -Ured Premijera -Office of the Prime Minister
Agjencia e Statistikave të Kosovës - Agencija za Statistike Kosova - Kosovo Agency of Statistics

Series 3: Economic Statistics

Statistical Repertoire of Economic Enterprises in Kosovo Q2 2018



AGJENCIA E STATISTIKAVE TË KOSOVËS
AGENCIJA ZA STATISTIKE KOSOVA
KOSOVO AGENCY OF STATISTICS

Foreword

Kosovo Agency of Statistics (KAS) has prepared publication of "**Statistical Repertoire of Enterprises in Kosovo for Q2 2018**", on new registered businesses at the Kosovo Business Registration Agency (KBRA) from 01.04.2018 until 31.06.2018 (second quarter of 2018).

Statistical Business Register (SBR) is part of KAS which contains basic information for all businesses that exercise economic activity in the territory of the Republic of Kosovo and as such serves for statistics and analysis of demographics of the business, sampling design and for raising the country-level results for all surveys conducted with businesses. SBR also serves as an important source of information for calculating Gross Domestic Product.

SBR is constructed and is continuously updated based on two administrative data sources (KBRA and Tax Administration of Kosovo), as well as from regular statistical surveys conducted by KAS.

Continuous demand for statistical data on enterprises are daily requirements from different users whether they are internal or external users of data from KAS, therefore based on these requirements we have prepared various tabular and graphical data.

We believe that this publication will serve as a useful reference base for all users of KAS statistical data and will serve as useful and relevant economic information for Kosovo.

Comments, remarks, suggestions and proposals regarding this publication are welcome and they can be sent to: muhamet.kastrati@rks-gov.net

Statistical Repertoire of Enterprises in Kosovo is a regular quarterly publication.

NOTE: From 1 September, 2014, the nomenclature of economic activities is in the new version NACE Rev. 2, and some of the previously published data are converted into this version.

Publication was prepared by:

Ilir T. Berisha – Director of Department,
Ismajl Sahiti – Head of Division,
Hysni Elshani - Head of Sector,
Muhamet Kastrati - IT specialist for SBR,
Luljeta Krasniqi - Senior Officer,
Ahmet Cakolli –Design Officer.

August, 2018

Chief Executive Officer, KAS
Isa Krasniqi

List of Abbreviations

KAS Kosovo Agency of Statistics

SBR Statistical Business Register

KBRA Kosovo Business Registration Agency

TAK Tax Administration of Kosovo

MTI Ministry of Trade and Industry

GDP Gross Domestic Product

KPA Kosovo Privatization Agency

EC European Commission

NEA Nomenclature of Economic Activities

NACE Rev. 1 (Nomenclature of Economic Activities EC - 1st version)

NACE Rev.2 (Nomenclature of Economic Activities EC - 2nd Version)

SMEs Small and medium-sized enterprises

Q1 First quarter

Q2 Second quarter

Q3 Third quarter

Q4 Fourth quarter

Symbols

- No occurrence

: Missing data

List of contents

	Page
1 Characteristics of enterprises registered in Q2 2018.....	5
2 Methodological explanations and definitions.....	6
2.1. Definitions.....	7
2.2. Legal forms of organization of business.....	8
3 New and terminated enterprises according to quarter	9
4 Enterprises according to economic sector, legal form of organization and the category of number of employees	11
Categorization of enterprises according to size and gender	12
5 Number of registered enterprises according to municipality	13
6 Registered individual and non-individual enterprises	15
7 Registered enterprises according to sector of economic activity and number of employees.....	17
8 Registered enterprises according to legal form	18
9 Registered enterprises according to origin of capital	19
10 Terminated enterprises	20

=

1 Characteristics of enterprises registered in Q2 2018

In the second quarter of 2018 (Q2 2018) a total of 2636 enterprises were registered.

Growth by 3.1% of registered enterprises has been observed compared with the previous quarter (Q1 2018).

Growth by 17.8% of registered enterprises has been observed if compared with the same quarter of the last year (Q2 2017).

The most preferred economic activities during this quarter were: trade with 723 registered enterprises (27.4%), manufacture with 299 registered enterprises (11.3%), accommodation and food service activities with 277 registered enterprises (10.5%), construction with 260 registered enterprises (9.9%), agriculture, forestry and fishing with 198 registered enterprises (7.5%), professional, scientific and technical activities with 170 registered enterprises (6.4%) while other activities participate in smaller scale.

In the category of 1 to 4 employees there were 2537 enterprises registered in this quarter (96.2%), with 5 to 9 employees were 61 enterprises (2.3%), with 10 to 19 employees were 25 enterprises (0.9%), with 20 to 249 employees with 13 enterprises (0.5%), while in the category of 250 and more employees there were no enterprises registered during this quarter.

Regarding the geographic extent of the enterprises registered at the municipal level, as in every quarter prevails the municipality of Prishtina with 660 registered enterprises (25.1%), Ferizaj with 233 registered enterprises (8.9%), Prizren with 194 registered enterprises (7.4%), Gjilan with 159 registered enterprises (6.1%), Peja with 153 registered enterprises (5.8%), Gjakova with 102 registered enterprises (3.9%), while other municipalities have smaller number of registered enterprises in this quarter.

2 Methodological explanations and definitions

Statistical Business Register (SBR) serves for statistical purposes and should clearly identify the units in order to:

- Enable obtaining the information about them via administrative sources.
- Enable the preparation of samplings; coordination of surveys and raising their results at the country level;
- Enable demographic analysis of enterprises and related entities.
- Provide input data for calculating Gross Domestic Product (GDP).

Statistical Business Register (SBR) - **Includes** all legal entities (enterprises) that exercise economic activity within the territory of Kosovo.

Does not include: Public administration, Non-profit Organizations and International Organizations.

Sources for updating the variables of SBR are:

- Administrative
 - o Information from the Kosovo Business Registration Agency
 - o Information from the Tax Administration of Kosovo
- Statistical
 - o Structural Business Survey
 - o Short-term Statistical Surveys
 - o Survey about Hotel Services
 - o Collection of Producer Prices
 - o Collection of Import Prices

Main variables in the SBR are grouped by:

- **Identification variables**
 - o Number of business registration (NBR), name, legal form, ownership, address, communication (phone, fax, email, etc.)
- **Stratified variables**
 - o Main economic activity (NACE Rev.2), size by employees
- **Demographic variables**
 - o Date of registration, date of termination/closure
- **Updated variables are**
 - o Status of activity (active or inactive)
 - o Economic activity of the enterprise
 - o Size by employees
 - o Address, and communication variables (telephone, fax, mobile, e-mail)

2.1. Definitions

Nomenclature of Economic Activities (NACE) is a four-digit level classification of economic activity exercised in different subjects.

This nomenclature is translation and adaptation of the European Classification of Economic Activities (NACE Rev. 2. in English).

The use of this nomenclature is mandatory since 1 September, 2014 by the institutions of the Republic of Kosovo and based on the regulation No. 11/2013 adopted by the Government of the Republic of Kosovo.

The structure of economic activities NACE Rev. 2 consists of 21 sections presented below labelled with letters from A to U.

- A. Agriculture, forestry and fishing
- B. Mining and quarrying
- C. Manufacturing
- D. Electricity, gas, steam and air conditioning supply
- E. Water supply, sewerage, waste management and remediation activities
- F. Construction
- G. Wholesale and retail trade, repair of motor vehicles and motorcycles
- H. Transportation and storage
- I. Accommodation and food service activities
- J. Information and communication
- K. Financial and insurance activities
- L. Real estate activities
- M. Professional, scientific and technical activities
- N. Administrative and support service activities
- O. Public administration and defense
- P. Education
- Q. Human health and social work activities
- R. Arts, entertainment and recreation
- S. Other services activities
- T. Activities of households as employers
- U. Activities of extraterritorial organizations and bodies

Classes of economic activities according to the new nomenclature **NACE Rev. 2** are total of 615 of them, which are encoded by four digit code ranging from 0111 to 9900.

2.2. Legal forms of organization of business

Definitions applied to legal forms of enterprises under Regulation 2001/16 and Law No. 02/L123 on Business Organizations which are applied when registering in the KBRA, are as follows:

1. **Individual business** - is the **only natural person** who performs economic activities for the purpose of profit and who is registered in the KBRA. In the individual business the owner has unlimited liability for all debts of the company. The company has an official name or includes the surname of the lawful owner
2. **General partnership** - The general partnership, all partners jointly respond without restriction for partnership debts. A partnership has a label, which may include the name of one or more partners.
3. **Limited partnership** - In limited partnerships, except "unlimited" partners (partners responsible jointly without limitation for the debts of the company) also participate "limited" partners or those responsible for the company's obligations to the limit of the value of their founding contributions / capital.
4. **Limited liability enterprises** - Limited liability enterprises are those enterprises that are established by one or several founders, who answer only to the limit of the value of their contribution. Limited liability enterprise has a label, which may include the name of one or more partners.
5. **Shareholders** – Shareholders are those whose capital is divided into shares and shareholders respond only to the limit of the value of their contribution. Shareholder enterprise (a joint stock enterprises) can be established by having one or more shareholders.
6. **Foreign business organization** - A foreign company is a business and from the moment of registration is considered a branch in Kosovo that has no identity of legal person. After its registration it shall enjoy all the rights and obligations established under the applicable law.
7. **Social enterprise** - Social enterprise means a legal person that most assets and capital are socially owned. These enterprises until the privatization are monitored and registered by the Kosovo Privatization Agency under the Law on Commercial Companies No.02/L-123.
8. **Public enterprise** - Public enterprise is the enterprise which carries out activities of general interest which is established by the state. Public enterprise is monitored by the government and organized as a joint stock company in accordance with applicable law on Commercial Companies. All ownership interests in a public company will be represented by shares and these shares will be registered.
9. **Agricultural cooperative** - Agricultural cooperative is a business organization created by natural or legal persons who must be farmers who contribute with their private property to the share of capital.

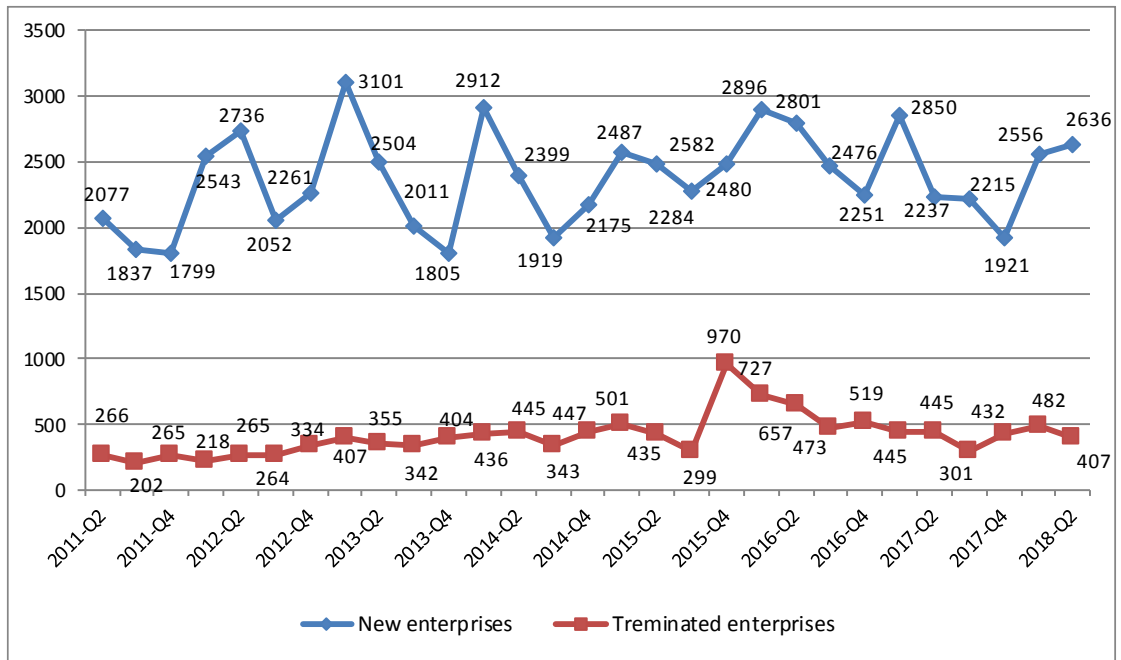
10. **Enterprises under the jurisdiction of the KPA** - are ex-social owned enterprises which are now managed and supervised by the KPA (Kosovo Privatization Agency).

3 New and terminated enterprises according to quarter

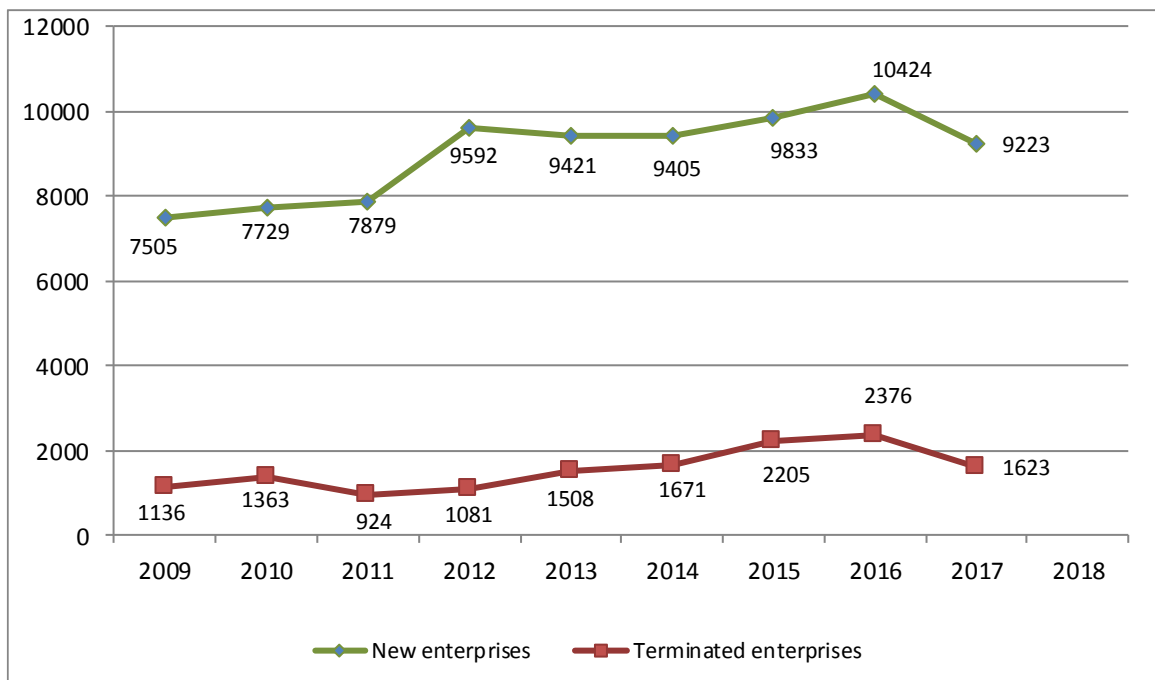
Table 1. Number of registered enterprises according to quarter and sector of economic activity

Period	Total	Sector of economic activity																		
		A	B	C	D	E	F	G	H	I	J	K	L	M	N	O	P	Q	R	S
2013 - Q1	3100	301	10	299	9	19	337	867	201	264	104	6	135	169	60	9	32	48	54	176
2013 - Q2	2504	142	7	258	2	14	227	759	107	246	101	4	95	162	65	9	28	43	52	183
2013 - Q3	2011	122	7	163	6	11	201	565	108	240	82	8	15	119	53	6	20	48	63	174
2013 - Q4	1805	188	5	152	5	6	178	543	109	161	70	2	12	135	36	9	18	34	62	80
2013 Total	9420	753	29	872	22	50	943	2734	525	911	357	20	257	585	214	33	98	173	231	613
2014 - Q1	2911	205	10	283	4	13	284	887	181	293	121	12	21	180	77	12	33	50	88	157
2014 - Q2	2399	186	9	283	3	16	207	704	99	282	95	8	10	146	61	11	20	39	55	165
2014 - Q3	1919	115	7	196	3	13	146	574	111	237	61	11	7	97	49	2	18	33	60	179
2014 - Q4	2175	168	6	216	14	9	166	649	143	222	80	12	21	147	65	17	19	51	50	120
2014 Total	9404	674	32	978	24	51	803	2814	534	1034	357	43	59	570	252	42	90	173	253	621
2015 - Q1	2582	255	7	276	8	12	237	784	143	253	104	12	15	144	80	6	20	36	57	133
2015 - Q2	2487	212	12	261	5	13	193	751	142	263	98	15	15	139	76	10	29	67	60	126
2015 - Q3	2284	208	8	239	4	8	160	622	108	256	86	43	19	123	66	3	25	49	68	189
2015 - Q4	2480	270	5	271	13	15	163	746	131	246	80	25	25	175	74	6	35	35	58	107
2015 Total	9833	945	32	1047	30	48	753	2903	524	1018	368	95	74	581	296	25	109	187	243	555
2016 - Q1	2896	261	16	343	12	17	254	820	151	249	108	68	14	183	82	8	40	63	73	134
2016 - Q2	2801	223	6	334	11	13	202	779	150	326	114	34	17	170	101	6	42	60	51	162
2016 - Q3	2476	372	6	258	9	26	194	552	125	232	105	28	15	122	81	8	31	46	77	189
2016 - Q4	2251	234	6	246	10	9	177	587	102	210	96	48	12	179	89	2	28	35	70	111
2016 Total	10424	1090	34	1181	42	65	827	2738	528	1017	423	178	58	654	353	24	141	204	271	596
2017 - Q1	2850	350	12	265	10	11	269	799	115	261	118	23	23	188	110	6	39	50	76	125
2017 - Q2	2237	96	11	234	6	8	202	623	84	278	100	30	16	189	110	1	15	50	52	132
2017 - Q3	2215	245	6	225	5	9	188	529	78	208	116	20	17	186	91	6	30	45	51	160
2017 - Q4	1921	131	6	166	17	10	180	511	70	183	107	37	9	171	90	5	26	46	52	104
2017 Total	9223	822	35	890	38	38	839	2462	347	930	441	110	65	734	401	18	110	191	231	521
2018 - Q1	2556	127	7	316	7	13	266	722	94	247	114	23	14	204	111	3	29	59	69	131
2018 - Q2	2636	198	10	299	6	9	260	723	93	277	114	24	15	170	125	9	20	62	86	136

Graph 1. Number of registered and terminated enterprises according to quarter



Graph 2: Number of registered and terminated enterprises according to year

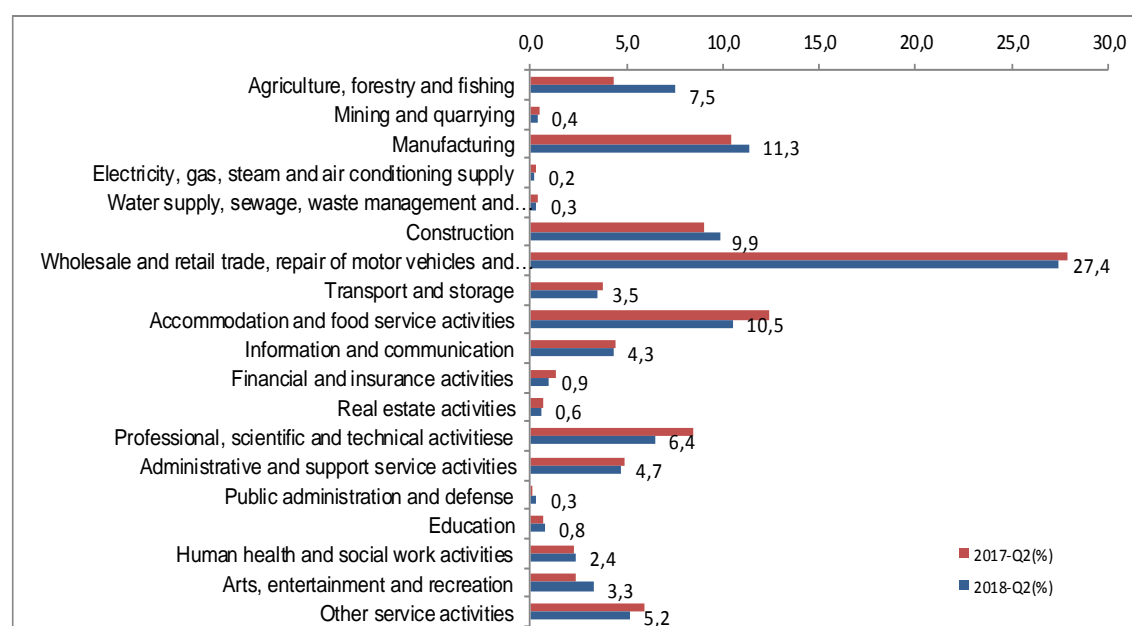


4 Enterprises according to economic sector, legal form of organization and the category of number of employees

Table 2. Number of registered enterprises according to sector of economic activity, type and the number of employees in Q2 2018

Sector of economic activity	Total	Category of number of employees					
		individual businesses			non-individual businesses		
		Total	1-4	5 +	Total	1-4	5 +
Total	2636	1228	1226	2	1408	1311	97
A Agriculture, forestry and fishing	198	174	174	-	24	24	-
B Mining and quarrying	10	1	1	-	9	9	-
C Manufacturing	299	146	146	-	153	131	22
D Electricity, gas, steam and air conditioning supply	6	1	1	-	5	4	1
E Water supply, sewage, waste management and remediation activities	9	3	3	-	6	6	-
F Construction	260	86	85	1	174	157	17
G Wholesale and retail trade, repair of motor vehicles and motorcycles	723	322	322	-	401	384	17
H Transport and storage	93	57	57	-	36	36	-
I Accommodation and food service activities	277	121	120	1	156	139	17
J Information and communication	114	28	28	-	86	78	8
K Financial and insurance activities	24	6	6	-	18	18	-
L Real estate activities	15	4	4	-	11	11	-
M Professional, scientific and technical activities	170	50	50	-	120	114	6
N Administrative and support service activities	125	34	34	-	91	87	4
O Public administration and defense	9	1	1	-	8	8	-
P Education	20	3	3	-	17	17	-
Q Human health and social work activities	62	27	27	-	35	35	-
R Arts, entertainment and recreation	86	52	52	-	34	29	5
S Other service activities	136	112	112	-	24	24	-

Graph 3. Enterprises registered according to economic sector in Q2 2018



Categorization of enterprises according to size and gender

Table 3. The number of SMEs in Q2 2018

Classification employees	Number of employees	Number of businesses	%
Micro enterprises	1 - 9 employees	2598	98,6%
Small enterprises	10 - 49 employees	36	1,4%
Medium-sized enterprises	50 - 249 employees	2	0,1%
Large enterprises	250 + employees	-	-
Total		2636	100,0%

Graph 4. Structure of enterprises according to size in Q2 2018

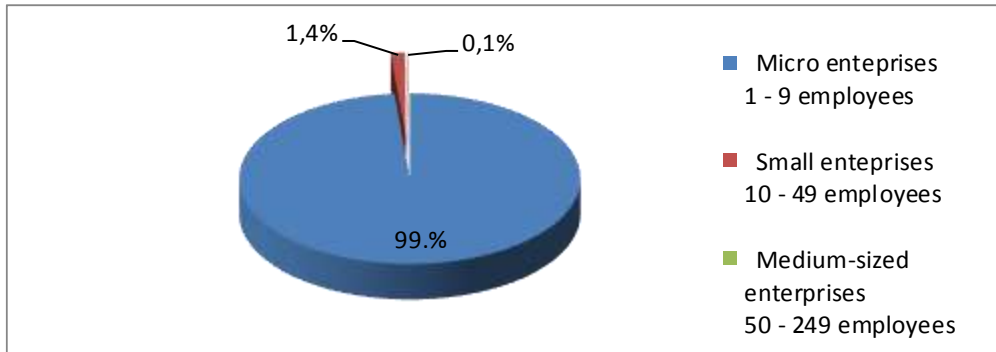
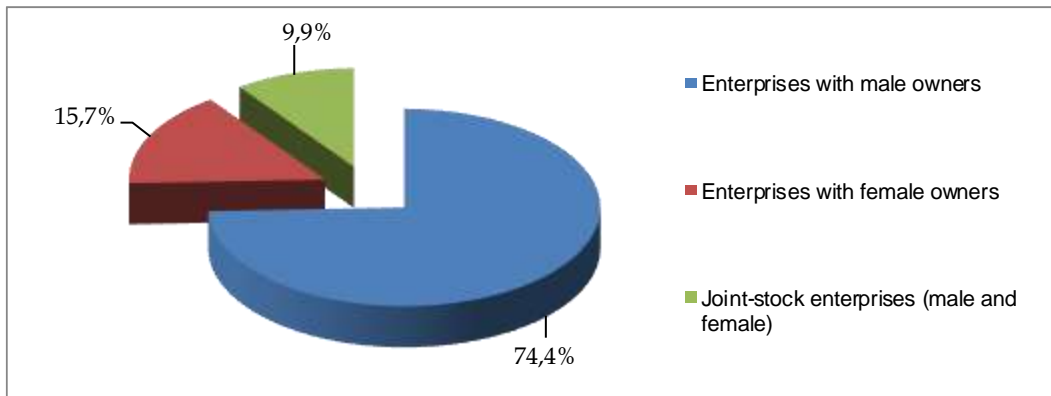


Table 5. Structure of enterprises according to gender of the owner in Q2 2018

Structure of registered enterprises according to gender of the owners						
Total	Enterprises with male owners		Enterprises with female owners		Enterprises with mixed owners (male and female)	
2636	1961	74,4%	413	15,7%	262	9,9%

Graph 6. Presentation of enterprises according to gender of the owner in Q2 2018

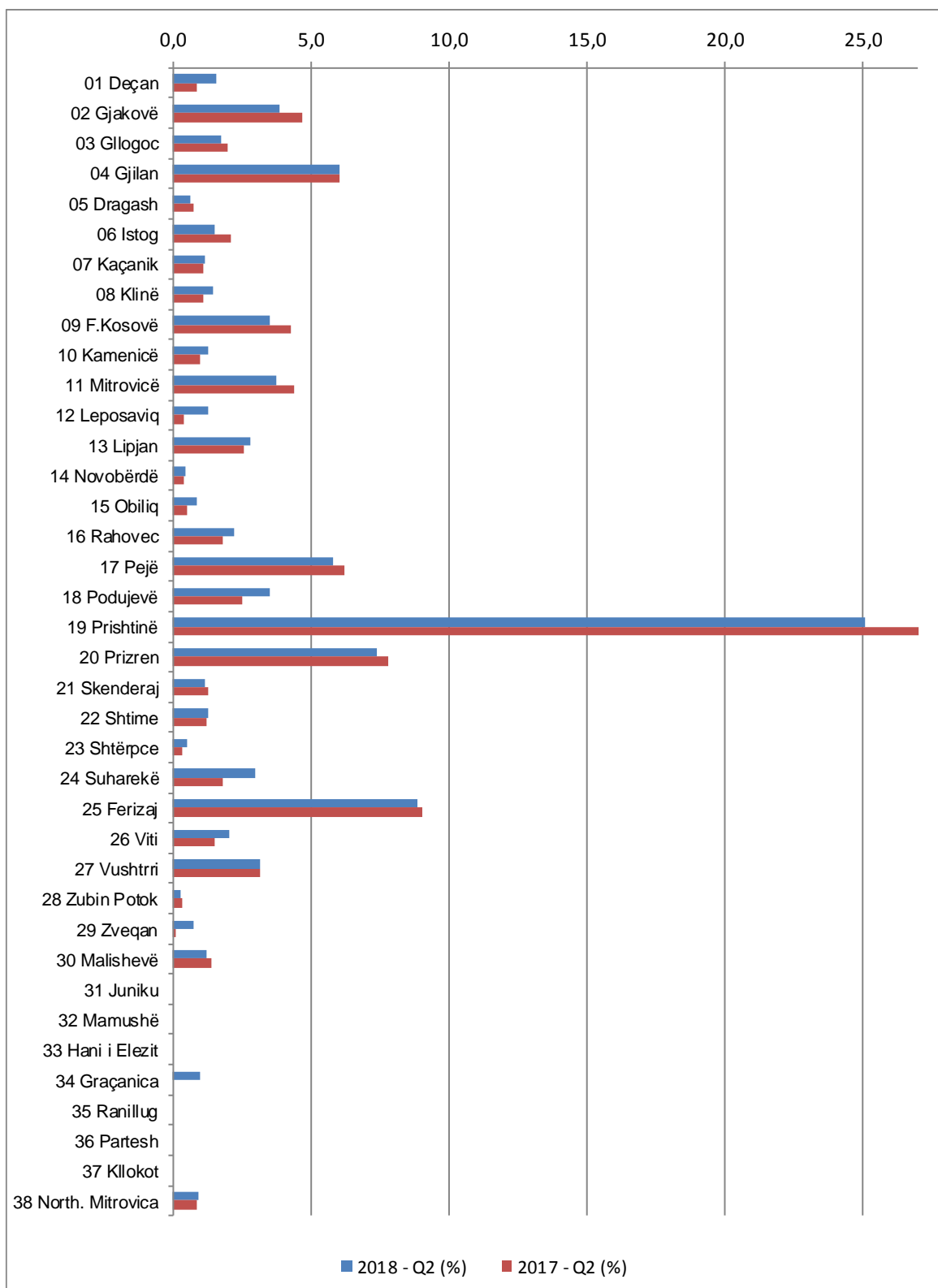


5 Number of registered enterprises according to municipality

Table 4. Number of registered enterprises according to municipality and sector of economic activity in Q2 2018

Municipality	Sector of economic activity																			
	Agriculture, forestry and fishing	Mining and quarrying	Manufacturing	Electricity, gas, steam and air conditioning supply	Water supply, sewage, waste management and remediation activities	Construction	Wholesale and retail trade, repair of motor vehicles and motorcycles	Transportation and storage	Accommodation and food service activities	Information and communication	Financial and insurance activities	Real estate activities	Professional, scientific and technical activities	Administrative and support service activities	Public administration and protection: compulsory social protection	Education	Human health and social work activities	Arts, entertainment and recreation	Other service activities	
Code and name	Total	A	B	C	D	E	F	G	H	I	J	K	L	M	N	O	P	Q	R	S
	2636	198	10	299	6	9	260	723	93	277	114	24	15	170	125	9	20	62	86	136
01 Deçan	41	6	-	7	-	-	6	11	-	5	1	-	-	-	1	-	-	-	2	2
02 Gjakovë	102	5	2	14	-	-	12	21	3	13	1	-	-	6	3	-	-	4	5	13
03 Glogoc	46	1	-	7	-	-	8	13	-	7	1	-	-	-	1	-	-	5	-	3
04 Gjilan	159	2	1	19	-	-	20	48	6	24	7	-	1	12	3	1	3	4	1	7
05 Dragash	16	2	-	3	-	-	3	5	1	-	1	1	-	-	-	-	-	-	-	-
06 Istog	40	13	-	3	-	-	5	9	1	3	1	-	-	1	2	-	-	-	-	1
07 Kaçanik	30	-	-	8	-	-	4	7	2	4	-	-	1	1	1	1	-	-	-	1
08 Klinë	38	5	1	6	-	-	5	14	-	1	1	-	-	-	1	-	-	2	-	2
09 F.Kosovë	92	3	-	7	-	1	13	16	5	9	2	1	1	10	9	-	2	3	5	5
10 Kamenicë	34	10	-	3	-	-	2	9	1	3	3	-	-	-	-	-	-	-	1	2
11 Mitrovicë	98	4	-	5	1	-	12	30	5	16	1	1	-	5	1	-	2	3	4	8
12 Leposaviq	33	9	-	11	-	-	3	3	-	-	1	-	-	2	-	-	-	-	-	4
13 Lipjan	74	2	-	5	-	-	14	20	4	13	2	-	-	4	3	-	-	2	3	2
14 Novobërdë	11	6	1	2	-	-	-	1	-	1	-	-	-	-	-	-	-	-	-	-
15 Obiliq	22	1	-	1	-	-	-	11	2	5	-	-	-	-	1	-	-	-	-	1
16 Rahovec	58	17	-	8	-	-	7	12	1	3	4	-	-	1	3	-	-	-	1	1
17 Pejë	153	11	1	19	1	-	11	41	6	20	1	-	1	9	6	-	1	5	5	15
18 Podujevë	92	19	-	9	-	-	3	25	4	13	2	-	-	5	4	-	-	1	-	7
19 Prishtinë	660	11	4	46	2	5	46	187	12	53	68	10	10	77	53	5	7	17	20	27
20 Prizren	194	12	-	27	-	-	12	70	5	25	4	1	-	11	9	-	2	-	7	9
21 Skenderaj	31	9	-	2	-	-	4	3	3	2	1	-	-	-	3	-	-	1	1	2
22 Shtime	34	5	-	5	-	-	8	4	1	5	1	1	-	1	-	-	-	-	2	1
23 Shtërpçe	13	2	-	1	-	-	-	6	-	-	1	-	1	-	1	-	-	-	-	1
24 Suharekë	78	5	-	13	1	-	6	20	6	10	-	2	-	7	1	-	-	3	2	2
25 Ferizaj	233	7	-	30	1	-	30	71	9	22	7	3	-	5	11	2	1	5	20	9
26 Viti	53	9	-	12	-	-	9	8	1	5	-	2	-	1	1	-	2	2	-	1
27 Vushtrri	83	7	-	15	-	1	6	25	4	9	-	-	-	4	4	-	-	1	3	4
28 Zubin Potok	7	3	-	1	-	-	1	1	1	-	-	-	-	-	-	-	-	-	-	-
29 Zveçan	19	2	-	5	-	1	3	4	-	-	1	-	-	1	-	-	-	-	-	2
30 Malishevë	32	5	-	1	-	1	3	10	2	1	-	-	-	1	2	-	-	3	1	2
31 Juniku	-	-	-	-	-	-	-	-	-	-	-	-	-	-	-	-	-	-	-	-
32 Mamushë	-	-	-	-	-	-	-	-	-	-	-	-	-	-	-	-	-	-	-	-
33 Hani i Elezit	9	3	-	-	-	-	1	-	1	2	-	-	-	1	-	-	-	-	1	-
34 Graçanica	26	-	-	-	-	-	1	13	4	3	-	1	-	4	-	-	-	-	-	-
35 Ranillug	1	-	-	-	-	-	-	-	-	-	-	1	-	-	-	-	-	-	-	-
36 Partesh	-	-	-	-	-	-	-	-	-	-	-	-	-	-	-	-	-	-	-	-
37 Klllokot	-	-	-	-	-	-	-	-	-	-	-	-	-	-	-	-	-	-	-	-
38 North. Mitrovica	24	2	-	4	-	-	2	5	3	-	2	-	-	1	1	-	-	1	-	3

Graph 7. Structure of registered enterprises according to municipality, Q2 2018



6 Registered individual and non-individual enterprises

Table 5. Number of registered individual enterprises according to municipality and sector of economic activity in Q2 2018

Municipality	Sector of economic activity																				
	Agriculture, forestry and fishing	Mining and quarrying	Manufacturing	Electricity, gas, steam and air conditioning supply	Water supply, sewage, waste management and remediation activities	Construction	Wholesale and retail trade, repair of motor vehicles and motorcycles	Transportation and storage	Accommodation and food service activities	Information and communication	Financial and insurance activities	Real estate activities	Professional, scientific and technical activities	Administrative and support service activities	Public administration and protection: compulsory social protection	Education	Human health and social work activities	Arts, entertainment and recreation	Other service activities		
Code and name	Total	A	B	C	D	E	F	G	H	I	J	K	L	M	N	O	P	Q	R	S	
	1228	174	1	146	1	3	86	322	57	121	28	6	4	50	34	1	3	27	52	112	
01 Deçan	35	5	-	6	-	-	4	10	-	5	1	-	-	-	-	-	-	-	-	2	2
02 Gjakovë	66	3	1	10	-	-	7	13	2	7	1	-	-	5	1	-	-	1	3	12	3
03 Glogoc	26	1	-	2	-	-	4	7	-	4	1	-	-	-	1	-	-	3	-	3	3
04 Gjilan	51	1	-	5	-	-	5	13	6	5	5	-	-	1	-	-	1	3	-	6	6
05 Dragash	13	2	-	3	-	-	2	3	1	-	1	1	-	-	-	-	-	-	-	-	-
06 Istog	24	12	-	1	-	-	2	3	1	3	-	-	-	1	-	-	-	-	-	-	1
07 Kaçanik	11	-	-	3	-	-	1	4	1	-	-	-	1	-	1	-	-	-	-	-	-
08 Klinë	17	5	-	2	-	-	-	8	-	1	-	-	-	-	-	-	-	-	-	-	1
09 F.Kosovë	29	3	-	1	-	-	3	2	3	2	-	-	1	5	1	-	-	3	3	2	2
10 Kamenicë	24	8	-	1	-	-	-	7	1	2	3	-	-	-	-	-	-	-	-	-	2
11 Mitrovicë	59	4	-	5	-	-	4	19	3	6	-	-	-	3	-	-	1	2	4	8	8
12 Leposaviq	29	8	-	10	-	-	3	2	-	-	-	-	-	2	-	-	-	-	-	-	4
13 Lipjan	31	2	-	2	-	-	4	10	2	2	1	-	-	3	1	-	-	-	-	2	2
14 Novobërdë	7	5	-	2	-	-	-	-	-	-	-	-	-	-	-	-	-	-	-	-	-
15 Obiliq	13	1	-	-	-	-	-	7	2	1	-	-	-	-	1	-	-	-	-	-	1
16 Rahovec	42	17	-	3	-	-	3	10	1	2	3	-	-	-	1	-	-	-	-	1	1
17 Pejë	81	9	-	8	1	-	3	18	5	14	-	-	-	3	3	-	-	3	1	13	13
18 Podujevë	65	16	-	7	-	-	1	20	1	9	1	-	-	2	-	-	-	1	-	7	7
19 Prishtinë	119	6	-	9	-	-	3	38	5	5	8	1	2	11	8	-	-	3	6	14	14
20 Prizren	115	11	-	14	-	-	6	39	3	19	1	-	-	3	5	-	-	-	5	9	9
21 Skenderaj	21	9	-	2	-	-	1	2	2	1	-	-	-	-	2	-	-	-	-	2	2
22 Shtime	20	5	-	4	-	-	5	-	-	3	-	-	-	1	-	-	-	-	1	1	1
23 Shtërpce	11	2	-	1	-	-	-	5	-	-	1	-	-	-	1	-	-	-	-	1	1
24 Suharekë	45	3	-	8	-	-	3	11	2	8	-	2	-	2	-	-	-	2	2	2	2
25 Ferizaj	114	6	-	13	-	-	10	36	5	10	-	-	-	2	4	1	-	3	18	6	6
26 Viti	28	9	-	5	-	-	1	4	-	3	-	1	-	1	1	-	1	1	-	1	1
27 Vushtrri	54	7	-	9	-	1	5	13	4	5	-	-	-	1	1	-	-	1	3	4	4
28 Zubin Potok	6	3	-	1	-	-	-	1	1	-	-	-	-	-	-	-	-	-	-	-	-
29 Zveçan	15	2	-	5	-	1	3	1	-	-	-	-	-	1	-	-	-	-	-	2	2
30 Malishevë	17	5	-	-	-	1	2	2	1	1	-	-	-	-	1	-	-	1	1	2	2
31 Juniku	0	-	-	-	-	-	-	-	-	-	-	-	-	-	-	-	-	-	-	-	-
32 Mamushë	0	-	-	-	-	-	-	-	-	-	-	-	-	-	-	-	-	-	-	-	-
33 Hani i Elezit	4	2	-	-	-	-	-	-	-	1	-	-	-	1	-	-	-	-	-	-	-
34 Graçanicë	15	-	-	-	-	-	1	9	2	2	-	-	-	1	-	-	-	-	-	-	-
35 Ranillug	1	-	-	-	-	-	-	-	-	-	-	1	-	-	-	-	-	-	-	-	-
36 Partesh	-	-	-	-	-	-	-	-	-	-	-	-	-	-	-	-	-	-	-	-	-
37 Kllokot	-	-	-	-	-	-	-	-	-	-	-	-	-	-	-	-	-	-	-	-	-
38 North. Mitrovicë	20	2	-	4	-	-	-	5	3	-	1	-	-	1	1	-	-	-	-	3	3

Table 6. Number of registered non-individual enterprises according to municipality and sector of economic activity in Q2 2018

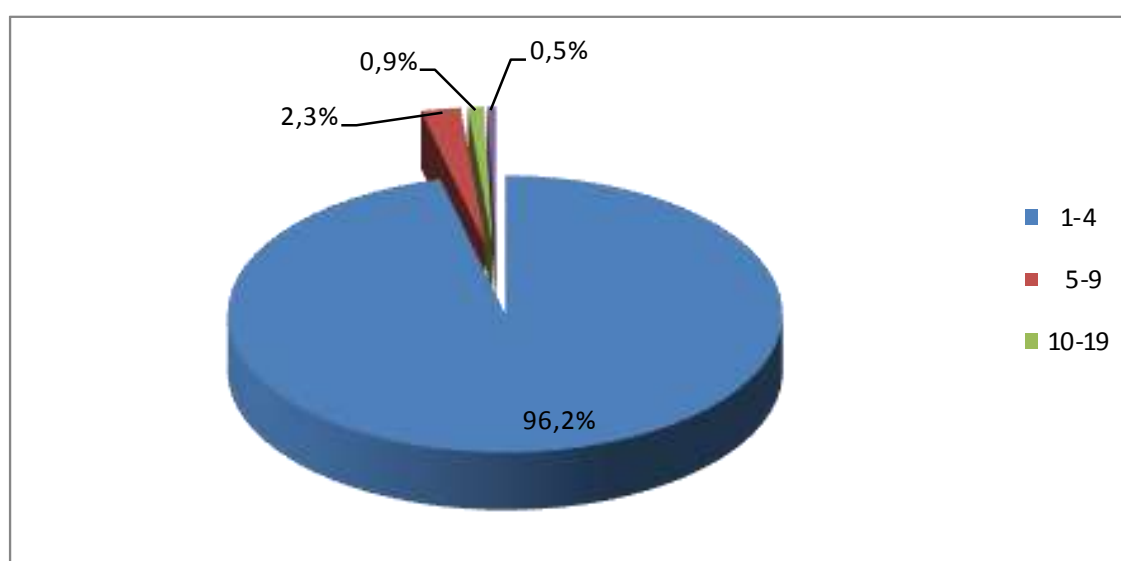
Municipality	Sector of economic activity																			
	Agriculture, forestry and fishing	Mining and quarrying	Manufacturing	Electricity, gas, steam and air conditioning supply	Water supply, sewage, waste management and remediation activities	Construction	Wholesale and retail trade, repair of motor vehicles and motorcycles	Transportation and storage	Accommodation and food service activities	Information and communication	Financial and insurance activities	Real estate activities	Professional, scientific and technical activities	Administrative and support service activities	Public administration and protection: compulsory social protection	Education	Human health and social work activities	Arts, entertainment and recreation	Other service activities	
Code and name	Total	A	B	C	D	E	F	G	H	I	J	K	L	M	N	O	P	Q	R	S
	1408	24	9	153	5	6	174	401	36	156	86	18	11	120	91	8	17	35	34	24
01 Deçan	6	1	-	1	-	-	2	1	-	-	-	-	-	-	1	-	-	-	-	-
02 Gjakovë	36	2	1	4	-	-	5	8	1	6	-	-	-	1	2	-	-	3	2	1
03 Gllgoc	20	-	-	5	-	-	4	6	-	3	-	-	-	-	-	-	-	2	-	-
04 Gjilan	108	1	1	14	-	-	15	35	-	19	2	-	1	11	3	1	2	1	1	1
05 Dragash	3	-	-	-	-	-	1	2	-	-	-	-	-	-	-	-	-	-	-	-
06 Istog	16	1	-	2	-	-	3	6	-	-	1	-	-	-	2	-	-	-	-	-
07 Kaçanik	19	-	-	5	-	-	3	3	1	4	-	-	-	1	-	1	-	-	1	-
08 Klinë	21	-	1	4	-	-	5	6	-	-	1	-	-	-	1	-	-	2	-	1
09 F.Kosovë	63	-	-	6	-	1	10	14	2	7	2	1	-	5	8	-	2	-	2	3
10 Kamenicë	10	2	-	2	-	-	2	2	-	1	-	-	-	-	-	-	-	-	1	-
11 Mitrovicë	39	-	-	-	1	-	8	11	2	10	1	1	-	2	1	-	1	1	-	-
12 Leposaviq	4	1	-	1	-	-	-	1	-	-	1	-	-	-	-	-	-	-	-	-
13 Lipjan	43	-	-	3	-	-	10	10	2	11	1	-	-	1	2	-	-	2	1	-
14 Novobërdë	4	1	1	-	-	-	-	1	-	1	-	-	-	-	-	-	-	-	-	-
15 Obiliq	9	-	-	1	-	-	-	4	-	4	-	-	-	-	-	-	-	-	-	-
16 Rahovec	16	-	-	5	-	-	4	2	-	1	1	-	-	1	2	-	-	-	-	-
17 Pejë	72	2	1	11	-	-	8	23	1	6	1	-	1	6	3	-	1	2	4	2
18 Podujevë	27	3	-	2	-	-	2	5	3	4	1	-	-	3	4	-	-	-	-	-
19 Prishtinë	541	5	4	37	2	5	43	149	7	48	60	9	8	66	45	5	7	14	14	13
20 Prizren	79	1	-	13	-	-	6	31	2	6	3	1	-	8	4	-	2	-	2	-
21 Skenderaj	10	-	-	-	-	-	3	1	1	1	1	-	-	-	1	-	-	1	1	-
22 Shtime	14	-	-	1	-	-	3	4	1	2	1	1	-	-	-	-	-	-	1	-
23 Shtërpce	2	-	-	-	-	-	-	1	-	-	-	-	1	-	-	-	-	-	-	-
24 Suharekë	33	2	-	5	1	-	3	9	4	2	-	-	-	5	1	-	-	1	-	-
25 Ferizaj	119	1	-	17	1	-	20	35	4	12	7	3	-	3	7	1	1	2	2	3
26 Viti	25	-	-	7	-	-	8	4	1	2	-	1	-	-	-	-	1	1	-	-
27 Vushtrri	29	-	-	6	-	-	1	12	-	4	-	-	-	3	3	-	-	-	-	-
28 Zubin Potok	1	-	-	-	-	-	1	-	-	-	-	-	-	-	-	-	-	-	-	-
29 Zveçan	4	-	-	-	-	-	-	3	-	-	1	-	-	-	-	-	-	-	-	-
30 Malishevë	15	-	-	1	-	-	1	8	1	-	-	-	-	1	1	-	-	2	-	-
31 Juniku	-	-	-	-	-	-	-	-	-	-	-	-	-	-	-	-	-	-	-	-
32 Mamushë	-	-	-	-	-	-	-	-	-	-	-	-	-	-	-	-	-	-	-	-
33 Hani i Elezit	5	1	-	-	-	-	1	-	1	1	-	-	-	-	-	-	-	-	1	-
34 Graçanicë	11	-	-	-	-	-	-	4	2	1	-	1	-	3	-	-	-	-	-	-
35 Ranillug	-	-	-	-	-	-	-	-	-	-	-	-	-	-	-	-	-	-	-	-
36 Partesh	-	-	-	-	-	-	-	-	-	-	-	-	-	-	-	-	-	-	-	-
37 Kllokot	-	-	-	-	-	-	-	-	-	-	-	-	-	-	-	-	-	-	-	-
38 North. Mitrovicë	4	-	-	-	-	-	2	-	-	-	1	-	-	-	-	-	-	1	-	-

7 Registered enterprises according to sector of economic activity and number of employees

Table 7. Number of registered enterprises according to sector of economic activity and number of employees in Q2 2018

Sector of economic activity	Total	Category of number of employees				
		1-4	5-9	10-19	20-249	250 +
Total	2636	2537	61	25	13	-
<i>A</i> Agriculture, forestry and fishing	198	198	-	-	-	-
<i>B</i> Mining and quarrying	10	10	-	-	-	-
<i>C</i> Manufacturing	299	277	15	5	2	-
<i>D</i> Electricity, gas, steam and air conditioning supply	6	5	1	-	-	-
<i>E</i> Water supply, sewage, waste management and remediation activities	9	9	-	-	-	-
<i>F</i> Construction	260	242	11	5	2	-
<i>G</i> Wholesale and retail trade, repair of motor vehicles and motorcycles	723	706	9	6	2	-
<i>H</i> Transport and storage	93	93	-	-	-	-
<i>I</i> Accommodation and food service activities	277	259	13	2	3	-
<i>J</i> Information and communication	114	106	3	2	3	-
<i>K</i> Financial and insurance activities	24	24	-	-	-	-
<i>L</i> Real estate activities	15	15	-	-	-	-
<i>M</i> Professional, scientific and technical activities	170	164	3	3	-	-
<i>N</i> Administrative and support service activities	125	121	3	1	-	-
<i>O</i> Public administration and defense	9	9	-	-	-	-
<i>P</i> Education	20	20	-	-	-	-
<i>Q</i> Human health and social work activities	62	62	-	-	-	-
<i>R</i> Arts, entertainment and recreation	86	81	3	1	1	-
<i>S</i> Other service activities	136	136	-	-	-	-

Graph 8. Structure of registered enterprises according to category of number of employees in Q2 2018

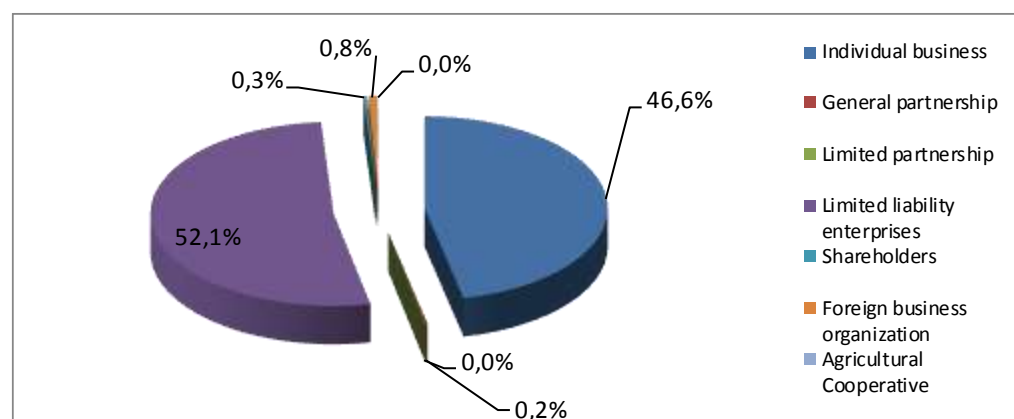


8 Registered enterprises according to legal form

Table 8. Number of registered enterprises according to sector of economic activity and legal form of organization in Q2 2018

Sector of economic activity	Legal form and organization										
	Total	Individual business	General partnership	Limited partnership	Limited liability enterprises	Shareholders	Foreign business organization	Socially owned enterprises	Public enterprises	Agricultural Cooperatives	Other companies under the jurisdiction of KTA
Total	2636	1228	4	1	1374	7	21	-	-	1	-
A Agriculture, forestry and fishing	198	174	-	-	23	-	-	-	-	1	-
B Mining and quarrying	10	1	-	-	9	-	-	-	-	-	-
C Manufacturing	299	146	-	-	148	2	3	-	-	-	-
D Electricity, gas, steam and air conditioning supply	6	1	-	-	4	1	-	-	-	-	-
E Water supply, sewage, waste management and remediation activities	9	3	-	-	4	1	1	-	-	-	-
F Construction	260	86	-	-	169	1	4	-	-	-	-
G Wholesale and retail trade, repair of motor vehicles and motorcycles	723	322	2	1	393	1	4	-	-	-	-
H Transport and storage	93	57	-	-	36	-	-	-	-	-	-
I Accommodation and food service activities	277	121	1	-	154	-	1	-	-	-	-
J Information and communication	114	28	1	-	83	-	2	-	-	-	-
K Financial and insurance activities	24	6	-	-	17	-	1	-	-	-	-
L Real estate activities	15	4	-	-	11	-	-	-	-	-	-
M Professional, scientific and technical activities	170	50	-	-	116	-	4	-	-	-	-
N Administrative and support service activities	125	34	-	-	91	-	-	-	-	-	-
O Public administration and defense	9	1	-	-	8	-	-	-	-	-	-
P Education	20	3	-	-	17	-	-	-	-	-	-
Q Human health and social work activities	62	27	-	-	35	-	-	-	-	-	-
R Arts, entertainment and recreation	86	52	-	-	32	1	1	-	-	-	-

Graph 9. Registered enterprises according to legal form of organization in Q2 2018

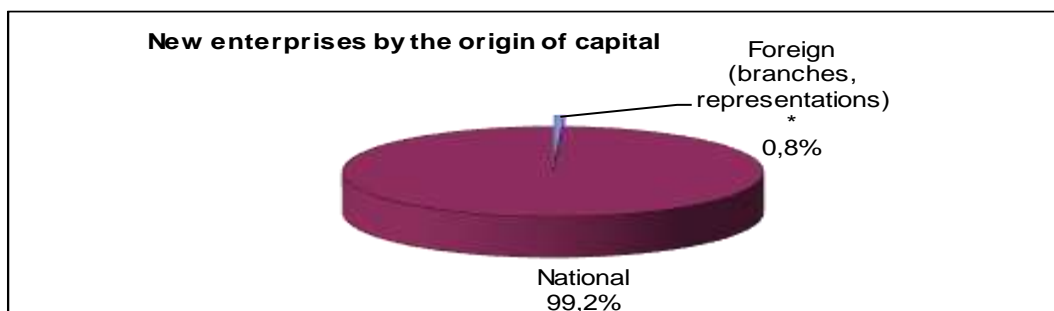


9 Registered enterprises according to origin of capital

Table 9. Number of registered enterprises according to origin of capital in Q2 2018

Category of number of employees	Total		Foreign (branches, representation)		National	
	2636	100%	21	76,2%	2615	100%
1-4	2537	96,2%	16	76,2%	2521	96,4%
5-9	61	2,3%	3	-	58	2,2%
10-19	27	1,0%	2	-	25	1,0%
20-249	11	0,4%	-	-	11	0,4%
250+	-	-	-	-	-	-

Graph 10. Structure of registered enterprises according to origin of capital in Q2 2018

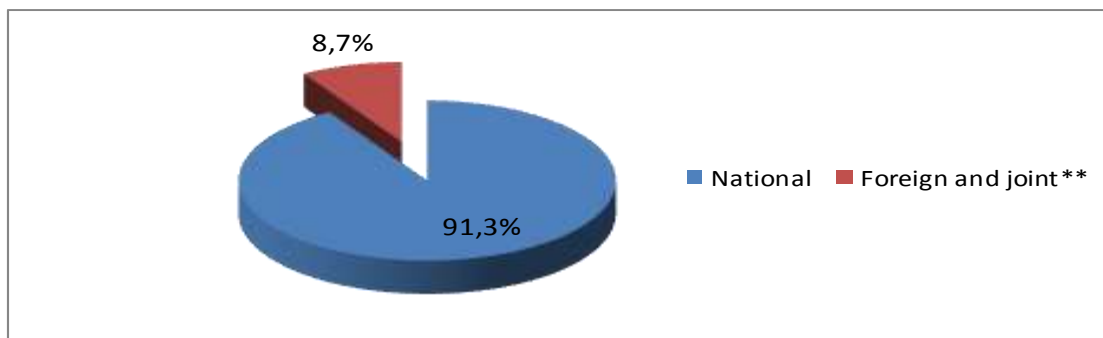


Note: The sign "*" indicates that we are dealing only with foreign businesses defined in page 8 (Foreign businesses as defined by KBRA).

Table 10. Number of registered enterprises according to type of ownership in Q2 2018

Total	National	Foreign and joint**		
		Total	Joint (Local + Foreign)	Foreign (Branches, representations)*
2.636	2.407	229	208	21

Graph 11. Structure of registered enterprises according to type of ownership in Q2 2018



Note: The sign "***" in Table 11 and Graph 10 shows that we are dealing with a broader concept of definition of the origin of capital or ownership (registered enterprises with foreign and joint ownership)

10 Terminated enterprises

Table 11. Number of terminated enterprises according to municipality and sector of economic activity in Q2 2018

Municipality	Section of economic activity																			
	Agriculture, forestry and fishing	Mining and quarrying	Manufacturing	Electricity, gas, steam and air conditioning supply	Water supply, sewage, waste management and remediation activities	Construction	Wholesale and retail trade, repair of motor vehicles and motorcycles	Transportation and storage	Accommodation and food service activities	Information and communication	Financial and insurance activities	Real estate activities	Professional, scientific and technical activities	Administrative and support service activities	Public administration and protection: compulsory social protection	Education	Human health and social work activities	Arts, entertainment and recreation	Other service activities	
	Total	A	B	C	D	E	F	G	H	I	J	K	L	M	N	O	P	Q	R	S
	407	27	-	34	-	1	15	132	43	57	18	6	1	24	9	-	1	8	10	21
01 Deçan	3	-	-	-	-	-	-	2	-	1	-	-	-	-	-	-	-	-	-	-
02 Gjakovë	34	2	-	3	-	-	1	15	1	6	-	-	-	1	-	-	-	1	-	4
03 Glogoc	10	3	-	1	-	-	-	1	1	2	1	-	-	-	-	-	-	-	-	1
04 Gjilan	20	-	-	-	-	-	1	6	2	6	-	-	-	3	1	-	-	-	1	-
05 Dragash	6	-	-	1	-	-	-	2	1	1	-	-	-	-	-	-	-	1	-	-
06 Istog	6	-	-	-	-	-	-	4	1	1	-	-	-	-	-	-	-	-	-	-
07 Kaçanik	4	1	-	-	-	-	-	1	1	-	-	-	-	-	1	-	-	-	-	-
08 Klinë	12	4	-	-	-	-	1	3	1	2	-	-	-	-	-	-	-	-	1	-
09 F.Kosovë	17	-	-	1	-	-	1	2	4	7	-	-	-	-	-	-	-	1	-	1
10 Kamenicë	7	1	-	1	-	-	-	3	-	1	-	-	-	-	-	-	-	-	-	1
11 Mitrovicë	32	-	-	4	-	-	1	10	6	1	2	-	-	1	1	-	-	1	3	2
12 Leposaviq	1	-	-	1	-	-	-	-	-	-	-	-	-	-	-	-	-	-	-	-
13 Lipjan	8	1	-	-	-	-	1	2	1	1	-	-	-	1	-	-	-	-	-	1
14 Novobërdë	0	-	-	-	-	-	-	-	-	-	-	-	-	-	-	-	-	-	-	-
15 Obiliq	7	1	-	1	-	-	-	3	1	1	-	-	-	-	-	-	-	-	-	-
16 Rahovec	11	2	-	1	-	-	2	4	-	1	1	-	-	-	-	-	-	-	-	-
17 Pejë	16	3	-	5	-	-	-	2	-	4	-	-	-	-	1	-	-	-	-	1
18 Podujevë	11	1	-	2	-	-	2	4	-	2	-	-	-	-	-	-	-	-	-	-
19 Prishtinë	77	1	-	3	-	-	1	28	1	7	7	4	1	10	3	-	1	3	3	4
20 Prizren	31	2	-	3	-	-	-	13	1	2	3	-	-	3	-	-	-	-	1	3
21 Skenderaj	7	1	-	-	-	-	1	1	1	3	-	-	-	-	-	-	-	-	-	-
22 Shtime	3	-	-	-	-	-	-	1	-	1	1	-	-	-	-	-	-	-	-	-
23 Shtërpce	3	2	-	1	-	-	-	-	-	-	-	-	-	-	-	-	-	-	-	-
24 Suharekë	14	-	-	3	-	-	-	6	-	-	2	1	-	1	1	-	-	-	-	-
25 Ferizaj	27	-	-	-	-	1	2	6	11	3	1	1	-	1	-	-	-	-	-	1
26 Viti	14	-	-	2	-	-	-	5	4	1	-	-	-	1	-	-	-	-	-	1
27 Vushtrri	11	1	-	-	-	-	1	5	2	1	-	-	-	1	-	-	-	-	-	-
28 Zubin Potok	2	1	-	-	-	-	-	-	-	-	-	-	-	-	-	-	-	1	-	-
29 Zveqan	-	-	-	-	-	-	-	-	-	-	-	-	-	-	-	-	-	-	-	-
30 Malishevë	7	-	-	1	-	-	-	2	1	1	-	-	-	1	-	-	-	-	-	1
31 Juniku	-	-	-	-	-	-	-	-	-	-	-	-	-	-	-	-	-	-	-	-
32 Mamushë	-	-	-	-	-	-	-	-	-	-	-	-	-	-	-	-	-	-	-	-
33 Hani i Elezit	2	-	-	-	-	-	-	-	2	-	-	-	-	-	-	-	-	-	-	-
34 Graçanica	2	-	-	-	-	-	-	1	-	1	-	-	-	-	-	-	-	-	-	-
35 Ranillug	-	-	-	-	-	-	-	-	-	-	-	-	-	-	-	-	-	-	-	-
36 Partesh	-	-	-	-	-	-	-	-	-	-	-	-	-	-	-	-	-	-	-	-
37 Killokot	-	-	-	-	-	-	-	-	-	-	-	-	-	-	-	-	-	-	-	-
38 North. Mitrovica	2	-	-	-	-	-	-	-	-	-	-	-	-	1	-	-	-	-	1	-

Kosovo Agency of Statistics

short description

Kosovo Agency of Statistics is a professional institution which deals with collection, processing and publication of official statistical data. As such acts since 1948 and has passed through several historical stages, structured according to state regulation of those times.

On 2 August 1999, the Agency has resumed his professional work (after nine years of interruption of all statistical series detrimental to the interest of Kosovo), as an independent institution under the Ministry of Public Administration. Since 12.12.2011 the Agency operates in the frames of the Prime Minister's Office. Office is funded by the Kosovo Consolidated Budget, but also by donors for specific projects and for technical professional support.

Kosovo Agency of Statistics acts according to the Law No. 04/L-036 which entered into force on 12.12.2011. Programme of Official Statistics 2013/2017 is in implementation for the development of statistical system in correlation with the European Union statistics (EUROSTAT).

Kosovo Agency of Statistics has this organizational structure: production departments; (Department of Economic statistics and National Accounts, Department of Agriculture and Environment statistics and Department of Social statistics. **Support Departments;** Department of Methodology and Information Technology, Department of Policy Planning, Coordination and Communication, Department of Census and survey and Department of Administration. **Within the Agency are also established Regional Offices;** Gjakove, Gjilan, Mitrovica, Peja, Prizren, Pristina and Ferizaj

In KAS are employed in total 147 workers, of whom 100 (68,0 %) at the headquarters of the Agency, while in the Regional Offices, 47 (32,0%). Agency's educational qualifying structure is as follows: 73,5% with university education, 13,6% with with non-tertiary education, and 12.9% with secondary education.

We have professional and technical cooperation with all Ministries of the Government of Kosovo, especially with the Ministry of Economy and Finance, Central Bank of Kosovo, with international institutions, EUROSTAT, International Monetary Fund, World Bank, Sweden's SIDA, DFID, UNFPA, UNDP, UNVEF, and with the statistical institutions of the countries in the region.

Kosovo Agency of Statistics almost completely covers the territory of Kosovo, based on the statistical structure of the enumeration areas as the basic unit and sole in the country from which it gets first hand information. All surveys conducted in the field use the extension of the samples in these enumeration areas but also a statistical methodology according to international recommendations. During the collection of statistical data and reports from reporting entities are involved professionals, technicians, administrators, servants of the country offices, field enumerators from regional offices, etc.

In 2011, the project of Population Census , Households and Dwellings was successfully implemented, and in 2014 was successfully carried out the Agriculture Census. The result obtained from these censuses will have an important role in the development policies.

The mission of the Agency; to meet the needs of users with qualitative statistical data, objective, in time and space so that users have reliable base to conduct regular analysis in the interest of planning and project development at the municipal and country level. To support government institutions, scientific institutes, research academies, businesses in order to provide proper information for decision-makers and other users in Kosovo.

- **Address: KOSOVO AGENCY OF STATISTICS**
Street. "Zenel Salihu", No. 4, 10000 Pristina
- **Telephone:** +383 (0) 38 200 31 129
CEO: +383 (0) 38 200 31 112
- **Fax::** +383 (0) 38 235 033
- **E-mail:** infoask@rks-gov.net
- **Web:** <http://ask.rks-gov.net>