

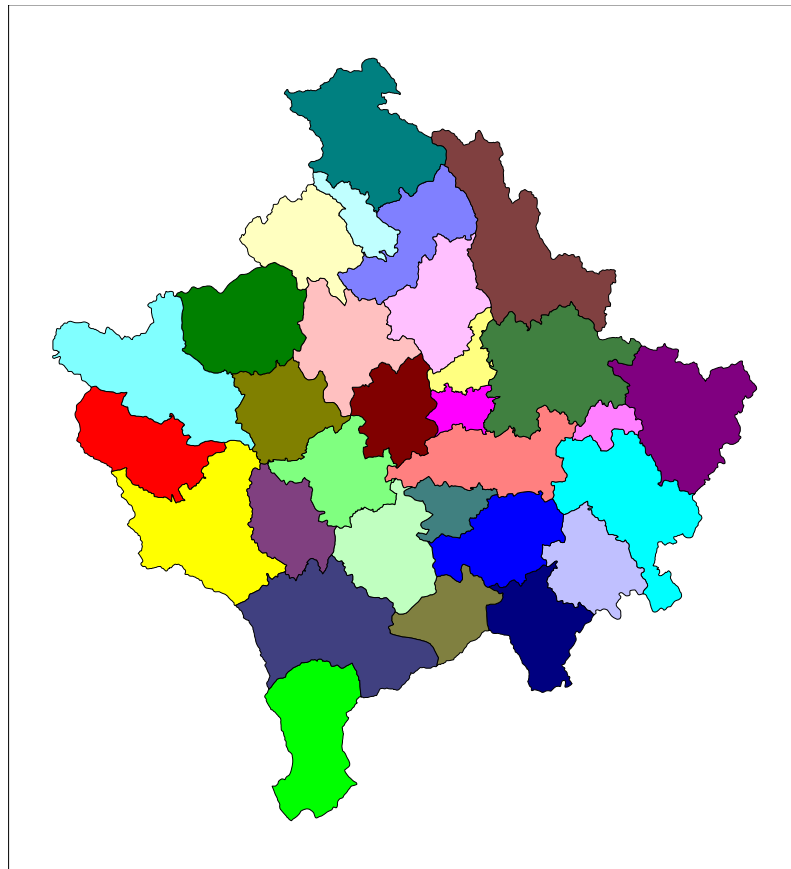


Republika e Kosovës
Republika Kosova-Republic of Kosovo
Qeveria - Vlada - Government

Ministria e Shërbimeve Publike - Ministarstva Javnih Sluzbi - Ministry of Public Services

Series 2: Agriculture and Environment Statistics

Output Price Index and Prices in Agriculture (October – December 2008)



Enti i Statistikës së Kosovës
Zavod za Statistiku Kosova
Statistical Office of Kosovo

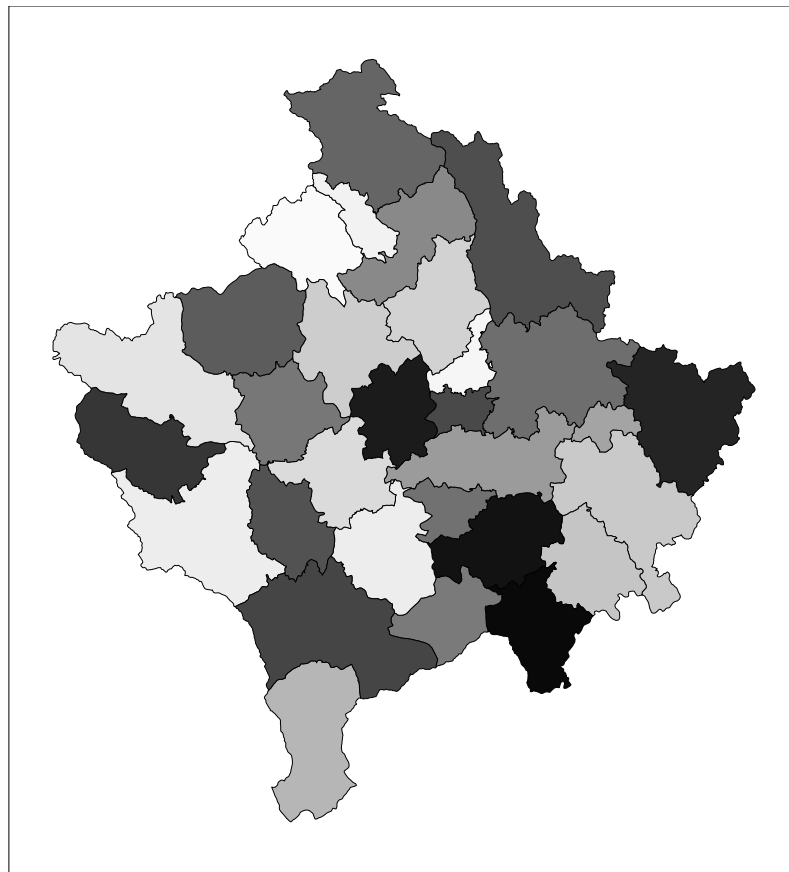


Republika e Kosovës
Republika Kosova-Republic of Kosovo
Qeveria - Vlada - Government

Ministria e Shërbimeve Publike - Ministarstva Javnih Sluzbi - Ministry of Public Services

Series 2: Agriculture and Environment Statistics

Output Price Index and Prices in Agriculture (October – December 2008)



Enti i Statistikës së Kosovës
Zavod za Statistiku Kosova
Statistical Office of Kosovo

Publisher: Statistical Office of Kosovo (SOK)
Publication date: February 2009
© Statistical Office of Kosovo
Reproduction is authorized when source is indicated only
Printed by the K.G.T, Pristina, Kosovo

More information is available on Internet
www.ks-gov.net/esk

P r e f a c e

Agriculture and Environment Statistics Department started to collect data on prices for agriculture products in November 2003. In the beginning, prices were collected for a limited number of items. At the moment prices for 64 different items concerning agricultural output are collected. The plan for the future is to both increase the number of products and also to complement it with an Input Price Index.

This is the ninth publication on Output Price Index and Average Absolute Prices for agriculture products produced by Statistical Office of Kosovo (SOK). In this publication, Output Price Index and prices for some major agriculture products are presented.

SOK is grateful to the Swedish International Development Cooperation Agency (SIDA) for their support of build up the agro monetary statistics system. SOK also is grateful for their corporation of all co-workers at the regional offices, other respondents of data collection as: agriculture farms, industrial and trade enterprises etc.

Especially grateful to Swedish price statistics experts Mr. Tomas Eriksson, Mr. Daniel Persson and Statistics Sweden Long-term consultant Mrs. Milva Ekonomi and others who directly or indirectly assisted on finalization of this publication.

This publication was prepared by following personnel from Agriculture and Environment Statistics Department at SOK.

Bajrush Qevani - Director of Department,
Haki Kurti – Chief of Division,
Violeta Arifi – Gashi – Chief of Section,
Kademsha – Bajramaga –Senior Officer
Design: Ahmet Cakolli.

Tel: +381 (0) 38 235 111, ext 264
E- mail: agriculture@ks-gov.net
Web-site: www.ks-gov.net/esk

Suggestions, proposals and remarks for this publication are welcome and will help us to have more effective publications for users.

February 2009

Chief Executive in SOK
Avni Kastrati

Abbreviations and Acronyms

SOK	Statistical Office of Kosovo
MPS	Ministry of Public Services
EAA	Economic Accounts for Agriculture
API	Agriculture Price Index
EU	European Union
SIDA	Swedish International Development Cooperation Agency

Key to symbols

- Zero
- : Data not available
- .
- 0 Magnitude less than half of unit
- ‰ Promile

C o n t e n t s

	Page
Output price index for agriculture products, October – December 2008.....	5
Changes in output price index, percent.....	8
Absolute average price in euro for some major agriculture products.....	9
Changes in absolute average prices.....	12
Methodology.....	13
Questionnaire.....	14

Output Price Index for agriculture products

The publication includes data from October to December 2008. This publication is based on collection of prices for domestic products in Kosovo. The price collection was carried out at markets, farms and other places where prices on agriculture products are available.

The products which make up the base for the Output Price Index are divided into two main groups: Crop- and Animal Output. Within Crop Output, prices are collected under the following groups; Cereals, Industrial crops, Forage plants, Vegetables, Potatoes and Fruits. Within Animal Output, prices are collected for Animals and Animal Product. For Animals prices are collected for four categories; Cattle, Sheep, Pigs and Poultry. These prices are based on the live weight of the animals. Within animal products prices are collected for Milk, Eggs and Honey. All prices are calculated in Euro and the measurement unit is in kg, liter and piece.

Figure 1, 2 and 3 shows monthly Output Price Index from January -December 2005/2006/2007 and 2008 for Total Output as well as for Crop- and Animal Output (November 2003 = 100).

In 2008 the index for the fourth quarter has increased with 19.2 % for Animal Output compared to the same period 2007. The index for Crop Output has decreased with -15.7 % between the fourth quarter 2007 and 2008. Total Output Index has also decreased during the period with -10.1 %.

Figure 1: Monthly Output Price Index for Crop Output for 2005/2006/2007 and 2008, (Nov.2003=100)

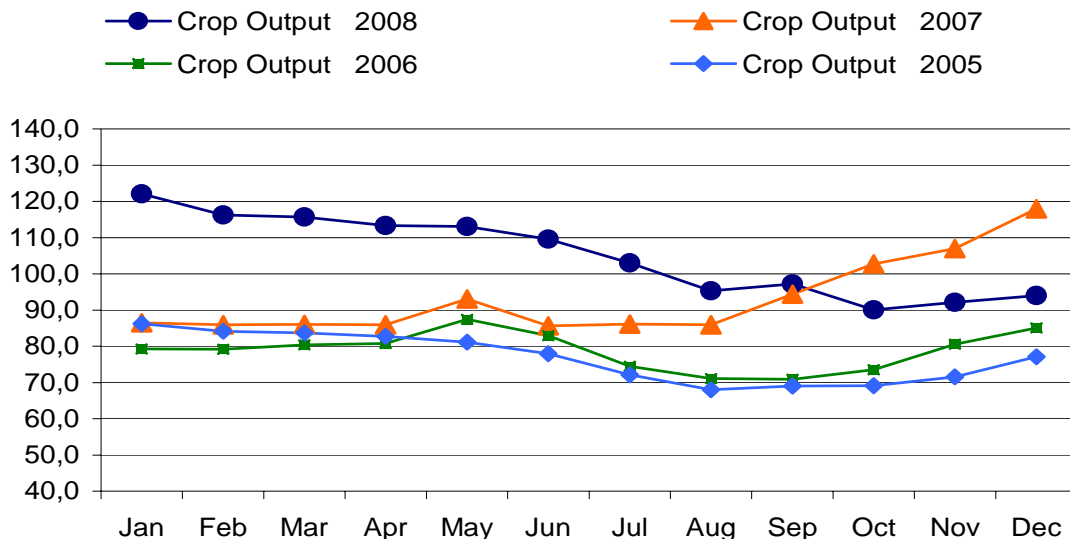


Figure 2: Monthly Output Price Index for Animal Output for 2005/2006/2007 and 2008, (Nov.2003=100)

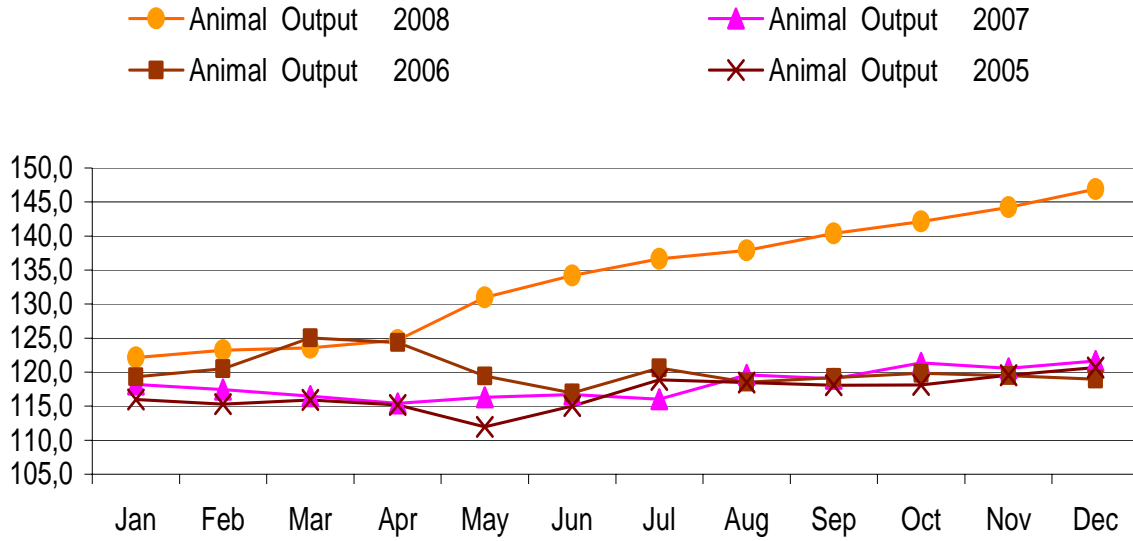
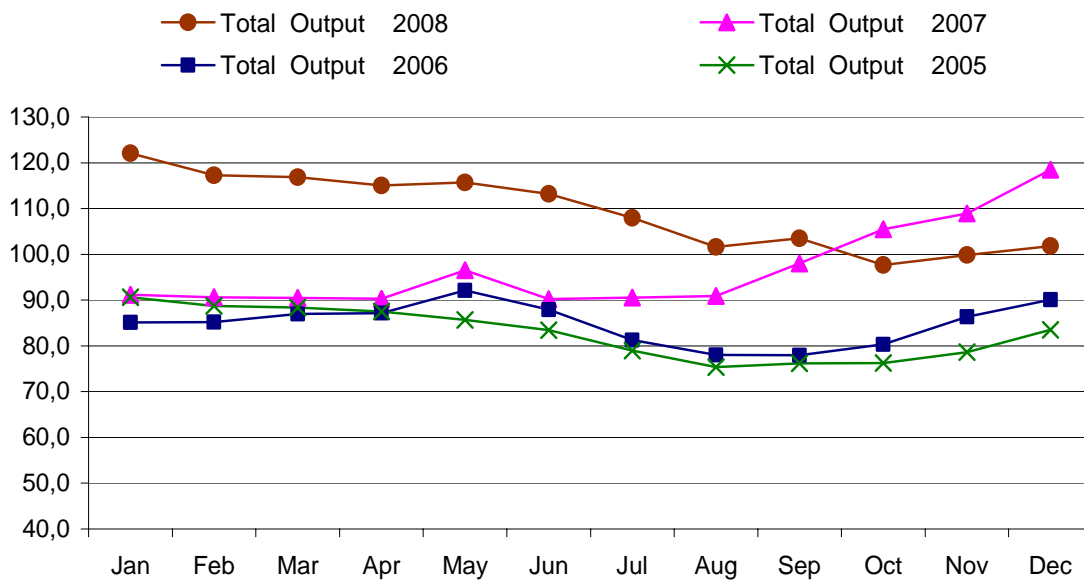


Figure 3: Monthly Output Price Index for Total Output for 2005/2006/2007 and 2008, (Nov.2003=100)



Output Price Index for agriculture products**Table 1: Monthly Output Price Index, October-December 2008 (Nov. 2003 =100)**

Code	Groups	Weight in %	Nov-03	2008		
				Oct	Nov	Dec
0 1	Cereals	96	100	130,0	128,6	124,7
0 1.1	Wheat	54	100	105,7	103,1	99,4
0 1.3	Barley	19	100	210,5	210,5	210,5
0 1.5	Maize	23	100	119,3	119,3	111,8
0 2	Industrial crops	4	100	:	:	:
0 2.1.2	Sunflower	4	100	:	:	:
0 3	Forage plants	194	100	109,3	111,5	113,2
0 3.1	Fodder maize	85	100	119,3	119,3	111,8
0 3.9	Other forage plants	109	100	101,4	105,4	114,4
0 3.9.1	Hay	41	100	111,5	115,9	127,4
0 3.9.2	Straw	16	100	74,1	75,4	78,1
0 3.9.9	Other forage plants ;others	51	100	102,1	106,5	115,5
0 4	Vegetables	336	100	68,8	68,2	68,7
0 4.1	Fresh vegetables	336	100	68,8	68,2	68,7
0 4.1.2	Tomatoes	48	100	98,5	98,5	98,5
0 4.1.9	Other fresh vegetables	287	100	63,8	63,1	63,7
0 4.1.9.1	Cabbage	17	100	95,0	102,0	95,0
0 4.1.9.3	Spinach	1	100	87,2	91,5	91,5
0 4.1.9.4	Cucumbers	6	100	95,5	95,5	95,5
0 4.1.9.6	Onions	19	100	79,5	76,9	79,5
0 4.1.9.7	Beans	90	100	131,7	130,1	124,4
0 4.1.9.9.9	Other fresh vegetable;other	154	100	46,3	46,4	46,3
0 5	Potatoes	71	100	84,0	86,0	86,0
0 6	Fruits	152	100	92,5	102,9	112,5
0 6.1	Fresh fruits	78	100	102,7	115,0	121,6
0 6.1.1	Apple	28	100	119,4	113,9	105,6
0 6.1.2	Pears	5	100	71,6	81,8	104,3
0 6.1.9	Other fresh fruit	45	100	95,9	119,5	133,5
0 6.1.9.2	Plums	15	100	104,2	104,2	104,2
0 6.1.9.4	Nuts and dried fruit	30	100	91,8	127,0	147,8
0 6.4	Grapes	74	100	81,7	90,1	103,0
10	Crop Output	853	100	90,0	92,2	94,0
11	Animals	108	100	150,7	153,5	156,9
11.1	Cattle	85	100	149,5	153,6	157,2
11.2	Pigs	9	100	123,3	123,3	124,4
11.4	Sheep	11	100	152,0	150,0	151,0
11.5	Poultry	3	100	254,5	243,2	257,3
12	Animal Products	39	100	118,6	119,0	119,6
12.1	Milk	33	100	120,8	121,3	122,3
12.2	Eggs	1	100	140,5	141,9	142,6
12.9	Other animal products	6	100	102,1	102,1	100,0
13	Animal Output	147	100	142,1	144,2	146,9
14	Total Output	1.000	100	97,7	99,8	101,8

Changes in Output Price Index, percent

Table 2: Changes in Output Price Index for same month, October - December 2008/2007, percent

Code	Groups	Weight in %	Oct-08 / Oct-07 % change	Nov-08 / Nov-07 % change	Dec-08 / Dec-07 % change
0 1	Cereals	96	-22,0	-24,1	-26,0
0 1.1	Wheat	54	-34,5	-36,5	-38,4
0 1.3	Barley	19	-11,11	-11,11	-11,11
0 1.5	Maize	23	0,0	-7,2	-12,0
0 2	Industrial crops	4	:	:	:
0 2.1.2	Sunflower	4	:	:	:
0 3	Forage plants	194	-0,5	-8,7	-14,3
0 3.1	Fodder maize	85	0,0	-7,2	-12,0
0 3.9	Other forage plants	109	-1,0	-10,0	-16,0
0 3.9.1	Hay	41	0,0	-10,9	-20,0
0 3.9.2	Straw	16	-18,0	-18,0	-16,6
0 3.9.9	Other forage plants; others	51	3,1	-7,1	-12,0
0 4	Vegetables	336	-19,0	-16,2	-23,5
0 4.1	Fresh vegetables	336	-19,0	-16,2	-23,5
0 4.1.2	Tomatoes	48	15,4	-6,0	-25,3
0 4.1.9	Other fresh vegetables	287	-24,8	-18,6	-23,1
0 4.1.9.1	Cabbage	17	-58,7	-46,3	-45,7
0 4.1.9.3	Spinach	1	-18,0	-17,3	-26,1
0 4.1.9.4	Cucumbers	6	0,0	-7,1	-24,6
0 4.1.9.6	Onions	19	0,0	-1,6	0,0
0 4.1.9.7	Beans	90	2,5	-1,8	0,0
0 4.1.9.9.9	Other fresh vegetable;other	154	3,4	-30,1	-47,2
0 5	Potatoes	71	2,4	4,9	2,4
0 6	Fruits	152	-9,9	-11,5	-23,1
0 6.1	Fresh fruits	78	-16,2	-2,6	-18,2
0 6.1.1	Apple	28	0,0	7,9	-7,3
0 6.1.2	Pears	5	-13,7	-8,6	2,8
0 6.1.9	Other fresh fruit	45	-25,7	-7,4	-24,0
0 6.1.9.2	Plums	15	-19,5	-19,5	-19,5
0 6.1.9.4	Nuts and dried fruit	30	-28,8	-1,5	-25,4
0 6.4	Grapes	74	0,0	-21,2	-28,4
10	Crop Output	853	-12,4	-13,8	-20,3
11	Animals	108	19,9	23,6	26,3
11.1	Cattle	85	17,9	23,1	27,1
11.2	Pigs	9	27,5	29,9	28,6
11.4	Sheep	11	17,1	15,6	10,8
11.5	Poultry	3	57,9	43,3	49,2
12	Animal Products	39	8,2	7,5	4,5
12.1	Milk	33	8,7	8,1	5,2
12.2	Eggs	1	13,7	13,9	0,5
12.9	Other animal products	6	4,3	2,1	0,0
13	Animal Output	147	17,1	19,6	20,8
14	Total Output	1.000	-7,4	-8,3	-14,1

Absolute average prices in euro for some major agriculture products**Table 3: Absolute average prices in euro for some major agriculture products, October – December 2008**

Code	Products	Quantity	2008		
			Oct	Nov	Dec
0 1.1	Wheat ¹	kg	0,24	0,23	0,23
0 1.3.2	Barly ²	kg	0,40	0,40	0,40
0 1.5	Maize ³	kg	0,27	0,27	0,26
0 2.1.2	Sunflower ⁴	kg	:	:	:
0 3.9.1	Hay ⁵	kg	0,18	0,19	0,21
0 3.9.2	Straw ⁶	kg	0,09	0,09	0,09
0 3.9.9	Lucern ⁷	kg	0,20	0,21	0,22
0 4.1.9.1	Cabbage ⁸	kg	0,14	0,15	0,14
0 4.1.9.6	Onion ⁹	kg	0,44	0,43	0,44
0 4.1.9.9.9	Pepper ¹⁰	kg	0,71	0,71	:
0 4.1.9.3	Spinach ¹¹	kg	0,59	0,61	0,61
0 4.1.9.7	Beans ¹²	kg	2,31	2,29	2,19
0 4.1.2	Tomatoes ¹³	kg	0,86	:	:
0 4.1.9.4	Cucumber ¹⁴	kg	0,84	:	:
0 4.1.9.9.9	Watermelon ¹⁵	kg	:	:	:
0 4.1.9.9.9.3	Leek ¹⁶	kg	0,64	0,71	0,70
0 4.1.9.9.9.4	Garlic ¹⁷	kg	1,79	1,93	1,81
0 5	Potatoes ¹⁸	kg	0,30	0,31	0,31
0 6.1.1	Apple ¹⁹	kg	0,61	0,59	0,54
0 6.1.2	Pear ²⁰	kg	0,90	1,03	1,31
0 6.1.9.2	Plums ²¹	kg	0,51	:	:
0 6.1.9.4.1	Chestnuts ²²	kg	0,73	1,01	1,18
0 6.4.1	Grape ²³	kg	0,83	0,91	:
11.1.1	Bulls and heifers ²⁴	kg	2,07	2,13	2,18
11.2	Pigs ²⁵	kg	2,16	2,16	2,18
11.4	Sheep ²⁶	kg	2,21	2,19	2,20
11.5.1	Hens ²⁷	1 pieces	7,50	7,17	7,58
12.1	Milk ²⁸	lit.	0,34	0,34	0,34
12.9	Honey ²⁹	kg	6,86	6,86	6,71
12.2	Eggs ³⁰	30 pieces	2,91	2,94	2,95

1

1 - 1 Wheat – is domestic, 2 Barley for production of beer, 3 Maize – Hybrid 448, 4 Sunflower, 5 Hay produced in meadow, 6 Wheat straw (Stubble wheat), 7 Lucerne, 8 Cabbage (Hybrid 4), 9 Onions- second quality, 10 Pepper- variety Sombork, 11 Spinach- variety Matador, 12 Beans- second quality, 13 Tomatoes- variety Arleta, 14 Cucumber- variety Cornishon, 15 Watermelon– is domestic product, 16 Leek, 17 Garlic, 18 Potatoes- variety Condor, 19 Apple –variety Ida red, 20 Pear-variety autochthones, 21.Plums–variety Stenley, 22 Chestnuts – domestic product, 23 Grapes-variety Hamburg, 24 Live weight per 1kg for bulls and heifers aged 18-22 months domestic pedigree, 25 Live weight per 1kg for pigs aged 10-12 months domestic pedigree, 26 Live weight per 1kg for sheep domestic pedigree (white, mug) aged older than 12 months, 27 Hens– domestic (18 weeks old), 28 Milk –price for 1litre cow milk with 3.2% fat, 29 Honey domestic product, 30 Price for 30 pieces of eggs, first class of quality.

Figure 4: Absolute average prices for wheat and maize, January – December 2007 and 2008, Euro/kg.

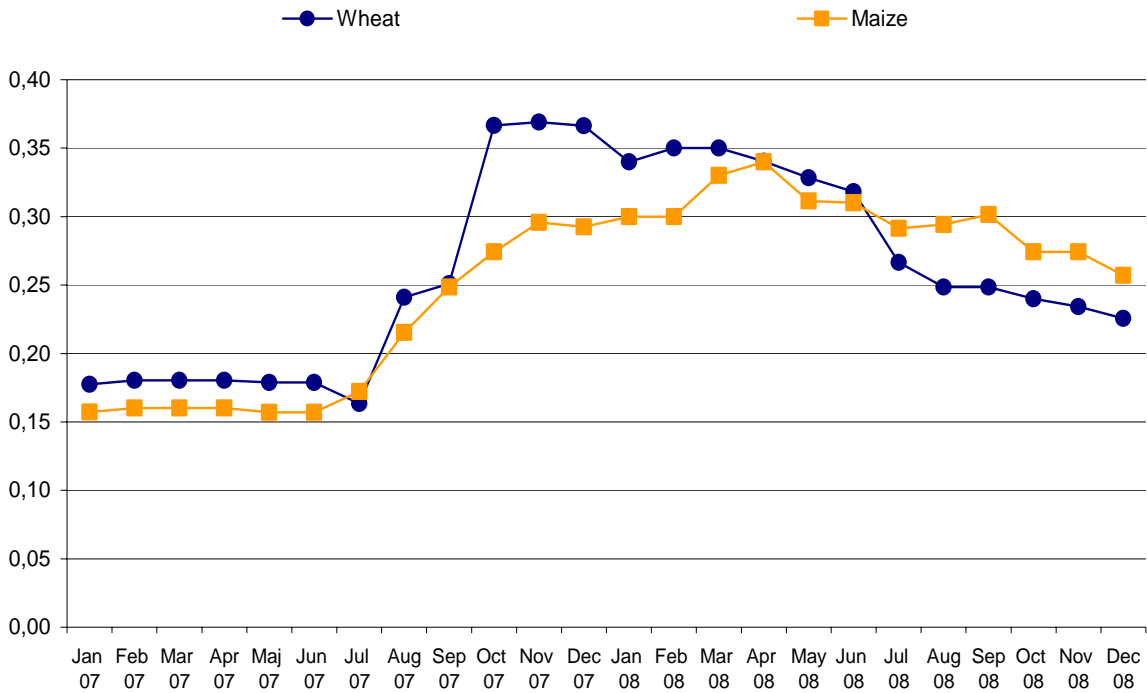


Figure 5: Absolute average prices for hay, straw and lucerne, January – December 2007 and 2008, Euro/kg

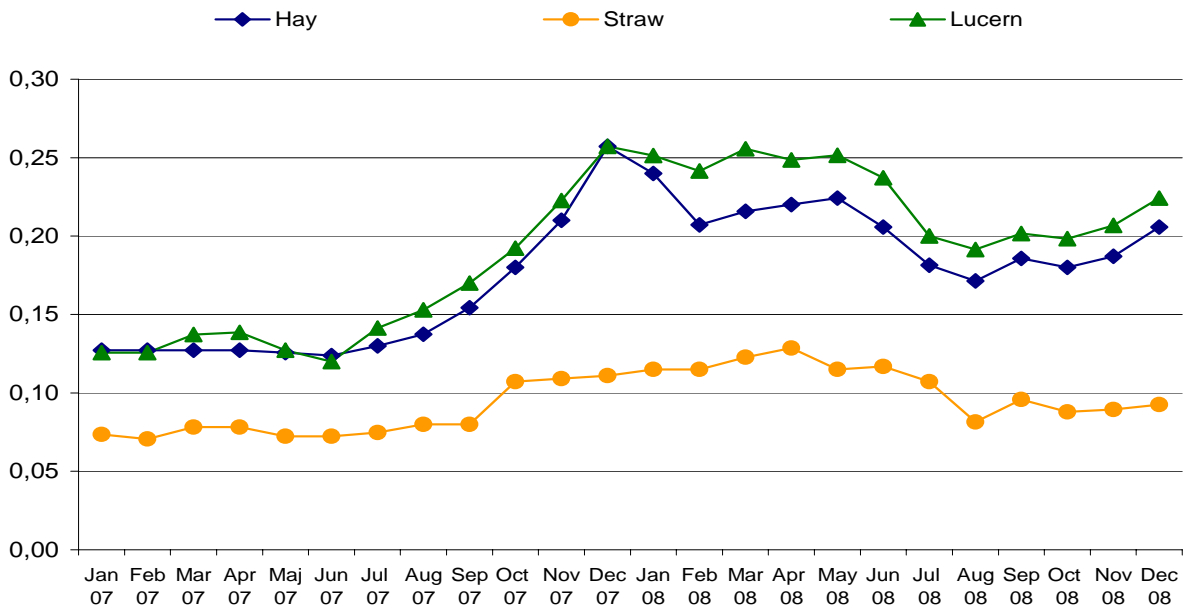


Figure 6: Absolute average prices for potatoes, tomatoes, pepper and cabbage, January – December 2007 and 2008, Euro/kg

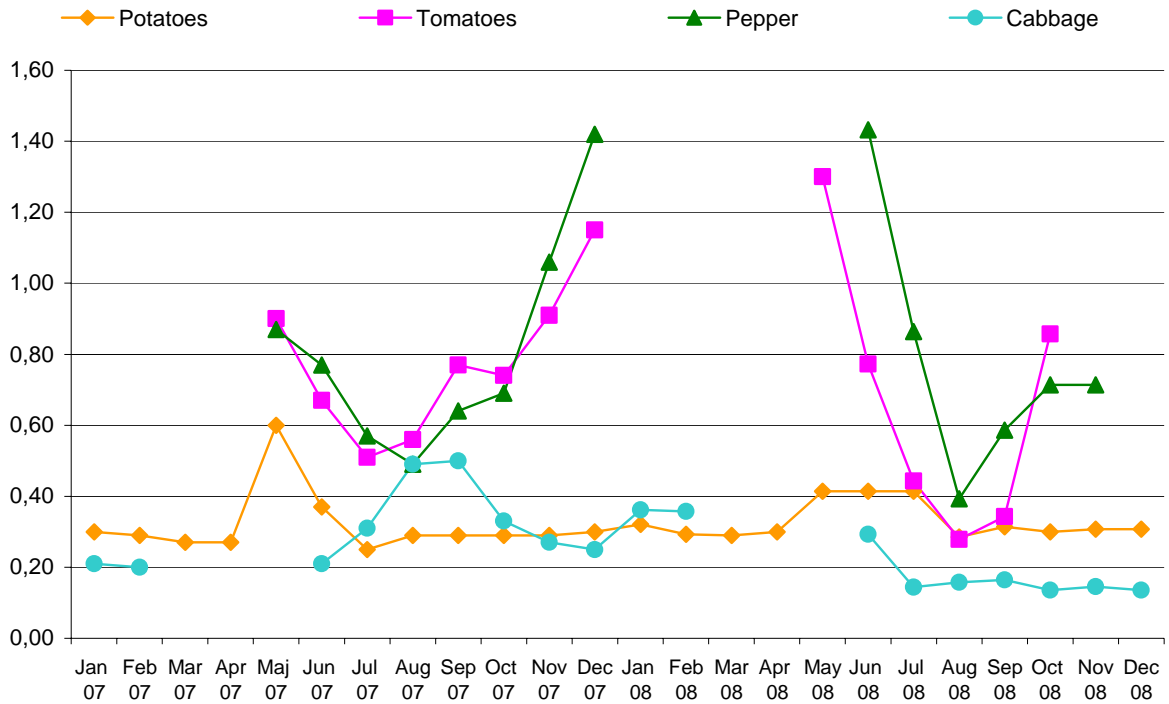


Figure 7: Absolute average prices for heifers and bulls, pigs and sheep calculated as live weight, January – December 2007 and 2008, Euro/kg

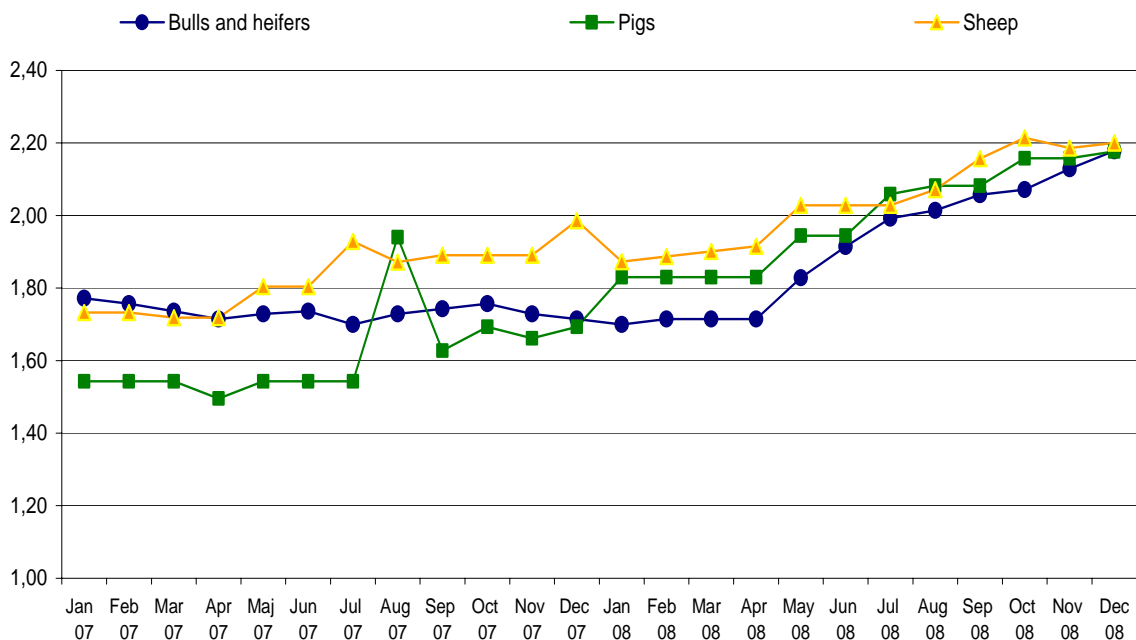


Table 4: Price changes for some major agriculture products, October-December (2008/2007), percent

Code	Products	Quantity	Oct-08 / Oct-07 %	Nov-08 / Nov-07 %	Dec-08 / Dec-07 %
0 1.1	Wheat ¹	kg	-34,5	-36,5	-38,4
0 1.3.2	Barly ²	kg	-11,1	-11,1	-11,1
0 1.5	Maize ³	kg	0,0	-7,2	-12,0
0 2.1.2	Sunflower ⁴	kg	:	:	:
0 3.9.1	Hay ⁵	kg	0,0	-10,9	-20,0
0 3.9.2	Straw ⁶	kg	-18,0	-18,0	-16,6
0 3.9.9	Lucern ⁷	kg	3,1	-7,1	-12,0
0 4.1.9.1	Cabbage ⁸	kg	-58,7	-46,3	-45,7
0 4.1.9.6	Onion ⁹	kg	0,0	-1,6	0,0
0 4.1.9.9.9	Pepper ¹⁰	kg	4,2	-32,4	:
0 4.1.9.3	Spinach ¹¹	kg	-18,0	-17,3	-26,1
0 4.1.9.7	Beans ¹²	kg	2,5	-1,8	0,0
0 4.1.2	Tomatoes ¹³	kg	15,4	:	:
0 4.1.9.4	Cucumber ¹⁴	kg	0,0	:	:
0 4.1.9.9.9	Watermelon ¹⁵	kg	:	:	:
0 4.1.9.9.9.3	Leek ¹⁶	kg	-3,3	16,3	-12,5
0 4.1.9.9.9.4	Garlic ¹⁷	kg	-6,0	0,0	-8,0
0 5	Potatoes ¹⁸	kg	2,4	4,9	2,4
0 6.1.1	Apple ¹⁹	kg	0,0	7,9	-7,3
0 6.1.2	Pear ²⁰	kg	-13,7	-8,6	2,8
0 6.1.9.2	Plums ²¹	kg	-19,5	:	:
0 6.1.9.4.1	Chestnuts ²²	kg	-28,8	-1,5	-25,4
0 6.4.1	Grape ²³	kg	0,0	-21,2	:
11.1.1	Cattle ²⁴	kg	17,9	23,1	27,1
11.2	Pigs ²⁵	kg	27,5	29,9	28,6
11.4	Sheep ²⁶	kg	17,1	15,6	10,8
11.5.1	Hens ²⁷	1 pieces	57,9	43,3	49,2
12.1	Milk ²⁸	lit.	8,7	8,1	5,2
12.9	Honey ²⁹	kg	4,3	2,1	0,0
12.2	Eggs ³⁰	30 pieces	13,7	13,9	0,5

2 - 1 Wheat – is domestic, 2 Barley for production of beer, 3 Maize – Hybrid 448, 4 Sunflower, 5 Hay produced in meadow, 6 Wheat straw (Stubble wheat), 7 Lucerne, 8 Cabbage (Hybrid 4), 9 Onions- second quality, 10 Pepper- variety Sombork, 11 Spinach- variety Matador, 12 Beans- second quality, 13 Tomatoes- variety Arleta, 14 Cucumber- variety Cornishon, 15 Watermelon– is domestic product, 16 Leek, 17 Garlic, 18 Potatoes- variety Condor, 19 Apple –variety Ida red, 20 Pear-variety autochthones, 21.Plums–variety Stanley, 22 Chestnuts – domestic product, 23 Grapes-variety Hamburg, 24 Live weight per 1kg for bulls and heifers aged 18-22 months domestic pedigree, 25 Live weight per 1kg for pigs aged 10-12 months domestic pedigree, 26 Live weight per 1kg for sheep domestic pedigree (white, mug) aged older than 12 months, 27 Hens– domestic (18 weeks old), 28 Milk –price for 1litre cow milk with 3.2% fat, 29 Honey domestic product, 30 Price for 30 pieces of eggs, first class of quality

Methodology

Price indices in this publication have been calculated according standards for price statistics in European Union. The project for calculating these prices and price indices was conducted in the frame of the project of "Improving agro monetary statistics" in cooperation with Statistic Sweden and with financial support by Sida (Swedish International Development Cooperation Agency).

Prices have been collected since November, 2003 and are collected in seven regions: Peja, Pristina, Prizren, Ferizaj, Gjiilan, Gjakova, and Mitrovica regions. Prices are collected around the 15th in every month.

Prices are collected for 64 products and measures prices that farmers receive for the production that are sold outside the sector.

Preliminary weights to calculate aggregated indices are mainly based on agriculture household survey 2002. In the future these weights should be obtained from the Economic Accounts for Agriculture (EAA).

Base month for the index calculations is November 2003 (Nov 2003=100).

Calculation of elementary Price Index

Calculations of elementary indices are in general done by using following formula, with un-weighted arithmetic mean price.

$$R_i^t = \frac{\frac{1}{n} \sum P_{ij}^t}{\frac{1}{n} \sum P_{ij}^0} \cdot 100$$

R_i^t – Elementary index for month t and product i

P – Collected price

i – Product i

j – Price j recorded for product (in general price for region)

t – Observed month

0 – Base month

Calculation of aggregated Price Index

Calculating aggregated index for total Output or subgroups of Output Index is done using following formula.

$$I^t = \sum R_i^t \cdot \frac{w_i^0}{\sum w_i^0}$$

I^t – Aggregated index for period t

w_i^0 – Weighting factor in base period for product i

i – Product i

t – Observed month

0 – Base month

Questionnaire

Target definition

Item number	Item name			Quantity	Unit	
Price Collector				Collection place/ Company		
Date						
Price						

<p>Enumerators notes</p> <ul style="list-style-type: none"> - Detailed description of specific variety selected for re-pricing - Changes in the detailed description, date for changes - Treatment of quality change when description changed (information of over-lap price observation, alt. valuation of quality change)
--

Statistical Office of Kosovo, a brief description

The Statistical Office of Kosovo (SOK) is a professional office operating since 1948. The SOK passed through some of the historic phases and it has been structured by the state rule of that time. SOK restarted its work on August 2, 1999, as an independent and professional office working in the frames of the Ministry of Public Services (MPS). SOK is financed by the Kosovo Consolidated Budget and by donors for the various projects.

The Statistical Office of Kosovo acts pursuant the UNMIK Regulation 2001/14 that entered into force on July 2, 2001. A medium-term Master Plan is being developed for the statistical system of Kosovo compatible with the European Statistics.

The SOK Organization Structure; composes of four departments for production of statistics (Department of Economic Statistics and National Accounts, Department of Population Statistics, Department of Social Statistics and Department of Agricultural and Environment Statistics), seven Regional Offices (located in Gjakova, Gjilan, Mitrovica, Peja, Prizren, Pristina and Ferizaj), two support departments (Department of Methodology and Information Technology, and Department of Administration), as well as the Office of the Population Census.

Total number employees is 134, of them 96 (71.6%) within the SOK offices whilst 38 (28.4%) in regional offices.

There is also a support and cooperation with the international institutions.

The Statistical Office of Kosovo covers Kosovo entirely. For implementation of the surveys in the field, the SOK uses appropriate sampling and methodology approach. In the collection of the reports from the reporting units, the SOK engages professionals, technicians, administrators and civilians from the local offices and regional field population census.

Recently, a team of national and international experts is working in the project of the population census.

SOK Mission is to fulfill the needs of the users with the reliable statistical data and with regular analyses in order to support and provide government departments with the proper information for decision-making process including other users as well.

- **Address: Statistical Office of Kosovo, Str. Zenel Salihu, No. 4, Pristina**
- **Telephones:**
Head-Quarters: +381 (0) 38 235 111
Director: +381 (0) 38 235 545
- **Fax: +381 (0) 38 235 033**
- **E-mail: agriculture@ks-gov.net**
- **Web-site: www.ks-gov.net/esk**