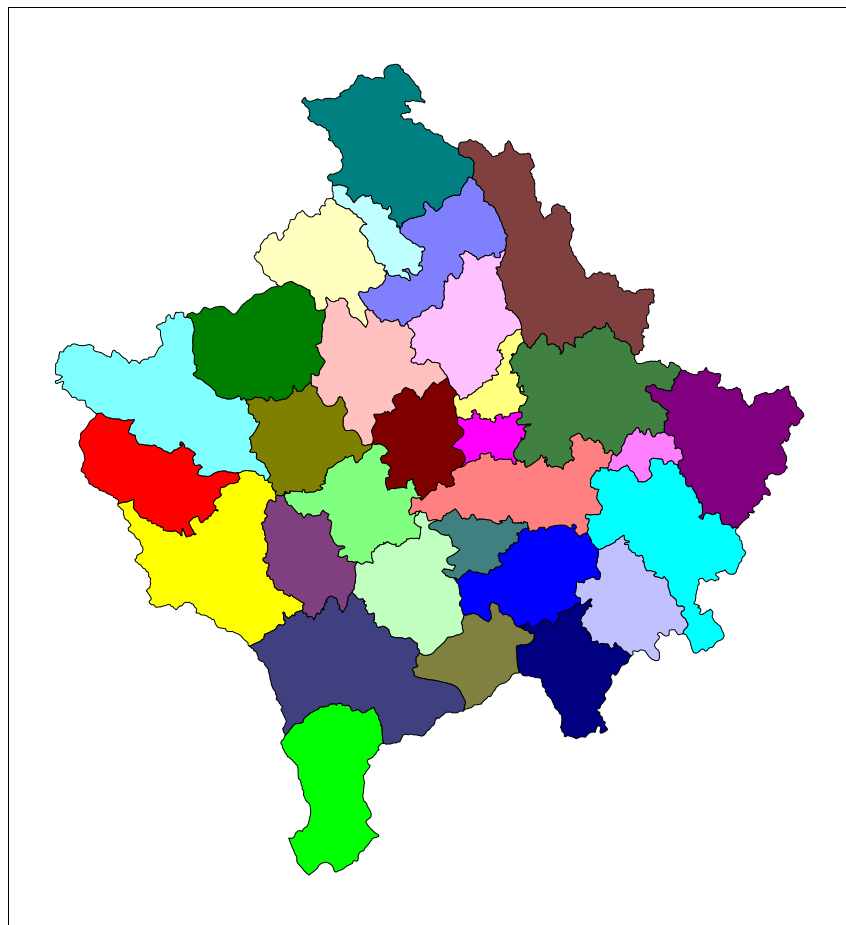




Republika e Kosovës  
Republika Kosova-Republic of Kosovo  
*Qeveria - Vlada - Government*  
*Ministria e Shërbimeve Publike - Ministarstvo Jaonih Sluzbi - Ministry of Public Services*

## Series 2: Agriculture and Environment Statistics

# Output Price Index and Prices in Agriculture (April – June 2008)



Enti i Statistikës së Kosovës  
Zavod za Statistiku Kosova  
Statistical Office of Kosovo

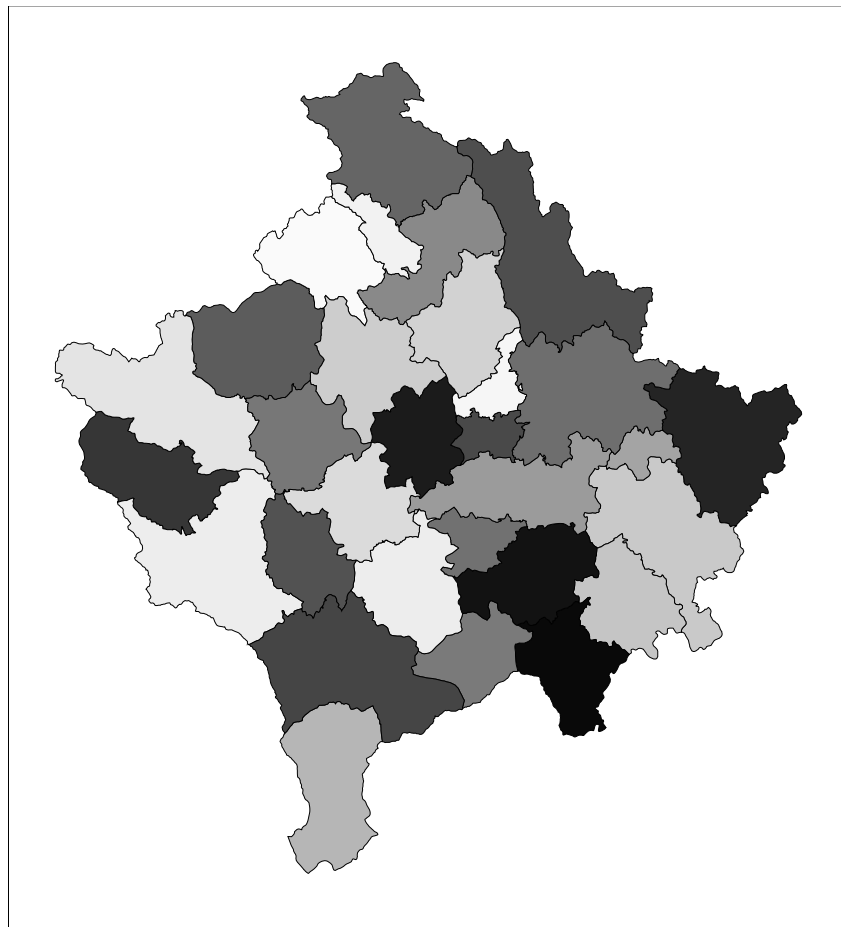




Republika e Kosovës  
Republika Kosova-Republic of Kosovo  
*Qeveria - Vlada - Government*  
*Ministria e Shërbimeve Publike - Ministarstvo Jaonih Sluzbi - Ministry of Public Services*

## Series 2: Agriculture and Environment Statistics

# Output Price Index and Prices in Agriculture (April - June 2008)



Enti i Statistikës së Kosovës  
Zavod za Statistiku Kosova  
Statistical Office of Kosovo

Publisher: Statistical Office of Kosovo (SOK)  
Publication date: August 2008  
© Statistical Office of Kosovo  
Reproduction is authorized when source is indicated only  
Printed by the K.G.T, Pristina, Kosovo

More information is available on Internet  
[www.ks-gov.net/esk](http://www.ks-gov.net/esk)

## P r e f a c e

Agriculture and Environment Statistics Department started to collect data on prices for agriculture products in November 2003. In the beginning, prices were collected for a limited number of items. At the moment prices for 64 different items concerning agricultural output are collected. The plan for the future is to both increase the number of products and also to complement it with an Input Price Index.

This is the seventh publication on Output Price Index and Average Absolute Prices for agriculture products produced by Statistical Office of Kosovo (SOK). In this publication, Output Price Index and prices for some major agriculture products are presented.

SOK is grateful to the Swedish International Development Cooperation Agency (SIDA) for their support of build up the agro monetary statistics system. SOK also is grateful for their corporation of all co-workers at the regional offices, other respondents of data collection as: agriculture farms, industrial and trade enterprises etc.

Especially grateful to Swedish price statistics experts Mr. Tomas Eriksson, Mr. Daniel Persson and Statistics Sweden Long-term consultant Mrs. Milva Ekonomi and others who directly or indirectly assisted on finalisation of this publication.

This publication was prepared by following personnel from Agriculture and Environmentt Statistics Department at SOK.

Bajrush Qevani - Director of Department,  
Haki Kurti – Chief of Division,  
Violeta Arifi – Gashi – Chief of Section,  
Kademsha – Bajramaga –Senior Officer  
Design: Ahmet Cakolli.

Tel: +381 (0) 38 235 111, ext 264  
E- mail: agriculture@ks-gov.net  
Web-site: www.ks-gov.net/esk

Suggestions, proposals and remarks for this publication are welcome and will help us to have more effective publications for users.

August 2008

Chief Executive Officer, SOK  
Avni Kastrati

## Abbreviations and Acronyms

SOK	Statistical Office of Kosovo
MPS	Ministry of Public Services
EAA	Economic Accounts for Agriculture
API	Agriculture Price Index
EU	European Union
SIDA	Swedish International Development Cooperation Agency

## Key to symbols

- Zero
- .. Data not available
- . Not applicable
- 0 Magnitude less than half of unit
- ‰ Promile

## **C o n t e n t**

	Page
Output price index for agriculture products, April – June 2008	5
Changes in output price index, percent	8
Absolute average price in euro for some major agriculture products	9
Changes in absolute average prices	12
Methodology	13
Questionnaire	14





## Output Price Index for agriculture products, first quarter 2008

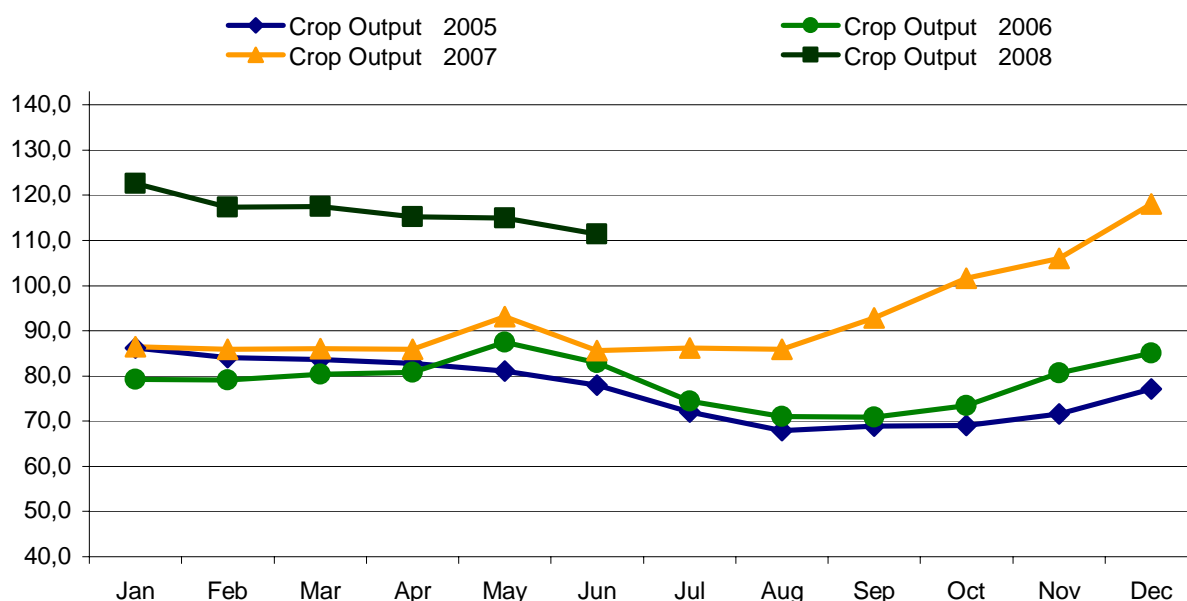
The publication includes data from April to Jun 2008. This publication is based on collection of prices for domestic products in Kosovo. The price collection was carried out at markets, farms and other places where prices on agriculture products are available.

The products which make up the base for the Output Price Index are divided into two main groups: Crop- and Animal Output. Within Crop Output, prices are collected under the following groups; Cereals, Industrial crops, Forage plants, Vegetables, Potatoes and Fruits. Within Animal Output, prices are collected for Animals and Animal Product. For Animals prices are collected for four categories; Cattle, Sheep, Pigs and Poultry. These prices are based on the live weight of the animals. Within animal products prices are collected for Milk, Eggs and Honey. All prices are calculated in Euro and the measurement unit is in kg, liter and piece.

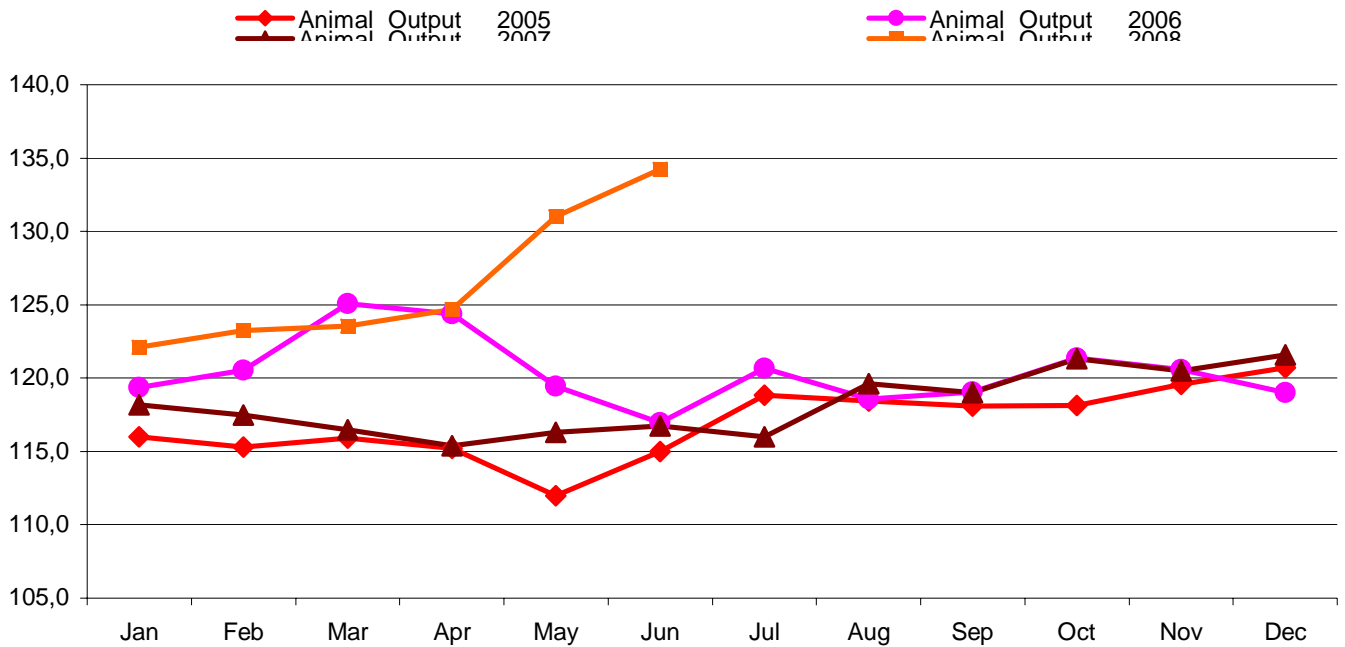
Figure 1, 2 and 3 shows monthly Output Price Index from January -December 2005/2006/2007 to second quartile 2008 for Total Output as well as for Crop- and Animal Output (November 2003 = 100).

In 2008 the index for the second quarter has increased with 11.9 % for Animal Output compared to the same period 2007. The index for Crop Output has increased with 29.1 % between the second quarter 2007 and 2008. Total Output Index has also increased during the period with 25.9 %.

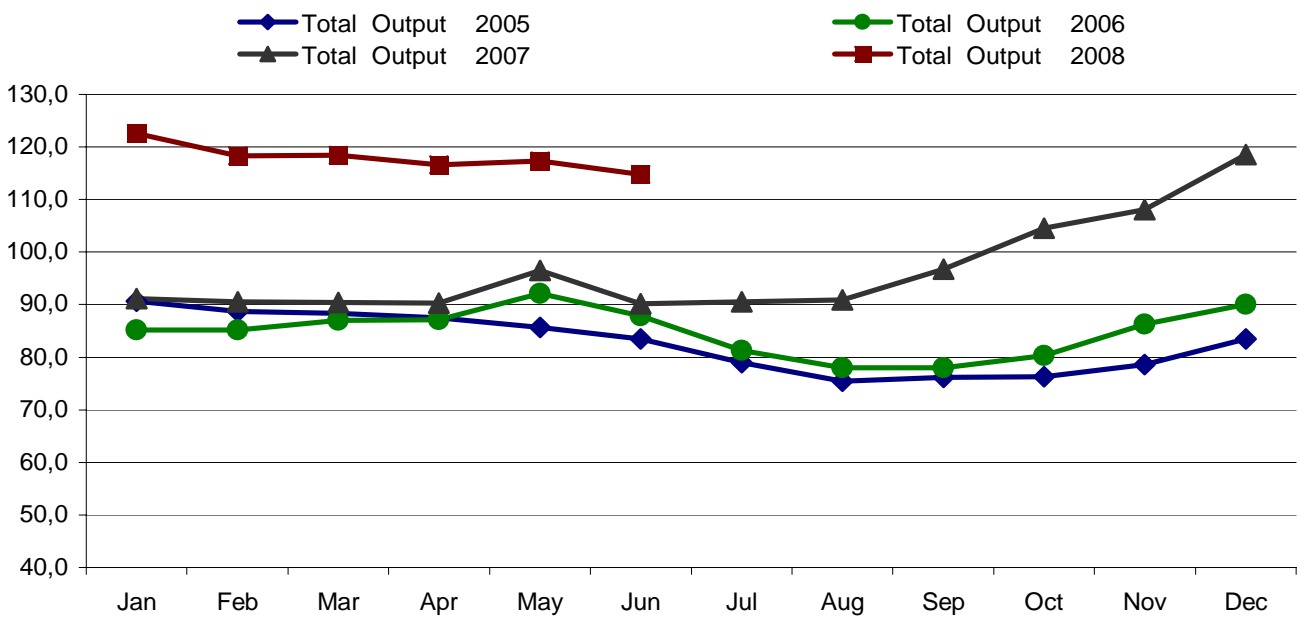
**Figure 1: Monthly output Price Index for Crop Output for 2005/2006/2007/ first and second quarter 2008, (Nov.2003=100)**



**Figure 2: Monthly output Price Index for Animal Output for 2005/2006/2007/ first and second quarter 2008, (Nov.2003=100)**



**Figure 3: Monthly output Price Index for Total Output for 2005/2006/2007 first and second quarter 2008, (Nov.2003=100)**



**Output Price Index for agriculture products****Table 1: Monthly Output Price Index, April – June 2008 (Nov. 2003 =100)**

Code	Groups	Weight in ‰	Nën-03	2008		
				Apr	May	Jun
<b>0 1</b>	<b>Cereals</b>	<b>96</b>	<b>100</b>	<b>151,0</b>	<b>139,8</b>	<b>142,4</b>
0 1.1	Wheat	54	100	149,8	144,5	140,1
0 1.3	Barley	19	100	:	:	:
0 1.5	Maize	23	100	147,8	135,4	134,8
<b>0,2</b>	<b>Industrial crops</b>	<b>4</b>	<b>100</b>	<b>:</b>	<b>:</b>	<b>:</b>
02.1.2	Sunflower	4	100	:	:	:
<b>0 3</b>	<b>Forage plants</b>	<b>194</b>	<b>100</b>	<b>136,8</b>	<b>131,3</b>	<b>126,8</b>
0 3.1	Fodder maize	85	100	147,8	135,4	134,8
0 3.9	Other forage plants	109	100	128,2	128,2	120,6
03.9.1	Hay	41	100	136,3	138,9	127,4
03.9.2	Straw	16	100	108,4	96,9	98,6
03.9.9	Other forage plants ;others	51	100	128,0	129,5	122,2
<b>0 4</b>	<b>Vegetables</b>	<b>336</b>	<b>100</b>	<b>81,9</b>	<b>80,8</b>	<b>73,7</b>
0 4.1	Fresh vegetables	336	100	81,9	80,8	73,7
0 4.1.2	Tomatoes	48	100	132,0	149,4	88,8
0 4.1.9	Other fresh vegetables	287	100	73,4	69,2	71,1
0 4.1.9.1	Cabbage	17	100	250,0	250,0	205,0
0 4.1.9.3	Spinach	1	100	76,6	70,2	85,5
0 4.1.9.4	Cucumbers	6	100	126,8	79,3	48,6
0 4.1.9.6	Onions	19	100	92,3	89,7	82,1
0 4.1.9.7	Beans	90	100	128,5	126,0	126,0
0 4.1.9.9.9	Other fresh vegetable;othe	154	100	87,7	87,7	88,4
<b>0 5</b>	<b>Potatoes</b>	<b>71</b>	<b>100</b>	<b>84,0</b>	<b>116,0</b>	<b>116,0</b>
<b>0 6</b>	<b>Fruits</b>	<b>152</b>	<b>100</b>	<b>156,6</b>	<b>156,6</b>	<b>156,6</b>
0 6.1	Fresh fruits	78	100	168,7	168,7	168,7
0 6.1.1	Apple	28	100	117,2	117,2	117,2
0 6.1.2	Pears	5	100	157,0	157,0	157,0
0 6.1.9	Other fresh fruit	45	100	202,1	202,1	202,1
0 6.1.9.2	Plums	15	100	232,3	232,3	232,3
0 6.1.9.4	Nuts and dried fruit	30	100	187,4	187,4	187,4
0 6.4	Grapes	74	100	143,9	143,9	143,9
<b>10</b>	<b>Crop Output</b>	<b>853</b>	<b>100</b>	<b>115,2</b>	<b>114,9</b>	<b>111,4</b>
<b>11</b>	<b>Animals</b>	<b>108</b>	<b>100</b>	<b>125,9</b>	<b>133,7</b>	<b>138,8</b>
11,1	Cattle	85	100	123,7	132,0	138,1
11,2	Pigs	9	100	104,6	111,1	111,1
11,4	Sheep	11	100	131,5	139,2	139,2
11,5	Poultry	3	100	223,4	223,4	229,1
<b>12</b>	<b>Animal Products</b>	<b>39</b>	<b>100</b>	<b>121,3</b>	<b>123,5</b>	<b>121,8</b>
12,1	Milk	33	100	124,9	127,4	125,4
12,2	Eggs	1	100	110,7	114,5	112,1
12,9	Other animal products	6	100	102,1	102,1	102,1
<b>13</b>	<b>Animal Output</b>	<b>147</b>	<b>100</b>	<b>124,7</b>	<b>131,0</b>	<b>134,2</b>
<b>14</b>	<b>Total Output</b>	<b>1.000</b>	<b>100</b>	<b>116,6</b>	<b>117,3</b>	<b>114,8</b>

## Changes in Output Price Index, percent

Table 2: Changes in Output Price Index for same month, April - Jun 2008/2007, percent

Code	Groups	Weight in %	Apr-08 / Apr-07 % change	May-08 / May-07 % change	Jun-08/ Jun-07 % change
<b>0 1</b>	<b>Cereals</b>	<b>96</b>	<b>83,5</b>	<b>71,5</b>	<b>73,0</b>
0 1.1	Wheat	54	88,7	83,5	77,9
0 1.3	Barley	19	:	:	:
0 1.5	Maize	23	112,5	100,0	88,7
0,2	Industrial crops	4	:	:	:
02.1.2	Sunflower	4	:	:	:
<b>0 3</b>	<b>Forage plants</b>	<b>194</b>	<b>90,9</b>	<b>91,2</b>	<b>83,6</b>
0 3.1	Fodder maize	85	112,5	100,0	88,7
0 3.9	Other forage plants	109	74,8	84,5	79,3
03.9.1	Hay	41	73,0	78,4	66,3
03.9.2	Straw	16	64,4	59,0	61,7
03.9.9	Other forage plants; others	51	79,4	97,8	97,6
<b>0 4</b>	<b>Vegetables</b>	<b>336</b>	<b>1,1</b>	<b>-1,0</b>	<b>-2,6</b>
0 4.1	Fresh vegetables	336	1,1	-1,0	-2,6
0 4.1.2	Tomatoes	48	32,5	44,1	16,1
0 4.1.9	Other fresh vegetables	287	-5,6	-11,1	-5,8
0 4.1.9.1	Cabbage	17	78,6	78,6	41,4
0 4.1.9.3	Spinach	1	10,8	-8,3	-2,0
0 4.1.9.4	Cucumbers	6	16,0	-5,9	-1,6
0 4.1.9.6	Onions	19	8,5	-20,2	-11,1
0 4.1.9.7	Beans	90	47,7	42,2	42,2
0 4.1.9.9.	Other fresh vegetable;or	154	38,6	57,4	76,5
<b>0 5</b>	<b>Potatoes</b>	<b>71</b>	<b>10,5</b>	<b>-31,0</b>	<b>11,5</b>
<b>0 6</b>	<b>Fruits</b>	<b>152</b>	<b>28,7</b>	<b>28,7</b>	<b>28,7</b>
0 6.1	Fresh fruits	78	30,5	30,5	30,5
06.1.1	Apple	28	26,3	26,3	26,3
06.1.2	Pears	5	25,4	25,4	25,4
06.1.9	Other fresh fruit	45	32,6	32,6	32,6
06.1.9.2	Plums	15	78,9	78,9	78,9
06.1.9.4	Nuts and dried fruit	30	14,6	14,6	14,6
0 6.4	Grapes	74	26,5	26,5	26,5
<b>10</b>	<b>Crop Output</b>	<b>853</b>	<b>34,1</b>	<b>23,5</b>	<b>30,2</b>
<b>11</b>	<b>Animals</b>	<b>108</b>	<b>4,1</b>	<b>9,0</b>	<b>12,7</b>
11,1	Cattle	85	0,0	5,8	10,3
11,2	Pigs	9	22,4	26,0	26,0
11,4	Sheep	11	11,5	12,4	12,4
11,5	Poultry	3	43,6	42,1	44,6
<b>12</b>	<b>Animal Products</b>	<b>39</b>	<b>21,2</b>	<b>24,8</b>	<b>22,6</b>
12,1	Milk	33	25,5	28,7	26,0
12,2	Eggs	1	-0,1	7,1	8,3
12,9	Other animal products	6	0,0	4,3	4,3
<b>13</b>	<b>Animal Output</b>	<b>147</b>	<b>8,1</b>	<b>12,6</b>	<b>15,0</b>
<b>14</b>	<b>Total Output</b>	<b>1.000</b>	<b>29,2</b>	<b>21,6</b>	<b>27,3</b>

## Absolute average prices in euro for some major agriculture products

**Table 3: Absolute average prices in euro for some major agriculture products, April – June 2008**

Code	Products	Quantity	2008		
			Apr	May	Jun
0 1.1	Wheat <sup>1</sup>	kg	0,34	0,33	0,32
0 1.3.2	Barly <sup>2</sup>	kg	:	:	:
0 1.5	Maize <sup>3</sup>	kg	0,34	0,31	0,31
0 2.1.2	Sunflower <sup>4</sup>	kg	:	:	:
0 3.9.1	Hay <sup>5</sup>	kg	0,22	0,22	0,21
0 3.9.2	Straw <sup>6</sup>	kg	0,13	0,11	0,12
0 3.9.9	Lucern <sup>7</sup>	kg	0,25	0,25	0,24
0 4.1.9.1	Cabbage <sup>8</sup>	kg	:	:	0,29
0 4.1.9.6	Onion <sup>9</sup>	kg	0,51	0,50	0,46
0 4.1.9.9.9	Pepper <sup>10</sup>	kg	:	:	1,43
0 4.1.9.3	Spinach <sup>11</sup>	kg	0,51	0,47	0,57
0 4.1.9.7	Beans <sup>12</sup>	kg	2,26	2,21	2,21
0 4.1.2	Tomatoes <sup>13</sup>	kg	:	1,30	0,77
0 4.1.9.4	Cucumber <sup>14</sup>	kg	:	0,70	0,43
0 4.1.9.9.9	Watermelon <sup>15</sup>	kg	:	:	:
0 4.1.9.9.9.3	Leek <sup>16</sup>	kg	0,86	:	:
0 4.1.9.9.9.4	Garlic <sup>17</sup>	kg	2,04	1,99	1,99
0 5	Potatoes <sup>18</sup>	kg	0,30	0,41	:
0 6.1.1	Apple <sup>19</sup>	kg	:	:	:
0 6.1.2	Pear <sup>20</sup>	kg	:	:	:
0 6.1.9.2	Plums <sup>21</sup>	kg	:	:	:
0 6.1.9.4.1	Chestnuts <sup>22</sup>	kg	:	:	:
0 6.4.1	Grape <sup>23</sup>	kg	:	:	:
11.1.1	Bulls and heifers <sup>24</sup>	kg	1,71	1,83	1,91
11.2	Pigs <sup>25</sup>	kg	1,83	1,94	1,94
11.4	Sheep <sup>26</sup>	kg	1,92	2,03	2,03
11.5.1	Hens <sup>27</sup>	1 pieces	6,58	6,58	6,75
12.1	Milk <sup>28</sup>	lit.	0,35	0,36	0,35
12.9	Honey <sup>29</sup>	kg	6,86	6,86	6,86
12.2	Eggs <sup>30</sup>	30 pieces	2,29	2,37	2,32

1

1 - 1 Wheat – is domestic, 2 Barley for production of beer, 3 Maize – Hybrid 448, 4 Sunflower, 5 Hay produced in meadow, 6 Wheat straw (Stubble wheat), 7 Lucerne, 8 Cabbage (Hybrid 4), 9 Onions- second quality, 10 Pepper- variety Sombork, 11 Spinach- variety Matador, 12 Beans- second quality, 13 Tomatoes- variety Arleta, 14 Cucumber- variety Cornishon, 15 Watermelon– is domestic product, 16 Leek, 17 Garlic, 18 Potatoes- variety Condor, 19 Apple –variety Ida red, 20 Pear-variety autochthones, 21.Plums–variety Stanley, 22 Chestnuts – domestic product, 23 Grapes-variety Hamburg, 24 Live weight per 1kg for bulls and heifers aged 18-22 months domestic pedigree, 25 Live weight per 1kg for pigs aged 10-12 months domestic pedigree, 26 Live weight per 1kg for sheep domestic pedigree (white, mug) aged older than 12 months, 27 Hens– domestic (18 weeks old), 28 Milk –price for 1litre cow milk with 3.2% fat, 29 Honey domestic product, 30 Price for 30 pieces of eggs, first class of quality

Figure 4: Absolute average prices for wheat and maize in 2007 and January – June 2008, Euro/kg.

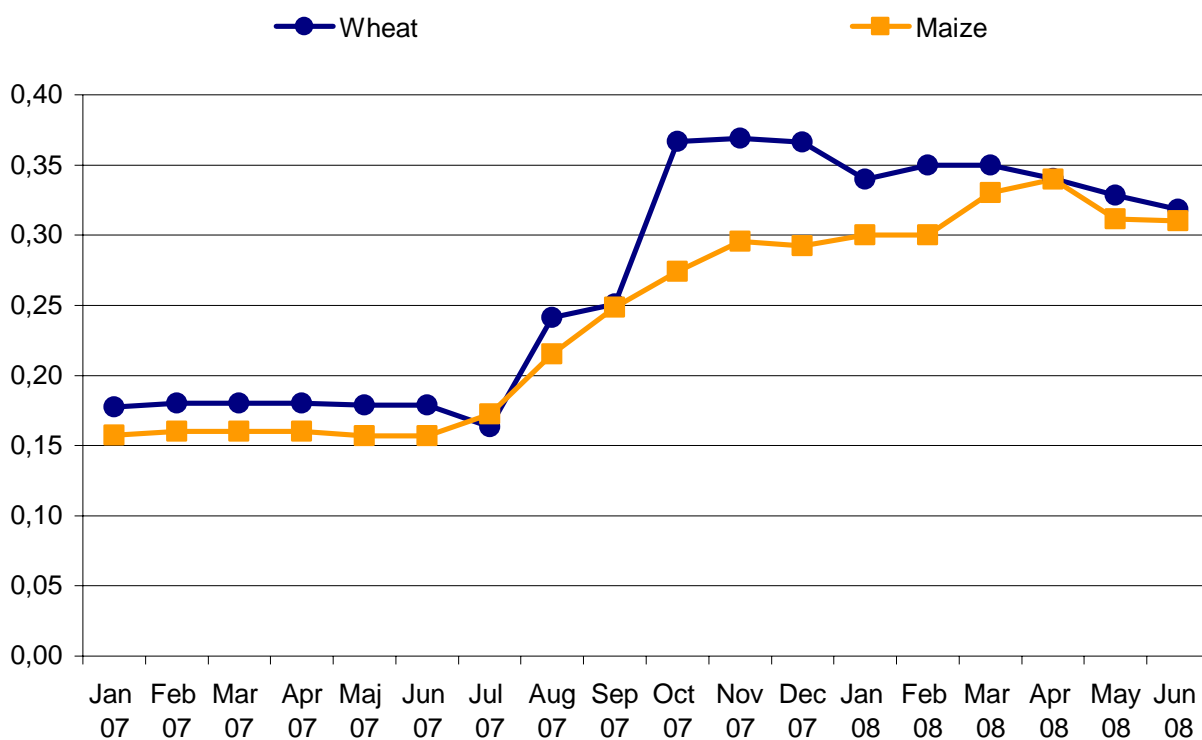
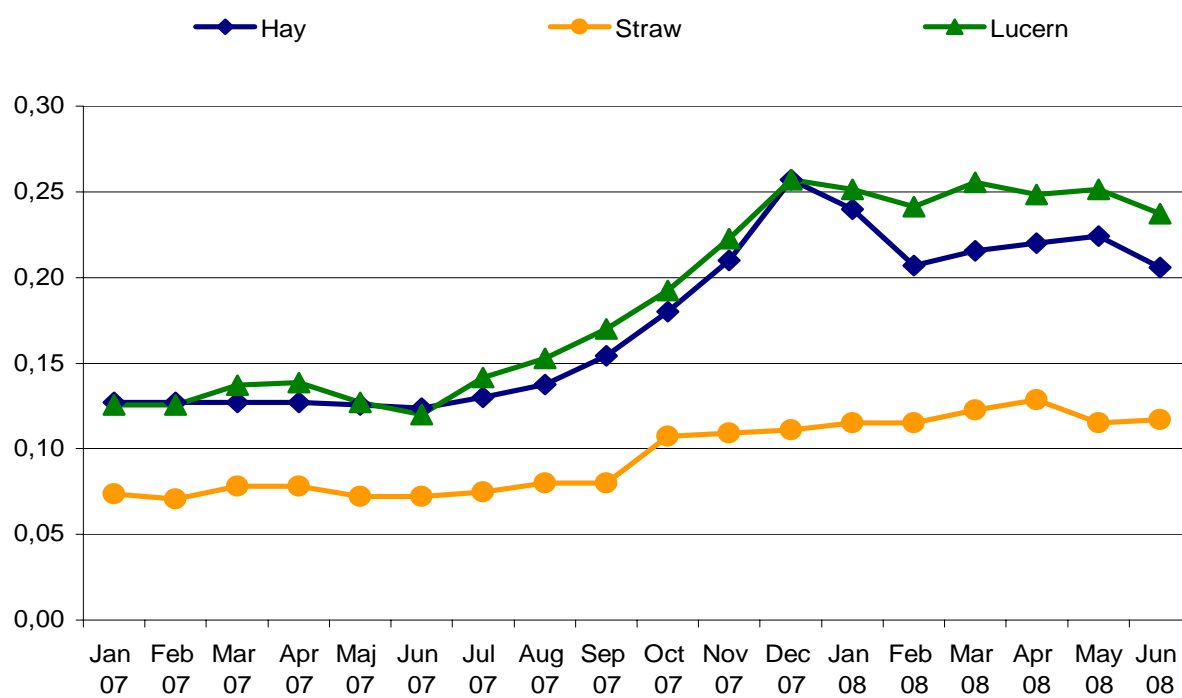
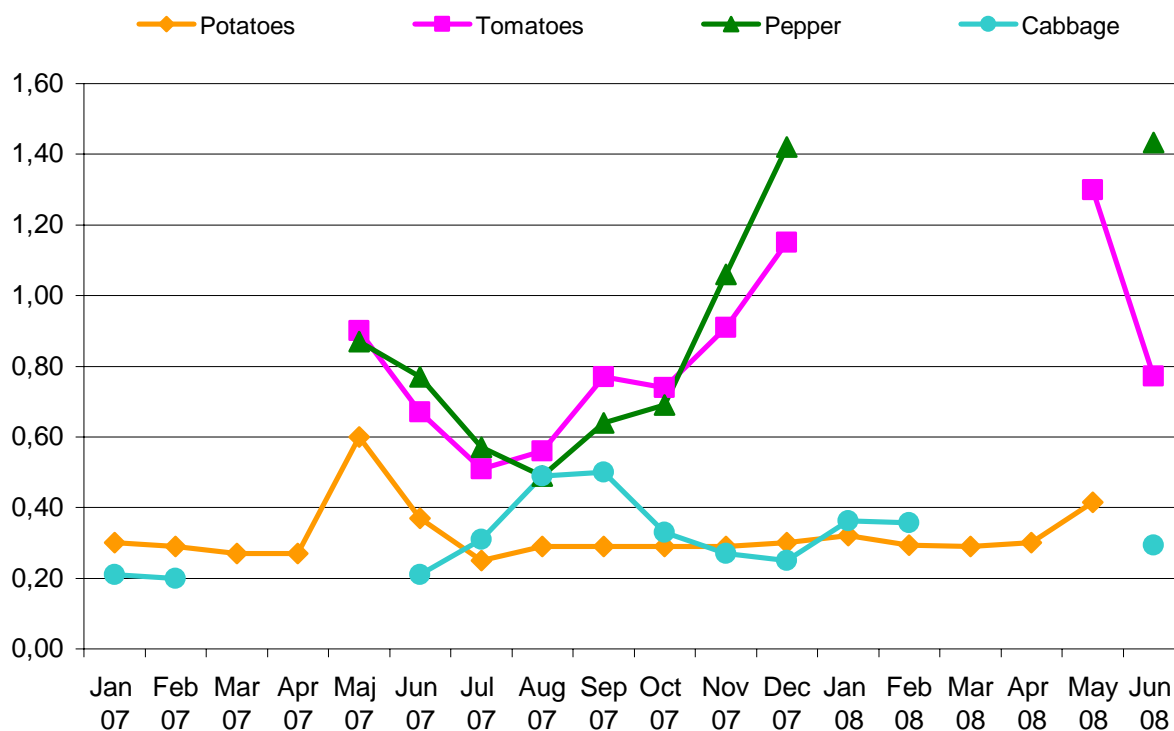


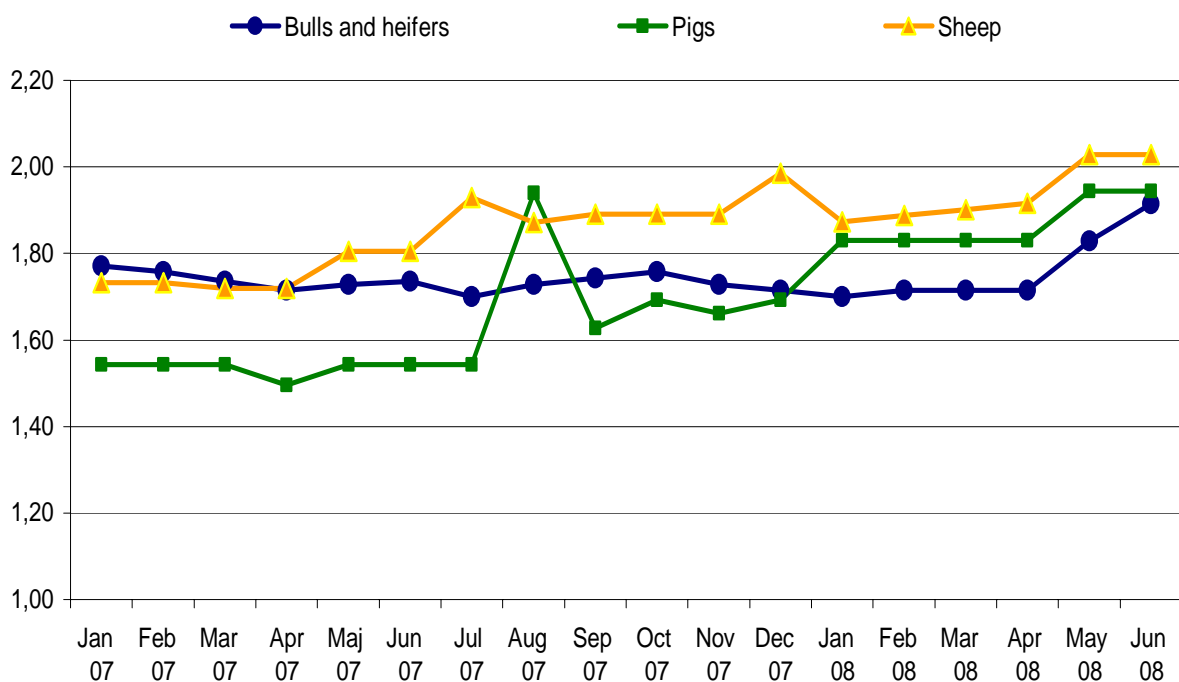
Figure 5: Absolute average prices for hay, straw and lucerne in 2007 and January – June 2008, Euro/ kg.



**Figure 6: Absolute average prices for potatoes, tomatoes, pepper and cabbage in 2007 and January – June 2008, Euro/kg**



**Figure 7: Absolute average prices for heifers and bulls, pigs and sheep calculated as live weight, in 2007 and January – June 2008, Euro/kg**



**Table 4: Price changes for some major agriculture products, April - June (2008/2007), percent**

Code	Products	Quantity	Apr-08 / Apr-07 %	May-08 / May-07 %	Jun-08 / Jun-07 %
0 1.1	Wheat <sup>1</sup>	kg	88,7	83,5	77,9
0 1.3.2	Barly <sup>2</sup>	kg	:	:	:
0 1.5	Maize <sup>3</sup>	kg	112,5	100,0	88,7
0 2.1.2	Sunflower <sup>4</sup>	kg	:	:	:
0 3.9.1	Hay <sup>5</sup>	kg	73,0	78,4	66,3
0 3.9.2	Straw <sup>6</sup>	kg	64,4	59,0	61,7
0 3.9.9	Lucern <sup>7</sup>	kg	79,4	97,8	97,6
0 4.1.9.1	Cabbage <sup>8</sup>	kg	:	:	41,4
0 4.1.9.6	Onion <sup>9</sup>	kg	8,5	-20,2	-11,1
0 4.1.9.9.9	Pepper <sup>10</sup>	kg	:	:	85,4
0 4.1.9.3	Spinach <sup>11</sup>	kg	10,8	-8,3	-2,0
0 4.1.9.7	Beans <sup>12</sup>	kg	47,7	42,2	42,2
0 4.1.2	Tomatoes <sup>13</sup>	kg	:	44,1	16,1
0 4.1.9.4	Cucumber <sup>14</sup>	kg	:	-5,9	-1,6
0 4.1.9.9.9	Watermelon <sup>15</sup>	kg	:	:	:
0 4.1.9.9.9.3	Leek <sup>16</sup>	kg	6,0	:	:
0 4.1.9.9.9.4	Garlic <sup>17</sup>	kg	2,1	1,1	11,7
0 5	Potatoes <sup>18</sup>	kg	10,5	-31,0	:
0 6.1.1	Apple <sup>19</sup>	kg	:	:	:
0 6.1.2	Pear <sup>20</sup>	kg	:	:	:
0 6.1.9.2	Plums <sup>21</sup>	kg	:	:	:
0 6.1.9.4.1	Chestnuts <sup>22</sup>	kg	:	:	:
0 6.4.1	Grape <sup>23</sup>	kg	:	:	:
11.1.1	Cattle <sup>24</sup>	kg	0,0	5,8	10,3
11.2	Pigs <sup>25</sup>	kg	22,4	26,0	26,0
11.4	Sheep <sup>26</sup>	kg	11,5	12,4	12,4
11.5.1	Hens <sup>27</sup>	1 pieces	43,6	42,1	44,6
12.1	Milk <sup>28</sup>	lit.	25,5	28,7	26,0
12.9	Honey <sup>29</sup>	kg	0,0	4,3	4,3
12.2	Eggs <sup>30</sup>	30 pieces	-0,1	7,1	8,3

2 - 1 Wheat – is domestic, 2 Barley for production of beer, 3 Maize – Hybrid 448, 4 Sunflower, 5 Hay produced in meadow, 6 Wheat straw (Stubble wheat), 7 Lucerne, 8 Cabbage (Hybrid 4), 9 Onions- second quality, 10 Pepper- variety Sombork, 11 Spinach- variety Matador, 12 Beans- second quality, 13 Tomatoes- variety Arleta, 14 Cucumber- variety Cornishon, 15 Watermelon– is domestic product, 16 Leek, 17 Garlic, 18 Potatoes- variety Condor, 19 Apple –variety Ida red, 20 Pear-variety autochthones, 21.Plums–variety Stenley, 22 Chestnuts – domestic product, 23 Grapes-variety Hamburg, 24 Live weight per 1kg for bulls and heifers aged 18-22 months domestic pedigree, 25 Live weight per 1kg for pigs aged 10-12 months domestic pedigree, 26 Live weight per 1kg for sheep domestic pedigree (white, mug) aged older than 12 months, 27 Hens– domestic (18 weeks old), 28 Milk –price for 1litre cow milk with 3.2% fat, 29 Honey domestic product, 30 Price for 30 pieces of eggs, first class of quality.



## Methodology

Price indices in this publication have been calculated according standards for price statistics in European Union. The project for calculating these prices and price indices was conducted in the frame of the project of “Improving agro monetary statistics” in cooperation with Statistic Sweden and with financial support by Sida (Swedish International Development Cooperation Agency).

Prices have been collected since November, 2003 and are collected in seven regions: Peja, Pristina, Prizren, Ferizaj, Gjilan, Gjakova, and Mitrovica regions. Prices are collected around the 15<sup>th</sup> in every month.

Prices are collected for 64 products and measures prices that farmers receive for the production that are sold outside the sector.

Preliminary weights to calculate aggregated indices are mainly based on agriculture household survey 2002. In the future these weights should be obtained from the Economic Accounts for Agriculture (EAA).

Base month for the index calculations is November 2003 (Nov 2003=100).

### Calculation of elementary Price Index

Calculations of elementary indices are in general done by using following formula, with un-weighted arithmetic mean price.

$$R_i^t = \frac{\frac{1}{n} \sum P_{ij}^t}{\frac{1}{n} \sum P_{ij}^o} \cdot 100$$

$R_i^t$  – Elementary index for month t and product i

P – Collected price

i – Product i

j – Price j recorded for product (in general price for region)

t – Observed month

0 – Base month

### Calculation of aggregated Price Index

Calculating aggregated index for total Output or subgroups of Output Index is done using following formula.

$$I^t = \sum R_i^t \cdot \frac{w_i^0}{\sum w_i^0}$$

$I^t$  – Aggregated index for period t

$w_i^0$  – Weighting factor in base period for product i

I – Product i

t – Observed month

0 – Base month

## Questionnaire

Target definition
-------------------

Item number	Item name	Quantity	Unit
Price Collector		Collection place/ Company	
Date			
Price			

<p>Enumerators notes</p> <ul style="list-style-type: none"> <li>- Detailed description of specific variety selected for re-pricing</li> <li>- Changes in the detailed description, date for changes</li> <li>- Treatment of quality change when description changed (information of over-lap price observation, alt. valuation of quality change)</li> </ul>
--



## Statistical Office of Kosovo, a brief description

**The Statistical Office of Kosovo (SOK)** is a professional office operating since 1948. The SOK passed through some of the historic phases and it has been structured by the state rule of that time. SOK restarted its work on August 2, 1999, as an independent and professional office working in the frames of the Ministry of Public Services (MPS). SOK is financed by the Kosovo Consolidated Budget and by donors for the various projects.

**The Statistical Office of Kosovo** acts pursuant the UNMIK Regulation 2001/14 that entered into force on July 2, 2001. A medium-term Master Plan is being developed for the statistical system of Kosovo compatible with the European Statistics.

**The SOK Organization Structure;** composes of four departments for production of statistics (Department of Economic Statistics and National Accounts, Department of Population Statistics, Department of Social Statistics and Department of Agricultural and Environment Statistics), seven Regional Offices (located in Gjakova, Gjilan, Mitrovica, Peja, Prizren, Pristina and Ferizaj), two support departments (Department of Methodology and Information Technology, and Department of Administration), as well as the Office of the Population Census.

Total number employees is 134, of them 96 (71.6%) within the SOK offices whilst 38 (28.4%) in regional offices.

There is also a support and cooperation with the international institutions.

The Statistical Office of Kosovo covers Kosovo entirely. For implementation of the surveys in the field, the SOK uses appropriate sampling and methodology approach. In the collection of the reports from the reporting units, the SOK engages professionals, technicians, administrators and civilians from the local offices and regional field population census.

Recently, a team of national and international experts is working in the project of the population census.

**SOK Mission** is to fulfill the needs of the users with the reliable statistical data and with regular analyses in order to support and provide government departments with the proper information for decision-making process including other users as well.

- **Address: Statistical Office of Kosovo, Str. Zenel Salihu, No. 4, Pristina**
- **Telephones:**  
**Head-Quarters: +381 (0) 38 235 111**  
**Director: +381 (0) 38 235 545 or +381 (0) 38 504 604 ext. 6572**
- **Fax: +381 (0) 38 235 033**
- **E-mail: [agriculture@ks-gov.net](mailto:agriculture@ks-gov.net)**
- **Web-site: [www.ks-gov.net/esk](http://www.ks-gov.net/esk)**