



Republika e Kosovës  
Republika Kosova-Republic of Kosovo  
*Qeveria - Vlada - Government*  
Zyra e Kryeministrit -Ured Premijera -Office of the Prime Minister  
*Agjencia e Statistikave të Kosovës - Agencija za Statistike Kosova - Kosovo Agency of Statistics*

## Series 2: Agriculture and Environment Statistics

# Output Price Index and Prices in Agriculture 2005 -2013 (2005 =100 )



## Preface

Kosovo Agency of Statistics respectively Agriculture and Environment Statistics Department started to collect data on prices for agriculture products in November 2003. In the beginning, prices were collected for a limited number of items. At the moment prices for 64 different items concerning agricultural output are collected. The plan for the future is to both increase the number of products and also to complement it with an Input Price Index.

This is the twentieth publication on Output Price Index and Average Absolute Prices for agriculture products produced by Kosovo Agency of Statistics (KAS). In this publication, Output Price Index and prices for some major agriculture products are presented.

KAS is grateful to the Swedish International Development Cooperation Agency (SIDA) for their support of build up the agro monetary statistics system. KAS also is grateful for their corporation of all co-workers at the regional offices, other respondents of data collection as: agriculture farms, industrial and trade enterprises etc.

Especially grateful to Swedish price statistics experts Mr. Anders Grönvall, Mr. Jimmie Enhall and Statistics Sweden Long-term consultant Mrs. Milva Ekonomi and others who directly or indirectly assisted on finalisation of this publication.

Suggestions, proposals and remarks for this publication are welcome and can be sent to:  
E- mail: [agriculture@ks-gov.net](mailto:agriculture@ks-gov.net)

This publication was prepared by following personnel:

Bajrush Qevani – Director of department,  
Violeta Arifi – Gashi – Chief of division  
Kademsha Bajramaga – Officer

February 2014

Chief Executive KAS  
Isa Krasniqi

## Abbreviations and Acronyms

KAS	Kosovo Agency of Statistics
API	Agriculture Price Index
EU	European Union
SIDA	Swedish International Development Cooperation Agency

## Key to symbols

.	Not applicable
‰	Promile

In the tables where figures have (weight) have been rounded to the nearest final digit might be a slight discrepancy in the sum.

## Contents

	Page
Output price index for agricultural products.....	5
Annual agricultural output price Index 2005-2013 (Kosovo disposition), (2005=100).....	6
Annual agricultural output price Index 2005-2013 (EU disposition), (2005=100).....	7
Quarterly agricultural output price index (EU disposition) 2005 - 2013, (2005=100).....	8
Monthly agricultural output price index (Kosovo disposition) 2005 – 2013, (2005=100).....	13
Annual price Kosovo 2005 – 2013.....	23
Methodology.....	26
Questionnaire .....	28



## Output Price Index for agriculture products

The publication includes data from January 2005 to December 2013. This publication is based on collection of prices for domestic products in Kosovo. The price collection was carried out at markets, farms and other places where prices on agriculture products are available.

The products which make up the base for the Output Price Index are divided into two main groups: Crop- and Animal Output. Within Crop Output, prices are collected under the following groups; Cereals, Forage plants, Vegetables, Potatoes and Fruits. Within Animal Output, prices are collected for Animals and Animal Product. For Animals prices are collected for four categories; Cattle, Sheep, Pigs and Poultry. These prices are based on the live weight of the animals. Within animal products prices are collected for Milk, Eggs and Honey. All prices are calculated in Euro and the measurement unit is in kg, liter and piece.

### The annual index changes in 2013 compared with 2012 (change in %)

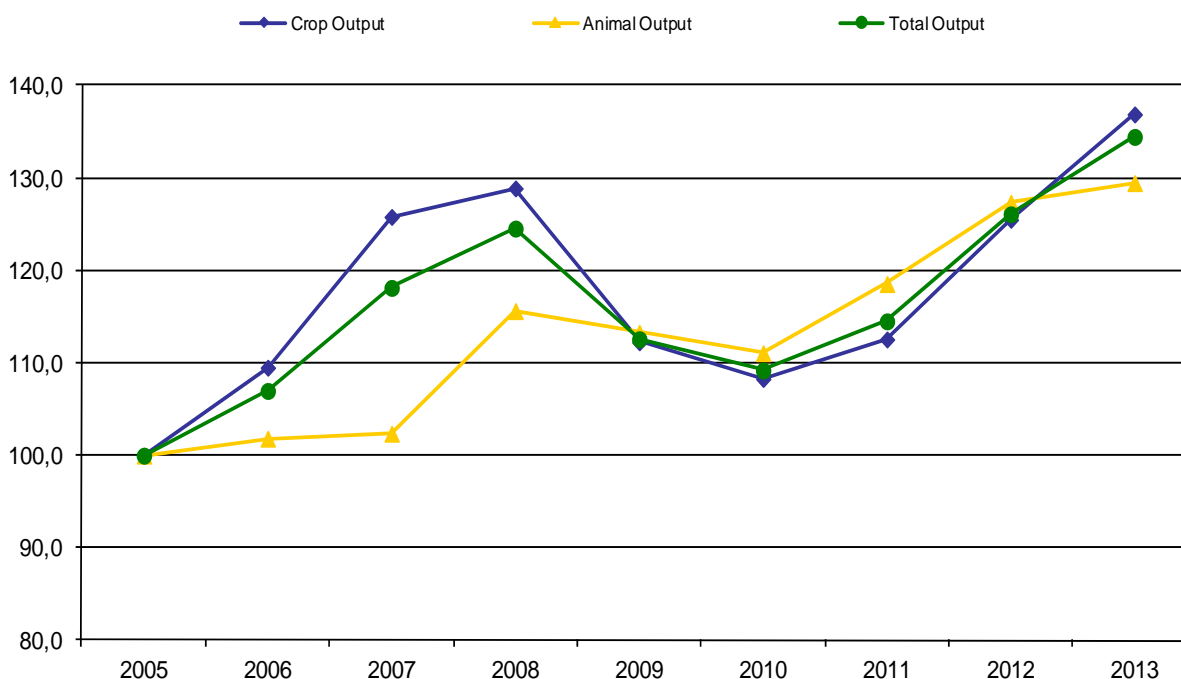
The annual index in 2013 has increased with 9.1 % for Animal Output compared to the same period 2012. The index for Crop Output has increased with 1.7 % between 2012 and 2013. Total Output Index has also increased during the period with 6.6 %.

### The annual index changes in 2013 compared with 2005 (change in %)

The annual index in 2013 has increased with 36.9 % for Animal Output compared with 2005. The index for Crop Output has increased with 29.5 % between 2005 and 2013. Total Output Index has also increased with 34.5 % compared with 2005.

Figure 1. Shows Annual Output Price Index from 2005-2013 for Total Output as well as for Crop- and Animal Output (2005 = 100).

**Figure 1: Annual Output Price Index 2005-2013 (2005=100)**



## Annual Agricultural Output Price Index 2005-2013 (Kosovo disposition), (2005=100)

Table 1: Annual Agricultural Output Price Index 2005-2013(Kosovo disposition), (2005 = 100)

Item Code	Groups	Weight in %	Weight 1000 Euro	2005	2006	2007	2008	2009	2010	2011	2012	2013
<b>0 1</b>	<b>Cereals</b>	<b>88</b>	<b>8.018</b>	<b>100,0</b>	<b>102,2</b>	<b>158,2</b>	<b>188,4</b>	<b>123,8</b>	<b>132,0</b>	<b>170,0</b>	<b>178,3</b>	<b>166,4</b>
0 1.1	Wheat	45	4.105	100,0	108,5	178,1	193,2	120,7	134,6	174,3	184,2	152,0
0 1.3	Barley	10	904	100,0	107,4	166,0	226,9	169,5	134,3	163,5	185,4	205,2
0 1.5	Maize	31	2.818	100,0	91,0	125,3	167,8	113,2	128,4	167,1	169,3	174,1
0 1.9	Other cereals	2	191	100,0	108,5	178,1	206,0	129,2	118,7	151,0	151,5	177,4
<b>0 3</b>	<b>Forage plants</b>	<b>63</b>	<b>5.726</b>	<b>100,0</b>	<b>103,7</b>	<b>143,5</b>	<b>180,1</b>	<b>129,1</b>	<b>115,9</b>	<b>128,0</b>	<b>160,9</b>	<b>159,6</b>
0 3.1	Fodder maize	0	36	100,0	90,4	121,4	168,4	107,8	127,9	174,6	170,4	177,4
0 3.9	Other forage plants	62	5.690	100,0	103,8	143,6	180,2	129,2	115,9	127,7	160,9	159,4
03.9.1	Hay	29	2.682	100,0	108,3	154,1	189,6	138,5	112,7	130,6	170,2	172,4
03.9.2	Straw	14	1.234	100,0	119,9	147,9	186,0	124,5	133,3	139,0	165,3	152,0
03.9.9	Other forage plants ;others	19	1.774	100,0	85,7	124,9	161,8	118,3	108,4	115,5	143,7	145,1
<b>0 4</b>	<b>Vegetables</b>	<b>351</b>	<b>31.942</b>	<b>100,0</b>	<b>105,1</b>	<b>115,1</b>	<b>106,1</b>	<b>102,6</b>	<b>97,3</b>	<b>92,1</b>	<b>104,0</b>	<b>111,9</b>
0 4.1	Fresh vegetables	351	31.942	100,0	105,1	115,1	106,1	102,6	97,3	92,1	104,0	111,9
0 4.1.2	Tomatoes	30	2.716	100,0	116,7	124,2	104,9	112,6	113,8	92,4	131,3	103,1
0 4.1.9	Other fresh vegetables	321	29.226	100,0	104,0	114,2	106,2	101,6	95,8	92,1	101,4	112,7
0 4.1.9.9	Pepper	211	19.234	100,0	103,7	105,7	101,0	94,9	85,5	83,3	87,5	106,0
0 4.1.9.1	Cabbage	24	2.209	100,0	97,4	170,1	100,1	107,0	100,8	97,7	136,5	97,5
0 4.1.9.4	Cucumbers	11	1.009	100,0	118,0	138,0	125,1	116,9	119,9	104,8	118,5	118,0
0 4.1.9.6	Onions	19	1.729	100,0	117,7	124,6	119,2	119,6	147,8	127,3	110,7	138,2
0 4.1.9.7	Beans	31	2.825	100,0	107,2	124,0	146,8	136,6	116,3	126,5	160,1	170,1
0 4.1.9.9.9	Water melon	10	936	100,0	78,2	98,0	91,5	93,6	104,4	85,8	109,5	96,6
0 4.1.9.9.9.9	Other fresh vegetable;other	14	1.283	100,0	102,6	103,0	83,4	85,7	101,1	85,4	88,9	86,8
<b>0 5</b>	<b>Potatoes</b>	<b>121</b>	<b>10.989</b>	<b>100,0</b>	<b>134,1</b>	<b>129,4</b>	<b>132,4</b>	<b>127,0</b>	<b>126,2</b>	<b>127,1</b>	<b>139,6</b>	<b>185,7</b>
<b>0 6</b>	<b>Fruits</b>	<b>50</b>	<b>4.567</b>	<b>100,0</b>	<b>101,3</b>	<b>113,4</b>	<b>111,3</b>	<b>103,4</b>	<b>90,9</b>	<b>100,5</b>	<b>105,0</b>	<b>113,9</b>
0 6.1	Fresh fruits	23	2.108	100,0	103,6	116,3	114,1	109,8	103,0	112,2	127,7	119,4
0 6.1.1	Apple	8	704	100,0	101,7	111,9	120,2	104,5	98,4	101,8	110,9	106,6
0 6.1.2	Pears	3	248	100,0	125,6	143,3	137,8	134,3	125,3	137,4	145,3	146,2
0 6.1.9	Other fresh fruit	13	1.156	100,0	100,1	113,2	105,3	107,7	101,1	113,0	134,2	121,5
0 6.1.9.2	Plums	5	491	100,0	98,0	103,2	87,8	92,6	95,0	85,4	89,7	81,8
0 6.1.9.4	Nuts and dried fruit	3	306	100,0	104,4	124,7	119,7	117,2	100,7	153,4	192,2	171,9
0 6.1.9.9	Other fresh fruits; other	4	359	100,0	99,2	117,1	116,9	120,2	109,7	116,4	145,4	132,8
0 6.4.1	Desert grapes	15	1.354	100,0	98,7	114,0	110,6	107,0	102,4	120,4	118,8	110,2
0 6.4.9	Wine grapes	12	1.105	100,0	100,0	107,0	107,0	86,7	53,7	53,7	48,6	44,9
<b>10</b>	<b>Crop Output</b>	<b>673</b>	<b>61.241</b>	<b>100,0</b>	<b>109,5</b>	<b>125,8</b>	<b>128,9</b>	<b>112,3</b>	<b>108,3</b>	<b>112,6</b>	<b>125,5</b>	<b>136,9</b>
<b>11</b>	<b>Animals</b>	<b>188</b>	<b>17.086</b>	<b>100,0</b>	<b>101,9</b>	<b>100,2</b>	<b>112,1</b>	<b>119,8</b>	<b>118,9</b>	<b>124,8</b>	<b>132,8</b>	<b>137,0</b>
11.1	Cattle	140	12.739	100,0	103,7	100,5	111,2	119,4	116,9	123,3	132,1	134,8
11.2	Pigs	9	791	100,0	99,8	104,1	128,0	133,4	134,6	131,6	136,4	157,2
11.4	Sheep	34	3.129	100,0	94,9	96,8	107,8	113,6	117,4	122,2	128,5	134,0
11.5	Poultry	4	345	100,0	106,1	109,9	149,2	160,4	172,3	188,6	191,7	199,4
11.9	Other animals	1	82	100,0	101,9	100,2	112,1	119,8	118,9	124,8	132,8	137,0
<b>12</b>	<b>Animal Products</b>	<b>140</b>	<b>12.722</b>	<b>100,0</b>	<b>101,7</b>	<b>105,3</b>	<b>120,3</b>	<b>104,5</b>	<b>100,5</b>	<b>110,1</b>	<b>120,0</b>	<b>119,4</b>
12.1	Milk	79	7.194	100,0	105,4	106,0	124,2	113,3	105,6	110,6	116,1	120,9
12.2	Eggs	52	4.760	100,0	96,6	105,7	118,2	91,5	92,0	108,4	125,4	115,9
12.9	Other animal products	8	768	100,0	99,5	96,1	97,9	103,6	106,5	116,4	122,4	126,8
<b>13</b>	<b>Animal Output</b>	<b>327</b>	<b>29.808</b>	<b>100,0</b>	<b>101,8</b>	<b>102,4</b>	<b>115,6</b>	<b>113,3</b>	<b>111,1</b>	<b>118,5</b>	<b>127,3</b>	<b>129,5</b>
<b>14</b>	<b>Total Output</b>	<b>1.000</b>	<b>91.049</b>	<b>100,0</b>	<b>107,0</b>	<b>118,1</b>	<b>124,6</b>	<b>112,6</b>	<b>109,2</b>	<b>114,5</b>	<b>126,1</b>	<b>134,5</b>

## Annual Agricultural Output Price Index 2006-2013(EU disposition), (2005=100)

Table 2: Annual Agricultural Output Price Index 2006-2013(EU disposition), (2005 =100)

Description	Weight in 1000 Euro	2006	2007	2008	2009	2010	2011	2012	2013
<b>CEREALS (including seeds)</b>	<b>8.018</b>	<b>102,2</b>	<b>158,2</b>	<b>188,4</b>	<b>123,8</b>	<b>132,0</b>	<b>170,0</b>	<b>178,3</b>	<b>166,4</b>
Wheat and spelt	4.105	108,5	178,1	193,2	120,7	134,6	174,3	184,2	152,0
Soft wheat and spelt	4.105	108,5	178,1	193,2	120,7	134,6	174,3	184,2	152,0
Rye and meslin	7	108,5	178,1	236,6	158,0	160,0	191,2	196,0	205,6
Barley	904	107,4	166,0	226,9	169,5	134,3	163,5	185,4	205,2
Feed barley	475	107,4	166,0	226,9	169,5	134,3	163,5	185,4	205,2
Malting barley	430	107,4	166,0	226,9	169,5	134,3	163,5	185,4	205,2
Oats and summer cereal mixtures	184	108,5	178,1	204,7	128,0	117,0	149,4	149,7	176,2
Grain maize	2.818	91,0	125,3	167,8	113,2	128,4	167,1	169,3	174,1
<b>FORAGE PLANTS</b>	<b>5.726</b>	<b>103,7</b>	<b>143,5</b>	<b>180,1</b>	<b>129,1</b>	<b>115,9</b>	<b>128,0</b>	<b>160,9</b>	<b>159,6</b>
Fodder maize	36	90,4	121,4	168,4	107,8	127,9	174,6	170,4	177,4
Other forage plants	5690	103,8	143,6	180,2	129,2	115,9	127,7	160,9	159,4
Hay	2682	108,3	154,1	189,6	138,5	112,7	130,6	170,2	172,4
Straw	1234	119,9	147,9	186,0	124,5	133,3	139,0	165,3	152,0
Other forage plants: others	1774	85,7	124,9	161,8	118,3	108,4	115,5	143,7	145,1
<b>VEGETABLES AND HORTICULTURAL PRODUCTS</b>	<b>31.942</b>	<b>105,1</b>	<b>115,1</b>	<b>106,1</b>	<b>102,6</b>	<b>97,3</b>	<b>92,1</b>	<b>104,0</b>	<b>111,9</b>
Fresh vegetables	31.942	105,1	115,1	106,1	102,6	97,3	92,1	104,0	111,9
Cauliflower	102	100,0	100,0	88,8	89,7	99,0	91,3	133,2	116,7
Tomatoes	2.716	116,7	124,2	104,9	112,6	113,8	92,4	131,3	103,1
Other fresh vegetables	29.124	104,0	114,3	106,3	101,7	95,8	92,1	101,3	112,7
Cabbage	2.209	97,4	170,1	100,1	107,0	100,8	97,7	136,5	97,5
Lettuce	32	100,0	100,0	74,7	93,0	93,6	99,8	102,5	109,1
Spinach	52	95,3	111,4	105,7	117,5	132,5	125,8	133,2	147,3
Cucumbers	1.009	118,0	138,0	125,1	116,9	119,9	104,8	118,5	118,0
Carrots	45	100,0	100,0	80,0	82,4	78,3	84,9	87,2	89,7
Onions	1.729	117,7	124,6	119,2	119,6	147,8	127,3	110,7	138,2
Green beans	2.825	107,2	124,0	146,8	136,6	116,3	126,5	160,1	170,1
Peas	20	100,0	100,0	100,0	87,7	92,9	95,7	107,5	111,3
Other fresh vegetables: other	21.201	102,5	105,2	99,7	94,3	87,1	83,4	88,2	104,3
<b>POTATOES (including seeds)</b>	<b>10.989</b>	<b>134,1</b>	<b>129,4</b>	<b>132,4</b>	<b>127,0</b>	<b>126,2</b>	<b>127,1</b>	<b>139,6</b>	<b>185,7</b>
Potatoes for consumption	10.989	134,1	129,4	132,4	127,0	126,2	127,1	139,6	185,7
<b>FRUITS</b>	<b>4.567</b>	<b>101,3</b>	<b>113,4</b>	<b>111,3</b>	<b>103,4</b>	<b>90,9</b>	<b>100,5</b>	<b>105,0</b>	<b>113,6</b>
Fresh fruit (excluding citrus fruit and grapes)	2.108	103,6	116,3	114,1	109,8	103,0	112,2	127,7	118,8
Dessert apples	704	101,7	111,9	120,2	104,5	98,4	101,8	110,9	106,6
Dessert pears	248	125,6	143,3	137,8	134,3	125,3	137,4	145,3	146,2
Peaches	10	100,0	108,2	105,6	94,3	100,2	82,5	104,0	113,8
Other fresh fruit, nuts and dried fruit	1.145	100,1	113,3	105,3	107,8	101,1	113,3	134,4	120,4
Cherries	69	100,0	108,3	123,7	151,4	121,7	129,1	161,5	144,0
Plums	491	98,0	103,2	87,8	92,6	95,0	85,4	89,7	79,0
Strawberries	168	98,2	135,0	132,8	125,7	118,2	130,8	162,6	139,0
Nuts and dried fruit	306	104,4	124,7	119,7	117,2	100,7	153,4	192,2	171,9
Nuts	306	104,4	124,7	119,7	117,2	100,7	153,4	192,2	171,9
Other fresh fruit: other	112	100,0	96,6	89,9	95,4	90,4	90,1	113,6	118,3
Grapes	2.458	99,3	110,9	108,9	97,9	80,5	90,4	85,6	109,2
Dessert grapes	1.354	98,7	114,0	110,6	107,0	102,4	120,4	118,8	110,2
Other grapes, fresh	1.105	100,0	107,0	107,0	86,7	53,7	53,7	44,9	107,9
<b>CROP OUTPUT (010000 TO 090000), including fruits (060000) and vegetables (040000)</b>	<b>61.241</b>	<b>109,5</b>	<b>125,8</b>	<b>128,9</b>	<b>112,3</b>	<b>108,3</b>	<b>112,6</b>	<b>125,5</b>	<b>136,9</b>
<b>CROP OUTPUT (010000 TO 090000), excluding fruits (060000) and vegetables (040000)</b>	<b>24.732</b>	<b>116,7</b>	<b>142,0</b>	<b>161,6</b>	<b>126,4</b>	<b>125,7</b>	<b>141,2</b>	<b>157,1</b>	<b>173,4</b>
<b>ANIMALS</b>	<b>17.086</b>	<b>101,9</b>	<b>100,2</b>	<b>112,1</b>	<b>119,8</b>	<b>118,9</b>	<b>124,8</b>	<b>132,8</b>	<b>137,0</b>
Cattle	12.739	103,7	100,5	111,2	119,4	116,9	123,3	132,1	134,8
Cattle excluding calves	10.927	103,7	100,5	111,2	119,4	116,9	123,3	132,1	134,8
Calves	1.812	103,7	100,5	111,2	119,4	116,9	123,3	132,1	134,8
Pigs	791	99,8	104,1	128,0	133,4	134,6	131,6	136,4	157,2
Equines	82	101,9	100,2	112,1	119,8	118,9	124,8	132,8	137,0
Sheep and goats	3.129	94,9	96,8	107,8	113,6	117,4	122,2	128,5	134,0
Poultry	345	106,1	109,9	149,2	160,4	172,3	188,6	191,7	199,4
Chickens	319	106,1	109,9	149,2	160,4	172,3	188,6	191,7	199,4
Other poultry	25	106,1	109,9	149,2	160,4	172,3	188,6	191,7	199,4
<b>ANIMAL PRODUCTS</b>	<b>12.722</b>	<b>101,7</b>	<b>105,3</b>	<b>120,3</b>	<b>104,5</b>	<b>100,5</b>	<b>110,1</b>	<b>120,0</b>	<b>119,4</b>
Milk	7.194	105,4	106,0	124,2	113,3	105,6	110,6	116,1	120,9
Cows' milk	7.194	105,4	106,0	124,2	113,3	105,6	110,6	116,1	120,9
Eggs	4.760	96,6	105,7	118,2	91,5	92,0	108,4	125,4	115,9
Other animal products	768	99,5	96,1	97,9	103,6	106,5	116,4	122,4	126,8
<b>ANIMAL OUTPUT (110000+120000)</b>	<b>29.808</b>	<b>101,8</b>	<b>102,4</b>	<b>115,6</b>	<b>113,3</b>	<b>111,1</b>	<b>118,5</b>	<b>127,3</b>	<b>129,5</b>
<b>AGRICULTURAL GOODS OUTPUT (100000+130000), including fruits (060000) and vegetables (040000)</b>	<b>91.049</b>	<b>107,0</b>	<b>118,1</b>	<b>124,6</b>	<b>112,6</b>	<b>109,2</b>	<b>114,5</b>	<b>126,1</b>	<b>134,5</b>
<b>AGRICULTURAL GOODS OUTPUT (101000+130000), excluding fruits (060000) and vegetables (040000)</b>	<b>54.540</b>	<b>108,6</b>	<b>120,3</b>	<b>136,5</b>	<b>119,2</b>	<b>117,7</b>	<b>128,8</b>	<b>140,8</b>	<b>149,4</b>



**Quarterly Agricultural Output Price Index 2005 - 2013(EU disposition), (2005=100)****Table 3: Quarterly Agricultural Output Price Index (EU disposition) 2005, (2005=100)**

API code	Description	Q1-2005	Q2-2005	Q3-2005	Q4-2005
<b>010000</b>	<b>CEREALS (including seeds)</b>	<b>108,2</b>	<b>99,5</b>	<b>99,3</b>	<b>95,2</b>
011000	Wheat and spelt	104,9	100,2	98,4	98,8
011100	Soft wheat and spelt	104,9	100,2	98,4	98,8
012000	Rye and meslin	104,9	100,2	98,4	98,8
013000	Barley	103,8	99,7	98,1	98,4
013200	Malting barley	103,8	99,7	98,1	98,4
014000	Oats and summer cereal mixtures	104,9	100,2	98,4	98,8
015000	Grain maize	113,1	98,8	103,3	90,4
<b>030000</b>	<b>FORAGE PLANTS</b>	<b>112,4</b>	<b>103,4</b>	<b>94,1</b>	<b>98,5</b>
031000	Fodder maize	113,8	95,2	105,8	90,6
032000	Fodder root crops (including forage beet)	.	.	.	.
039000	Other forage plants	112,4	103,5	94,0	98,6
<b>040000</b>	<b>VEGETABLES AND HORTICULTURAL PRODUCTS</b>	<b>98,6</b>	<b>128,5</b>	<b>95,1</b>	<b>98,2</b>
041000	Fresh vegetables	98,6	128,5	95,1	98,2
041100	Cauliflower	.	.	100,0	100,0
041200	Tomatoes	.	160,7	74,1	108,0
041900	Other fresh vegetables	98,6	121,4	97,2	97,7
042000	Plants and flowers	.	.	.	.
<b>050000</b>	<b>POTATOES (including seeds)</b>	<b>93,8</b>	<b>126,0</b>	<b>98,8</b>	<b>97,0</b>
051000	Potatoes for consumption	93,8	126,0	98,8	97,0
<b>060000</b>	<b>FRUITS</b>	<b>101,7</b>	<b>95,9</b>	<b>100,4</b>	<b>100,0</b>
061000	Fresh fruit (excluding citrus fruit and grapes)	101,7	95,9	101,3	99,4
061100	Dessert apples	89,5	.	108,2	101,7
061200	Dessert pears	174,0	.	89,4	88,9
061300	Peaches	.	100,0	100,0	.
061900	Other fresh fruit, nuts and dried fruit	101,4	95,8	100,5	102,0
062000	Citrus fruit	.	.	.	.
063000	Tropical fruit	.	.	.	.
064000	Grapes	.	.	99,3	100,2
<b>100000</b>	<b>CROP OUTPUT (010000 TO 090000), including fruits (060000) and vegetables (040000)</b>	<b>101,6</b>	<b>119,3</b>	<b>96,1</b>	<b>97,8</b>
<b>101000</b>	<b>CROP OUTPUT (010000 TO 090000), excluding fruits (060000) and vegetables (040000)</b>	<b>102,5</b>	<b>110,3</b>	<b>97,6</b>	<b>96,7</b>
<b>110000</b>	<b>ANIMALS</b>	<b>97,7</b>	<b>96,7</b>	<b>102,2</b>	<b>103,4</b>
111000	Cattle	97,2	96,1	102,6	104,0
111100	Cattle excluding calves	97,2	96,1	102,6	104,0
111200	Calves	.	.	.	.
112000	Pigs	95,2	101,3	101,3	102,2
113000	Equines	.	.	.	.
114000	Sheep and goats	100,1	97,2	101,0	101,6
115000	Poultry	97,9	100,0	101,1	101,1
115100	Chickens	97,9	100,0	101,1	101,1
115900	Other poultry	.	.	.	.
119000	Other animals	.	.	.	.
<b>120000</b>	<b>ANIMAL PRODUCTS</b>	<b>100,7</b>	<b>101,5</b>	<b>99,1</b>	<b>98,7</b>
121000	Milk	102,2	100,5	98,8	98,4
121100	Cows' milk	102,2	100,5	98,8	98,4
121900	Other milk types	.	.	.	.
122000	Eggs	98,7	103,3	99,3	98,7
129000	Other animal products	98,5	100,5	100,5	100,5
<b>130000</b>	<b>ANIMAL OUTPUT (110000+120000)</b>	<b>99,0</b>	<b>98,7</b>	<b>100,9</b>	<b>101,4</b>
<b>140000</b>	<b>AGRICULTURAL GOODS OUTPUT (100000+130000), including fruits (060000) and vegetables (040000)</b>	<b>100,3</b>	<b>108,9</b>	<b>97,1</b>	<b>98,8</b>
<b>141000</b>	<b>AGRICULTURAL GOODS OUTPUT (101000+130000), excluding fruits (060000) and vegetables (040000)</b>	<b>100,4</b>	<b>102,2</b>	<b>99,2</b>	<b>98,9</b>

Table 4: Quarterly Agricultural Output Price Index (EU disposition) 2006, (2005=100)

API code	Description	Q1-2006	Q2-2006	Q3-2006	Q4-2006
<b>010000</b>	<b>CEREALS (including seeds)</b>	<b>95,0</b>	<b>96,6</b>	<b>104,0</b>	<b>108,2</b>
011000	Wheat and spelt	100,5	106,4	107,4	116,0
011100	Soft wheat and spelt	100,5	106,4	107,4	116,0
012000	Rye and meslin	100,5	106,4	107,4	116,0
013000	Barley	100,7	106,0	106,8	115,9
013200	Malting barley	100,7	106,0	106,8	115,9
014000	Oats and summer cereal mixtures	100,5	106,4	107,4	116,0
015000	Grain maize	87,0	84,1	88,9	97,7
<b>030000</b>	<b>FORAGE PLANTS</b>	<b>99,8</b>	<b>102,9</b>	<b>100,3</b>	<b>111,1</b>
031000	Fodder maize	87,3	84,7	89,7	97,9
032000	Fodder root crops (including forage beet)	.	.	.	.
039000	Other forage plants	99,9	103,1	100,4	111,2
<b>040000</b>	<b>VEGETABLES AND HORTICULTURAL PRODUCTS</b>	<b>115,9</b>	<b>146,9</b>	<b>97,5</b>	<b>101,1</b>
041000	Fresh vegetables	115,9	146,9	97,5	101,1
041100	Cauliflower	.	.	100,0	100,0
041200	Tomatoes	.	188,8	92,8	92,2
041900	Other fresh vegetables	115,9	137,6	98,0	101,5
042000	Plants and flowers	.	.	.	.
<b>050000</b>	<b>POTATOES (including seeds)</b>	<b>113,6</b>	<b>143,4</b>	<b>126,5</b>	<b>149,7</b>
051000	Potatoes for consumption	113,6	143,4	126,5	149,7
<b>060000</b>	<b>FRUITS</b>	<b>107,5</b>	<b>94,6</b>	<b>99,1</b>	<b>102,0</b>
061000	Fresh fruit (excluding citrus fruit and grapes)	107,5	94,6	103,9	103,7
061100	Dessert apples	105,7	.	109,9	95,7
061200	Dessert pears	120,4	.	106,2	134,3
061300	Peaches	.	100,0	100,0	.
061900	Other fresh fruit, nuts and dried fruit	106,4	94,6	101,7	97,6
062000	Citrus fruit	.	.	.	.
063000	Tropical fruit	.	.	.	.
064000	Grapes	.	.	93,4	101,3
<b>100000</b>	<b>CROP OUTPUT (010000 TO 090000), including fruits (060000) and vegetables (040000)</b>	<b>107,0</b>	<b>131,1</b>	<b>101,9</b>	<b>113,5</b>
<b>101000</b>	<b>CROP OUTPUT (010000 TO 090000), excluding fruits (060000) and vegetables (040000)</b>	<b>104,4</b>	<b>115,5</b>	<b>112,5</b>	<b>129,0</b>
<b>110000</b>	<b>ANIMALS</b>	<b>103,2</b>	<b>102,1</b>	<b>101,4</b>	<b>100,9</b>
111000	Cattle	104,7	104,1	103,2	102,6
111100	Cattle excluding calves	104,7	104,1	103,2	102,6
111200	Calves	.	.	.	.
112000	Pigs	103,3	100,5	97,7	97,7
113000	Equines	.	.	.	.
114000	Sheep and goats	96,8	93,8	94,8	94,2
115000	Poultry	107,8	104,9	104,6	107,0
115100	Chickens	107,8	104,9	104,6	107,0
115900	Other poultry	.	.	.	.
119000	Other animals	.	.	.	.
<b>120000</b>	<b>ANIMAL PRODUCTS</b>	<b>102,3</b>	<b>96,1</b>	<b>99,2</b>	<b>109,3</b>
121000	Milk	106,7	105,0	104,5	105,2
121100	Cows' milk	106,7	105,0	104,5	105,2
121900	Other milk types	.	.	.	.
122000	Eggs	95,7	82,2	91,3	117,2
129000	Other animal products	101,2	99,8	98,5	98,5
<b>130000</b>	<b>ANIMAL OUTPUT (110000+120000)</b>	<b>102,8</b>	<b>99,6</b>	<b>100,5</b>	<b>104,5</b>
<b>140000</b>	<b>AGRICULTURAL GOODS OUTPUT (100000+130000), including fruits (060000) and vegetables (040000)</b>	<b>104,8</b>	<b>115,1</b>	<b>101,6</b>	<b>110,9</b>
<b>141000</b>	<b>AGRICULTURAL GOODS OUTPUT (101000+130000), excluding fruits (060000) and vegetables (040000)</b>	<b>103,5</b>	<b>104,4</b>	<b>106,7</b>	<b>117,4</b>

Table 5: Quarterly Agricultural Output Price Index (EU disposition) 2007, (2005=100)

API code	Description	Q1-2007	Q2-2007	Q3-2007	Q4-2007
<b>010000</b>	<b>CEREALS (including seeds)</b>	<b>111,6</b>	<b>111,0</b>	<b>150,6</b>	<b>218,3</b>
011000	Wheat and spelt	126,4	126,6	156,2	259,1
011100	Soft wheat and spelt	126,4	126,6	156,2	259,1
012000	Rye and meslin	126,4	126,6	156,2	259,1
013000	Barley	126,1	126,1	153,5	258,2
013200	Malting barley	126,1	126,1	153,5	258,2
014000	Oats and summer cereal mixtures	126,4	126,6	156,2	259,1
015000	Grain maize	90,7	91,2	126,5	163,6
<b>030000</b>	<b>FORAGE PLANTS</b>	<b>114,5</b>	<b>121,2</b>	<b>131,0</b>	<b>190,8</b>
031000	Fodder maize	90,8	92,0	120,1	164,0
032000	Fodder root crops (including forage beet)	.	.	.	.
039000	Other forage plants	114,6	121,5	131,0	191,0
<b>040000</b>	<b>VEGETABLES AND HORTICULTURAL PRODUCTS</b>	<b>109,7</b>	<b>128,9</b>	<b>107,7</b>	<b>126,9</b>
041000	Fresh vegetables	109,7	128,9	107,7	126,9
041100	Cauliflower	.	.	100,0	100,0
041200	Tomatoes	.	159,4	107,5	137,0
041900	Other fresh vegetables	109,7	122,2	107,7	126,5
042000	Plants and flowers	.	.	.	.
<b>050000</b>	<b>POTATOES (including seeds)</b>	<b>124,3</b>	<b>164,9</b>	<b>123,7</b>	<b>126,7</b>
051000	Potatoes for consumption	124,3	164,9	123,7	126,7
<b>60000</b>	<b>FRUITS</b>	<b>112,4</b>	<b>118,3</b>	<b>109,0</b>	<b>115,3</b>
061000	Fresh fruit (excluding citrus fruit and grapes)	112,4	118,3	111,1	121,9
061100	Dessert apples	94,9	.	119,6	117,4
061200	Dessert pears	186,0	.	114,1	146,0
061300	Peaches	.	100,0	110,0	.
061900	Other fresh fruit, nuts and dried fruit	125,1	118,4	108,0	115,1
062000	Citrus fruit	.	.	.	.
063000	Tropical fruit	.	.	.	.
064000	Grapes	.	.	106,6	112,3
<b>100000</b>	<b>CROP OUTPUT (010000 TO 090000), including fruits (060000) and vegetables (040000)</b>	<b>115,9</b>	<b>130,7</b>	<b>115,1</b>	<b>143,5</b>
<b>101000</b>	<b>CROP OUTPUT (010000 TO 090000), excluding fruits (060000) and vegetables (040000)</b>	<b>117,9</b>	<b>133,6</b>	<b>133,7</b>	<b>168,3</b>
<b>110000</b>	<b>ANIMALS</b>	<b>99,7</b>	<b>99,0</b>	<b>100,6</b>	<b>101,3</b>
111000	Cattle	101,7	100,0	99,9	100,4
111100	Cattle excluding calves	101,7	100,0	99,9	100,4
111200	Calves	.	.	.	.
112000	Pigs	97,7	98,7	110,5	109,7
113000	Equines	.	.	.	.
114000	Sheep and goats	91,4	93,9	100,3	101,7
115000	Poultry	107,6	108,2	110,0	113,7
115100	Chickens	107,6	108,2	110,0	113,7
115900	Other poultry	.	.	.	.
119000	Other animals	.	.	.	.
<b>120000</b>	<b>ANIMAL PRODUCTS</b>	<b>105,6</b>	<b>98,9</b>	<b>102,2</b>	<b>114,6</b>
121000	Milk	101,6	101,4	105,7	115,5
121100	Cows' milk	101,6	101,4	105,7	115,5
121900	Other milk types	.	.	.	.
122000	Eggs	112,8	95,7	98,2	116,2
129000	Other animal products	98,5	95,7	94,4	95,7
<b>130000</b>	<b>ANIMAL OUTPUT (110000+120000)</b>	<b>102,2</b>	<b>99,0</b>	<b>101,3</b>	<b>107,0</b>
<b>140000</b>	<b>AGRICULTURAL GOODS OUTPUT (100000+130000), including fruits (060000) and vegetables (040000)</b>	<b>108,9</b>	<b>114,6</b>	<b>112,2</b>	<b>133,2</b>
<b>141000</b>	<b>AGRICULTURAL GOODS OUTPUT (101000+130000), excluding fruits (060000) and vegetables (040000)</b>	<b>108,7</b>	<b>109,4</b>	<b>118,1</b>	<b>139,3</b>

Table 6: Quarterly Agricultural Output Price Index (EU disposition) 2008, (2005=100)

API code	Description	Q1-2008	Q2-2008	Q3-2008	Q4-2008
<b>010000</b>	<b>CEREALS (including seeds)</b>	<b>216,1</b>	<b>207,9</b>	<b>182,0</b>	<b>166,0</b>
011000	Wheat and spelt	243,8	232,8	179,1	164,9
011100	Soft wheat and spelt	243,8	232,8	179,1	164,9
012000	Rye and meslin	240,3	253,0	230,0	237,5
013000	Barley	243,1	216,0	221,8	226,7
013200	Malting barley	243,1	216,0	221,8	226,7
014000	Oats and summer cereal mixtures	239,0	215,0	194,4	192,2
015000	Grain maize	177,0	183,9	169,7	153,6
<b>030000</b>	<b>FORAGE PLANTS</b>	<b>204,4</b>	<b>205,5</b>	<b>165,6</b>	<b>170,9</b>
031000	Fodder maize	176,8	179,0	169,0	154,0
032000	Fodder root crops (including forage beet)	.	.	.	.
039000	Other forage plants	204,5	205,8	165,6	171,0
<b>040000</b>	<b>VEGETABLES AND HORTICULTURAL PRODUCTS</b>	<b>147,1</b>	<b>154,9</b>	<b>89,0</b>	<b>115,4</b>
041000	Fresh vegetables	147,1	154,9	89,0	115,4
041100	Cauliflower	.	.	84,6	105,8
041200	Tomatoes	.	175,7	65,9	158,1
041900	Other fresh vegetables	147,1	150,3	91,4	113,5
042000	Plants and flowers	.	.	.	.
<b>050000</b>	<b>POTATOES (including seeds)</b>	<b>131,0</b>	<b>152,1</b>	<b>128,4</b>	<b>130,9</b>
051000	Potatoes for consumption	131,0	152,1	128,4	130,9
<b>060000</b>	<b>FRUITS</b>	<b>132,0</b>	<b>123,7</b>	<b>105,6</b>	<b>110,8</b>
061000	Fresh fruit (excluding citrus fruit and grapes)	132,0	123,7	103,9	114,0
061100	Dessert apples	118,0	.	127,7	117,7
061200	Dessert pears	200,3	.	108,4	136,4
061300	Peaches	.	138,1	98,5	.
061900	Other fresh fruit, nuts and dried fruit	137,9	123,6	95,8	99,1
062000	Citrus fruit	.	.	.	.
063000	Tropical fruit	.	.	.	.
064000	Grapes	.	.	107,6	109,4
<b>100000</b>	<b>CROP OUTPUT (010000 TO 090000), including fruits (060000) and vegetables (040000)</b>	<b>167,4</b>	<b>168,1</b>	<b>108,5</b>	<b>129,9</b>
<b>101000</b>	<b>CROP OUTPUT (010000 TO 090000), excluding fruits (060000) and vegetables (040000)</b>	<b>175,2</b>	<b>186,8</b>	<b>154,7</b>	<b>149,8</b>
<b>110000</b>	<b>ANIMALS</b>	<b>100,9</b>	<b>107,1</b>	<b>117,2</b>	<b>123,3</b>
111000	Cattle	99,0	105,4	117,1	123,2
111100	Cattle excluding calves	99,0	105,4	117,1	123,2
111200	Calves	.	.	.	.
112000	Pigs	119,2	124,1	132,6	136,0
113000	Equines	.	.	.	.
114000	Sheep and goats	99,8	105,3	109,8	116,4
115000	Poultry	137,4	146,5	151,4	161,4
115100	Chickens	137,4	146,5	151,4	161,4
115900	Other poultry	.	.	.	.
119000	Other animals	.	.	.	.
<b>120000</b>	<b>ANIMAL PRODUCTS</b>	<b>121,8</b>	<b>116,2</b>	<b>120,0</b>	<b>123,4</b>
121000	Milk	121,9	128,5	122,3	124,0
121100	Cows' milk	121,9	128,5	122,3	124,0
121900	Other milk types	.	.	.	.
122000	Eggs	125,5	100,3	120,2	126,6
129000	Other animal products	97,8	98,5	97,8	97,8
<b>130000</b>	<b>ANIMAL OUTPUT (110000+120000)</b>	<b>109,8</b>	<b>110,9</b>	<b>118,4</b>	<b>123,3</b>
<b>140000</b>	<b>AGRICULTURAL GOODS OUTPUT (100000+130000), including fruits (060000) and vegetables (040000)</b>	<b>137,8</b>	<b>139,1</b>	<b>110,5</b>	<b>128,0</b>
<b>141000</b>	<b>AGRICULTURAL GOODS OUTPUT (101000+130000), excluding fruits (060000) and vegetables (040000)</b>	<b>136,8</b>	<b>133,9</b>	<b>137,1</b>	<b>137,3</b>

Table 7: Quarterly Agricultural Output Price Index (EU disposition) 2009, (2005=100)

API code	Description	Q1-2009	Q2-2009	Q3-2009	Q4-2009
<b>010000</b>	<b>CEREALS (including seeds)</b>	<b>154,2</b>	<b>125,9</b>	<b>113,2</b>	<b>111,1</b>
011000	Wheat and spelt	154,5	142,0	109,7	105,8
011100	Soft wheat and spelt	154,5	142,0	109,7	105,8
012000	Rye and meslin	190,1	148,5	152,7	146,8
013000	Barley	205,2	163,0	156,6	153,4
013200	Malting barley	205,2	163,0	156,6	153,4
014000	Oats and summer cereal mixtures	176,9	121,5	108,9	123,2
015000	Grain maize	137,6	96,4	103,9	107,8
<b>030000</b>	<b>FORAGE PLANTS</b>	<b>167,1</b>	<b>135,2</b>	<b>118,2</b>	<b>116,9</b>
031000	Fodder maize	138,7	97,0	104,7	108,1
032000	Fodder root crops (including forage beet)	.	.	.	.
039000	Other forage plants	167,2	135,6	118,2	117,0
<b>040000</b>	<b>VEGETABLES AND HORTICULTURAL PRODUCTS</b>	<b>128,0</b>	<b>125,2</b>	<b>96,3</b>	<b>101,8</b>
041000	Fresh vegetables	128,0	125,2	96,3	101,8
041100	Cauliflower	.	.	91,3	83,3
041200	Tomatoes	.	171,2	92,2	97,5
041900	Other fresh vegetables	128,0	115,1	96,7	102,0
042000	Plants and flowers	.	.	.	.
<b>050000</b>	<b>POTATOES (including seeds)</b>	<b>118,9</b>	<b>140,8</b>	<b>127,8</b>	<b>127,0</b>
051000	Potatoes for consumption	118,9	140,8	127,8	127,0
<b>060000</b>	<b>FRUITS</b>	<b>112,2</b>	<b>123,4</b>	<b>104,2</b>	<b>100,1</b>
061000	Fresh fruit (excluding citrus fruit and grapes)	112,2	123,4	104,0	110,0
061100	Dessert apples	98,0	.	109,4	105,6
061200	Dessert pears	180,1	.	115,9	132,1
061300	Peaches	.	105,6	91,9	.
061900	Other fresh fruit, nuts and dried fruit	119,2	123,6	101,1	104,2
062000	Citrus fruit	.	.	.	.
063000	Tropical fruit	.	.	.	.
064000	Grapes	.	.	104,4	95,7
<b>100000</b>	<b>CROP OUTPUT (010000 TO 090000), including fruits (060000) and vegetables (040000)</b>	<b>136,8</b>	<b>129,0</b>	<b>103,6</b>	<b>109,6</b>
<b>101000</b>	<b>CROP OUTPUT (010000 TO 090000), excluding fruits (060000) and vegetables (040000)</b>	<b>140,7</b>	<b>133,9</b>	<b>120,8</b>	<b>120,0</b>
<b>110000</b>	<b>ANIMALS</b>	<b>122,7</b>	<b>124,1</b>	<b>118,6</b>	<b>113,8</b>
111000	Cattle	122,2	123,6	118,9	112,8
111100	Cattle excluding calves	122,2	123,6	118,9	112,8
111200	Calves	.	.	.	.
112000	Pigs	141,3	140,1	131,2	121,0
113000	Equines	.	.	.	.
114000	Sheep and goats	115,9	118,1	110,0	110,5
115000	Poultry	161,6	159,7	154,7	165,5
115100	Chickens	161,6	159,7	154,7	165,5
115900	Other poultry	.	.	.	.
119000	Other animals	.	.	.	.
<b>120000</b>	<b>ANIMAL PRODUCTS</b>	<b>117,0</b>	<b>100,3</b>	<b>101,7</b>	<b>99,1</b>
121000	Milk	122,3	114,3	110,5	105,9
121100	Cows' milk	122,3	114,3	110,5	105,9
121900	Other milk types	.	.	.	.
122000	Eggs	111,6	78,3	88,0	88,1
129000	Other animal products	100,5	104,6	104,6	104,6
<b>130000</b>	<b>ANIMAL OUTPUT (110000+120000)</b>	<b>120,3</b>	<b>113,9</b>	<b>111,4</b>	<b>107,6</b>
<b>140000</b>	<b>AGRICULTURAL GOODS OUTPUT (100000+130000), including fruits (060000) and vegetables (040000)</b>	<b>128,3</b>	<b>121,4</b>	<b>105,2</b>	<b>109,0</b>
<b>141000</b>	<b>AGRICULTURAL GOODS OUTPUT (101000+130000), excluding fruits (060000) and vegetables (040000)</b>	<b>128,7</b>	<b>120,0</b>	<b>116,2</b>	<b>114,1</b>

**Table 8 ; Quarterly Agricultural Output Price Index (EU disposition) 2010, (2005=100)**

API code	Description	Q1-2010	Q2-2010	Q3-2010	Q4-2010
<b>010000</b>	<b>CEREALS (including seeds)</b>	<b>109,5</b>	<b>108,3</b>	<b>135,9</b>	<b>154,7</b>
011000	Wheat and spelt	109,6	108,0	135,3	159,0
011100	Soft wheat and spelt	109,6	108,0	135,3	159,0
012000	Rye and meslin	153,5	139,2	160,6	170,5
013000	Barley	130,6	125,7	133,1	147,7
013200	Malting barley	130,6	125,7	133,1	147,7
014000	Oats and summer cereal mixtures	128,3	108,3	110,0	121,8
015000	Grain maize	102,0	100,7	143,9	152,8
<b>030000</b>	<b>FORAGE PLANTS</b>	<b>126,8</b>	<b>117,8</b>	<b>102,9</b>	<b>126,0</b>
031000	Fodder maize	102,4	101,4	140,9	146,7
032000	Fodder root crops (including forage beet)	.	.	.	.
039000	Other forage plants	126,9	118,0	102,6	125,9
<b>040000</b>	<b>VEGETABLES AND HORTICULTURAL PRODUCTS</b>	<b>137,7</b>	<b>145,0</b>	<b>87,8</b>	<b>89,6</b>
041000	Fresh vegetables	137,7	145,0	87,8	89,6
041100	Cauliflower	.	.	106,7	68,3
041200	Tomatoes	.	145,4	96,4	137,0
041900	Other fresh vegetables	137,7	144,9	86,8	87,5
042000	Plants and flowers	.	.	.	.
<b>050000</b>	<b>POTATOES (including seeds)</b>	<b>115,9</b>	<b>163,5</b>	<b>127,4</b>	<b>120,2</b>
051000	Potatoes for consumption	115,9	163,5	127,4	120,2
<b>060000</b>	<b>FRUITS</b>	<b>81,8</b>	<b>113,7</b>	<b>98,7</b>	<b>85,8</b>
061000	Fresh fruit (excluding citrus fruit and grapes)	81,8	113,7	101,8	108,5
061100	Dessert apples	91,3	.	111,8	95,7
061200	Dessert pears	53,1	.	122,6	141,2
061300	Peaches	.	95,3	101,3	.
061900	Other fresh fruit, nuts and dried fruit	69,7	113,8	96,1	106,6
062000	Citrus fruit	.	.	.	.
063000	Tropical fruit	.	.	.	.
064000	Grapes	.	.	95,1	75,6
<b>100000</b>	<b>CROP OUTPUT (010000 TO 090000), including fruits (060000) and vegetables (040000)</b>	<b>119,0</b>	<b>137,8</b>	<b>98,3</b>	<b>107,8</b>
<b>101000</b>	<b>CROP OUTPUT (010000 TO 090000), excluding fruits (060000) and vegetables (040000)</b>	<b>115,8</b>	<b>131,2</b>	<b>123,1</b>	<b>132,3</b>
<b>110000</b>	<b>ANIMALS</b>	<b>114,8</b>	<b>117,9</b>	<b>119,6</b>	<b>123,4</b>
111000	Cattle	113,1	115,3	117,8	121,2
111100	Cattle excluding calves	113,1	115,3	117,8	121,2
111200	Calves	113,1	115,3	117,8	121,2
112000	Pigs	129,4	136,3	136,0	136,9
113000	Equines	.	.	.	.
114000	Sheep and goats	112,1	117,6	117,1	122,7
115000	Poultry	167,3	173,3	170,3	178,1
115100	Chickens	167,3	173,3	170,3	178,1
115900	Other poultry	.	.	.	.
119000	Other animals	.	.	.	.
<b>120000</b>	<b>ANIMAL PRODUCTS</b>	<b>98,2</b>	<b>96,5</b>	<b>99,8</b>	<b>107,6</b>
121000	Milk	103,8	103,3	103,5	111,7
121100	Cows' milk	103,8	103,3	103,5	111,7
121900	Other milk types	.	.	.	.
122000	Eggs	88,3	84,7	93,5	101,5
129000	Other animal products	106,7	106,7	105,3	107,4
<b>130000</b>	<b>ANIMAL OUTPUT (110000+120000)</b>	<b>107,7</b>	<b>108,8</b>	<b>111,2</b>	<b>116,7</b>
<b>140000</b>	<b>AGRICULTURAL GOODS OUTPUT (100000+130000), including fruits (060000) and vegetables (040000)</b>	<b>113,2</b>	<b>123,1</b>	<b>101,0</b>	<b>110,3</b>
<b>141000</b>	<b>AGRICULTURAL GOODS OUTPUT (101000+130000), excluding fruits (060000) and vegetables (040000)</b>	<b>111,0</b>	<b>115,5</b>	<b>117,3</b>	<b>124,9</b>

Table 9 ; Quarterly Agricultural Output Price Index (EU disposition) 2011, (2005=100)

API code	Description	Q1-2011	Q2-2011	Q3-2011	Q4-2011
<b>010000</b>	<b>CEREALS (including seeds)</b>	<b>171,2</b>	<b>174,1</b>	<b>167,1</b>	<b>169,9</b>
011000	Wheat and spelt	190,2	192,8	164,4	170,8
011100	Soft wheat and spelt	190,2	192,8	164,4	170,8
012000	Rye and meslin	195,6	187,6	194,9	184,7
013000	Barley	158,6	158,9	161,1	175,3
013200	Malting barley	158,6	158,9	161,1	175,3
014000	Oats and summer cereal mixtures	151,3	151,3	143,7	154,9
015000	Grain maize	155,4	166,5	184,8	168,6
<b>030000</b>	<b>FORAGE PLANTS</b>	<b>138,6</b>	<b>146,7</b>	<b>114,7</b>	<b>129,4</b>
031000	Fodder maize	155,0	173,5	186,2	169,0
032000	Fodder root crops (including forage beet)	.	.	.	.
039000	Other forage plants	138,5	146,5	114,3	129,2
<b>040000</b>	<b>VEGETABLES AND HORTICULTURAL PRODUCTS</b>	<b>125,8</b>	<b>137,5</b>	<b>80,1</b>	<b>92,7</b>
041000	Fresh vegetables	125,8	137,5	80,1	92,7
041100	Cauliflower	.	.	90,0	96,7
041200	Tomatoes	.	150,2	69,3	92,2
041900	Other fresh vegetables	125,8	134,7	81,1	92,7
042000	Plants and flowers	.	.	.	.
<b>050000</b>	<b>POTATOES (including seeds)</b>	<b>164,1</b>	<b>195,3</b>	<b>102,7</b>	<b>105,7</b>
051000	Potatoes for consumption	164,1	195,3	102,7	105,7
<b>060000</b>	<b>FRUITS</b>	<b>110,0</b>	<b>123,4</b>	<b>107,6</b>	<b>93,6</b>
061000	Fresh fruit (excluding citrus fruit and grapes)	110,0	123,4	99,9	120,8
061100	Dessert apples	93,4	.	114,2	100,4
061200	Dessert pears	133,7	.	121,9	144,3
061300	Peaches	.	95,3	79,7	.
061900	Other fresh fruit, nuts and dried fruit	142,5	123,6	92,9	131,6
062000	Citrus fruit	.	.	.	.
063000	Tropical fruit	.	.	.	.
064000	Grapes	.	.	116,9	81,4
<b>100000</b>	<b>CROP OUTPUT (010000 TO 090000), including fruits (060000) and vegetables (040000)</b>	<b>151,8</b>	<b>153,5</b>	<b>94,2</b>	<b>109,5</b>
<b>101000</b>	<b>CROP OUTPUT (010000 TO 090000), excluding fruits (060000) and vegetables (040000)</b>	<b>161,7</b>	<b>174,4</b>	<b>125,2</b>	<b>130,7</b>
<b>110000</b>	<b>ANIMALS</b>	<b>122,0</b>	<b>122,2</b>	<b>127,7</b>	<b>127,4</b>
111000	Cattle	120,0	120,4	126,1	126,8
111100	Cattle excluding calves	120,0	120,4	126,1	126,8
111200	Calves	120,0	120,4	126,1	126,8
112000	Pigs	132,6	129,4	135,6	128,6
113000	Equines	122,0	122,2	127,7	127,4
114000	Sheep and goats	120,2	120,4	126,0	122,2
115000	Poultry	186,5	187,4	186,6	194,1
115100	Chickens	186,5	187,4	186,6	194,1
115900	Other poultry	186,5	187,4	186,6	194,1
119000	Other animals	.	.	.	.
<b>120000</b>	<b>ANIMAL PRODUCTS</b>	<b>108,3</b>	<b>109,2</b>	<b>110,3</b>	<b>112,8</b>
121000	Milk	110,4	110,7	108,5	113,0
121100	Cows' milk	110,4	110,7	108,5	113,0
121900	Other milk types	.	.	.	.
122000	Eggs	104,0	105,3	112,3	112,0
129000	Other animal products	114,9	119,0	115,6	116,2
<b>130000</b>	<b>ANIMAL OUTPUT (110000+120000)</b>	<b>116,1</b>	<b>116,6</b>	<b>120,3</b>	<b>121,1</b>
<b>140000</b>	<b>AGRICULTURAL GOODS OUTPUT (100000+130000), including fruits (060000) and vegetables (040000)</b>	<b>133,4</b>	<b>134,8</b>	<b>99,7</b>	<b>112,8</b>
<b>141000</b>	<b>AGRICULTURAL GOODS OUTPUT (101000+130000), excluding fruits (060000) and vegetables (040000)</b>	<b>134,9</b>	<b>134,1</b>	<b>122,8</b>	<b>126,2</b>

**Table 10 ; Quarterly Agricultural Output Price Index (EU disposition) 2012, (2005=100)**

API code	Description	Q1-2012	Q2-2012	Q3-2012	Q4-2012
<b>010000</b>	<b>CEREALS (including seeds)</b>	<b>170,7</b>	<b>169,5</b>	<b>179,5</b>	<b>186,5</b>
011000	Wheat and spelt	175,1	173,9	182,4	196,0
011100	Soft wheat and spelt	175,1	173,9	182,4	196,0
012000	Rye and meslin	203,8	198,0	191,2	196,6
013000	Barley	180,3	187,5	180,0	193,7
013200	Malting barley	180,3	187,5	180,0	193,7
014000	Oats and summer cereal mixtures	158,0	161,7	142,0	150,3
015000	Grain maize	163,6	158,1	174,1	176,4
<b>030000</b>	<b>FORAGE PLANTS</b>	<b>150,7</b>	<b>137,3</b>	<b>152,6</b>	<b>191,3</b>
031000	Fodder maize	164,6	158,4	175,8	176,7
032000	Fodder root crops (including forage beet)	.	.	.	.
039000	Other forage plants	150,7	137,3	152,6	191,3
<b>040000</b>	<b>VEGETABLES AND HORTICULTURAL PRODUCTS</b>	<b>133,5</b>	<b>154,5</b>	<b>90,8</b>	<b>105,4</b>
041000	Fresh vegetables	133,5	154,5	90,8	105,4
041100	Cauliflower	.	.	146,7	79,2
041200	Tomatoes	.	180,5	115,7	110,7
041900	Other fresh vegetables	133,5	148,8	88,0	105,3
042000	Plants and flowers	.	.	.	.
<b>050000</b>	<b>POTATOES (including seeds)</b>	<b>113,9</b>	<b>105,7</b>	<b>143,7</b>	<b>161,1</b>
051000	Potatoes for consumption	113,9	105,7	143,7	161,1
<b>060000</b>	<b>FRUITS</b>	<b>125,5</b>	<b>151,7</b>	<b>101,5</b>	<b>100,4</b>
061000	Fresh fruit (excluding citrus fruit and grapes)	125,5	151,7	107,4	139,8
061100	Dessert apples	97,9	.	126,2	110,5
061200	Dessert pears	174,0	.	119,1	149,7
061300	Peaches	.	110,4	102,6	.
061900	Other fresh fruit, nuts and dried fruit	175,4	152,0	99,9	167,0
062000	Citrus fruit	.	.	.	.
063000	Tropical fruit	.	.	.	.
064000	Grapes	.	.	94,4	82,6
<b>100000</b>	<b>CROP OUTPUT (010000 TO 090000), including fruits (060000) and vegetables (040000)</b>	<b>138,8</b>	<b>146,8</b>	<b>110,1</b>	<b>135,3</b>
<b>101000</b>	<b>CROP OUTPUT (010000 TO 090000), excluding fruits (060000) and vegetables (040000)</b>	<b>141,1</b>	<b>137,3</b>	<b>156,9</b>	<b>175,0</b>
<b>110000</b>	<b>ANIMALS</b>	<b>130,3</b>	<b>130,8</b>	<b>135,4</b>	<b>134,8</b>
111000	Cattle	130,3	129,4	134,9	133,7
111100	Cattle excluding calves	130,3	129,4	134,9	133,7
111200	Calves	130,3	129,4	134,9	133,7
112000	Pigs	124,5	141,9	141,1	137,9
113000	Equines	130,3	130,8	135,4	134,8
114000	Sheep and goats	125,0	127,5	129,7	131,8
115000	Poultry	188,3	190,3	191,4	196,7
115100	Chickens	188,3	190,3	191,4	196,7
115900	Other poultry	188,3	190,3	191,4	196,7
119000	Other animals	.	.	.	.
<b>120000</b>	<b>ANIMAL PRODUCTS</b>	<b>120,8</b>	<b>115,4</b>	<b>119,3</b>	<b>124,3</b>
121000	Milk	114,3	113,8	115,9	120,4
121100	Cows' milk	114,3	113,8	115,9	120,4
121900	Other milk types	.	.	.	.
122000	Eggs	130,6	117,2	124,0	129,8
129000	Other animal products	120,3	119,0	123,1	127,2
<b>130000</b>	<b>ANIMAL OUTPUT (110000+120000)</b>	<b>126,2</b>	<b>124,2</b>	<b>128,5</b>	<b>130,3</b>
<b>140000</b>	<b>AGRICULTURAL GOODS OUTPUT (100000+130000), including fruits (060000) and vegetables (040000)</b>	<b>132,3</b>	<b>135,4</b>	<b>113,9</b>	<b>133,9</b>
<b>141000</b>	<b>AGRICULTURAL GOODS OUTPUT (101000+130000), excluding fruits (060000) and vegetables (040000)</b>	<b>132,3</b>	<b>128,2</b>	<b>143,2</b>	<b>153,9</b>



Table 11; Quarterly Agricultural Output Price Index (EU disposition) 2013, (2005=100)

API code	Description	Q1-2013	Q2-2013	Q3-2013	Q4-2013
<b>010000</b>	<b>CEREALS (including seeds)</b>	<b>193,4</b>	<b>196,1</b>	<b>148,6</b>	<b>150,3</b>
011000	Wheat and spelt	195,2	196,6	133,9	132,3
011100	Soft wheat and spelt	195,2	196,6	133,9	132,3
012000	Rye and meslin	208,4	209,5	206,4	201,3
013000	Barley	208,3	211,1	199,1	202,5
013200	Malting barley	208,3	211,1	199,1	202,5
014000	Oats and summer cereal mixtures	176,3	221,3	180,0	156,1
015000	Grain maize	187,9	188,0	172,6	159,1
<b>030000</b>	<b>FORAGE PLANTS</b>	<b>191,5</b>	<b>164,8</b>	<b>148,9</b>	<b>151,4</b>
031000	Fodder maize	188,4	188,8	178,2	160,8
032000	Fodder root crops (including forage beet)	.	.	.	.
039000	Other forage plants	191,5	164,6	148,7	151,3
<b>040000</b>	<b>VEGETABLES AND HORTICULTURAL PRODUCTS</b>	<b>140,4</b>	<b>162,1</b>	<b>95,7</b>	<b>121,0</b>
041000	Fresh vegetables	140,4	162,1	95,7	121,0
041100	Cauliflower	.	.	120,8	100,0
041200	Tomatoes	.	115,9	92,8	129,1
041900	Other fresh vegetables	140,4	172,3	95,8	120,7
042000	Plants and flowers	.	.	.	.
<b>050000</b>	<b>POTATOES (including seeds)</b>	<b>172,2</b>	<b>220,1</b>	<b>190,8</b>	<b>179,3</b>
051000	Potatoes for consumption	172,2	220,1	190,8	179,3
<b>060000</b>	<b>FRUITS</b>	<b>139,4</b>	<b>135,7</b>	<b>107,0</b>	<b>112,2</b>
061000	Fresh fruit (excluding citrus fruit and grapes)	139,4	135,7	103,4	120,4
061100	Dessert apples	108,1	.	116,0	101,4
061200	Dessert pears	190,5	.	129,9	143,6
061300	Peaches	.	147,2	106,5	.
061900	Other fresh fruit, nuts and dried fruit	197,5	135,6	96,1	130,0
062000	Citrus fruit	.	.	.	.
063000	Tropical fruit	.	.	.	.
064000	Grapes	.	.	111,3	108,5
<b>100000</b>	<b>CROP OUTPUT (010000 TO 090000), including fruits (060000) and vegetables (040000)</b>	<b>172,4</b>	<b>176,5</b>	<b>116,3</b>	<b>139,0</b>
<b>101000</b>	<b>CROP OUTPUT (010000 TO 090000), excluding fruits (060000) and vegetables (040000)</b>	<b>183,4</b>	<b>196,3</b>	<b>166,6</b>	<b>164,7</b>
<b>110000</b>	<b>ANIMALS</b>	<b>134,9</b>	<b>135,5</b>	<b>137,6</b>	<b>139,8</b>
111000	Cattle	133,1	132,7	135,4	137,8
111100	Cattle excluding calves	133,1	132,7	135,4	137,8
111200	Calves	133,1	132,7	135,4	137,8
112000	Pigs	150,1	163,1	157,7	158,0
113000	Equines	134,9	135,5	137,6	139,8
114000	Sheep and goats	131,5	132,3	135,3	136,8
115000	Poultry	197,3	204,4	194,2	201,8
115100	Chickens	197,3	204,4	194,2	201,8
115900	Other poultry	197,3	204,4	194,2	201,8
119000	Other animals	.	.	.	.
<b>120000</b>	<b>ANIMAL PRODUCTS</b>	<b>125,4</b>	<b>116,7</b>	<b>116,9</b>	<b>118,6</b>
121000	Milk	124,4	122,5	118,3	118,7
121100	Cows' milk	124,4	122,5	118,3	118,7
121900	Other milk types	.	.	.	.
122000	Eggs	126,9	107,0	112,7	116,9
129000	Other animal products	125,1	123,1	129,9	129,2
<b>130000</b>	<b>ANIMAL OUTPUT (110000+120000)</b>	<b>130,8</b>	<b>127,5</b>	<b>128,8</b>	<b>130,8</b>
<b>140000</b>	<b>AGRICULTURAL GOODS OUTPUT (100000+130000), including fruits (060000) and vegetables (040000)</b>	<b>151,0</b>	<b>151,6</b>	<b>118,9</b>	<b>136,7</b>
<b>141000</b>	<b>AGRICULTURAL GOODS OUTPUT (101000+130000), excluding fruits (060000) and vegetables (040000)</b>	<b>152,5</b>	<b>148,3</b>	<b>148,3</b>	<b>148,7</b>

## Monthly Agriculture Output Price Index 2005-2013 (2005=100)

Table 12: Monthly Agricultural Output Price Index (Kosovo disposition) Jan-Jun 2005, (2005=100)

Item code	Groups	Weight in %	Weight 1000 Euro	2005					
				Jan	Feb	Mar	Apr	Maj	Jun
<b>0 1</b>	<b>Cereals</b>	<b>88</b>	<b>8.018</b>	<b>114,7</b>	<b>103,0</b>	<b>103,7</b>	<b>102,0</b>	<b>99,3</b>	<b>96,8</b>
0 1.1	Wheat	45	4.105	112,9	98,8	100,8	100,8	99,8	99,8
0 1.3	Barley	10	904	112,5	98,4	100,4	100,4	99,4	99,4
0 1.5	Maize	31	2.818	118,2	110,9	109,3	104,4	98,7	91,3
0 1.9	Other cereals	2	191	112,9	98,8	100,8	100,8	99,8	99,8
<b>0 3</b>	<b>Forage plants</b>	<b>63</b>	<b>5.726</b>	<b>113,5</b>	<b>113,3</b>	<b>109,3</b>	<b>110,3</b>	<b>104,5</b>	<b>96,0</b>
0 3.1	Fodder maize	0	36	118,5	111,1	109,5	104,6	98,9	91,5
0 3.9	Other forage plants	62	5.690	113,5	113,3	109,3	110,3	104,6	96,0
0 3.9.1	Hay	29	2.682	120,8	116,6	113,9	115,2	101,4	88,9
0 3.9.2	Straw	14	1.234	119,8	140,2	117,3	112,2	107,1	96,9
0 3.9.9	Other forage plants ;others	19	1.774	100,2	100,2	100,2	100,2	101,2	104,4
<b>0 4</b>	<b>Vegetables</b>	<b>351</b>	<b>31.942</b>	<b>100,3</b>	<b>99,1</b>	<b>95,1</b>	<b>92,7</b>	<b>122,2</b>	<b>137,7</b>
0 4.1	Fresh vegetables	351	31.942	100,3	99,1	95,1	92,7	122,2	137,7
0 4.1.2	Tomatoes	30	2.716	.	.	.	.	181,8	139,7
0 4.1.9	Other fresh vegetables	321	29.226	100,3	99,1	95,1	92,7	100,7	137,4
0 4.1.9	Pepper	211	19.234	.	.	.	.	100,0	142,4
0 4.1.9.1	Cabbage	24	2.209	104,0	116,0	.	.	.	236,0
0 4.1.9.4	Cucumbers	11	1.009	.	.	.	.	118,5	86,9
0 4.1.9.6	Onions	19	1.729	96,6	94,7	94,7	94,7	94,7	105,1
0 4.1.9.7	Beans	31	2.825	100,9	92,5	94,4	90,7	93,4	90,7
0 4.1.9	Water melon	10	936	.	.	.	.	.	.
0 4.1.9.9.9	Other fresh vegetable;other	14	1.283	99,2	99,1	106,0	96,1	90,2	101,8
<b>0 5</b>	<b>Potatoes</b>	<b>121</b>	<b>10.989</b>	<b>95,2</b>	<b>93,4</b>	<b>92,1</b>	<b>92,1</b>	<b>122,8</b>	<b>155,0</b>
<b>0 6</b>	<b>Fruits</b>	<b>50</b>	<b>4.567</b>	<b>110,9</b>	<b>85,4</b>	<b>100,0</b>	<b>100,0</b>	<b>107,2</b>	<b>95,9</b>
0 6.1	Fresh fruits	23	2.108	110,9	85,4	100,0	100,0	107,2	95,9
0 6.1.1	Apple	8	704	95,1	83,6	.	.	.	.
0 6.1.2	Pears	3	248	174,0	.	.	.	.	.
0 6.1.9	Other fresh fruit	13	1.156	101,9	100,0	100,0	100,0	107,2	95,9
0 6.1.9.2	Plums	5	491	.	.	.	.	.	.
0 6.1.9.4	Nuts and dried fruit	3	306	102,0	100,0	100,0	100,0	100,0	100,0
0 6.1.9.9	Other fresh fruits; other	4	359	100,0	100,0	.	.	107,8	95,8
0 6.4	Desert grapes	15	1.354	.	.	.	.	.	.
0 6.4.9	Wine grapes	12	1.105	.	.	.	.	.	.
<b>10</b>	<b>Crop Output</b>	<b>673</b>	<b>61.241</b>	<b>103,3</b>	<b>98,9</b>	<b>97,4</b>	<b>96,0</b>	<b>116,6</b>	<b>128,4</b>
<b>11</b>	<b>Animals</b>	<b>188</b>	<b>17.086</b>	<b>98,2</b>	<b>97,2</b>	<b>97,6</b>	<b>97,2</b>	<b>94,8</b>	<b>98,0</b>
11.1	Cattle	140	12.739	97,7	96,4	97,7	96,8	93,9	97,7
11.2	Pigs	9	791	94,5	94,5	96,5	100,5	101,2	102,2
11.4	Sheep	34	3.129	101,7	101,3	97,5	97,5	96,0	98,2
11.5	Poultry	4	345	96,4	97,9	99,3	99,3	99,6	101,1
11.9	Other animals	1	82	.	.	.	.	.	.
<b>12</b>	<b>Animal Products</b>	<b>140</b>	<b>12.722</b>	<b>101,7</b>	<b>99,7</b>	<b>100,6</b>	<b>102,4</b>	<b>102,5</b>	<b>99,8</b>
12.1	Milk	79	7.194	101,6	102,6	102,6	101,6	100,0	100,0
12.2	Eggs	52	4.760	102,5	95,6	98,0	104,0	106,5	99,3
12.9	Other animal products	8	768	98,5	98,5	98,5	100,5	100,5	100,5
<b>13</b>	<b>Animal Output</b>	<b>327</b>	<b>29.808</b>	<b>99,7</b>	<b>98,3</b>	<b>98,9</b>	<b>99,4</b>	<b>98,0</b>	<b>98,8</b>
<b>14</b>	<b>Total Output</b>	<b>1.000</b>	<b>91.049</b>	<b>102,1</b>	<b>98,7</b>	<b>97,9</b>	<b>97,1</b>	<b>110,5</b>	<b>118,7</b>

**Table 13: Monthly Agricultural Output Price Index (Kosovo disposition) Jul-Dec 2005, (2005 = 100)**

Item code	Groups	Weight in %	Weight 1000 Euro	2005					
				Jul	Aug	Sep	Oct	Nov	Dec
<b>0 1</b>	<b>Cereals</b>	<b>88</b>	<b>8.018</b>	<b>105,8</b>	<b>98,1</b>	<b>98,1</b>	<b>96,7</b>	<b>95,2</b>	<b>95,2</b>
0 1.1	Wheat	45	4.105	97,7	98,8	98,8	98,8	98,8	98,8
0 1.3	Barley	10	904	97,4	98,4	98,4	98,4	98,4	98,4
0 1.5	Maize	31	2.818	120,7	97,0	97,0	93,0	88,9	88,9
0 1.9	Other cereals	2	191	97,7	98,8	98,8	98,8	98,8	98,8
<b>0 3</b>	<b>Forage plants</b>	<b>63</b>	<b>5.726</b>	<b>90,5</b>	<b>95,4</b>	<b>96,0</b>	<b>95,9</b>	<b>98,4</b>	<b>102,1</b>
0 3.1	Fodder maize	0	36	120,9	97,2	97,2	93,2	89,1	89,1
0 3.9	Other forage plants	62	5.690	90,3	95,4	96,0	95,9	98,4	102,2
0 3.9.1	Hay	29	2.682	81,9	94,4	94,4	94,4	101,4	104,1
0 3.9.2	Straw	14	1.234	94,3	91,8	94,3	94,3	89,2	94,3
0 3.9.9	Other forage plants ;others	19	1.774	100,2	99,1	99,1	99,1	99,1	102,2
<b>0 4</b>	<b>Vegetables</b>	<b>351</b>	<b>31.942</b>	<b>99,7</b>	<b>91,9</b>	<b>95,7</b>	<b>99,4</b>	<b>90,3</b>	<b>101,9</b>
0 4.1	Fresh vegetables	<b>351</b>	<b>31.942</b>	<b>99,7</b>	<b>91,9</b>	<b>95,7</b>	<b>99,4</b>	<b>90,3</b>	<b>101,9</b>
0 4.1.2	Tomatoes	30	2.716	76,4	65,3	87,0	108,0	.	.
0 4.1.9	Other fresh vegetables	321	29.226	104,8	94,9	96,1	98,9	90,3	101,9
0 4.1.9	Pepper	211	19.234	108,7	91,9	95,1	98,9	.	.
0 4.1.9.1	Cabbage	24	2.209	128,0	96,0	96,0	88,0	80,0	92,0
0 4.1.9.4	Cucumbers	11	1.009	55,3	98,5	112,5	130,1	.	.
0 4.1.9.6	Onions	19	1.729	100,5	108,2	106,3	97,8	102,4	104,3
0 4.1.9.7	Beans	31	2.825	98,1	106,4	100,9	106,4	101,8	105,5
0 4.1.9	Water melon	10	936	76,6	114,5	93,1	.	.	.
0 4.1.9.9.9	Other fresh vegetable;other	14	1.283	98,0	99,9	101,1	101,2	100,9	100,3
<b>0 5</b>	<b>Potatoes</b>	<b>121</b>	<b>10.989</b>	<b>113,6</b>	<b>93,4</b>	<b>96,4</b>	<b>98,3</b>	<b>92,1</b>	<b>101,4</b>
<b>0 6</b>	<b>Fruits</b>	<b>50</b>	<b>4.567</b>	<b>100,3</b>	<b>98,3</b>	<b>99,9</b>	<b>99,6</b>	<b>100,3</b>	<b>100,3</b>
0 6.1	Fresh fruits	23	2.108	100,3	97,9	101,2	99,9	97,8	100,6
0 6.1.1	Apple	8	704	104,4	96,4	112,4	100,9	100,9	103,7
0 6.1.2	Pears	3	248	100,0	100,0	84,2	86,1	89,7	91,6
0 6.1.9	Other fresh fruit	13	1.156	99,7	98,0	98,1	103,9	98,5	101,8
0 6.1.9.2	Plums	5	491	99,5	97,5	97,5	107,7	.	.
0 6.1.9.4	Nuts and dried fruit	3	306	100,0	100,0	100,0	98,4	98,4	102,0
0 6.1.9.9	Other fresh fruits; other	4	359	100,0	100,0	100,0	100,0	100,0	100,0
0 6.4	Desert grapes	15	1.354	.	100,0	99,2	99,1	102,8	.
0 6.4.9	Wine grapes	12	1.105	.	.	.	100,0	100,0	100,0
<b>10</b>	<b>Crop Output</b>	<b>673</b>	<b>61.241</b>	<b>102,2</b>	<b>93,8</b>	<b>96,5</b>	<b>98,5</b>	<b>92,8</b>	<b>100,8</b>
<b>11</b>	<b>Animals</b>	<b>188</b>	<b>17.086</b>	<b>102,6</b>	<b>102,1</b>	<b>101,9</b>	<b>102,1</b>	<b>103,2</b>	<b>105,0</b>
11.1	Cattle	140	12.739	103,4	102,6	101,8	101,8	104,3	105,9
11.2	Pigs	9	791	101,7	101,1	101,1	101,1	102,6	102,9
11.4	Sheep	34	3.129	99,8	100,5	102,8	103,5	99,2	102,0
11.5	Poultry	4	345	101,1	101,1	101,1	101,1	101,1	101,1
11,9	Other animals	1	82	.	.	.	.	.	.
<b>12</b>	<b>Animal Products</b>	<b>140</b>	<b>12.722</b>	<b>98,4</b>	<b>99,4</b>	<b>99,4</b>	<b>98,7</b>	<b>98,7</b>	<b>98,5</b>
12.1	Milk	79	7.194	98,4	99,0	99,0	99,0	99,0	97,4
12.2	Eggs	52	4.760	98,1	99,9	99,9	98,1	98,1	99,9
12.9	Other animal products	8	768	100,5	100,5	100,5	100,5	100,5	100,5
<b>13</b>	<b>Animal Output</b>	<b>327</b>	<b>29.808</b>	<b>100,8</b>	<b>101,0</b>	<b>100,9</b>	<b>100,6</b>	<b>101,3</b>	<b>102,2</b>
<b>14</b>	<b>Total Output</b>	<b>1.000</b>	<b>91.049</b>	<b>101,7</b>	<b>96,1</b>	<b>97,9</b>	<b>99,2</b>	<b>95,6</b>	<b>101,3</b>

Table 14: Monthly Agricultural Output Price Index (Kosovo disposition) Jan-Jun 2006, (2005 = 100)

Item code	Groups	Weight in %	Weight 1000 Euro	2006					
				Jan	Feb	Mar	Apr	Maj	Jun
<b>0 1</b>	<b>Cereals</b>	<b>88</b>	<b>8.018</b>	<b>93,7</b>	<b>97,2</b>	<b>97,2</b>	<b>99,1</b>	<b>96,7</b>	<b>99,8</b>
0 1.1	Wheat	45	4.105	96,3	103,4	103,4	106,4	106,4	106,4
0 1.3	Barley	10	904	96,0	103,0	103,0	106,0	106,0	106,0
0 1.5	Maize	31	2.818	88,9	85,9	85,9	85,9	78,9	87,9
0 1.9	Other cereals	2	191	96,3	103,4	103,4	106,4	106,4	106,4
<b>0 3</b>	<b>Forage plants</b>	<b>63</b>	<b>5.726</b>	<b>102,8</b>	<b>98,6</b>	<b>96,6</b>	<b>100,3</b>	<b>101,0</b>	<b>107,3</b>
0 3.1	Fodder maize	0	36	89,1	86,1	86,1	86,1	79,1	88,1
0 3.9	Other forage plants	62	5.690	102,9	98,6	96,6	100,3	101,3	107,6
0 3.9.1	Hay	29	2.682	105,5	102,7	104,1	102,7	104,1	105,5
0 3.9.2	Straw	14	1.234	119,8	114,7	108,5	111,6	105,4	114,7
0 3.9.9	Other forage plants ;others	19	1.774	93,0	87,6	81,9	80,9	83,6	89,4
<b>0 4</b>	<b>Vegetables</b>	<b>351</b>	<b>31.942</b>	<b>116,9</b>	<b>119,5</b>	<b>109,0</b>	<b>112,3</b>	<b>142,6</b>	<b>154,7</b>
0 4.1	Fresh vegetables	351	31.942	116,9	119,5	109,0	112,3	142,6	154,7
0 4.1.2	Tomatoes	30	2.716	.	.	.	.	213,1	164,5
0 4.1.9	Other fresh vegetables	321	29.226	116,9	119,5	109,0	112,3	117,1	152,9
0 4.1.9.9	Pepper	211	19.234	.	.	.	.	100,0	162,4
0 4.1.9.1	Cabbage	24	2.209	159,8	164,6	.	.	.	148,0
0 4.1.9.4	Cucumbers	11	1.009	.	.	.	.	172,3	158,3
0 4.1.9.6	Onions	19	1.729	102,4	104,3	108,9	118,0	140,6	123,7
0 4.1.9.7	Beans	31	2.825	106,4	106,4	106,4	108,3	101,8	103,6
0 4.1.9.	Water melon	10	936	.	.	.	.	.	.
0 4.1.9.9.9	Other fresh vegetable;other	14	1.283	107,5	108,8	136,8	105,7	88,9	103,7
<b>0 5</b>	<b>Potatoes</b>	<b>121</b>	<b>10.989</b>	<b>107,5</b>	<b>107,5</b>	<b>132,1</b>	<b>135,1</b>	<b>135,1</b>	<b>155,0</b>
<b>0 6</b>	<b>Fruits</b>	<b>50</b>	<b>4.567</b>	<b>108,1</b>	<b>107,0</b>	<b>100,0</b>	<b>100,0</b>	<b>94,1</b>	<b>101,2</b>
0 6.1	Fresh fruits	23	2.108	108,1	107,0	100,0	100,0	94,1	101,2
0 6.1.1	Apple	8	704	103,7	107,9	.	.	.	.
0 6.1.2	Pears	3	248	120,4	.	.	.	.	.
0 6.1.9	Other fresh fruit	13	1.156	108,7	100,0	100,0	100,0	94,1	101,2
0 6.1.9.2	Plums	5	491	.	.	.	.	.	.
0 6.1.9.4	Nuts and dried fruit	3	306	109,2	100,0	100,0	100,0	100,0	100,0
0 6.1.9.9	Other fresh fruits; other	4	359	100,0	100,0	.	.	93,6	101,3
0 6.4	Desert grapes	15	1.354	.	.	.	.	.	.
0 6.4.9	Wine grapes	12	1.105	..	.	.	.	.	.
<b>10</b>	<b>Crop Output</b>	<b>673</b>	<b>61.241</b>	<b>110,2</b>	<b>111,5</b>	<b>109,7</b>	<b>112,6</b>	<b>127,7</b>	<b>139,1</b>
<b>11</b>	<b>Animals</b>	<b>188</b>	<b>17.086</b>	<b>101,0</b>	<b>102,1</b>	<b>106,6</b>	<b>106,1</b>	<b>101,3</b>	<b>98,8</b>
11.1	Cattle	140	12.739	101,4	103,0	109,7	108,8	103,0	100,6
11.2	Pigs	9	791	103,3	103,3	103,3	103,3	100,5	97,7
11.4	Sheep	34	3.129	98,2	97,0	95,2	95,8	94,2	91,4
11.5	Poultry	4	345	106,9	109,8	106,9	106,9	104,0	104,0
11,9	Other animals	1	82	.	.	.	.	.	.
<b>12</b>	<b>Animal Products</b>	<b>140</b>	<b>12.722</b>	<b>102,6</b>	<b>102,6</b>	<b>101,6</b>	<b>99,2</b>	<b>96,2</b>	<b>93,0</b>
12.1	Milk	79	7.194	106,7	106,7	106,7	106,2	105,2	103,6
12.2	Eggs	52	4.760	96,7	96,7	93,6	88,0	82,3	76,2
12.9	Other animal products	8	768	100,5	100,5	102,6	102,6	98,5	98,5
<b>13</b>	<b>Animal Output</b>	<b>327</b>	<b>29.808</b>	<b>101,7</b>	<b>102,3</b>	<b>104,5</b>	<b>103,2</b>	<b>99,1</b>	<b>96,3</b>
<b>14</b>	<b>Total Output</b>	<b>1.000</b>	<b>91.049</b>	<b>107,4</b>	<b>108,5</b>	<b>108,0</b>	<b>109,5</b>	<b>118,4</b>	<b>125,1</b>

Table 15: Monthly Agricultural Output Price Index (Kosovo disposition) Jul-Dec 2006, (2005 = 100)

Item code	Groups	Weight in %	Weight 1000 Euro	2006					
				Jul	Aug	Sep	Oct	Nov	Dec
<b>0 1</b>	<b>Cereals</b>	<b>88</b>	<b>8.018</b>	<b>98,5</b>	<b>102,4</b>	<b>101,9</b>	<b>105,4</b>	<b>111,3</b>	<b>112,7</b>
0 1.1	Wheat	45	4.105	104,4	107,6	109,6	110,6	118,7	119,7
0 1.3	Barley	10	904	104,0	107,2	109,2	110,2	118,3	119,3
0 1.5	Maize	31	2.818	87,9	92,9	87,9	95,9	97,9	99,9
0 1.9	Other cereals	2	191	104,4	107,6	109,6	110,6	118,7	119,7
<b>0 3</b>	<b>Forage plants</b>	<b>63</b>	<b>5.726</b>	<b>97,8</b>	<b>100,7</b>	<b>102,1</b>	<b>103,9</b>	<b>112,2</b>	<b>119,4</b>
0 3.1	Fodder maize	0	36	88,1	93,1	88,1	96,1	98,1	100,1
0 3.9	Other forage plants	62	5.690	97,9	100,8	102,2	103,9	112,3	119,5
0 3.9.1	Hay	29	2.682	100,0	102,7	109,7	108,3	116,2	130,3
0 3.9.2	Straw	14	1.234	117,8	127,1	127,1	127,1	133,3	133,3
0 3.9.9	Other forage plants ;others	19	1.774	80,9	80,9	79,3	84,1	94,7	97,9
<b>0 4</b>	<b>Vegetables</b>	<b>351</b>	<b>31.942</b>	<b>106,9</b>	<b>93,8</b>	<b>96,2</b>	<b>104,1</b>	<b>87,6</b>	<b>98,8</b>
0 4.1	Fresh vegetables	351	31.942	106,9	93,8	96,2	104,1	87,6	98,8
0 4.1.2	Tomatoes	30	2.716	113,3	79,1	79,1	92,2	.	.
0 4.1.9	Other fresh vegetables	321	29.226	105,4	95,5	97,0	104,8	87,6	98,8
0 4.1.9	Pepper	211	19.234	107,5	95,0	97,0	104,1	.	.
0 4.1.9.1	Cabbage	24	2.209	96,0	96,0	101,6	100,0	67,5	59,8
0 4.1.9.4	Cucumbers	11	1.009	98,5	89,7	102,0	119,6	.	.
0 4.1.9.6	Onions	19	1.729	112,1	115,9	119,8	123,7	123,7	119,4
0 4.1.9.7	Beans	31	2.825	103,6	111,0	109,2	110,1	107,0	103,9
0 4.1.9	Water melon	10	936	80,5	84,4	72,9	.	.	.
0 4.1.9.9.9	Other fresh vegetable; other	14	1.283	99,9	102,7	101,4	101,1	101,6	104,5
<b>0 5</b>	<b>Potatoes</b>	<b>121</b>	<b>10.989</b>	<b>113,6</b>	<b>130,2</b>	<b>129,0</b>	<b>150,5</b>	<b>150,5</b>	<b>147,4</b>
<b>0 6</b>	<b>Fruits</b>	<b>50</b>	<b>4.567</b>	<b>125,1</b>	<b>90,8</b>	<b>94,6</b>	<b>97,6</b>	<b>107,4</b>	<b>102,8</b>
0 6.1	Fresh fruits	23	2.108	125,1	88,3	97,7	101,9	103,8	106,3
0 6.1.1	Apple	8	704	104,4	96,4	114,9	103,7	94,0	87,5
0 6.1.2	Pears	3	248	100,0	100,0	109,2	135,9	125,4	142,5
0 6.1.9	Other fresh fruit	13	1.156	129,4	86,2	84,1	88,9	103,9	110,6
0 6.1.9.2	Plums	5	491	145,4	88,5	79,2	83,0	.	.
0 6.1.9.4	Nuts and dried fruit	3	306	100,0	100,0	100,0	97,1	104,3	111,5
0 6.1.9.9	Other fresh fruits; other	4	359	100,0	74,5	100,0	100,0	100,0	100,0
0 6.4	Desert grapes	15	1.354	.	100,0	92,7	91,6	119,6	.
0 6.4.9	Wine grapes	12	1.105	.	.	.	100,0	100,0	100,0
<b>10</b>	<b>Crop Output</b>	<b>673</b>	<b>61.241</b>	<b>107,5</b>	<b>101,9</b>	<b>103,3</b>	<b>112,1</b>	<b>105,8</b>	<b>111,5</b>
<b>11</b>	<b>Animals</b>	<b>188</b>	<b>17.086</b>	<b>102,8</b>	<b>100,5</b>	<b>101,0</b>	<b>101,3</b>	<b>101,0</b>	<b>100,4</b>
11.1	Cattle	140	12.739	105,1	101,8	102,6	103,4	102,6	101,8
11.2	Pigs	9	791	97,7	97,7	97,7	97,7	97,7	97,7
11.4	Sheep	34	3.129	94,6	95,4	94,5	93,2	94,7	94,7
11.5	Poultry	4	345	104,0	104,0	106,0	106,0	106,9	108,0
11,9	Other animals	1	82	.	.	.	.	.	.
<b>12</b>	<b>Animal Products</b>	<b>140</b>	<b>12.722</b>	<b>93,9</b>	<b>100,3</b>	<b>103,4</b>	<b>105,3</b>	<b>109,3</b>	<b>113,3</b>
12.1	Milk	79	7.194	104,1	104,7	104,7	105,2	105,2	105,2
12.2	Eggs	52	4.760	77,7	93,9	102,2	106,5	117,4	127,9
12.9	Other animal products	8	768	98,5	98,5	98,5	98,5	98,5	98,5
<b>13</b>	<b>Animal Output</b>	<b>327</b>	<b>29.808</b>	<b>99,0</b>	<b>100,4</b>	<b>102,0</b>	<b>103,0</b>	<b>104,6</b>	<b>105,9</b>
<b>14</b>	<b>Total Output</b>	<b>1.000</b>	<b>91.049</b>	<b>104,7</b>	<b>101,4</b>	<b>102,9</b>	<b>109,1</b>	<b>105,4</b>	<b>109,7</b>

Table 16: Monthly Agricultural Output Price Index (Kosovo disposition) Jan-Jun 2007, (2005 = 100)

Item code	Groups	Weight in %	Weight 1000 Euro	2007					
				Jan	Feb	Mar	Apr	Maj	Jun
<b>0 1</b>	<b>Cereals</b>	<b>88</b>	<b>8.018</b>	<b>112,7</b>	<b>114,5</b>	<b>114,5</b>	<b>114,5</b>	<b>113,0</b>	<b>114,7</b>
0 1.1	Wheat	45	4.105	125,2	127,2	127,2	127,2	126,2	126,2
0 1.3	Barley	10	904	124,7	126,7	126,7	126,7	125,7	125,7
0 1.5	Maize	31	2.818	89,7	91,3	91,3	91,3	88,9	93,8
0 1.9	Other cereals	2	191	125,2	127,2	127,2	127,2	126,2	126,2
<b>0 3</b>	<b>Forage plants</b>	<b>63</b>	<b>5.726</b>	<b>114,0</b>	<b>113,1</b>	<b>117,4</b>	<b>124,0</b>	<b>120,9</b>	<b>119,0</b>
0 3.1	Fodder maize	0	36	89,9	91,5	91,5	91,5	89,1	94,0
0 3.9	Other forage plants	62	5.690	114,1	113,2	117,5	124,1	121,3	119,4
0 3.9.1	Hay	29	2.682	123,6	123,6	123,6	123,6	122,2	120,2
0 3.9.2	Straw	14	1.234	131,1	125,9	139,5	139,5	129,0	129,0
0 3.9.9	Other forage plants ;others	19	1.774	93,8	93,8	102,3	103,4	94,9	89,5
<b>0 4</b>	<b>Vegetables</b>	<b>351</b>	<b>31.942</b>	<b>110,9</b>	<b>108,1</b>	<b>110,3</b>	<b>111,8</b>	<b>140,5</b>	<b>124,7</b>
0 4.1	Fresh vegetables	351	31.942	110,9	108,1	110,3	111,8	140,5	124,7
0 4.1.2	Tomatoes	30	2.716	.	.	.	.	184,5	134,4
0 4.1.9	Other fresh vegetables	321	29.226	110,9	108,1	110,3	111,8	124,6	122,9
0 4.1.9	Pepper	211	19.234	.	.	.	.	100,0	126,1
0 4.1.9.1	Cabbage	24	2.209	120,0	112,0	.	.	.	116,0
0 4.1.9.4	Cucumbers	11	1.009	.	.	.	.	190,2	107,3
0 4.1.9.6	Onions	19	1.729	115,9	115,9	123,7	128,3	169,5	139,1
0 4.1.9.7	Beans	31	2.825	105,5	101,8	100,9	99,0	100,9	100,9
0 4.1.9	Water melon	10	936	.	.	.	.	.	.
0 4.1.9.9.9	Other fresh vegetable;other	14	1.283	103,5	104,6	106,6	100,8	105,4	107,7
<b>0 5</b>	<b>Potatoes</b>	<b>121</b>	<b>10.989</b>	<b>129,0</b>	<b>124,1</b>	<b>116,7</b>	<b>116,7</b>	<b>245,7</b>	<b>155,0</b>
<b>0 6</b>	<b>Fruits</b>	<b>50</b>	<b>4.567</b>	<b>121,3</b>	<b>97,4</b>	<b>100,0</b>	<b>100,0</b>	<b>137,0</b>	<b>116,9</b>
0 6.1	Fresh fruits	23	2.108	121,3	97,4	100,0	100,0	137,0	116,9
0 6.1.1	Apple	8	704	92,9	97,1	.	.	.	.
0 6.1.2	Pears	3	248	186,0	.	.	.	.	.
0 6.1.9	Other fresh fruit	13	1.156	134,5	100,0	100,0	100,0	137,0	116,9
0 6.1.9.2	Plums	5	491	.	.	.	.	.	.
0 6.1.9.4	Nuts and dried fruit	3	306	136,1	100,0	100,0	100,0	100,0	100,0
0 6.1.9.9	Other fresh fruits; other	4	359	100,0	100,0	.	.	139,8	117,5
0 6.4	Desert grapes	15	1.354	.	.	.	.	.	.
0 6.4.9	Wine grapes	12	1.105	.	.	.	.	.	.
<b>10</b>	<b>Crop Output</b>	<b>673</b>	<b>61.241</b>	<b>115,4</b>	<b>111,5</b>	<b>111,9</b>	<b>113,3</b>	<b>153,7</b>	<b>127,7</b>
<b>11</b>	<b>Animals</b>	<b>188</b>	<b>17.086</b>	<b>100,5</b>	<b>99,9</b>	<b>98,8</b>	<b>97,7</b>	<b>99,5</b>	<b>99,8</b>
11.1	Cattle	140	12.739	102,6	101,8	100,6	99,3	100,1	100,6
11.2	Pigs	9	791	97,7	97,7	97,7	95,3	100,4	100,4
11.4	Sheep	34	3.129	91,7	91,7	90,9	90,9	95,5	95,5
11.5	Poultry	4	345	108,0	107,5	107,5	107,5	108,3	108,9
11,9	Other animals	1	82	.	.	.	.	.	.
<b>12</b>	<b>Animal Products</b>	<b>140</b>	<b>12.722</b>	<b>110,6</b>	<b>104,6</b>	<b>101,6</b>	<b>100,4</b>	<b>98,6</b>	<b>97,7</b>
12.1	Milk	79	7.194	101,6	101,6	101,6	101,6	101,0	101,6
12.2	Eggs	52	4.760	126,2	110,1	102,1	99,0	95,5	92,4
12.9	Other animal products	8	768	98,5	98,5	98,5	98,5	94,4	94,4
<b>13</b>	<b>Animal Output</b>	<b>327</b>	<b>29.808</b>	<b>104,8</b>	<b>101,9</b>	<b>100,0</b>	<b>98,9</b>	<b>99,1</b>	<b>98,9</b>
<b>14</b>	<b>Total Output</b>	<b>1.000</b>	<b>91.049</b>	<b>111,9</b>	<b>108,3</b>	<b>108,0</b>	<b>108,6</b>	<b>135,8</b>	<b>118,3</b>

**Table 17: Monthly Agricultural Output Price Index (Kosovo disposition) Jul-Dec 2007, (2005 = 100)**

Item code	Groups	Weight in %	Weight 1000 Euro	2007					
				Jul	Aug	Sep	Oct	Nov	Dec
<b>0 1</b>	<b>Cereals</b>	<b>88</b>	<b>8.018</b>	<b>109,2</b>	<b>153,4</b>	<b>164,5</b>	<b>222,6</b>	<b>228,0</b>	<b>226,2</b>
0 1.1	Wheat	45	4.105	115,2	170,1	176,9	258,6	260,3	258,5
0 1.3	Barley	10	904	114,8	169,5	176,3	257,7	259,4	257,6
0 1.5	Maize	31	2.818	98,3	122,9	141,9	156,6	168,8	166,9
0 1.9	Other cereals	2	191	115,2	170,1	176,9	258,6	260,3	258,5
<b>0 3</b>	<b>Forage plants</b>	<b>63</b>	<b>5.726</b>	<b>121,2</b>	<b>129,1</b>	<b>141,0</b>	<b>167,7</b>	<b>189,9</b>	<b>222,1</b>
0 3.1	Fodder maize	0	36	98,5	123,2	142,2	156,9	169,1	167,2
0 3.9	Other forage plants	62	5.690	121,4	129,2	141,0	167,7	190,0	222,4
0 3.9.1	Hay	29	2.682	126,4	133,5	150,0	175,0	204,1	249,9
0 3.9.2	Straw	14	1.234	133,3	142,6	142,6	191,2	194,7	198,1
0 3.9.9	Other forage plants ;others	19	1.774	105,5	114,0	126,8	143,4	166,1	190,2
<b>0 4</b>	<b>Vegetables</b>	<b>351</b>	<b>31.942</b>	<b>103,7</b>	<b>102,7</b>	<b>113,4</b>	<b>123,1</b>	<b>143,1</b>	<b>131,4</b>
0 4.1	Fresh vegetables	351	31.942	103,7	102,7	113,4	123,1	143,1	131,4
0 4.1.2	Tomatoes	30	2.716	94,9	102,8	142,3	137,0	.	.
0 4.1.9	Other fresh vegetables	321	29.226	105,6	102,7	112,2	122,2	143,1	131,4
0 4.1.9	Pepper	211	19.234	103,6	98,3	106,4	108,6	.	.
0 4.1.9.1	Cabbage	24	2.209	172,0	272,0	280,0	184,0	152,0	140,0
0 4.1.9.4	Cucumbers	11	1.009	80,9	98,5	189,1	207,5	.	.
0 4.1.9.6	Onions	19	1.729	108,2	114,0	123,7	119,8	117,9	119,8
0 4.1.9.7	Beans	31	2.825	99,9	118,4	136,9	146,2	150,8	141,6
0 4.1.9	Water melon	10	936	110,5	89,5	102,3	.	.	.
0 4.1.9.9.9	Other fresh vegetable; other	14	1.283	102,2	103,5	104,0	100,2	99,8	104,9
<b>0 5</b>	<b>Potatoes</b>	<b>121</b>	<b>10.989</b>	<b>113,6</b>	<b>125,9</b>	<b>125,9</b>	<b>125,9</b>	<b>125,9</b>	<b>129,0</b>
<b>0 6</b>	<b>Fruits</b>	<b>50</b>	<b>4.567</b>	<b>130,2</b>	<b>93,1</b>	<b>107,9</b>	<b>108,2</b>	<b>121,5</b>	<b>120,9</b>
0 6.1	Fresh fruits	23	2.108	130,2	91,2	109,1	115,5	119,9	134,6
0 6.1.1	Apple	8	704	104,4	96,4	129,7	123,9	109,5	118,2
0 6.1.2	Pears	3	248	100,0	100,0	120,9	133,7	144,3	163,4
0 6.1.9	Other fresh fruit	13	1.156	135,5	89,8	93,2	102,7	119,0	140,2
0 6.1.9.2	Plums	5	491	149,5	87,0	90,9	90,9	.	.
0 6.1.9.4	Nuts and dried fruit	3	306	100,0	100,0	100,0	121,4	120,7	143,7
0 6.1.9.9	Other fresh fruits; other	4	359	110,5	101,7	100,8	100,0	100,0	100,0
0 6.4	Desert grapes	15	1.354	.	100,0	107,3	108,4	137,1	.
0 6.4.9	Wine grapes	12	1.105	.	.	.	102,2	110,1	110,1
<b>10</b>	<b>Crop Output</b>	<b>673</b>	<b>61.241</b>	<b>109,8</b>	<b>115,3</b>	<b>124,5</b>	<b>139,7</b>	<b>153,9</b>	<b>151,1</b>
<b>11</b>	<b>Animals</b>	<b>188</b>	<b>17.086</b>	<b>99,5</b>	<b>101,1</b>	<b>101,3</b>	<b>102,0</b>	<b>100,8</b>	<b>101,2</b>
11.1	Cattle	140	12.739	98,5	100,1	101,0	101,8	100,1	99,3
11.2	Pigs	9	791	101,7	123,0	106,8	110,2	108,6	110,2
11.4	Sheep	34	3.129	102,0	99,0	100,0	100,0	100,0	105,1
11.5	Poultry	4	345	111,2	108,0	110,6	110,4	114,7	116,2
11.9	Other animals	1	82	.	.	.	.	.	.
<b>12</b>	<b>Animal Products</b>	<b>140</b>	<b>12.722</b>	<b>95,2</b>	<b>105,4</b>	<b>105,9</b>	<b>111,2</b>	<b>112,2</b>	<b>120,4</b>
12.1	Milk	79	7.194	102,1	108,3	106,7	113,5	114,5	118,7
12.2	Eggs	52	4.760	85,0	102,9	106,6	110,4	111,3	126,8
12.9	Other animal products	8	768	94,4	94,4	94,4	94,4	96,4	96,4
<b>13</b>	<b>Animal Output</b>	<b>327</b>	<b>29.808</b>	<b>97,7</b>	<b>103,0</b>	<b>103,3</b>	<b>105,9</b>	<b>105,7</b>	<b>109,4</b>
<b>14</b>	<b>Total Output</b>	<b>1.000</b>	<b>91.049</b>	<b>105,8</b>	<b>111,2</b>	<b>117,6</b>	<b>128,6</b>	<b>138,1</b>	<b>137,4</b>

**Table 18 Monthly Agricultural Output Price Index (Kosovo disposition) Jan-Jun 2008, (2005 = 100)**

Item code	Groups	Weight in %	Weight 1000 Euro	2008					
				Jan	Feb	Mar	Apr	Maj	Jun
<b>0 1</b>	<b>Cereals</b>	<b>88</b>	<b>8.018</b>	<b>218,5</b>	<b>218,7</b>	<b>223,9</b>	<b>223,5</b>	<b>208,2</b>	<b>206,0</b>
0 1.1	Wheat	45	4.105	242,9	244,4	244,4	240,0	231,6	224,5
0 1.3	Barley	10	904	242,1	243,6	243,6	239,2	196,8	212,1
0 1.5	Maize	31	2.818	173,7	172,0	186,7	194,1	177,8	176,9
0 1.9	Other cereals	2	191	242,9	236,6	236,2	227,3	209,3	209,3
<b>0 3</b>	<b>Forage plants</b>	<b>63</b>	<b>5.726</b>	<b>213,7</b>	<b>194,1</b>	<b>203,7</b>	<b>212,1</b>	<b>207,1</b>	<b>197,8</b>
0 3.1	Fodder maize	0	36	174,0	172,4	187,1	194,5	178,1	177,3
0 3.9	Other forage plants	62	5.690	213,8	194,2	203,8	212,1	207,4	198,2
0 3.9.1	Hay	29	2.682	233,3	201,3	209,7	213,8	218,0	193,0
0 3.9.2	Straw	14	1.234	205,1	205,1	219,0	229,4	208,6	212,0
0 3.9.9	Other forage plants ;others	19	1.774	187,5	180,1	190,8	185,4	187,6	164,1
<b>0 4</b>	<b>Vegetables</b>	<b>351</b>	<b>31.942</b>	<b>146,0</b>	<b>152,7</b>	<b>140,5</b>	<b>140,9</b>	<b>147,6</b>	<b>161,4</b>
0 4.1	Fresh vegetables	351	31.942	146,0	152,7	140,5	140,9	147,6	161,4
0 4.1.2	Tomatoes	30	2.716	.	.	.	.	220,4	131,1
0 4.1.9	Other fresh vegetables	321	29.226	146,0	152,7	140,5	140,9	121,2	167,1
0 4.1.9	Pepper	211	19.234	.	.	.	.	100,0	184,3
0 4.1.9.1	Cabbage	24	2.209	202,8	200,0	.	.	.	160,0
0 4.1.9.4	Cucumbers	11	1.009	.	.	.	.	161,8	105,5
0 4.1.9.6	Onions	19	1.729	123,7	127,5	137,2	139,1	135,3	123,7
0 4.1.9.7	Beans	31	2.825	141,6	152,7	144,3	146,2	143,4	143,4
0 4.1.9	Water melon	10	936	.	.	.	.	.	.
0 4.1.9.9.9	Other fresh vegetable;other	14	1.283	105,9	107,7	125,6	106,8	97,7	101,6
<b>0 5</b>	<b>Potatoes</b>	<b>121</b>	<b>10.989</b>	<b>138,2</b>	<b>125,9</b>	<b>125,9</b>	<b>129,0</b>	<b>178,1</b>	<b>155,0</b>
<b>0 6</b>	<b>Fruits</b>	<b>50</b>	<b>4.567</b>	<b>139,2</b>	<b>120,5</b>	<b>115,0</b>	<b>117,4</b>	<b>159,5</b>	<b>112,5</b>
0 6.1	Fresh fruits	23	2.108	139,2	120,5	115,0	117,4	159,5	112,5
0 6.1.1	Apple	8	704	114,7	121,6	.	.	.	.
0 6.1.2	Pears	3	248	200,3	.	.	.	.	.
0 6.1.9	Other fresh fruit	13	1.156	147,3	111,4	115,0	117,4	159,5	112,5
0 6.1.9.2	Plums	5	491	.	.	.	.	.	.
0 6.1.9.4	Nuts and dried fruit	3	306	149,5	112,0	115,0	117,4	122,6	121,7
0 6.1.9.9	Other fresh fruits; other	4	359	100,0	109,1	.	.	162,3	112,2
0 6.4	Desert grapes	15	1.354	.	.	.	.	.	.
0 6.4.9	Wine grapes	12	1.105	.	.	.	.	.	.
<b>10</b>	<b>Crop Output</b>	<b>673</b>	<b>61.241</b>	<b>159,9</b>	<b>158,0</b>	<b>152,8</b>	<b>154,5</b>	<b>167,4</b>	<b>165,9</b>
<b>11</b>	<b>Animals</b>	<b>188</b>	<b>17.086</b>	<b>100,3</b>	<b>101,1</b>	<b>101,4</b>	<b>101,6</b>	<b>107,9</b>	<b>111,7</b>
11.1	Cattle	140	12.739	98,5	99,3	99,3	99,3	105,9	110,9
11.2	Pigs	9	791	119,2	119,2	119,2	119,2	126,6	126,6
11.4	Sheep	34	3.129	99,1	99,8	100,6	101,3	107,3	107,3
11.5	Poultry	4	345	132,9	135,6	143,7	146,2	144,7	148,7
11,9	Other animals	1	82	.	.	.	.	.	.
<b>12</b>	<b>Animal Products</b>	<b>140</b>	<b>12.722</b>	<b>123,3</b>	<b>121,8</b>	<b>120,3</b>	<b>115,0</b>	<b>117,8</b>	<b>115,7</b>
12.1	Milk	79	7.194	120,7	122,3	122,8	127,5	130,1	128,0
12.2	Eggs	52	4.760	131,6	124,9	120,1	98,9	102,3	99,8
12.9	Other animal products	8	768	96,4	98,5	98,5	98,5	98,5	98,5
<b>13</b>	<b>Animal Output</b>	<b>327</b>	<b>29.808</b>	<b>110,1</b>	<b>109,9</b>	<b>109,5</b>	<b>107,3</b>	<b>112,1</b>	<b>113,4</b>
<b>14</b>	<b>Total Output</b>	<b>1.000</b>	<b>91.049</b>	<b>143,6</b>	<b>142,3</b>	<b>138,6</b>	<b>139,0</b>	<b>149,3</b>	<b>148,7</b>



**Table 19: Monthly Agricultural Output Price Index (Kosovo disposition) Jul-Dec 2008, (2005 = 100)**

Item code	Groups	Weight in %	Weight 1000 Euro	2008					
				Jul	Aug	Sep	Oct	Nov	Dec
<b>0 1</b>	<b>Cereals</b>	<b>88</b>	<b>8.018</b>	<b>183,3</b>	<b>179,0</b>	<b>180,4</b>	<b>171,9</b>	<b>169,9</b>	<b>163,2</b>
0 1.1	Wheat	45	4.105	187,9	175,3	175,3	169,3	165,3	159,2
0 1.3	Barley	10	904	212,1	226,7	226,7	226,7	226,7	226,7
0 1.5	Maize	31	2.818	166,3	168,0	172,0	156,6	156,6	146,8
0 1.9	Other cereals	2	191	196,3	195,5	195,5	194,6	197,2	189,6
<b>0 3</b>	<b>Forage plants</b>	<b>63</b>	<b>5.726</b>	<b>173,2</b>	<b>154,8</b>	<b>168,9</b>	<b>162,8</b>	<b>168,8</b>	<b>183,8</b>
0 3.1	Fodder maize	0	36	166,7	168,3	172,4	156,9	156,9	147,1
0 3.9	Other forage plants	62	5.690	173,3	154,7	168,9	162,8	168,8	184,1
0 3.9.1	Hay	29	2.682	177,7	166,6	180,5	175,0	181,9	199,9
0 3.9.2	Straw	14	1.234	187,7	145,3	170,9	156,7	159,5	165,2
0 3.9.9	Other forage plants ;others	19	1.774	156,5	142,8	150,5	147,9	154,3	167,3
<b>0 4</b>	<b>Vegetables</b>	<b>351</b>	<b>31.942</b>	<b>103,6</b>	<b>70,0</b>	<b>97,8</b>	<b>118,2</b>	<b>102,4</b>	<b>113,9</b>
0 4.1	Fresh vegetables	351	31.942	103,6	70,0	97,8	118,2	102,4	113,9
0 4.1.2	Tomatoes	30	2.716	81,7	51,4	63,2	158,1	.	.
0 4.1.9	Other fresh vegetables	321	29.226	108,4	72,1	99,3	115,8	102,4	113,9
0 4.1.9	Pepper	211	19.234	112,6	64,6	96,5	116,7	.	.
0 4.1.9.1	Cabbage	24	2.209	84,8	88,0	92,0	80,0	81,6	76,0
0 4.1.9.4	Cucumbers	11	1.009	63,3	98,5	137,2	214,5	.	.
0 4.1.9.6	Onions	19	1.729	98,6	96,6	96,6	115,9	115,9	119,8
0 4.1.9.7	Beans	31	2.825	141,6	152,7	148,0	149,9	148,0	141,6
0 4.1.9	Water melon	10	936	107,4	76,6	100,2	.	.	.
0 4.1.9.9.9	Other fresh vegetable;other	14	1.283	99,4	79,2	72,5	76,4	70,3	69,1
<b>0 5</b>	<b>Potatoes</b>	<b>121</b>	<b>10.989</b>	<b>113,6</b>	<b>122,8</b>	<b>135,1</b>	<b>129,0</b>	<b>132,1</b>	<b>132,1</b>
<b>0 6</b>	<b>Fruits</b>	<b>50</b>	<b>4.567</b>	<b>121,4</b>	<b>85,6</b>	<b>107,1</b>	<b>105,1</b>	<b>115,6</b>	<b>115,9</b>
0 6.1	Fresh fruits	23	2.108	121,4	81,7	104,8	104,6	119,2	123,2
0 6.1.1	Apple	8	704	104,4	96,4	141,8	123,9	118,2	109,5
0 6.1.2	Pears	3	248	100,0	81,9	117,2	115,4	131,9	168,0
0 6.1.9	Other fresh fruit	13	1.156	125,0	79,1	78,4	85,9	112,9	114,1
0 6.1.9.2	Plums	5	491	134,1	75,2	73,1	73,1	.	.
0 6.1.9.4	Nuts and dried fruit	3	306	126,8	120,8	113,0	107,5	114,8	116,2
06.1.9.9	Other fresh fruits; other	4	359	107,3	94,3	89,4	69,6	90,2	90,0
0 6.4	Desert grapes	15	1.354	.	100,0	108,4	108,4	119,6	.
0 6.4.9	Wine grapes	12	1.105	.	.	.	102,2	110,1	110,1
<b>10</b>	<b>Crop Output</b>	<b>673</b>	<b>61.241</b>	<b>123,7</b>	<b>102,9</b>	<b>122,7</b>	<b>130,4</b>	<b>123,8</b>	<b>130,3</b>
<b>11</b>	<b>Animals</b>	<b>188</b>	<b>17.086</b>	<b>115,5</b>	<b>116,7</b>	<b>119,4</b>	<b>121,1</b>	<b>123,2</b>	<b>125,6</b>
11.1	Cattle	140	12.739	115,4	116,7	119,2	120,0	123,3	126,2
11.2	Pigs	9	791	134,1	131,9	131,9	135,7	135,7	136,6
11.4	Sheep	34	3.129	107,3	109,6	112,6	117,1	115,6	116,4
11.5	Poultry	4	345	149,0	146,6	158,7	162,2	159,2	162,7
11,9	Other animals (horses)	1	82	.	.	.	.	.	.
<b>12</b>	<b>Animal Products</b>	<b>140</b>	<b>12.722</b>	<b>116,2</b>	<b>121,8</b>	<b>122,0</b>	<b>122,6</b>	<b>123,4</b>	<b>124,1</b>
12.1	Milk	79	7.194	122,8	122,8	121,2	123,3	123,8	124,9
12.2	Eggs	52	4.760	109,4	124,1	126,9	125,5	126,8	127,4
12.9	Other animal products	8	768	96,4	98,5	98,5	98,5	98,5	96,4
<b>13</b>	<b>Animal Output</b>	<b>327</b>	<b>29.808</b>	<b>115,8</b>	<b>118,9</b>	<b>120,5</b>	<b>121,7</b>	<b>123,3</b>	<b>125,0</b>
<b>14</b>	<b>Total Output</b>	<b>1.000</b>	<b>91.049</b>	<b>121,1</b>	<b>108,1</b>	<b>121,9</b>	<b>127,5</b>	<b>123,6</b>	<b>128,6</b>

Table 20 Monthly Agricultural Output Price Index (Kosovo disposition) Jan-Jun 2009, (2005 = 100)

Item code	Groups	Weight in %	Weight 1000 Euro	2009					
				Jan	Feb	Mar	Apr	Maj	Jun
<b>0 1</b>	<b>Cereals</b>	<b>88</b>	<b>8.018</b>	<b>161,7</b>	<b>153,8</b>	<b>147,4</b>	<b>129,6</b>	<b>127,6</b>	<b>126,6</b>
0 1.1	Wheat	45	4.105	158,2	152,7	151,1	141,1	145,1	140,1
0 1.3	Barley	10	904	226,7	194,4	194,4	178,9	155,5	154,7
0 1.5	Maize	31	2.818	143,5	141,1	126,4	97,0	93,8	98,7
0 1.9	Other cereals	2	191	196,1	172,8	153,9	130,7	116,9	117,4
<b>0 3</b>	<b>Forage plants</b>	<b>63</b>	<b>5.726</b>	<b>172,9</b>	<b>177,9</b>	<b>142,2</b>	<b>140,6</b>	<b>134,4</b>	<b>131,0</b>
0 3.1	Fodder maize	0	36	143,8	141,4	126,7	97,2	94,0	98,9
0 3.9	Other forage plants	62	5.690	173,1	178,1	142,2	140,7	134,9	131,6
0 3.9.1	Hay	29	2.682	185,8	191,4	154,1	154,1	144,4	134,7
0 3.9.2	Straw	14	1.234	170,9	163,5	140,0	133,9	133,9	133,9
0 3.9.9	Other forage plants ;others	19	1.774	154,5	162,3	124,9	130,0	123,6	120,0
<b>0 4</b>	<b>Vegetables</b>	<b>351</b>	<b>31.942</b>	<b>129,3</b>	<b>125,4</b>	<b>129,6</b>	<b>121,0</b>	<b>136,3</b>	<b>119,3</b>
0 4.1	Fresh vegetables	351	31.942	129,3	125,4	129,6	121,0	136,3	119,3
0 4.1.2	Tomatoes	30	2.716	.	.	.	.	204,4	138,1
0 4.1.9	Other fresh vegetables	321	29.226	129,3	125,4	129,6	121,0	111,7	115,8
0 4.1.9	Pepper	211	19.234	.	.	.	.	93,5	113,6
0 4.1.9.1	Cabbage	24	2.209	136,0	128,0	.	.	.	128,0
0 4.1.9.4	Cucumbers	11	1.009	.	.	.	.	147,7	98,5
0 4.1.9.6	Onions	19	1.729	115,9	108,2	108,2	102,4	108,2	123,7
0 4.1.9.7	Beans	31	2.825	146,2	143,4	146,2	138,8	140,6	138,8
0 4.1.9	Water melon	10	936	.	.	.	.	.	.
0 4.1.9.9.9	Other fresh vegetable;other	14	1.283	84,0	88,8	118,6	102,9	113,9	113,6
<b>0 5</b>	<b>Potatoes</b>	<b>121</b>	<b>10.989</b>	<b>119,8</b>	<b>118,6</b>	<b>117,9</b>	<b>110,6</b>	<b>98,3</b>	<b>190,4</b>
<b>0 6</b>	<b>Fruits</b>	<b>50</b>	<b>4.567</b>	<b>120,3</b>	<b>98,2</b>	<b>108,7</b>	<b>117,4</b>	<b>135,9</b>	<b>125,3</b>
0 6.1	Fresh fruits	23	2.108	120,3	98,2	108,7	117,4	135,9	125,3
0 6.1.1	Apple	8	704	98,0	98,0	.	.	.	.
0 6.1.2	Pears	3	248	180,1	.	.	.	.	.
0 6.1.9	Other fresh fruit	13	1.156	125,0	99,9	108,7	117,4	135,9	125,3
0 6.1.9.2	Plums	5	491	.	.	.	.	.	.
0 6.1.9.4	Nuts and dried fruit	3	306	128,2	108,7	108,7	117,4	117,4	122,5
0 6.1.9.9	Other fresh fruits; other	4	359	57,6	63,9	.	.	137,3	125,4
0 6.4	Desert grapes	15	1.354	.	.	.	.	.	.
06.4.9	Wine grapes	12	1.105	.	.	.	.	.	.
<b>10</b>	<b>Crop Output</b>	<b>673</b>	<b>61.241</b>	<b>135,3</b>	<b>130,8</b>	<b>129,4</b>	<b>121,8</b>	<b>128,2</b>	<b>134,6</b>
<b>11</b>	<b>Animals</b>	<b>188</b>	<b>17.086</b>	<b>122,5</b>	<b>120,9</b>	<b>124,8</b>	<b>124,6</b>	<b>124,9</b>	<b>122,7</b>
11.1	Cattle	140	12.739	122,5	120,0	124,1	124,1	124,1	122,5
11.2	Pigs	9	791	141,3	141,3	141,3	141,3	141,3	137,6
11.4	Sheep	34	3.129	114,1	114,1	119,4	118,7	119,6	116,0
11.5	Poultry	4	345	158,0	166,5	160,5	158,0	163,0	158,0
11,9	Other animals	1	82	.	.	.	.	.	.
<b>12</b>	<b>Animal Products</b>	<b>140</b>	<b>12.722</b>	<b>122,1</b>	<b>116,4</b>	<b>112,5</b>	<b>104,0</b>	<b>98,5</b>	<b>98,3</b>
12.1	Milk	79	7.194	124,9	121,2	120,7	117,1	114,5	111,4
12.2	Eggs	52	4.760	122,0	111,3	101,5	84,2	73,2	77,5
12.9	Other animal products	8	768	96,4	102,6	102,6	104,6	104,6	104,6
<b>13</b>	<b>Animal Output</b>	<b>327</b>	<b>29.808</b>	<b>122,3</b>	<b>118,9</b>	<b>119,5</b>	<b>115,8</b>	<b>113,6</b>	<b>112,3</b>
<b>14</b>	<b>Total Output</b>	<b>1.000</b>	<b>91.049</b>	<b>131,0</b>	<b>126,9</b>	<b>126,2</b>	<b>119,8</b>	<b>123,4</b>	<b>127,3</b>

**Table 21: Monthly Agricultural Output Price Index (Kosovo disposition) Jul-Dec 2009, (2005 = 100)**

Item code	Groups	Weight in %	Weight 1000 Euro	2009					
				Jul	Aug	Sep	Oct	Nov	Dec
<b>0 1</b>	<b>Cereals</b>	<b>88</b>	<b>8.018</b>	<b>114,8</b>	<b>112,4</b>	<b>112,5</b>	<b>111,6</b>	<b>112,5</b>	<b>113,2</b>
0 1.1	Wheat	45	4.105	111,9	108,8	108,8	106,8	104,8	105,8
0 1.3	Barley	10	904	154,7	154,7	160,2	160,2	151,8	148,1
0 1.5	Maize	31	2.818	106,0	104,4	102,7	102,7	110,1	111,7
0 1.9	Other cereals	2	191	117,7	107,8	107,3	116,7	128,6	128,3
<b>0 3</b>	<b>Forage plants</b>	<b>63</b>	<b>5.726</b>	<b>128,0</b>	<b>115,7</b>	<b>111,9</b>	<b>115,8</b>	<b>114,5</b>	<b>121,2</b>
0 3.1	Fodder maize	0	36	106,2	104,6	103,0	103,0	110,3	111,9
0 3.9	Other forage plants	62	5.690	128,1	115,8	111,9	115,9	114,6	121,3
0 3.9.1	Hay	29	2.682	133,3	127,7	118,0	123,6	122,2	131,9
0 3.9.2	Straw	14	1.234	131,0	105,4	108,2	108,2	108,2	111,1
0 3.9.9	Other forage plants ;others	19	1.774	118,3	104,4	104,4	108,7	106,6	109,1
<b>0 4</b>	<b>Vegetables</b>	<b>351</b>	<b>31.942</b>	<b>112,7</b>	<b>85,2</b>	<b>97,8</b>	<b>101,1</b>	<b>99,6</b>	<b>112,9</b>
0 4.1	Fresh vegetables	351	31.942	112,7	85,2	97,8	101,1	99,6	112,9
0 4.1.2	Tomatoes	30	2.716	102,8	81,7	92,2	97,5	.	.
0 4.1.9	Other fresh vegetables	321	29.226	114,9	85,6	98,1	101,3	99,6	112,9
0 4.1.9	Pepper	211	19.234	115,3	80,0	94,5	95,3	.	.
0 4.1.9.1	Cabbage	24	2.209	104,0	109,6	117,6	112,0	88,0	100,0
0 4.1.9.4	Cucumbers	11	1.009	86,2	95,0	144,2	154,7	.	.
0 4.1.9.6	Onions	19	1.729	139,1	121,7	127,5	129,5	119,8	131,4
0 4.1.9.7	Beans	31	2.825	136,9	143,4	138,8	132,3	124,9	122,1
0 4.1.9	Water melon	10	936	100,2	87,3	97,4	.	.	.
0 4.1.9.9.9	Other fresh vegetable;other	14	1.283	118,2	89,6	73,6	71,1	66,2	71,1
<b>0 5</b>	<b>Potatoes</b>	<b>121</b>	<b>10.989</b>	<b>150,5</b>	<b>122,8</b>	<b>122,8</b>	<b>125,9</b>	<b>129,0</b>	<b>125,9</b>
<b>0 6</b>	<b>Fruits</b>	<b>50</b>	<b>4.567</b>	<b>127,0</b>	<b>90,3</b>	<b>101,0</b>	<b>102,1</b>	<b>98,7</b>	<b>97,9</b>
0 6.1	Fresh fruits	23	2.108	127,0	87,3	94,7	107,1	108,4	116,6
0 6.1.1	Apple	8	704	116,5	108,4	108,1	112,4	102,3	100,9
0 6.1.2	Pears	3	248	95,8	86,1	128,2	131,9	124,5	141,0
0 6.1.9	Other fresh fruit	13	1.156	130,1	83,7	78,2	94,5	106,9	124,1
0 6.1.9.2	Plums	5	491	134,1	85,3	73,1	82,3	.	.
0 6.1.9.4	Nuts and dried fruit	3	306	107,0	111,1	98,3	114,3	108,9	127,2
06.1.9.9	Other fresh fruits; other	4	359	123,8	74,5	93,4	88,1	83,0	88,7
0 6.4	Desert grapes	15	1.354	.	101,3	104,7	108,4	110,3	.
06.4.9	Wine grapes	12	1.105	.	.	.	92,1	83,1	83,1
<b>10</b>	<b>Crop Output</b>	<b>673</b>	<b>61.241</b>	<b>122,2</b>	<b>98,7</b>	<b>105,8</b>	<b>108,4</b>	<b>107,9</b>	<b>115,0</b>
<b>11</b>	<b>Animals</b>	<b>188</b>	<b>17.086</b>	<b>121,8</b>	<b>118,6</b>	<b>115,3</b>	<b>113,4</b>	<b>114,2</b>	<b>113,9</b>
11.1	Cattle	140	12.739	123,3	118,3	115,0	112,6	113,4	112,6
11.2	Pigs	9	791	131,9	131,9	129,8	129,8	116,6	116,6
11.4	Sheep	34	3.129	109,6	112,1	108,5	107,8	111,1	112,6
11.5	Poultry	4	345	154,3	154,3	155,5	158,0	167,9	170,4
11,9	Other animals	1	82	.	.	.	.	.	.
<b>12</b>	<b>Animal Products</b>	<b>140</b>	<b>12.722</b>	<b>100,3</b>	<b>103,3</b>	<b>101,7</b>	<b>100,2</b>	<b>102,0</b>	<b>95,2</b>
12.1	Milk	79	7.194	108,8	110,9	111,9	109,3	110,4	97,9
12.2	Eggs	52	4.760	86,7	91,7	85,7	85,7	89,0	89,6
12.9	Other animal products	8	768	104,6	104,6	104,6	104,6	104,6	104,6
<b>13</b>	<b>Animal Output</b>	<b>327</b>	<b>29.808</b>	<b>112,6</b>	<b>112,0</b>	<b>109,5</b>	<b>107,8</b>	<b>109,0</b>	<b>105,9</b>
<b>14</b>	<b>Total Output</b>	<b>1.000</b>	<b>91.049</b>	<b>119,1</b>	<b>103,1</b>	<b>107,0</b>	<b>108,2</b>	<b>108,3</b>	<b>112,0</b>

Table 22 ; Monthly Agricultural Output Price Index (Kosovo disposition) Jan-Jun 2010, (2005 = 100)

Item code	Groups	Weight in %	Weight 1000 Euro	2010					
				Jan	Feb	Mar	Apr	Maj	Jun
<b>0 1</b>	<b>Cereals</b>	<b>88</b>	<b>8.018</b>	<b>110,8</b>	<b>109,6</b>	<b>109,0</b>	<b>107,9</b>	<b>105,8</b>	<b>108,9</b>
0 1.1	Wheat	45	4.105	107,8	110,8	110,8	109,8	106,8	106,8
0 1.3	Barley	10	904	138,6	126,6	126,6	127,6	122,5	126,8
0 1.5	Maize	31	2.818	104,4	101,1	100,2	98,7	98,7	106,0
0 1.9	Other cereals	2	191	139,0	127,2	116,7	109,5	109,6	109,6
<b>0 3</b>	<b>Forage plants</b>	<b>63</b>	<b>5.726</b>	<b>133,3</b>	<b>126,7</b>	<b>116,4</b>	<b>117,1</b>	<b>117,5</b>	<b>118,8</b>
0 3.1	Fodder maize	0	36	104,6	101,3	100,4	97,2	97,2	104,6
0 3.9	Other forage plants	62	5.690	133,4	126,9	116,5	117,2	117,7	119,0
0 3.9.1	Hay	29	2.682	143,0	133,3	122,2	109,7	105,5	104,1
0 3.9.2	Straw	14	1.234	119,6	130,0	124,9	134,5	128,1	131,3
0 3.9.9	Other forage plants ;others	19	1.774	123,6	116,2	105,5	104,4	102,3	104,4
<b>0 4</b>	<b>Vegetables</b>	<b>351</b>	<b>31.942</b>	<b>128,0</b>	<b>146,9</b>	<b>139,6</b>	<b>156,2</b>	<b>146,4</b>	<b>142,5</b>
0 4.1	Fresh vegetables	351	31.942	128,0	146,9	139,6	156,2	146,4	142,5
0 4.1.2	Tomatoes	30	2.716	.	.	.	.	175,5	115,3
0 4.1.9	Other fresh vegetables	321	29.226	128,0	146,9	139,6	156,2	135,8	147,5
0 4.1.9	Pepper	211	19.234	.	.	.	.	116,1	158,2
0 4.1.9.1	Cabbage	24	2.209	140,0	152,0	.	.	.	120,0
0 4.1.9.4	Cucumbers	11	1.009	.	.	.	.	179,8	102,0
0 4.1.9.6	Onions	19	1.729	162,3	216,4	170,0	208,7	181,6	158,5
0 4.1.9.7	Beans	31	2.825	118,4	116,6	116,6	113,8	113,8	111,0
0 4.1.9	Water melon	10	936	.	.	.	.	.	.
0 4.1.9.9.9	Other fresh vegetable;other	14	1.283	70,6	74,2	149,2	136,3	128,4	130,4
<b>0 5</b>	<b>Potatoes</b>	<b>121</b>	<b>10.989</b>	<b>113,6</b>	<b>113,6</b>	<b>122,8</b>	<b>119,8</b>	<b>156,6</b>	<b>202,7</b>
<b>0 6</b>	<b>Fruits</b>	<b>50</b>	<b>4.567</b>	<b>112,7</b>	<b>88,8</b>	<b>108,7</b>	<b>108,7</b>	<b>131,0</b>	<b>112,1</b>
0 6.1	Fresh fruits	23	2.108	112,7	88,8	108,7	108,7	131,0	112,1
0 6.1.1	Apple	8	704	95,1	87,3	.	.	.	.
0 6.1.2	Pears	3	248	119,0	.	.	.	.	.
0 6.1.9	Other fresh fruit	13	1.156	141,0	100,4	108,7	108,7	131,0	112,1
0 6.1.9.2	Plums	5	491	.	.	.	.	.	.
0 6.1.9.4	Nuts and dried fruit	3	306	144,9	108,7	108,7	108,7	106,7	108,7
0 6.1.9.9	Other fresh fruits; other	4	359	60,8	66,3	.	.	132,9	112,2
0 6.4	Desert grapes	15	1.354	.	.	.	.	.	.
06.4.9	Wine grapes	12	1.105	.	.	.	.	.	.
<b>10</b>	<b>Crop Output</b>	<b>673</b>	<b>61.241</b>	<b>122,5</b>	<b>129,8</b>	<b>128,1</b>	<b>136,1</b>	<b>139,1</b>	<b>144,4</b>
<b>11</b>	<b>Animals</b>	<b>188</b>	<b>17.086</b>	<b>114,6</b>	<b>114,9</b>	<b>114,9</b>	<b>117,6</b>	<b>117,9</b>	<b>118,2</b>
11.1	Cattle	140	12.739	113,4	113,4	112,6	115,0	115,0	115,9
11.2	Pigs	9	791	123,7	132,2	132,2	135,9	135,9	137,1
11.4	Sheep	34	3.129	111,1	111,1	114,1	117,1	118,7	117,1
11.5	Poultry	4	345	168,4	165,5	167,9	176,7	174,2	169,2
11,9	Other animals	1	82	.	.	.	.	.	.
<b>12</b>	<b>Animal Products</b>	<b>140</b>	<b>12.722</b>	<b>98,2</b>	<b>98,5</b>	<b>97,8</b>	<b>97,2</b>	<b>97,8</b>	<b>94,6</b>
12.1	Milk	79	7.194	102,6	104,1	104,7	102,6	103,6	103,6
12.2	Eggs	52	4.760	90,2	88,7	86,0	87,5	87,5	79,0
12.9	Other animal products	8	768	106,7	106,7	106,7	106,7	106,7	106,7
<b>13</b>	<b>Animal Output</b>	<b>327</b>	<b>29.808</b>	<b>107,6</b>	<b>107,9</b>	<b>107,6</b>	<b>108,9</b>	<b>109,3</b>	<b>108,1</b>
<b>14</b>	<b>Total Output</b>	<b>1.000</b>	<b>91.049</b>	<b>117,6</b>	<b>122,7</b>	<b>121,4</b>	<b>127,2</b>	<b>129,3</b>	<b>132,5</b>

**Table 23 ; Monthly Agricultural Output Price Index (Kosovo disposition) Jul-Dec 2010, (2005 = 100**

Item code	Groups	Weight in %	Weight 1000 Euro	2010					
				Jul	Aug	Sep	Oct	Nov	Dec
<b>0 1</b>	<b>Cereals</b>	<b>88</b>	<b>8.018</b>	<b>115,8</b>	<b>145,4</b>	<b>146,6</b>	<b>147,3</b>	<b>151,9</b>	<b>166,8</b>
0 1.1	Wheat	45	4.105	107,8	148,1	146,1	146,1	153,2	181,4
0 1.3	Barley	10	904	126,8	134,8	137,7	137,7	150,2	155,2
0 1.5	Maize	31	2.818	124,8	146,8	152,5	154,1	152,5	151,7
0 1.9	Other cereals	2	191	104,7	116,5	113,9	118,2	122,5	131,7
<b>0 3</b>	<b>Forage plants</b>	<b>63</b>	<b>5.726</b>	<b>102,4</b>	<b>103,6</b>	<b>102,5</b>	<b>120,9</b>	<b>124,0</b>	<b>134,9</b>
0 3.1	Fodder maize	0	36	125,0	147,1	152,8	154,4	153,6	129,1
0 3.9	Other forage plants	62	5.690	102,3	103,4	102,3	120,7	123,9	134,9
0 3.9.1	Hay	29	2.682	91,6	91,6	91,6	119,4	126,4	141,6
0 3.9.2	Straw	14	1.234	124,0	131,3	135,0	146,3	143,1	152,6
0 3.9.9	Other forage plants ;others	19	1.774	103,2	103,2	103,2	108,1	109,4	118,0
<b>0 4</b>	<b>Vegetables</b>	<b>351</b>	<b>31.942</b>	<b>114,3</b>	<b>84,2</b>	<b>78,7</b>	<b>86,9</b>	<b>91,1</b>	<b>111,8</b>
0 4.1	Fresh vegetables	351	31.942	114,3	84,2	78,7	86,9	91,1	111,8
0 4.1.2	Tomatoes	30	2.716	94,9	97,5	97,5	137,0	.	.
0 4.1.9	Other fresh vegetables	321	29.226	118,6	82,7	77,9	83,9	91,1	111,8
0 4.1.9	Pepper	211	19.234	117,8	77,1	70,5	74,6	.	.
0 4.1.9.1	Cabbage	24	2.209	136,0	104,0	96,0	100,0	76,0	92,0
0 4.1.9.4	Cucumbers	11	1.009	87,9	84,4	137,2	168,8	.	.
0 4.1.9.6	Onions	19	1.729	131,4	104,3	104,3	112,1	104,3	119,8
0 4.1.9.7	Beans	31	2.825	112,0	110,1	118,4	117,5	115,7	121,2
0 4.1.9	Water melon	10	936	113,1	107,4	100,2	.	.	.
0 4.1.9.9.9	Other fresh vegetable;other	14	1.283	138,9	101,3	93,6	86,3	88,7	96,3
<b>0 5</b>	<b>Potatoes</b>	<b>121</b>	<b>10.989</b>	<b>138,2</b>	<b>122,8</b>	<b>125,9</b>	<b>122,8</b>	<b>119,8</b>	<b>116,7</b>
<b>0 6</b>	<b>Fruits</b>	<b>50</b>	<b>4.567</b>	<b>112,5</b>	<b>93,0</b>	<b>96,2</b>	<b>81,2</b>	<b>92,5</b>	<b>84,2</b>
0 6.1	Fresh fruits	23	2.108	112,5	91,6	98,8	109,6	101,1	115,3
0 6.1.1	Apple	8	704	108,4	92,0	118,2	106,6	89,3	89,3
0 6.1.2	Pears	3	248	108,3	99,2	131,9	131,9	135,5	159,3
0 6.1.9	Other fresh fruit	13	1.156	113,3	91,1	78,6	104,3	95,8	125,1
0 6.1.9.2	Plums	5	491	119,8	89,4	72,5	105,1	.	.
0 6.1.9.4	Nuts and dried fruit	3	306	108,7	108,7	113,0	105,5	97,3	127,9
06.1.9.9	Other fresh fruits; other	4	359	100,8	97,6	93,4	79,9	78,5	92,7
0 6.4	Desert grapes	15	1.354	.	98,2	94,7	95,3	127,1	.
06.4.9	Wine grapes	12	1.105	.	.	.	44,9	59,6	59,6
<b>10</b>	<b>Crop Output</b>	<b>673</b>	<b>61.241</b>	<b>117,6</b>	<b>101,6</b>	<b>99,6</b>	<b>104,0</b>	<b>107,4</b>	<b>120,0</b>
<b>11</b>	<b>Animals</b>	<b>188</b>	<b>17.086</b>	<b>118,3</b>	<b>118,1</b>	<b>122,3</b>	<b>121,7</b>	<b>124,0</b>	<b>124,4</b>
11.1	Cattle	140	12.739	116,7	115,9	120,8	120,0	122,5	121,2
11.2	Pigs	9	791	135,8	136,2	136,2	137,1	133,4	140,1
11.4	Sheep	34	3.129	114,9	117,1	119,4	119,4	121,7	127,0
11.5	Poultry	4	345	169,9	167,9	172,9	170,4	181,9	182,1
11,9	Other animals	1	82	.	.	.	.	.	.
<b>12</b>	<b>Animal Products</b>	<b>140</b>	<b>12.722</b>	<b>98,0</b>	<b>100,7</b>	<b>100,8</b>	<b>105,4</b>	<b>108,2</b>	<b>109,4</b>
12.1	Milk	79	7.194	103,6	103,1	103,6	111,4	111,4	112,4
12.2	Eggs	52	4.760	88,1	96,3	96,0	96,0	103,5	105,0
12.9	Other animal products	8	768	106,7	104,6	104,6	106,7	106,7	108,7
<b>13</b>	<b>Animal Output</b>	<b>327</b>	<b>29.808</b>	<b>109,7</b>	<b>110,7</b>	<b>113,2</b>	<b>114,7</b>	<b>117,3</b>	<b>118,0</b>
<b>14</b>	<b>Total Output</b>	<b>1.000</b>	<b>91.049</b>	<b>115,0</b>	<b>104,6</b>	<b>104,0</b>	<b>107,5</b>	<b>110,6</b>	<b>119,3</b>

**Table 24 ; Monthly Agricultural Output Price Index (Kosovo disposition) Jan-Jun 2011, (2005 = 100)**

Item code	Groups	Weight in %	Weight 1000 Euro	2011					
				Jan	Feb	Mar	Apr	Maj	Jun
<b>0 1</b>	<b>Cereals</b>	<b>88</b>	<b>8.018</b>	<b>170,9</b>	<b>174,2</b>	<b>176,2</b>	<b>175,6</b>	<b>180,7</b>	<b>181,4</b>
0 1.1	Wheat	45	4.105	189,4	189,4	192,5	192,5	194,5	191,5
0 1.3	Barley	10	904	150,2	166,9	158,6	166,9	155,0	155,0
0 1.5	Maize	31	2.818	151,7	155,7	159,8	155,7	170,4	176,9
0 1.9	Other cereals	2	191	153,8	152,1	153,0	146,0	156,7	157,7
<b>0 3</b>	<b>Forage plants</b>	<b>63</b>	<b>5.726</b>	<b>132,7</b>	<b>143,9</b>	<b>140,8</b>	<b>147,6</b>	<b>151,0</b>	<b>141,6</b>
0 3.1	Fodder maize	0	36	151,2	156,1	160,2	159,3	170,8	177,3
0 3.9	Other forage plants	62	5.690	132,6	143,9	140,7	147,6	150,8	141,0
0 3.9.1	Hay	29	2.682	140,2	156,9	148,6	145,8	137,5	125,0
0 3.9.2	Straw	14	1.234	149,5	161,6	149,5	165,6	165,6	157,5
0 3.9.9	Other forage plants ;others	19	1.774	115,1	118,9	126,4	125,1	122,6	115,1
<b>0 4</b>	<b>Vegetables</b>	<b>351</b>	<b>31.942</b>	<b>116,0</b>	<b>135,3</b>	<b>127,3</b>	<b>126,9</b>	<b>132,7</b>	<b>141,9</b>
0 4.1	Fresh vegetables	351	31.942	116,0	135,3	127,3	126,9	132,7	141,9
0 4.1.2	Tomatoes	30	2.716	.	.	.	.	184,5	115,9
0 4.1.9	Other fresh vegetables	321	29.226	116,0	135,3	127,3	126,9	113,9	146,8
0 4.1.9	Pepper	211	19.234	.	.	.	.	90,3	154,4
0 4.1.9.1	Cabbage	24	2.209	104,0	180,0	.	.	.	116,0
0 4.1.9.4	Cucumbers	11	1.009	.	.	.	.	123,1	109,0
0 4.1.9.6	Onions	19	1.729	121,7	135,3	135,3	143,0	177,8	166,2
0 4.1.9.7	Beans	31	2.825	124,9	117,5	118,4	112,0	112,0	116,6
0 4.1.9	Water melon	10	936	.	.	.	.	.	.
0 4.1.9.9.9	Other fresh vegetable;other	14	1.283	93,9	104,4	160,0	138,2	151,5	153,3
<b>0 5</b>	<b>Potatoes</b>	<b>121</b>	<b>10.989</b>	<b>119,8</b>	<b>190,4</b>	<b>202,7</b>	<b>215,0</b>	<b>233,4</b>	<b>156,6</b>
<b>0 6</b>	<b>Fruits</b>	<b>50</b>	<b>4.567</b>	<b>112,4</b>	<b>103,1</b>	<b>143,5</b>	<b>156,5</b>	<b>167,7</b>	<b>105,5</b>
0 6.1	Fresh fruits	23	2.108	112,4	103,1	143,5	156,5	167,7	105,5
0 6.1.1	Apple	8	704	86,5	100,9	.	.	.	.
0 6.1.2	Pears	3	248	133,7	.	.	.	.	.
0 6.1.9	Other fresh fruit	13	1.156	147,0	120,9	143,5	156,5	167,7	105,5
0 6.1.9.2	Plums	5	491	.	.	.	.	.	.
0 6.1.9.4	Nuts and dried fruit	3	306	150,4	130,4	143,5	156,5	156,5	160,9
0 6.1.9.9	Other fresh fruits; other	4	359	77,1	81,8	.	.	168,5	103,6
0 6.4	Desert grapes	15	1.354	.	.	.	.	.	.
06.4.9	Wine grapes	12	1.105	.	.	.	.	.	.
<b>10</b>	<b>Crop Output</b>	<b>673</b>	<b>61.241</b>	<b>125,2</b>	<b>148,7</b>	<b>149,7</b>	<b>153,2</b>	<b>161,4</b>	<b>147,0</b>
<b>11</b>	<b>Animals</b>	<b>188</b>	<b>17.086</b>	<b>120,1</b>	<b>121,3</b>	<b>124,5</b>	<b>123,1</b>	<b>123,0</b>	<b>120,5</b>
11.1	Cattle	140	12.739	116,3	119,2	124,6	121,2	120,8	119,2
11.2	Pigs	9	791	135,9	131,0	131,0	132,2	132,2	123,9
11.4	Sheep	34	3.129	124,7	120,2	115,6	120,9	122,4	117,9
11.5	Poultry	4	345	184,6	189,1	185,9	192,1	185,9	184,1
11,9	Other animals	1	82	120,1	121,3	124,5	123,1	123,0	120,5
<b>12</b>	<b>Animal Products</b>	<b>140</b>	<b>12.722</b>	<b>107,4</b>	<b>108,0</b>	<b>109,4</b>	<b>110,3</b>	<b>110,2</b>	<b>107,1</b>
12.1	Milk	79	7.194	110,4	109,8	110,9	112,4	111,4	108,3
12.2	Eggs	52	4.760	102,2	112,8	119,0	119,0	119,0	119,0
12.9	Other animal products	8	768	112,8	112,8	119,0	119,0	119,0	119,0
<b>13</b>	<b>Animal Output</b>	<b>327</b>	<b>29.808</b>	<b>114,7</b>	<b>115,6</b>	<b>118,0</b>	<b>117,7</b>	<b>117,5</b>	<b>114,8</b>
<b>14</b>	<b>Total Output</b>	<b>1.000</b>	<b>91.049</b>	<b>121,7</b>	<b>137,9</b>	<b>139,3</b>	<b>141,6</b>	<b>147,0</b>	<b>136,4</b>

**Table 25 ; Monthly Agricultural Output Price Index (Kosovo disposition) Jul-Dec 2011, (2005 = 100)**

Item code	Groups	Weight in %	Weight 1000 Euro	2011					
				Jul	Aug	Sep	Oct	Nov	Dec
<b>0 1</b>	<b>Cereals</b>	<b>88</b>	<b>8.018</b>	<b>164,4</b>	<b>178,2</b>	<b>170,9</b>	<b>173,1</b>	<b>168,8</b>	<b>168,1</b>
0 1.1	Wheat	45	4.105	160,2	167,3	165,3	170,3	170,3	172,0
0 1.3	Barley	10	904	166,0	160,7	156,5	174,9	174,9	176,1
0 1.5	Maize	31	2.818	171,2	202,2	185,1	177,8	165,5	160,6
0 1.9	Other cereals	2	191	144,1	140,0	152,0	156,6	156,9	156,2
<b>0 3</b>	<b>Forage plants</b>	<b>63</b>	<b>5.726</b>	<b>114,0</b>	<b>117,9</b>	<b>112,3</b>	<b>120,3</b>	<b>134,3</b>	<b>135,7</b>
0 3.1	Fodder maize	0	36	171,6	202,6	185,5	178,1	165,9	161,0
0 3.9	Other forage plants	62	5.690	113,6	117,4	111,9	119,9	134,1	135,5
0 3.9.1	Hay	29	2.682	123,6	118,9	113,9	121,8	138,9	140,2
0 3.9.2	Straw	14	1.234	97,0	125,2	121,2	126,0	139,3	139,3
0 3.9.9	Other forage plants ;others	19	1.774	110,1	110,1	104,8	113,6	124,0	126,9
<b>0 4</b>	<b>Vegetables</b>	<b>351</b>	<b>31.942</b>	<b>99,1</b>	<b>78,5</b>	<b>72,8</b>	<b>87,6</b>	<b>104,4</b>	<b>117,8</b>
0 4.1	Fresh vegetables	351	31.942	99,1	78,5	72,8	87,6	104,4	117,8
0 4.1.2	Tomatoes	30	2.716	87,0	58,0	56,7	92,2	.	.
0 4.1.9	Other fresh vegetables	321	29.226	101,8	80,8	73,5	87,4	104,4	117,8
0 4.1.9	Pepper	211	19.234	103,9	77,6	66,3	82,0	.	.
0 4.1.9.1	Cabbage	24	2.209	80,0	85,6	80,0	84,0	96,0	120,0
0 4.1.9.4	Cucumbers	11	1.009	63,3	93,2	126,6	126,6	.	.
0 4.1.9.6	Onions	19	1.729	119,8	112,1	104,3	112,1	100,5	99,7
0 4.1.9.7	Beans	31	2.825	113,8	119,4	135,1	136,9	134,2	134,2
0 4.1.9	Water melon	10	936	93,8	70,2	96,6	.	.	.
0 4.1.9.9.9	Other fresh vegetable;other	14	1.283	103,5	87,1	59,5	73,4	68,7	91,3
<b>0 5</b>	<b>Potatoes</b>	<b>121</b>	<b>10.989</b>	<b>116,7</b>	<b>95,2</b>	<b>101,4</b>	<b>106,3</b>	<b>103,2</b>	<b>108,1</b>
<b>0 6</b>	<b>Fruits</b>	<b>50</b>	<b>4.567</b>	<b>117,4</b>	<b>94,4</b>	<b>108,3</b>	<b>92,7</b>	<b>96,0</b>	<b>91,4</b>
0 6.1	Fresh fruits	23	2.108	117,4	89,1	92,8	115,5	118,8	131,6
0 6.1.1	Apple	8	704	144,6	116,5	106,6	103,7	98,8	98,0
0 6.1.2	Pears	3	248	109,7	108,3	128,2	137,4	148,4	148,4
0 6.1.9	Other fresh fruit	13	1.156	113,9	83,3	75,7	117,1	127,9	170,9
0 6.1.9.2	Plums	5	491	113,8	75,2	65,0	95,8	.	.
0 6.1.9.4	Nuts and dried fruit	3	306	191,3	221,7	156,5	154,5	132,4	179,0
06.1.9.9	Other fresh fruits; other	4	359	109,5	110,4	94,4	75,6	75,7	78,2
0 6.4	Desert grapes	15	1.354	.	113,8	117,2	123,4	123,4	.
06.4.9	Wine grapes	12	1.105	.	.	.	44,9	59,6	59,6
<b>10</b>	<b>Crop Output</b>	<b>673</b>	<b>61.241</b>	<b>113,6</b>	<b>99,4</b>	<b>97,1</b>	<b>105,6</b>	<b>114,8</b>	<b>122,3</b>
<b>11</b>	<b>Animals</b>	<b>188</b>	<b>17.086</b>	<b>124,1</b>	<b>128,8</b>	<b>130,2</b>	<b>126,5</b>	<b>127,6</b>	<b>128,0</b>
11.1	Cattle	140	12.739	121,7	127,4	129,1	125,0	127,0	128,3
11.2	Pigs	9	791	131,0	136,4	139,3	140,1	124,3	121,3
11.4	Sheep	34	3.129	125,5	126,2	126,2	122,4	123,2	120,9
11.5	Poultry	4	345	187,9	186,6	185,4	190,8	195,3	196,1
11,9	Other animals	1	82	124,1	128,8	130,2	126,5	127,6	128,0
<b>12</b>	<b>Animal Products</b>	<b>140</b>	<b>12.722</b>	<b>105,3</b>	<b>113,8</b>	<b>111,9</b>	<b>108,4</b>	<b>112,1</b>	<b>117,9</b>
12.1	Milk	79	7.194	107,3	109,3	108,8	109,8	113,0	116,1
12.2	Eggs	52	4.760	114,9	116,9	114,9	114,9	114,9	119,0
12.9	Other animal products	8	768	114,9	116,9	114,9	114,9	114,9	119,0
<b>13</b>	<b>Animal Output</b>	<b>327</b>	<b>29.808</b>	<b>116,1</b>	<b>122,4</b>	<b>122,4</b>	<b>118,8</b>	<b>121,0</b>	<b>123,7</b>
<b>14</b>	<b>Total Output</b>	<b>1.000</b>	<b>91.049</b>	<b>114,4</b>	<b>106,9</b>	<b>105,4</b>	<b>109,9</b>	<b>116,8</b>	<b>122,8</b>

Table 26 ; Monthly Agricultural Output Price Index (Kosovo disposition) Jan-Jun 2012, (2005 = 100)

Item code	Groups	Weight in %	Weight 1000 Euro	2012					
				Jan	Feb	Mar	Apr	Maj	Jun
<b>0 1</b>	<b>Cereals</b>	<b>88</b>	<b>8.018</b>	<b>171,2</b>	<b>173,8</b>	<b>168,6</b>	<b>168,5</b>	<b>170,0</b>	<b>170,8</b>
0 1.1	Wheat	45	4.105	173,7	175,4	177,0	173,7	174,2	173,8
0 1.3	Barley	10	904	176,1	185,5	179,3	186,3	188,2	188,2
0 1.5	Maize	31	2.818	167,2	168,8	153,3	155,7	158,2	161,4
0 1.9	Other cereals	2	191	156,7	160,5	163,9	160,4	168,5	161,5
<b>0 3</b>	<b>Forage plants</b>	<b>63</b>	<b>5.726</b>	<b>143,9</b>	<b>156,4</b>	<b>154,0</b>	<b>143,9</b>	<b>135,4</b>	<b>133,6</b>
0 3.1	Fodder maize	0	36	167,5	169,1	153,6	156,1	153,6	161,8
0 3.9	Other forage plants	62	5.690	143,8	156,3	154,0	143,9	135,2	133,1
0 3.9.1	Hay	29	2.682	151,3	166,6	162,5	150,0	140,2	127,7
0 3.9.2	Straw	14	1.234	147,3	167,2	167,2	147,3	138,1	142,2
0 3.9.9	Other forage plants ;others	19	1.774	131,1	137,5	137,5	130,0	118,3	114,0
<b>0 4</b>	<b>Vegetables</b>	<b>351</b>	<b>31.942</b>	<b>124,9</b>	<b>146,3</b>	<b>128,3</b>	<b>116,4</b>	<b>147,2</b>	<b>164,8</b>
0 4.1	Fresh vegetables	351	31.942	124,9	146,3	128,3	116,4	147,2	164,8
0 4.1.2	Tomatoes	30	2.716	.	.	.	.	197,6	163,4
0 4.1.9	Other fresh vegetables	321	29.226	124,9	146,3	128,3	116,4	128,9	165,0
0 4.1.9	Pepper	211	19.234	.	.	.	.	127,4	183,5
0 4.1.9.1	Cabbage	24	2.209	148,0	228,0	.	.	.	136,0
0 4.1.9.4	Cucumbers	11	1.009	.	.	.	.	154,7	123,1
0 4.1.9.6	Onions	19	1.729	109,4	113,2	109,4	92,8	98,6	106,3
0 4.1.9.7	Beans	31	2.825	138,8	138,8	143,4	138,8	143,4	136,9
0 4.1.9	Water melon	10	936	.	.	.	.	.	.
0 4.1.9.9.9	Other fresh vegetable;other	14	1.283	64,9	72,6	114,8	96,2	109,3	123,8
<b>0 5</b>	<b>Potatoes</b>	<b>121</b>	<b>10.989</b>	<b>112,4</b>	<b>121,6</b>	<b>106,3</b>	<b>69,4</b>	<b>59,0</b>	<b>162,8</b>
<b>0 6</b>	<b>Fruits</b>	<b>50</b>	<b>4.567</b>	<b>136,6</b>	<b>103,6</b>	<b>152,2</b>	<b>152,2</b>	<b>189,9</b>	<b>140,7</b>
0 6.1	Fresh fruits	23	2.108	136,6	103,6	152,2	152,2	189,9	140,7
0 6.1.1	Apple	8	704	95,1	100,9	.	.	.	.
0 6.1.2	Pears	3	248	174,0	.	.	.	.	.
0 6.1.9	Other fresh fruit	13	1.156	190,0	125,3	152,2	152,2	189,9	140,7
0 6.1.9.2	Plums	5	491	.	.	.	.	.	.
0 6.1.9.4	Nuts and dried fruit	3	306	195,9	139,1	152,2	152,2	143,5	152,2
0 6.1.9.9	Other fresh fruits; other	4	359	66,2	68,6	.	.	193,5	140,3
0 6.4	Desert grapes	15	1.354	.	.	.	.	.	.
06.4.9	Wine grapes	12	1.105	.	.	.	.	.	.
<b>10</b>	<b>Crop Output</b>	<b>673</b>	<b>61.241</b>	<b>131,3</b>	<b>143,2</b>	<b>133,8</b>	<b>120,0</b>	<b>136,4</b>	<b>160,5</b>
<b>11</b>	<b>Animals</b>	<b>188</b>	<b>17.086</b>	<b>128,3</b>	<b>132,1</b>	<b>130,4</b>	<b>130,0</b>	<b>129,5</b>	<b>133,1</b>
11.1	Cattle	140	12.739	128,3	132,8	129,9	128,7	128,7	130,8
11.2	Pigs	9	791	123,7	123,7	126,2	135,9	135,9	154,1
11.4	Sheep	34	3.129	123,2	124,7	127,0	127,0	124,7	130,7
11.5	Poultry	4	345	185,4	191,6	187,9	191,6	187,9	191,6
11,9	Other animals	1	82	128,3	132,1	130,4	130,0	129,5	133,1
<b>12</b>	<b>Animal Products</b>	<b>140</b>	<b>12.722</b>	<b>117,3</b>	<b>118,4</b>	<b>126,7</b>	<b>121,4</b>	<b>116,4</b>	<b>108,4</b>
12.1	Milk	79	7.194	114,5	114,5	114,0	115,0	114,0	112,4
12.2	Eggs	52	4.760	123,1	119,0	119,0	119,0	119,0	119,0
12.9	Other animal products	8	768	123,1	119,0	119,0	119,0	119,0	119,0
<b>13</b>	<b>Animal Output</b>	<b>327</b>	<b>29.808</b>	<b>123,6</b>	<b>126,3</b>	<b>128,8</b>	<b>126,3</b>	<b>123,9</b>	<b>122,5</b>
<b>14</b>	<b>Total Output</b>	<b>1.000</b>	<b>91.049</b>	<b>128,8</b>	<b>137,7</b>	<b>132,2</b>	<b>122,1</b>	<b>132,3</b>	<b>148,1</b>



Table 27 ; Monthly Agricultural Output Price Index (Kosovo disposition) Jul-Dec 2012, (2005 = 100)

Item code	Groups	Weight in %	Weight 1000 Euro	2012					
				Jul	Aug	Sep	Oct	Nov	Dec
<b>0 1</b>	<b>Cereals</b>	<b>88</b>	<b>8.018</b>	<b>170,4</b>	<b>183,0</b>	<b>180,9</b>	<b>185,2</b>	<b>186,6</b>	<b>192,2</b>
0 1.1	Wheat	45	4.105	173,3	187,4	185,4	194,5	194,5	199,5
0 1.3	Barley	10	904	175,7	181,4	182,8	189,1	190,2	201,8
0 1.5	Maize	31	2.818	165,5	180,2	176,1	172,9	176,1	181,0
0 1.9	Other cereals	2	191	153,4	134,8	144,2	147,9	155,3	153,8
<b>0 3</b>	<b>Forage plants</b>	<b>63</b>	<b>5.726</b>	<b>138,2</b>	<b>156,1</b>	<b>162,3</b>	<b>183,8</b>	<b>190,6</b>	<b>201,7</b>
0 3.1	Fodder maize	0	36	170,8	180,6	176,5	173,2	176,5	181,4
0 3.9	Other forage plants	62	5.690	138,0	156,0	162,3	183,8	190,7	201,9
0 3.9.1	Hay	29	2.682	140,2	161,1	168,0	195,8	201,3	218,0
0 3.9.2	Straw	14	1.234	152,8	171,8	187,4	190,5	199,9	211,6
0 3.9.9	Other forage plants ;others	19	1.774	124,2	138,1	141,9	162,0	169,5	173,7
<b>0 4</b>	<b>Vegetables</b>	<b>351</b>	<b>31.942</b>	<b>107,1</b>	<b>79,4</b>	<b>92,6</b>	<b>98,1</b>	<b>123,4</b>	<b>139,4</b>
0 4.1	Fresh vegetables	351	31.942	107,1	79,4	92,6	98,1	123,4	139,4
0 4.1.2	Tomatoes	30	2.716	123,8	100,1	130,4	110,7	.	.
0 4.1.9	Other fresh vegetables	321	29.226	103,3	77,1	91,0	97,4	123,4	139,4
0 4.1.9	Pepper	211	19.234	98,3	67,5	81,4	79,7	.	.
0 4.1.9.1	Cabbage	24	2.209	152,0	120,0	144,0	152,0	104,0	116,0
0 4.1.9.4	Cucumbers	11	1.009	80,2	95,0	151,2	133,6	.	.
0 4.1.9.6	Onions	19	1.729	99,7	95,8	117,1	123,7	127,5	135,3
0 4.1.9.7	Beans	31	2.825	138,8	152,7	178,6	186,9	173,9	171,2
0 4.1.9	Water melon	10	936	125,3	103,8	111,0	.	.	.
0 4.1.9.9.9	Other fresh vegetable;other	14	1.283	128,6	92,9	76,4	77,0	79,5	76,9
<b>0 5</b>	<b>Potatoes</b>	<b>121</b>	<b>10.989</b>	<b>124,7</b>	<b>141,3</b>	<b>150,5</b>	<b>158,5</b>	<b>162,8</b>	<b>162,8</b>
<b>0 6</b>	<b>Fruits</b>	<b>50</b>	<b>4.567</b>	<b>119,1</b>	<b>96,5</b>	<b>97,8</b>	<b>97,2</b>	<b>108,9</b>	<b>91,8</b>
0 6.1	Fresh fruits	23	2.108	119,1	90,5	108,2	126,5	148,7	150,9
0 6.1.1	Apple	8	704	140,6	112,4	126,8	109,5	113,8	108,1
0 6.1.2	Pears	3	248	105,6	95,8	128,2	128,2	152,0	174,0
0 6.1.9	Other fresh fruit	13	1.156	116,6	86,5	91,6	139,2	194,8	199,8
0 6.1.9.2	Plums	5	491	109,7	71,1	77,2	111,7	.	.
0 6.1.9.4	Nuts and dried fruit	3	306	167,0	169,6	173,9	188,0	203,8	209,3
06.1.9.9	Other fresh fruits; other	4	359	127,0	150,6	125,9	79,2	88,6	91,6
0 6.4	Desert grapes	15	1.354	.	118,4	91,8	127,1	157,0	.
06.4.9	Wine grapes	12	1.105	.	.	.	44,9	44,9	44,9
<b>10</b>	<b>Crop Output</b>	<b>673</b>	<b>61.241</b>	<b>122,3</b>	<b>112,5</b>	<b>121,5</b>	<b>128,3</b>	<b>143,9</b>	<b>152,8</b>
<b>11</b>	<b>Animals</b>	<b>188</b>	<b>17.086</b>	<b>133,5</b>	<b>137,3</b>	<b>135,4</b>	<b>133,8</b>	<b>133,1</b>	<b>137,4</b>
11.1	Cattle	140	12.739	133,7	136,1	134,9	132,4	131,6	137,0
11.2	Pigs	9	791	139,5	141,9	141,9	137,1	138,3	138,3
11.4	Sheep	34	3.129	125,5	134,5	129,2	130,7	131,5	133,0
11.5	Poultry	4	345	185,4	194,8	194,1	204,5	192,1	193,5
11,9	Other animals	1	82	133,5	137,3	135,4	133,8	133,1	137,4
<b>12</b>	<b>Animal Products</b>	<b>140</b>	<b>12.722</b>	<b>114,5</b>	<b>120,7</b>	<b>122,9</b>	<b>123,8</b>	<b>122,0</b>	<b>127,2</b>
12.1	Milk	79	7.194	113,5	116,1	118,1	118,1	119,7	123,3
12.2	Eggs	52	4.760	123,1	123,1	123,1	127,2	127,2	127,2
12.9	Other animal products	8	768	123,1	123,1	123,1	127,2	127,2	127,2
<b>13</b>	<b>Animal Output</b>	<b>327</b>	<b>29.808</b>	<b>125,4</b>	<b>130,2</b>	<b>130,0</b>	<b>129,5</b>	<b>128,4</b>	<b>133,1</b>
<b>14</b>	<b>Total Output</b>	<b>1.000</b>	<b>91.049</b>	<b>123,3</b>	<b>118,3</b>	<b>124,3</b>	<b>128,7</b>	<b>138,8</b>	<b>146,3</b>

**Table 28; Monthly Agricultural Output Price Index (Kosovo disposition) Jan-Jun 2013, (2005 = 100)**

Item code	Groups	Weight in %	Weight 1000 Euro	2013					
				Jan	Feb	Mar	Apr	Maj	Jun
<b>0 1</b>	<b>Cereals</b>	<b>88</b>	<b>8.018</b>	<b>192,7</b>	<b>193,8</b>	<b>194,5</b>	<b>193,2</b>	<b>200,1</b>	<b>195,1</b>
0 1.1	Wheat	45	4.105	195,5	195,5	194,5	191,5	202,5	197,5
0 1.3	Barley	10	904	197,1	208,7	219,2	214,8	214,0	204,6
0 1.5	Maize	31	2.818	189,2	187,5	186,7	186,7	190,0	187,5
0 1.9	Other cereals	2	191	165,7	179,0	194,4	222,8	229,3	209,7
<b>0 3</b>	<b>Forage plants</b>	<b>63</b>	<b>5.726</b>	<b>195,0</b>	<b>187,7</b>	<b>191,0</b>	<b>171,5</b>	<b>165,2</b>	<b>158,2</b>
0 3.1	Fodder maize	0	36	189,6	187,9	187,1	187,1	190,4	187,9
0 3.9	Other forage plants	62	5.690	195,0	187,7	191,0	171,4	164,9	157,7
0 3.9.1	Hay	29	2.682	211,1	201,3	208,3	190,2	184,7	176,3
0 3.9.2	Straw	14	1.234	198,8	193,7	186,1	163,1	160,6	152,9
0 3.9.9	Other forage plants ;others	19	1.774	169,5	165,2	166,3	154,5	149,2	143,9
<b>0 4</b>	<b>Vegetables</b>	<b>351</b>	<b>31.942</b>	<b>137,2</b>	<b>139,1</b>	<b>147,9</b>	<b>151,9</b>	<b>136,3</b>	<b>178,9</b>
0 4.1	Fresh vegetables	351	31.942	137,2	139,1	147,9	151,9	136,3	178,9
0 4.1.2	Tomatoes	30	2.716	.	.	.	.	123,8	108,0
0 4.1.9	Other fresh vegetables	321	29.226	137,2	139,1	147,9	151,9	140,8	192,2
0 4.1.9	Pepper	211	19.234	.	.	.	.	127,4	206,9
0 4.1.9.1	Cabbage	24	2.209	112,0	112,0	.	.	.	244,0
0 4.1.9.4	Cucumbers	11	1.009	.	.	.	.	140,7	92,5
0 4.1.9.6	Onions	19	1.729	139,1	143,0	139,1	154,6	166,2	154,6
0 4.1.9.7	Beans	31	2.825	166,5	166,5	158,2	155,4	161,9	163,8
0 4.1.9	Water melon	10	936	.	.	.	.	.	.
0 4.1.9.9.9	Other fresh vegetable;other	14	1.283	72,3	75,4	105,1	101,0	135,3	142,0
<b>0 5</b>	<b>Potatoes</b>	<b>121</b>	<b>10.989</b>	<b>172,0</b>	<b>175,1</b>	<b>168,9</b>	<b>162,8</b>	<b>172,0</b>	<b>294,8</b>
<b>0 6</b>	<b>Fruits</b>	<b>50</b>	<b>4.567</b>	<b>153,9</b>	<b>111,4</b>	<b>165,2</b>	<b>165,2</b>	<b>143,1</b>	<b>139,6</b>
0 6.1	Fresh fruits	23	2.108	153,9	111,4	165,2	165,2	143,1	139,6
0 6.1.1	Apple	8	704	109,5	106,6	.	.	.	.
0 6.1.2	Pears	3	248	190,5	.	.	.	.	.
0 6.1.9	Other fresh fruit	13	1.156	213,2	148,3	165,2	165,2	143,1	139,6
0 6.1.9.2	Plums	5	491	.	.	.	.	.	.
0 6.1.9.4	Nuts and dried fruit	3	306	219,9	165,2	165,2	165,2	169,6	165,2
0 6.1.9.9	Other fresh fruits; other	4	359	74,0	79,0	.	.	141,1	138,7
0 6.4	Desert grapes	15	1.354	.	.	.	.	.	.
06.4.9	Wine grapes	12	1.105	.	.	.	.	.	.
<b>10</b>	<b>Crop Output</b>	<b>673</b>	<b>61.241</b>	<b>157,3</b>	<b>155,2</b>	<b>163,1</b>	<b>162,1</b>	<b>154,3</b>	<b>197,0</b>
<b>11</b>	<b>Animals</b>	<b>188</b>	<b>17.086</b>	<b>135,8</b>	<b>134,2</b>	<b>134,7</b>	<b>134,3</b>	<b>137,4</b>	<b>134,7</b>
11.1	Cattle	140	12.739	134,5	132,4	132,4	131,2	134,9	132,0
11.2	Pigs	9	791	149,2	148,3	152,9	161,9	165,5	161,9
11.4	Sheep	34	3.129	130,7	130,7	133,0	132,3	132,3	132,3
11.5	Poultry	4	345	198,6	199,5	193,8	207,0	211,5	194,8
11,9	Other animals	1	82	135,8	134,2	134,7	134,3	137,4	134,7
<b>12</b>	<b>Animal Products</b>	<b>140</b>	<b>12.722</b>	<b>126,0</b>	<b>125,8</b>	<b>124,2</b>	<b>118,4</b>	<b>114,8</b>	<b>116,9</b>
12.1	Milk	79	7.194	124,4	123,8	124,9	122,8	122,3	122,3
12.2	Eggs	52	4.760	125,1	125,1	125,1	123,1	123,1	123,1
12.9	Other animal products	8	768	125,1	125,1	125,1	123,1	123,1	123,1
<b>13</b>	<b>Animal Output</b>	<b>327</b>	<b>29.808</b>	<b>131,6</b>	<b>130,6</b>	<b>130,2</b>	<b>127,5</b>	<b>127,7</b>	<b>127,1</b>
<b>14</b>	<b>Total Output</b>	<b>1.000</b>	<b>91.049</b>	<b>148,9</b>	<b>147,1</b>	<b>152,3</b>	<b>150,8</b>	<b>145,6</b>	<b>174,1</b>

**Table 29 ; Monthly Agricultural Output Price Index (Kosovo disposition) Jul-Dec 2013, (2005 = 100)**

Item code	Groups	Weight in %	Weight 1000 Euro	2013					
				Jul	Aug	Sep	Oct	Nov	Dec
<b>0 1</b>	<b>Cereals</b>	<b>88</b>	<b>8.018</b>	<b>168,8</b>	<b>157,4</b>	<b>147,9</b>	<b>148,1</b>	<b>149,5</b>	<b>153,5</b>
0 1.1	Wheat	45	4.105	150,1	127,0	127,0	127,0	133,0	138,0
0 1.3	Barley	10	904	200,6	200,6	195,9	200,6	200,6	206,2
0 1.5	Maize	31	2.818	183,5	185,9	162,3	161,4	156,6	159,0
0 1.9	Other cereals	2	191	200,7	188,2	159,1	158,5	158,8	156,2
<b>0 3</b>	<b>Forage plants</b>	<b>63</b>	<b>5.726</b>	<b>148,9</b>	<b>150,9</b>	<b>147,1</b>	<b>148,7</b>	<b>153,0</b>	<b>153,1</b>
0 3.1	Fodder maize	0	36	183,9	186,3	162,6	161,8	161,0	159,3
0 3.9	Other forage plants	62	5.690	148,6	150,7	147,0	148,6	152,9	153,0
0 3.9.1	Hay	29	2.682	159,7	162,5	156,9	159,7	165,2	162,5
0 3.9.2	Straw	14	1.234	145,3	145,3	137,6	135,1	137,6	145,3
0 3.9.9	Other forage plants ;others	19	1.774	134,3	136,4	136,4	139,6	142,8	141,7
<b>0 4</b>	<b>Vegetables</b>	<b>351</b>	<b>31.942</b>	<b>113,8</b>	<b>89,0</b>	<b>92,9</b>	<b>121,5</b>	<b>112,5</b>	<b>133,1</b>
0 4.1	Fresh vegetables	351	31.942	113,8	89,0	92,9	121,5	112,5	133,1
0 4.1.2	Tomatoes	30	2.716	92,2	84,3	110,7	129,1	.	.
0 4.1.9	Other fresh vegetables	321	29.226	118,6	89,5	92,1	121,1	112,5	133,1
0 4.1.9	Pepper	211	19.234	118,3	82,7	86,3	122,0	.	.
0 4.1.9.1	Cabbage	24	2.209	116,0	84,0	93,6	80,0	84,0	84,0
0 4.1.9.4	Cucumbers	11	1.009	92,5	98,5	133,6	172,3	.	.
0 4.1.9.6	Onions	19	1.729	139,1	123,7	127,5	127,5	123,7	119,8
0 4.1.9.7	Beans	31	2.825	164,7	177,6	166,5	180,4	175,8	180,4
0 4.1.9	Water melon	10	936	114,5	96,6	93,1	.	.	.
0 4.1.9.9.9	Other fresh vegetable;other	14	1.283	108,2	96,1	69,2	81,0	75,0	72,4
<b>0 5</b>	<b>Potatoes</b>	<b>121</b>	<b>10.989</b>	<b>208,8</b>	<b>193,5</b>	<b>184,3</b>	<b>181,2</b>	<b>178,1</b>	<b>178,1</b>
<b>0 6</b>	<b>Fruits</b>	<b>50</b>	<b>4.567</b>	<b>116,5</b>	<b>96,0</b>	<b>107,0</b>	<b>108,9</b>	<b>114,9</b>	<b>117,8</b>
0 6.1	Fresh fruits	23	2.108	116,5	92,5	99,3	115,3	124,4	130,4
0 6.1.1	Apple	8	704	120,5	104,4	118,2	109,5	98,0	95,1
0 6.1.2	Pears	3	248	131,9	106,9	135,5	155,7	137,4	135,5
0 6.1.9	Other fresh fruit	13	1.156	115,1	89,6	78,7	105,9	152,8	179,9
0 6.1.9.2	Plums	5	491	109,7	77,2	58,9	87,3	.	.
0 6.1.9.4	Nuts and dried fruit	3	306	178,3	173,9	147,8	138,1	159,3	189,2
06.1.9.9	Other fresh fruits; other	4	359	121,8	139,9	141,5	74,0	76,3	74,3
0 6.4	Desert grapes	15	1.354	.	109,1	111,5	104,7	115,9	.
06.4.9	Wine grapes	12	1.105	.	.	.	107,9	107,9	107,9
<b>10</b>	<b>Crop Output</b>	<b>673</b>	<b>61.241</b>	<b>141,5</b>	<b>123,0</b>	<b>122,6</b>	<b>137,3</b>	<b>133,1</b>	<b>144,6</b>
<b>11</b>	<b>Animals</b>	<b>188</b>	<b>17.086</b>	<b>135,0</b>	<b>138,9</b>	<b>139,0</b>	<b>139,6</b>	<b>139,4</b>	<b>140,5</b>
11.1	Cattle	140	12.739	132,4	136,6	137,4	137,0	138,2	138,2
11.2	Pigs	9	791	161,9	155,6	155,6	159,2	155,6	159,2
11.4	Sheep	34	3.129	132,3	138,3	135,3	138,3	133,0	139,1
11.5	Poultry	4	345	195,8	192,8	194,1	204,8	205,3	195,3
11,9	Other animals	1	82	135,0	138,9	139,0	139,6	139,4	140,5
<b>12</b>	<b>Animal Products</b>	<b>140</b>	<b>12.722</b>	<b>116,0</b>	<b>118,0</b>	<b>116,8</b>	<b>117,2</b>	<b>117,3</b>	<b>121,4</b>
12.1	Milk	79	7.194	118,1	118,1	118,7	118,1	118,1	119,7
12.2	Eggs	52	4.760	129,2	131,3	129,2	129,2	129,2	129,2
12.9	Other animal products	8	768	129,2	131,3	129,2	129,2	129,2	129,2
<b>13</b>	<b>Animal Output</b>	<b>327</b>	<b>29.808</b>	<b>126,9</b>	<b>130,0</b>	<b>129,5</b>	<b>130,0</b>	<b>130,0</b>	<b>132,3</b>
<b>14</b>	<b>Total Output</b>	<b>1.000</b>	<b>91.049</b>	<b>136,8</b>	<b>125,3</b>	<b>124,9</b>	<b>134,9</b>	<b>132,1</b>	<b>140,6</b>

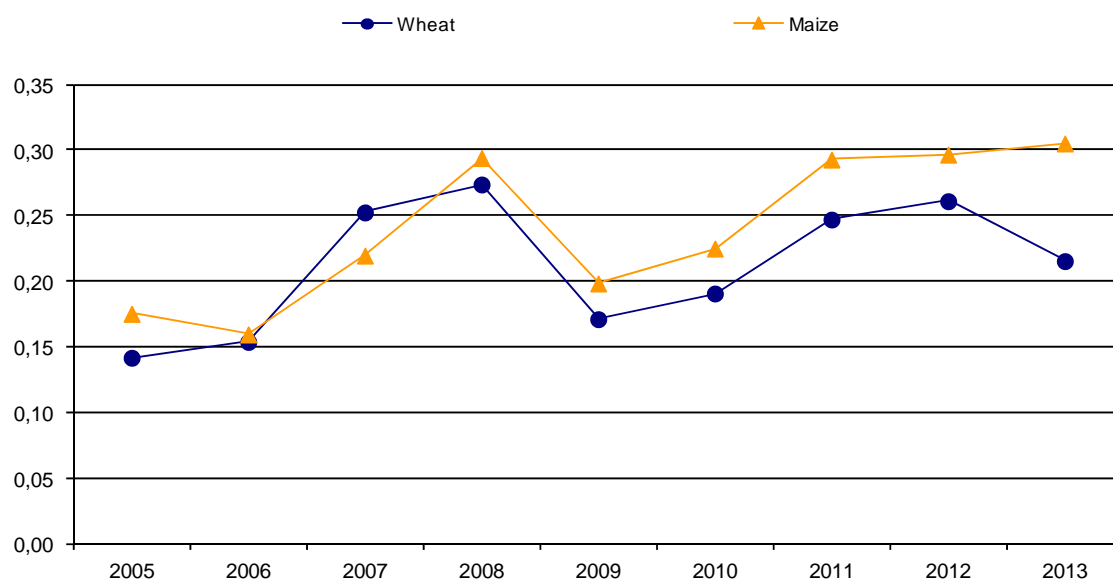
**Table 30: Annual prices Kosovo 2005-2013**

Item code	Description	2005	2006	2007	2008	2009	2010	2011	2012	2013
01.1.	Wheat <sup>1</sup>	0,14	0,15	0,25	0,27	0,17	0,19	0,25	0,26	0,22
01.3.	Barley <sup>2</sup>	0,18	0,19	0,30	0,41	0,31	0,24	0,30	0,34	0,37
01.5.	Maize <sup>3</sup>	0,18	0,16	0,22	0,29	0,20	0,22	0,29	0,30	0,31
01.2.	Rye <sup>4</sup>	0,18	0,19	0,32	0,42	0,28	0,29	0,34	0,35	0,37
01.4.	Oats <sup>5</sup>	0,22	0,24	0,39	0,45	0,28	0,25	0,32	0,33	0,38
03.9.1	Hay <sup>6</sup>	0,10	0,11	0,16	0,20	0,14	0,12	0,13	0,18	0,18
03.9.2	Straw <sup>7</sup>	0,06	0,07	0,08	0,10	0,07	0,07	0,08	0,09	0,09
03.9.9.	Lucern <sup>8</sup>	0,13	0,11	0,17	0,22	0,16	0,15	0,15	0,19	0,19
05.1.	Potatoes <sup>9</sup>	0,23	0,31	0,30	0,31	0,30	0,29	0,30	0,32	0,43
04.1.9.1	Cabbage <sup>10</sup>	0,18	0,17	0,30	0,18	0,19	0,18	0,17	0,24	0,17
04.1.9.6	Onion <sup>11</sup>	0,37	0,44	0,46	0,44	0,44	0,55	0,47	0,41	0,51
04.1.9	Pepper <sup>12</sup>	0,52	0,59	0,62	0,69	0,63	0,59	0,58	0,58	0,78
04.1.9.3	Spinach <sup>13</sup>	0,63	0,60	0,70	0,67	0,74	0,83	0,79	0,84	0,93
04.1.9.7	Beans <sup>14</sup>	1,54	1,65	1,91	2,27	2,11	1,80	1,95	2,47	2,63
04.1.2	Tomatoe <sup>15</sup>	0,54	0,63	0,67	0,57	0,61	0,62	0,50	0,71	0,56
04.1.9.4	Cucumber <sup>16</sup>	0,41	0,48	0,56	0,51	0,47	0,49	0,43	0,48	0,48
04.1.9	Watermelon <sup>17</sup>	0,20	0,16	0,20	0,18	0,19	0,21	0,17	0,22	0,19
04.1.9.9.9	Leek <sup>18</sup>	0,80	0,87	0,77	0,77	0,84	0,88	0,72	0,67	0,73
04.1.9.9.9	Garlic <sup>19</sup>	1,38	1,68	1,91	1,89	2,01	2,90	3,51	2,35	2,11
05.1.1	Apple <sup>20</sup>	0,50	0,51	0,56	0,60	0,51	0,49	0,49	0,54	0,53
05.1.2	Pear <sup>21</sup>	0,78	1,00	1,15	1,11	1,08	0,99	1,09	1,16	1,16
05.1.3	Chestnuts <sup>22</sup>	0,89	0,95	1,25	1,13	1,13	0,87	1,45	1,90	1,62
05.1.4	Grape <sup>23</sup>	0,76	0,75	0,88	0,85	0,83	0,80	0,93	0,93	0,85
05.1.9	Walnuts <sup>24</sup>	1,64	1,64	1,64	1,78	1,68	1,75	2,28	2,61	2,56
11,1	Cattle <sup>25</sup>	1,73	1,79	1,73	1,92	2,06	2,02	2,13	2,28	2,33
11,2	Pigs <sup>26</sup>	1,58	1,58	1,64	2,02	2,11	2,13	2,08	2,15	2,48
11,4	Sheep <sup>27</sup>	1,89	1,79	1,83	2,04	2,15	2,22	2,31	2,43	2,53
11,5	Chickens ( vilages) <sup>28</sup>	4,16	4,51	4,72	6,79	7,29	7,95	8,71	8,88	9,18
11.5.1	Chickens ( farms) <sup>29</sup>	1,59	1,59	1,59	1,78	1,92	1,94	2,12	2,12	2,27
12,1	Milk <sup>30</sup>	0,28	0,29	0,29	0,34	0,31	0,29	0,31	0,32	0,33
12,9	Honey <sup>31</sup>	6,96	6,93	6,69	6,82	7,21	7,42	8,11	8,52	8,83
12,2	Eggs <sup>32</sup>	2,32	2,24	2,45	2,74	2,12	2,13	2,51	2,91	2,69

1.

- 1 Wheat – is domestic, 2 Barley , 3 Maize – Hybrid 448, 4 Rye, 5 Oats , 6 Hay produced in meadow, 7 Wheat straw (Stubble wheat), 8 Lucerne, 9 potatoes, 10 Cabbage (Hybrid 4 11 Onions- second quality, 12 Pepper- variety Sombork, 13 Spinach- variety Matador, 14 Beans- second quality, 15 Tomatoes- variety Arleta, 16 Cucumber- variety Cornishon, 17 Watermelon– is domestic product, 18 Leek, 19 Garlic, 20 Apple, 21 Pear ,22 Chestnuts, 23 Grape, 24 Walnuts, 25 Live weight per 1kg for bulls and heifers aged 18-22 months domestic pedigree, 26 Live weight per 1kg for pigs aged 10-12 months domestic pedigree, 27 Live weight per 1kg for sheep domestic pedigree (white, mug) aged older than 12 months, 28 Chicken (Village)– domestic (18 weeks old), 29 Chicken (farms)– domestic (18 weeks old) , 30 Milk –price for 1litre cow milk with 3.2% fat, 31 Honey domestic product, 32 Price for 30 pieces of eggs, first class of quality

**Figure 2: Annual prices for wheat and maize 2005-2013, Euro /kg**



**Figure 3: Annual prices for hay, straw and Lucerne 2005-2013, Euro /kg**

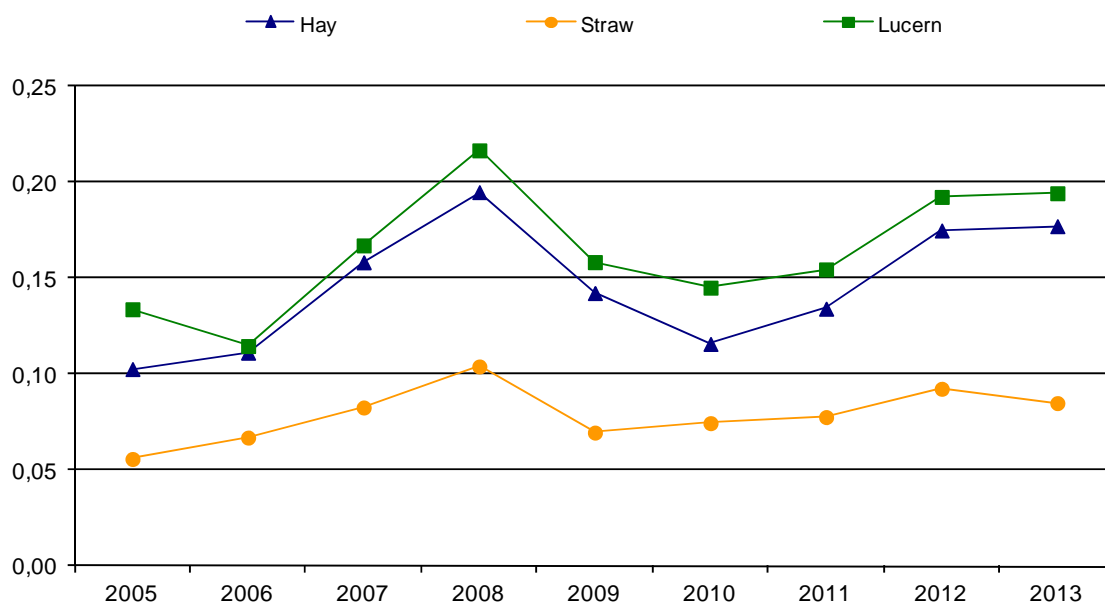


Figure 4: Annual prices for potatoes, tomatoes, pepper and cabbage 2005-2013, Euro /kg

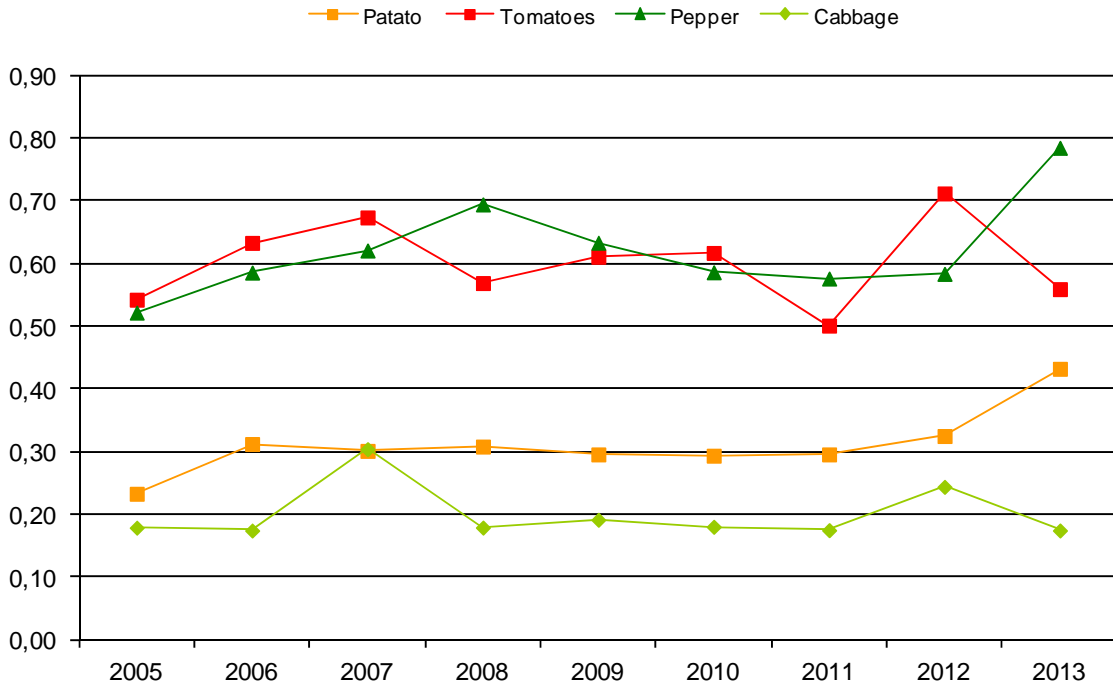
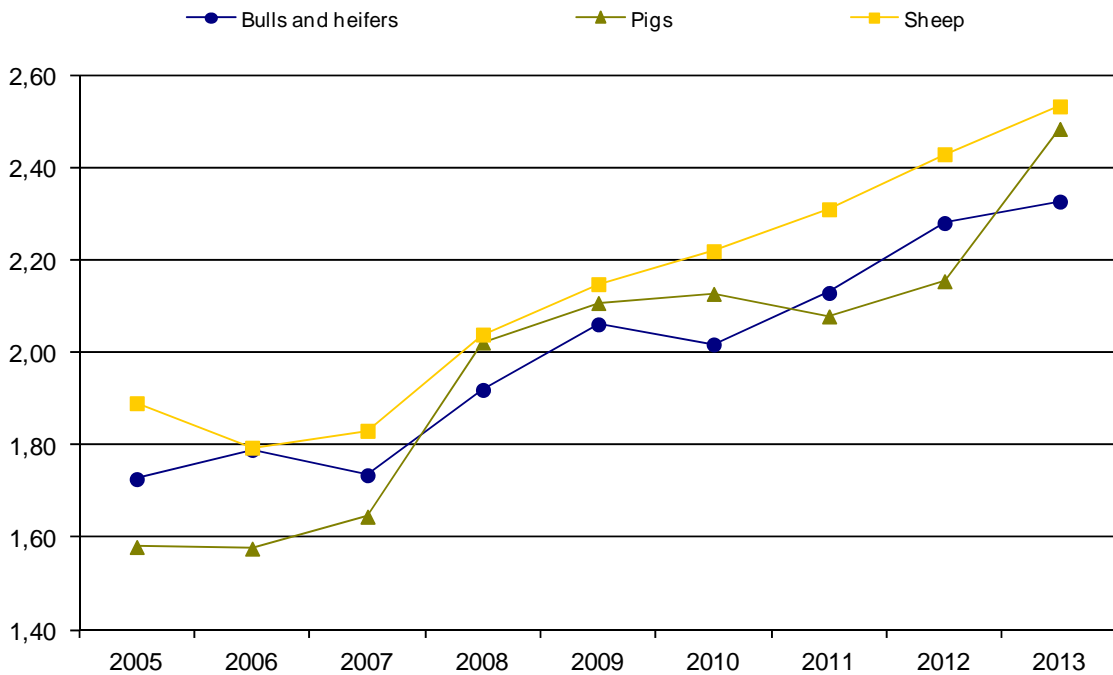


Figure 5: Annual prices for bulls and heifers, pigs and sheep (live weight price) 2005-2013, Euro /kg



## Methodology

Prices and Price indices in this publication have been calculated according standards for price statistics in European Union. The project for calculating these Prices and Price Indices was conducted in the frame of the project of “Improving agro monetary statistics” in cooperation with Statistic Sweden and with financial support by Sida (Swedish International Development Cooperation Agency).

Prices have been collected since November 2003 and are collected in seven regions: Pristina, Mitrovica , Peja, Gjakova ,Prizren, Ferizaj and Gjilan,. Prices are collected around the 15<sup>th</sup> in every month. Since the start the number of different prices that are collected have increased step by step. Therefore some prices are not available for the whole period. Prices are now collected for 64 products and measures prices that farmers receive for the part of their production that are sold. Weights to calculate aggregated indices are mainly based on Agriculture Household Survey 2005, which is the base year in the indices (2005=100). It should be pointed out that the weights, in value or promille, only reflect the part of the agricultural production in Kosovo that are sold outside the agricultural household. For some products the value of the total production can be considerably higher than what is reflected in the weights.

According to EU standards, quarterly and annual indices are supposed to be calculated by each member state. The EU indices in this publication follow the methodology developed in EU. For national needs, also a monthly index is calculated. This index is calculated slightly different from the quarterly index. In short, the monthly index does not use monthly weights on aggregated level (when calculating code 10, 13 and 14). However for most crop groups (code 01, 03, 04 and 06) monthly weights are used within the group to calculate the group aggregates. On the other hand the quarterly index have variable quarterly weights everywhere. For this reason, the monthly and the quarterly indices might have slightly different developments if they are compared. However, the EU annual index and the Kosovo annual index are exactly the same. In both cases, the index is calculated as weighted annual index with monthly respectively quarterly weights.

The total weights, quarterly weights and monthly weights are fix during the base period. They all reflect the situation that was present in 2005. By having fix weights, the index is guaranteed only to measure price movements, which is the purpose of the index.

To compare the EU index presented in this publication with other countries, the Eurostat website is recommended (<http://epp.eurostat.ec.europa.eu/portal/page/portal/eurostat/home>).

### Calculation of elementary Price Index

Calculations of elementary indices are in general done by using following formula, with un-weighted arithmetic mean price.

$$R_i^t = \frac{\frac{1}{n} \sum P_{ij}^t}{\frac{1}{n} \sum P_{ij}^o} \cdot 100$$

$R_i^t$  – Elementary index for month t and product i

P – Collected price

i – Product i

j – Price j recorded for product (in general price for region 1,2,...,n)

t – Observed month

0 – Base month

### Calculation of aggregated Price Index

Calculating aggregated index for total Output or subgroups of Output Index is done using following formula.

$$I^t = \sum \left( R_i^t \cdot \frac{w_i^0}{\sum w_i^0} \right)$$

$I^t$  – Aggregated index for period t

$w_i^0$  – Weighting factor in base period for product i

i – Product i

t – Observed month

0 – Base month



## Questionnaire

Target definition
-------------------

Item number	Item name	Quantity	Unit
Price Collector		Collection place/ Company	
Date			
Price			

<p>Enumerators notes</p> <ul style="list-style-type: none"> <li>- Detailed description of specific variety selected for re-pricing</li> <li>- Changes in the detailed description, date for changes</li> <li>- Treatment of quality change when description changed (information of over-lap price observation, alt. valuation of quality change)</li> </ul>
--

Cataloging in publication – (CIP)  
The National and University Library of Kosova

63:311(496.51)“2005/2013”

Output Price Index and Prices in Agriculture : 2005-2013  
(2005=100) / [This publication was prepared by Bajrush Qevani,  
Violeta Arifi, Kademsha Bajramaga]. – Pristina : Kosovo Agenci of  
Statistics, 2014. – 40 str. : ilustr. ; 21 cm. - (Series 2 : Agriculture  
and Environment Statistics)

Preface / Isa Krasniqi : f. 2

1. Qevani, Bajrush 2. Arifi, Violeta 3. Bajramaga, Kademsha

**ISBN 978-9951-22-049-1**

# Kosovo Agency of Statistics

## *short description*

**Kosovo Agency of Statistics** is a professional institution which deals with collection, processing and publication of official statistical data. As such acts since 1948 and has passed through several historical stages, structured according to state regulation of those times.

On 2 August 1999, the Agency has resumed his professional work (after nine years of interruption of all statistical series detrimental to the interest of Kosovo), as an independent institution under the Ministry of Public Administration. Since 12.12.2011 the Agency operates in the frames of the Prime Minister's Office. Office is funded by the Kosovo Consolidated Budget, but also by donors for specific projects and for technical professional support.

**Kosovo Agency of Statistics** acts according to the Law No. 04/L-036 which entered into force on 12.12.2011. Strategic development plan 2009-2013 is the middle term implementation for the development of statistical system in correlation with the European Union statistics (EUROSTAT).

**Kosovo Agency of Statistics** has this organizational structure: production departments; (Department of Economic statistics and National Accounts, Department of Agriculture and Environment statistics and Department of Social statistics. **Support Departments**; Department of Methodology and Information Technology, Department of Policy Planning, Coordination and Communication, Department of Census and survey and Department of Administration. **Within the Agency we also established** Office of the Population Census, Households and Dwellings. **Regional Offices**; Gjakove, Gjilan, Mitrovica, Peja, Prizren, Pristina and Ferizaj

In ASK are employed in total 139 workers, of them 104 (74,8 %) at the headquarters of the Agency, while in the Regional Offices, 35 (25,2%), with qualifying structure, 70,5% with university education to 29,5% with secondary education.

We have professional and technical cooperation with all Ministries of the Government of Kosovo, especially with the Ministry of Economy and Finance, Central Bank of Kosovo, with international institutions, EUROSTAT, International Monetary Fund, World Bank, Sweden's SIDA, DFID, UNFPA, UNDP, UNVEF, and with the statistical institutions of the countries in the region.

**Kosovo Agency of Statistics** almost completely covers the territory of Kosovo, based on the statistical structure of the enumeration areas as the basic unit and sole in the country from which it gets first hand information. All surveys conducted in the field use the extension of the samples in these enumeration areas but also a statistical methodology according to international recommendations. During the collection of statistical data and reports from reporting entities are involved professionals, technicians, administrators, servants of the country offices, field enumerators from regional offices, etc.

We have successfully implemented the project of Population Census, Households and Dwellings in 2011, Census that was not carried out since 1981. Results obtained from the Census will have an important role in compiling the development policies.

**The mission of the Agency**; to meet the needs of users with qualitative statistical data, objective, in time and space so that users have reliable base to conduct regular analysis in the interest of planning and project development at the municipal and country level. To support government institutions, scientific institutes, research academies, businesses in order to provide proper information for decision-makers and other users in Kosovo. Ongoing is preparation for the Census of Agriculture in Kosovo.

- **Address:** KOSOVO AGENCY OF STATISTICS  
Street. "Zenele Salihu", No. 4, 10000 Pristina
- **Telephone:** +381 (0) 38 200 31 129  
CEO: +381 (0) 38 200 31 112
- **Fax::** +381 (0) 38 235 033
- **E-mail:** [agriculture@rks.gov.net](mailto:agriculture@rks.gov.net)

ISBN 978-9951-22-049-1

