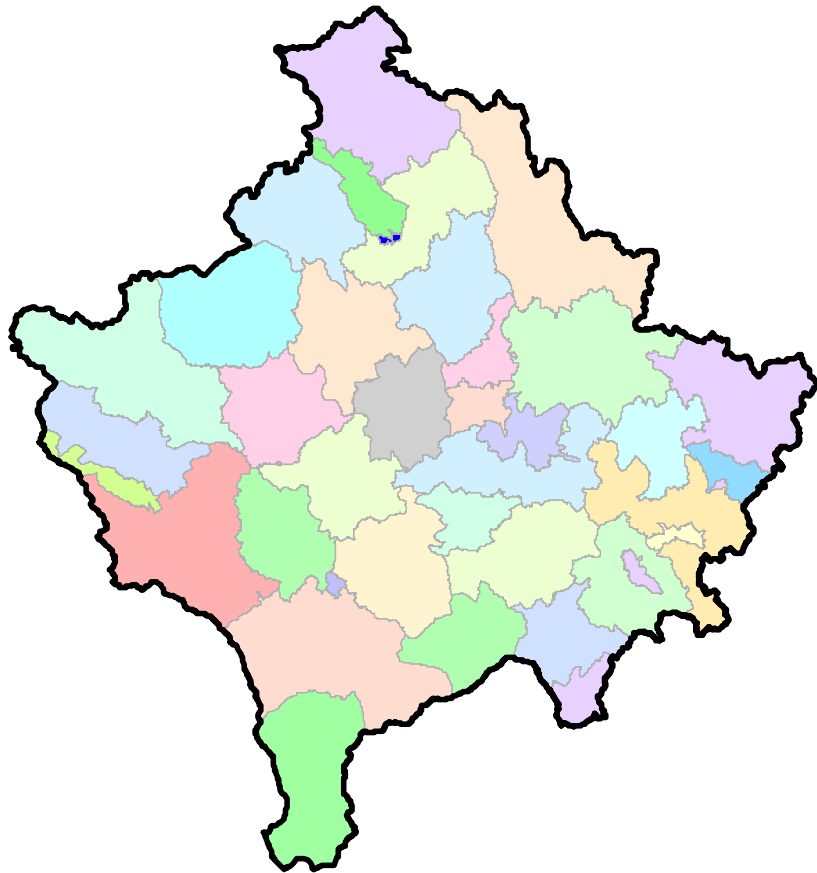




Republika e Kosovës
Republika Kosova-Republic of Kosovo
Qeveria - Vlada - Government
Zyra e Kryeministrit -Ured Premijera -Office of the Prime Minister
Agjencia e Statistikave të Kosovës - Agencija za Statistike Kosova - Kosovo Agency of Statistics

Series 5: Social Statistics

Social Welfare Statistics for (Q2 2013)



ask

AGJENCIA E STATISTIKAVE TË KOSOVËS
AGENCIJA ZA STATISTIKE KOSOVA
KOSOVO AGENCY OF STATISTICS

Foreword

Kosovo Agency of Statistics (KAS) has started to publish data on social welfare in Kosovo since 2002.

In this publication are summarized data for the second quarter of 2013.

The source of these data is the Ministry of Labour and Social Welfare (MLSW) respectively the following departments:

Department of Social Welfare - which provides data for beneficiaries (recipients) of social assistance, data for abandoned children, data on the homes of elderly persons without family care, data on persons with mental disabilities placed in the Institute of Shtime.

Department of Pension Administration - which provides data for basic pensions, paid pension contributions and pensions of persons with special needs,

Department of Families of Martyrs and War Invalids (DFMWI) - which provides data for the families of martyrs and war invalids.

This is the eleventh publication of the KAS, respectfully of the Department of Social Statistics for Welfare Statistics and will serve as a useful reference for all users of statistical data on social welfare.

These data will serve as important data to be familiar with the social environment in Kosovo.

All suggestions, proposals, comments or remarks can be send to electronic address social@rks-gov.net which will contribute to increase the quality of our publication in the future.

Publication was prepared by:

PhD. MAs. Bashkim Bellaqa - Director of the Department of Social Statistics

MA.Sc. Naime Pllana - Rexhepi - Chief of the Sector of Other Social Statistics

Officer for design: Ahmet Cakolli

October, 2013

Chief Executive Officer, KAS

Isa Krasniqi

List of abbreviations

KAS	-	Kosovo Agency of Statistics
MLSW	-	Ministry of Labour and Social Welfare
DFMWI	-	Department of Families of Martyrs and War Invalids
Q2	-	Second quarter
HEPFC	-	Homes of elderly persons without family care
PPSN	-	Pension for persons with special needs
SISH	-	Special Institute of Shtimje

C o n t e n t

	Page
Explanation to users	5
Table 1. Basic pensions by months and regions	9
Table 2. Basic pensions according to nationality, gender and total payments.....	10
Table 3. Basic pensions in Q2 2012/2013.....	11
Table 4. Pensions contributors by months and regions	12
Table 5. Pensions contributors according to nationality, gender and total payments	13
Table 6. Pensions contributors in Q2 2012/2013	14
Table 7. Pensions of persons with special needs (disabilities) by region	15
Table 8. Pensions of persons with special needs by gender and nationality	16
Table 9. Pensions of persons with special needs in Q2 2012/2013.....	18
Table 10. User of the pension scheme DFMWI by region.....	19
Table 11. Scheme DFMWI by age	20
Table 12. Scheme of DFMWI by nationality	21
From a total of 13,172 persons have benefited from the scheme DFMWI, 54 persons or 0.4% belong to non-Albanian ethnicity.....	21
Table 13. Scheme of DFMWI by gender and total payment	21
Table 14. Scheme of DFMWI in Q2 2012/2013	22
Table 15. House of elderly persons without family care according to nationality.....	23
Table 16. House of elderly persons without family care by gender.....	24
Table 17. House of elderly persons without family care in Q2 2012/2013	25
Table 18. Persons located in the Institute of Shtime and community homes according to nationality	26
Table 19. Persons located in Shtimje Institute and community homes by gender	27
Table 20. Persons located in Shtimje Institute and community homes in Q2 2012/2013	28
Table 21. Abandoned children by region.....	29
Table 22. Number of abandoned children in Q2 2012/2013	30
Table 23. Families that have benefited social assistance by region	31
Table 24. Members of households receiving social assistance by region	32
Table 25. Families and members of households receiving social assistance by region and total payments	33
Table 26. Families benefiting from social assistance scheme according to nationality	36
Table 27. Number of families benefiting from social assistance scheme in 2012/2013.....	Q2 37

Explanation to users

Basic pensions and pension contributors¹

Basic pension - means retirement pension paid by the Pension Administration to all permanent residents of Kosovo who have reached retirement age. The amount of the pension since January 2013 is 60 €

Pension based on individual savings - means a pension that the Kosovo Pension Fund Savings pays to persons of retirement age who meet the legislation approved by the Assembly Law no.04/L-101 on pension contributions. The amount of the pension since January 2013 is 112 €

Pensions for persons with special needs²

Disability pension - means any social security payment made to persons who are deemed with special needs under legislation approved by the Assembly and which governs such a scheme of payments. The amount of the pension since January 2013 is 60 €.

War invalids³

War invalids are divided into several categories depending on the category the rate of payment changes as follows:

Families of martyrs

	358,50€
The family who gave a martyr:	
The family with two martyrs:	428,70€
The family with three martyrs:	463,80€
The family with four martyrs:	498,90€
The family with more than four martyrs:	534,00€

War invalids:

Invalids with body disabilities over 80 %	358,50€
Invalids with body disabilities with 71 – 80 %	330,00€
Invalids with body disabilities with 61-- 70 %	315,00€
Invalids with body disabilities with 51 – 60 %	300,00€
Invalids with body disabilities with 41 – 50 %	285,00€
Invalids with body disabilities with 31 – 40 %	255,00€
Invalids with body disabilities with 20 – 30 %	180,00€

Invalids with custodians

Custodian for invalid with body injury with over 80%	180,00€
--	---------

¹ Definition of basic pensions and contributors found in Law No. 04 / L-101

² Definition for pensions of persons with special needs (disabilities) found in Law No.2003 / 23

³ Definition for war invalids and families of martyrs found in Law 04 / L-054

Families of the missing in KLA

Family of missing one in KLA	358,00€
Family of missing two in KLA	428,70€
Family of missing three in KLA	463,80€
Family of missing four in KLA	498,90€
Family with more than four missing in KLA	534,00€

Families of war Invalids after the death

Invalid with physical impairment over 80 %	286,80€
Invalid with physical impairment of 71 – 80%	264,00€
Invalid with physical impairment of 61 – 70 %	252,00€
Invalid with physical impairment of 51 – 60 %	240,00€
Invalid with physical impairment of 41 - 50 %	228,00€
Invalid with physical impairment of 31 – 40 %	204,00€
Invalid with physical impairment of 20 – 30 %	144,00€

Families of civilian victims

Family of civilian victim	135,00€
Family of missing civilian	135,00€

Civilian War Invalid

Invalids with physical impairment with over 80 %	122,00€
Invalids with physical impairment of 61 - 80%	109,00€
Invalids with physical impairment of 40 – 60 %	96,00€

Civilian War Invalid with custodian

Custodian for civilian war invalid with physical impairment over 80%	40,10€
--	--------

Families of civilian war invalids after death

Invalids with physical impairment over 80%	98,60€
Invalids with physical impairment of 61 – 80%	88,20€
Invalids with physical impairment 40 – 60 %	77,80€

Civilian war invalids with custodian - Custodian for the invalid with physical impairment by over 80%.

Along with war invalids are included families of war invalids after death (which include spouse and children up to age 18 years, respectively 26 years if you are in school), civil invalids, families of civil invalid after death, families of the martyrs, families of the missing in KLA, families of civilian victims, families of the missing civilians, war invalids guardians and custodians of civil invalids.

Average payment of war invalids is € 192 (average taken in June 2013).

Abandoned children⁴

Abandoned children without parental care is considered any child aged under 18 who is abandoned by parents who for various reasons do not or are not able to perform the duties, responsibilities and parental rights.

Forms of protection for this category of children are: custody, family reunification, family housing, temporary institutional housing and adoption.

Homes of elderly persons without family care - which is located in Prishtina, Skenderaj and Gurakoc wherein the elderly who have no family care.

Special Institute in Shtimje and community houses - In Shtime institution and in 7 community homes which are located in Shtime, Graçanica, Ferizaj, Vushtrri, Dardanë and Deçan as well as a home for children with disabilities in mental development placed in Shtimje are placed persons with disabilities in mental development.

Social assistance scheme⁵

Social assistance scheme provides temporary financial assistance to families who are poor and are selected in accordance with the criteria set forth in the law and within the resources allocated for this purpose by the Kosovo Budget.

Eligible family - is composed of those persons whose needs are considered in determining eligibility and the amount of assistance, and defined as consisting of the applicant or recipient and all other family members, who are in the household (his/her spouse or partners who live together, parents and children, including adopted children, children in foster care or children of the spouse. Therefore, the family may be made by the applicant or recipient and one, two, three or more members living in the household. An individual with no other family members in the household, according to this law, is considered a family.

Household - defined as a group of individuals living together under one roof and sharing living expenses. Under this law household may include persons who are not family members.

Orphan - defined as a child both of whose parents have died or who was born to a single parent (self-feeder) who died.

Single parent - defined as the parent or legal guardian of a child up to the age of eighteen (18), who lives with the child and is solely legally and financially responsible to a child.

Dependent person – is defined as an individual who belongs to one of the following groups: persons over the age of eighteen (18) and who have serious flaws and permanently disabled that make him/her unable to work in rewarding job, persons who are sixty-five (65) years of age or older, permanent caregivers of persons with disabilities or to persons age 65 or older who need permanent care or child under age of 5, persons aged 14 years, persons between the ages of 15 and 18 and who are in regular secondary education, self-nourishing parents with at least one child under the age of 15 years.

For social assistance, all family members must be permanent residents in Kosovo and will meet the requirements for classification in one of the following categories:

First category of social assistance scheme

Enter families in which all family members are dependents (as defined above the person dependent) and none of them is employed.

⁴ Definition of abandoned children was taken from the family law and family relations No. 10/84

⁵ Definition of social assistance scheme is taken from Law No. 04/L-096

The second category

Family with a family member able to work and with at least one child under age of five (5) or who have continuously addressed in care of an orphan under the age of fifteen (15),

All family members for inclusion in the second category must either be dependents (as defined in the dependent person) or be registered as unemployed at the Employment Offices of the Ministry of Labour and Social Welfare.

Monthly standard rate for social assistance is determined by the number of family members and the number of points per member. The height of the point in the euro determines the Ministry of Economy and Finance in cooperation with the Ministry of Labour and Social Welfare. The monthly social assistance is harmonized with the index of consumer prices of food basket published by KAS.

Family with one (1) member:	40 €
Family with two (2) members	55 €
Family with three (3) members	60 €
Family with four (4) members	65 €
Family with five (5) members	70 €
Family with six (6) members	75 €
Family with seven (7) members	80 €

Table 1. Basic pensions by months and regions

Months	Region							
	Gjakovë	Gjilan	Mitrovicë	Pejë	Prizren	Prishtinë	Ferizaj	Gjithsej
January	11.854	16.192	18.347	11.898	19.127	24.535	11.109	113.062
February	11.843	16.114	18.744	12.012	19.165	25.059	11.205	114.142
March	11.700	16.090	18.591	11.881	19.218	24.985	11.053	113.518
April	11.684	16.114	18.739	11.815	19.259	24.721	11.173	113.505
May	11.657	16.306	18.867	11.991	19.112	24.728	11.314	113.975
June	11.648	16.353	18.488	11.930	18.969	24.587	11.206	113.181

Number of persons who have benefited from basic pension in June was 113,181

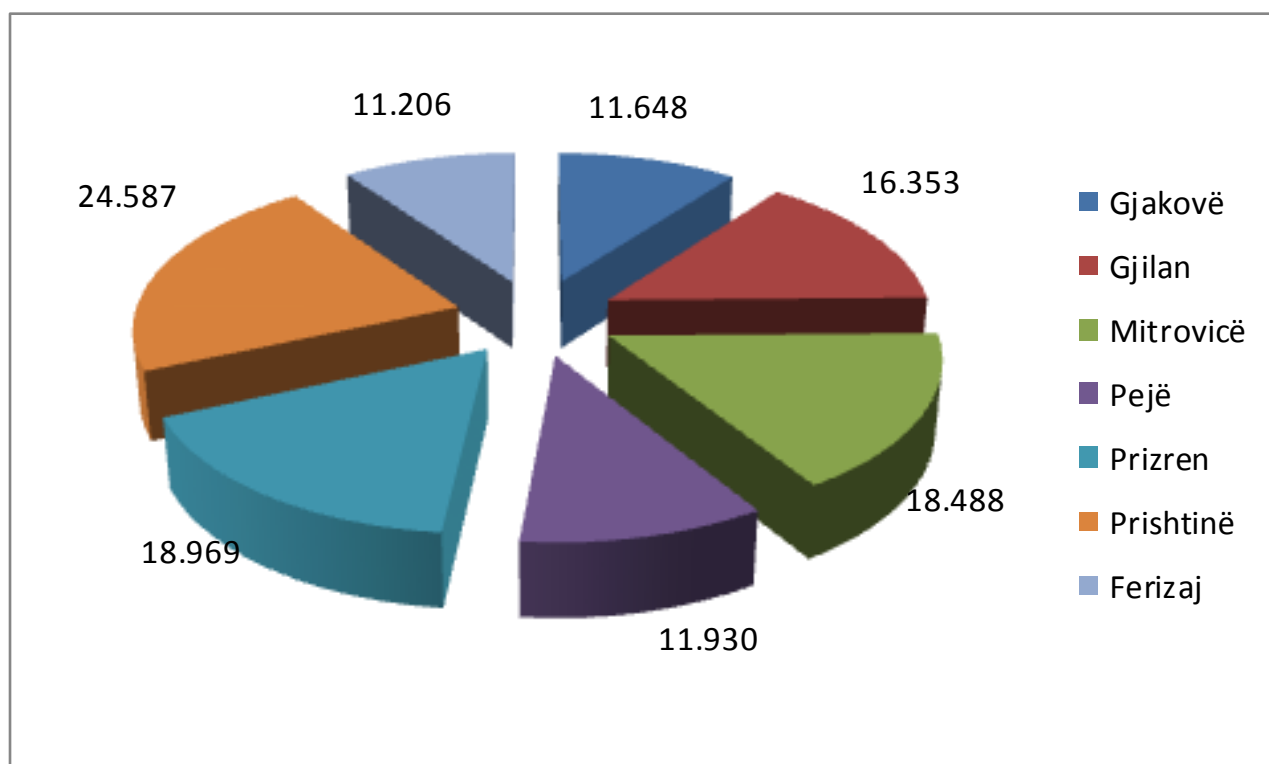
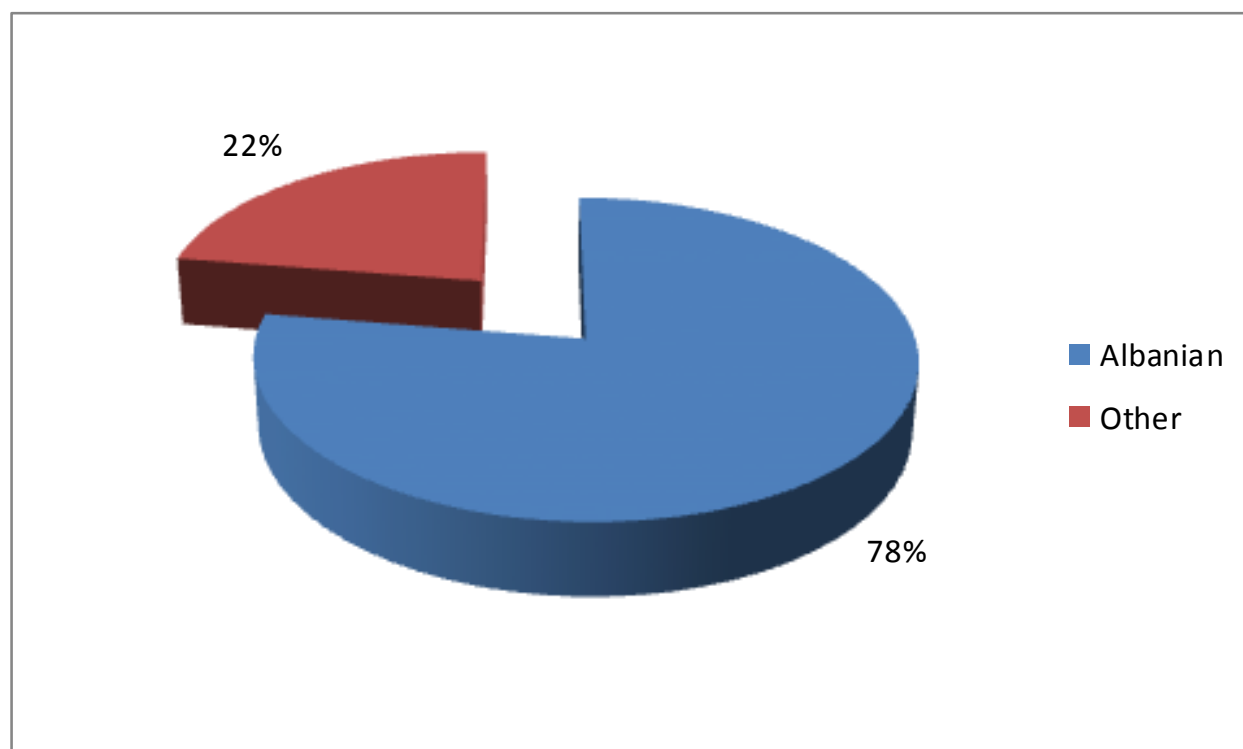
Graph. 1 Basic pensions in percentage

Table 2. Basic pensions according to nationality, gender and total payments

Months	Albanian	Other ⁶	Female	Male	Payment in €
January	87.811	25.251	74.109	38.953	7.039.845,00
February	88.641	25.501	74.945	39.197	7.158.245,00
March	87.996	25.522	74.456	39.062	7.056.760,00
April	87.661	25.844	74.353	39.152	7.164.795,00
May	88.132	25.843	74.590	39.385	7.214.970,00
June	87.751	25.430	74.060	39.121	7.145.800,00

77.5% of basic pension beneficiaries belonging to ethnic Albanians and Serbs 22.5%.

Graph.2 Basic pensions by gender and nationality

⁶ In others are included number of Serbs and other non-Albanian nationalities living in Kosovo and to benefit from basic pension

Table 3. Basic pensions in Q2 2012/2013

Months	Years	
	2012	2013
January	107.701	113.062
February	105.879	114.142
March	105.854	113.518
April	105.656	113.505
May	107.328	113.975
June	108.187	113.181

Compared with the second quarter of 2012, the number of people who benefit from basic pension in the second quarter 2013 increased 4.4% to 4,994 respectively.

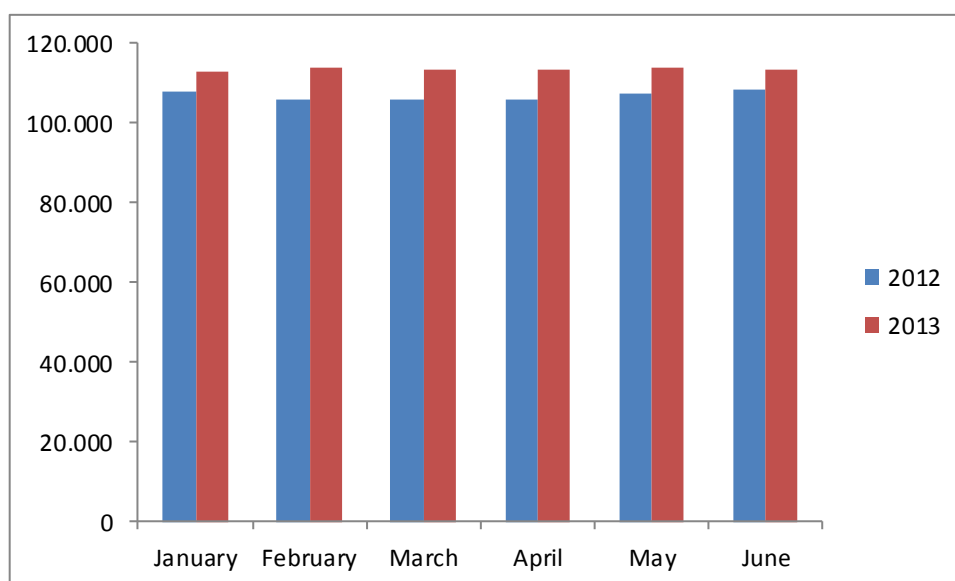
Graph 3. Basic pension Q2 2012 / 2013

Table 4. Pensions contributors by months and regions

Months	Region							
	Gjakovë	Gjilan	Mitrovicë	Pejë	Prizren	Prishtinë	Ferizaj	Total
January	3.988	2.539	5.637	3.674	5.430	10.659	2.775	34.702
February	4.024	2.554	5.646	3.718	5.491	10.820	2.787	35.040
March	4.003	2.545	5.623	3.694	5.507	10.797	2.785	34.954
April	4.023	2.581	5.652	3.727	5.529	10.815	2.867	35.194
May	4.005	2.606	5.705	3.726	5.485	10.768	2.855	35.150
June	3.949	2.578	5.682	3.726	5.450	10.630	2.851	34.866

Number of persons who have benefited from the pension contributors in June was 34,866.

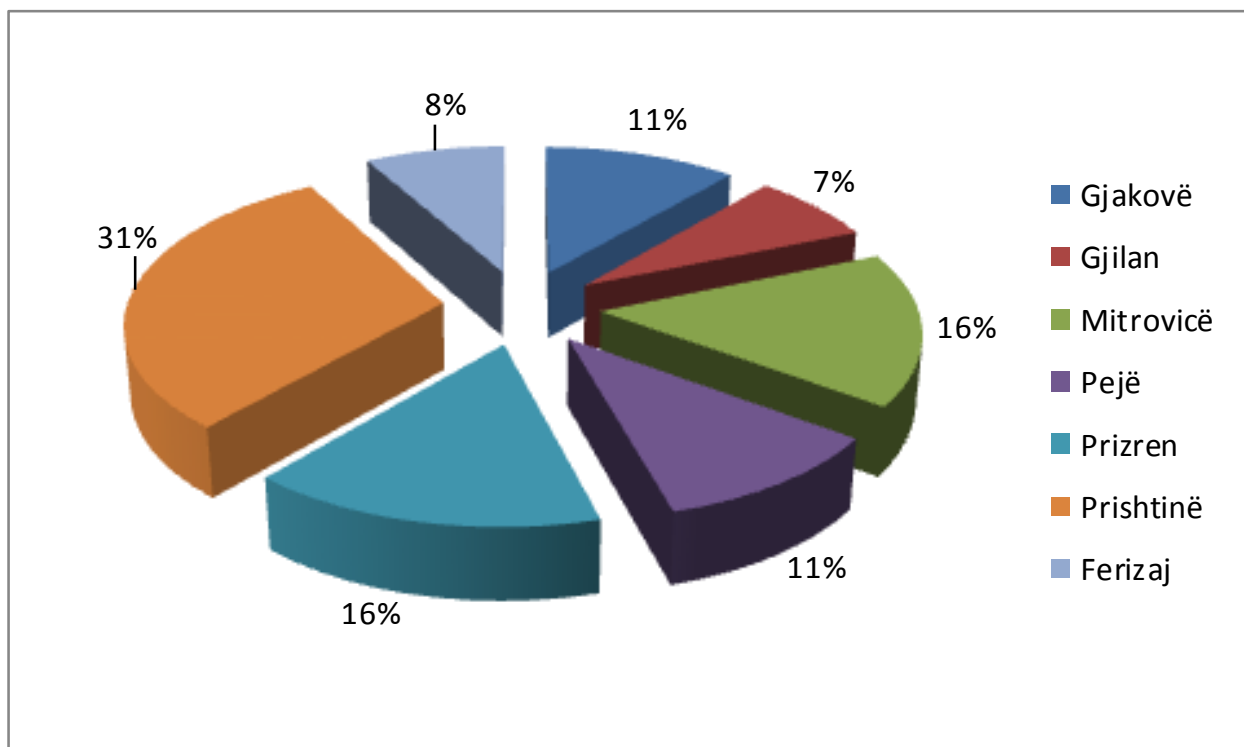
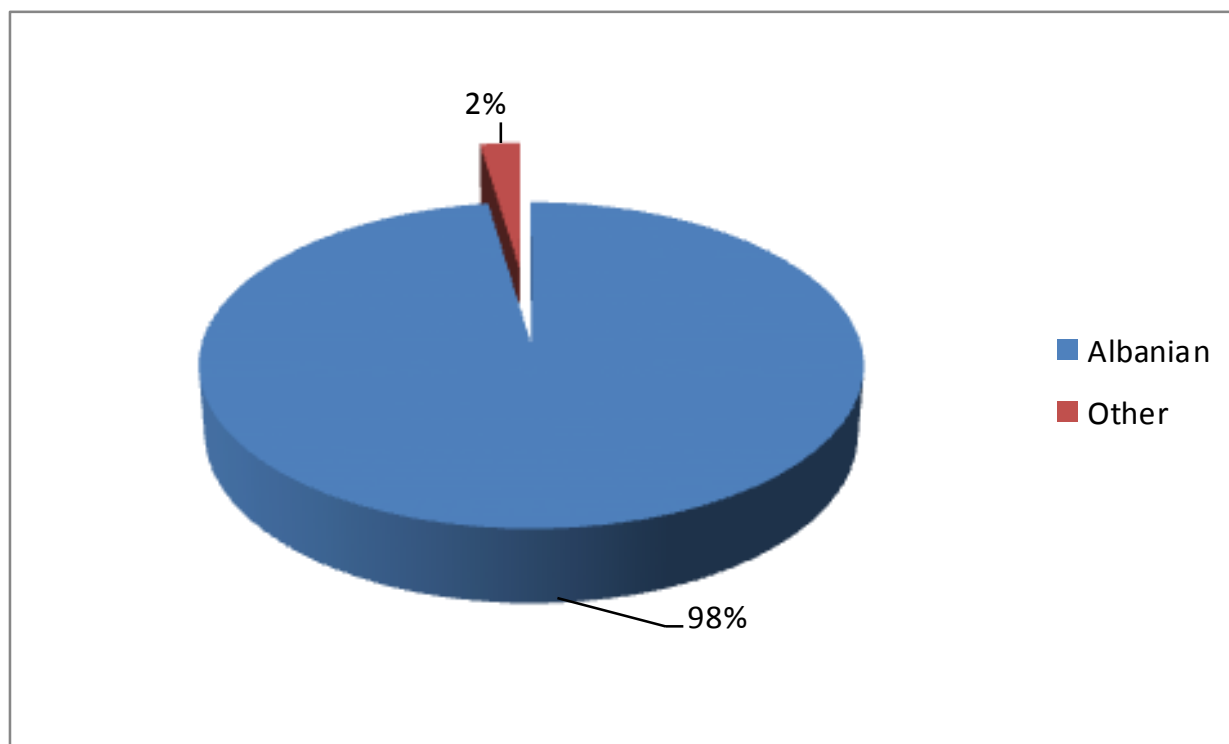
Graph 4. Pensions paid contributions in percentage

Table 5. Pensions contributors according to nationality, gender and total payments

Months	Albanian	Other ⁷	Female	Male	Payment in €
January	33.862	840	3.611	31.091	3.985.409,00
February	34.206	834	3.655	31.385	4.054.359,00
March	34.124	830	3.662	31.292	4.016.507,00
April	34.358	836	3.709	31.486	4.080.377,00
May	34.330	820	3.732	31.418	4.066.800,00
June	34.054	812	3.711	31.155	4.034.305,00

Of the total 34,866, 97.6% of them belong to ethnic Albanians and 2.4% other ethnic nationalities.

Graph 5. Pensions contributors according to nationality in percentage

⁷ In others are included number of Serbs and other non-Albanian nationalities living in Kosovo and to benefit from pension contributors

Graph 6. Pensions contributors by gender expressed as a percentage

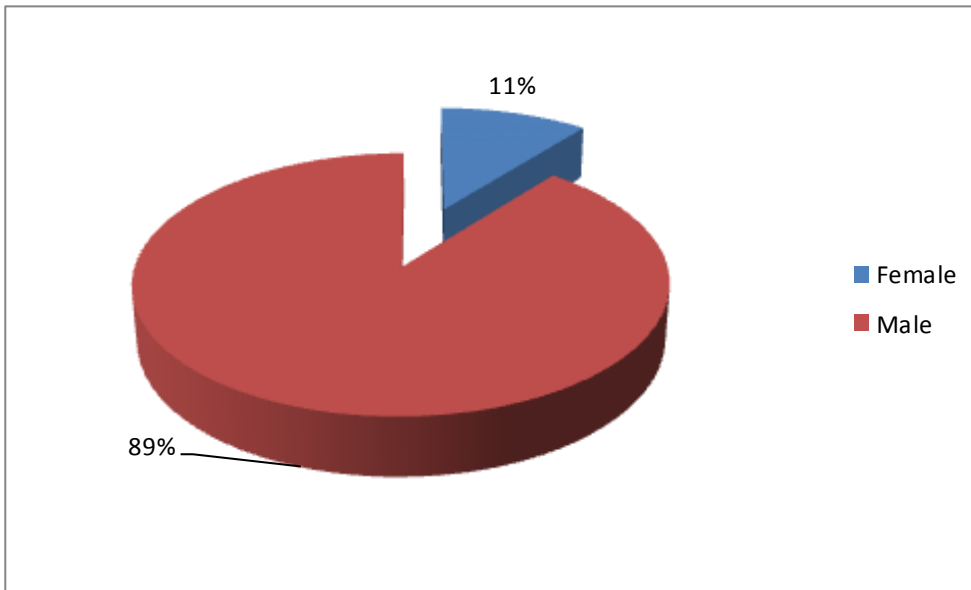
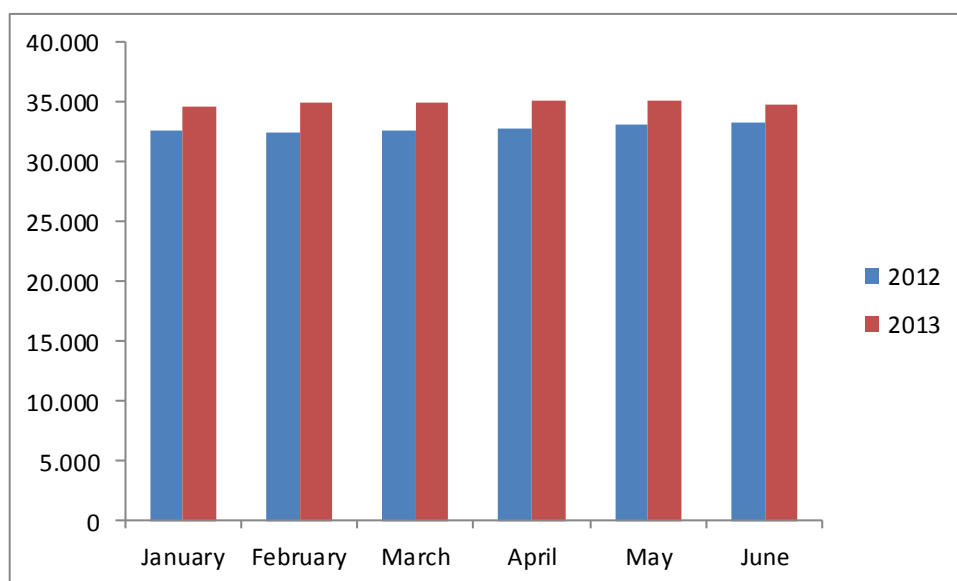


Table 6. Pensions contributors in Q2 2012/2013

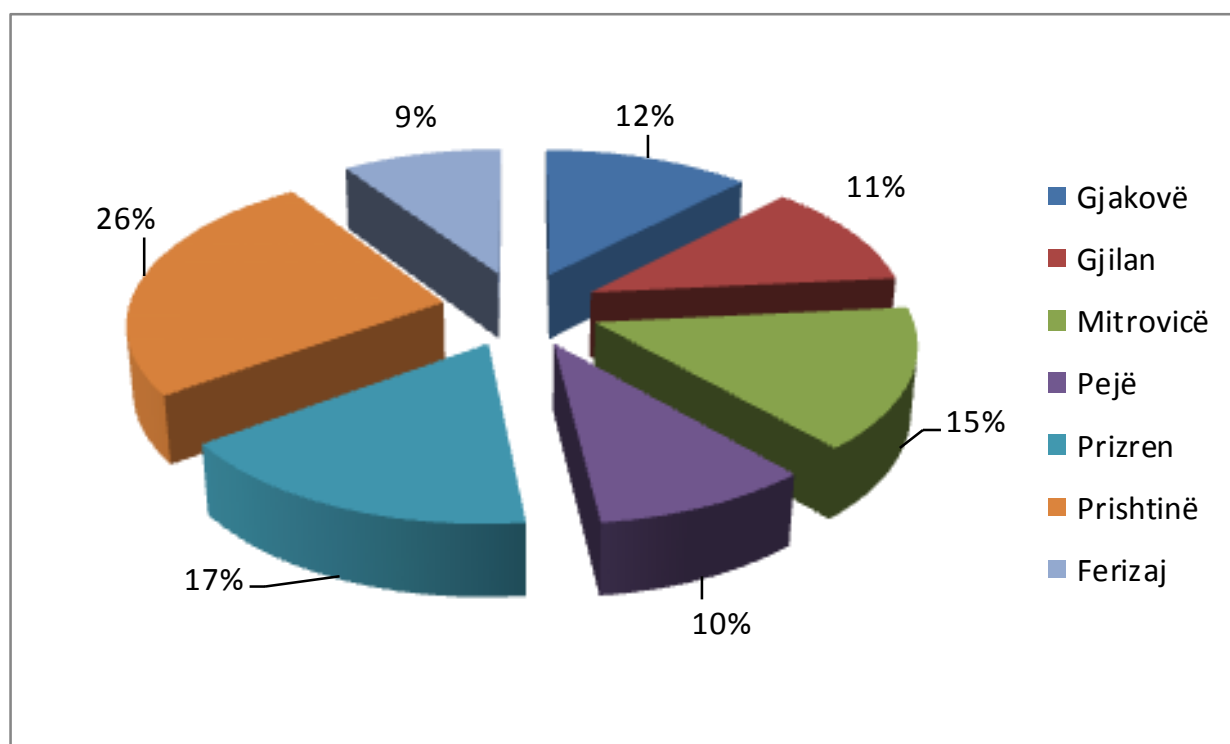
Months	Years	
	2012	2013
January	32.624	34.702
February	32.380	35.040
March	32.594	34.954
April	32.737	35.194
May	33.200	35.150
June	33.369	34.866

Compared with the second quarter of 2012 the number of people who benefit from the pension contributors in the second quarter 2013 increased by 1,497 or 4.3%.

Graph 7. The number of pension contributors in Q2 2012/2013**Table 7. Pensions of persons with special needs (disabilities) by region**

Months	Region							Total
	Gjakovë	Gjilan	Mitrovicë	Pejë	Prizren	Prishtinë	Ferizaj	
January	2.181	2.117	2.755	1.777	3.060	4.808	1.678	18.376
February	2.088	1.993	2.609	1.669	2.980	4.589	1.563	17.491
March	2.086	2.036	2.608	1.661	2.963	4.565	1.538	17.457
April	2.134	2.046	2.722	1.696	2.972	4.609	1.611	17.790
May	2.175	2.032	2.744	1.700	3.019	4.624	1.678	17.972
June	2.229	2.057	2.767	1.766	3.068	4.696	1.722	18.305

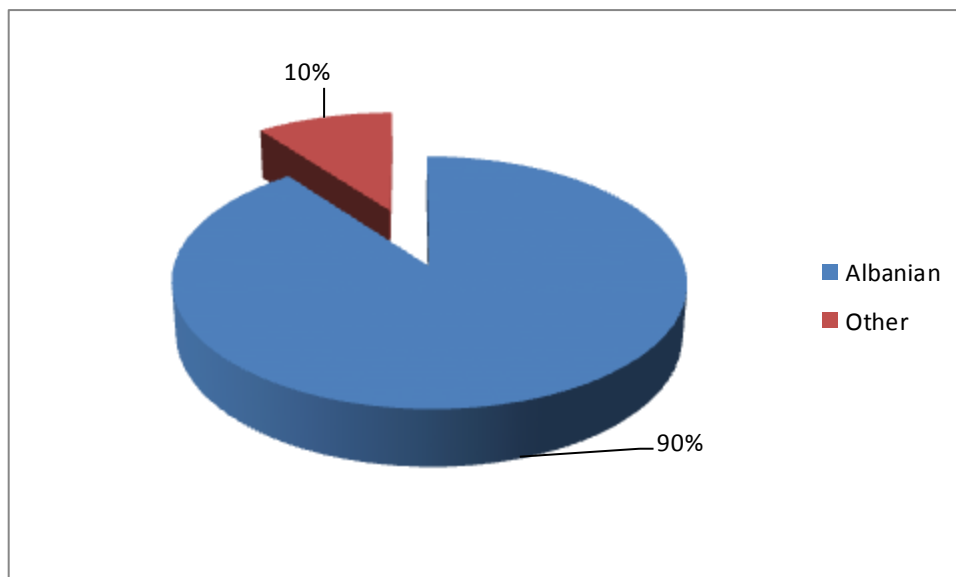
Number of people who benefit from PPD in June was 18,305.

Graph 8. Pensions of persons with special needs by region**Table 8. Pensions of persons with special needs by gender and nationality**

Months	Albanian	Other ⁸	Female	Male	Payment in €
January	17.750	626	8.723	9.653	1.170.345,00
February	16.910	581	8.314	9.177	1.143.610,00
March	16.902	555	8.280	9.177	1.136.650,00
April	17.205	585	8.451	9.339	1.219.685,00
May	16.111	1.861	8.559	9.413	1.205.650,00
June	16.433	1.872	8.698	9.607	1.170.545,00

From a total of 18,305 persons that benefited from the PDP, 89.7% are ethnic Albanians and 10.3% other ethnic nationalities.

Graph 9. Pensions of persons with special needs by nationality



⁸ In others are included number of Serbs and other non-Albanian nationalities living in Kosovo and pension benefit of persons with special needs

Table 9. Pensions of persons with special needs in Q2 2012/2013

Months	Years	
	2012	2013
January	17.384	18.376
February	17.262	17.491
March	17.269	17.457
April	17.288	17.790
May	17.477	17.972
June	17.414	18.305

Compared with the second quarter 2012, the number of people who benefit from this pension in the second quarter 2013 increased to 891 or 4.8%

Graph 10. Number of pensions of persons with special needs in Q2 2012/2013

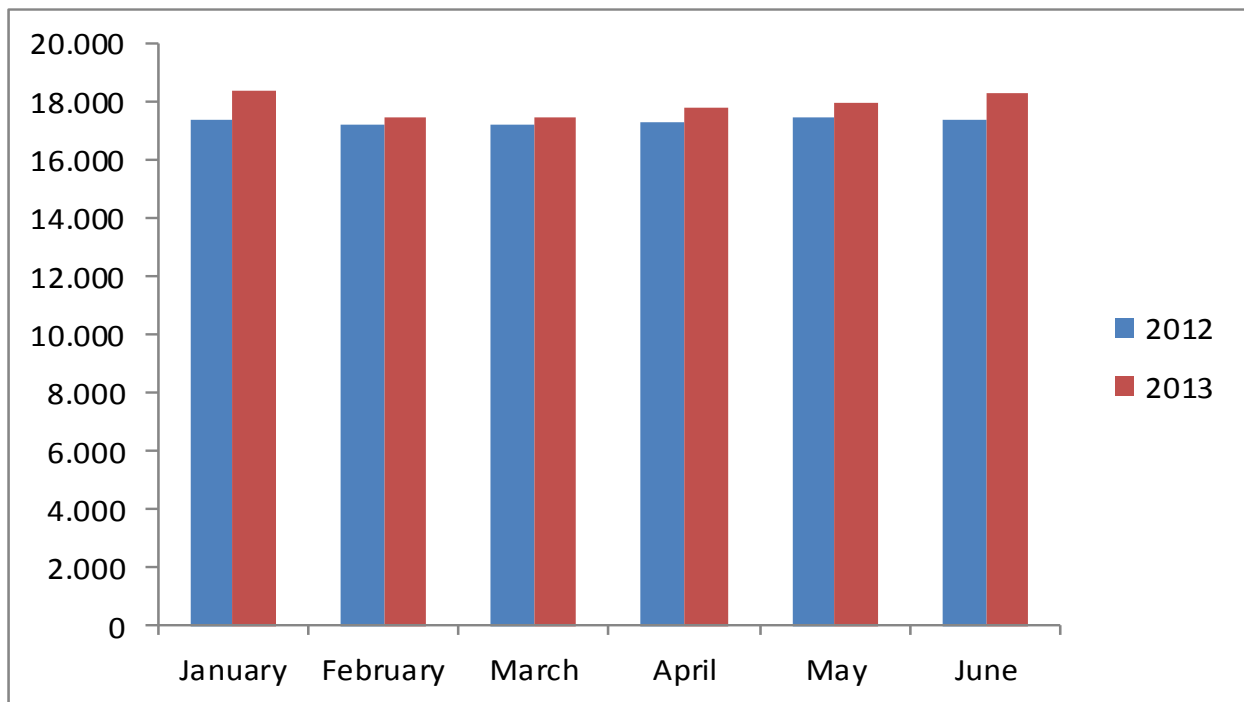


Table 10. User of the pension scheme DFMWI by region

Months	Region							Total
	Gjakovë	Gjilan	Mitrovicë	Pejë	Prizren	Prishtinë	Ferizaj	
January	2.475	283	2.636	1.530	1.735	3.805	785	13.249
February	2.321	267	2.521	1.463	1.566	3.596	742	12.476
March	2.421	280	2.595	1.511	1.669	3.759	785	13.020
April	2.443	281	2.610	1.517	1.706	3.787	789	13.133
May	2.447	284	2.617	1.516	1.722	3.791	790	13.167
June	2.448	284	2.614	1.517	1.722	3.796	791	13.172

Number of persons who have benefited from the scheme DFMWI in June is 13,172

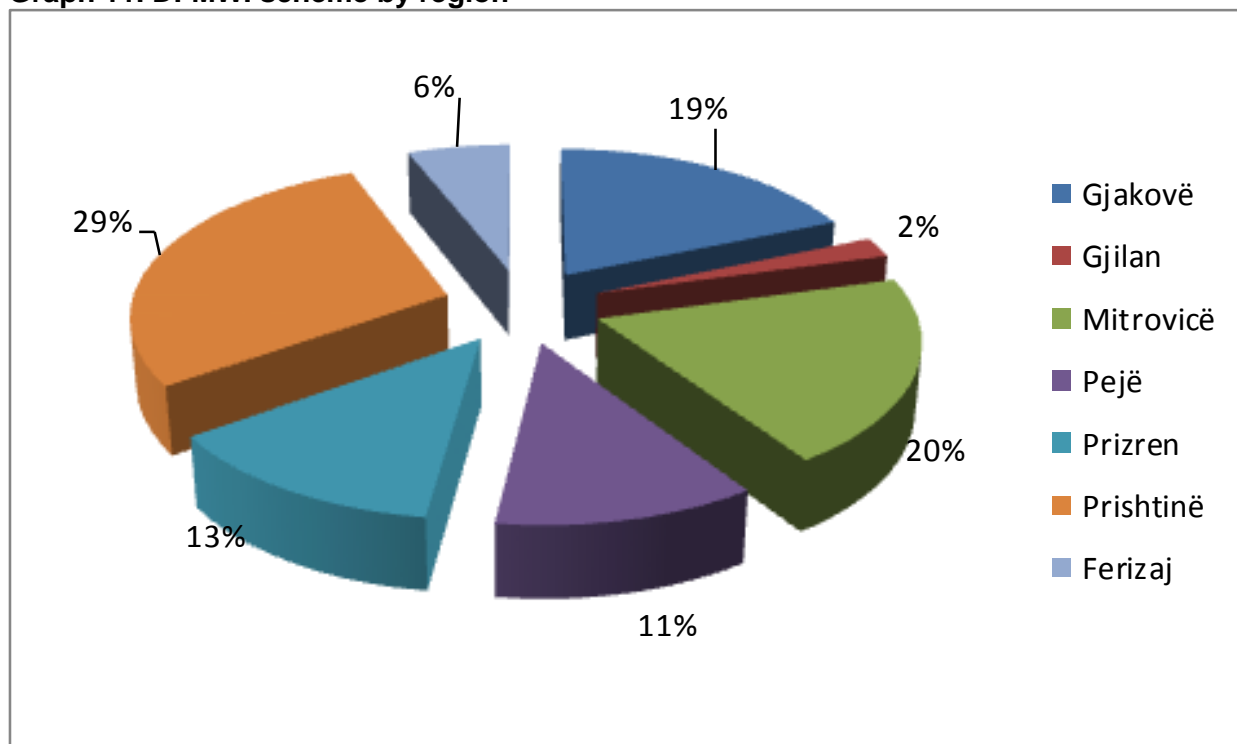
Graph 11. DFMWI scheme by region

Table 11. Scheme DFMWI by age

Months	Age							Total
	< 18	18 -25	26 - 35	36 - 45	46 - 55	56 - 65	65>	
January	41	251	1.146	3.109	3.161	2.675	2.866	13.249
February	38	238	1.070	2.958	2.986	2.535	2.651	12.476
March	41	257	1.123	3.073	3.115	2.639	2.772	13.020
April	41	259	1.134	3.092	3.142	2.664	2.800	13.132
May	41	267	1.139	3.098	3.153	2.671	2.797	13.166
June	41	269	1.139	3.098	3.153	2.673	2.799	13.172

It is noteworthy that the people who have benefited from the pension, of them:

War invalids	3.483
Families of the missing civilians	302
Custodian of civil war invalids	34
Civilian war invalids	2.135
Family of civilian victims	4.934
Families of martyrs of KLA	2.022
Custodian for war invalids	77
Families of the missing KLA	19
Families of war invalids after death	97
Families of civil invalid after death	69

Table 12. Scheme of DFMWI by nationality

Months	Albanian		Other ⁹		Total
	F	M	F	M	
January	6.837	6.366	35	11	13.249
February	6.421	6.012	33	10	12.476
March	6.694	6.273	40	13	13.020
April	6.757	6.323	40	13	13.133
May	6.776	6.337	41	13	13.167
June	6.782	6.336	41	13	13.172

From a total of 13,172 persons have benefited from the scheme DFMWI, 54 persons or 0.4% belong to non-Albanian ethnicity.

Table 13. Scheme of DFMWI by gender and total payment

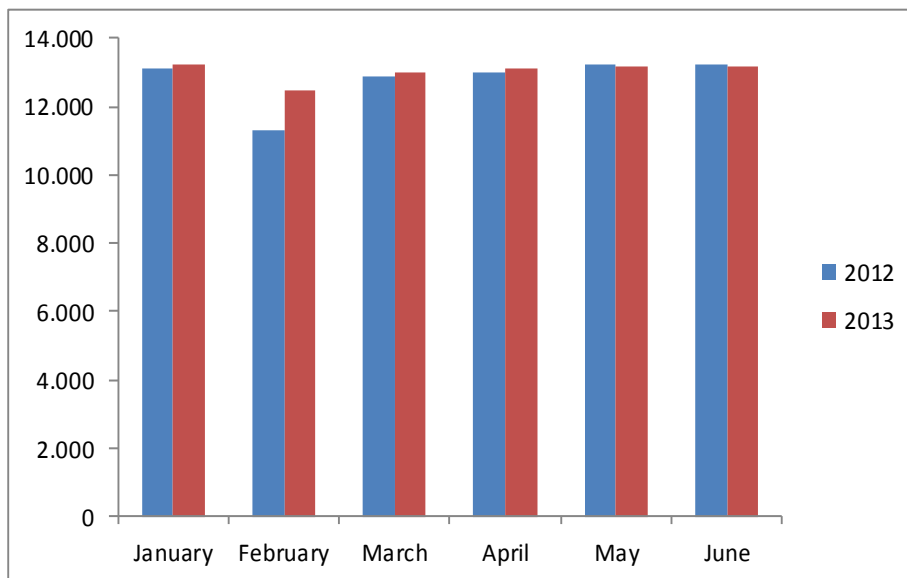
Months	F	M	Total	Total payment in €
January	6.872	6.377	13.249	2.560.591,00
February	6.454	6.022	12.476	2.413.510,00
March	6.734	6.286	13.020	2.597.478,00
April	6.797	6.336	13.133	2.559.367,00
May	6.817	6.350	13.167	2.544.877,00
June	6.823	6.349	13.172	2.529.607,00

⁹ In others are included number of Serbs and other non-Albanian nationalities living in Kosovo and to benefit from the scheme DFMWI

Table 14. Scheme of DFMWI in Q2 2012/2013

Months	Years	
	2012	2013
January	13.138	13.249
February	11.309	12.476
March	12.873	13.020
April	13.001	13.132
May	13.201	13.166
June	13.223	13.171

Compared with the second quarter 2012, the number of people who benefit from the scheme DFMWI in the second quarter 2013 decreased to 52 persons or 0.4%.

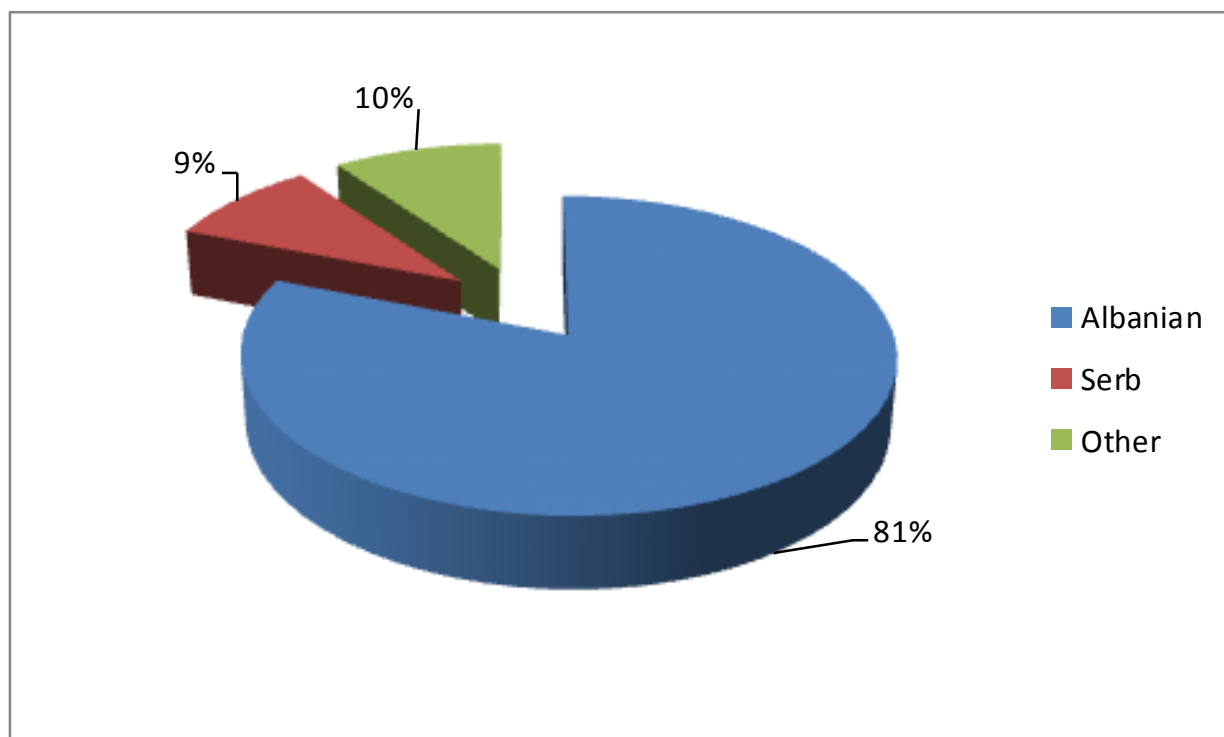
Graph 12. DFMWI scheme in Q2 2012/2013

¹⁰ It should be noted that the number people who benefit from this pension moves because it is provided that every six months for the beneficiary to appear in the relevant department in order to continue payments, otherwise they are removed from the list and activated again when they announced, that this is why move the number of people who benefit as war invalids and martyrs family

Table 15. House of elderly persons without family care according to nationality

Months	Albanian	Serb	Other ¹¹	Total
January	107	11	12	130
February	106	12	12	130
March	106	12	13	131
April	104	12	13	129
May	104	12	13	129
June	102	12	13	127

Of the total number of elderly persons without family care, 94 are located in HEPFC in Prishtina, 14 HEPFC Skanderaj and 19 in HEPFC in Gurakoc.

Graph 13. National structure in percentage

¹¹In others are included the number of persons accommodated in the homes of elderly people without family and belonging to these ethnic nationalities: Turkish, Bosnian, Egyptians, Ashkali, Roma, Croats, etc.

Table 16. House of elderly persons without family care by gender

Months	Female	Male	Total
January	55	75	130
February	55	75	130
March	56	75	131
April	55	74	129
May	56	73	129
June	56	71	127

Graph 14. Gender structure in percentage

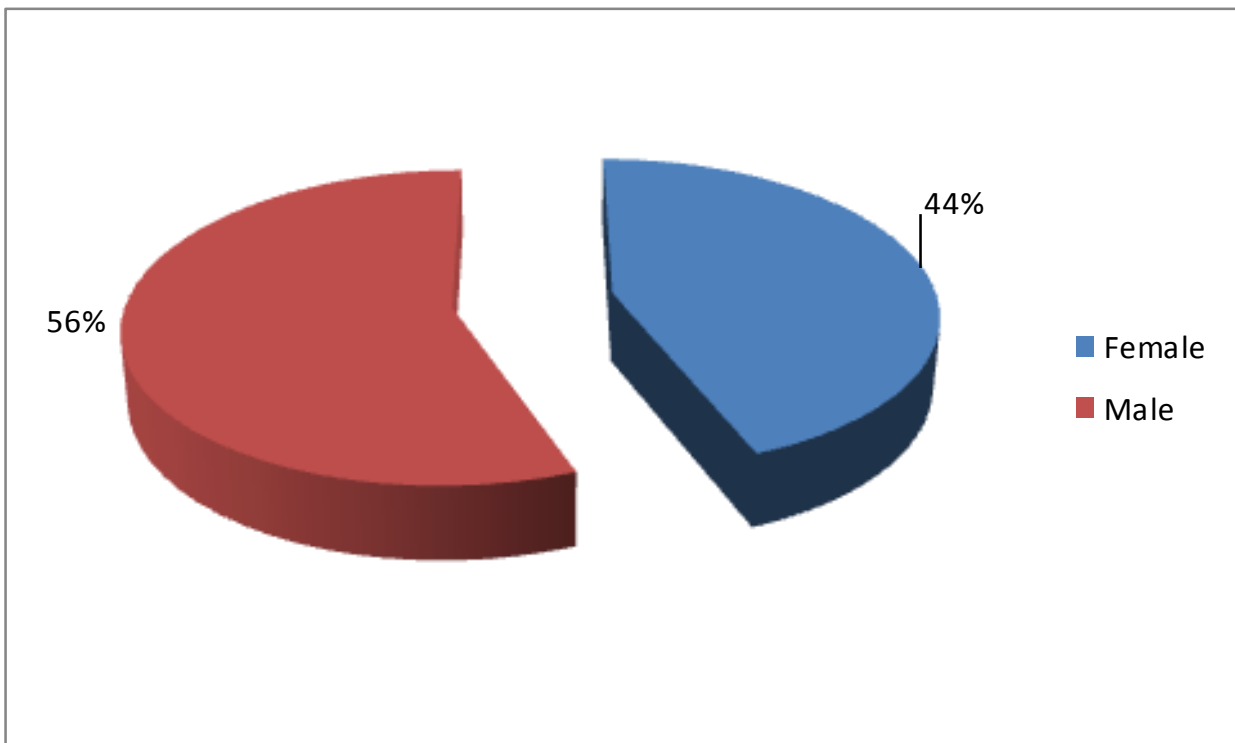


Table 17. House of elderly persons without family care in Q2 2012/2013

Months	Years	
	2012	2013
January	130	130
February	131	130
March	131	131
April	127	129
May	125	129
June	129	127

Graph 15. Number of persons located in the home of elderly persons without family care in Q2 2012/2013

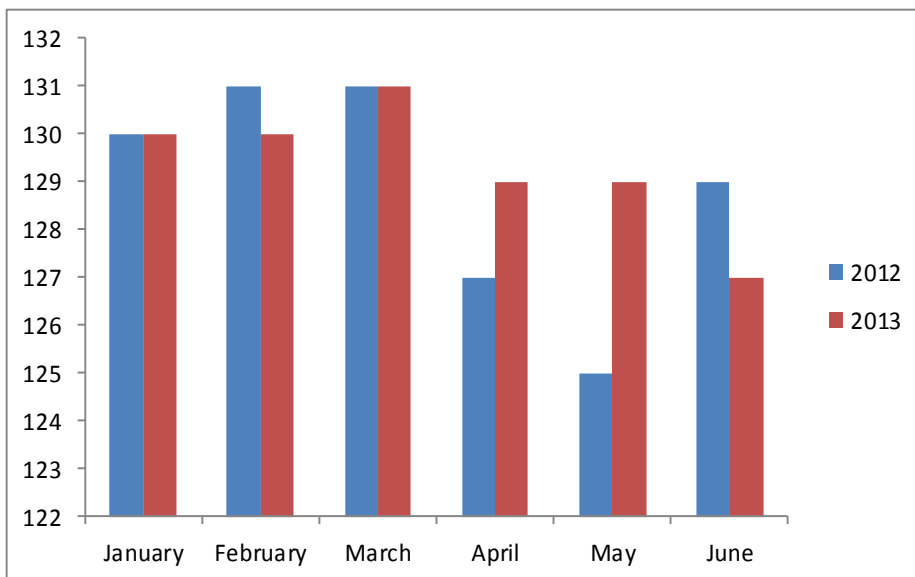
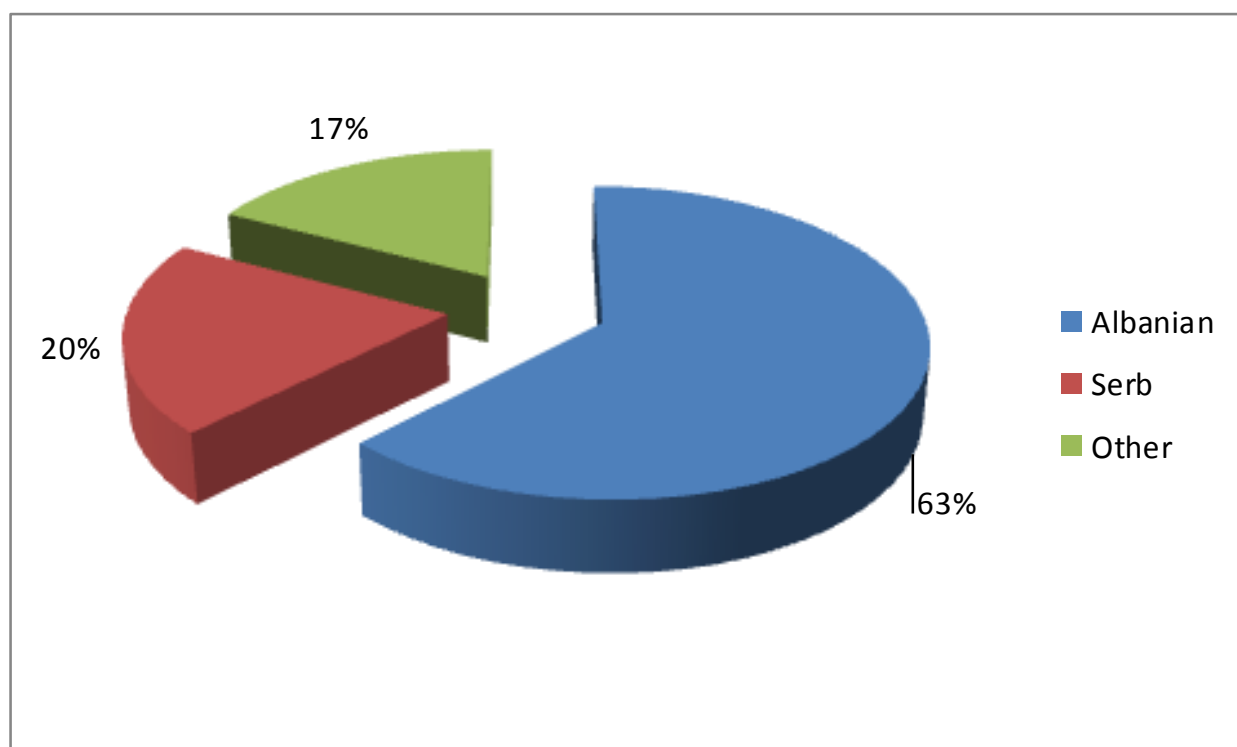


Table 18. Persons located in the Institute of Shtime and community homes according to nationality

Months	Albanian	Serb	Other ¹²	Total
January	78	28	25	131
February	79	28	24	131
March	80	29	22	131
April	83	27	23	133
May	84	27	23	134
June	84	27	24	135

Of the total number of persons with mental special needs, 62 are located in the Institute of Shtime and 73 are placed in community homes in Graçanica, Ferizaj, Vushtrri, Dardane, Deçan and the children's home in Shtime.

Graph 16. National structure in percentage

¹² In others are included the number of persons with mental disabilities placed in the Institute of Shtime and 7 community houses belonging to these ethnic nationalities: Turkish, Bosnian, Egyptians, Ashkali, Roma, Croats, et

Table 19. Persons located in Shtimje Institute and community homes by gender

Months	Female	Male	Total
January	59	72	131
February	59	72	131
March	57	74	131
April	59	74	133
May	59	75	134
June	59	75	134

Graph 17. Gender structure in percentage

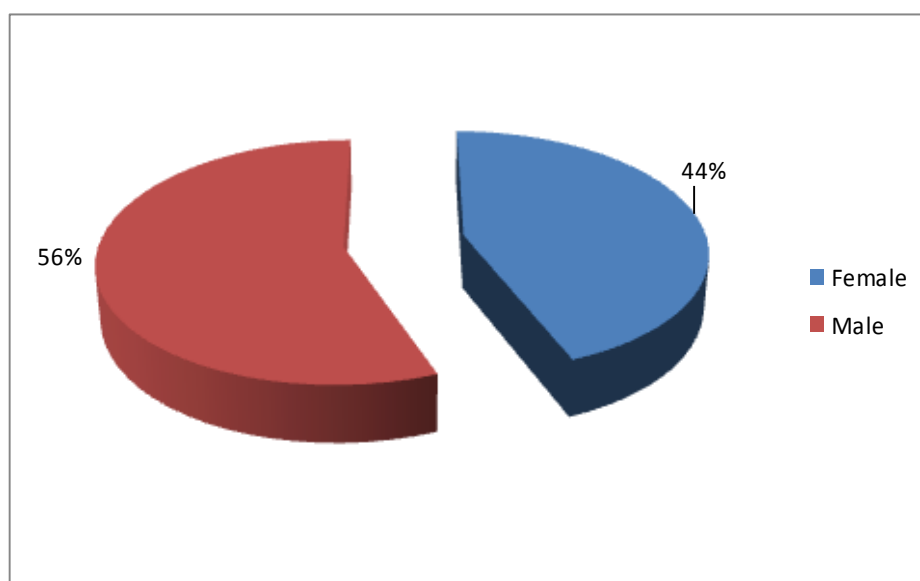


Table 20. Persons located in Shtimje Institute and community homes in Q2 2012/2013

Months	Years	
	2012	2013
January	128	131
February	130	131
March	130	131
April	128	134
May	130	135
June	130	135

Graph 18. Number of persons in the ISH and community homes in Q2 2012/2013

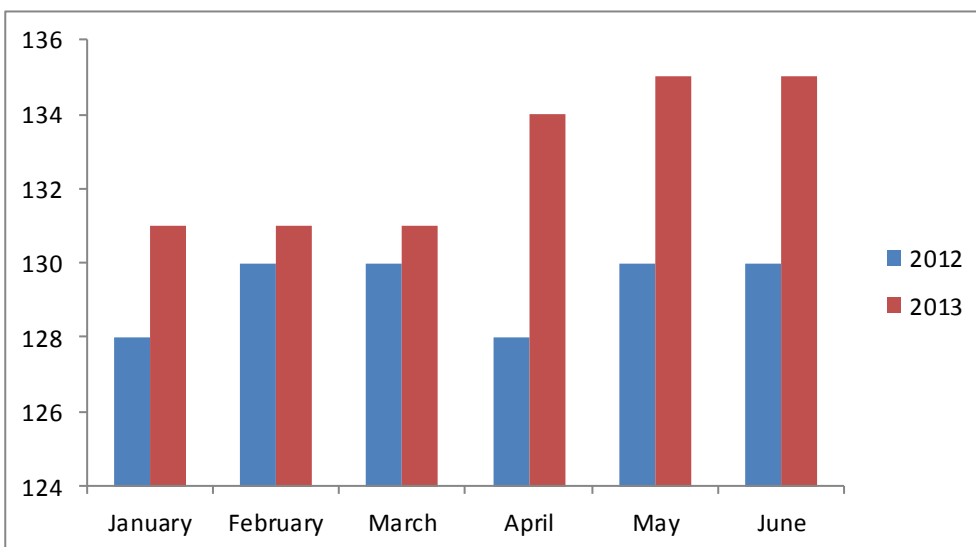


Table 21. Abandoned children by region

Months	Region							Gender		Total
	Gjakovë	Gjilan	Mitrovicë	Pejë	Prizren	Prishtinë	Ferizaj	Female	Male	
January	-	1	-	-	1	1	-	1	2	3
February	1	-	-	-	1	1	1	3	1	4
March	-	-	-	-	1	1		1	1	2
Total Q1	1	1	-	-	3	3	1	5	4	9
April	-	-	1	-	-	3	-	-	4	4
May	1	1	-	-	-	3	1	-	6	6
June	-	1	-	-	1	-	2	3	1	4
Total Q2	1	2	1	-	2	6	-	3	11	14

In the second quarter 2013 were reported a total of 14 abandoned children, 78.6% of children were male.

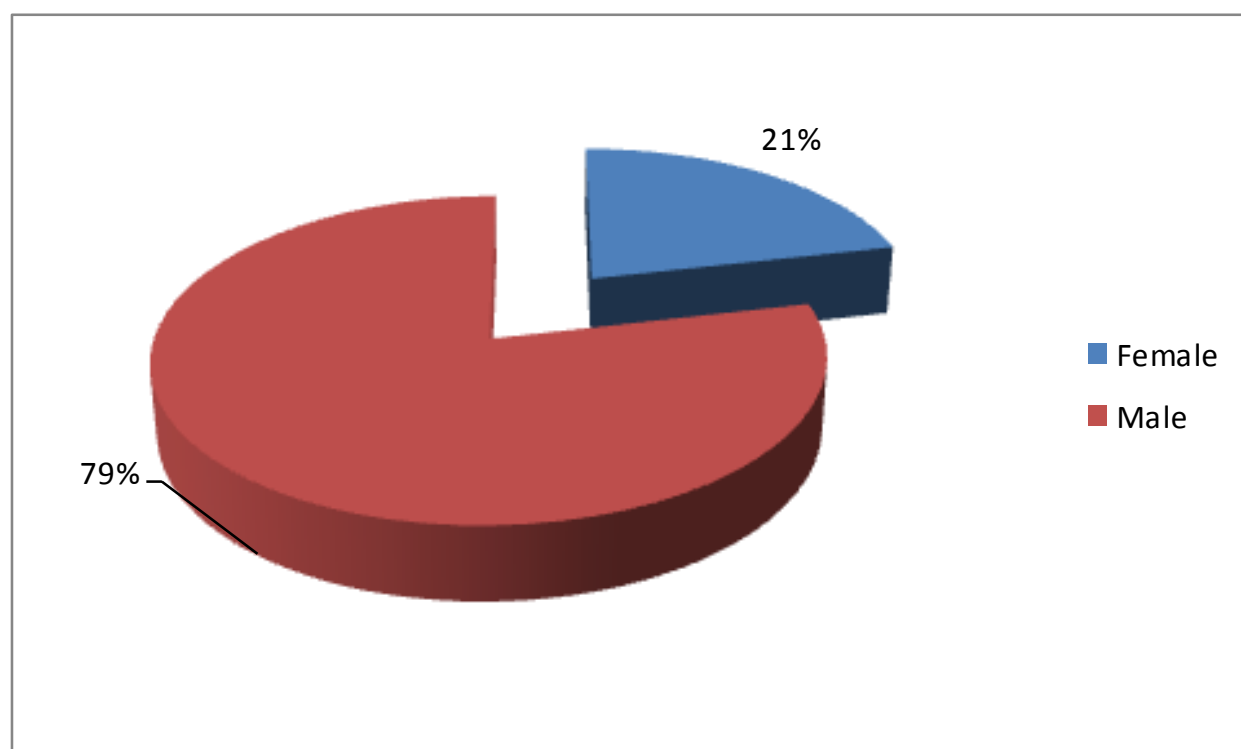
Graph 19. The number of children abandoned by region

Table 22. Number of abandoned children in Q2 2012/2013

Months	Years	
	2012	2013
January	3	3
February	5	4
March	4	2
Total Q1	12	9
April	3	4
May	9	6
June	5	4
Total Q2	17	14

Compared with the second quarter of 2012, the number of children abandoned in the second quarter 2013 is lower for 3 or 18%.

Graph 20. The number of abandoned children in Q2 2012/2013

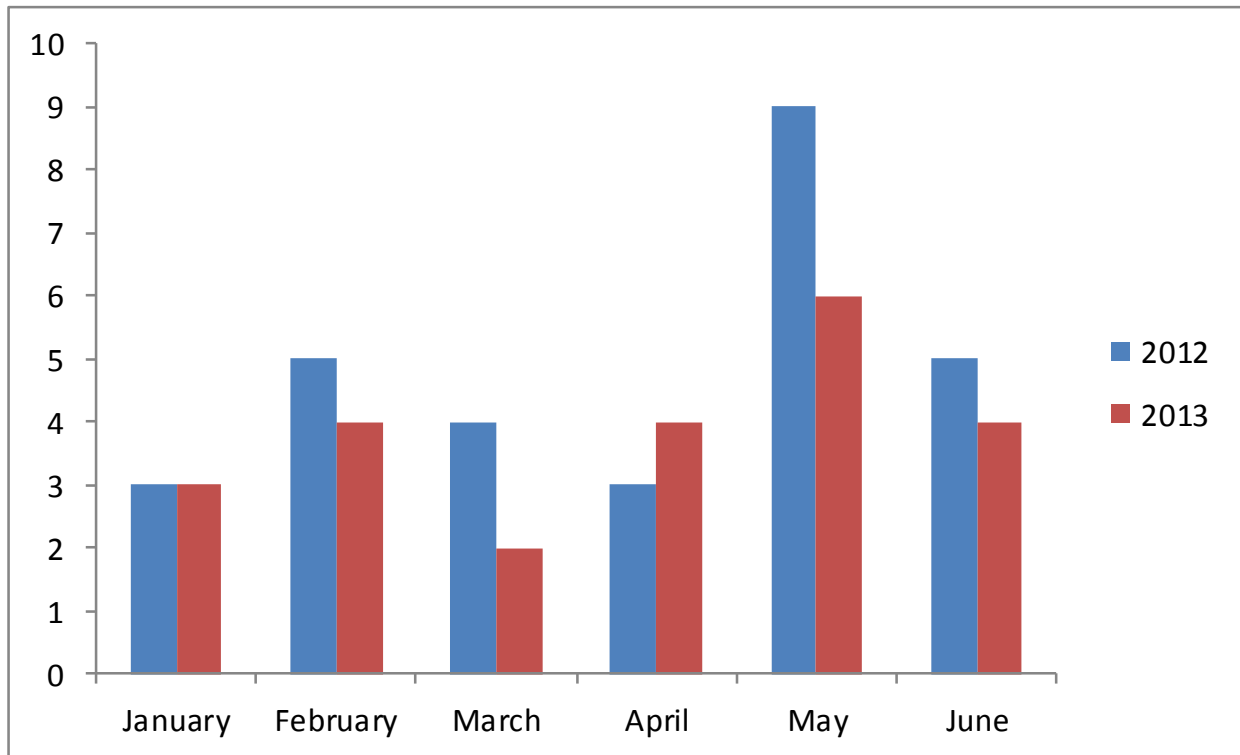


Table 23. Families that have benefited social assistance by region

Months	Region							
	Gjakovë	Gjilan	Mitrovicë	Pejë	Prizren	Prishtinë	Ferizaj	Total
January	2.868	2.811	7.604	3.204	3.538	7.996	3.227	31.248
February	2.889	2.809	7.645	3.223	3.597	7.990	3.244	31.397
March	2.919	2.796	7.774	3.249	3.611	8.117	3.274	31.740
April	2.935	2.805	7.695	3.265	3.630	8.143	3.260	31.733
May	2.933	2.773	7.703	3.261	3.606	8.153	3.274	31.703
June	2.915	2.772	7.695	3.269	3.580	8.068	3.281	31.580

The largest number of families benefiting from social assistance schemes is in Prishtina region.

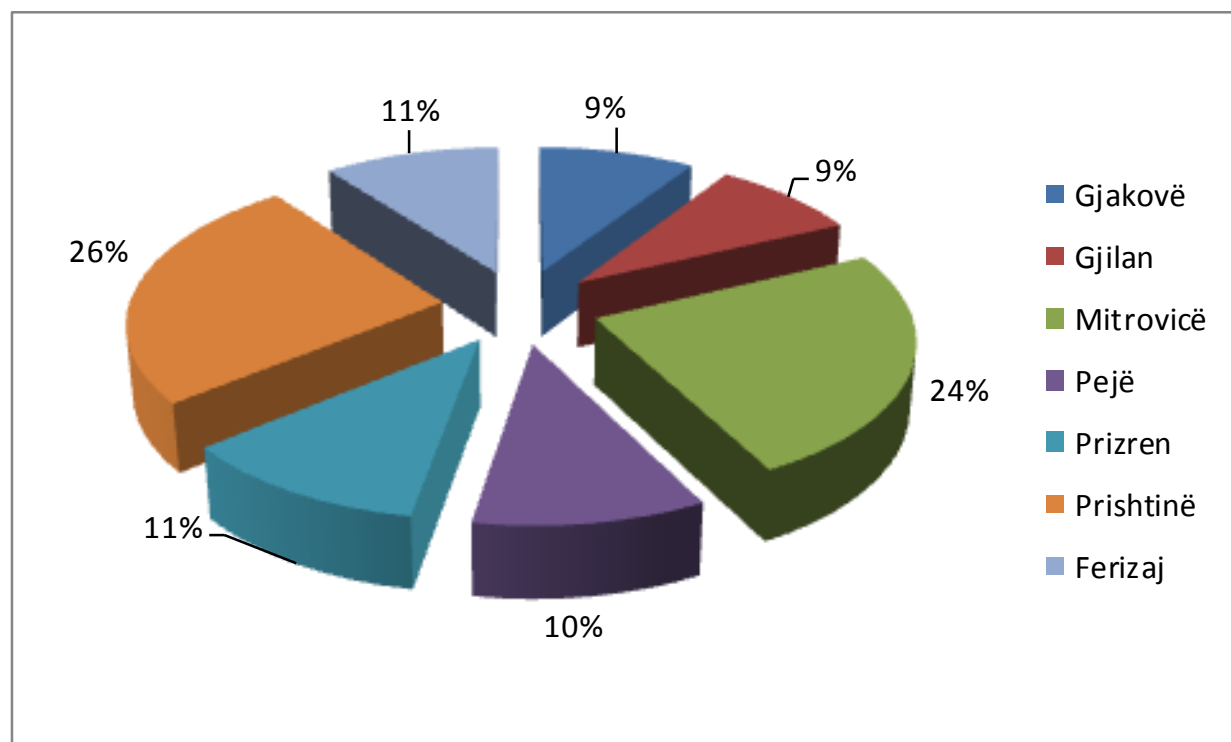
Graph 21. Number of households receiving social assistance by region

Table 24. Members of households receiving social assistance by region

Months	Region							
	Gjakovë	Gjilan	Mitrovicë	Pejë	Prizren	Prishtinë	Ferizaj	Total
January	12.861	11.267	30.117	13.970	15.248	35.398	14.457	133.318
February	12.930	11.214	30.370	14.051	15.510	35.361	14.518	133.954
March	13.069	11.174	30.951	14.143	15.578	35.867	14.664	135.446
April	13.115	11.197	30.760	14.192	15.690	36.033	14.604	135.591
May	13.066	11.018	30.720	14.225	15.567	36.101	14.657	135.354
June	12.929	10.997	30.616	14.204	15.511	35.595	14.692	134.544

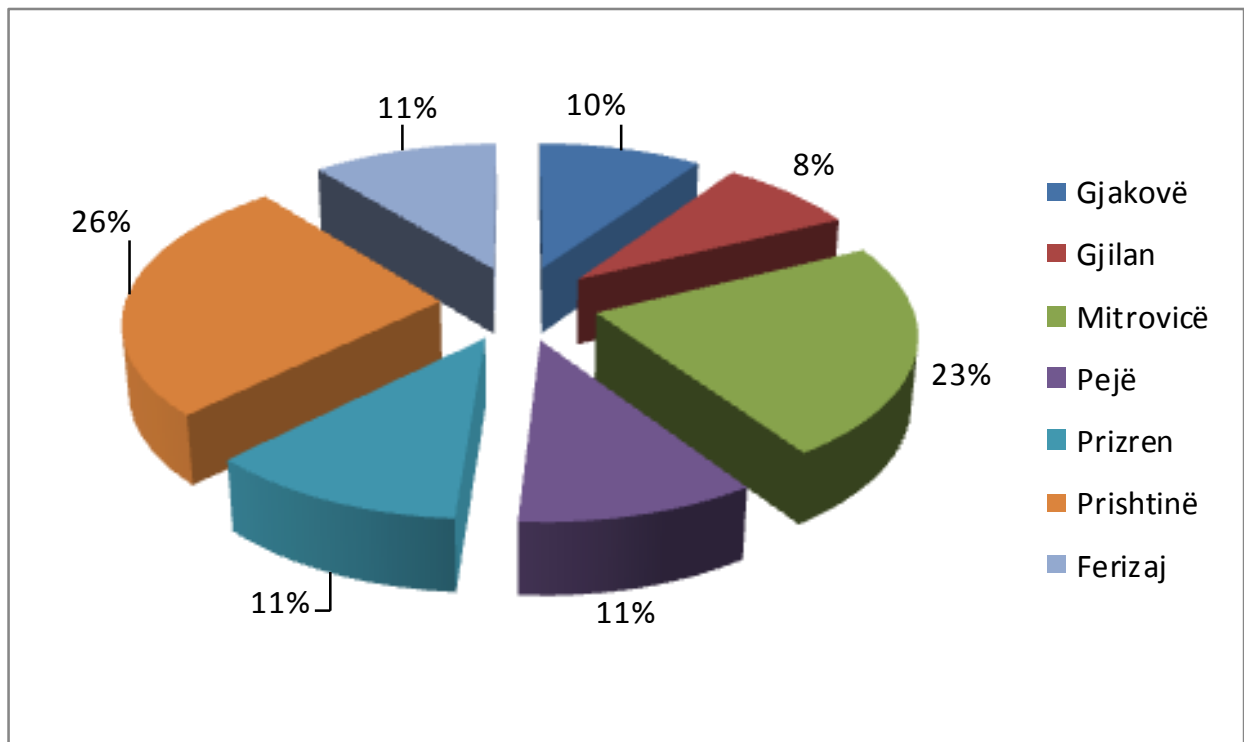
Graph 22. Number of members of households receiving social assistance by region

Table 25. Families and members of households receiving social assistance by region and total payments**Gjakovë**

Months	Families	Members	Amount in €
January	2.868	12.861	225.385,00 €
February	2.889	12.930	227.660,00 €
March	2.919	13.069	229.130,00 €
April	2.935	13.115	226.860,00 €
May	2.933	13.066	228.945,00 €
June	2.915	12.929	227.005,00 €

Gjilan

Months	Families	Members	Amount in €
January	2.811	11.267	208.670,00 €
February	2.809	11.214	209.440,00 €
March	2.796	11.174	207.295,00 €
April	2.805	11.197	206.485,00 €
May	2.773	11.018	204.395,00 €
June	2.772	10.997	204.265,00 €

Mitrovicë

Months	Families	Members	Amount in €
January	7.604	30.117	552.179,00 €
February	7.645	30.370	560.944,00 €
March	7.774	30.951	564.859,00 €
April	7.695	30.760	557.074,00 €
May	7.703	30.720	559.310,00 €
June	7.695	30.616	560.616,00 €

Pejë

Months	Families	Members	Amount in €
January	3.204	13.970	247.790,00 €
February	3.223	14.051	249.565,00 €
March	3.249	14.143	250.310,00 €
April	3.265	14.192	248.930,00 €
May	3.261	14.225	251.120,00 €
June	3.269	14.204	251.460,00 €

Prizren

Months	Families	Members	Amount in €
January	3.538	15.248	271.849,00 €
February	3.597	15.510	277.134,00 €
March	3.611	15.578	275.784,00 €
April	3.630	15.690	274.454,00 €
May	3.606	15.567	275.524,00 €
June	3.580	15.511	274.709,00 €

Prishtinë

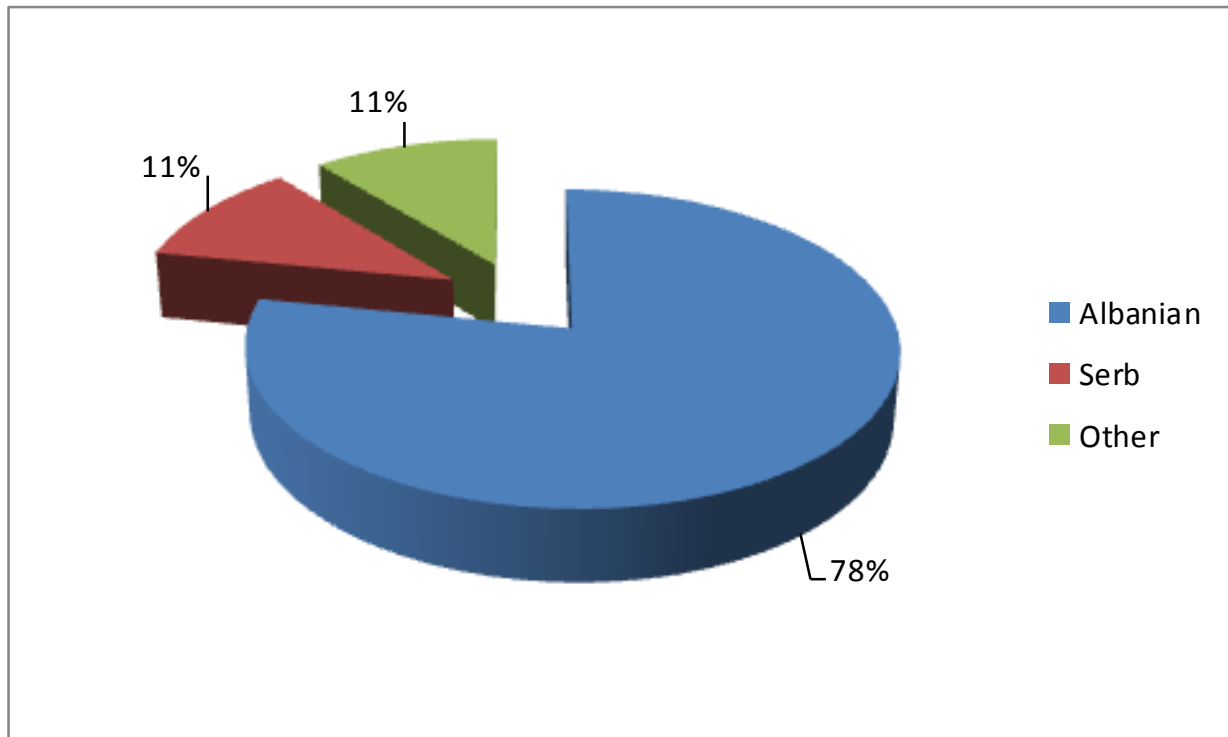
Months	Families	Members	Amount in €
January	7.996	35.398	623.440,00 €
February	7.990	35.361	631.478,00 €
March	8.117	35.867	631.513,00 €
April	8.143	36.033	628.673,00 €
May	8.153	36.101	633.263,00 €
June	8.068	35.595	627.973,00 €

Ferizaj

Months	Families	Members	Amount in €
January	3.227	14.457	252.428,00 €
February	3.244	14.518	255.693,00 €
March	3.274	14.664	255.148,00 €
April	3.260	14.604	252.493,00 €
May	3.274	14.657	254.763,00 €
June	3.281	14.692	256.798,00 €

Table 26. Families benefiting from social assistance scheme according to nationality

Months	Albanian	Serb	Other ¹³	Total
January	24.346	3.529	3.373	31.248
February	24.346	3.529	3.522	31.397
March	24.801	3.498	3.441	31.740
April	24.860	3.426	3.447	31.733
May	24.816	3.435	3.452	31.703
June	24.658	3.488	3.434	31.580

Graph 23. Ethnic structure of families benefiting from social assistance scheme

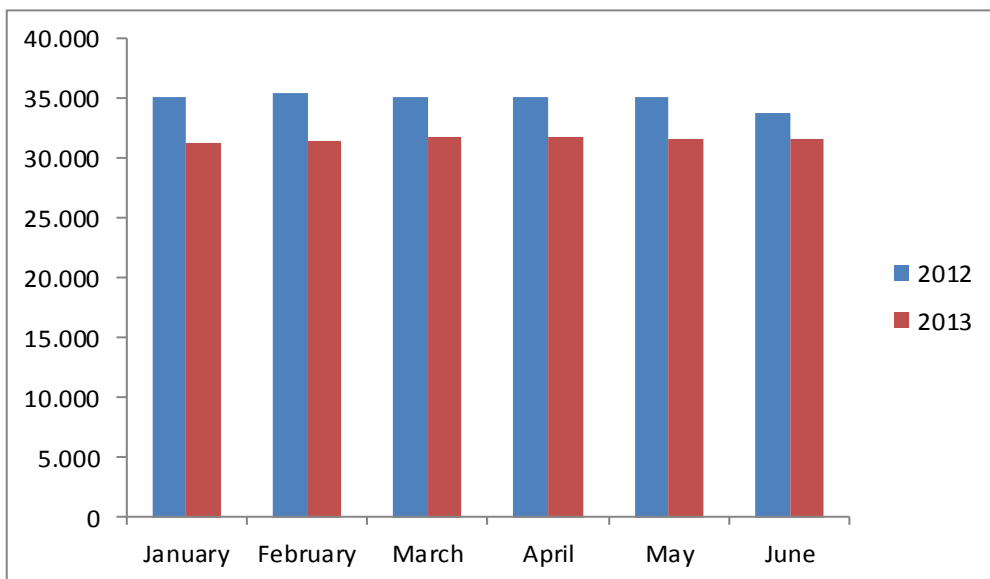
¹³ In others are included the number of families who belong to these ethnic nationalities: Turkish, Bosnian, Egyptians, Ashkali, Roma, Croats, etc.

Table 27. Number of families benefiting from social assistance scheme in Q2 2012/2013

Months	Years	
	2012	2013
January	35.159	31.248
February	35.435	31.397
March	35.180	31.740
April	35.180	31.733
May	35.108	31.703
June	33.773	31.580

Compared with the second quarter of 2012, the number of households receiving social assistance in the second quarter 2013 decreased 6.9% to 2.193 respectively.

Graph 24. Families benefiting from social assistance in Q2 2012/2013



Kosovo Agency of Statistics

short description

Kosovo Agency of Statistics is a professional institution which deals with collection, processing and publication of official statistical data. As such acts since 1948 and has passed through several historical stages, structured according to state regulation of those times.

On 2 August 1999, the Agency has resumed his professional work (after nine years of interruption of all statistical series detrimental to the interest of Kosovo), as an independent institution under the Ministry of Public Administration. Since 12.12.2011 the Agency operates in the frames of the Prime Minister's Office. Office is funded by the Kosovo Consolidated Budget, but also by donors for specific projects and for technical professional support.

Kosovo Agency of Statistics acts according to the Law No. 04/L-036 which entered into force on 12.12.2011. Strategic development plan 2009-2013 is the middle term implementation for the development of statistical system in correlation with the European Union statistics (EUROSTAT).

Kosovo Agency of Statistics has this organizational structure: production departments; (Department of Economic statistics and National Accounts, Department of Agriculture and Environment statistics and Department of Social statistics. **Support Departments;** Department of Methodology and Information Technology, Department of Policy Planning, Coordination and Communication, Department of Census and survey and Department of Administration. **Within the Agency we also established. Regional Offices;** Gjakove, Gjilan, Mitrovica, Peja, Prizren, Pristina and Ferizaj

In ASK are employed in total 139 workers, of them 104 (74,8 %) at the headquarters of the Agency, while in the Regional Offices, 35 (25,2%), with qualifying structure, 70,5% with university education to 29,5% with secondary education.

We have professional and technical cooperation with all Ministries of the Government of Kosovo, especially with the Ministry of Economy and Finance, Central Bank of Kosovo, with international institutions, EUROSTAT, International Monetary Fund, World Bank, Sweden's SIDA, DFID, UNFPA, UNDP, UNICEF, and with the statistical institutions of the countries in the region.

Kosovo Agency of Statistics almost completely covers the territory of Kosovo, based on the statistical structure of the enumeration areas as the basic unit and sole in the country from which it gets first hand information. All surveys conducted in the field use the extension of the samples in these enumeration areas but also a statistical methodology according to international recommendations. During the collection of statistical data and reports from reporting entities are involved professionals, technicians, administrators, servants of the country offices, field enumerators from regional offices, etc.

We have successfully implemented the project of Population Census, Households and Dwellings in 2011, Census that was not carried out since 1981. Results obtained from the Census will have an important role in compiling the development policies.

The mission of the Agency; to meet the needs of users with qualitative statistical data, objective, in time and space so that users have reliable base to conduct regular analysis in the interest of planning and project development at the municipal and country level. To support government institutions, scientific institutes, research academies, businesses in order to provide proper information for decision-makers and other users in Kosovo. Ongoing is preparation for the Census of Agriculture in Kosovo.

- **Address: KOSOVO AGENCY OF STATISTICS**
Street. "Zenel Salihu", No. 4, 10000 Pristina
- **Telephone:** +381 (0) 38 200 31 104
CEO: +381 (0) 38 200 31 112
- **Fax::** +381 (0) 38 235 033
- **E-mail:** social@rks-gov.net