



Republika e Kosovës  
Republika Kosova-Republic of Kosovo  
*Qeveria - Vlada - Government*  
Zyra e Kryeministrit -Ured Premijera -Office of the Prime Minister  
*Agjencia e Statistikave të Kosovës - Agencija za Statistike Kosova - Kosovo Agency of Statistics*

## Series 3: Economic Statistics

### Short Term Industry Statistics Q2 – 2016



AGJENCIA E STATISTIKAVE TË KOSOVËS  
AGENCIJA ZA STATISTIKE KOSOVA  
KOSOVO AGENCY OF STATISTICS

## **F o r e w o r d**

Kosovo Agency of Statistics (KAS) has prepared the publication of results of short-term industrial enterprises statistics for the period Q2 - 2016 (2012 = 100).

From the first quarter of 2012 onwards, this research is an integral part of the KAS Statistical Programme and is based on statements of enterprises. This survey provides the data that is intended to represent the performance in the industry (B - Quarrying, C - Manufacturing, D - Electricity, gas, steam and air conditioning supply, and E - Water supply; sewerage, waste management and remediation activities) on quarterly basis through which to understand the development of the industry cycle.

The results of this research at the same time are used for the needs of national accounts and are important in the preparation of Gross Domestic Product by product approach on a quarterly basis..

Publication was prepared by:

Ilir T. Berisha – Director of the Department

Ismajl Sahiti - Head of Division

Hysni Elshani - Head of economic statistics sector

Valdete Navakazi – Officer

Bekim Bojku – Officer

Luljeta Krasniqi – Officer

Muhamet Kastrati – SBR database manager

Proposals, suggestions and feedback can be sent:

(E-mail: [economic@rks-gov.net](mailto:economic@rks-gov.net))

September, 2016

Chief Executive Officer, KAS  
Mr. Isa Krasniqi

## Symbols and Abbreviations

KAS	-	Kosovo Agency of Statistics
NEA (Nace Rev 2)	-	Nomenclature of Economic Activities
TAK	-	Tax Administration of Kosovo
BRAK	-	Business Registration Agency of Kosovo
SBR	-	Statistical Business Register
SES	-	Short-term Enterprise Statistics

Q1	-	First Quarter
Q2	-	Second Quarter
Q3	-	Third Quarter
Q4	-	Fourth Quarter

### Symbols

:	-	Missing data
n/a	-	Not applicable

## Contents

	Page
1 Objective, methodology and scope of the survey .....	4
1.1. Objective .....	4
1.2. Methodology and the scope of the survey .....	4
1.3. Sample frame and sample selection .....	5
1.4. Procedures of data collection .....	5
2 Definitions and key indicators .....	6
2.1. Definitions .....	6
2.2. Key indicators .....	6
3 Industry.....	7
3.1. The structure of turnover from industrial activities (B, C, D and E) .....	7
3.2. Number of employees from industrial activities (B, C, D and E) .....	7
4 Turnover index and number of employees from industrial activities (B, C, D and E) .....	8
4.1. Industrial turnover index .....	8
4.2. Index of number of employees from industrial activity .....	10

## **1 Objective, methodology and scope of the survey**

### **1.1. Objective**

The main objective of the statistics of the short term industrial enterprises survey is to present quarterly trends across sectors (B, C, D and E) of Nomenclature of economic activities, NACE Rev. 2, through some economic indicators, enabling comparability of data in the international level by European standards for quarterly statistics. The survey aims to meet the demands for more comprehensive statistical information on the conditions of market economy and provides data on the economic activities of enterprises that exercise the activities of industry (B, C, D and E), across the country.

### **1.2. Methodology and the scope of the survey**

Short-term enterprise statistics for the second quarter of 2016 are published in accordance with Nomenclature of Economic Activities (NACE Rev. 2)

The survey covers industry activity in summary.

The methodology used for compiling the survey instruments, nomenclature and preparation of data for publication, is according to the Eurostat rules and recommendations. The questionnaire was developed in collaboration with Swedish experts and reviewed by the experts of the World Bank and International Monetary Fund.

Starting from the first quarter (Q1 - 2016), we have modified the questionnaire and sampling for the purpose of aligning with the EUROSTAT requirements and recommendations on Short-term Industry Statistics. After creating time series we will release the data results in Q1 - 2017.

Survey was conducted in the entire territory of Kosovo and includes data on economic activities:

B - Extractive industries (mining and quarrying)

C – Manufacturing

D – Electricity, gas, steam and air conditioning supply

E – Water supply; sewerage, waste management and remediation activities.

### **1.3. Sample frame and sample selection**

For creation (definition) of sample frame were used the data from the statistical register of businesses. All enterprises that have declared one of the taxes during the reference to previous years were considered active. The sample selection is done on the basis of criteria which included all enterprises representing 80% of the turnover for the relevant activity of NACE Rev2. The number of enterprises included in the survey was 326 enterprises dealing with industrial production.

### **1.4. Procedures of data collection**

Data collection was carried out mainly through:

- direct interview by KAS surveyors.
- sending the questionnaire electronically.
- leaving the questionnaire to be filled by business.

Field survey occurs 20 days after the end of the quarter and the deadline for collecting the data from the field is 40 days after the field work/outreach.

## 2 Definitions and key indicators

### 2.1. Definitions

**Enterprise** is the smallest unit of combination of legal unit with the unit of production or services which is independent in decision-making, especially for the use of its material and monetary resources. An enterprise may carry one or several economic activities.

**Active enterprise** – are considered only those enterprises that have declared one of the taxes or any employees during the reference.

**The value of turnover from production** - represents the turnover made by production excluding value added tax.

**Indices** – Express the change in time of a given variable or variables as a whole. Volume index is calculated by the Laspeyres formula.

**Turnover value index of production** - Objective turnover value index shows the evolution of the market.

**Number of employees** - Total number of paid employees working in enterprises (excluding family members who work without pay).

**Index of number of employees** - employment index represents the evolution of employment in the surveyed enterprises.

### 2.2. Key indicators

**Indicators** - are given in index form, yearly change in percentage, quarterly change in percentage of base reference year, currently 2012 = 100. The data do not represent absolute values.

**Quarterly change in percentage** - Measures the percentage change of economic indicator of current quarter with the previous quarter of the same year.

**Review** - Indexes can be reviewed for several reasons: Additional information, methodological changes or revaluations of coefficients used, etc.

## **3 Industry**

### **3.1. The structure of turnover from industrial activities (B, C, D and E)**

#### **Second quarter 2016 - First quarter 2016**

In the second quarter of 2016 compared with the first quarter of 2016, Mining and quarrying (B) had an increase of 32.8%, Manufacturing (C) with 27.4%, as well as Water supply; sewerage; waste management and remediation activities (E) with 6.5%, while the decline was only in the Electricity, gas, steam and air conditioning supply (D) to (6.1%).

#### **Second quarter 2016 - Second quarter 2015**

Compared with the same quarter of the previous year (Q2 2015), the activity Electricity, gas, steam and air conditioning supply (D) had an increase of 30.8%, activity Mining and quarrying (B) with 13.9% and Water supply; sewerage; waste management and remediation activities (E) with 3.8%, and Manufacturing (C) decreased by (7.5%).

### **3.2. Number of employees from industrial activities (B, C, D and E)**

#### **Second quarter 2016 – First quarter 2016**

The number of employees in the second quarter of 2016 compared to the first quarter of 2016 increased in the activity of Water supply; sewerage; waste management and remediation activities (E) by 3.4% and in the section Mining and quarrying (B) 0.6 %, while the decrease has been noted to activity Electricity, gas, steam and air conditioning supply (D) to (1.0%) and Manufacturing (C) with (0.8%).

#### **Second quarter 2016 – Second quarter 2015**

In relation to the second quarter of 2015, in the second quarter of 2016 the number of employees had increased in the activity Water supply; sewerage; waste management and remediation activities (E) 0.9%, Manufacturing (C) 0.3 % while in the following activities the number of employees has been lower: Electricity, gas, steam and air conditioning supply (D) to (4.0%) and Mining and quarrying (B) to (0.3%).



## 4 Turnover index and number of employees from industrial activities (B, C, D and E)

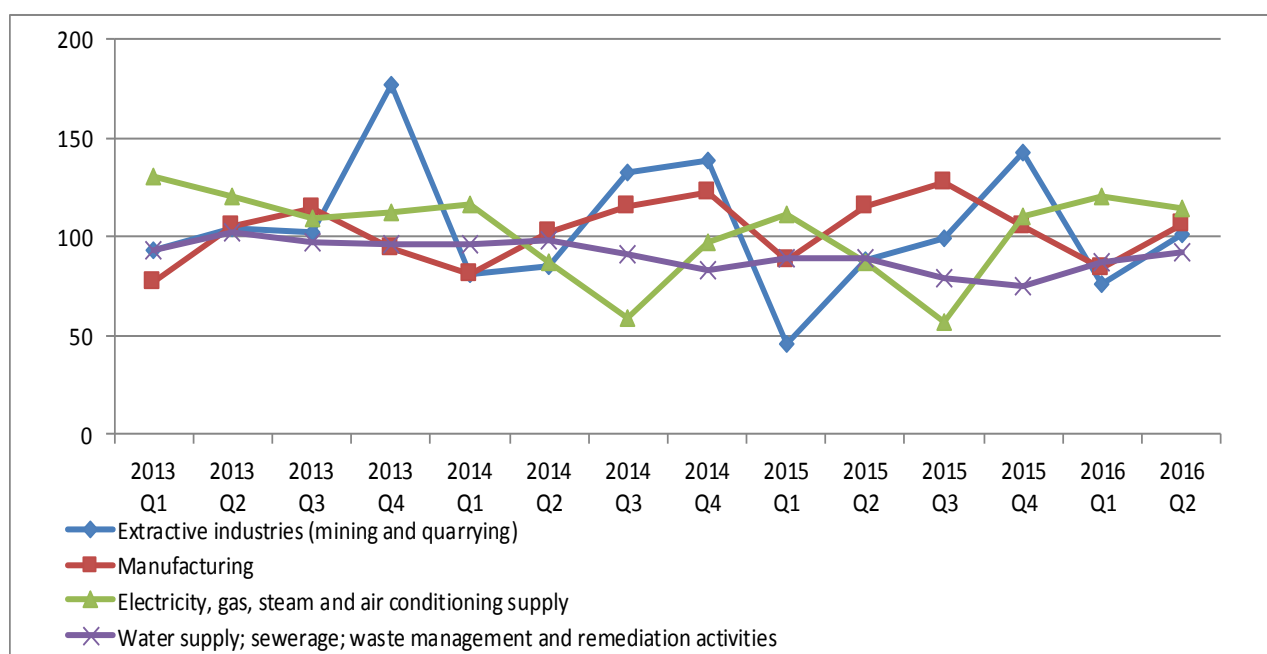
### 4.1. Industrial turnover index

**Tab 1. Industrial turnover index (2012 = 100)**

Section	Nace Rev 2	Economic activity	2013 Q1	2013 Q2	2013 Q3	2013 Q4	2014 Q1	2014 Q2	2014 Q3	2014 Q4	2015 Q1	2015 Q2	2015 Q3	2015 Q4	2016 Q1	2016 Q2
B	05-09	Extractive industries (mining and quarrying)	93.6	104.4	102.4	176.9	81.3	85.3	132.4	138.2	45.8	88.6	99.4	143.0	76.0	100.9
C	10-33	Manufacturing	77.3	105.5	114.9	94.6	81.3	102.0	115.4	122.1	87.9	115.3	127.7	105.5	83.7	106.7
D	35	Electricity, gas, steam and air conditioning supply	131.0	120.6	109.5	112.9	116.4	87.1	59.4	97.6	111.3	87.1	56.5	110.6	120.1	113.9
E	36-39	Water supply; sewerage; waste management and remediation activities	93.5	102.5	97.4	96.7	96.6	98.6	91.5	83.1	89.3	89.2	79.4	75.0	87.0	92.6

\* Sector D (Electricity, gas, steam and air conditioning supply) does not include the distribution of electricity.

**Graph 1. Turnover index from the production according to activity B, C, D and E (2012 = 100)**



Tab 1a. Change of industrial turnover index in quarters with previous quarter

Section	Nace Rev 2	Economic activity	%													
			2013 Q1	2013 Q2	2013 Q3	2013 Q4	2014 Q1	2014 Q2	2014 Q3	2014 Q4	2015 Q1	2015 Q2	2015 Q3	2015 Q4	2016 Q1	2016 Q2
			2012 Q4	2013 Q1	2013 Q2	2013 Q3	2013 Q4	2014 Q1	2014 Q2	2014 Q3	2014 Q4	2015 Q1	2015 Q2	2015 Q3	2015 Q4	2016 Q1
B	05-09	Extractive industries (mining and quarrying)	-20.8	11.6	-1.9	72.8	-54.1	5.0	55.2	4.4	-66.9	93.6	12.2	43.9	-46.9	32.8
C	10-33	Manufacturing	-30.8	36.6	8.9	-17.7	-14.1	25.5	13.1	5.9	-28.0	31.2	10.7	-17.4	-20.7	27.4
D	35	Electricity, gas, steam and air conditioning supply	6.4	-7.9	-9.2	3.0	3.2	-25.2	-31.8	64.4	14.0	-21.8	-35.1	95.7	8.6	-5.1
E	36-39	Water supply; sewerage; waste management and remediation activities	-3.8	9.6	-5.0	-0.7	-0.2	2.1	-7.2	-9.2	7.5	-0.1	-11.0	-5.5	16.0	6.5

Tab 1b. Change of industrial turnover index in quarterly periods with the same quarter of the previous year

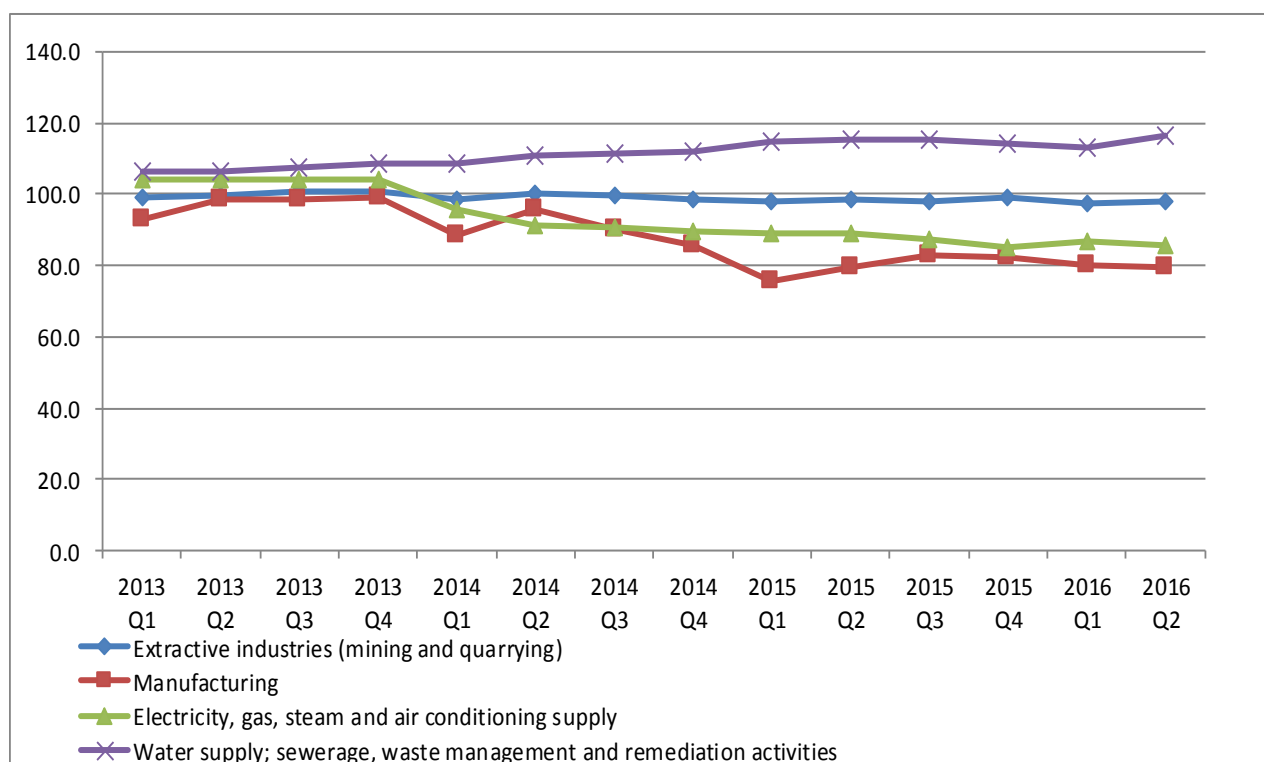
Section	Nace Rev 2	Economic activity	%													
			2013 Q1	2013 Q2	2013 Q3	2013 Q4	2014 Q1	2014 Q2	2014 Q3	2014 Q4	2015 Q1	2015 Q2	2015 Q3	2015 Q4	2016 Q1	2016 Q2
			2012 Q1	2012 Q2	2012 Q3	2012 Q4	2013 Q1	2013 Q2	2013 Q3	2013 Q4	2014 Q1	2014 Q2	2014 Q3	2014 Q4	2015 Q1	2015 Q2
B	05-09	Extractive industries (mining and quarrying)	40.8	25.1	-22.4	49.8	-13.2	-18.3	29.3	-21.9	-43.7	3.9	-24.9	3.5	66.0	13.9
C	10-33	Manufacturing	2.1	3.0	4.2	-15.3	5.2	-3.4	0.4	29.1	8.2	13.1	10.7	-13.6	-4.8	-7.5
D	35	Electricity, gas, steam and air conditioning supply	9.9	51.1	40.7	-8.3	-11.1	-27.8	-45.8	-13.5	-4.4	0.0	-4.8	13.3	7.9	30.8
E	36-39	Water supply; sewerage; waste management and remediation activities	0.9	-3.6	-6.1	-0.5	3.3	-3.8	-6.1	-14.1	-7.5	-9.5	-13.2	-9.7	-2.6	3.8

## 4.2. Index of number of employees from industrial activity

**Tab 2. Index of number of employees from industrial activity (2012 = 100)**

Sector	Nace Rev 2	Economic activity	2013 Q1	2013 Q2	2013 Q3	2013 Q4	2014 Q1	2014 Q2	2014 Q3	2014 Q4	2015 Q1	2015 Q2	2015 Q3	2015 Q4	2016 Q1	2016 Q2
B	05-09	Extractive industries (mining and quarrying)	98.9	99.7	101.1	101.0	98.4	100.3	99.5	98.7	98.1	98.3	98.2	99.1	97.4	98.1
C	10-33	Manufacturing	92.8	98.6	98.8	98.9	88.5	95.6	90.1	85.7	75.6	79.4	82.7	82.2	80.3	79.7
D	35	Electricity, gas, steam and air conditioning supply	104.2	104.2	104.1	104.1	95.7	91.5	90.6	89.7	89.3	89.3	87.4	85.2	86.5	85.7
E	36-39	Water supply; sewerage, waste management and remediation activities	106.3	106.5	107.3	108.5	108.8	111.1	111.3	111.9	114.6	115.6	115.5	114.2	112.8	116.7

**Graph 2. The number of employees according to activities B, C, D and E (2012 = 100)**



**Tab 2a. Change of the index of number of employees from industrial activity through quarterly periods with the previous quarter**

Sector	Nace Rev 2	Economic activity	%													
			2013 Q1 2012 Q4	2013 Q2 2013 Q1	2013 Q3 2013 Q2	2013 Q4 2013 Q3	2014 Q1 2013 Q4	2014 Q2 2014 Q1	2014 Q3 2014 Q2	2014 Q4 2014 Q3	2015 Q1 2014 Q4	2015 Q2 2015 Q1	2015 Q3 2015 Q2	2015 Q4 2015 Q3	2016 Q1 2015 Q4	2016 Q2 2016 Q1
B	05-09	Extractive industries (mining and quarrying)	-1.8	0.9	1.3	0.0	-2.6	1.9	-0.9	-0.8	-0.6	0.2	-0.1	1.0	-1.7	0.6
C	10-33	Manufacturing	-7.6	6.2	0.3	0.1	-10.5	8.1	-5.8	-4.8	-11.8	5.0	4.1	-0.5	-2.4	-0.8
D	35	Electricity, gas, steam and air conditioning supply	4.2	0.0	-0.1	0.0	-8.1	-4.4	-1.0	-1.0	-0.4	0.0	-2.1	-2.6	1.6	-1.0
E	36-39	Water supply; sewerage, waste management and remediation activities	0.2	0.3	0.7	1.1	0.3	2.1	0.1	0.6	2.4	0.8	0.0	-1.2	-1.2	3.4

**Tab 2b. Change of the index of number of employees from industrial activity through quarterly periods with the same quarter of the previous year**

Sector	Nace Rev 2	Economic activity	%													
			2013 Q1 2012 Q1	2013 Q2 2012 Q2	2013 Q3 2012 Q3	2013 Q4 2012 Q4	2014 Q1 2013 Q1	2014 Q2 2013 Q2	2014 Q3 2013 Q3	2014 Q4 2013 Q4	2015 Q1 2014 Q1	2015 Q2 2014 Q2	2015 Q3 2014 Q3	2015 Q4 2014 Q4	2016 Q1 2015 Q1	2016 Q2 2015 Q2
B	05-09	Extractive industries (mining and quarrying)	0.0	-0.3	0.6	0.4	-0.5	0.6	-1.6	-2.4	-0.3	-2.0	-1.3	0.5	-0.7	-0.3
C	10-33	Manufacturing	-3.6	-2.1	-3.7	-1.6	-4.7	-3.0	-8.8	-13.3	-14.5	-16.9	-8.2	-4.1	6.2	0.3
D	35	Electricity, gas, steam and air conditioning supply	4.1	4.1	4.2	4.1	-8.1	-12.2	-13.0	-13.8	-6.7	-2.4	-3.5	-5.0	-3.1	-4.0
E	36-39	Water supply; sewerage, waste management and remediation activities	14.9	10.4	2.2	2.3	2.4	4.3	3.7	3.2	5.3	4.0	3.8	2.0	-1.6	0.9

# Kosovo Agency of Statistics

## *short description*

**Kosovo Agency of Statistics** is a professional institution which deals with collection, processing and publication of official statistical data. As such acts since 1948 and has passed through several historical stages, structured according to state regulation of those times.

On 2 August 1999, the Agency has resumed his professional work (after nine years of interruption of all statistical series detrimental to the interest of Kosovo), as an independent institution under the Ministry of Public Administration. Since 12.12.2011 the Agency operates in the frames of the Prime Minister's Office. Office is funded by the Kosovo Consolidated Budget, but also by donors for specific projects and for technical professional support.

**Kosovo Agency of Statistics** acts according to the Law No. 04/L-036 which entered into force on 12.12.2011. Strategic development plan 2009-2013 is the middle term implementation for the development of statistical system in correlation with the European Union statistics (EUROSTAT).

**Kosovo Agency of Statistics** has this organizational structure: production departments; (Department of Economic statistics and National Accounts, Department of Agriculture and Environment statistics and Department of Social statistics. **Support Departments;** Department of Methodology and Information Technology, Department of Policy Planning, Coordination and Communication, Department of Census and survey and Department of Administration. **Within the Agency we also established Regional Offices;** Gjakove, Gjilan, Mitrovica, Peja, Prizren, Pristina and Ferizaj

In ASK are employed in total 139 workers, of them 104 (74,8 %) at the headquarters of the Agency, while in the Regional Offices, 35 (25,2%), with qualifying structure, 70,5% with university education to 29,5% with secondary education.

We have professional and technical cooperation with all Ministries of the Government of Kosovo, especially with the Ministry of Economy and Finance, Central Bank of Kosovo, with international institutions, EUROSTAT, International Monetary Fund, World Bank, Sweden's SIDA, DFID, UNFPA, UNDP, UNIVF, and with the statistical institutions of the countries in the region.

**Kosovo Agency of Statistics** almost completely covers the territory of Kosovo, based on the statistical structure of the enumeration areas as the basic unit and sole in the country from which it gets first hand information. All surveys conducted in the field use the extension of the samples in these enumeration areas but also a statistical methodology according to international recommendations. During the collection of statistical data and reports from reporting entities are involved professionals, technicians, administrators, servants of the country offices, field enumerators from regional offices, etc.

We have successfully implemented the project of Population Census, Households and Dwellings in 2011, Census that was not carried out since 1981. Results obtained from the Census will have an important role in compiling the development policies.

**The mission of the Agency;** to meet the needs of users with qualitative statistical data, objective, in time and space so that users have reliable base to conduct regular analysis in the interest of planning and project development at the municipal and country level. To support government institutions, scientific institutes, research academies, businesses in order to provide proper information for decision-makers and other users in Kosovo

## **Address: KOSOVO AGENCY OF STATISTICS**

Street. "Zenel Salihu", No. 4, 10000 Pristina

- **Telephone:** +381 (0) 38 200 31 129  
CEO: +381 (0) 38 200 31 112
- **Fax::** +381 (0) 38 235 033
- **E-mail:** : [infoask@rks-gov.net](mailto:infoask@rks-gov.net)
- **Ueb-page:** <http://ask.rks-gov.net>