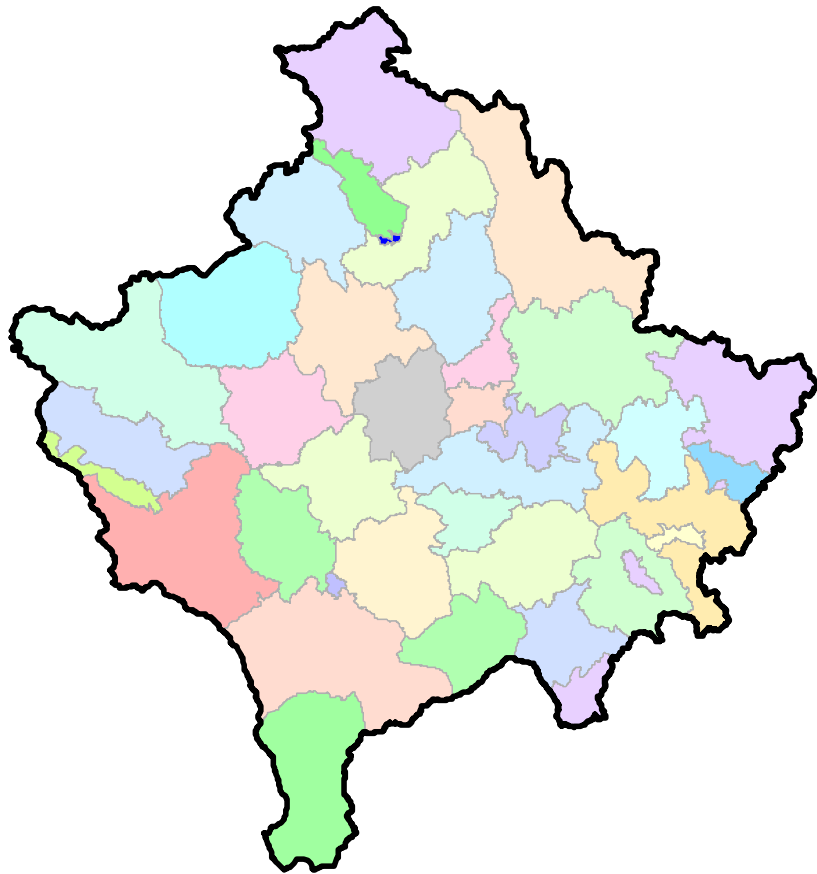




Republika e Kosovës
Republika Kosova-Republic of Kosovo
Qeveria - Vlada - Government
Zyra e Kryeministrit -Ured Premijera -Office of the Prime Minister
Agjencia e Statistikave të Kosovës - Agencija za Statistike Kosova - Kosovo Agency of Statistics

Series 3: Economic Statistics

Gross Domestic Product (Q2 - 2015)



ask

AGJENCIA E STATISTIKAVE TË KOSOVËS
AGENCIJA ZA STATISTIKE KOSOVA
KOSOVO AGENCY OF STATISTICS

QUARTERLY GROSS DOMESTIC PRODUCT – Q2 2015

Kosovo Agency of Statistics (KAS) publishes Quarterly Gross Domestic Product for Q2 2015 by production and expenditure approaches, at current and constant prices based on ESA 2010 methodology.

GDP in the Q2 of 2015 is increased with 3.4% compared with the corresponding quarter of previous year. The GVA by economic activities increase as follows: Transportation and storage 21.5%, Mining and quarrying 21.1%, Construction 20.6%, Real estate activities 11.2%, Electricity, gas, steam and air conditioning supply-Water supply; sewerage, waste management and remediation activities 11.0%, Financial and insurance activities 9.5%, Wholesale and retail trade; repair of motor vehicles and motorcycles 7.2%. Decreases were recorded in the following activities: Other services 46.8%, Public administration 8.6%, Accommodation and food service activities 6.1%, Agriculture, forestry and fishing 3.4%.

The GDP by expenditure approach increases due especially to the Gross capital formation 10.2%, Export of goods and services 9.9%, Import of goods and services 6.1%, Final consumption of household & NPISH 3.1%, compared with the same quarter of previous year. Decreases were recorded in the following: Final consumption of Government 5.3%,

Note: Respecting the principle of transparency the quarterly GDP figures for 2014 will be revised in accordance on methodology based on published annual data of 2014. Revised figures will be on users disposal when the Quarterly GDP (Q3) 2015 will be published.

This publication was prepared by: <http://esk.rks-gov.net/>

Ilir T. Berisha- Director of Economic Statistics and National Accounts

Xhevdie Fetahu- chief of division

Ylli Shala- senior officer

Ilir Mazrekaj- senior officer

Emine Bajrami- senior officer

Florie Krapic- senior officer

Nysret Sylejmani- senior officer

Besim Mehmeti- senior officer

Have Kryeziu –Sida

Andeta Krasniqi –Sida

Kaltrina Veselaj –Sida

Table 1: Quarterly Gross Domestic Product (QGDP)

Quarters	2013				2014				2015	
	I	II	III	IV	I	II	III	IV	I	II
GDP in current prices	1.069,3	1.395,7	1.466,3	1.395,4	1.165,8	1.387,1	1.508,4	1.423,7	1.182,5	1.434,7
GDP in prices of previous year	1.064,9	1.382,4	1.431,0	1.354,6	1.087,3	1.361,0	1.486,2	1.440,9	1.168,3	1.433,8
Real growth rate % *	9,8	6,5	2,1	(2,9)	1,7	(2,5)	1,4	3,3	0,22	3,37

* With corresponding period of the previous year

Graph 1. Real growth rate compared with the corresponding quarter of previous year

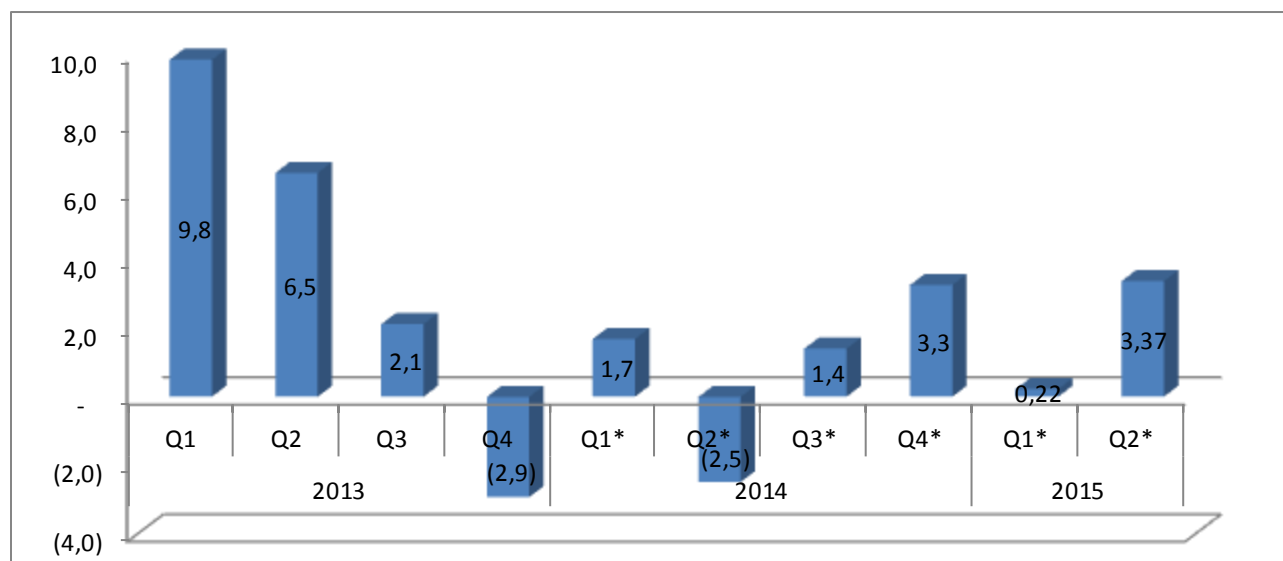


Table 2. Quarterly Gross Domestic Product by economic activities in current prices

(in million Euro)

Nace Rev.2		Agriculture, forestry and fishing	Mining and quarrying	Manufacturing	Electricity, gas, steam and air conditioning supply; sewerage, waste management and remediation activities	Construction	Wholesale and retail trade; repair of motor vehicles and motorcycles	Transportation and storage	Accommodation and food service activities	Financial and insurance activities	Real estate activities	Public administration	Other services	GVA at basic prices	Taxes less subsidies on products	GDP
		A	B	C	D+E	F	G	H	I	K	L	O	J+M+N+P+Q+R+S+T			
	2013	638,7	118,3	584,8	196,9	352,2	655,4	233,7	49,8	213,3	475,5	748,0	169,0	4.435,6	891,1	5.326,7
	2014*	627,2	125,4	580,9	185,6	320,0	679,2	215,2	56,0	227,4	545,9	794,5	181,6	4.538,8	946,1	5.484,9
2013	Q1	136,0	30,9	100,5	50,2	62,9	126,0	49,1	11,2	49,8	121,2	149,9	25,1	912,7	156,5	1.069,3
	Q2	182,5	29,1	144,5	55,8	105,3	159,8	58,1	12,3	53,8	117,7	187,3	68,0	1.174,2	221,5	1.395,7
	Q3	165,8	25,9	174,5	48,9	107,3	191,4	77,3	14,4	53,5	117,8	185,1	31,4	1.193,4	272,9	1.466,3
	Q4	154,4	32,4	165,3	42,1	76,6	178,2	49,2	11,9	56,1	118,9	225,7	44,5	1.155,3	240,1	1.395,4
2014	Q1*	134,2	36,9	95,8	51,5	64,8	124,2	44,7	14,9	53,7	131,8	186,1	45,1	983,6	182,1	1.165,8
	Q2*	179,7	33,3	139,5	48,4	92,7	142,9	51,0	12,5	60,5	130,9	210,0	61,6	1.163,0	224,1	1.387,1
	Q3*	160,0	26,7	175,2	36,2	83,9	222,5	72,1	16,8	57,8	140,1	206,8	37,7	1.235,7	272,7	1.508,4
	Q4*	153,3	28,5	170,3	49,5	78,7	189,6	47,4	11,8	55,4	143,1	191,7	37,2	1.156,4	267,3	1.423,7
2015	Q1*	124,6	34,1	96,2	44,3	56,7	156,8	42,7	19,2	53,5	130,8	190,4	38,3	987,6	194,9	1.182,5
	Q2*	173,7	40,3	140,1	57,5	119,3	153,2	61,9	11,5	53,6	147,3	189,8	32,8	1.181,0	253,6	1.434,7

*Estimated

Table 3. Quarterly Gross Domestic Product by activities in constant prices

(in million Euro)

Nace Rev.2		Agriculture, forestry and fishing	Mining and quarrying	Manufacturing	Electricity, gas, steam and air conditioning supply; Water supply; sewerage, waste management and remediation activities	Construction	Wholesale and retail trade; repair of motor vehicles and motorcycles	Transportation and storage	Accommodation and food service activities	Financial and insurance activities	Real estate activities	Public administration	Other services	GVA at basic prices	Taxes less subsidies on product	GDP	In % as against the corresponding period of the previous year
		A	B	C	D+E	F	G	H	I	K	L	O	J+M+N+P+Q+R+S+T				
	2013	626,3	131,5	585,0	189,4	350,1	638,7	217,7	38,1	202,1	455,3	742,7	182,5	4.359,3	873,5	5.232,9	103,4
	2014*	641,4	118,5	586,7	172,6	331,1	690,1	211,8	53,3	221,3	501,3	749,5	170,1	4.447,7	927,8	5.375,5	100,9
2013	Q1	124,4	33,8	109,7	46,9	61,6	117,7	43,9	8,6	45,6	126,2	145,5	37,2	901,0	163,9	1.064,9	109,8
	Q2	173,0	30,2	145,9	54,9	105,0	152,4	54,9	9,4	51,3	119,5	185,3	41,8	1.123,6	258,8	1.382,4	106,5
	Q3	170,6	30,2	170,1	48,7	107,6	184,0	73,6	11,3	51,1	97,4	185,9	43,8	1.174,3	256,7	1.431,0	102,1
	Q4	158,4	37,3	159,3	38,9	75,8	184,5	45,4	8,7	54,1	112,1	226,0	59,8	1.160,4	194,2	1.354,6	97,4
2014	Q1*	134,8	37,3	100,8	51,8	58,8	123,1	41,3	14,6	53,2	121,7	154,4	37,1	928,8	158,5	1.087,3	101,7
	Q2*	180,5	25,2	140,8	46,2	92,9	156,7	52,2	12,3	56,8	122,6	189,4	61,9	1.137,5	223,5	1.361,0	97,5
	Q3*	169,4	24,0	176,8	33,5	98,3	221,3	69,9	14,5	56,7	123,5	186,9	31,6	1.206,4	279,9	1.486,2	101,4
	Q4*	156,6	32,1	168,3	41,1	81,1	189,0	48,4	12,0	54,5	133,6	218,7	39,5	1.175,0	265,9	1.440,9	103,3
2015	Q1*	131,8	34,1	95,7	44,3	55,6	156,8	42,8	19,1	55,2	129,0	171,3	37,3	973,1	195,2	1.168,3	100,2
	Q2*	173,5	40,3	139,6	53,7	111,8	153,1	61,9	11,7	66,2	145,6	191,9	32,8	1182,3	251,5	1.433,8	103,4

*Estimated

Table 4. Real growth rate by economic activities compared with the corresponding quarter of previous year

Nace Rev.2		Agriculture, forestry and fishing	Mining and quarrying	Manufacturing	Electricity, gas, steam and air conditioning supply; Water supply; sewerage, waste management and remediation activities	Construction	Wholesale and retail trade; repair of motor vehicles and motorcycles	Transportation and storage	Accommodation and food service activities	Financial and insurance activities	Real estate activities	Public administration	Other services	GVA at basic prices	Taxes less subsidies on product	GDP
		A	B	C	D+E	F	G	H	I	K	L	O	J+M+N+P+Q+R+S+T			
2014	Q1*	-0,9	20,6	0,3	3,2	-6,5	-2,3	-15,9	30,2	6,9	0,4	3,0	47,8	1,8	1,2	1,7
	Q2*	-1,1	-13,5	-2,5	-17,1	-11,8	-1,9	-10,1	0,0	5,5	4,1	1,1	-9,0	-3,1	0,9	-2,5
	Q3*	2,2	-7,4	1,3	-31,5	-8,4	15,6	-9,6	0,4	6,0	4,9	1,0	0,6	1,1	2,5	1,4
	Q4*	1,4	-0,9	1,8	-2,3	5,8	6,1	-1,6	0,8	-2,8	12,4	-3,1	-11,3	1,7	10,8	3,3
2015	Q1*	-1,7	-7,6	-0,1	-14,1	-14,1	26,2	-4,3	28,2	2,9	-2,1	-7,9	-17,2	-1,1	7,2	0,22
	Q2*	-3,4	21,1	0,0	11,0	20,6	7,2	21,5	-6,1	9,5	11,2	-8,6	-46,8	1,7	12,2	3,37

*Estimated

Table 5. Quarterly Gross Domestic Product by expenditure approach , at current prices

Period		GDP	Final consumption of expenditure	Final consumption of household & NPISH	Final consumption of Government	Gross capital formation	Net export	(in million Euro)	
								Export of goods and services	Import of goods and services
		1 = 2+5+6	2 = 3+4	3	4	5	6 = 7-8	7	8
2013		5.326,6	5.539,3	4.675,4	863,9	1.470,7	(1.683,4)	924,0	2.607,4
2014*		5.484,9	5.767,0	4.838,2	928,8	1.434,6	(1.716,6)	1.089,0	2.805,6
2013	Q1	1.069,2	1.095,7	923,8	171,9	303,7	(330,2)	176,1	506,3
	Q2	1.395,7	1.435,7	1.228,7	207,0	398,9	(438,9)	230,3	669,2
	Q3	1.466,3	1.502,5	1.297,8	204,7	391,6	(427,8)	312,4	740,2
	Q4	1.395,4	1.505,4	1.225,0	280,4	376,5	(486,5)	205,2	691,7
2014	Q1*	1.165,8	1.218,0	1.011,1	206,9	277,7	(329,9)	190,1	520,0
	Q2*	1.387,1	1.447,3	1.203,5	243,8	403,8	(464,0)	239,0	703,0
	Q3*	1.508,4	1.565,1	1.334,2	230,9	387,8	(444,5)	383,6	828,1
	Q4*	1.423,7	1.536,6	1.289,3	247,3	365,3	(478,2)	276,4	754,5
2015	Q1*	1.182,5	1.248,8	1.040,6	208,2	260,9	(327,1)	217,6	544,7
	Q2*	1.434,7	1.449,4	1.219,5	229,9	465,6	(480,4)	261,8	742,2

*Estimated

Tabela 6. Quarterly Gross Domestic Product by expenditure approach, in constant prices

(in milion Euro)

Period		GDP	Final consumption expenditure	Final consumption of households & NPISH	Final consumption of Government	Gross capital formation	Net export	Export of goods and services	Import of goods and services	In % as against the corresponding period of the previous year
		1 = 2+5+6	2 = 3+4	3	4	5	6 = 7-8	7	8	9
2013		5.232,8	5.437,8	4.568,2	869,6	1.460,2	(1.665,2)	944,7	2.609,9	103,4
2014*		5.375,5	5.619,6	4.737,0	882,5	1.493,2	(1.737,3)	1.078,5	2.815,8	100,9
2013	Q1	1.064,9	1.094,7	923,1	171,6	284,6	(314,4)	178,9	493,3	109,8
	Q2	1.382,4	1.431,8	1.223,0	208,8	391,7	(441,2)	234,0	675,2	106,5
	Q3	1.431,0	1.450,7	1.240,3	210,4	404,8	(424,6)	319,8	744,3	102,1
	Q4	1.354,6	1.460,6	1.181,7	278,8	379,1	(485,0)	212,0	697,0	97,4
2014	Q1*	1.087,3	1.146,8	960,7	186,1	300,8	(360,3)	189,1	549,4	101,7
	Q2*	1.361,0	1.390,7	1.169,0	221,7	418,1	(447,8)	237,7	685,5	97,5
	Q3*	1.486,2	1.546,3	1.335,3	211,0	395,0	(455,0)	377,6	832,7	101,4
	Q4*	1.440,9	1.535,7	1.272,0	263,8	379,3	(474,1)	274,1	748,2	103,3
2015	Q1*	1.168,3	1.226,5	1.037,6	188,9	270,7	(329,0)	218,5	547,5	100,2
	Q2*	1.433,8	1.472,1	1.241,3	230,8	444,9	(483,2)	262,6	745,7	103,4

*Estimated

Table 7. Real growth rate by expenditure approach compared with the corresponding quarter of previous year

Period		GDP	(%)						
			Final consumption of expenditure	Final consumption of household & NPISH	Final consumption of Government	Gross capital formation	Net export	Export of goods and services	Import of goods and services
2014	Q1*	1,7	4,7	4,0	8,3	-1,0	9,1	7,4	8,5
	Q2*	-2,5	-3,1	-4,9	7,1	4,8	2,0	3,2	2,4
	Q3*	1,4	2,9	2,9	3,1	0,9	6,4	20,9	12,5
	Q4*	3,3	2,0	3,8	-5,9	0,7	-2,5	33,6	8,2
2015	Q1*	0,2	0,7	2,6	-8,7	-2,5	-0,3	15,0	5,3
	Q2*	3,4	1,7	3,1	-5,3	10,2	4,1	9,9	6,1

*Estimated

Methodological explanations

1. Coverage

The calculations cover all activities, following the concepts of the European System of Accounts (ESA 2010).

2. Data sources used:

2.1 Statistical data sources

Short term indicators provided by KAS, on:

- Quarterly producer price index (PPI) for mining, manufacturing and electricity, gas and water supply;
- CPI, estimated at 4 digits level of COICOP;
- Monthly agricultural input price index;
- Monthly agricultural output price index;
- Data from Labour Force Survey ;
- Hotel statistics (number of visitors and number of nights spent).

2.2 Administrative data sources

The monthly and quarterly administrative data sources used for the estimation of QGDP are:

- Monthly data of non-financial units, provided by Tax Authority (monthly information concerning the turnover, wages, contribution to the social security, number of employees, stocks, purchases, expenses);
- Monthly revenues and expenditures of government;
- Financial statements of Central Bank, other commercial banks and insurance companies;
- Monthly Balance of Payments, provided by Central Bank of Kosovo.

3. Estimation methods

The quarterly GDP estimation is based on the same principles, definitions, and structure of the annual data.

4. Data presentation

The main aggregates and categories are, as regards the concept and terminology, harmonized with ESA 2010. Data by activities are shown according to the Statistical Classification of Economic Activities in the European Community (NACE Rev 2).

Quarterly GDP data are presented in the following tables at current prices and as volume measures at prices of previous year.

5. Definitions and explanations

Gross domestic product by the production equals value added at basic prices by activities, increased by taxes on products, and reduced by subsidies on products. Gross domestic product thus equals the sum of value added at basic prices of all domestic (resident) production units and net taxes on products (taxes less subsidies on products).

Value added at basic prices equals output at basic prices, reduced by intermediate consumption at purchaser`s prices

Kosovo Agency of Statistics

short description

Kosovo Agency of Statistics is a professional institution which deals with collection, processing and publication of official statistical data. As such acts since 1948 and has passed through several historical stages, structured according to state regulation of those times.

On 2 August 1999, the Agency has resumed his professional work (after nine years of interruption of all statistical series detrimental to the interest of Kosovo), as an independent institution under the Ministry of Public Administration. Since 12.12.2011 the Agency operates in the frames of the Prime Minister's Office. Office is funded by the Kosovo Consolidated Budget, but also by donors for specific projects and for technical professional support.

Kosovo Agency of Statistics acts according to the Law No. 04/L-036 which entered into force on 12.12.2011. Strategic development plan 2009-2013 is the middle term implementation for the development of statistical system in correlation with the European Union statistics (EUROSTAT).

Kosovo Agency of Statistics has this organizational structure: production departments; (Department of Economic statistics and National Accounts, Department of Agriculture and Environment statistics and Department of Social statistics. **Support Departments**; Department of Methodology and Information Technology, Department of Policy Planning, Coordination and Communication, Department of Census and survey and Department of Administration.

In ASK are employed in total 139 workers, of them 104 (74,8 %) at the headquarters of the Agency, while in the Regional Offices, 35 (25,2%), with qualifying structure, 70,5% with university education to 29,5% with secondary education.

We have professional and technical cooperation with all Ministries of the Government of Kosovo, especially with the Ministry of Economy and Finance, Central Bank of Kosovo, with international institutions, EUROSTAT, International Monetary Fund, World Bank, Sweden's SIDA, DFID, UNFPA, UNDP, UNICEF, and with the statistical institutions of the countries in the region.

Kosovo Agency of Statistics almost completely covers the territory of Kosovo, based on the statistical structure of the enumeration areas as the basic unit and sole in the country from which it gets first hand information. All surveys conducted in the field use the extension of the samples in these enumeration areas but also a statistical methodology according to international recommendations. During the collection of statistical data and reports from reporting entities are involved professionals, technicians, administrators, servants of the country offices, field enumerators from regional offices, etc.

We have successfully implemented the project of Population Census, Households and Dwellings in 2011, Census that was not carried out since 1981. Results obtained from the Census will have an important role in compiling the development policies.

The mission of the Agency; to meet the needs of users with qualitative statistical data, objective, in time and space so that users have reliable base to conduct regular analysis in the interest of planning and project development at the municipal and country level. To support government institutions, scientific institutes, research academies, businesses in order to provide proper information for decision-makers and other users in Kosovo.

- **Address: KOSOVO AGENCY OF STATISTICS**
Street. "Zenel Salihu", No. 4, 10000 Pristina
- **Telephone:** +381 (0) 38 200 31 129
CEO: +381 (0) 38 200 31 112
- **Fax::** +381 (0) 38 235 033
- **E-mail:** economic@rks-gov.net
- **Web-faqe:** <http://ask.rks-gov.net/>