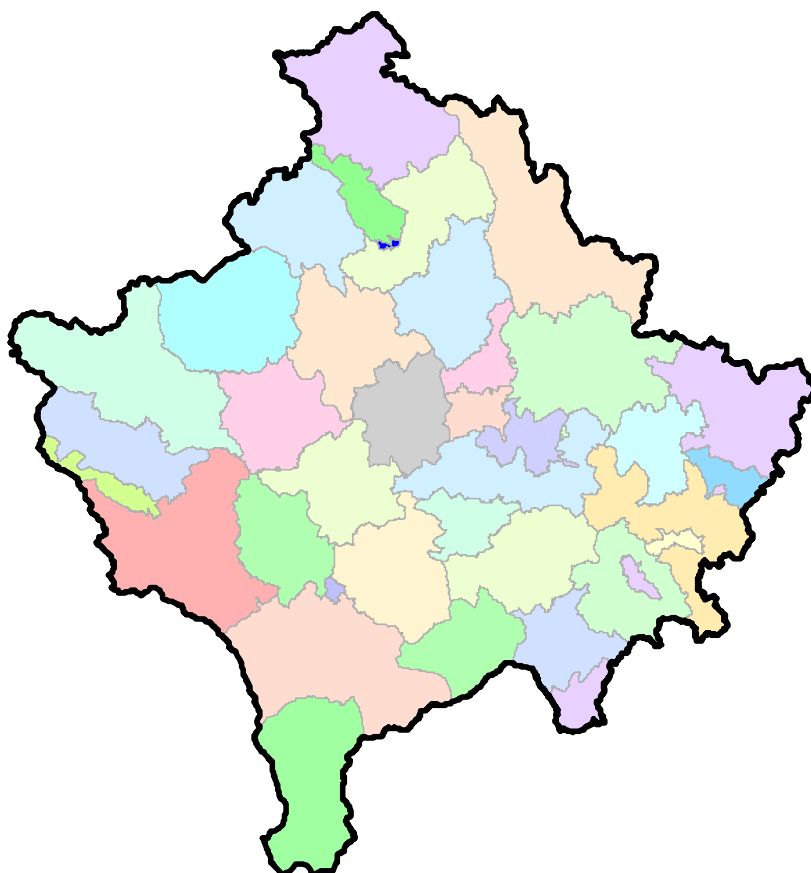




Republika e Kosovës  
Republika Kosova-Republic of Kosovo  
*Qeveria - Vlada - Government*  
Zyra e Kryeministrit –Ured Premijera –Office of the Prime Minister  
*Agjencia e Statistikave të Kosovës - Agencija za Statistike Kosova - Kosovo Agency of Statistics*

## Series 3: Economic Statistics

# Statistical Repertoire of Enterprises in Kosovo (Q1 - 2015)



**ask**

AGJENCIA E STATISTIKAVE TË KOSOVËS  
AGENCIJA ZA STATISTIKE KOSOVA  
KOSOVO AGENCY OF STATISTICS

## Foreword

Kosovo Agency of Statistics (KAS) has prepared publication "Statistical Repertoire of Enterprises in Kosovo Q1 2015", on new registered businesses at the Agency for Registration of Businesses in Kosovo (ARBK), from 01.01.2015 until 03.31.2015 (first quarter 2015).

Statistical Register of Business (SRB) is part of KAS which includes all businesses that conduct economic activity on the territory of the Republic of Kosovo and as such serves for statistical and demographic analysis of businesses, preparation of samples and the establishment of results at the country level for all surveys conducted by businesses. SRB also serves as the main source of information for the calculation of Gross Domestic Product.

SRB is constructed and continuously updated based on two administrative sources of data (ARBK and Tax Administration), as well as from regular statistical surveys carried out by the Agency.

Continued demand for statistical information for businesses come every day from different internal or external users of KAS, so based on these requirements we have prepared various tables and graphical data.

We believe that this publication will serve as a useful reference base for all users of KAS statistical data, and will serve as useful and relevant economic information for Kosovo.

Comments, remarks, suggestions and proposals regarding this publication are welcome and they can be sent to e-mail: [economic@rks-gov.net](mailto:economic@rks-gov.net)

Statistical Repertoire of Enterprises in Kosovo is a regular quarterly publication.

*NOTE: From September 1, 2014, the nomenclature of economic activities is in the new version NACE Rev. 2, and some previously published data are converted in this version.*

Publication was prepared by:

Ilir T. Berisha – Director of Department  
Hysni Elshani - Head of sector,  
Muhamet Kastrati - IT specialist for SBR,  
Luljeta Krasniqi –Senior Official,  
Valdete Navakazi – Senior Official,  
Ahmet Cakolli – Official for Design.

May, 2015

Chief Executive Official, KAS  
Isa Krasniqi

## List of Abbreviations

<b>KAS</b>	Kosovo Agency of Statistics
<b>SRB</b>	Statistical Register of Business
<b>ARBK</b>	Agency for Business Registration in Kosovo
<b>TAK</b>	Tax Administration of Kosovo
<b>MTI</b>	Ministry of Trade and Industry
<b>GDP</b>	Gross Domestic Product (GDP)
<b>KPA</b>	Kosovo Privatization Agency
<b>EC</b>	European Commission
<b>NEA</b>	Nomenclature of Economic Activities
<b>NACE Rev. 1</b>	(Nomenclature of Economic Activities EC - 1st version)
<b>NACE Rev.2</b>	(Nomenclature of Economic Activities EC - 2nd Version)
<b>SME</b>	Small and Medium Enterprises
<b>Q1</b>	First Quarter
<b>Q2</b>	Second Quarter
<b>Q3</b>	Third Quarter
<b>Q4</b>	Fourth Quarter

## SYMBOLS

- No occurrence
- : Missing data

## C o n t e n t

	Page
1 Characteristics of new enterprises Q1 - 2015.....	5
2 Methodological explanations and definitions.....	6
2.1. Definitions.....	7
2.2. Legal form of organization of business .....	8
3 New and terminated enterprises by quarter .....	9
4 Enterprises according to economic section, legal form of organization and the number of employees .....	11
Categorization of enterprises by size and gender .....	12
5 Number of new enterprises according to municipality .....	13
6 New individual and non-individual enterprises.....	15
7 New enterprises according to economic section nad the number of employees .....	17
8 New enterprises according to legal form.....	18
9 New enterprises according to origin of capital.....	19
10 Terminated enterprises .....	20



## **1 Characteristics of new enterprises Q1 - 2015**

During the first quarter of 2015 (Q1 - 2015) a total of 2,582 enterprises were registered, while in the previous quarter (Q4 - 2014) were 2175 of them, which notes an increase compared to the previous quarter to 407 enterprises, expressed in percentages there are 18.7% more new enterprises in this quarter.

Decrease of 11.3% of new businesses was observed compared to the same quarter previous year (Q1 - 2014).

Favorite economic activities during the quarter were trade with 784 new enterprises (30.4%), manufacturing with 276 (10.7%), agriculture, forestry and fishery with 255 (9.9%), accommodation and food service activities with 253 (9.8%), construction with 237 (9.2%), professional activities, scientific and technical with 144 (5.6%), transport and storage with 143 (5.5%), other service activities 133 (5.2%), while other activities participate in smaller scale.

Category of number of employees by 1-4 (employees) compounds about 2507 enterprises or 97.1% of new enterprises, the category with 5-9 with 49 (1.9%), 10-19 in 15 (0.6%), 20-49 in 9 enterprises (0.3%), in the category of 50-249 were only two enterprises, whereas in the other category (250+) there was no enterprise registered in this quarters.

Regarding the geographical scope of new enterprises to the municipal level, as in each quarter, prevails Prishtina with 608 new enterprises (expressed in percentage 23.5%), Prizren with 193 (7.5%), Ferizaj with 190 (7.4%), Peja 158 (6.1%), Mitrovica with 116 (4.5%) and Gjilan with 112 (4.3%), Gjakova with 110 (4.3%), while other municipalities had a smaller number of enterprises registered during the quarter.

## 2 Methodological explanations and definitions

Statistical Register of Business (SRB) serves for statistical purposes and shall clearly identify the units in order:

- To allow receiving information about them via administrative sources.
- To enable the preparation of samples; coordination of surveys and the aggregation/grouping of results;
- To allow analysis of the demographic population of enterprises and units associated with them.
- Provide input data (input) for the calculation of Gross Domestic Product (GDP).

Statistical Register of Business (SRB) - **Includes** all legal entities (enterprises) that exercise economic activity within the territory of Kosovo.

**Does not include:** Public administration, Non-profit Organizations and International Organizations.

### **Sources for updating the SRB variables are:**

- Administrative
  - o Information from the Agency for Registration of Businesses in Kosovo
  - o Information from the Tax Administration of Kosovo
- Statistical
  - o Enterprise Structure Survey
  - o Survey about Hotel Service
  - o Collection of Production Price
  - o Collection of Import Price.

### **Main variables in the SRB are grouped by:**

- **Identification of variables**
  - o Number of business registration (NBR), name, legal form, ownership, addresses, communication (phone, fax, email, etc.)
- **Stratified variables**
  - o Main economic activity, size by employees
- **Demographic variables**
  - o Date of registration, date of shutdown/closure
- **Updated variables are**
  - o Status of activity (active or non-active)
  - o Economic activity of the enterprise (NACE Rev. 1)
  - o Size by employees
  - o Address, and communication variables (telephone, fax, mobile, e-mail)

## 2.1. Definitions

Nomenclature of Economic Activities (NACE), is the four-digit level classification of economic activities exerted in different subjects.

This nomenclature is translation and adaptation of nomenclature of the European Community Economic Activities (NACE Rev. 2. in English).

Use of this nomenclature is mandatory since 1 September 2014 in all the institutions of the Republic of Kosovo and based on the regulation No.11/2013 adopted by the Government of the Republic of Kosovo.

The structure of economic activities NACE Rev. 2 consists of 21 sections presented below labeled with letters from A to S.

- A. Agriculture, forestry and fishing
- B. Mining and quarry
- C. Manufacturing
- D. Supply of electricity, gas, steam and air conditioning
- E. Water supply, sewerage, waste management and land revitalization activities
- F. Construction
- G. Wholesale and retail trade, repair of motor vehicles, motorcycles
- H. Transport and storage
- I. Accommodation and food service activities
- J. Information and communication
- K. Financial and insurance activities
- L. Real estate activities
- M. Professional, scientific and technical activities
- N. Administrative and support activities
- O. Public administration and defense
- P. Education
- Q. Human health and social work activities
- R. Arts, entertainment and recreation
- S. Other services activities
- T. Activities of households as employers
- U. Activities of organizations and extra-territorial bodies

Classes of economic activities according to the new nomenclature NACE Rev. 2 are total of 615 of them, which are encoded by four digit code ranging from 0111 to 9900.



## 2.2. Legal form of organization of business

Definitions applied to legal forms of enterprises under Regulation 2001/16 and Law No. 02/L123 on Trade and Corporation Associations which are applied when registering in the ARBK are as follows:

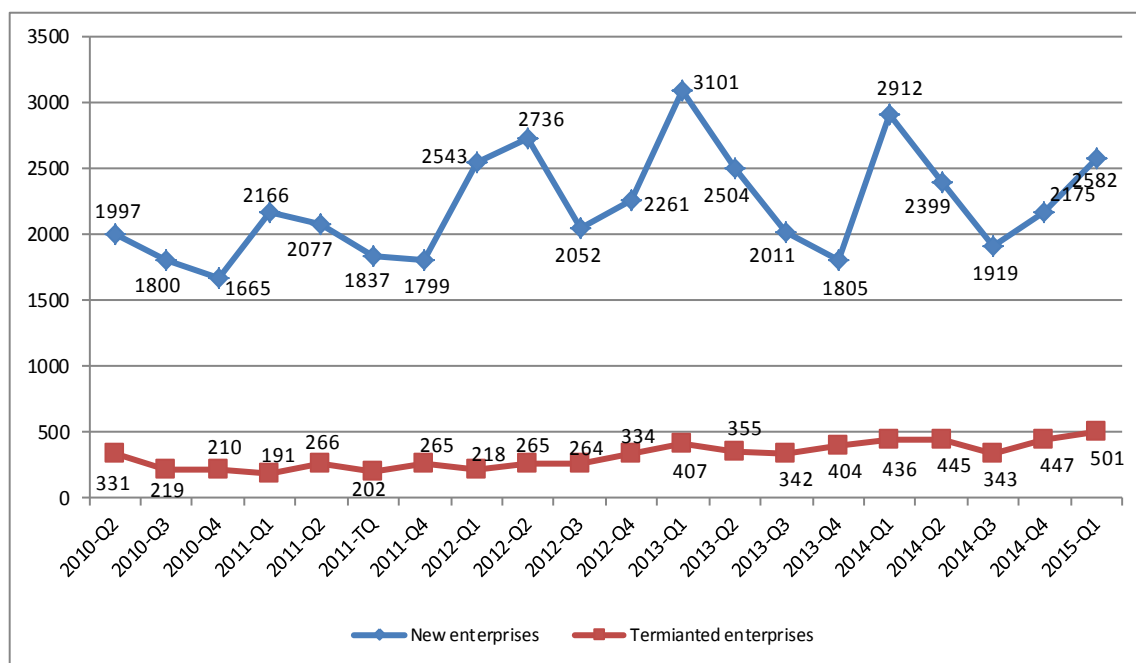
- 1. Individual business** - is the **only natural person** who performs economic activities for the purpose of profit and who is registered in the KBRA. In the individual business the owner has unlimited liability for all debts of the company. The company has an official name or includes the surname of the lawful owner
- 2. General partnership** - The general partnership, all partners jointly respond without restriction for partnership debts. A partnership has a label, which may include the name of one or more partners.
- 3. Limited partnership** - In limited partnerships, except "unlimited" partners (partners responsible jointly without limitation for the debts of the company) also participate "limited" partners or those responsible for the company's obligations to the limit of the value of their founding contributions/capital.
- 4. Limited liability enterprises** - Limited liability enterprises are those enterprises that are established by one or several founders, who answer only to the limit of the value of their contribution. Limited liability enterprise has a label, which may include the name of one or more partners.
- 5. Shareholders** – Shareholders are those whose capital is divided into shares and shareholders respond only to the limit of the value of their contribution. Shareholder enterprise (a joint stock enterprises) can be established by having one or more shareholders.
- 6. Foreign company** - A foreign company is a business and from the moment of registration is considered a branch in Kosovo that has no identity of legal person. After registration shall enjoy all the rights and obligations established under the applicable law.
- 7. Social enterprise** - Social enterprise means a legal person that most assets and capital are socially owned. These enterprises until the privatization are monitored and registered by the Kosovo Privatization Agency under the Law Commercial Companies No.02/L-123.
- 8. Public enterprise** - Public enterprise is the enterprise which carries out activities of general interest which is established by the state. Public enterprise is monitored by the government and organized as a joint stock company in accordance with applicable law on Commercial Companies. All ownership interests in a public company will be represented by shares and these shares will be registered.
- 9. Agricultural cooperative** - Agricultural cooperative is a business organization created by natural or legal persons who must be farmers who contribute with their private property to the share of capital.
- 10. Enterprise under the jurisdiction of the KPA** - are ex-social owned enterprises which are now managed and supervised by the KPA (Kosovo Privatization Agency).

### 3 New and terminated enterprises by quarter

**Table 1. The number of new and re-registered enterprises by quarters and sections of economic activities.**

Periods		Sections of economic activities																													
		Agriculture, forestry and fishing	Mining and quarry			Production	Supply of electricity, gas, steam and air conditioning		Water supply, sewerage, waste management and land revitalization activities		Construction	Wholesale and retail trade, repair of motor vehicles, motorcycles		Transport and storage	"Accommodation and service activities with food "	Information and communication		Financial and insurance activities		Real estate activities		Professional, scientific and technical activities		Administrative and support activities		Public administration and defense, compulsory social insurance		Education	Human health and social work activities		Arts, entertainment and recreation
Quarters	Total	A	B	C	D	E	F	G	H	I	J	K	L	M	N	O	P	Q	R	S											
2012 - Q1	2528	174	9	239	5	18	268	820	175	243	96	4	9	155	57	7	32	39	48	130											
2012 - Q2	2736	218	26	278	3	17	259	809	156	300	82	3	10	190	70	6	24	36	36	213											
2012 - Q3	2051	127	9	184	7	12	193	598	140	205	84	6	11	131	48	8	32	34	56	166											
2012 - Q4	2261	222	11	201	5	12	224	691	139	207	78	3	7	137	78	4	26	20	54	142											
2012 Total	9576	741	55	902	20	59	944	2918	610	955	340	16	37	613	253	25	114	129	194	651											
2013 - Q1	3100	301	10	299	9	19	337	867	201	264	104	6	135	169	60	9	32	48	54	176											
2013 - Q2	2504	142	7	258	2	14	227	759	107	246	101	4	95	162	65	9	28	43	52	183											
2013 - Q3	2011	122	7	163	6	11	201	565	108	240	82	8	15	119	53	6	20	48	63	174											
2013 - Q4	1805	188	5	152	5	6	178	543	109	161	70	2	12	135	36	9	18	34	62	80											
2013 Total	9420	753	29	872	22	50	943	2734	525	911	357	20	257	585	214	33	98	173	231	613											
2014 - Q1	2911	205	10	283	4	13	284	887	181	293	121	12	21	180	77	12	33	50	88	157											
2014 - Q2	2399	186	9	283	3	16	207	704	99	282	95	8	10	146	61	11	20	39	55	165											
2014 - Q3	1919	115	7	196	3	13	146	574	111	237	61	11	7	97	49	2	18	33	60	179											
2014 - Q4	2175	168	6	216	14	9	166	649	143	222	80	12	21	147	65	17	19	51	50	120											
2014 Total	9404	674	32	978	24	51	803	2814	534	1034	357	43	59	570	252	42	90	173	253	621											
2015 - Q1	2582	255	7	276	8	12	237	784	143	253	104	12	15	144	80	6	20	36	57	133											

**Graph 1. The number of new enterprises and terminated by the respective quarters from Q2 2010 to Q1 2015**

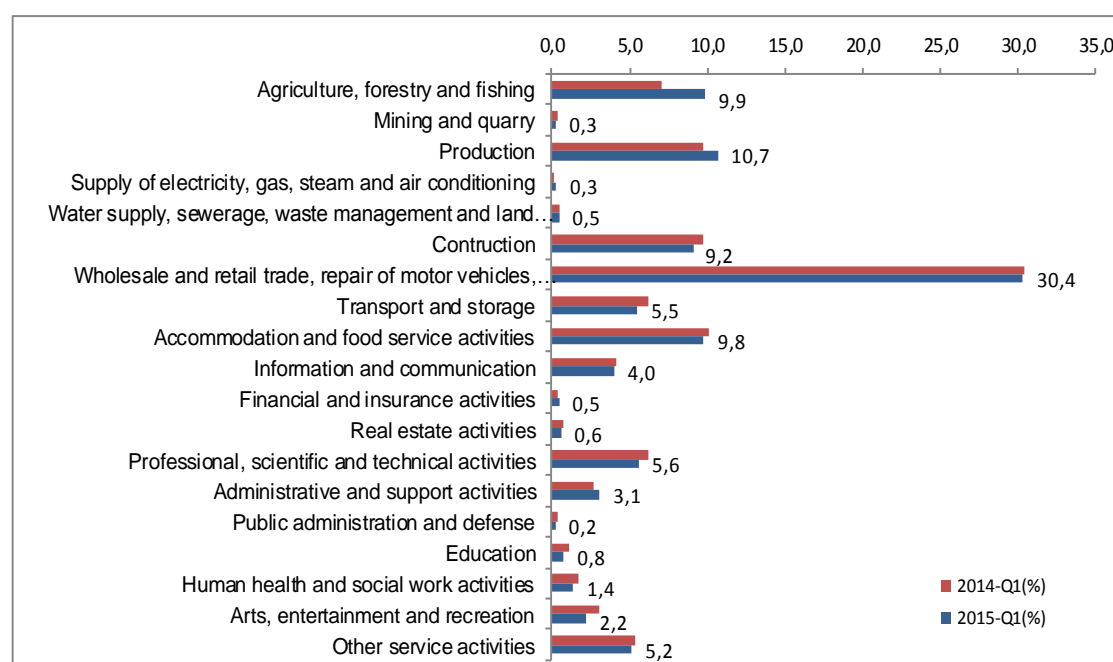


## 4 Enterprises according to economic section, legal form of organization and the number of employees

**Table 2. Number of new enterprises by section of economic activity, legal form of organization and the number of employees in Q1 2015**

Sections of economic activities	Total	Category of number of employees					
		Non-individual			Individual		
		Total	1-4	5 +	Total	1-4	5 +
<b>Total</b>	<b>2582</b>	<b>640</b>	<b>589</b>	<b>51</b>	<b>1942</b>	<b>1918</b>	<b>24</b>
A Agriculture, forestry and fishing	255	30	23	7	225	222	3
B Mining and quarry	7	6	4	2	1	1	-
C Production	276	79	70	9	197	191	6
D Supply of electricity, gas, steam and air conditioning	8	8	7	1	-	-	-
E Water supply, sewerage, waste management and land revitalization activities	12	4	4	-	8	8	-
F Construction	237	82	72	10	155	148	7
G Wholesale and retail trade, repair of motor vehicles, motorcycles	784	178	174	4	606	605	1
H Transport and storage	143	16	15	1	127	126	1
I Accommodation and food service activities	253	37	33	4	216	212	4
J Information and communication	104	50	46	4	54	53	1
K Financial and insurance activities	12	5	5	-	7	7	-
L Real estate activities	15	10	9	1	5	5	-
M Professional, scientific and technical activities	144	70	69	1	74	74	-
N Administrative and support activities	80	29	27	2	51	50	1
O Public administration and defense	6	6	3	3	-	-	-
P Education	20	7	6	1	13	13	-
Q Human health and social work activities	36	9	9	-	27	27	-
R Arts, entertainment and recreation	57	8	7	1	49	49	-
S Other service activities	133	6	6	-	127	127	-

**Graph 2. New enterprises according to economic section in Q1 2015**

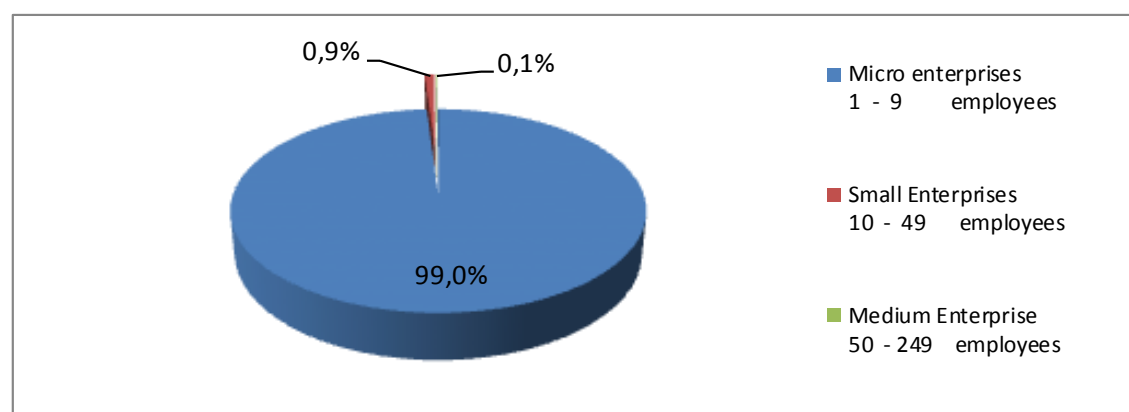


## Categorization of enterprises by size and gender

**Table 3. Number of SME in Q1 2015**

Classification	Number of employees	businesses	%
Micro enterprises	1 - 9 employees	2556	99,0
Small Enterprises	10 - 49 employees	24	0,9
Medium Enterprise	50 - 249 employees	2	0,1
Large enterprises	250 and above employees	-	-
<b>Gjithsej</b>		<b>2582</b>	<b>100,0</b>

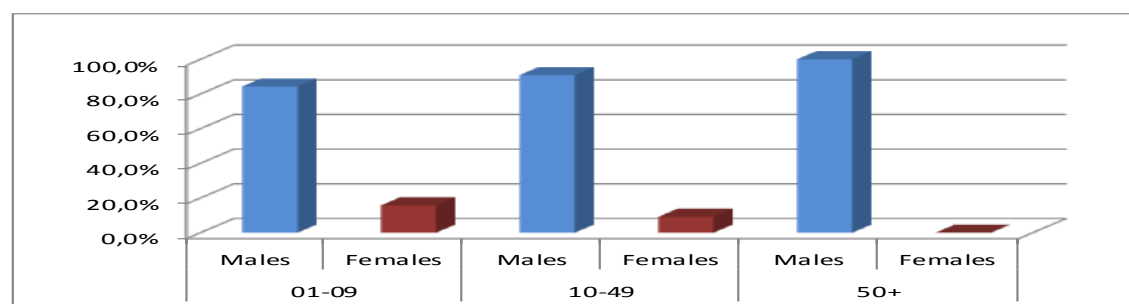
**Graph 3. Structure of enterprises by size for Q1 2015**



**Table 4. Structure of enterprises by gender of the owners Q4 2014**

Structure of enterprises according to gender							
Total		01-09		10-49		50+	
Males	Females	Males	Females	Males	Females	Males	Females
84,4%	15,6%	84,3%	15,7%	90,9%	9,1%	100,0%	0,0%

**Graph 4. Graphic presentation of the gender of the owners enterprises for Q4 2014**

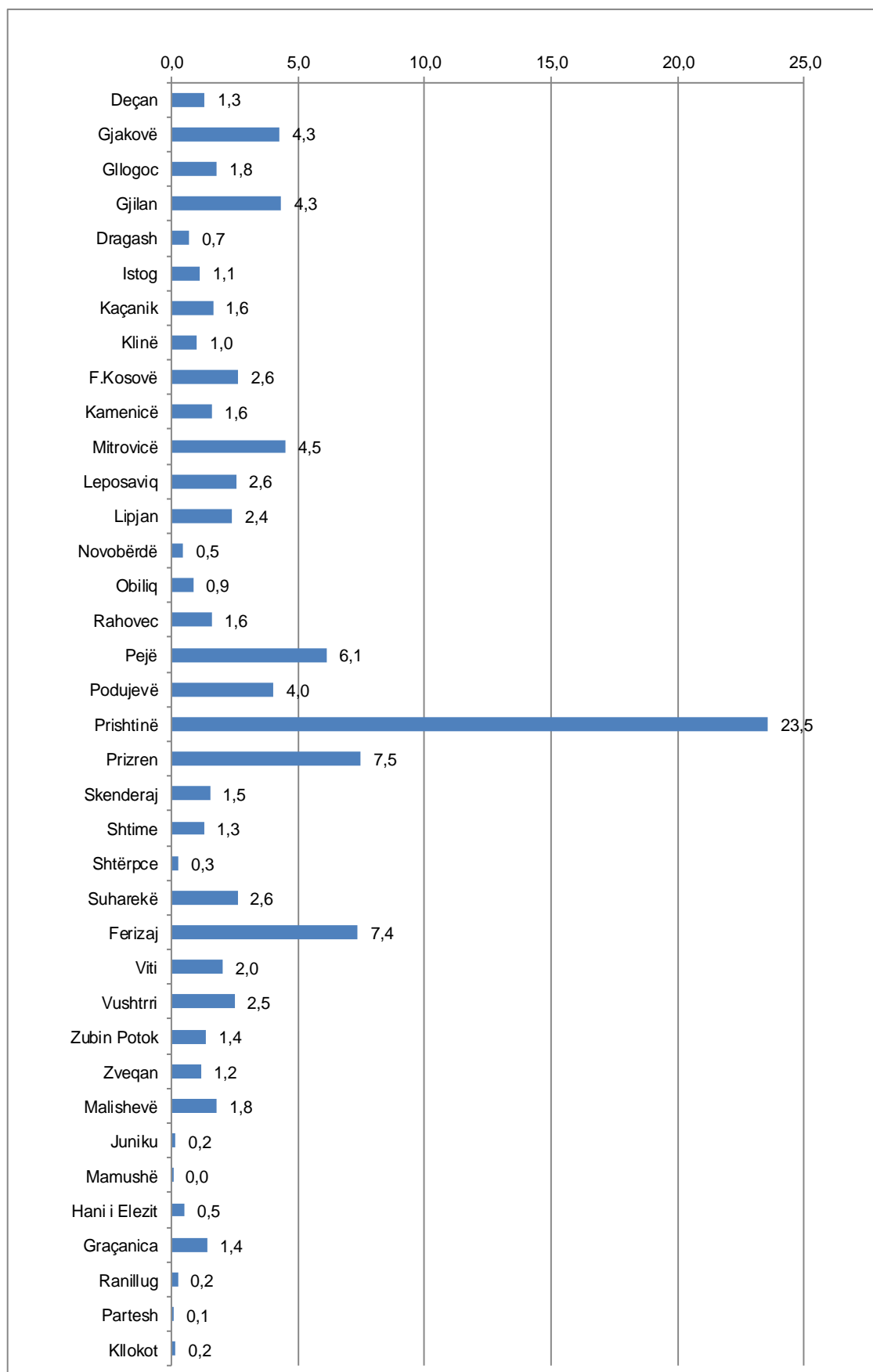


**Note:** The data in Table 4 and Graph 4 are from the previous quarter (Q4 - 2014)

## 5 Number of new enterprises according to municipality

**Table 5. Number of new enterprises by municipality and section of economic activity in Q1 2015**

Municipalities		Sections of economic activities																															
		Agriculture, forestry and fishing	Mining and quarry			Production	Supply of electricity, gas, steam and air conditioning		Water supply, sewerage, waste management and land revitalization activities		Construction	Wholesale and retail trade, repair of motor vehicles, motorcycles		Transport and storage		"Accommodation and service activities with food "		Information and communication		Financial and insurance activities		Real estate activities		Professional, scientific and technical activities		Administrative and support activities		Public administration and defense, compulsory social insurance		Education	Human health and social work activities		Arts, entertainment and recreation
Code and name	Total	A	B	C	D	E	F	G	H	I	J	K	L	M	N	O	P	Q	R	S													
	2582	255	7	276	8	12	237	784	143	253	##	12	15	144	80	6	20	36	57	133													
01 Deçan	34	9	-	2	1	-	3	9	2	4	-	-	-	-	-	-	-	1	1	2													
02 Gjakovë	110	2	1	12	-	-	11	36	1	13	4	1	1	3	4	-	-	3	5	13													
03 Glogoc	46	6	-	5	-	-	4	19	2	3	-	-	1	2	-	-	-	-	2	2													
04 Gjiilan	112	6	1	9	-	-	17	32	15	9	2	1	-	5	4	1	1	1	3	5													
05 Dragash	18	3	-	3	-	-	3	5	-	4	-	-	-	-	-	-	-	-	-	-													
06 Istog	29	2	-	4	-	-	9	6	2	2	-	-	-	1	1	-	-	-	1	1													
07 Kaçanik	42	5	-	3	-	-	2	17	4	3	1	-	-	-	-	-	-	1	3	3													
08 Klinë	26	4	-	6	-	-	3	7	1	3	-	-	-	-	-	-	-	-	1	1													
09 F.Kosovë	68	5	-	5	1	-	8	19	17	5	1	-	2	2	2	1	-	-	-	-													
10 Kamenicë	41	8	-	10	-	1	7	8	3	3	-	-	-	-	-	-	-	-	1	-													
11 Mitrovicë	116	11	-	8	-	1	14	28	9	14	9	-	-	8	7	-	1	1	-	5													
12 Leposaviq	66	46	1	5	-	-	2	9	3	-	-	-	-	-	-	-	-	-	-	-													
13 Lipjan	62	2	1	4	-	1	8	20	2	6	5	-	-	4	3	-	-	-	3	3													
14 Novobërdë	12	5	-	1	-	-	2	2	1	1	-	-	-	-	-	-	-	-	-	-													
15 Obiliq	22	4	1	3	-	-	2	3	3	3	-	-	-	-	-	-	-	-	1	2													
16 Rahovec	41	3	-	5	-	-	5	8	1	7	1	-	-	2	-	-	2	-	2	5													
17 Pejë	158	6	-	19	-	1	14	51	9	21	2	-	1	5	6	-	1	6	4	12													
18 Podujevë	104	14	-	12	-	1	7	40	6	4	3	1	-	2	-	-	1	3	2	8													
19 Prishtinë	608	14	1	52	2	1	39	188	9	68	58	5	8	74	28	3	8	9	12	29													
20 Prizren	193	7	-	33	3	-	15	57	12	21	3	-	-	11	7	-	-	3	4	17													
21 Skenderaj	39	5	-	5	-	1	7	11	2	3	2	-	-	-	-	-	-	1	-	2													
22 Shtime	33	3	-	2	-	-	5	9	7	4	-	-	-	1	-	-	1	-	1	-													
23 Shtërpce	7	1	-	-	-	-	1	3	-	1	-	1	-	-	-	-	-	-	-	-													
24 Suharekë	67	4	-	6	-	-	10	26	6	2	2	2	-	3	1	-	-	2	1	2													
25 Ferizaj	190	10	-	22	1	3	10	61	8	28	6	-	1	10	7	1	4	2	2	14													
26 Viti	52	8	-	7	-	-	6	16	2	4	1	-	-	4	2	-	-	2	-	-													
27 Vushtrri	64	3	-	6	-	1	6	27	7	4	2	1	-	3	1	-	1	1	1	-													
28 Zubin Potok	35	24	1	2	-	-	3	2	1	1	-	-	-	-	-	-	-	-	-	1													
29 Zveçan	30	13	-	5	-	-	4	5	-	-	1	-	-	-	2	-	-	-	-	-													
30 Malishevë	46	5	-	7	-	1	8	17	3	-	-	-	-	-	1	-	-	-	1	3													
31 Juniku	4	2	-	-	-	-	-	1	-	1	-	-	-	-	-	-	-	-	-	-													
32 Mamushë	1	-	-	-	-	-	-	1	-	-	-	-	-	-	-	-	-	-	-	-													
33 Hani i Elezit	13	2	-	-	-	-	-	5	2	3	1	-	-	-	-	-	-	-	-	-													
34 Graçanica	36	2	-	5	-	-	2	16	1	5	-	-	-	-	2	-	-	-	2	1													
35 Ranillug	6	-	-	2	-	-	-	1	1	1	-	-	-	-	1	-	-	-	-	-													
36 Partesh	2	1	-	1	-	-	-	-	-	-	-	-	-	-	-	-	-	-	-	-													
37 Kllokot	4	3	-	-	-	-	-	-	-	-	-	-	-	-	-	-	-	-	1	-													
38 North. Mitrovica	45	7	-	5	-	-	-	19	1	2	-	-	1	4	1	-	-	-	3	2													

**Graph 5. Structure of new enterprises by municipality in Q1 2015**

## 6 New individual and non-individual enterprises

**Table 6. The number of new individual enterprises by municipality and section of economic activity in Q1 2015**

Municipalities		Sections of economic activities																			
		Agriculture, forestry and fishing	Mining and quarry	Production	Supply of electricity, gas, steam and air conditioning	Water supply, sewerage, waste management and land revitalization activities	Construction	Wholesale and retail trade, repair of motor vehicles, motorcycles	Transport and storage	"Accommodation and service activities with food "	Information and communication	Financial and insurance activities	Real estate activities	Professional, scientific and technical activities	Administrative and support activities	Public administration and defense, compulsory social insurance	Education	Human health and social work activities	Arts, entertainment and recreation	Other service activities	
		A	B	C	D	E	F	G	H	I	J	K	L	M	N	O	P	Q	R	S	
Code and name	Total	1942	225	1	197	-	8	155	606	127	216	54	7	5	74	51	-	13	27	49	127
01 Deçan	30	8	-	2	-	-	3	8	2	3	-	-	-	-	-	-	-	-	1	1	2
02 Gjakovë	92	2	-	9	-	-	8	32	1	12	4	1	-	2	2	-	-	2	5	12	
03 Glogoc	42	5	-	3	-	-	4	19	2	3	-	-	1	1	-	-	-	-	2	2	
04 Gjilan	95	6	-	5	-	-	14	26	15	9	2	1	-	5	3	-	1	-	3	5	
05 Dragash	18	3	-	3	-	-	3	5	-	4	-	-	-	-	-	-	-	-	-	-	
06 Istog	25	2	-	4	-	-	7	5	2	2	-	-	-	-	1	-	-	-	1	1	
07 Kaçanik	37	2	-	3	-	-	2	16	4	3	1	-	-	-	-	-	-	1	2	3	
08 Klinë	24	3	-	5	-	-	3	7	1	3	-	-	-	-	-	-	-	-	1	1	
09 F.Kosovë	45	4	-	1	-	-	4	11	17	5	1	-	-	-	2	-	-	-	-	-	
10 Kamenicë	37	6	-	9	-	1	6	8	3	3	-	-	-	-	-	-	-	-	1	-	
11 Mitrovicë	94	9	-	7	-	1	11	24	8	13	5	-	-	5	5	-	1	-	-	5	
12 Leposaviq	60	45	-	5	-	-	1	6	3	-	-	-	-	-	-	-	-	-	-	-	
13 Lipjan	52	2	-	3	-	1	6	18	2	6	3	-	-	3	2	-	-	-	3	3	
14 Novobërdë	12	5	-	1	-	-	2	2	1	1	-	-	-	-	-	-	-	-	-	-	
15 Obiliq	16	3	-	3	-	-	-	2	2	3	-	-	-	-	-	-	-	-	1	2	
16 Rahovec	35	3	-	4	-	-	3	8	-	7	1	-	-	1	-	-	1	-	2	5	
17 Pejë	124	4	-	12	-	1	9	41	8	19	2	-	1	4	4	-	1	5	2	11	
18 Podujevë	90	12	-	10	-	1	4	36	6	3	3	1	-	2	-	-	-	3	1	8	
19 Prishtinë	309	12	-	27	-	1	8	108	2	45	21	2	1	26	12	-	4	4	10	26	
20 Prizren	156	7	-	26	-	-	8	46	11	19	1	-	-	9	5	-	-	3	4	17	
21 Skenderaj	35	5	-	5	-	-	5	11	2	3	1	-	-	-	-	-	-	1	-	2	
22 Shtime	32	3	-	1	-	-	5	9	7	4	-	-	-	1	-	-	1	-	1	-	
23 Shtërpce	6	1	-	-	-	-	1	2	-	1	-	1	-	-	-	-	-	-	-	-	
24 Suharekë	56	2	-	4	-	-	8	23	5	2	2	1	-	3	1	-	-	2	1	2	
25 Ferizaj	136	6	-	15	-	1	5	47	6	24	3	-	1	3	6	-	3	2	1	13	
26 Viti	43	8	-	4	-	-	5	11	2	4	1	-	-	4	2	-	-	2	-	-	
27 Vushtrri	58	3	-	3	-	-	6	27	7	4	2	-	-	2	1	-	1	1	1	-	
28 Zubin Potok	35	24	1	2	-	-	3	2	1	1	-	-	-	-	-	-	-	-	-	1	
29 Zveqan	27	13	-	5	-	-	3	4	-	-	-	-	-	-	2	-	-	-	-	-	
30 Malishevë	39	4	-	6	-	1	7	13	3	-	-	-	-	-	1	-	-	-	1	3	
31 Juniku	2	-	-	-	-	-	-	1	-	1	-	-	-	-	-	-	-	-	-	-	
32 Mamushë	1	-	-	-	-	-	-	1	-	-	-	-	-	-	-	-	-	-	-	-	
33 Hani i Elezit	11	2	-	-	-	-	-	4	1	3	1	-	-	-	-	-	-	-	-	-	
34 Graçanicë	21	1	-	2	-	-	1	9	1	4	-	-	-	-	1	-	-	-	1	1	
35 Ranillug	5	-	-	2	-	-	-	1	1	1	-	-	-	-	-	-	-	-	-	-	
36 Partesh	2	1	-	1	-	-	-	-	-	-	-	-	-	-	-	-	-	-	-	-	
37 Klokot	3	2	-	-	-	-	-	-	-	-	-	-	-	-	-	-	-	-	1	-	
38 North. Mitrovica	37	7	-	5	-	-	-	13	1	1	-	-	1	3	1	-	-	-	3	2	



**Table 7. The number of new non-individual enterprises by municipality and section of economic activity in Q1 2015**

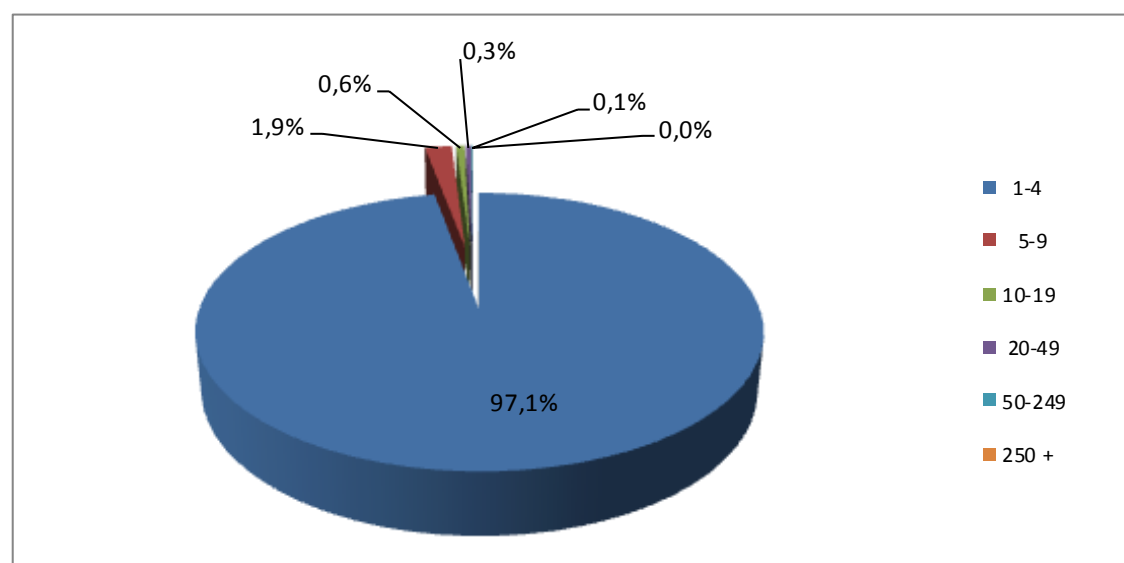
Municipalities		Sections of economic activities																			
		Agriculture, forestry and fishing	Mining and quarry	Production	Supply of electricity, gas, steam and air conditioning	Water supply, sewerage, waste management and land revitalization activities	Construction	Wholesale and retail trade, repair of motor vehicles, motorcycles	Transport and storage	"Accommodation and service activities with food "	Information and communication	Financial and insurance activities	Real estate activities	Professional, scientific and technical activities	Administrative and support activities	Public administration and defense, compulsory social insurance	Education	Human health and social work activities	Arts, entertainment and recreation	Other service activities	
		A	B	C	D	E	F	G	H	I	J	K	L	M	N	O	P	Q	R	S	
Code and name	Total	640	30	6	79	8	4	82	178	16	37	50	5	10	70	29	6	7	9	8	6
01 Deçan	4	1	-	-	1	-	-	1	-	1	-	-	-	-	-	-	-	-	-	-	
02 Gjakovë	18	-	1	3	-	-	3	4	-	1	-	-	1	1	2	-	-	1	-	1	
03 Glllogoc	4	1	-	2	-	-	-	-	-	-	-	-	-	1	-	-	-	-	-	-	
04 Gjiilan	17	-	1	4	-	-	3	6	-	-	-	-	-	-	1	1	-	1	-	-	
05 Dragash	-	-	-	-	-	-	-	-	-	-	-	-	-	-	-	-	-	-	-	-	
06 Istog	4	-	-	-	-	-	2	1	-	-	-	-	-	1	-	-	-	-	-	-	
07 Kaçanik	5	3	-	-	-	-	-	1	-	-	-	-	-	-	-	-	-	-	1	-	
08 Klinë	2	1	-	1	-	-	-	-	-	-	-	-	-	-	-	-	-	-	-	-	
09 F.Kosovë	23	1	-	4	1	-	4	8	-	-	-	-	2	2	-	1	-	-	-	-	
10 Kamenicë	4	2	-	1	-	-	1	-	-	-	-	-	-	-	-	-	-	-	-	-	
11 Mitrovicë	22	2	-	1	-	-	3	4	1	1	4	-	-	3	2	-	-	1	-	-	
12 Leposaviq	6	1	1	-	-	-	1	3	-	-	-	-	-	-	-	-	-	-	-	-	
13 Lipjan	10	-	1	1	-	-	2	2	-	-	2	-	-	1	1	-	-	-	-	-	
14 Novobërdë	-	-	-	-	-	-	-	-	-	-	-	-	-	-	-	-	-	-	-	-	
15 Obiliq	6	1	1	-	-	-	2	1	1	-	-	-	-	-	-	-	-	-	-	-	
16 Rahovec	6	-	-	1	-	-	2	-	1	-	-	-	-	1	-	-	1	-	-	-	
17 Pejë	34	2	-	7	-	-	5	10	1	2	-	-	-	1	2	-	-	1	2	1	
18 Podujevë	14	2	-	2	-	-	3	4	-	1	-	-	-	-	-	-	1	-	1	-	
19 Prishtinë	299	2	1	25	2	-	31	80	7	23	37	3	7	48	16	3	4	5	2	3	
20 Prizren	37	-	-	7	3	-	7	11	1	2	2	-	-	2	2	-	-	-	-	-	
21 Skenderaj	4	-	-	-	-	1	2	-	-	-	1	-	-	-	-	-	-	-	-	-	
22 Shtime	1	-	-	1	-	-	-	-	-	-	-	-	-	-	-	-	-	-	-	-	
23 Shtërpce	1	-	-	-	-	-	-	1	-	-	-	-	-	-	-	-	-	-	-	-	
24 Suharekë	11	2	-	2	-	-	2	3	1	-	-	1	-	-	-	-	-	-	-	-	
25 Ferizaj	54	4	-	7	1	2	5	14	2	4	3	-	-	7	1	1	1	-	1	1	
26 Viti	9	-	-	3	-	-	1	5	-	-	-	-	-	-	-	-	-	-	-	-	
27 Vushtrri	6	-	-	3	-	1	-	-	-	-	-	1	-	1	-	-	-	-	-	-	
28 Zubin Potok	-	-	-	-	-	-	-	-	-	-	-	-	-	-	-	-	-	-	-	-	
29 Zveqan	3	-	-	-	-	-	1	1	-	-	1	-	-	-	-	-	-	-	-	-	
30 Malishevë	7	1	-	1	-	-	1	4	-	-	-	-	-	-	-	-	-	-	-	-	
31 Juniku	2	2	-	-	-	-	-	-	-	-	-	-	-	-	-	-	-	-	-	-	
32 Mamushë	-	-	-	-	-	-	-	-	-	-	-	-	-	-	-	-	-	-	-	-	
33 Hani i Elezit	2	-	-	-	-	-	-	1	1	-	-	-	-	-	-	-	-	-	-	-	
34 Graçanicë	15	1	-	3	-	-	1	7	-	1	-	-	-	-	1	-	-	-	1	-	
35 Ranillug	1	-	-	-	-	-	-	-	-	-	-	-	-	-	1	-	-	-	-	-	
36 Partesh	-	-	-	-	-	-	-	-	-	-	-	-	-	-	-	-	-	-	-	-	
37 Klokot	1	1	-	-	-	-	-	-	-	-	-	-	-	-	-	-	-	-	-	-	
38 North. Mitrovica	8	-	-	-	-	-	-	6	-	1	-	-	-	1	-	-	-	-	-	-	

## 7 New enterprises according to economic section nad the number of employees

**Table 8. Number of new enterprises by section of economic activity and the number of employees in Q1 2015**

Sections of economic activities	Total	Category of number of employees					
		1-4	5-9	10-19	20-49	50-249	250 +
<b>Total</b>	<b>2582</b>	<b>2507</b>	<b>49</b>	<b>15</b>	<b>9</b>	<b>2</b>	<b>-</b>
<i>A</i> Agriculture, forestry and fishing	255	245	7	2	1	-	-
<i>B</i> Mining and quarry	7	5	1	-	1	-	-
<i>C</i> Production	276	261	10	3	2	-	-
<i>D</i> Supply of electricity, gas, steam and air conditioning	8	7	1	-	-	-	-
<i>E</i> Water supply, sewerage, waste management and land revitalization activities	12	12	-	-	-	-	-
<i>F</i> Contruction	237	220	10	2	4	1	-
<i>G</i> Wholesale and retail trade, repair of motor vehicles, motorcycles	784	779	3	2	-	-	-
<i>H</i> Transport and storage	143	141	1	-	-	1	-
<i>I</i> Accommodation and food service activities	253	245	7	1	-	-	-
<i>J</i> Information and communication	104	99	2	2	1	-	-
<i>K</i> Financial and insurance activities	12	12	-	-	-	-	-
<i>L</i> Real estate activities	15	14	1	-	-	-	-
<i>M</i> Professional, scientific and technical activities	144	143	-	1	-	-	-
<i>N</i> Administrative and support activities	80	77	2	1	-	-	-
<i>O</i> Public administration and defense	6	3	2	1	-	-	-
<i>P</i> Education	20	19	1	-	-	-	-
<i>Q</i> Human health and social work activities	36	36	-	-	-	-	-
<i>R</i> Arts, entertainment and recreation	57	56	1	-	-	-	-
<i>S</i> Other service activities	133	133	-	-	-	-	-

**Graph 6. Structure of new enterprises by category of number of employees in Q1 2015**

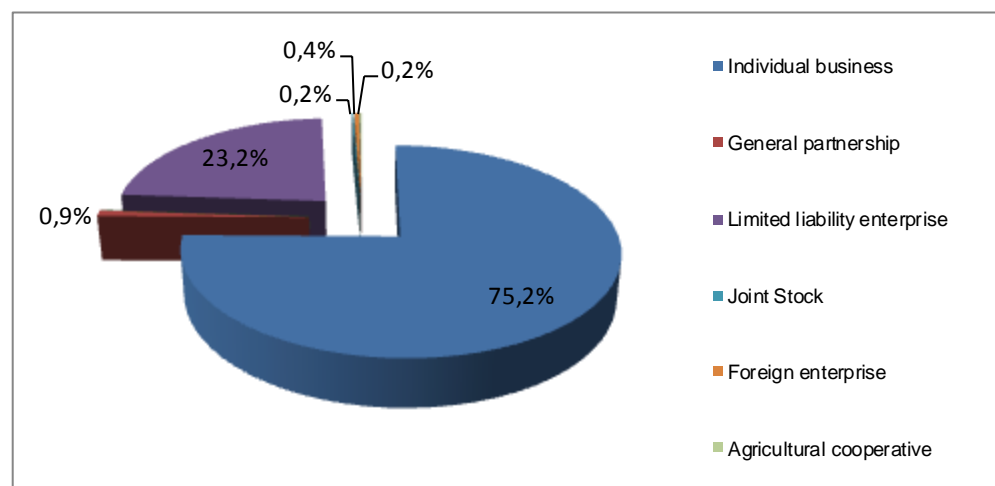


## 8 New enterprises according to legal form

**Table 9. Number of new enterprises by section of economic activity and legal form of organization in Q1 2015**

Sections of economic activities	Legal form of organization									
	Total	Individual business	General partnership	Limited partnership	enterprise	Joint Stock	Foreign enterprise	Social enterprise	Public enterprises	Agricultural cooperative under the jurisdiction of
<b>Total</b>	<b>2582</b>	<b>1942</b>	<b>23</b>	<b>-</b>	<b>598</b>	<b>4</b>	<b>10</b>	<b>-</b>	<b>-</b>	<b>5</b>
A Agriculture, forestry and fishing	255	225	-	-	25	-	-	-	-	5
B Mining and quarry	7	1	-	-	6	-	-	-	-	-
C Production	276	197	1	-	76	1	1	-	-	-
D Supply of electricity, gas, steam and air conditioning	8	-	-	-	8	-	-	-	-	-
E Water supply, sewerage, waste management and land revitalization activities	12	8	-	-	4	-	-	-	-	-
F Contruction	237	155	2	-	77	-	3	-	-	-
G Wholesale and retail trade, repair of motor vehicles, motorcycles	784	606	7	-	166	1	4	-	-	-
H Transport and storage	143	127	1	-	14	1	-	-	-	-
I Accommodation and food service activities	253	216	1	-	36	-	-	-	-	-
J Information and communication	104	54	1	-	49	-	-	-	-	-
K Financial and insurance activities	12	7	-	-	5	-	-	-	-	-
L Real estate activities	15	5	1	-	9	-	-	-	-	-
M Professional, scientific and technical activities	144	74	3	-	65	-	2	-	-	-
N Administrative and support activities	80	51	1	-	27	1	-	-	-	-
O Public administration and defense	6	-	-	-	6	-	-	-	-	-
P Education	20	13	1	-	6	-	-	-	-	-
Q Human health and social work activities	36	27	1	-	8	-	-	-	-	-
R Arts, entertainment and recreation	57	49	1	-	7	-	-	-	-	-
S Other service activities	133	127	2	-	4	-	-	-	-	-

**Graph 7. New enterprises by legal form of organization in Q1 2015**

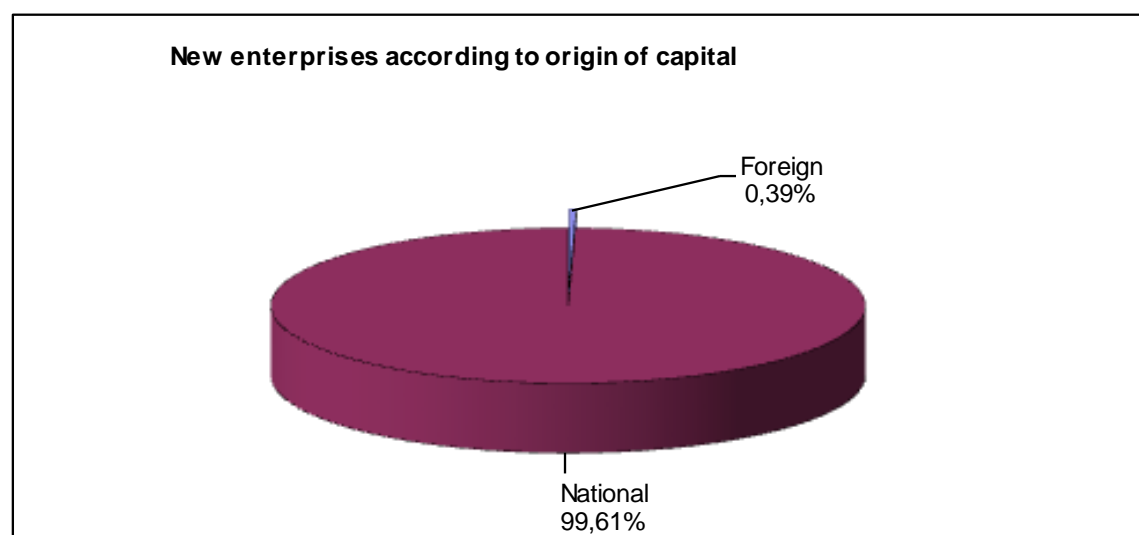


## 9 New enterprises according to origin of capital

**Table 10. Number of new enterprises according to origin of capital and the number of employees in Q1 2015**

Category of number of employees	Origin of capital					
	Total		Foreign		National	
	2582	100%	10	100,0%	2572	100%
1-4	2507	97,1%	10	100,0%	2497	97,1%
5-9	49	1,9%	-	-	49	1,9%
10-19	15	0,6%	-	-	15	0,6%
20-49	9	0,3%	-	-	9	0,3%
50-99	1	-	-	-	1	0,0%
100-499	1	-	-	-	1	0,0%
>= 500	-	-	-	-	-	-

**Graph 8. Structure of new enterprises according to origin of capital**



## 10 Terminated enterprises

**Table 11. Number of terminated enterprises by municipality and section of economic activity in Q1 2015**

Municipalities	Total	Sections of economic activities																
		A	B	C	D	E	F	G	H	I	J	K	L	M	N	O	P	Q
Code and name		A	B	C	D	E	F	G	H	I	J	K	L	M	N	O	P	Q
	501	32	3	38	-	3	42	182	58	49	9	-	2	18	4	7	13	5
01 Deçan	1	1	-	-	-	-	-	-	-	-	-	-	-	-	-	-	-	-
02 Gjakovë	38	6	1	2	-	-	-	19	2	2	1	-	-	2	-	-	-	1
03 Glogoc	14	-	-	2	-	-	4	2	3	1	-	-	-	1	1	-	-	-
04 Gjiilan	38	3	-	1	-	-	4	17	3	-	-	-	-	3	-	1	3	-
05 Dragash	11	-	-	1	-	-	1	6	1	2	-	-	-	-	-	-	-	-
06 Istog	5	-	-	-	-	-	-	3	-	1	-	-	-	1	-	-	-	-
07 Kaçanik	12	-	-	3	-	-	2	1	1	3	2	-	-	-	-	-	-	-
08 Klinë	4	1	-	-	-	-	1	1	-	1	-	-	-	-	-	-	-	-
09 F.Kosovë	9	-	-	1	-	-	-	2	3	-	-	-	-	1	-	1	-	1
10 Kamenicë	9	1	-	-	-	-	-	5	-	1	-	-	-	1	-	-	-	1
11 Mitrovicë	26	2	-	-	-	1	1	8	7	3	2	-	-	-	-	-	-	2
12 Leposaviq	3	1	-	1	-	-	-	1	-	-	-	-	-	-	-	-	-	-
13 Lipjan	4	-	-	-	-	-	2	1	-	1	-	-	-	-	-	-	-	-
14 Novobërdë	0	-	-	-	-	-	-	-	-	-	-	-	-	-	-	-	-	-
15 Obiliq	1	-	-	-	-	-	-	1	-	-	-	-	-	-	-	-	-	-
16 Rahovec	8	1	-	1	-	-	-	4	1	-	1	-	-	-	-	-	-	-
17 Pejë	13	1	-	2	-	-	-	7	1	-	-	-	-	-	-	-	-	2
18 Podujevë	14	5	-	-	-	-	3	4	1	1	-	-	-	-	-	-	-	-
19 Prishtinë	77	-	1	3	-	-	4	31	1	14	3	-	2	5	2	1	4	-
20 Prizren	58	-	-	5	-	-	2	24	4	6	-	-	-	2	1	2	2	1
21 Skenderaj	22	3	-	1	-	-	3	3	10	-	-	-	-	-	-	-	1	-
22 Shtime	10	-	1	1	-	-	-	5	2	-	-	-	-	1	-	-	-	-
23 Shtërpce	5	2	-	-	-	-	-	1	-	1	-	-	-	-	-	-	-	1
24 Suharekë	28	1	-	2	-	-	5	11	2	2	-	-	-	-	-	2	1	-
25 Ferizaj	27	-	-	8	-	-	1	9	4	1	-	-	-	-	-	-	1	1
26 Viti	8	1	-	1	-	1	-	2	2	-	-	-	-	-	-	-	-	1
27 Vushtrri	30	2	-	2	-	-	3	6	10	1	-	-	-	1	-	-	1	1
28 Zubin Potok	1	-	-	-	-	-	-	-	1	-	-	-	-	-	-	-	-	-
29 Zveqan	1	-	-	-	-	-	-	1	-	-	-	-	-	-	-	-	-	-
30 Malishevë	10	-	-	1	-	-	3	1	2	2	-	-	-	-	-	-	-	1
31 Juniku	3	-	-	-	-	-	1	1	-	1	-	-	-	-	-	-	-	-
32 Mamushë	3	-	-	-	-	-	2	1	-	-	-	-	-	-	-	-	-	-
33 Hani i Elezit	2	1	-	-	-	1	-	-	-	-	-	-	-	-	-	-	-	-
34 Graçanica	0	-	-	-	-	-	-	-	-	-	-	-	-	-	-	-	-	-
35 Ranillug	3	-	-	-	-	-	-	2	-	1	-	-	-	-	-	-	-	-
36 Partesh	0	-	-	-	-	-	-	-	-	-	-	-	-	-	-	-	-	-
37 Klokot	1	-	-	-	-	-	-	1	-	-	-	-	-	-	-	-	-	-
38 North.Mitrovica	2	-	-	-	-	-	-	1	-	1	-	-	-	-	-	-	-	-

# Kosovo Agency of Statistics

## *short description*

**Kosovo Agency of Statistics** is a professional institution which deals with collection, processing and publication of official statistical data. As such acts since 1948 and has passed through several historical stages, structured according to state regulation of those times.

On 2 August 1999, the Agency has resumed his professional work (after nine years of interruption of all statistical series detrimental to the interest of Kosovo), as an independent institution under the Ministry of Public Administration. Since 12.12.2011 the Agency operates in the frames of the Prime Minister's Office. Office is funded by the Kosovo Consolidated Budget, but also by donors for specific projects and for technical professional support.

**Kosovo Agency of Statistics** acts according to the Law No. 04/L-036 which entered into force on 12.12.2011. Strategic development plan 2009-2013 is the middle term implementation for the development of statistical system in correlation with the European Union statistics (EUROSTAT).

**Kosovo Agency of Statistics** has this organizational structure: production departments; (Department of Economic statistics and National Accounts, Department of Agriculture and Environment statistics and Department of Social statistics. **Support Departments**; Department of Methodology and Information Technology, Department of Policy Planning, Coordination and Communication, Department of Census and survey and Department of Administration.

In ASK are employed in total 139 workers, of them 104 (74,8 %) at the headquarters of the Agency, while in the Regional Offices, 35 (25,2%), with qualifying structure, 70,5% with university education to 29,5% with secondary education.

We have professional and technical cooperation with all Ministries of the Government of Kosovo, especially with the Ministry of Economy and Finance, Central Bank of Kosovo, with international institutions, EUROSTAT, International Monetary Fund, World Bank, Sweden's SIDA, DFID, UNFPA, UNDP, UNICEF, and with the statistical institutions of the countries in the region.

**Kosovo Agency of Statistics** almost completely covers the territory of Kosovo, based on the statistical structure of the enumeration areas as the basic unit and sole in the country from which it gets first hand information. All surveys conducted in the field use the extension of the samples in these enumeration areas but also a statistical methodology according to international recommendations. During the collection of statistical data and reports from reporting entities are involved professionals, technicians, administrators, servants of the country offices, field enumerators from regional offices, etc.

We have successfully implemented the project of Population Census, Households and Dwellings in 2011, Census that was not carried out since 1981. Results obtained from the Census will have an important role in compiling the development policies.

**The mission of the Agency**; to meet the needs of users with qualitative statistical data, objective, in time and space so that users have reliable base to conduct regular analysis in the interest of planning and project development at the municipal and country level. To support government institutions, scientific institutes, research academies, businesses in order to provide proper information for decision-makers and other users in Kosovo.

- **Address:** KOSOVO AGENCY OF STATISTICS  
Street. "Zenel Salihu", No. 4, 10000 Pristina
- **Telephone:** +381 (0) 38 200 31 129  
CEO: +381 (0) 38 200 31 112
- **Fax::** +381 (0) 38 235 033
- **E-mail:** [economic@rks-gov.net](mailto:economic@rks-gov.net)
- **Web-faqe:** <http://ask.rks-gov.net/>