



Republika e Kosovës  
Republika Kosova-Republic of Kosovo  
*Qeveria - Vlada - Government*

Zyra e Kryeministrit -Ured Premijera -Office of the Prime Minister  
*Agjencia e Statistikave të Kosovës - Agencija za Statistike Kosova - Kosovo Agency of Statistics*

## **Series 3: Economic Statistics**

# **Statistical Repertoire of Enterprises in Kosovo (Q4 - 2014)**



AGJENCIA E STATISTIKAVE TË KOSOVËS  
AGENCIJA ZA STATISTIKE KOSOVA  
KOSOVO AGENCY OF STATISTICS

## Foreword

Kosovo Agency of Statistics (KAS) has prepared **publication "Statistical Repertoire of Enterprises in Kosovo Q4 2014"**, on the the new businesses registered at the Agency for Registration of Businesses in Kosovo (ARBK), from the date 10.01.2014 until 31.12.2014 (fourth quarter 2014).

Statistical Register of Business (SRB) is part of KAS which contains all businesses operating in the territory of the Republic of Kosovo and as such serves for statistics and analysis of business demography, preparation of samples and the establishment of results at the country level for all surveys conducted with businesses. RSB also serves as the main source of information for the calculation of Gross Domestic Product.

SRB is built and updated continually based on two administrative sources of data (ARBK and Tax Administration) as well as regular statistical surveys carried out by the Agency.

Continued demand for statistical information for businesses are coming every day from various users, internal or those outside KAS, so based on these requirements we have prepared various table and graphic data.

We believe that this publication will serve as a useful reference for all users of KAS statistical data, and will serve as useful and relevant economic information for Kosovo.

Comments, remarks, suggestions and proposals regarding this publication are welcome and they can be sent to the following email address: [economic@rks-gov.net](mailto:economic@rks-gov.net)

Statistical Repertoire of Enterprises in Kosovo is a regular quarterly publication.

*NOTE: Since 1 September 2014, the nomenclature of economic activities in the new version NACE Rev. 2, and some previously published data are converted in this version.*

Publication was prepared by:

Ilir T. Berisha – Director of Department  
Ismail Sahiti – Head of Division,  
Hysni Elshani – Head of Sector,  
Muhamet Kastrati – IT Specialist SRB,  
Luljeta Krasniqi – Senior Officer,  
Valdete Navakazi - Senior Officer,  
Ahmet Cakolli - Design Officer.

February, 2015

Chief Executive Officer, KAS  
Isa Krasniqi

## List of Abbreviations

**KAS** Kosovo Agency of Statistics

**SRB** Statistical Register of Business

**ARBK** Agency for Registration of Businesses in Kosovo

**ATK** Tax Administration of Kosovo

**MTI** Ministry of Trade and Industry

**GDP** Gross Domestic Product (GDP)

**KPA** Kosovo Privatization Agency

**EC** European Commission

**NEA** Nomenclature of Economic Activities

**NACE Rev. 1** (Nomenclature of Economic Activities of EC - 1st Version)

**NACE Rev. 2** (Nomenclature of Economic Activities of EC - 2nd Version)

**SME** Small and Medium Enterprises

**Q1** First Quarter

**Q2** Second Quarter

**Q3** Third Quarter

**Q4** Fourth Quarter

## Symbols

- No occurrence

: Data missing

## C o n t e n t

	Page
1 Characteristics of new enterprises in Q4 - 2014 .....	4
2 Methodological explanations and definitions .....	5
2.1. Definitions.....	6
2.2. Legal form of organization of business .....	7
3 New and terminated enterprises by quarters .....	8
4 Enterprises by economic section, legal form of organization and the number of employees .....	10
5 Categorization of enterprises by size and gender .....	11
Number of new enterprises by municipality .....	12
6 New individual and non-individual enterprises .....	14
7 New enterprises by economic section and the number of employees .....	16
8 New enterprises according to legal form .....	17
9 New enterprises according to the origin of capital .....	18
10 Terminated enterprises .....	19

## **1 Characteristics of new enterprises in Q4 - 2014**

During the fourth quarter of 2014 (Q4 - 2014) were registered a total of 2,175 enterprises, while in the previous quarter (Q3 - 2014) were registered 1919 of them, which have been an increase between the quarters of the same year to 256 enterprises, of which expressed in percentage we have for 13.3% more new enterprises in this quarter.

Increase of 20.5% of new businesses has been observed compared with the same quarter of the previous year (Q4 - 2013).

Favourite economic activities during the quarter were trade with 648 new enterprises (29.8%), accommodation and food service activities with 222 (10.2%), manufacturing with 216 (9.9%), agriculture, forestry and fishing with 168 (7.7%), construction with 166 (7.6%), professional, scientific and technical activities with 148 (6.8%), transport and storage with 143 (6.5%), other service activities 120 (5.5%), information and communication with 80 enterprises (3.7%), while the other activities participate in very small scale.

Category of number of employees by 1-4 (employees) represents about 2,118 enterprises or 97.4% of new enterprises, category 5-9 with 35 (1.6%), 10-19 with 17 (0.8%), 20-49 with 4 (0.2%), with 250+ category, there is only one enterprise, while in other categories there was no enterprise registered in this quarter.

Regarding the geographical scope of new enterprises to the municipal level as in every quarter prevails Prishtina with 564 new enterprises (expressed in percentage 25.9%), Prizren, 181 (8.3%), Ferizaj with the 152 (7.0%), Peja with 133 (6.1%), Gjilan with 124 (5.7%), Fushe Kosova with 87 (4.0%), Mitrovica and Gjakova both with 79 (3.6%), while other municipalities had smaller number of registered enterprises during this quarter.

## 2 Methodological explanations and definitions

Statistical Register of Business (SRB) serves for statistical purposes and shall clearly identify the units in order:

- To allow receiving information about them via administrative sources.
- To enable the preparation of samples; coordination of surveys and the aggregation/grouping of results;
- To allow analysis of the demographic population of enterprises and units associated with them.
- Provide input data (input) for the calculation of Gross Domestic Product (GDP).

Statistical Register of Business (SRB) - **Includes** all legal entities (enterprises) that exercise economic activity within the territory of Kosovo.

**Does not include:** Public administration, Non-profit Organizations and International Organizations.

### Sources for updating the SRB variables are:

- Administrative
  - o Information from the Agency for Registration of Businesses in Kosovo
  - o Information from the Tax Administration of Kosovo
- Statistical
  - o Enterprise Structure Survey
  - o Survey about Hotel Service
  - o Collection of Production Price
  - o Collection of Import Price.

### Main variables in the SRB are grouped by:

- **Identification of variables**
  - o Number of business registration (NBR), name, legal form, ownership, addresses, communication (phone, fax, email, etc.)
- **Stratified variables**
  - o Main economic activity, size by employees
- **Demographic variables**
  - o Date of registration, date of shutdown/closure
- **Updated variables are**
  - o Status of activity (active or non-active)
  - o Economic activity of the enterprise (NACE Rev. 1)
  - o Size by employees
  - o Address, and communication variables (telephone, fax, mobile, e-mail)

## 2.1. Definitions

Nomenclature of Economic Activities (NACE), is the four-digit level classification of economic activities exerted in different subjects.

This nomenclature is translation and adaptation of nomenclature of the European Community Economic Activities (NACE Rev. 2. in English).

Use of this nomenclature is mandatory since 1 September 2014 in all the institutions of the Republic of Kosovo and based on the regulation No.11/2013 adopted by the Government of the Republic of Kosovo.

The structure of economic activities NACE Rev. 2 consists of 21 sections presented below labeled with letters from A to S.

- A. Agriculture, forestry and fishing
- B. Mining and quarry
- C. Manufacturing
- D. Supply of electricity, gas, steam and air conditioning
- E. Water supply, sewerage, waste management and land revitalization activities
- F. Construction
- G. Wholesale and retail trade, repair of motor vehicles, motorcycles
- H. Transport and storage
- I. Accommodation and food service activities
- J. Information and communication
- K. Financial and insurance activities
- L. Real estate activities
- M. Professional, scientific and technical activities
- N. Administrative and support activities
- O. Public administration and defense
- P. Education
- Q. Human health and social work activities
- R. Arts, entertainment and recreation
- S. Other services activities
- T. Activities of households as employers
- U. Activities of organizations and extra-territorial bodies

Classes of economic activities according to the new nomenclature NACE Rev. 2 are total of 615 of them, which are encoded by four digit code ranging from 0111 to 9900.

## 2.2. Legal form of organization of business

Definitions applied to legal forms of enterprises under Regulation 2001/16 and Law No. 02/L123 on Trade and Corporation Associations which are applied when registering in the ARBK are as follows:

**1. Individual business** - is the **only natural person** who performs economic activities for the purpose of profit and who is registered in the KBRA. In the individual business the owner has unlimited liability for all debts of the company. The company has an official name or includes the surname of the lawful owner

**2. General partnership** - The general partnership, all partners jointly respond without restriction for partnership debts. A partnership has a label, which may include the name of one or more partners.

**3. Limited partnership** - In limited partnerships, except "unlimited" partners (partners responsible jointly without limitation for the debts of the company) also participate "limited" partners or those responsible for the company's obligations to the limit of the value of their founding contributions/capital.

**4. Limited liability enterprises** - Limited liability enterprises are those enterprises that are established by one or several founders, who answer only to the limit of the value of their contribution. Limited liability enterprise has a label, which may include the name of one or more partners.

**5. Shareholders** – Shareholders are those whose capital is divided into shares and shareholders respond only to the limit of the value of their contribution. Shareholder enterprise (a joint stock enterprises) can be established by having one or more shareholders.

**6. Foreign company** - A foreign company is a business and from the moment of registration is considered a branch in Kosovo that has no identity of legal person. After registration shall enjoy all the rights and obligations established under the applicable law.

**7. Social enterprise** - Social enterprise means a legal person that most assets and capital are socially owned. These enterprises until the privatization are monitored and registered by the Kosovo Privatization Agency under the Law Commercial Companies No.02/L-123.

**8. Public enterprise** - Public enterprise is the enterprise which carries out activities of general interest which is established by the state. Public enterprise is monitored by the government and organized as a joint stock company in accordance with applicable law on Commercial Companies. All ownership interests in a public company will be represented by shares and these shares will be registered.

**9. Agricultural cooperative** - Agricultural cooperative is a business organization created by natural or legal persons who must be farmers who contribute with their private property to the share of capital.

**10. Enterprise under the jurisdiction of the KPA** - are ex-social owned enterprises which are now managed and supervised by the KPA (Kosovo Privatization Agency).

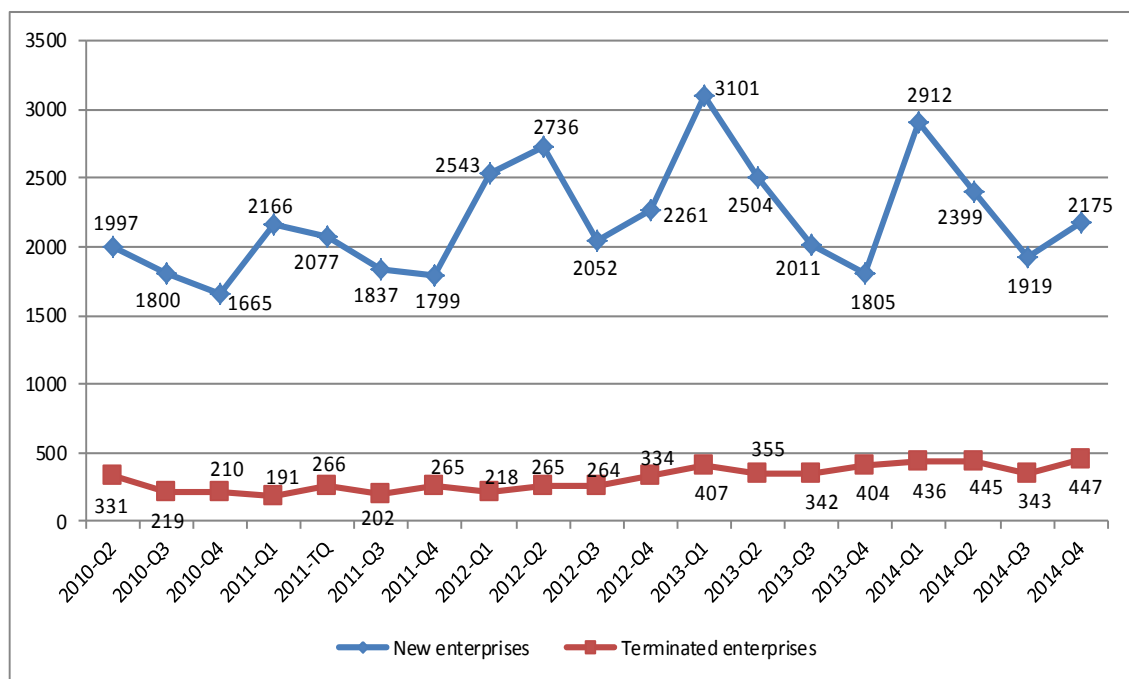


### 3 New and terminated enterprises by quarters

**Table 1. Number of new enterprises and re-registered enterprises by quarters and section of economic activities**

Periods		Sections of economic activities																		
		Agriculture, forestry and fishing	Mining and quarry	Production	Supply of electricity, gas, steam and air conditioning	Water supply, sewerage, waste management and land revitalization activities	Construction	Wholesale and retail trade, repair of motor vehicles, motorcycles	Transport and storage	Accommodation and food service activities	Information and communication	Financial and insurance activities	Real estate activities	Professional, scientific and technical activities	Administrative and support activities	Public administration and defense, compulsory social insurance	Education	Human health and social work activities	Arts, entertainment and recreation	Other service activities
Quarters	Total	A	B	C	D	E	F	G	H	I	J	K	L	M	N	O	P	Q	R	S
2012 - Q1	2528	174	9	239	5	18	268	820	175	243	96	4	9	155	57	7	32	39	48	130
2012 - Q2	2736	218	26	278	3	17	259	809	156	300	82	3	10	190	70	6	24	36	36	213
2012 - Q3	2051	127	9	184	7	12	193	598	140	205	84	6	11	131	48	8	32	34	56	166
2012 - Q4	2261	222	11	201	5	12	224	691	139	207	78	3	7	137	78	4	26	20	54	142
2012 Total	9576	741	55	902	20	59	944	2918	610	955	340	16	37	613	253	25	114	129	194	651
2013 - Q1	3100	301	10	299	9	19	337	867	201	264	104	6	135	169	60	9	32	48	54	176
2013 - Q2	2504	142	7	258	2	14	227	759	107	246	101	4	95	162	65	9	28	43	52	183
2013 - Q3	2011	122	7	163	6	11	201	565	108	240	82	8	15	119	53	6	20	48	63	174
2013 - Q4	1805	188	5	152	5	6	178	543	109	161	70	2	12	135	36	9	18	34	62	80
2013 Total	9420	753	29	872	22	50	943	2734	525	911	357	20	257	585	214	33	98	173	231	613
2014 - Q1	2911	205	10	283	4	13	284	887	181	293	121	12	21	180	77	12	33	50	88	157
2014 - Q2	2399	186	9	283	3	16	207	704	99	282	95	8	10	146	61	11	20	39	55	165
2014 - Q3	1919	115	7	196	3	13	146	574	111	237	61	11	7	97	49	2	18	33	60	179
2014 - Q4	2175	168	6	216	14	9	166	649	143	222	80	12	21	147	65	17	19	51	50	120
2014 Total	9404	674	32	978	24	51	803	2814	534	1034	357	43	59	570	252	42	90	173	253	621

**Graph 1. Number of new enterprises and those terminated by the respective quarters from Q2 2010 to Q4 2014**

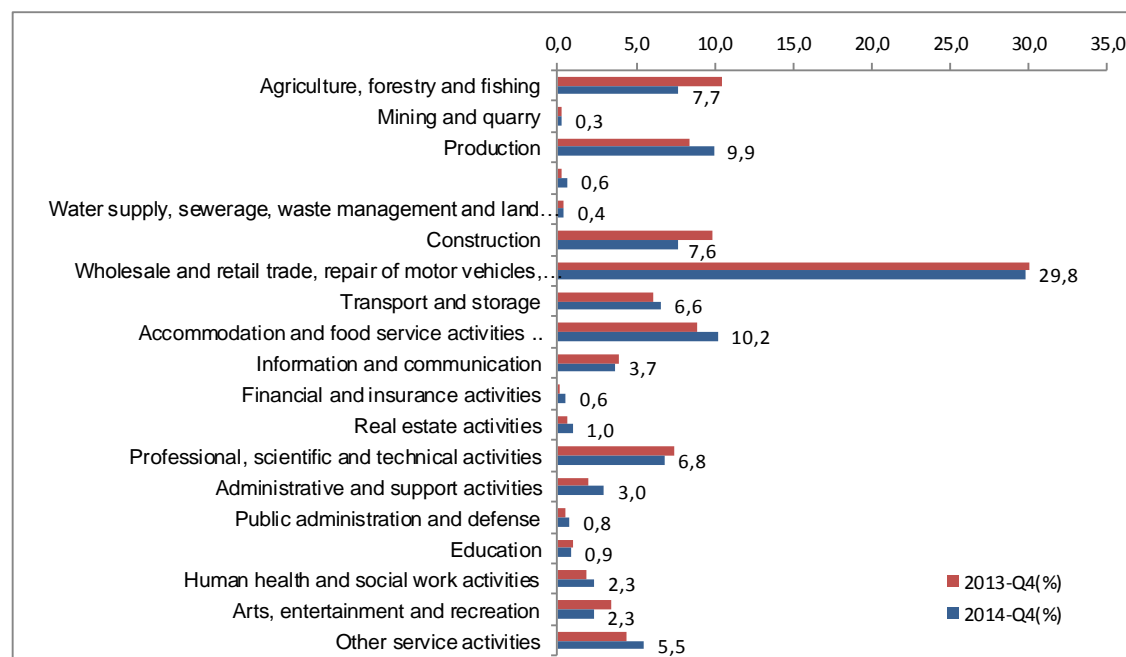


## 4 Enterprises by economic section, legal form of organization and the number of employees

**Table 2. Number of new enterprises by section of economic activity, legal form of organization and the number of employees in Q4 2014**

Sections of economic activities	Total	Category of number of employees					
		Non-individual businesses			Individual business		
		Total	1-4	5 and	Total	1-4	5 and
<b>Total</b>	<b>2175</b>	<b>1632</b>	<b>1614</b>	<b>18</b>	<b>543</b>	<b>504</b>	<b>39</b>
A Agriculture, forestry and fishing	168	148	148	-	20	18	2
B Mining and quarry	6	-	-	-	6	5	1
C Production	216	165	164	1	51	45	6
D Supply of electricity, gas, steam and Air Conditioning	14	2	2	-	12	11	1
E Water supply, sewerage, waste management and land revitalization activities	9	2	2	-	7	7	-
F Construction	166	107	102	5	59	52	7
G Wholesale and retail trade, repair of motor vehicles, motorcycles	648	489	487	2	159	150	9
H Transport and storage	143	127	125	2	16	16	-
I Accommodation and food service activities ..	222	193	190	3	29	26	3
J Information and communication	80	40	39	1	40	39	1
K Financial and insurance activities	12	5	5	-	7	6	1
L Real estate activities	21	8	8	-	13	13	-
M Professional, scientific and technical activities	148	96	93	3	52	47	5
N Administrative and support activities	65	35	35	-	30	29	1
O Public administration and defense	17	3	2	1	14	14	-
P Education	19	15	15	-	4	2	2
Q Human health and social work activities	51	40	40	-	11	11	-
R Arts, entertainment and recreation	50	45	45	-	5	5	-
S Other service activities	120	112	112	-	8	8	-

**Graph 2. New enterprises by economic section in Q4 2014**

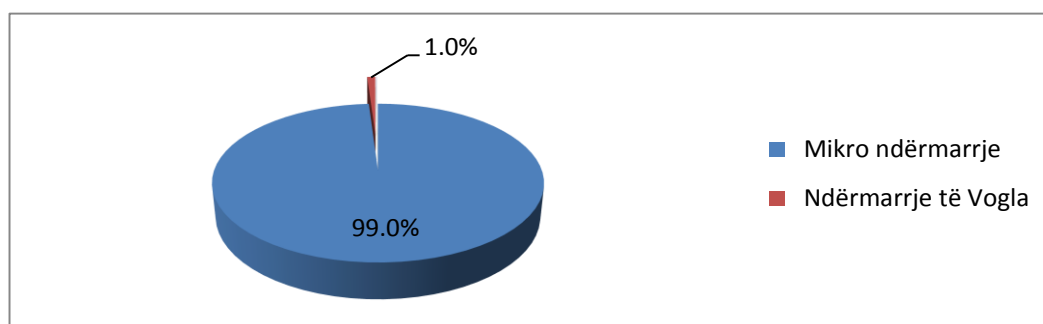


## 5 Categorization of enterprises by size and gender

**Table 3. Number of SMEs for Q4 2014**

Classification	Number of employees		No. of businesses	%
Micro enterprises	1 - 9	workers	2153	99,0
Small enterprises	10 - 49	workers	21	1,0
Medium enterprise	50 - 249	workers	-	-
Large enterprise	250 e mbi	workers	1	0,0
<b>Total</b>			<b>2175</b>	<b>100,0</b>

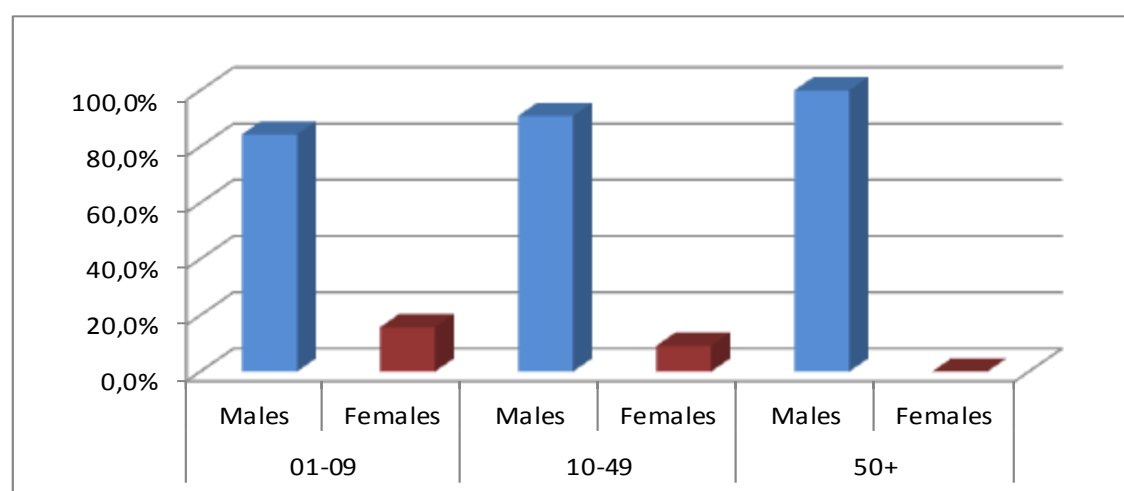
**Graph 3. Structure of enterprises by size for Q4 2014**



**Table 4. Structure of enterprises by gender of owners for Q4 2014**

Struktura e ndërmarrjeve sipas gjinisë							
Total		01-09		10-49		50+	
Meshkuj	Femra	Meshkuj	Femra	Meshkuj	Femra	Meshkuj	Femra
84.4%	15.6%	84.3%	15.7%	90.9%	9.1%	100.0%	0.0%

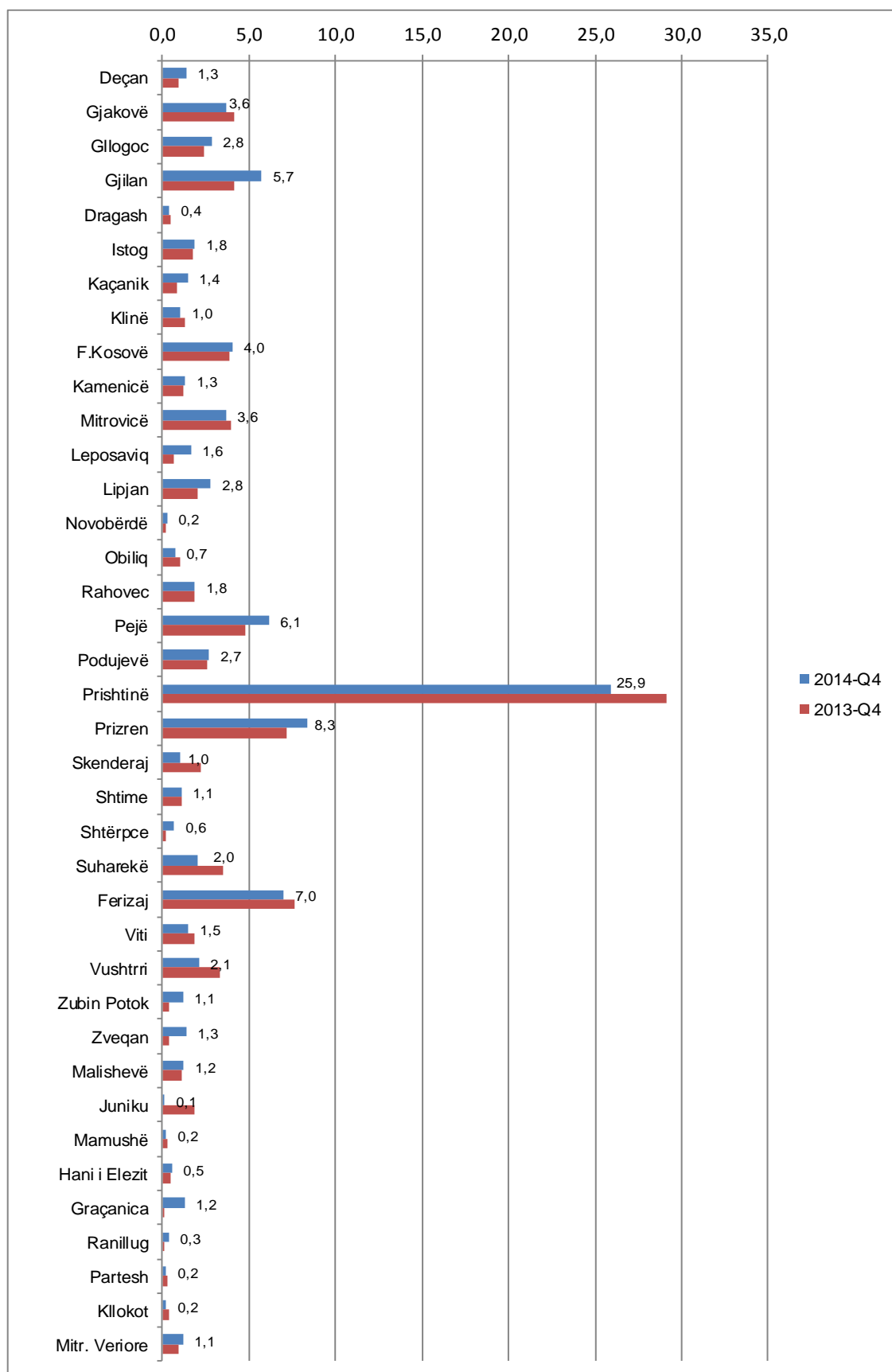
**Graph 4. Graphic presentation of the gender of owners enterprises for Q4 2014**



## Number of new enterprises by municipality

**Table 5. Number of new enterprises by municipalities and section of economic activity in Q4 2014**

Municipalities		Sections of economic activities																		
		Agriculture, forestry and fishing	Mining and quarry	Production	Supply of electricity, gas, steam and air conditioning	Water supply, sewerage, waste management and land revitalization activities	Construction	Wholesale and retail trade, repair of motor vehicles, motorcycles	Transport and storage	Accommodation and food service activities	Information and communication	Financial and insurance activities	Real estate activities	Professional, scientific and technical activities	Administrative and support activities	Public administration and defense, compulsory social insurance	Education	Human health and social work activities	Arts, entertainment and recreation	Other service activities
Code and name	Total	A	B	C	D	E	F	G	H	I	J	K	L	M	N	O	P	Q	R	S
	2175	168	6	216	14	9	166	649	143	222	80	12	21	147	65	17	19	51	50	120
01 Deçan	29	3	-	1	-	-	2	12	1	2	-	-	-	2	-	-	-	-	2	4
02 Gjakovë	79	4	-	11	-	-	5	26	1	11	3	-	-	4	-	1	-	3	2	8
03 Glogoc	61	8	-	11	-	1	11	12	1	1	1	-	-	5	2	2	-	1	3	2
04 Gjiilan	124	8	-	8	-	-	13	35	14	15	1	-	2	10	2	1	1	3	4	7
05 Dragash	8	2	-	-	-	-	-	3	-	-	-	-	-	1	-	-	-	1	-	1
06 Istog	40	8	-	3	1	-	4	10	2	4	1	-	-	1	-	1	-	-	-	5
07 Kaçanik	31	1	-	4	-	1	2	8	2	5	3	-	-	1	1	-	-	-	-	3
08 Klinë	22	3	1	3	-	-	1	5	-	2	1	-	-	1	3	-	-	-	2	-
09 F.Kosovë	87	4	1	6	1	1	7	26	15	8	2	1	2	4	3	1	1	1	1	2
10 Kamenicë	28	5	1	2	-	-	3	5	3	2	2	-	-	-	-	-	-	-	3	2
11 Mitrovicë	79	4	-	10	1	-	7	25	6	10	1	-	1	1	3	-	-	3	5	2
12 Leposaviq	35	19	-	1	-	-	1	12	1	-	-	-	-	1	-	-	-	-	-	-
13 Lipjan	60	2	-	6	-	-	9	18	12	6	1	-	-	-	1	-	-	-	3	2
14 Novobërdë	5	-	-	-	-	-	1	2	-	1	-	-	-	-	-	-	-	-	-	1
15 Obiliq	15	3	-	2	-	-	1	6	2	1	-	-	-	-	-	-	-	-	-	-
16 Rahovec	40	4	-	7	-	-	4	10	1	4	1	-	-	3	2	-	-	-	1	3
17 Pejë	133	5	-	9	1	-	12	41	21	11	5	1	-	6	4	2	-	-	3	12
18 Podujevë	58	9	-	9	-	1	5	10	6	12	1	-	-	-	1	-	1	-	2	1
19 Prishtinë	564	12	2	38	6	2	32	169	11	53	36	9	12	73	28	7	7	20	7	40
20 Prizren	181	2	-	17	1	1	6	71	9	22	3	-	1	14	3	2	3	14	6	6
21 Skenderaj	22	5	-	2	-	-	3	4	2	2	1	-	-	2	-	-	-	-	-	1
22 Shtime	23	1	-	8	-	-	-	8	1	2	1	-	-	-	-	-	-	-	1	1
23 Shtërpce	14	3	-	3	-	-	-	3	-	1	-	-	-	4	-	-	-	-	-	-
24 Suharekë	44	3	-	4	1	-	6	13	2	8	1	-	-	1	-	-	-	1	1	3
25 Ferizaj	152	2	-	25	1	-	10	48	12	19	4	-	3	9	8	-	3	-	1	7
26 Viti	32	3	-	3	-	1	8	7	4	2	1	-	-	-	2	-	1	-	-	-
27 Vushtrri	45	-	-	3	-	-	3	14	5	7	3	-	-	-	1	-	-	2	3	4
28 Zubin Potok	25	19	-	-	-	-	-	2	1	-	2	-	-	-	-	-	-	-	-	1
29 Zveqan	29	19	-	2	-	1	-	6	-	-	1	-	-	-	-	-	-	-	-	-
30 Malishevë	26	-	1	5	-	-	6	9	2	1	-	-	-	1	-	-	-	-	-	1
31 Juniku	2	-	-	-	-	-	1	-	-	-	-	-	-	-	-	-	1	-	-	-
32 Mamushë	4	-	-	-	-	-	1	3	-	-	-	-	-	-	-	-	-	-	-	-
33 Hani i Elezit	11	-	-	1	-	-	2	3	3	1	1	-	-	-	-	-	-	-	-	-
34 Graçanica	27	2	-	3	1	-	-	12	1	4	1	1	-	1	-	-	1	-	-	-
35 Ranillug	7	3	-	2	-	-	-	-	1	1	-	-	-	-	-	-	-	-	-	-
36 Partesh	4	-	-	1	-	-	-	2	-	1	-	-	-	-	-	-	-	-	-	-
37 Kllokot	4	-	-	-	-	-	-	2	1	1	-	-	-	-	-	-	-	-	-	-
38 Northern Mitro	25	2	-	6	-	-	-	7	-	2	2	-	-	2	1	-	-	2	-	1

**Graph 5. Structure of new enterprises by municipalities in Q4 2014**

## 6 New individual and non-individual enterprises

**Table 6. Number of new individual enterprises by municipalities and section of economic activity in Q4 2014**

Municipalities	Total	Sections of economic activities																		
		Agriculture, forestry and fishing	Mining and quarry	Production	Supply of electricity, gas, steam and air conditioning	Water supply, sewerage, waste management and land revitalization activities	Construction	Wholesale and retail trade, repair of motor vehicles, motorcycles	Transport and storage	Accommodation and food service activities	Information and communication	Financial and insurance activities	Real estate activities	Professional, scientific and technical activities	Administrative and support activities	Public administration and defense, compulsory social insurance	Education	Human health and social work activities	Arts, entertainment and recreation	Other service activities
Code and name	1630	148	-	165	2	2	107	488	127	193	40	5	8	95	35	3	15	40	45	112
01 Deçan	26	3	-	1	-	-	2	10	1	1	-	-	-	2	-	-	-	-	2	4
02 Gjakovë	72	3	-	8	-	-	5	24	1	11	3	-	-	4	-	-	-	3	2	8
03 Glogoc	45	8	-	5	-	1	7	11	1	1	-	-	-	3	2	1	-	1	2	2
04 Gjiilan	104	7	-	7	-	-	9	28	14	14	-	-	1	7	2	-	1	3	4	7
05 Dragash	8	2	-	-	-	-	-	3	-	-	-	-	-	1	-	-	-	1	-	1
06 Istog	33	8	-	3	-	-	2	8	2	4	-	-	-	1	-	-	-	-	-	5
07 Kaçanik	30	1	-	4	-	-	2	8	2	5	3	-	-	1	1	-	-	-	-	3
08 Klinë	21	3	-	3	-	-	1	5	-	2	1	-	-	1	3	-	-	-	2	-
09 F.Kosovë	60	3	-	3	-	-	5	15	15	8	2	1	-	1	2	1	1	-	1	2
10 Kamenicë	26	5	-	2	-	-	3	4	3	2	2	-	-	-	-	-	-	-	3	2
11 Mitrovicë	63	2	-	6	-	-	4	21	6	9	1	-	1	1	2	-	-	3	5	2
12 Leposaviq	28	19	-	-	-	-	1	6	1	-	-	-	-	1	-	-	-	-	-	-
13 Lipjan	54	2	-	6	-	-	7	15	12	6	1	-	-	-	-	-	-	-	3	2
14 Novobërdë	5	-	-	-	-	-	1	2	-	1	-	-	-	-	-	-	-	-	-	1
15 Obiliq	13	2	-	2	-	-	1	5	2	1	-	-	-	-	-	-	-	-	-	-
16 Rahovec	33	3	-	6	-	-	2	8	1	4	-	-	-	3	2	-	-	-	1	3
17 Pejë	111	4	-	7	-	-	8	38	19	10	2	1	-	5	2	-	-	-	3	12
18 Podujevë	50	9	-	7	-	-	3	9	5	12	1	-	-	-	-	-	1	-	2	1
19 Prishtinë	280	6	-	25	-	1	5	86	3	35	12	2	4	37	11	1	4	10	4	34
20 Prizren	152	1	-	13	-	-	5	62	9	19	1	-	-	12	1	-	3	14	6	6
21 Skenderaj	21	5	-	2	-	-	3	4	2	2	-	-	-	2	-	-	-	-	-	1
22 Shtime	22	1	-	8	-	-	-	8	1	2	-	-	-	-	-	-	-	-	1	1
23 Shtërpce	13	3	-	2	-	-	-	3	-	1	-	-	-	4	-	-	-	-	-	-
24 Suharekë	35	1	-	1	1	-	3	13	1	8	1	-	-	1	-	-	-	1	1	3
25 Ferizaj	110	1	-	23	-	-	8	34	8	15	2	-	2	5	4	-	2	-	-	6
26 Viti	30	3	-	3	-	-	8	7	4	2	-	-	-	-	2	-	1	-	-	-
27 Vushtrri	42	-	-	3	-	-	3	14	5	7	2	-	-	-	-	-	-	2	3	3
28 Zubin Potok	25	19	-	-	-	-	-	2	1	-	2	-	-	-	-	-	-	-	-	1
29 Zveqan	26	19	-	2	-	-	-	4	-	-	1	-	-	-	-	-	-	-	-	-
30 Malishevë	20	-	-	3	-	-	6	6	2	1	-	-	-	1	-	-	-	-	-	1
31 Juniku	2	-	-	-	-	-	1	-	-	-	-	-	-	-	-	-	1	-	-	-
32 Mamushë	2	-	-	-	-	-	1	1	-	-	-	-	-	-	-	-	-	-	-	-
33 Hani i Elezit	9	-	-	-	-	-	1	3	3	1	1	-	-	-	-	-	-	-	-	-
34 Graçanicë	21	1	-	1	1	-	-	10	1	4	1	1	-	-	-	-	1	-	-	-
35 Ranillug	6	2	-	2	-	-	-	-	1	1	-	-	-	-	-	-	-	-	-	-
36 Partesh	4	-	-	1	-	-	-	2	-	1	-	-	-	-	-	-	-	-	-	-
37 Klokot	4	-	-	-	-	-	-	2	1	1	-	-	-	-	-	-	-	-	-	-
38 Northern Mitro	24	2	-	6	-	-	-	7	-	2	1	-	-	2	1	-	-	2	-	1

**Table 7. Number of new enterprises not-individual by municipalities and departments of economic activity in Q4 2014**

Municipalities		Sections of economic activities																		
		Agriculture, forestry and fishing	Mining and quarry	Production	Supply of electricity, gas, steam and air conditioning	Water supply, sewerage, waste management and land revitalization activities	Construction	Wholesale and retail trade, repair of motor vehicles, motorcycles	Transport and storage	Accommodation and food service activities	Information and communication	Financial and insurance activities	Real estate activities	Professional, scientific and technical activities	Administrative and support activities	Public administration and defense, compulsory social insurance	Education	Human health and social work activities	Arts, entertainment and recreation	Other service activities
Code and name	Total	A	B	C	D	E	F	G	H	I	J	K	L	M	N	O	P	Q	R	S
	545	20	6	51	12	7	59	161	16	29	40	7	13	52	30	14	4	11	5	8
01 Deçan	3	-	-	-	-	-	-	2	-	1	-	-	-	-	-	-	-	-	-	-
02 Gjakovë	7	1	-	3	-	-	-	2	-	-	-	-	-	-	-	1	-	-	-	-
03 Glogoc	16	-	-	6	-	-	4	1	-	-	1	-	-	2	-	1	-	-	1	-
04 Gjiilan	20	1	-	1	-	-	4	7	-	1	1	-	1	3	-	1	-	-	-	-
05 Dragash	-	-	-	-	-	-	-	-	-	-	-	-	-	-	-	-	-	-	-	-
06 Istog	7	-	-	-	1	-	2	2	-	-	1	-	-	-	-	1	-	-	-	-
07 Kaçanik	1	-	-	-	-	1	-	-	-	-	-	-	-	-	-	-	-	-	-	-
08 Klinë	1	-	1	-	-	-	-	-	-	-	-	-	-	-	-	-	-	-	-	-
09 F.Kosovë	27	1	1	3	1	1	2	11	-	-	-	-	2	3	1	-	-	1	-	-
10 Kamenicë	2	-	1	-	-	-	-	1	-	-	-	-	-	-	-	-	-	-	-	-
11 Mitrovicë	16	2	-	4	1	-	3	4	-	1	-	-	-	-	1	-	-	-	-	-
12 Leposaviq	7	-	-	1	-	-	-	6	-	-	-	-	-	-	-	-	-	-	-	-
13 Lipjan	6	-	-	-	-	-	2	3	-	-	-	-	-	-	1	-	-	-	-	-
14 Novobërdë	-	-	-	-	-	-	-	-	-	-	-	-	-	-	-	-	-	-	-	-
15 Obiliq	2	1	-	-	-	-	-	1	-	-	-	-	-	-	-	-	-	-	-	-
16 Rahovec	7	1	-	1	-	-	2	2	-	-	1	-	-	-	-	-	-	-	-	-
17 Pejë	22	1	-	2	1	-	4	3	2	1	3	-	-	1	2	2	-	-	-	-
18 Podujevë	8	-	-	2	-	1	2	1	1	-	-	-	-	-	1	-	-	-	-	-
19 Prishtinë	284	6	2	13	6	1	27	83	8	18	24	7	8	36	17	6	3	10	3	6
20 Prizren	29	1	-	4	1	1	1	9	-	3	2	-	1	2	2	2	-	-	-	-
21 Skenderaj	1	-	-	-	-	-	-	-	-	-	1	-	-	-	-	-	-	-	-	-
22 Shtime	1	-	-	-	-	-	-	-	-	-	1	-	-	-	-	-	-	-	-	-
23 Shtërpce	1	-	-	1	-	-	-	-	-	-	-	-	-	-	-	-	-	-	-	-
24 Suharekë	9	2	-	3	-	-	3	-	1	-	-	-	-	-	-	-	-	-	-	-
25 Ferizaj	42	1	-	2	1	-	2	14	4	4	2	-	1	4	4	-	1	-	1	1
26 Viti	2	-	-	-	-	1	-	-	-	-	1	-	-	-	-	-	-	-	-	-
27 Vushtrri	3	-	-	-	-	-	-	-	-	-	1	-	-	-	1	-	-	-	-	1
28 Zubin Potok	-	-	-	-	-	-	-	-	-	-	-	-	-	-	-	-	-	-	-	-
29 Zveqan	3	-	-	-	-	1	-	2	-	-	-	-	-	-	-	-	-	-	-	-
30 Malishevë	6	-	1	2	-	-	-	3	-	-	-	-	-	-	-	-	-	-	-	-
31 Juniku	-	-	-	-	-	-	-	-	-	-	-	-	-	-	-	-	-	-	-	-
32 Mamushë	2	-	-	-	-	-	-	2	-	-	-	-	-	-	-	-	-	-	-	-
33 Hani i Elezit	2	-	-	1	-	-	1	-	-	-	-	-	-	-	-	-	-	-	-	-
34 Graçanicë	6	1	-	2	-	-	-	2	-	-	-	-	-	1	-	-	-	-	-	-
35 Ranillug	1	1	-	-	-	-	-	-	-	-	-	-	-	-	-	-	-	-	-	-
36 Partesh	-	-	-	-	-	-	-	-	-	-	-	-	-	-	-	-	-	-	-	-
37 Klokot	-	-	-	-	-	-	-	-	-	-	-	-	-	-	-	-	-	-	-	-
38 Northern Mitro	1	-	-	-	-	-	-	-	-	-	1	-	-	-	-	-	-	-	-	-

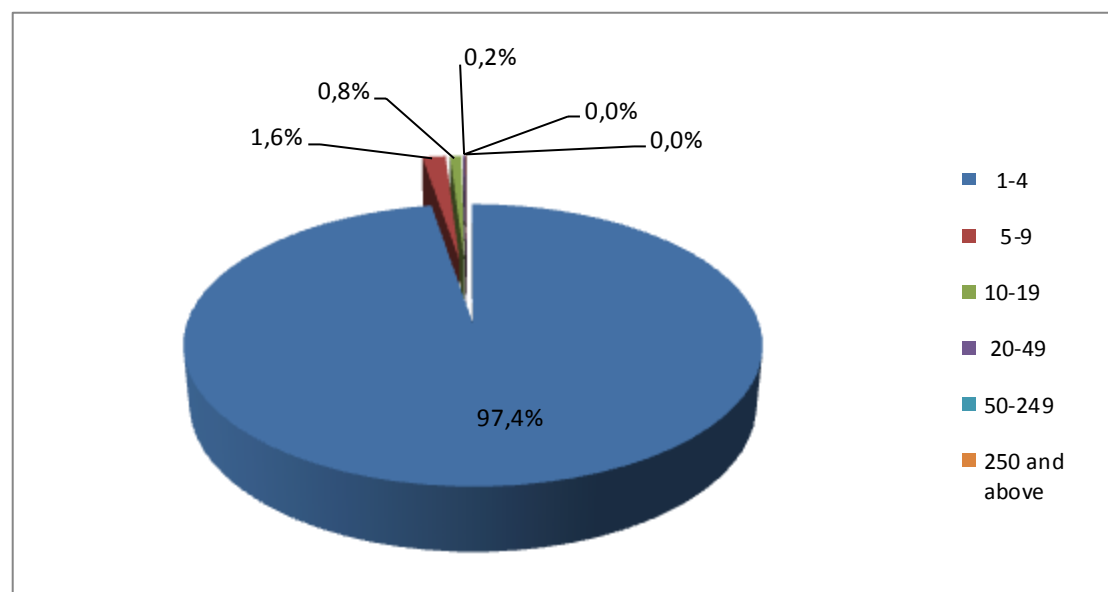


## 7 New enterprises by economic section and the number of employees

**Table 8. Number of new enterprises by section of economic activity and the number of employees in Q4 2014**

Sections of economic activities	Total	Category of number of employees					
		1-4	5-9	10-19	20-49	50-249	above
<b>Total</b>	<b>2175</b>	<b>2118</b>	<b>35</b>	<b>17</b>	<b>4</b>	<b>-</b>	<b>1</b>
<i>A</i> Agriculture, forestry and fishing	<b>168</b>	166	2	-	-	-	-
<i>B</i> Mining and quarry	<b>6</b>	5	-	1	-	-	-
<i>C</i> Production	<b>216</b>	209	4	2	1	-	-
<i>D</i> Supply of electricity, gas, steam and Air Conditioning	<b>14</b>	13	-	-	-	-	1
<i>E</i> Water supply, sewerage, waste management and land revitalization activities	<b>9</b>	9	-	-	-	-	-
<i>F</i> Construction	<b>166</b>	154	7	5	-	-	-
<i>G</i> Wholesale and retail trade, repair of motor vehicles, motorcycles	<b>649</b>	638	6	3	2	-	-
<i>H</i> Transport and storage	<b>143</b>	141	2	-	-	-	-
<i>I</i> Accommodation and food service activities ..	<b>222</b>	216	5	1	-	-	-
<i>J</i> Information and communication	<b>80</b>	78	1	1	-	-	-
<i>K</i> Financial and insurance activities	<b>12</b>	11	-	1	-	-	-
<i>L</i> Real estate activities	<b>21</b>	21	-	-	-	-	-
<i>M</i> Professional, scientific and technical activities	<b>147</b>	139	6	1	1	-	-
<i>N</i> Administrative and support activities	<b>65</b>	64	-	1	-	-	-
<i>O</i> Public administration and defense	<b>17</b>	16	1	-	-	-	-
<i>P</i> Education	<b>19</b>	17	1	1	-	-	-
<i>Q</i> Human health and social work activities	<b>51</b>	51	-	-	-	-	-
<i>R</i> Arts, entertainment and recreation	<b>50</b>	50	-	-	-	-	-
<i>S</i> Other service activities	<b>120</b>	120	-	-	-	-	-

**Graph 6. Structure of new enterprises by category of number of employees in Q4 2014**

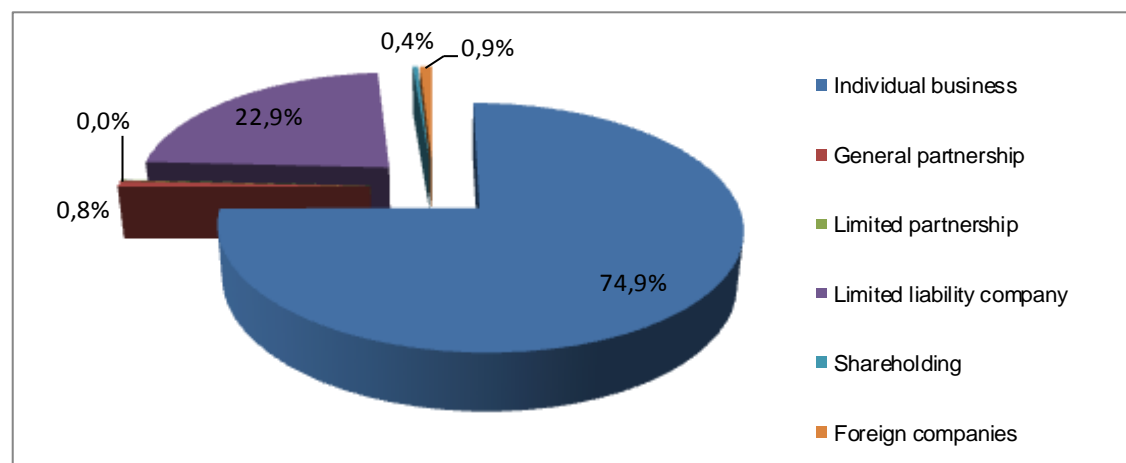


## 8 New enterprises according to legal form

**Table 9. Number of new enterprises by section of economic activity and legal form of organization in Q4 2014**

Sections of economic activities	Legal form of organization									
	Total	Individual business	General partnership	Limited partnership	Limited liability company	Shareholding	Foreign companies	Social enterprise	Public enterprise	Agricultural Cooperative
<b>Total</b>	<b>2175</b>	<b>1630</b>	<b>18</b>	<b>1</b>	<b>498</b>	<b>8</b>	<b>20</b>	-	-	-
A Agriculture, forestry and fishing	168	148	-	-	20	-	-	-	-	-
B Mining and quarry	6	-	-	-	6	-	-	-	-	-
C Production	216	165	2	1	46	1	1	-	-	-
D Supply of electricity, gas, steam and Air Conditioning	14	2	-	-	10	2	-	-	-	-
E Water supply, sewerage, waste management and land revitalization activities	9	2	-	-	7	-	-	-	-	-
F Construction	166	107	3	-	53	-	3	-	-	-
G Wholesale and retail trade, repair of motor vehicles, motorcycles	649	488	2	-	154	1	4	-	-	-
H Transport and storage	143	127	-	-	16	-	-	-	-	-
I Accommodation and food service activities ..	222	193	3	-	26	-	-	-	-	-
J Information and communication	80	40	2	-	35	-	3	-	-	-
K Financial and insurance activities	12	5	-	-	4	3	-	-	-	-
L Real estate activities	21	8	1	-	12	-	-	-	-	-
M Professional, scientific and technical activities	147	95	2	-	47	-	3	-	-	-
N Administrative and support activities	65	35	1	-	26	-	3	-	-	-
O Public administration and defense	17	3	-	-	13	-	1	-	-	-
P Education	19	15	-	-	4	-	-	-	-	-
Q Human health and social work activities	51	40	1	-	9	-	1	-	-	-
R Arts, entertainment and recreation	50	45	-	-	4	1	-	-	-	-
S Other service activities	120	112	1	-	6	-	1	-	-	-

**Graph 7. New enterprises by legal form of organization in Q4 2014**

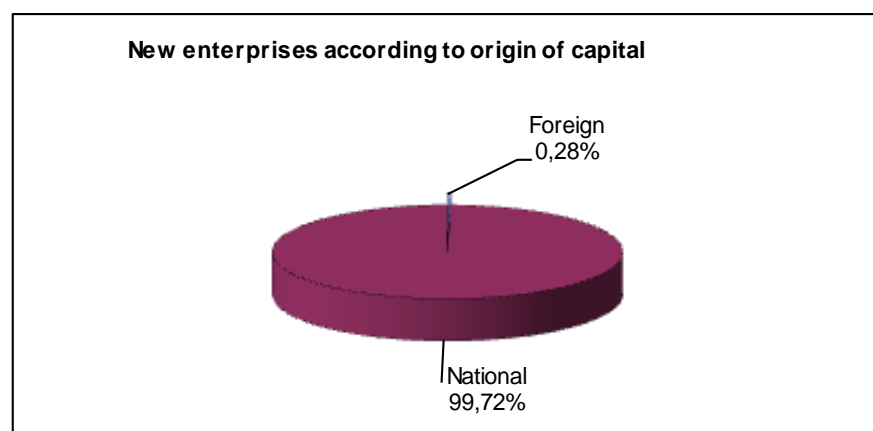


## 9 New enterprises according to the origin of capital

**Table 10. Number of new enterprises according to the origin of capital and the number of employees in Q4 2014**

Category of number of employees	Origin of capital					
	Total		Foreign		National	
	2175	100,0	6	100,0	2169	100,0
1-4	2118	97,4	6	100,0	2112	97,4
5-9	35	1,6	-	-	35	1,6
10-19	17	0,8	-	-	17	0,8
20-49	4	0,2	-	-	4	0,2
50-99	-	-	-	-	-	-
100-499	1	0,0	-	-	1	0,0
>= 500	-	-	-	-	-	-

**Graph 8. Structure of new enterprises by origin of capital**



## 10 Terminated enterprises

**Table 11. Number of terminated enterprises by municipalities and departments sections of economic activity in Q4 2014**

Municipalities	Total	Sections of economic activities																		
		A	B	C	D	E	F	G	H	I	J	K	L	M	N	O	P	Q	R	S
Code and name	447	29	1	37	-	5	31	140	31	57	14	-	4	27	15	1	5	11	9	30
01 Deçan	3	1	-	1	-	-	-	1	-	-	-	-	-	-	-	-	-	-	-	-
02 Gjakovë	40	4	-	5	-	-	3	14	3	5	1	-	-	-	2	1	-	-	1	1
03 Glogoc	8	-	-	2	-	-	1	2	1	1	-	-	-	-	-	-	-	-	-	1
04 Gjiilan	24	-	-	2	-	-	2	7	-	2	1	-	-	6	-	-	-	1	-	3
05 Dragash	9	-	-	3	-	-	-	3	2	-	-	-	-	-	-	-	-	-	-	1
06 Istog	3	-	-	-	-	-	-	2	1	-	-	-	-	-	-	-	-	-	-	-
07 Kaçanik	9	1	-	1	-	-	1	2	-	1	-	-	-	-	-	-	1	-	-	2
08 Klinë	2	1	-	-	-	-	-	1	-	-	-	-	-	-	-	-	-	-	-	-
09 F.Kosovë	12	2	1	2	-	-	1	4	-	1	-	-	-	-	1	-	-	-	-	-
10 Kamenicë	8	3	-	-	-	-	1	2	1	-	-	-	-	1	-	-	-	-	-	-
11 Mitrovicë	21	1	-	1	-	-	-	4	3	2	1	-	-	-	1	-	1	2	-	5
12 Leposaviq	2	1	-	-	-	-	-	1	-	-	-	-	-	-	-	-	-	-	-	-
13 Lipjan	14	-	-	1	-	1	2	4	-	2	1	-	-	2	-	-	-	-	-	1
14 Novobërdë	-	-	-	-	-	-	-	-	-	-	-	-	-	-	-	-	-	-	-	-
15 Obiliq	-	-	-	-	-	-	-	-	-	-	-	-	-	-	-	-	-	-	-	-
16 Rahovec	6	1	-	-	-	-	-	3	-	2	-	-	-	-	-	-	-	-	-	-
17 Pejë	27	2	-	-	-	-	3	11	2	3	-	-	-	3	1	-	-	-	1	1
18 Podujevë	19	2	-	-	-	-	1	6	4	3	-	-	-	2	-	-	-	1	-	-
19 Prishtinë	82	-	-	4	-	-	5	20	6	12	6	-	4	7	7	-	2	3	1	5
20 Prizren	59	3	-	9	-	-	-	22	2	8	2	-	-	-	-	-	-	3	4	6
21 Skenderaj	8	1	-	2	-	-	1	2	1	-	-	-	-	-	-	-	-	-	1	-
22 Shtime	3	-	-	-	-	-	-	2	-	1	-	-	-	-	-	-	-	-	-	-
23 Shtërpce	3	1	-	1	-	-	-	1	-	-	-	-	-	-	-	-	-	-	-	-
24 Suharekë	16	-	-	-	-	1	3	5	2	3	-	-	-	-	-	-	-	-	-	2
25 Ferizaj	24	-	-	1	-	2	1	9	3	5	-	-	-	2	-	-	-	-	-	1
26 Viti	7	-	-	-	-	1	-	3	-	-	-	-	-	2	-	-	-	-	1	-
27 Vushtrri	20	3	-	1	-	-	3	3	-	4	1	-	-	1	2	-	1	-	-	1
28 Zubin Potok	-	-	-	-	-	-	-	-	-	-	-	-	-	-	-	-	-	-	-	-
29 Zveqan	1	1	-	-	-	-	-	-	-	-	-	-	-	-	-	-	-	-	-	-
30 Malishevë	7	1	-	-	-	-	3	3	-	-	-	-	-	-	-	-	-	-	-	-
31 Juniku	4	-	-	-	-	-	-	2	-	1	-	-	-	-	-	-	-	1	-	-
32 Mamushë	1	-	-	-	-	-	-	-	-	1	-	-	-	-	-	-	-	-	-	-
33 Hani i Elezit	2	-	-	1	-	-	-	-	-	-	-	-	-	-	1	-	-	-	-	-
34 Graçanica	1	-	-	-	-	-	-	1	-	-	-	-	-	-	-	-	-	-	-	-
35 Ranillug	-	-	-	-	-	-	-	-	-	-	-	-	-	-	-	-	-	-	-	-
36 Partesh	-	-	-	-	-	-	-	-	-	-	-	-	-	-	-	-	-	-	-	-
37 Klllokot	1	-	-	-	-	-	-	-	-	-	1	-	-	-	-	-	-	-	-	-
38 Northern Mitro	1	-	-	-	-	-	-	-	-	-	-	-	-	1	-	-	-	-	-	-

# Kosovo Agency of Statistics

## *short description*

**Kosovo Agency of Statistics** is a professional institution which deals with collection, processing and publication of official statistical data. As such acts since 1948 and has passed through several historical stages, structured according to state regulation of those times.

On 2 August 1999, the Agency has resumed his professional work (after nine years of interruption of all statistical series detrimental to the interest of Kosovo), as an independent institution under the Ministry of Public Administration. Since 12.12.2011 the Agency operates in the frames of the Prime Minister's Office. Office is funded by the Kosovo Consolidated Budget, but also by donors for specific projects and for technical professional support.

**Kosovo Agency of Statistics** acts according to the Law No. 04/L-036 which entered into force on 12.12.2011. Strategic development plan 2009-2013 is the middle term implementation for the development of statistical system in correlation with the European Union statistics (EUROSTAT).

**Kosovo Agency of Statistics** has this organizational structure: production departments; (Department of Economic statistics and National Accounts, Department of Agriculture and Environment statistics and Department of Social statistics. **Support Departments;** Department of Methodology and Information Technology, Department of Policy Planning, Coordination and Communication, Department of Census and survey and Department of Administration. **Within the Agency we also established Regional Offices;** Gjakove, Gjilan, Mitrovica, Peja, Prizren, Pristina and Ferizaj

In ASK are employed in total 139 workers, of them 104 (74,8 %) at the headquarters of the Agency, while in the Regional Offices, 35 (25,2%), with qualifying structure, 70,5% with university education to 29,5% with secondary education.

We have professional and technical cooperation with all Ministries of the Government of Kosovo, especially with the Ministry of Economy and Finance, Central Bank of Kosovo, with international institutions, EUROSTAT, International Monetary Fund, World Bank, Sweden's SIDA, DFID, UNFPA, UNDP, UNICEF, and with the statistical institutions of the countries in the region.

**Kosovo Agency of Statistics** almost completely covers the territory of Kosovo, based on the statistical structure of the enumeration areas as the basic unit and sole in the country from which it gets first hand information. All surveys conducted in the field use the extension of the samples in these enumeration areas but also a statistical methodology according to international recommendations. During the collection of statistical data and reports from reporting entities are involved professionals, technicians, administrators, servants of the country offices, field enumerators from regional offices, etc.

We have successfully implemented the project of Population Census, Households and Dwellings in 2011, Census that was not carried out since 1981. Results obtained from the Census will have an important role in compiling the development policies.

**The mission of the Agency;** to meet the needs of users with qualitative statistical data, objective, in time and space so that users have reliable base to conduct regular analysis in the interest of planning and project development at the municipal and country level. To support government institutions, scientific institutes, research academies, businesses in order to provide proper information for decision-makers and other users in Kosovo. Ongoing is preparation for the Census of Agriculture in Kosovo.

- **Address: KOSOVO AGENCY OF STATISTICS**  
Street. "Zenel Salihu", No. 4, 10000 Pristina
- **Telephone:** +381 (0) 38 200 31 129  
CEO: +381 (0) 38 200 31 112
- **Fax::** +381 (0) 38 235 033
- **E-mail:** [economic@rks-gov.net](mailto:economic@rks-gov.net)
- **Ueb-page:** <http://ask.rks-gov.net>