



Republika e Kosovës  
Republika Kosova-Republic of Kosovo  
*Qeveria - Vlada - Government*  
Zyra e Kryeministrit -Ured Premijera -Office of the Prime Minister  
*Agjencia e Statistikave të Kosovës - Agencija za Statistike Kosova - Kosovo Agency of Statistics*

## Series 3: Economic Statistics

### Statistical Repertoire of Economic Enterprises in Kosovo Q2 2019



AGJENCIA E STATISTIKAVE TË KOSOVËS  
AGENCIJA ZA STATISTIKE KOSOVA  
KOSOVO AGENCY OF STATISTICS

## Foreword

Kosovo Agency of Statistics (KAS) has compiled the publication of "**Statistical Repertoire of Enterprises in Kosovo in Q2 2019**", which contains statistical data on new registered businesses at the Kosovo Business Registration Agency (KBRA) from 01.04.2019 until 30.06.2019 (second quarter of 2019).

Statistical Business Register (SBR) is part of KAS which contains basic information for all businesses that exercise economic activity in the territory of the Republic of Kosovo and as such serves for statistics and analysis of demographics of the business, sampling design and for raising the country-level results for all surveys conducted with businesses. SBR also serves as an important source of information for calculating Gross Domestic Product.

SBR is constructed and is continuously updated based on two administrative data sources (KBRA and Tax Administration of Kosovo), as well as from regular statistical surveys conducted by KAS.

Continuous demand for statistical data on enterprises are daily requirements from different users whether they are internal or external users of data from KAS, therefore based on these requirements we have compiled various tabular and graphical data.

We believe that this publication will serve as a useful reference base for all users of KAS statistical data and will serve as useful and relevant economic information for Kosovo.

Comments, remarks, suggestions and proposals regarding this publication are welcome and they can be sent to: [muhamet.kastrati@rks-gov.net](mailto:muhamet.kastrati@rks-gov.net)

Statistical Repertoire of Enterprises in Kosovo is a regular quarterly publication.

*NOTE: From 1 September, 2014, the nomenclature of economic activities is in the new version of NACE Rev. 2, and some of the previously published data have been converted into this version.*

Publication was prepared by:

Ilir T. Berisha - Director of Department,  
Ismajl Sahiti - Head of Division,  
Hysni Elshani - Senior Officer,  
Muhamet Kastrati - IT specialist for SBR,  
Bekim Bojku - Senior Officer,  
Qendresa Shala - Senior Officer,  
Violeta Sylja - Senior Officer,  
Ahmet Cakolli - Design Officer.

July, 2019

Chief Executive Officer, KAS  
Isa Krasniqi

## List of Abbreviations

**KAS** Kosovo Agency of Statistics

**SBR** Statistical Business Register

**KBRA** Kosovo Business Registration Agency

**TAK** Tax Administration of Kosovo

**MTI** Ministry of Trade and Industry

**GDP** Gross Domestic Product

**KPA** Kosovo Privatization Agency

**EC** European Commission

**NEA** Nomenclature of Economic Activities

**NACE Rev. 1** (Nomenclature of Economic Activities EC - 1st version)

**NACE Rev.2** (Nomenclature of Economic Activities EC - 2nd Version)

**SMEs** Small and medium-sized enterprises

**Q1** First quarter

**Q2** Second quarter

**Q3** Third quarter

**Q4** Fourth quarter

## Symbols

- No occurrence

: Data not available

## List of Contents

	Page
1 Characteristics of enterprises registered in Q2 2019.....	5
2 Methodological explanations and definitions.....	6
2.1. Definitions.....	7
2.2. Legal form of organization of business .....	8
3 New and terminated enterprises .....	9
4 Enterprises by economic sector, legal form of organization and the c category of number of employees .....	11
Categorization of enterprises by size and gender .....	12
5 Number of registered enterprises by municipality .....	13
6 Registered individual and non-individual enterprises .....	15
7 Registered enterprises by sector of economic activity and number of employees.....	17
8 Registered enterprises by legal form .....	18
9 Registered enterprises by origin of capital .....	19
10 Terminated enterprises .....	20



## **1 Characteristics of enterprises registered in Q2 2019**

In the second quarter of 2019 (Q2 2019) a total of 2655 enterprises were registered.

Increase by 10.4 % of registered enterprises is observed compared with the previous quarter (Q1 2019). There is an increase by decrease by 1% of registered enterprises compared to the same quarter last year (Q2 2018).

The most favored economic activities during this quarter were: Wholesale and retail trade, repair of motor vehicles, motorcycles with 479 (18.04%), Manufacture with 479 (18.04%), Accommodation and food service activities with 359 (13.52%), Construction with 247 (9.30%), Professional, scientific and technical activities with 236(8.89%), etc.

In the category of 1 to 4 employees there are 2553 enterprises registered in this quarter (96.2 %), with 5 to 9 employees are 71 registered enterprises (2.7%), 10 to 19 employees are 21 registered enterprises (0.8%), 20 up to 249 employees with 10 registered enterprises (0.4%) and in the category of 250 or more employees there is an enterprise registered during this quarter.

Regarding the geographic extent of enterprises registered at municipal level, as in every quarter prevails the municipality of Prishtina with 749 registered enterprises (28.2%), Prizren with 211 registered enterprises (7.9%), Ferizaj with 188 registered enterprises (7.1%), Peja with 144 registered enterprises (5.4%), and Fushe Kosova with 112 registered enterprises (4.2%), while other municipalities have smaller number of enterprises registered in this quarter.

## 2 Methodological explanations and definitions

Statistical Business Register (SBR) serves for statistical purposes and should clearly identify the units in order to:

- Enable obtaining the information about them via administrative sources.
- Enable the preparation of samplings; coordination of surveys and raising their results at the country level;
- Enable demographic analysis of enterprises and related entities.
- Provide input data for calculating Gross Domestic Product (GDP).

Statistical Business Register (SBR) - **Includes** all legal entities (enterprises) that exercise economic activity within the territory of Kosovo.

**Does not include:** Public administration, Non-profit Organizations and International Organizations.

**Sources for updating the variables of SBR are:**

- Administrative
  - o Information from the Kosovo Business Registration Agency
  - o Information from the Tax Administration of Kosovo
- Statistical
  - o Structural Business Survey
  - o Short-term Statistical Surveys
  - o Survey about Hotel Services
  - o Collection of Producer Prices
  - o Collection of Import Prices

**Main variables in the SBR are grouped by:**

- **Identification variables**
  - o Number of business registration (NBR), name, legal form, ownership, address, communication (phone, fax, email, etc.)
- **Stratified variables**
  - o Main economic activity (NACE Rev.2), size by employees
- **Demographic variables**
  - o Date of registration, date of termination/closure
- **Updated variables are**
  - o Status of activity (active or inactive)
  - o Economic activity of the enterprise
  - o Size by employees
  - o Address, and communication variables (telephone, fax, mobile, e-mail)

## 2.1. Definitions

Nomenclature of Economic Activities (NACE) is a four-digit level classification of economic activity exercised in different subjects.

This nomenclature is translation and adaptation of the European Classification of Economic Activities (NACE Rev. 2. in English).

The use of this nomenclature is mandatory since 1 September, 2014 by the institutions of the Republic of Kosovo and based on the regulation No. 11/2013 adopted by the Government of the Republic of Kosovo.

The structure of economic activities NACE Rev. 2 consists of 21 sections presented below labelled with letters from A to U.

- A. Agriculture, forestry and fishing
- B. Mining and quarrying
- C. Manufacturing
- D. Electricity, gas, steam and air conditioning supply
- E. Water supply, sewerage, waste management and remediation activities
- F. Construction
- G. Wholesale and retail trade, repair of motor vehicles and motorcycles
- H. Transportation and storage
- I. Accommodation and food service activities
- J. Information and communication
- K. Financial and insurance activities
- L. Real estate activities
- M. Professional, scientific and technical activities
- N. Administrative and support service activities
- O. Public administration and defense
- P. Education
- Q. Human health and social work activities
- R. Arts, entertainment and recreation
- S. Other services activities
- T. Activities of households as employers
- U. Activities of extraterritorial organizations and bodies

Classes of economic activities according to the new nomenclature **NACE Rev. 2** are total of 615 of them, which are encoded by four digit code ranging from 0111 to 9900.



## 2.2. Legal form of organization of business

Definitions applied to legal forms of enterprises under Regulation 2001/16 and Law No. 02/L123 on Business Organizations which are applied when registering in the KBRA, are as follows:

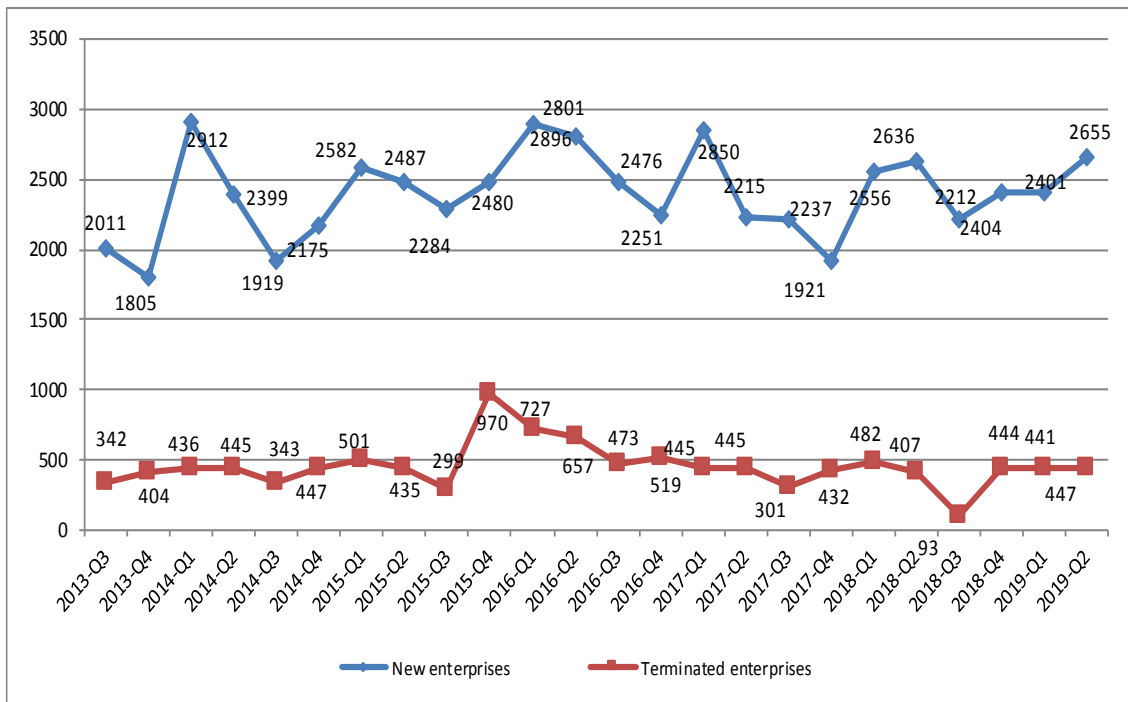
1. **Individual business** - is the **only natural person** who performs economic activities for the purpose of profit and who is registered in the KBRA. In the individual business the owner has unlimited liability for all debts of the company. The company has an official name or includes the surname of the lawful owner
2. **General partnership** - The general partnership, all partners jointly respond without restriction for partnership debts. A partnership has a label, which may include the name of one or more partners.
3. **Limited partnership** - In limited partnerships, except "unlimited" partners (partners responsible jointly without limitation for the debts of the company) also participate "limited" partners or those responsible for the company's obligations to the limit of the value of their founding contributions / capital.
4. Limited liability enterprises - Limited liability enterprises are those enterprises that are established by one or several founders, who answer only to the limit of the value of their contribution. Limited liability enterprise has a label, which may include the name of one or more partners.
5. Shareholders – Shareholders are those whose capital is divided into shares and shareholders respond only to the limit of the value of their contribution. Shareholder enterprise (a joint stock enterprises) can be established by having one or more shareholders.
6. **Foreign business organization** - A foreign company is a business and from the moment of registration is considered a branch in Kosovo that has no identity of legal person. After its registration it shall enjoy all the rights and obligations established under the applicable law.
7. **Social enterprise** - Social enterprise means a legal person that most assets and capital are socially owned. These enterprises until the privatization are monitored and registered by the Kosovo Privatization Agency under the Law on Commercial Companies No.02/L-123.
8. **Public enterprise** - Public enterprise is the enterprise which carries out activities of general interest which is established by the state. Public enterprise is monitored by the government and organized as a joint stock company in accordance with applicable law on Commercial Companies. All ownership interests in a public company will be represented by shares and these shares will be registered.
9. **Agricultural cooperative** - Agricultural cooperative is a business organization created by natural or legal persons who must be farmers who contribute with their private property to the share of capital.
10. **Enterprises under the jurisdiction of the KPA** - are ex-social owned enterprises which are now managed and supervised by the KPA (Kosovo Privatization Agency).

### 3 New and terminated enterprises

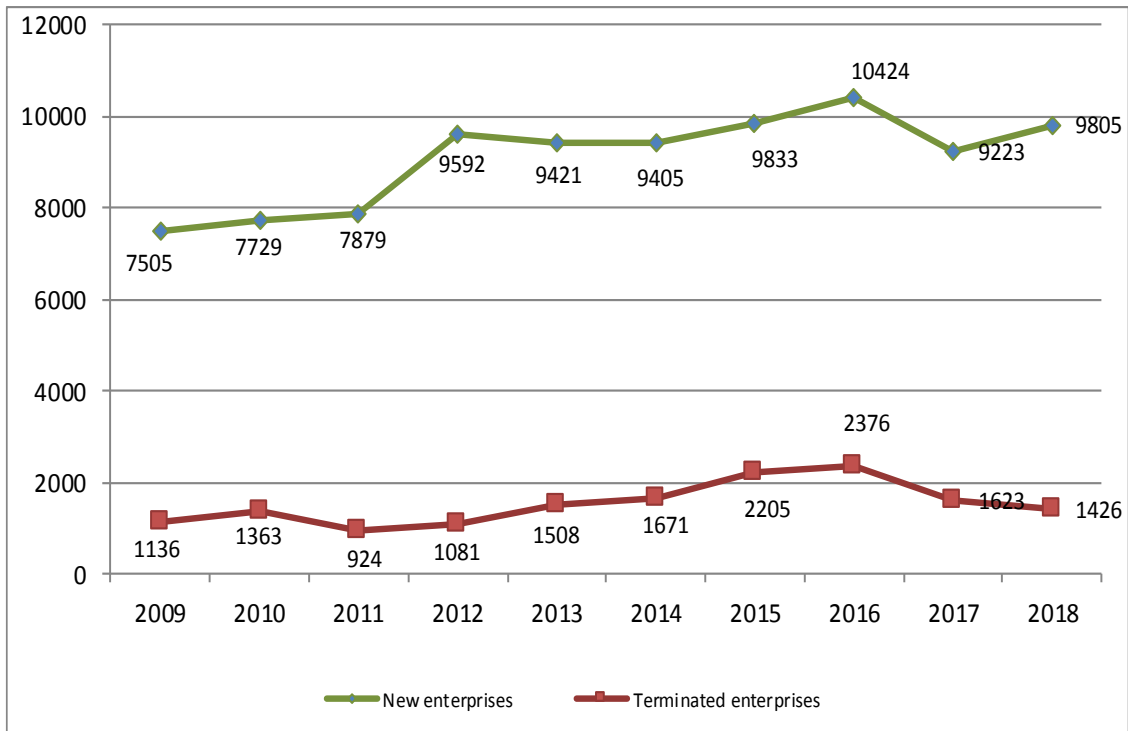
**Table 1. Number of registered enterprises by quarter and sector of economic activity**

Period		Sector of economic activity																		
		A	B	C	D	E	F	G	H	I	J	K	L	M	N	O	P	Q	R	S
Quarter	Total	Agriculture, forestry and fishing	Mining and quarrying	Manufacturing	Electricity, gas, steam and air conditioning supply	Water supply, sewage, waste management and remediation activities	Construction	Wholesale and retail trade, repair of motor vehicles and motorcycles	Transportation and storage	Accommodation and food service activities	Information and communication	Financial and insurance activities	Real estate activities	Professional, scientific and technical activities	Administrative and support service activities	Public administration and protection: compulsory social protection	Education	Human health and social work activities	Arts, entertainment and recreation	Other service activities
2013 - Q1	<b>3100</b>	301	10	299	9	19	337	867	201	264	104	6	135	169	60	9	32	48	54	176
2013 - Q2	<b>2504</b>	142	7	258	2	14	227	759	107	246	101	4	95	162	65	9	28	43	52	183
2013 - Q3	<b>2011</b>	122	7	163	6	11	201	565	108	240	82	8	15	119	53	6	20	48	63	174
2013 - Q4	<b>1805</b>	188	5	152	5	6	178	543	109	161	70	2	12	135	36	9	18	34	62	80
2013 Total	<b>9420</b>	<b>753</b>	<b>29</b>	<b>872</b>	<b>22</b>	<b>50</b>	<b>943</b>	<b>2734</b>	<b>525</b>	<b>911</b>	<b>357</b>	<b>20</b>	<b>257</b>	<b>585</b>	<b>214</b>	<b>33</b>	<b>98</b>	<b>173</b>	<b>231</b>	<b>613</b>
2014 - Q1	<b>2911</b>	205	10	283	4	13	284	887	181	293	121	12	21	180	77	12	33	50	88	157
2014 - Q2	<b>2399</b>	186	9	283	3	16	207	704	99	282	95	8	10	146	61	11	20	39	55	165
2014 - Q3	<b>1919</b>	115	7	196	3	13	146	574	111	237	61	11	7	97	49	2	18	33	60	179
2014 - Q4	<b>2175</b>	168	6	216	14	9	166	649	143	222	80	12	21	147	65	17	19	51	50	120
2014 Total	<b>9404</b>	<b>674</b>	<b>32</b>	<b>978</b>	<b>24</b>	<b>51</b>	<b>803</b>	<b>2814</b>	<b>534</b>	<b>1034</b>	<b>357</b>	<b>43</b>	<b>59</b>	<b>570</b>	<b>252</b>	<b>42</b>	<b>90</b>	<b>173</b>	<b>253</b>	<b>621</b>
2015 - Q1	<b>2582</b>	255	7	276	8	12	237	784	143	253	104	12	15	144	80	6	20	36	57	133
2015 - Q2	<b>2487</b>	212	12	261	5	13	193	751	142	263	98	15	15	139	76	10	29	67	60	126
2015 - Q3	<b>2284</b>	208	8	239	4	8	160	622	108	256	86	43	19	123	66	3	25	49	68	189
2015 - Q4	<b>2480</b>	270	5	271	13	15	163	746	131	246	80	25	25	175	74	6	35	35	58	107
2015 Total	<b>9833</b>	<b>945</b>	<b>32</b>	<b>1047</b>	<b>30</b>	<b>48</b>	<b>753</b>	<b>2903</b>	<b>524</b>	<b>1018</b>	<b>368</b>	<b>95</b>	<b>74</b>	<b>581</b>	<b>296</b>	<b>25</b>	<b>109</b>	<b>187</b>	<b>243</b>	<b>555</b>
2016 - Q1	<b>2896</b>	261	16	343	12	17	254	820	151	249	108	68	14	183	82	8	40	63	73	134
2016 - Q2	<b>2801</b>	223	6	334	11	13	202	779	150	326	114	34	17	170	101	6	42	60	51	162
2016 - Q3	<b>2476</b>	372	6	258	9	26	194	552	125	232	105	28	15	122	81	8	31	46	77	189
2016 - Q4	<b>2251</b>	234	6	246	10	9	177	587	102	210	96	48	12	179	89	2	28	35	70	111
2016 Total	<b>10424</b>	<b>1090</b>	<b>34</b>	<b>1181</b>	<b>42</b>	<b>65</b>	<b>827</b>	<b>2738</b>	<b>528</b>	<b>1017</b>	<b>423</b>	<b>178</b>	<b>58</b>	<b>654</b>	<b>353</b>	<b>24</b>	<b>141</b>	<b>204</b>	<b>271</b>	<b>596</b>
2017 - Q1	<b>2850</b>	350	12	265	10	11	269	799	115	261	118	23	23	188	110	6	39	50	76	125
2017 - Q2	<b>2237</b>	96	11	234	6	8	202	623	84	278	100	30	16	189	110	1	15	50	52	132
2017 - Q3	<b>2215</b>	245	6	225	5	9	188	529	78	208	116	20	17	186	91	6	30	45	51	160
2017 - Q4	<b>1921</b>	131	6	166	17	10	180	511	70	183	107	37	9	171	90	5	26	46	52	104
2017 Total	<b>9223</b>	<b>822</b>	<b>35</b>	<b>890</b>	<b>38</b>	<b>38</b>	<b>839</b>	<b>2462</b>	<b>347</b>	<b>930</b>	<b>441</b>	<b>110</b>	<b>65</b>	<b>734</b>	<b>401</b>	<b>18</b>	<b>110</b>	<b>191</b>	<b>231</b>	<b>521</b>
2018 - Q1	<b>2556</b>	127	7	316	7	13	266	722	94	247	114	23	14	204	111	3	29	59	69	131
2018 - Q2	<b>2636</b>	198	10	299	6	9	260	723	93	277	114	24	15	170	125	9	20	62	86	136
2018 - Q3	<b>2212</b>	145	8	214	6	9	189	519	65	212	149	15	19	182	78	4	33	54	72	239
2018 - Q4	<b>2401</b>	156	7	280	15	10	244	561	57	252	154	22	14	212	125	2	49	45	45	151
2018 Total	<b>9805</b>	<b>626</b>	<b>32</b>	<b>1109</b>	<b>34</b>	<b>41</b>	<b>959</b>	<b>2525</b>	<b>309</b>	<b>988</b>	<b>531</b>	<b>84</b>	<b>62</b>	<b>768</b>	<b>439</b>	<b>18</b>	<b>131</b>	<b>220</b>	<b>272</b>	<b>657</b>
2019 - Q1	<b>2404</b>	121	15	277	7	9	232	596	80	240	152	19	22	253	130	5	38	52	55	101
2019 - Q2	<b>2655</b>	0	2	479	5	9	247	590	76	359	149	17	18	236	151	5	36	59	50	167

**Graph 1. Number of registered and terminated enterprises by quarter**



**Graph 2: Number of registered and terminated enterprises by year**

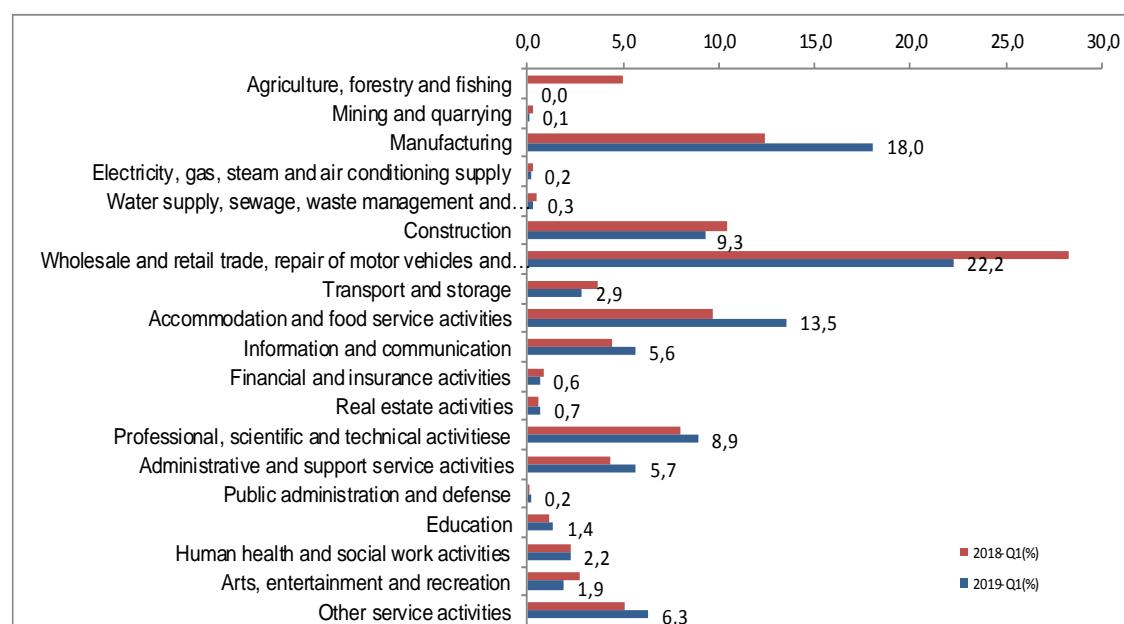


## 4 Enterprises by economic sector, legal form of organization and the category of number of employees

**Table 2. Number of registered enterprises by sector of economic activity, type and number of employees in Q2 2019**

Seksionet e veprimtarive ekonomike	Total	Category of number of employees					
		individual businesses			non-individual businesses		
		Total	1-4	5 +	Total	1-4	5 +
<b>Total</b>	<b>2655</b>	<b>1135</b>	<b>1130</b>	<b>5</b>	<b>1520</b>	<b>1423</b>	<b>97</b>
A Agriculture, forestry and fishing	0	-	-	-	-	-	-
B Mining and quarrying	2	-	-	-	2	2	-
C Manufacturing	479	265	265	-	214	204	10
D Electricity, gas, steam and air conditioning supply	5	-	-	-	5	4	1
E Water supply, sewage, waste management and remediation activities	9	2	2	-	7	5	2
F Construction	247	65	62	3	182	160	22
G Wholesale and retail trade, repair of motor vehicles and motorcycles	590	209	208	1	381	361	20
H Transport and storage	76	50	50	-	26	25	1
I Accommodation and food service activities	359	183	182	1	176	160	16
J Information and communication	149	48	48	-	101	96	5
K Financial and insurance activities	17	6	6	-	11	11	-
L Real estate activities	18	2	2	-	16	15	1
M Professional, scientific and technical activities	236	78	78	-	158	152	6
N Administrative and support service activities	151	41	41	-	110	106	4
O Public administration and defense	5	1	1	-	4	4	-
P Education	36	14	14	-	22	21	1
Q Human health and social work activities	59	19	19	-	40	37	3
R Arts, entertainment and recreation	50	33	33	-	17	16	1
S Other service activities	167	119	119	-	48	44	4

**Graph 3. Enterprises registered by economic sector in Q2 2019**

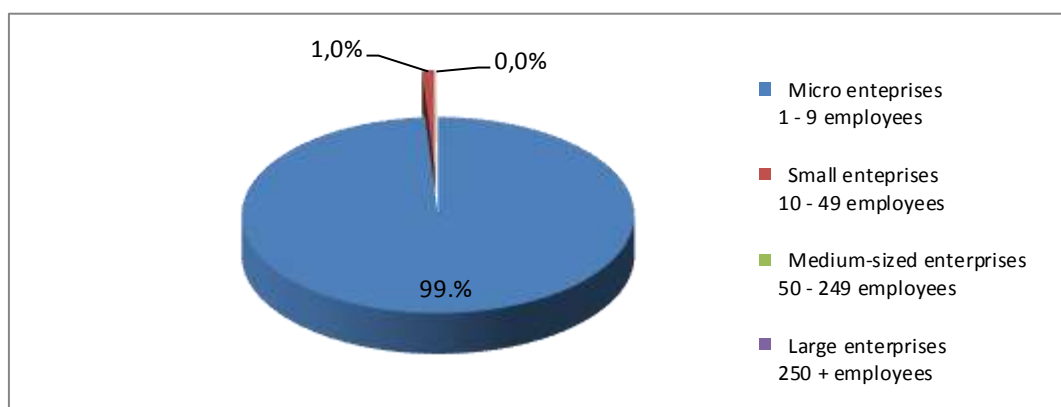


## Categorization of enterprises by size and gender

**Table 3. The number of SMEs in Q2 2019**

Classification	Number of employees	Number of businesses	%
Micro enterprises	1 - 9 employees	2627	98,9%
Small enterprises	10 - 49 employees	27	1,0%
Medium-sized enterprises	50 - 249 employees	1	0,0%
Large enterprises	250 + employees	0	-
<b>Total</b>		<b>2655</b>	<b>100,0%</b>

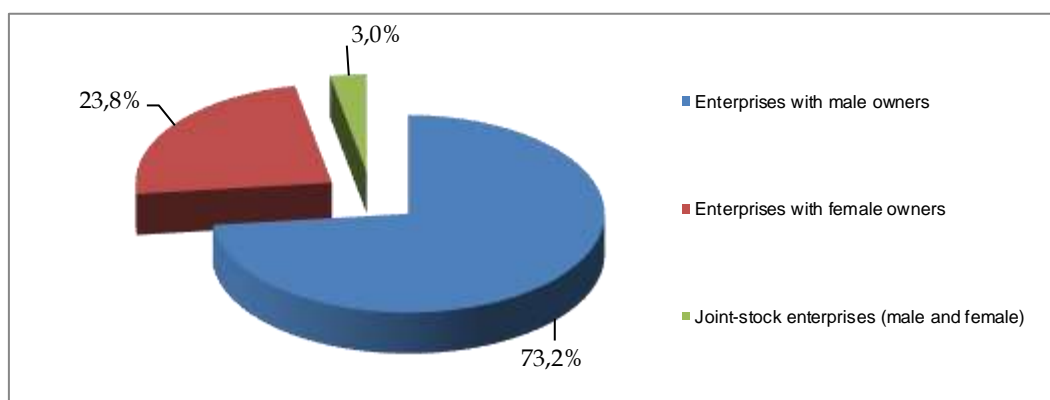
**Graph 4. Structure of enterprises by size in Q2 2019**



**Table 5. Structure of enterprises by gender of the owner in Q2 2019**

Structure of registered enterprises according to gender of the owners						
Total	Enterprises with male owners		Enterprises with female owners		Enterprises with mixed owners (male and female)	
2655	1943	73,2%	632	23,8%	80	3,0%

**Graph 6. Presentation of enterprises by gender of the owner in Q2 2019**

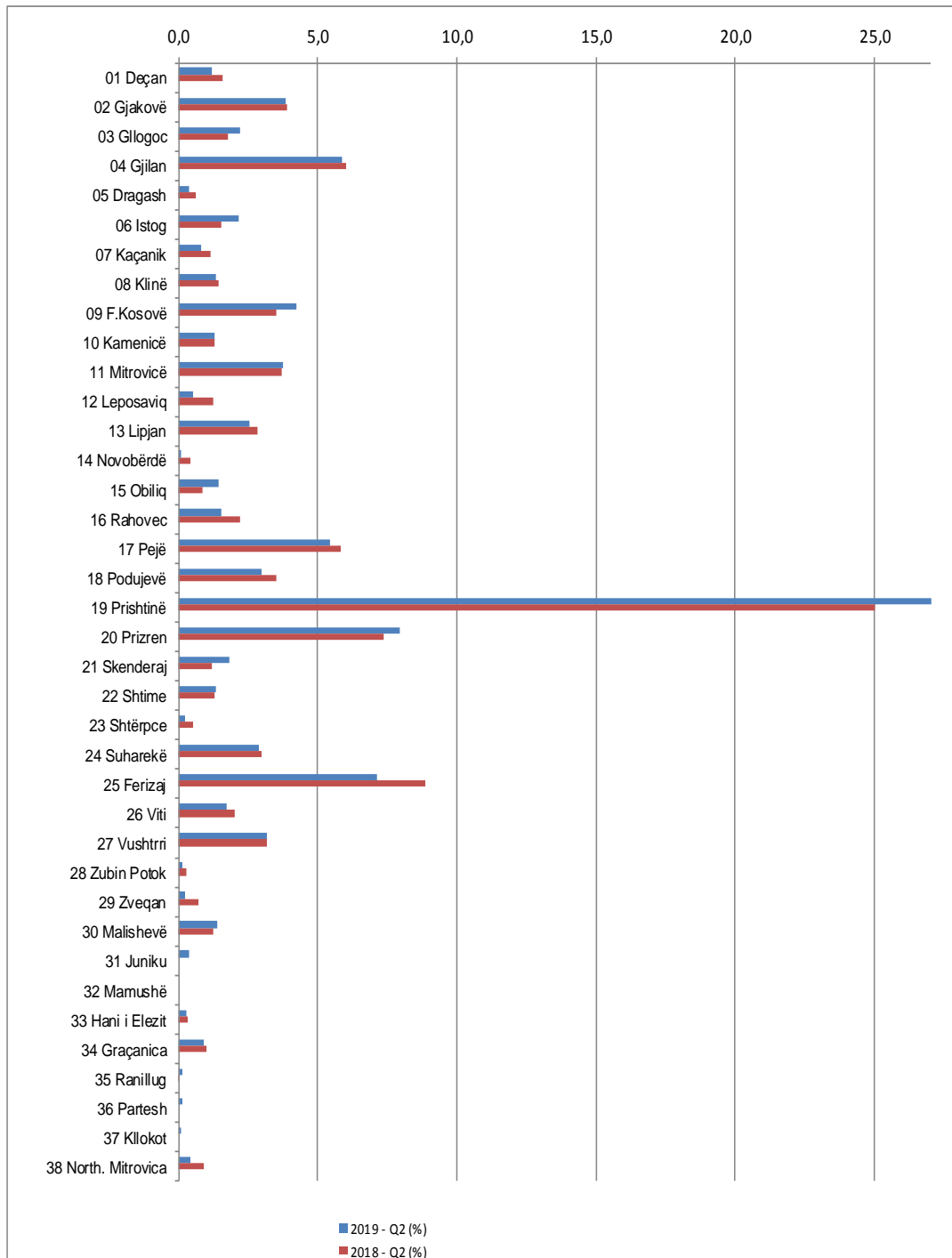


## 5 Number of registered enterprises by municipality

**Table 4. Number of registered enterprises by municipality and sector of economic activity in Q2 2019**

Municipality	Sector of economic activity																			
	Agriculture, forestry and fishing	Mining and quarrying	Manufacturing	Electricity, gas, steam and air conditioning supply	Water supply, sewage, waste management and remediation activities	Construction	Wholesale and retail trade, repair of motor vehicles and motorcycles	Transportation and storage	Accommodation and food service activities	Information and communication	Financial and insurance activities	Real estate activities	Professional, scientific and technical activities	Administrative and support service activities	Public administration and protection: compulsory social protection	Education	Human health and social work activities	Arts, entertainment and recreation	Other service activities	
Code and name	Total	A	B	C	D	E	F	G	H	I	J	K	L	M	N	O	P	Q	R	S
	<b>2.655</b>	-	<b>2</b>	<b>479</b>	<b>5</b>	<b>9</b>	<b>247</b>	<b>590</b>	<b>76</b>	<b>359</b>	<b>149</b>	<b>17</b>	<b>18</b>	<b>236</b>	<b>151</b>	<b>5</b>	<b>36</b>	<b>59</b>	<b>50</b>	<b>167</b>
01 Deçan	32	-	-	5	-	3	3	7	1	7	-	-	1	2	3	-	-	-	-	-
02 Gjakovë	102	-	-	18	-	1	4	26	-	19	3	-	-	9	8	-	-	3	6	5
03 Glogoc	58	-	-	13	-	1	10	12	-	10	3	-	-	4	3	-	-	-	-	1
04 Gjilan	156	-	-	23	2	-	20	29	15	17	6	3	2	13	8	-	-	7	4	7
05 Dragash	10	-	-	2	-	-	-	4	-	3	-	-	-	-	1	-	-	-	-	-
06 Istog	57	-	-	30	-	-	6	4	-	9	-	-	-	-	3	-	-	1	4	-
07 Kaçanik	21	-	-	6	-	-	3	4	-	-	-	-	-	2	3	-	1	-	-	2
08 Klinë	36	-	-	11	-	-	6	6	1	5	1	-	-	-	4	-	-	-	1	1
09 F.Kosovë	112	-	1	16	1	-	10	18	3	15	10	-	2	5	11	-	2	6	1	11
10 Kamenicë	34	-	-	10	-	-	4	10	2	4	1	1	-	1	-	-	-	-	-	1
11 Mitrovicë	99	-	-	16	-	-	8	17	3	15	5	2	-	7	9	-	1	3	3	10
12 Leposaviq	14	-	-	9	-	-	1	2	-	-	1	-	-	-	-	-	-	-	-	1
13 Lipjan	68	-	-	15	-	-	6	18	2	11	-	1	-	6	4	-	2	1	1	1
14 Novobërdë	2	-	-	2	-	-	-	-	-	-	-	-	-	-	-	-	-	-	-	-
15 Obiliq	38	-	-	9	-	-	3	12	1	4	2	-	-	2	-	-	-	2	2	1
16 Rahovec	40	-	-	11	-	-	-	15	-	4	1	-	-	2	2	-	-	-	-	5
17 Pejë	144	-	1	22	-	-	8	30	11	25	10	-	3	16	8	-	1	1	2	6
18 Podujevë	79	-	-	19	-	-	13	16	3	12	2	-	-	1	3	-	-	1	6	3
19 Prishtinë	749	-	-	62	1	3	45	157	13	105	78	7	7	124	45	4	15	18	12	53
20 Prizren	211	-	-	42	-	-	14	48	2	29	8	-	-	14	9	-	6	5	3	31
21 Skenderaj	48	-	-	25	-	-	7	10	1	2	1	-	-	1	1	-	-	-	-	-
22 Shtime	36	-	-	7	-	-	8	8	2	6	-	1	-	-	1	-	1	-	-	2
23 Shtërpce	6	-	-	3	-	-	2	-	-	-	-	-	-	-	1	-	-	-	-	-
24 Suharekë	76	-	-	15	-	-	14	20	3	9	2	1	-	7	-	-	1	1	2	1
25 Ferizaj	189	-	-	35	1	1	25	52	3	19	11	-	2	8	9	-	3	4	1	15
26 Viti	46	-	-	13	-	-	6	9	1	6	1	-	-	1	4	-	1	2	-	2
27 Vushtrri	84	-	-	19	-	-	9	19	3	10	1	1	-	7	6	1	2	1	1	4
28 Zubin Potok	4	-	-	2	-	-	-	-	-	1	-	-	-	-	-	-	-	-	-	1
29 Zveçan	6	-	-	2	-	-	1	1	-	2	-	-	-	-	-	-	-	-	-	-
30 Malishevë	37	-	-	9	-	-	6	13	-	3	2	-	-	2	1	-	-	1	-	-
31 Juniku	10	-	-	1	-	-	2	1	2	2	-	-	-	0	me	1	-	-	1	-
32 Mamushë	-	-	-	0	0	0	0	0	0	0	0	0	0	0	0	0	0	0	0	0
33 Hani i Elezit	7	-	-	-	-	-	1	3	1	-	-	-	-	1	-	-	-	-	-	1
34 Graçanica	24	-	-	1	-	-	-	13	1	4	-	-	1	-	2	-	-	1	-	1
35 Ranillug	4	-	-	2	-	-	1	1	-	-	-	-	-	-	-	-	-	-	-	-
36 Partesh	3	-	-	2	-	-	-	-	-	-	-	-	-	-	-	-	-	-	-	1
37 Kllokot	2	-	-	-	-	-	-	-	-	1	-	-	-	-	1	-	-	-	-	-
38 North. Mitrovica	11	-	-	2	-	-	1	5	2	-	-	-	-	1	-	-	-	-	-	-

**Graph 7. Structure of registered enterprises by municipality in Q2 2019**



## 6 Registered individual and non-individual enterprises

**Table 5. Number of registered individual enterprises by municipality and sector of economic activity in Q2 2019**

Municipality	Sector of economic activity																			
	A	B	C	D	E	F	G	H	I	J	K	L	M	N	O	P	Q	R	S	
<b>Total</b>	<b>1.135</b>	-	-	<b>265</b>	-	<b>2</b>	<b>65</b>	<b>209</b>	<b>50</b>	<b>183</b>	<b>48</b>	<b>6</b>	<b>2</b>	<b>78</b>	<b>41</b>	<b>1</b>	<b>14</b>	<b>19</b>	<b>33</b>	<b>119</b>
01 Deçan	14	-	-	1	-	1	1	4	1	5	-	-	-	-	1	-	-	-	-	-
02 Gjakovë	61	-	-	9	-	1	2	12	-	15	-	-	-	5	3	-	-	3	6	5
03 Glogoc	34	-	-	6	-	-	7	9	-	6	2	-	-	3	-	-	-	-	-	1
04 Gjilan	62	-	-	11	-	-	-	9	11	7	1	2	-	5	3	-	-	4	3	6
05 Dragash	6	-	-	1	-	-	-	3	-	2	-	-	-	-	-	-	-	-	-	-
06 Istog	32	-	-	20	-	-	1	-	-	5	-	-	-	-	1	-	-	1	4	-
07 Kaçanik	13	-	-	4	-	-	1	3	-	-	-	-	-	1	1	-	1	-	-	2
08 Klinë	9	-	-	3	-	-	-	3	1	2	-	-	-	-	-	-	-	-	-	-
09 F.Kosovë	42	-	-	9	-	-	3	3	2	8	3	-	-	-	4	-	-	2	-	8
10 Kamenicë	25	-	-	9	-	-	4	5	2	3	-	-	-	1	-	-	-	-	-	1
11 Mitrovicë	51	-	-	9	-	-	1	9	3	8	2	1	-	3	2	-	-	2	3	8
12 Leposaviq	9	-	-	6	-	-	1	1	-	-	-	-	-	-	-	-	-	-	-	1
13 Lipjan	31	-	-	10	-	-	3	7	1	6	-	1	-	2	-	-	-	-	-	1
14 Novobërdë	1	-	-	1	-	-	-	-	-	-	-	-	-	-	-	-	-	-	-	-
15 Obiliq	27	-	-	7	-	-	2	7	-	4	1	-	-	2	-	-	-	1	2	1
16 Rahovec	24	-	-	9	-	-	-	9	-	1	-	-	-	1	-	-	-	-	-	4
17 Pejë	67	-	-	7	-	-	5	10	9	18	1	-	2	7	2	-	-	-	1	5
18 Podujevë	41	-	-	12	-	-	4	5	1	12	1	-	-	1	1	-	-	-	2	2
19 Prishtinë	170	-	-	19	-	-	3	22	7	33	25	-	-	27	5	-	3	-	6	20
20 Prizren	137	-	-	31	-	-	2	25	1	21	5	-	-	8	5	-	4	2	2	31
21 Skenderaj	31	-	-	15	-	-	4	8	1	1	1	-	-	1	-	-	-	-	-	-
22 Shtime	21	-	-	4	-	-	5	5	1	3	-	1	-	-	-	-	1	-	-	1
23 Shtërpce	4	-	-	2	-	-	2	-	-	-	-	-	-	-	-	-	-	-	-	-
24 Suharekë	30	-	-	8	-	-	1	7	-	4	-	1	-	4	-	-	1	1	2	1
25 Ferizaj	69	-	-	17	-	-	6	18	2	4	3	-	-	1	2	-	3	1	1	11
26 Viti	26	-	-	9	-	-	4	1	1	2	1	-	-	1	3	-	1	1	-	2
27 Vushtrri	43	-	-	12	-	-	1	8	3	3	1	-	-	4	5	1	-	-	1	4
28 Zubin Potok	4	-	-	2	-	-	-	-	-	1	-	-	-	-	-	-	-	-	-	1
29 Zveqan	3	-	-	1	-	-	-	-	-	2	-	-	-	-	-	-	-	-	-	-
30 Malishevë	15	-	-	3	-	-	1	6	-	2	1	-	-	1	1	-	-	-	-	-
31 Juniku	6	-	-	1	-	-	-	1	1	2	-	-	-	-	-	-	-	1	-	-
32 Mamushë	-	-	-	-	-	-	-	-	-	-	-	-	-	-	-	-	-	-	-	-
33 Hani i Elezit	1	-	-	-	-	-	-	-	-	-	-	-	-	-	-	-	-	-	-	1
34 Graçanicë	13	-	-	1	-	-	-	6	1	3	-	-	-	-	1	-	-	-	-	1
35 Ranillug	4	-	-	2	-	-	1	1	-	-	-	-	-	-	-	-	-	-	-	-
36 Partesh	3	-	-	2	-	-	-	-	-	-	-	-	-	-	-	-	-	-	-	1
37 Klokot	1	-	-	-	-	-	-	-	-	-	-	-	-	-	1	-	-	-	-	-
38 North. Mitrovica	5	-	-	2	-	-	-	2	1	-	-	-	-	-	-	-	-	-	-	-



**Table 6. Number of registered non-individual enterprises by municipality and sector of economic activity in Q2 2019**

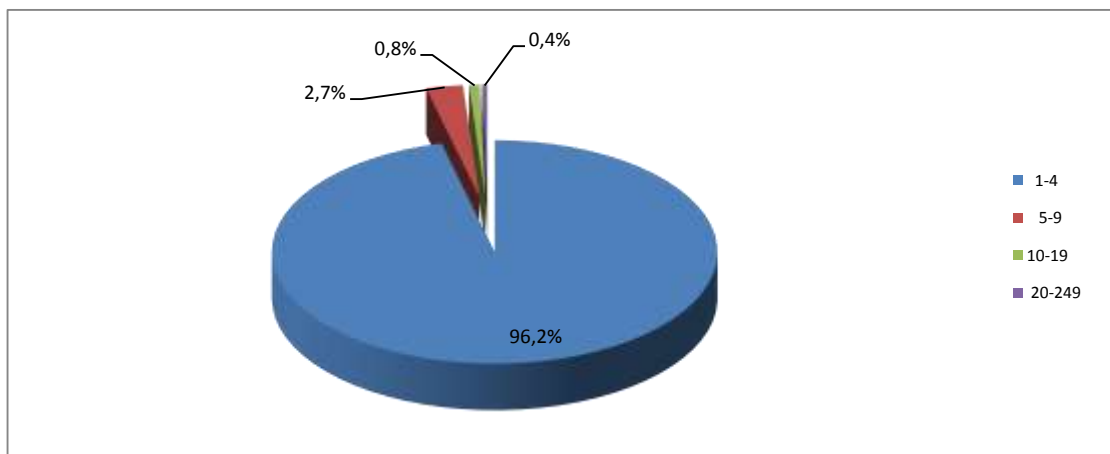
Municipality		Sector of economic activity																			
		Agriculture, forestry and fishing	Mining and quarrying	Manufacturing	Electricity, gas, steam and air conditioning supply	Water supply, sewage, waste management and remediation activities	Construction	Wholesale and retail trade, repair of motor vehicles and motorcycles	Transportation and storage	Accommodation and food service activities	Information and communication	Financial and insurance activities	Real estate activities	Professional, scientific and technical activities	Administrative and support service activities	Public administration and protection: compulsory social protection	Education	Human health and social work activities	Arts, entertainment and recreation	Other service activities	
Code and name	Total	A	B	C	D	E	F	G	H	I	J	K	L	M	N	O	P	Q	R	S	
	1.520	-	2	214	5	7	182	381	26	176	101	11	16	158	110	4	22	40	17	48	
01 Deçan	18	-	-	4	-	2	2	3	-	2	-	-	1	2	2	-	-	-	-	-	-
02 Gjakovë	41	-	-	9	-	-	2	14	-	4	3	-	-	4	5	-	-	-	-	-	-
03 Gillogoc	24	-	-	7	-	1	3	3	-	4	1	-	-	1	3	-	-	-	1	-	-
04 Gjilan	94	-	-	12	2	-	20	20	4	10	5	1	2	8	5	-	-	3	1	1	1
05 Dragash	4	-	-	1	-	-	-	1	-	1	-	-	-	-	1	-	-	-	-	-	-
06 Istog	25	-	-	10	-	-	5	4	-	4	-	-	-	-	2	-	-	-	-	-	-
07 Kaçanik	8	-	-	2	-	-	2	1	-	-	-	-	-	1	2	-	-	-	-	-	-
08 Klinë	27	-	-	8	-	-	6	3	-	3	1	-	-	-	4	-	-	-	1	1	1
09 F.Kosovë	70	-	1	7	1	-	7	15	1	7	7	-	2	5	7	-	2	4	1	3	3
10 Kamenicë	9	-	-	1	-	-	-	5	-	1	1	1	-	-	-	-	-	-	-	-	-
11 Mitrovicë	48	-	-	7	-	-	7	8	-	7	3	1	-	4	7	-	1	1	-	2	2
12 Leposaviq	5	-	-	3	-	-	-	1	-	-	1	-	-	-	-	-	-	-	-	-	-
13 Lipjan	37	-	-	5	-	-	3	11	1	5	-	-	-	4	4	-	2	1	1	-	-
14 Novobërdë	1	-	-	1	-	-	-	-	-	-	-	-	-	-	-	-	-	-	-	-	-
15 Obiliq	11	-	-	2	-	-	1	5	1	-	1	-	-	-	-	-	-	1	-	-	-
16 Rahovec	16	-	-	2	-	-	-	6	-	3	1	-	-	1	2	-	-	-	-	-	1
17 Pejë	77	-	1	15	-	-	3	20	2	7	9	-	1	9	6	-	1	1	1	1	1
18 Podujevë	38	-	-	7	-	-	9	11	2	-	1	-	-	-	2	-	-	1	4	1	1
19 Prishtinë	579	-	-	43	1	3	42	135	6	72	53	7	7	97	40	4	12	18	6	33	33
20 Prizren	74	-	-	11	-	-	12	23	1	8	3	-	-	6	4	-	2	3	1	-	-
21 Skenderaj	17	-	-	10	-	-	3	2	-	1	-	-	-	-	1	-	-	-	-	-	-
22 Shtime	15	-	-	3	-	-	3	3	1	3	-	-	-	-	1	-	-	-	-	-	1
23 Shtërpçe	2	-	-	1	-	-	-	-	-	-	-	-	-	-	1	-	-	-	-	-	-
24 Suharekë	46	-	-	7	-	-	13	13	3	5	2	-	-	3	-	-	-	-	-	-	-
25 Ferizaj	120	-	-	18	1	1	19	34	1	15	8	-	2	7	7	-	-	3	-	4	4
26 Viti	20	-	-	4	-	-	2	8	-	4	-	-	-	-	1	-	-	1	-	-	-
27 Vushtrri	41	-	-	7	-	-	8	11	-	7	-	1	-	3	1	-	2	1	-	-	-
28 Zubin Potok	-	-	-	-	-	-	-	-	-	-	-	-	-	-	-	-	-	-	-	-	-
29 Zveçan	3	-	-	1	-	-	1	1	-	-	-	-	-	-	-	-	-	-	-	-	-
30 Malishevë	22	-	-	6	-	-	5	7	-	1	1	-	-	1	-	-	-	1	-	-	-
31 Juniku	4	-	-	-	-	-	2	-	1	-	-	-	-	-	1	-	-	-	-	-	-
32 Mamushë	-	-	-	-	-	-	-	-	-	-	-	-	-	-	-	-	-	-	-	-	-
33 Hani i Elezit	6	-	-	-	-	-	1	3	1	-	-	-	-	1	-	-	-	-	-	-	-
34 Graçanicë	11	-	-	-	-	-	-	7	-	1	-	-	1	-	1	-	-	1	-	-	-
35 Ranillug	-	-	-	-	-	-	-	-	-	-	-	-	-	-	-	-	-	-	-	-	-
36 Partesh	-	-	-	-	-	-	-	-	-	-	-	-	-	-	-	-	-	-	-	-	-
37 Killokot	1	-	-	-	-	-	-	-	-	1	-	-	-	-	-	-	-	-	-	-	-
38 North. Mitrovica	6	-	-	-	-	-	1	3	1	-	-	-	-	1	-	-	-	-	-	-	-

## 7 Registered enterprises by sector of economic activity and number of employees

**Table 7. Number of registered enterprises by sector of economic activity and number of employees in Q2 2019**

Sector of economic activity	Total	Category of number of employees				
		1-4	5-9	10-19	20-249	250 +
<b>Total</b>	<b>2655</b>	<b>2553</b>	<b>71</b>	<b>21</b>	<b>10</b>	<b>0</b>
A Agriculture, forestry and fishing	0	-	-	-	-	-
B Mining and quarrying	2	2	-	-	-	-
C Manufacturing	479	469	9	1	-	-
D Electricity, gas, steam and air conditioning supply	5	4	1	-	-	-
E Water supply, sewage, waste management and remediation activities	9	7	-	2	-	-
F Construction	247	222	20	2	3	-
G Wholesale and retail trade, repair of motor vehicles and motorcycles	590	569	12	6	3	-
H Transport and storage	76	75	-	-	1	-
I Accommodation and food service activities	359	342	10	5	2	-
J Information and communication	149	144	5	-	-	-
K Financial and insurance activities	17	17	-	-	-	-
L Real estate activities	18	17	-	1	-	-
M Professional, scientific and technical activities	236	230	4	1	1	-
N Administrative and support service activities	151	147	4	-	-	-
O Public administration and defense	5	5	-	-	-	-
P Education	36	35	1	-	-	-
Q Human health and social work activities	59	56	3	-	-	-
R Arts, entertainment and recreation	50	49	-	1	-	-
S Other service activities	167	163	2	2	-	-

**Graph 8. Structure of registered enterprises by category of number of employees, Q2 2019**

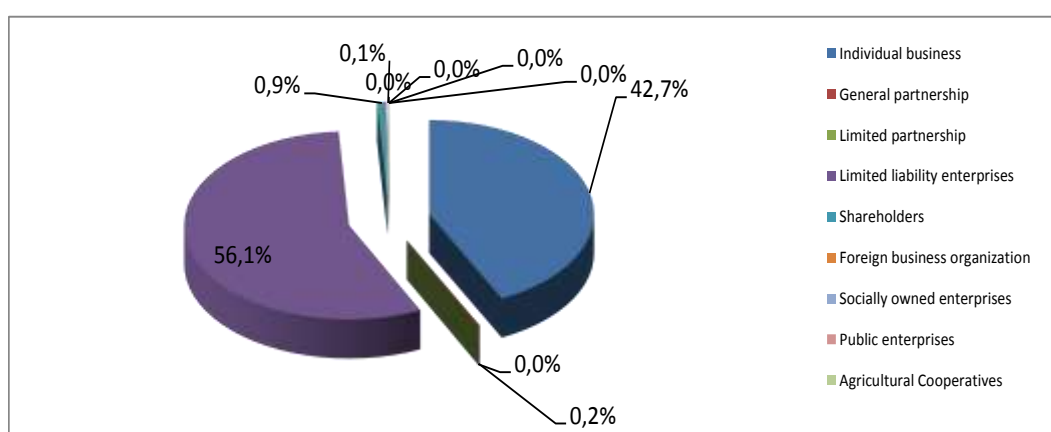


## 8 Registered enterprises by legal form

**Table 8. Number of registered enterprises by sector of economic activity and legal form of organization in Q2 2019**

Sector of economic activity	Legal form and organization										
	Total	Individual business	General partnership	Limited partnership	Limited liability enterprises	Shareholders	Foreign business organization	Socially owned enterprises	Public enterprises	Agricultural Cooperatives	Other companies under the jurisdiction of KTA
<b>Total</b>	<b>2655</b>	<b>1135</b>	<b>4</b>	<b>-</b>	<b>1489</b>	<b>23</b>	<b>3</b>	<b>-</b>	<b>-</b>	<b>1</b>	<b>-</b>
A Agriculture, forestry and fishing	0	-	-	-	-	-	-	-	-	-	-
B Mining and quarrying	2	-	-	-	2	-	-	-	-	-	-
C Manufacturing	479	265	-	-	213	-	-	-	-	1	-
D Electricity, gas, steam and air conditioning supply	5	-	-	-	4	1	-	-	-	-	-
E Water supply, sewage, waste management and remediation activities	9	2	-	-	6	1	-	-	-	-	-
F Construction	247	65	1	-	176	5	-	-	-	-	-
G Wholesale and retail trade, repair of motor vehicles and motorcycles	590	209	1	-	378	2	-	-	-	-	-
H Transport and storage	76	50	-	-	26	-	-	-	-	-	-
I Accommodation and food service activities	359	183	-	-	175	1	-	-	-	-	-
J Information and communication	149	48	1	-	98	2	-	-	-	-	-
K Financial and insurance activities	17	6	-	-	10	1	-	-	-	-	-
L Real estate activities	21	2	-	-	15	1	3	-	-	-	-
M Professional, scientific and technical activities	233	78	1	-	148	6	-	-	-	-	-
N Administrative and support service activities	151	41	-	-	108	2	-	-	-	-	-
O Public administration and defense	5	1	-	-	4	-	-	-	-	-	-
P Education	36	14	-	-	21	1	-	-	-	-	-
Q Human health and social work activities	59	19	-	-	40	-	-	-	-	-	-
R Arts, entertainment and recreation	50	33	-	-	17	-	-	-	-	-	-
S Other service activities	167	119	-	-	48	-	-	-	-	-	-

**Graph 9. Registered enterprises by legal form of organization in Q2 2019**

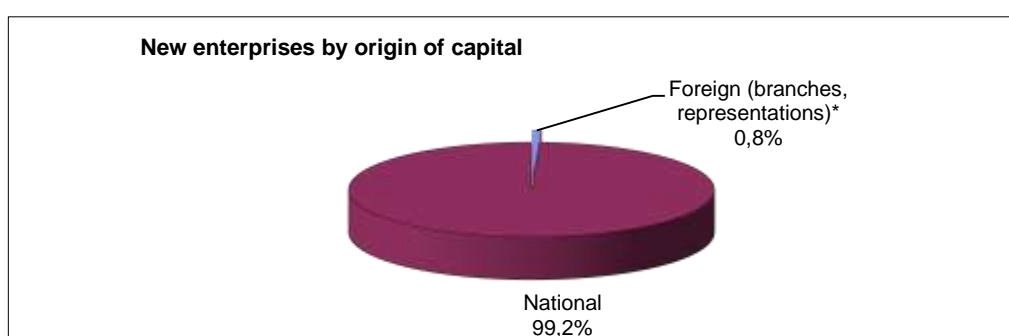


## 9 Registered enterprises by origin of capital

**Table 9. Number of registered enterprises by origin of capital in Q2 2019**

Category of number of employees	Total		Foreign (branches, representations)*		National	
	Number	Percentage	Number	Percentage	Number	Percentage
	2.655	100%	21	100,0%	2.634	100%
1-4	2.553	96,2%	18	85,7%	2.535	96,2%
5-9	71	2,7%	1	4,8%	70	2,7%
10-19	21	0,8%	1	4,8%	20	0,8%
20-249	10	0,4%	1	4,8%	9	0,3%
250+	-	0,0%	-	-	-	0,0%

**Graph 10. Structure of registered enterprises by origin of capital in Q2 2019**

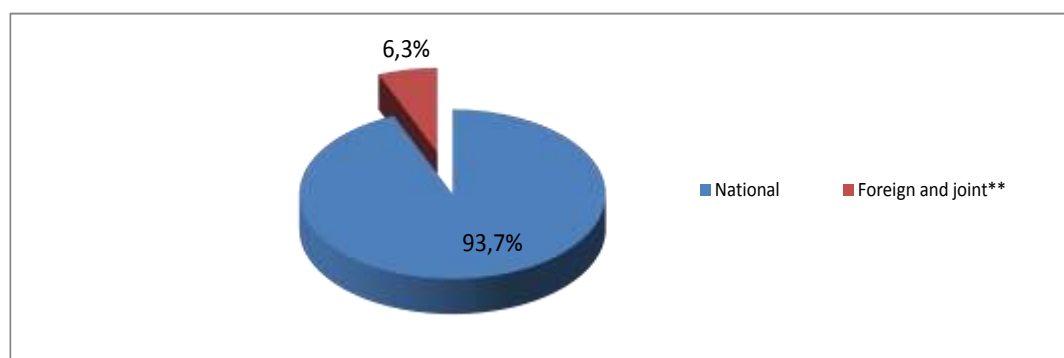


Note: The sign "\*" indicates that we are dealing only with foreign businesses defined in page 8 (Foreign businesses as defined by KBRA).

**Table 10. Number of registered enterprises by type of ownership in Q2 2019**

Total	National	Foreign and joint**		
		Total	Joint (Local + Foreign)	Foreign (branches, representations)*
<b>2.655</b>	<b>2.488</b>	<b>167</b>	<b>146</b>	<b>21</b>

**Graph 11. Structure of registered enterprises by type of ownership in Q2 2019**



Note: The sign "\*\*" in Table 11 and Graph 10 shows that we are dealing with a broader concept of definition of the origin of capital or ownership (registered enterprises with foreign and joint ownership).

## 10 Terminated enterprises

**Table 11. Number of terminated enterprises by municipality and sector of economic activity in Q2 2019**

Municipality	Sector of economic activity																			
	Agriculture, forestry and fishing	Mining and quarrying	Manufacturing	Electricity, gas, steam and air conditioning supply	Water supply, sewage, waste management and remediation activities	Construction	Wholesale and retail trade, repair of motor vehicles and motorcycles	Transportation and storage	Accommodation and food service activities	Information and communication	Financial and insurance activities	Real estate activities	Professional, scientific and technical activities	Administrative and support service activities	Public administration and protection: compulsory social protection	Education	Human health and social work activities	Arts, entertainment and recreation	Other service activities	
Code and name	Total	A	B	C	D	E	F	G	H	I	J	K	L	M	N	O	P	Q	R	S
	<b>447</b>	<b>28</b>	<b>2</b>	<b>46</b>	<b>0</b>	<b>2</b>	<b>39</b>	<b>150</b>	<b>32</b>	<b>20</b>	<b>27</b>	<b>2</b>	<b>1</b>	<b>22</b>	<b>18</b>	<b>2</b>	<b>8</b>	<b>9</b>	<b>2</b>	<b>37</b>
01 Deçan	10	-	-	1	-	2	-	5	1	-	-	-	-	1	-	-	-	-	-	-
02 Gjakovë	30	1	-	5	-	-	1	10	-	1	1	-	-	2	4	-	-	1	-	4
03 Glogoc	9	3	-	-	-	-	3	1	-	-	-	-	-	1	-	-	-	-	-	1
04 Gjilan	28	-	1	1	-	-	4	13	2	-	2	-	-	2	-	-	-	-	-	3
05 Dragash	5	1	-	-	-	-	1	1	-	-	2	-	-	-	-	-	-	-	-	-
06 Istog	6	-	-	2	-	-	-	1	-	1	-	-	-	-	1	-	-	-	-	1
07 Kaçanik	2	-	-	1	-	-	-	1	-	-	-	-	-	-	-	-	-	-	-	-
08 Klinë	7	1	-	1	-	-	-	3	-	-	-	-	-	-	-	-	-	-	-	2
09 F.Kosovë	7	-	-	1	-	-	-	2	2	1	-	-	-	-	-	-	-	1	-	-
10 Kamenicë	12	-	-	1	-	-	-	5	2	-	2	-	-	-	1	-	-	-	-	1
11 Mitrovicë	31	-	-	2	-	-	2	11	4	1	1	1	1	1	1	-	-	-	1	5
12 Leposaviq	-	-	-	-	-	-	-	-	-	-	-	-	-	-	-	-	-	-	-	-
13 Lipjan	7	1	-	-	-	-	1	2	1	-	-	-	-	-	-	-	-	-	-	2
14 Novobërdë	2	1	-	-	-	-	-	-	1	-	-	-	-	-	-	-	-	-	-	-
15 Obiliq	4	-	-	1	-	-	1	1	1	-	-	-	-	-	-	-	-	-	-	-
16 Rahovec	16	-	-	3	-	-	-	8	-	1	-	-	-	2	-	1	1	-	-	-
17 Pejë	14	-	-	2	-	-	3	6	-	-	2	-	-	-	-	-	1	-	-	-
18 Podujevë	26	5	-	2	-	-	2	6	3	2	3	-	-	1	1	-	-	-	-	1
19 Prishtinë	66	4	-	2	-	-	5	21	3	4	7	1	-	5	3	1	1	2	1	6
20 Prizren	53	-	1	7	-	-	1	17	4	5	2	-	-	4	3	-	1	3	-	5
21 Skenderaj	8	3	-	2	-	-	-	3	-	-	-	-	-	-	-	-	-	-	-	-
22 Shtime	2	-	-	-	-	-	1	-	-	-	-	-	-	-	-	-	1	-	-	-
23 Shtërpce	2	-	-	-	-	-	-	-	1	-	-	-	-	-	-	-	-	-	-	1
24 Suharekë	24	-	-	2	-	-	3	13	2	-	2	-	-	1	-	-	1	-	-	-
25 Ferizaj	41	-	-	6	-	-	8	10	2	4	-	-	-	1	3	-	1	2	-	4
26 Viti	10	3	-	1	-	-	2	4	-	-	-	-	-	-	-	-	-	-	-	-
27 Vushtri	10	2	-	1	-	-	1	3	1	-	1	-	-	-	-	-	1	-	-	-
28 Zubin Potok	1	1	-	-	-	-	-	-	-	-	-	-	-	-	-	-	-	-	-	-
29 Zveçan	1	-	-	-	-	-	-	1	-	-	-	-	-	-	-	-	-	-	-	-
30 Malishevë	7	1	-	1	-	-	-	1	1	-	2	-	-	-	-	-	-	-	-	1
31 Juniku	-	-	-	-	-	-	-	-	-	-	-	-	-	-	-	-	-	-	-	-
32 Mamushë	-	-	-	-	-	-	-	-	-	-	-	-	-	-	-	-	-	-	-	-
33 Hani i Elezit	2	-	-	-	-	-	-	1	1	-	-	-	-	-	-	-	-	-	-	-
34 Graçanica	1	-	-	1	-	-	-	-	-	-	-	-	-	-	-	-	-	-	-	-
35 Ranillug	-	-	-	-	-	-	-	-	-	-	-	-	-	-	-	-	-	-	-	-
36 Partesh	-	-	-	-	-	-	-	-	-	-	-	-	-	-	-	-	-	-	-	-
37 Kllokot	-	-	-	-	-	-	-	-	-	-	-	-	-	-	-	-	-	-	-	-
38 North. Mitrovica	3	1	-	-	-	-	-	-	-	-	-	-	-	1	1	-	-	-	-	-

# Kosovo Agency of Statistics

## *short description*

**Kosovo Agency of Statistics** is a professional institution which deals with collection, processing and publication of official statistical data. As such acts since 1948 and has passed through several historical stages, structured according to state regulation of those times.

On 2 August 1999, the Agency has resumed his professional work (after nine years of interruption of all statistical series detrimental to the interest of Kosovo), as an independent institution under the Ministry of Public Administration. Since 12.12.2011 the Agency operates in the frames of the Prime Minister's Office. Office is funded by the Kosovo Consolidated Budget, but also by donors for specific projects and for technical professional support.

**Kosovo Agency of Statistics** acts according to the Law No. 04/L-036 which entered into force on 12.12.2011. Programme of Official Statistics 2013/2017 is in implementation for the development of statistical system in correlation with the European Union statistics (EUROSTAT).

**Kosovo Agency of Statistics** has this organizational structure: production departments; Department of Economic statistics, Department of National Accounts, Department of Agriculture and Environment statistics and Department of Social statistics. **Support Departments**; Department of Methodology and Information Technology, Department of Policy Planning, Coordination and Communication, Department of Census and survey and Department of Administration. **Within the Agency are also established Regional Offices**; Gjakove, Gjilan, Mitrovica, Peja, Prizren, Pristina and Ferizaj

In KAS are employed in total 155 workers, of whom 100 (68,0 %) at the headquarters of the Agency, while in the Regional Offices, 47 (32,0%). Agency's educational qualifying structure is as follows: 75,5% with university education, 12,3% with with non-tertiary education, and 12.3% with secondary education.

We have professional and technical cooperation with all Ministries of the Government of Kosovo, especially with the Ministry of Economy and Finance, Central Bank of Kosovo, with international institutions, EUROSTAT, International Monetary Fund, World Bank, Sweden's SIDA, DFID, UNFPA, UNDP, UNVEF, and with the statistical institutions of the countries in the region.

**Kosovo Agency of Statistics** almost completely covers the territory of Kosovo, based on the statistical structure of the enumeration areas as the basic unit and sole in the country from which it gets first hand information. All surveys conducted in the field use the extension of the samples in these enumeration areas but also a statistical methodology according to international recommendations. During the collection of statistical data and reports from reporting entities are involved professionals, technicians, administrators, servants of the country offices, field enumerators from regional offices, etc.

In 2011, the project of Population Census , Households and Dwellings was successfully implemented, and in 2014 was successfully carried out the Agriculture Census. The result obtained from these censuses will have an important role in the development policies.

**The mission of the Agency**; to meet the needs of users with qualitative statistical data, objective, in time and space so that users have reliable base to conduct regular analysis in the interest of planning and project development at the municipal and country level. To support government institutions, scientific institutes, research academies, businesses in order to provide proper information for decision-makers and other users in Kosovo.

- **Address: KOSOVO AGENCY OF STATISTICS**  
Street. "Zenel Salihu", No. 4, 10000 Pristina
- **Telephone:** +383 (0) 38 200 31 129  
CEO: +383 (0) 38 200 31 112
- **Fax::** +383 (0) 38 235 033
- **E-mail:** [infoask@rks-gov.net](mailto:infoask@rks-gov.net)
- **Web:** <http://ask.rks-gov.net>