



Republika e Kosovës  
Republika Kosova-Republic of Kosovo  
*Qeveria - Vlada - Government*  
Zyra e Kryeministrit -Ured Premijera -Office of the Prime Minister  
*Agjencia e Statistikave të Kosovës - Agencija za Statistike Kosova - Kosovo Agency of Statistics*

## Series 3: Economic Statistics

# Statistical Repertoire of Enterprises in Kosovo Q4 2017



## Foreword

Kosovo Agency of Statistics (KAS) has prepared publication "**Statistical Repertoire of Enterprises in Kosovo Q4 2017**", on new registered businesses at the Kosovo Business Registration Agency (KBRA) from 01.10.2017 until 31.12.2017 (fourth quarter of 2017).

Statistical Business Register (SBR) is part of KAS, which contains the basic information for all businesses that exercise economic activity in the territory of the Republic of Kosovo and as such serves for statistics and analysis of business demographics, sample preparation and raising the country-level results for all surveys conducted with businesses. SBR also serves as an important source of information for calculating Gross Domestic Product.

SBR is constructed and continuously updated based on two administrative data sources (KBRA and Tax Administration of Kosovo), as well as from regular statistical surveys conducted out by KAS.

Continuous demand for statistical data on enterprises are daily requirements from different users whether they are internal or external users of KAS, therefore based on these requirements we have prepared various tabular and graphical data.

We believe that this publication will serve as a useful reference base for all users of KAS statistical data and will serve as useful and relevant economic information for Kosovo.

Comments, remarks, suggestions and proposals regarding this publication are welcomed and they are sent to: [muhamet.kastrati@rks-gov.net](mailto:muhamet.kastrati@rks-gov.net)

Statistical Repertoire of Enterprises in Kosovo is a regular quarterly publication.

*NOTE: From September 1, 2014, the nomenclature of economic activities is in the new version NACE Rev. 2, and some of the previously published data are converted into this version.*

Publication was prepared by:

Ilir T. Berisha – Director of Department,  
Ismajl Sahiti – Head of Division,  
Hysni Elshani - Head of Sector,  
Muhamet Kastrati - IT specialist for SBR,  
Luljeta Krasniqi - Senior Officer,  
Ahmet Cakolli – Officer for Design.

January, 2018

Chief Executive Officer, KAS  
Isa Krasniqi

## List of Abbreviations

**KAS** Kosovo Agency of Statistics

**SBR** Statistical Business Register

**KBRA** Kosovo Business Registration Agency

**TAK** Tax Administration of Kosovo

**MTI** Ministry of Trade and Industry

**GDP** Gross Domestic Product

**KPA** Kosovo Privatization Agency

**EC** European Commission

**NEA** Nomenclature of Economic Activities

**NACE Rev. 1** (Nomenclature of Economic Activities EC - 1st version)

**NACE Rev.2** (Nomenclature of Economic Activities EC - 2nd Version)

**SME** Small and Medium Enterprises

**Q1** First Quarter

**Q2** Second Quarter

**Q3** Third Quarter

**Q4** Fourth Quarter

## Symbols

- No occurrence

: Missing data

## Contents

	Page
1 Characteristics of enterprises registered in Q4 2017 .....	5
2 Methodological explanations and definitions.....	6
2.1. Definitions           7	
2.2. Legal forms of organization of business .....	8
3 New and terminated enterprises according to quarter.....	9
4 Enterprises according to economic section, legal form of organization and the category of number of employees.....	11
Categorization of enterprises according to size and gender .....	12
5 Number of registered enterprises according to municipality.....	13
6 Registered individual and non-individual enterprises.....	15
7 Registered enterprises according to section of economic activity and number of employees.....	17
8 Registered enterprises according to legal form .....	18
9 Registered enterprises according to origin of capital.....	19
10 Terminated enterprises .....	20



## **1 Characteristics of enterprises registered in Q4 2017**

In the fourth quarter of 2017 (Q4 2017) a total of 1921 enterprises were registered. Decline for 13.3% of registered enterprises is observed compared with the previous quarter (Q3 2017).

Also, a decline of 14.7% of registered enterprises is observed if compared to the same quarter last year (Q4 2016).

The most favored economic activities during this quarter were: Trade with 511 registered enterprises (26.6%), Accommodation and food service activities with 183 (9.5%), Construction with 180 enterprises (9.4%), Professional, scientific and technical activities with 171 registered enterprises or (8.9%), Manufacture with 166 (8.6%), while other activities participate in smaller scale.

The category of number of employees, from 1 to 4 employees is 1846 enterprises or 96.1% of registered enterprises, category 5 to 9 employees with 47 enterprises (2.4%), 10 to 19 employees with 18 enterprises (0.9%), 20 to 249 employees with 10 enterprises (0.5%), while in category 250+ employees there are no enterprises registered during this quarter.

Regarding the geographic extent of the enterprises registered at the municipal level, as in every quarter, Prishtina dominates with 643 registered enterprises (33.5%), Prizren with 147 (7.7%), Ferizaj with 146 (7.6%), Gjilan with 117 (6.1%), Peja 116 (6.0%), Mitrovica 75 (3.9%) while other municipalities have smaller number of enterprises registered in this quarter.

## 2 Methodological explanations and definitions

Statistical Business Register (SBR) serves for statistical purposes and shall clearly identify the units in order:

- To allow receiving information about them via administrative sources.
- To enable the preparation of samples; coordination of surveys and the aggregation/grouping of results;
- To allow analysis of the demographic population of enterprises and units associated with them.
- Provide input data (input) for the calculation of Gross Domestic Product (GDP).

Statistical Business Register (SBR) - **Includes** all legal entities (enterprises) that exercise economic activity within the territory of Kosovo.

**Does not include:** Public administration, Non-profit Organizations and International Organizations.

**Sources for updating the SBR variables are:**

- Administrative
  - o Information from the Kosovo Business Registration Agency
  - o Information from the Tax Administration of Kosovo
- Statistical
  - o Enterprise Structure Survey
  - o Survey about Hotel Service
  - o Collection of Production Prices
  - o Collection of Import Prices

**Main variables in the SBR are grouped by:**

- **Identification of variables**
  - o Number of business registration (NBR), name, legal form, ownership, address, communication (phone, fax, email, etc.)
- **Stratified variables**
  - o Main economic activity, size by employees
- **Demographic variables**
  - o Date of registration, date of termination/closure
- **Updated variables are**
  - o Status of activity (active or non-active)
  - o Economic activity of the enterprise (NACE Rev. 1)
  - o Size by employees
  - o Address, and communication variables (telephone, fax, mobile, e-mail)

## 2.1. Definitions

Nomenclature of Economic Activities (NACE), is the four-digit level classification of economic activities exerted in different subjects.

This nomenclature is translation and adaptation of the European Classification of Economic Activities (NACE Rev. 2. In English).

The use of this nomenclature is mandatory since September 1, 2014 in all the institutions of the Republic of Kosovo and based on the regulation No.11/2013 adopted by the Government of the Republic of Kosovo.

The structure of economic activities NACE Rev. 2 consists of 21 sections presented below labelled with letters from A to U.

- A. Agriculture, forestry and fishing
- B. Mining and quarrying
- C. Manufacturing
- D. Electricity, gas, steam and air conditioning supply
- E. Water supply, sewerage, waste management and remediation activities
- F. Construction
- G. Wholesale and retail trade, repair of motor vehicles and motorcycles
- H. Transportation and storage
- I. Accommodation and food service activities
- J. Information and communication
- K. Financial and insurance activities
- L. Real estate activities
- M. Professional, scientific and technical activities
- N. Administrative and support service activities
- O. Public administration and defense
- P. Education
- Q. Human health and social work activities
- R. Arts, entertainment and recreation
- S. Other services activities
- T. Activities of households as employers
- U. Activities of extraterritorial organizations and bodies

Classes of economic activities according to the new nomenclature **NACE Rev. 2** are total of 615 of them, which are encoded by four digit code ranging from 0111 to 9900.



## 2.2. Legal forms of organization of business

Definitions applied to legal forms of enterprises under Regulation 2001/16 and Law No. 02/L123 on Trade and Corporation Associations which are applied when registering in the KBRA are as follows:

1. **Individual business** - is the **only natural person** who performs economic activities for the purpose of profit and who is registered in the KBRA. In the individual business the owner has unlimited liability for all debts of the company. The company has an official name or includes the surname of the lawful owner

**2. General partnership** - The general partnership, all partners jointly respond without restriction for partnership debts. A partnership has a label, which may include the name of one or more partners.

**3. Limited partnership** - In limited partnerships, except "unlimited" partners (partners responsible jointly without limitation for the debts of the company) also participate "limited" partners or those responsible for the company's obligations to the limit of the value of their founding contributions / capital.

**4. Limited liability enterprises** - Limited liability enterprises are those enterprises that are established by one or several founders, who answer only to the limit of the value of their contribution. Limited liability enterprise has a label, which may include the name of one or more partners.

**5. Shareholders** – Shareholders are those whose capital is divided into shares and shareholders respond only to the limit of the value of their contribution. Shareholder enterprise (a joint stock enterprises) can be established by having one or more shareholders.

**6. Foreign company** - A foreign company is a business and from the moment of registration is considered a branch in Kosovo that has no identity of legal person. After registration shall enjoy all the rights and obligations established under the applicable law.

**7. Social enterprise** - Social enterprise means a legal person that most assets and capital are socially owned. These enterprises until the privatization are monitored and registered by the Kosovo Privatization Agency under the Law on Commercial Companies No.02/L-123.

**8. Public enterprise** - Public enterprise is the enterprise which carries out activities of general interest which is established by the state. Public enterprise is monitored by the government and organized as a joint stock company in accordance with applicable law on Commercial Companies. All ownership interests in a public company will be represented by shares and these shares will be registered.

**9. Agricultural cooperative** - Agricultural cooperative is a business organization created by natural or legal persons who must be farmers who contribute with their private property to the share of capital.

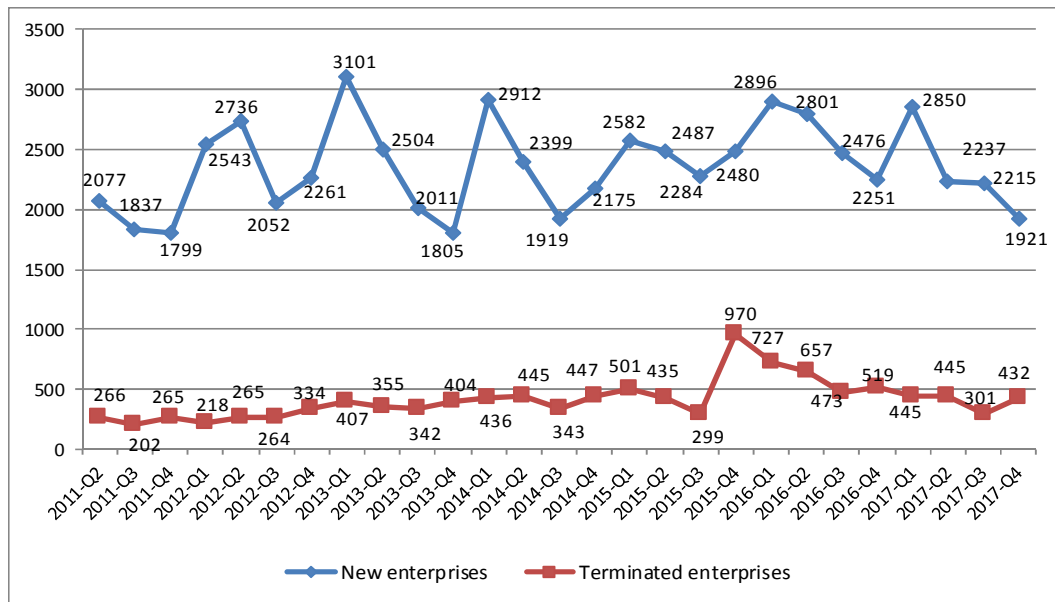
**10. Enterprise under the jurisdiction of the KPA** - are ex-social owned enterprises which are now managed and supervised by the KPA (Kosovo Privatization Agency).

### 3 New and terminated enterprises according to quarter

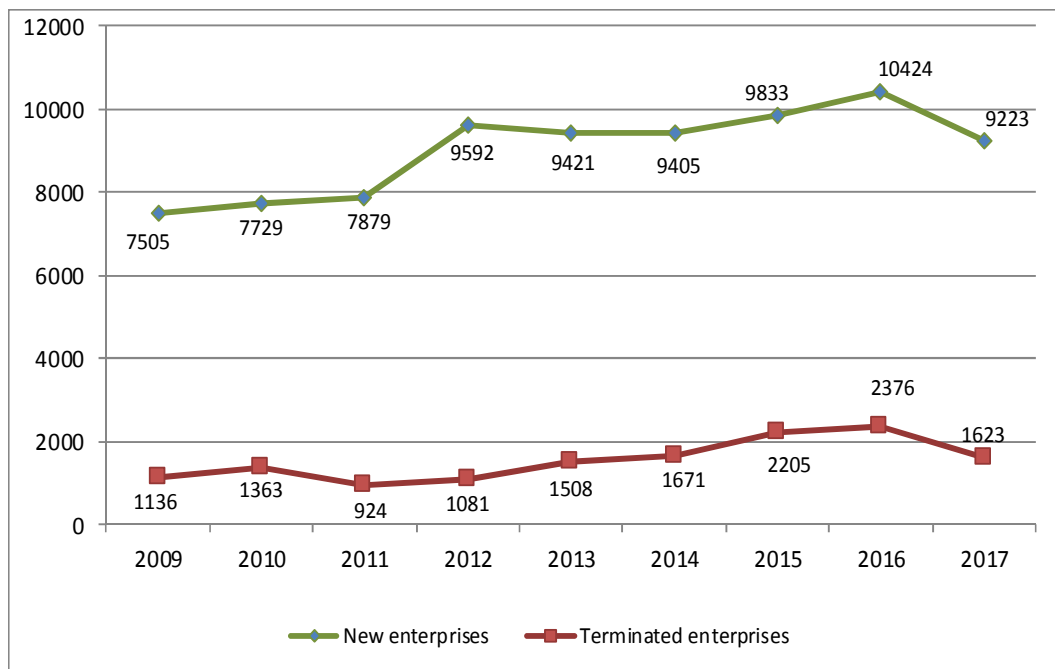
**Table 1. Number of registered enterprises according to quarter and sector of economic activity**

Period	Section of economic activity																			
	A	B	C	D	E	F	G	H	I	J	K	L	M	N	O	P	Q	R	S	
Quarter	Total	Agriculture, forestry and fishing	Mining and quarrying	Manufacturing	Electricity, gas, steam and air conditioning supply	Water supply, sewage, waste management and remediation activities	Construction	Wholesale and retail trade, repair of motor vehicles and motorcycles	Transportation and storage	Accommodation and food service activities	Information and communication	Financial and insurance activities	Real estate activities	Professional, scientific and technical activities	Administrative and support service activities	Public administration and protection: compulsory social protection	Education	Human health and social work activities	Arts, entertainment and recreation	Other service activities
2012 - Q1	<b>2528</b>	174	9	239	5	18	268	820	175	243	96	4	9	155	57	7	32	39	48	130
2012 - Q2	<b>2736</b>	218	26	278	3	17	259	809	156	300	82	3	10	190	70	6	24	36	36	213
2012 - Q3	<b>2051</b>	127	9	184	7	12	193	598	140	205	84	6	11	131	48	8	32	34	56	166
2012 - Q4	<b>2261</b>	222	11	201	5	12	224	691	139	207	78	3	7	137	78	4	26	20	54	142
2012 Total	<b>9576</b>	<b>741</b>	<b>55</b>	<b>902</b>	<b>20</b>	<b>59</b>	<b>944</b>	<b>2918</b>	<b>610</b>	<b>955</b>	<b>340</b>	<b>16</b>	<b>37</b>	<b>613</b>	<b>253</b>	<b>25</b>	<b>114</b>	<b>129</b>	<b>194</b>	<b>651</b>
2013 - Q1	<b>3100</b>	301	10	299	9	19	337	867	201	264	104	6	135	169	60	9	32	48	54	176
2013 - Q2	<b>2504</b>	142	7	258	2	14	227	759	107	246	101	4	95	162	65	9	28	43	52	183
2013 - Q3	<b>2011</b>	122	7	163	6	11	201	565	108	240	82	8	15	119	53	6	20	48	63	174
2013 - Q4	<b>1805</b>	188	5	152	5	6	178	543	109	161	70	2	12	135	36	9	18	34	62	80
2013 Total	<b>9420</b>	<b>753</b>	<b>29</b>	<b>872</b>	<b>22</b>	<b>50</b>	<b>943</b>	<b>2734</b>	<b>525</b>	<b>911</b>	<b>357</b>	<b>20</b>	<b>257</b>	<b>585</b>	<b>214</b>	<b>33</b>	<b>98</b>	<b>173</b>	<b>231</b>	<b>613</b>
2014 - Q1	<b>2911</b>	205	10	283	4	13	284	887	181	293	121	12	21	180	77	12	33	50	88	157
2014 - Q2	<b>2399</b>	186	9	283	3	16	207	704	99	282	95	8	10	146	61	11	20	39	55	165
2014 - Q3	<b>1919</b>	115	7	196	3	13	146	574	111	237	61	11	7	97	49	2	18	33	60	179
2014 - Q4	<b>2175</b>	168	6	216	14	9	166	649	143	222	80	12	21	147	65	17	19	51	50	120
2014 Total	<b>9404</b>	<b>674</b>	<b>32</b>	<b>978</b>	<b>24</b>	<b>51</b>	<b>803</b>	<b>2814</b>	<b>534</b>	<b>1034</b>	<b>357</b>	<b>43</b>	<b>59</b>	<b>570</b>	<b>252</b>	<b>42</b>	<b>90</b>	<b>173</b>	<b>253</b>	<b>621</b>
2015 - Q1	<b>2582</b>	255	7	276	8	12	237	784	143	253	104	12	15	144	80	6	20	36	57	133
2015 - Q2	<b>2487</b>	212	12	261	5	13	193	751	142	263	98	15	15	139	76	10	29	67	60	126
2015 - Q3	<b>2284</b>	208	8	239	4	8	160	622	108	256	86	43	19	123	66	3	25	49	68	189
2015 - Q4	<b>2480</b>	270	5	271	13	15	163	746	131	246	80	25	25	175	74	6	35	35	58	107
2015 Total	<b>9833</b>	<b>945</b>	<b>32</b>	<b>1047</b>	<b>30</b>	<b>48</b>	<b>753</b>	<b>2903</b>	<b>524</b>	<b>1018</b>	<b>368</b>	<b>95</b>	<b>74</b>	<b>581</b>	<b>296</b>	<b>25</b>	<b>109</b>	<b>187</b>	<b>243</b>	<b>555</b>
2016 - Q1	<b>2896</b>	261	16	343	12	17	254	820	151	249	108	68	14	183	82	8	40	63	73	134
2016 - Q2	<b>2801</b>	223	6	334	11	13	202	779	150	326	114	34	17	170	101	6	42	60	51	162
2016 - Q3	<b>2476</b>	372	6	258	9	26	194	552	125	232	105	28	15	122	81	8	31	46	77	189
2016 - Q4	<b>2251</b>	234	6	246	10	9	177	587	102	210	96	48	12	179	89	2	28	35	70	111
2016 Total	<b>10424</b>	<b>1090</b>	<b>34</b>	<b>1181</b>	<b>42</b>	<b>65</b>	<b>827</b>	<b>2738</b>	<b>528</b>	<b>1017</b>	<b>423</b>	<b>178</b>	<b>58</b>	<b>654</b>	<b>353</b>	<b>24</b>	<b>141</b>	<b>204</b>	<b>271</b>	<b>596</b>
2017 - Q1	<b>2850</b>	350	12	265	10	11	269	799	115	261	118	23	23	188	110	6	39	50	76	125
2017 - Q2	<b>2237</b>	96	11	234	6	8	202	623	84	278	100	30	16	189	110	1	15	50	52	132
2017 - Q3	<b>2215</b>	245	6	225	5	9	188	529	78	208	116	20	17	186	91	6	30	45	51	160
2017 - Q4	<b>1921</b>	131	6	166	17	10	180	511	70	183	107	37	9	171	90	5	26	46	52	104

**Graph 1. Number of registered and terminated enterprises according to quarter**



**Graph 2: Number of registered and terminated enterprises according to year**

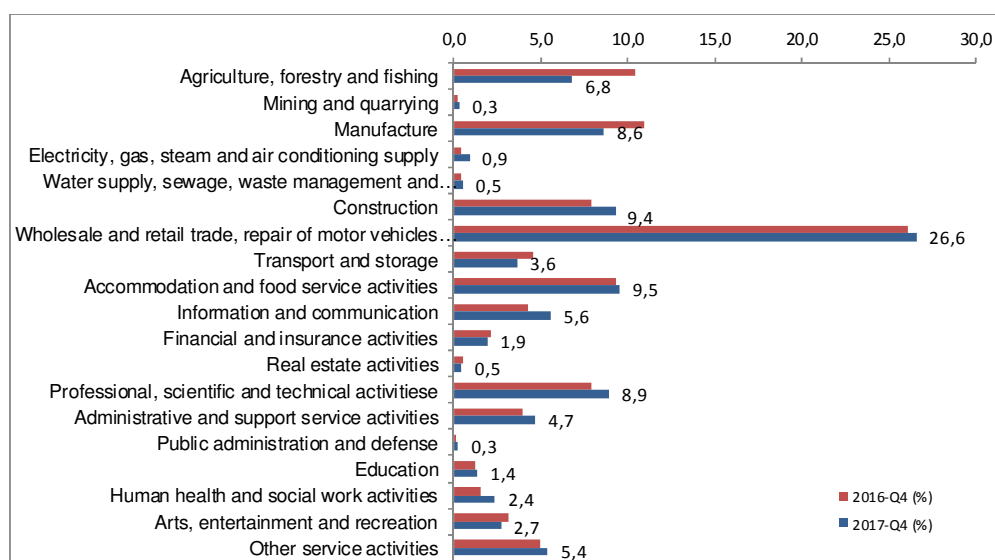


## 4 Enterprises according to economic section, legal form of organization and the category of number of employees

**Table 2. Number of registered enterprises according to sector of economic activity, type and the number of employees in Q4 2017**

Section of economic activity	Total	Category of number of employees					
		individual businesses			non-individual businesses		
		Total	1-4	5 +	Total	1-4	5 +
<b>Total</b>	<b>1921</b>	<b>825</b>	<b>822</b>	<b>3</b>	<b>1096</b>	<b>1024</b>	<b>72</b>
A Agriculture, forestry and fishing	131	93	92	1	38	34	4
B Mining and quarrying	6	-	-	-	6	6	-
C Manufacture	166	66	66	-	100	85	15
D Electricity, gas, steam and air conditioning supply	17	2	2	-	15	13	2
E Water supply, sewage, waste management and remediation activities	10	2	2	-	8	7	1
F Construction	180	59	59	-	121	113	8
G Wholesale and retail trade, repair of motor vehicles and motorcycles	511	210	210	-	301	290	11
H Transport and storage	70	46	46	-	24	22	2
I Accommodation and food service activities	183	99	98	1	84	77	7
J Information and communication	107	27	27	-	80	72	8
K Financial and insurance activities	37	16	16	-	21	19	2
L Real estate activities	9	1	1	-	8	7	1
M Professional, scientific and technical activities	171	55	55	-	116	115	1
N Administrative and support service activities	90	20	20	-	70	65	5
O Public administration and defense	5	1	1	-	4	3	1
P Education	26	10	10	-	16	13	3
Q Human health and social work activities	46	21	21	-	25	24	1
R Arts, entertainment and recreation	52	27	26	1	25	25	-
S Other service activities	104	70	70	-	34	34	-

**Graph 3. Enterprises registered according to economic section in Q4 2017**

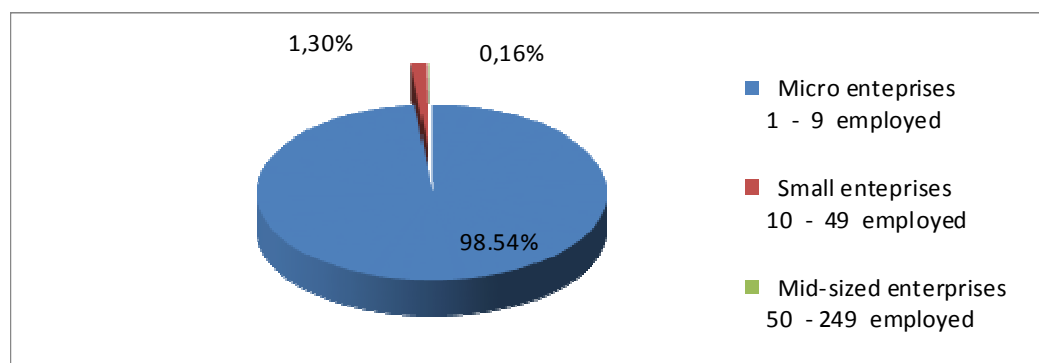


## Categorization of enterprises according to size and gender

**Table 3. The number of SMEs in Q3 2017**

Classification employees	Number of employees	Number of businesses	%
Micro enterprises	1 - 9 employed	1893	98,54%
Small enterprises	10 - 49 employed	25	1,30%
Mid-sized enterprises	50 - 249 employed	3	0,16%
Large enterprises	250 + employed	-	-
<b>Total</b>		1921	100%

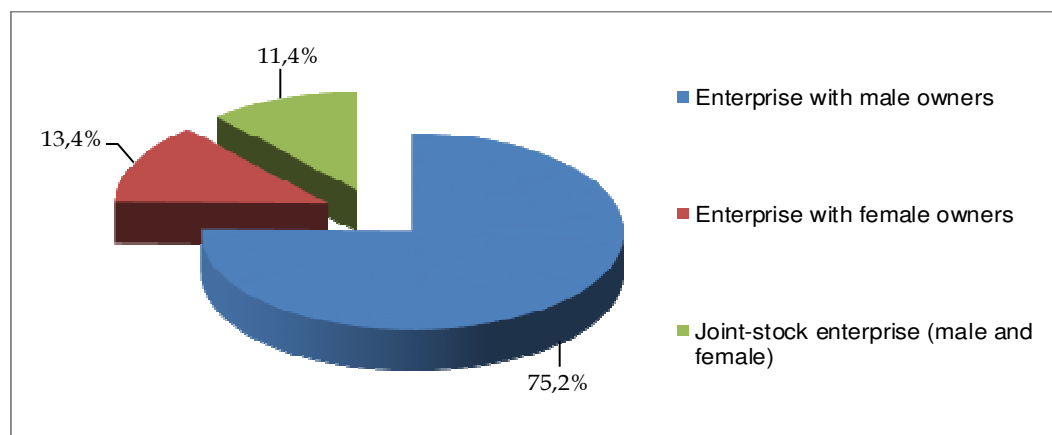
**Graph 4. Structure of enterprises according to size in Q4 2017**



**Table 5. Structure of enterprises according to gender of the owners in Q4 2017**

Structure of enterprises registered according to gender of the owners						
Total	Enterprise with male owners		Enterprise with female owners		Enterprises with mixed owners (male and female)	
1921	1445	75,2%	257	13,4%	219	11,4%

**Graph 6. Presentation of enterprises according to gender of owner in Q4 2017**

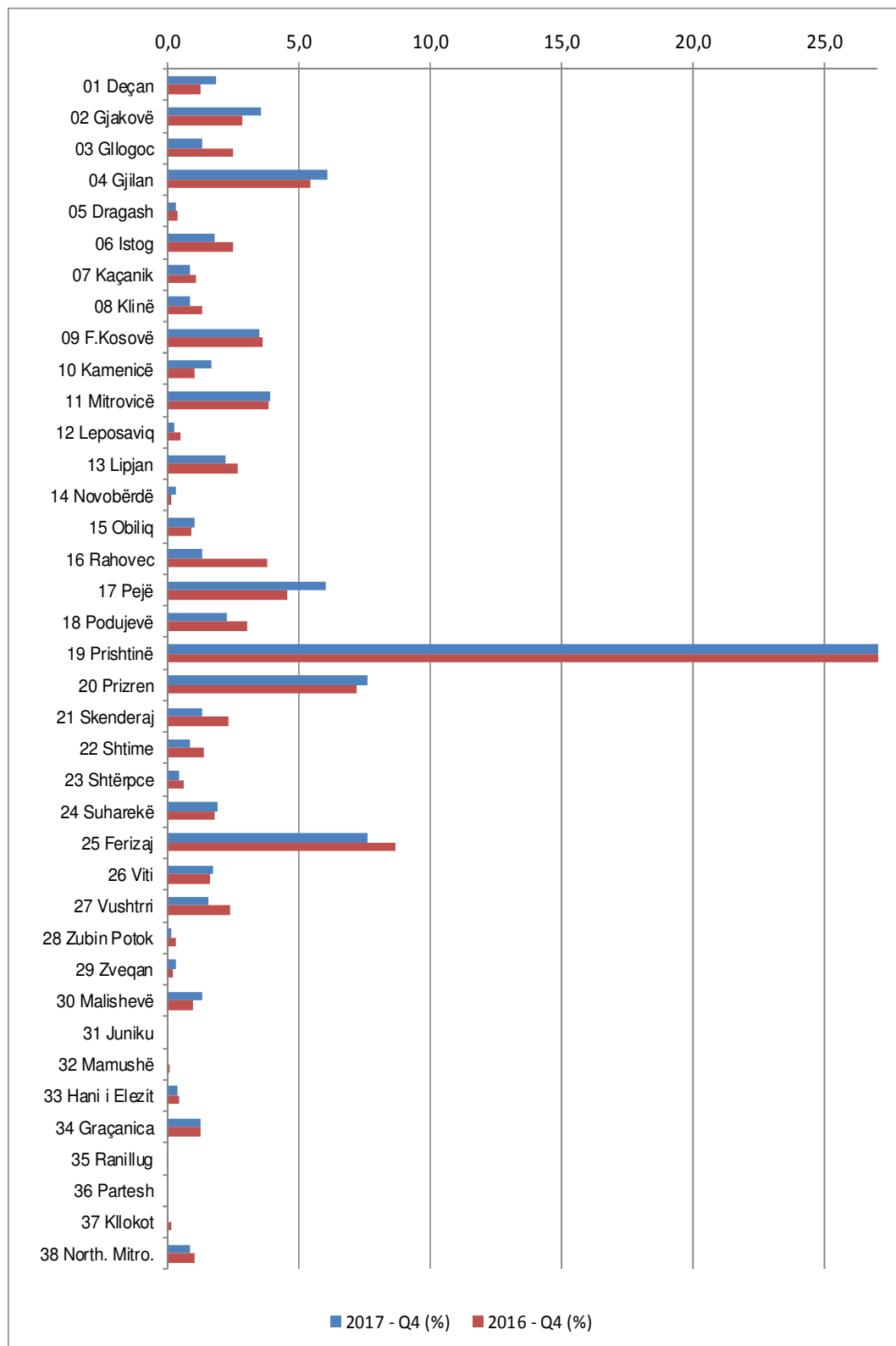


## 5 Number of registered enterprises according to municipality

**Table 4. Number of registered enterprises according to municipality and section of economic activity in Q4 2017**

Municipality	Section of economic activity																			
	Agriculture, forestry and fishing	Mining and quarrying	Manufacturing	Electricity, gas, steam and air conditioning supply	Water supply, sewage, waste management and remediation activities	Construction	Wholesale and retail trade, repair of motor vehicles and motorcycles	Transportation and storage	Accommodation and food service activities	Information and communication	Financial and insurance activities	Real estate activities	Professional, scientific and technical activities	Administrative and support service activities	Public administration and protection: compulsory social protection	Education	Human health and social work activities	Arts, entertainment and recreation	Other service activities	
	Total	A	B	C	D	E	F	G	H	I	J	K	L	M	N	O	P	Q	R	S
Code and name	1921	131	6	166	17	10	180	511	70	183	107	37	9	171	90	5	26	46	52	104
01 Deçan	36	2	-	4	-	1	6	11	-	7	-	1	-	1	-	-	-	-	2	1
02 Gjakovë	68	3	1	9	1	1	4	12	4	12	2	2	-	5	3	-	1	1	5	2
03 Gillogoc	25	4	-	1	1	-	5	5	-	2	2	-	2	2	-	-	-	-	1	-
04 Gjilan	117	7	-	12	-	-	9	33	6	8	4	4	-	8	7	-	3	7	2	7
05 Dragash	6	-	-	-	-	-	2	2	1	-	-	-	-	1	-	-	-	-	-	-
06 Istog	35	6	1	2	-	-	1	8	3	3	2	-	1	3	-	-	-	1	-	4
07 Kaçanik	16	1	-	-	-	1	2	3	2	1	-	-	-	3	-	-	-	-	1	2
08 Klinë	17	3	-	2	-	-	2	4	1	1	-	-	-	2	-	-	-	1	-	1
09 F.Kosovë	67	1	1	6	-	-	10	18	4	9	3	2	2	5	2	-	-	1	1	2
10 Kamenicë	32	4	1	1	-	-	1	9	1	4	-	1	-	3	2	-	-	1	1	3
11 Mitrovicë	75	3	-	4	3	-	10	19	4	7	4	1	-	7	9	-	-	2	1	1
12 Leposaviq	5	1	-	1	-	-	-	-	-	-	1	-	-	1	-	1	-	-	-	-
13 Lipjan	43	3	-	5	-	2	5	13	2	4	2	-	-	3	-	-	-	1	1	2
14 Novobërdë	6	3	-	-	-	-	-	2	-	1	-	-	-	-	-	-	-	-	-	-
15 Obiliq	20	3	-	-	-	-	-	5	-	5	-	-	-	2	-	-	1	1	3	-
16 Rahovec	25	5	1	4	-	-	2	5	1	-	-	-	-	-	2	-	1	-	2	2
17 Pejë	116	8	-	16	-	1	5	38	7	12	4	2	-	8	7	-	3	1	1	3
18 Podujevë	44	7	-	2	-	-	7	18	-	4	3	1	-	-	-	-	-	-	1	-
19 Prishtinë	643	18	-	39	7	1	52	159	10	60	57	16	7	94	35	3	9	17	16	43
20 Prizren	147	13	-	17	1	2	12	45	3	15	4	4	-	8	4	-	3	6	4	6
21 Skenderaj	25	7	-	4	-	-	1	6	1	2	-	-	-	-	-	-	2	1	1	-
22 Shtime	16	3	-	2	-	-	1	5	3	1	1	-	-	-	-	-	-	-	-	-
23 Shtërpçe	9	1	-	-	-	-	-	3	-	3	-	-	-	-	1	-	-	-	1	-
24 Suharekë	37	6	-	6	-	-	2	12	1	2	1	-	-	4	1	-	-	-	1	1
25 Ferizaj	146	3	-	18	3	-	19	39	5	10	12	2	-	5	8	1	1	3	3	14
26 Viti	33	4	1	5	-	-	8	8	1	2	-	-	-	-	-	-	-	-	3	1
27 Vushtri	30	3	-	2	-	-	1	7	4	1	2	-	-	4	1	-	1	1	-	3
28 Zubin Potok	3	1	-	-	-	-	1	-	-	-	-	-	-	-	-	-	-	-	-	1
29 Zveçan	6	1	-	-	-	-	-	3	1	-	-	1	-	-	-	-	-	-	-	-
30 Malishevë	25	4	-	1	-	1	8	7	-	2	-	-	-	1	-	-	-	-	1	-
31 Juniku	-	-	-	-	-	-	-	-	-	-	-	-	-	-	-	-	-	-	-	-
32 Mamushë	-	-	-	-	-	-	-	-	-	-	-	-	-	-	-	-	-	-	-	-
33 Hani i Elezit	7	-	-	-	-	-	1	1	2	-	1	-	-	-	1	1	-	-	-	-
34 Graçanica	24	2	-	3	1	-	1	7	-	5	2	-	-	1	-	-	-	-	1	1
35 Ranillug	-	-	-	-	-	-	-	-	-	-	-	-	-	-	-	-	-	-	-	-
36 Partesh	-	-	-	-	-	-	-	-	-	-	-	-	-	-	-	-	-	-	-	-
37 Kllokot	-	-	-	-	-	-	-	-	-	-	-	-	-	-	-	-	-	-	-	-
38 North. Mitro.	17	1	-	-	-	-	2	4	3	-	-	-	-	4	-	-	-	-	-	3

**Graph 7. Structure of registered enterprises according to municipality, Q4 2017**



## 6 Registered individual and non-individual enterprises

**Table 5. Number of registered individual enterprises according to municipality and section of economic activity in Q4 2017**

Municipality	Section of economic activity																			
	Agriculture, forestry and fishing	Mining and quarrying	Manufacturing	Electricity, gas, steam and air conditioning supply	Water supply, sewage, waste management and remediation activities	Construction	Wholesale and retail trade, repair of motor vehicles and motorcycles	Transportation and storage	Accommodation and food service activities	Information and communication	Financial and insurance activities	Real estate activities	Professional, scientific and technical activities	Administrative and support service activities	Public administration and protection: compulsory social protection	Education	Human health and social work activities	Arts, entertainment and recreation	Other service activities	
Code and name	Total	A	B	C	D	E	F	G	H	I	J	K	L	M	N	O	P	Q	R	S
	<b>825</b>	<b>92</b>	<b>-</b>	<b>67</b>	<b>-</b>	<b>2</b>	<b>59</b>	<b>210</b>	<b>46</b>	<b>99</b>	<b>27</b>	<b>16</b>	<b>1</b>	<b>55</b>	<b>20</b>	<b>1</b>	<b>10</b>	<b>21</b>	<b>27</b>	<b>70</b>
01 Deçan	27	1	-	4	-	-	3	10	-	5	-	1	-	1	-	-	-	-	1	1
02 Gjakovë	46	3	-	5	-	-	2	9	2	7	2	2	-	4	1	-	1	1	5	2
03 Gllgoc	15	3	-	-	-	-	2	2	-	2	2	-	-	1	2	-	-	-	1	-
04 Gjilan	44	5	-	3	-	-	2	10	5	4	1	1	-	4	1	-	1	2	1	4
05 Dragash	5	-	-	-	-	-	2	1	1	-	-	-	-	1	-	-	-	-	-	-
06 Istog	26	4	-	1	-	-	-	7	2	3	1	-	-	1	2	-	-	1	-	4
07 Kaçanik	6	-	-	-	-	-	-	1	2	1	-	-	-	1	-	-	-	-	-	1
08 Klinë	12	3	-	-	-	-	2	3	1	-	-	-	-	1	-	-	-	1	-	1
09 F.Kosovë	25	-	-	3	-	-	3	5	2	6	-	-	1	3	-	-	-	-	-	2
10 Kamenicë	23	3	-	-	-	-	1	6	1	4	-	-	-	2	2	-	-	1	-	3
11 Mitrovicë	37	1	-	2	1	-	4	15	2	3	2	1	-	2	1	-	-	1	1	1
12 Leposaviq	2	1	-	-	-	-	-	-	-	-	-	-	-	1	-	-	-	-	-	-
13 Lipjan	18	3	-	-	-	-	3	6	1	-	1	-	-	1	-	-	-	-	1	2
14 Novobërdë	2	1	-	-	-	-	-	1	-	-	-	-	-	-	-	-	-	-	-	-
15 Obiliq	10	2	-	-	-	-	-	2	-	3	-	-	-	-	-	-	1	-	2	-
16 Rahovec	16	4	-	2	-	-	1	2	1	-	-	-	-	1	-	1	-	2	2	2
17 Pejë	65	6	-	8	-	1	2	16	6	8	3	1	-	4	3	-	2	1	1	3
18 Podujevë	25	5	-	2	-	-	3	10	-	3	1	-	-	-	-	-	-	-	-	1
19 Prishtinë	151	15	-	11	-	-	7	33	3	18	9	5	-	19	4	1	-	4	4	18
20 Prizren	74	6	-	8	1	1	5	18	3	10	1	3	-	3	1	-	-	6	2	6
21 Skenderaj	22	7	-	3	-	-	-	5	1	2	-	-	-	-	-	-	2	1	1	-
22 Shtime	10	2	-	1	-	-	-	4	2	1	-	-	-	-	-	-	-	-	-	-
23 Shtërpce	5	-	-	-	-	-	-	1	-	2	-	-	-	-	1	-	-	-	1	-
24 Suharekë	22	4	-	3	-	-	-	11	1	2	-	-	-	1	-	-	-	-	-	-
25 Ferizaj	60	1	-	5	-	-	4	17	3	8	4	1	-	1	-	-	1	1	2	12
26 Viti	24	4	-	4	-	-	5	6	1	2	-	-	-	-	-	-	-	-	1	1
27 Vushtrri	16	3	-	1	-	-	1	1	1	1	-	-	-	3	-	-	1	1	-	3
28 Zubin Potok	2	1	-	-	-	-	-	-	-	-	-	-	-	-	-	-	-	-	-	1
29 Zveçan	3	1	-	-	-	-	-	1	-	-	-	1	-	-	-	-	-	-	-	-
30 Malishevë	12	2	-	-	-	-	5	3	-	1	-	-	-	-	-	-	-	-	1	-
31 Juniku	-	-	-	-	-	-	-	-	-	-	-	-	-	-	-	-	-	-	-	-
32 Mamushë	-	-	-	-	-	-	-	-	-	-	-	-	-	-	-	-	-	-	-	-
33 Hani i Elezit	4	-	-	-	-	-	1	1	2	-	-	-	-	-	-	-	-	-	-	-
34 Graçanicë	6	1	-	-	-	-	-	2	-	3	-	-	-	-	-	-	-	-	-	-
35 Ranillug	-	-	-	-	-	-	-	-	-	-	-	-	-	-	-	-	-	-	-	-
36 Partesh	-	-	-	-	-	-	-	-	-	-	-	-	-	-	-	-	-	-	-	-
37 Kllokot	-	-	-	-	-	-	-	-	-	-	-	-	-	-	-	-	-	-	-	-
38 North. Mitro.	10	-	-	1	-	-	1	1	3	-	-	-	-	2	-	-	-	-	-	2



**Table 6. Number of registered non-individual enterprises according to municipality and section of economic activity in Q4 2017**

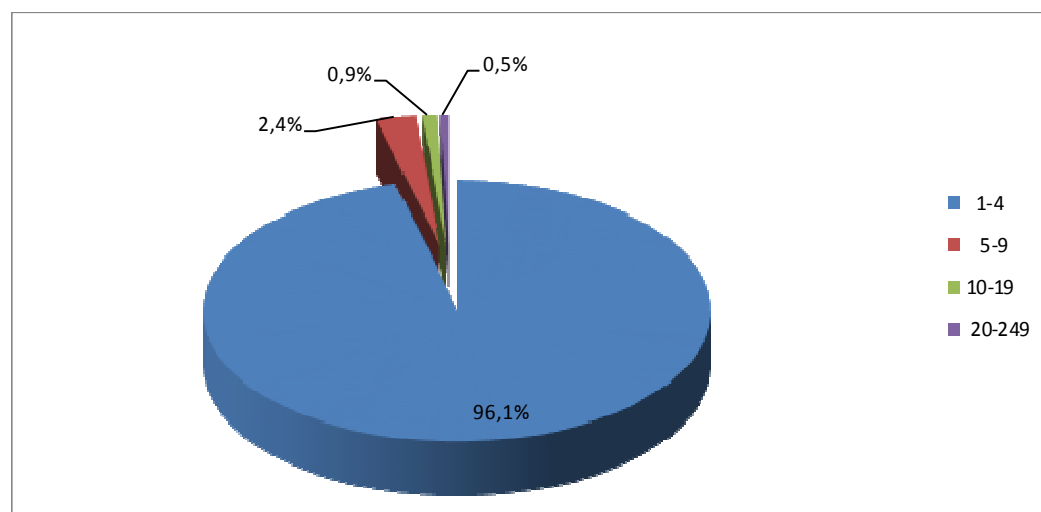
Municipality		Section of economic activity																		
		A	B	C	D	E	F	G	H	I	J	K	L	M	N	O	P	Q	R	S
Code and name	Total	Agriculture, forestry and fishing	Mining and quarrying	Manufacturing	Electricity, gas, steam and air conditioning supply	Water supply, sewage, waste management and remediation activities	Construction	Wholesale and retail trade, repair of motor vehicles and motorcycles	Transportation and storage	Accommodation and food service activities	Information and communication	Financial and insurance activities	Real estate activities	Professional, scientific and technical activities	Administrative and support service activities	Public administration and protection: compulsory social protection	Education	Human health and social work activities	Arts, entertainment and recreation	Other service activities
	<b>1096</b>	<b>38</b>	<b>6</b>	<b>100</b>	<b>15</b>	<b>8</b>	<b>121</b>	<b>301</b>	<b>24</b>	<b>84</b>	<b>80</b>	<b>21</b>	<b>8</b>	<b>116</b>	<b>70</b>	<b>4</b>	<b>16</b>	<b>25</b>	<b>25</b>	<b>34</b>
01 Deçan	9	1	-	-	-	1	3	1	-	2	-	-	-	-	-	-	-	-	1	-
02 Gjakovë	22	-	1	4	1	1	2	3	2	5	-	-	-	1	2	-	-	-	-	-
03 Glllogoc	10	1	-	1	1	-	3	3	-	-	-	-	-	1	-	-	-	-	-	-
04 Gjilan	73	2	-	9	-	-	7	23	1	4	3	3	-	4	6	-	2	5	1	3
05 Dragash	1	-	-	-	-	-	-	1	-	-	-	-	-	-	-	-	-	-	-	-
06 Istog	9	2	1	1	-	-	1	1	1	-	1	-	-	1	-	-	-	-	-	-
07 Kaçanik	10	1	-	-	-	1	2	2	-	-	-	-	-	2	-	-	-	-	1	1
08 Klinë	5	-	-	2	-	-	-	1	-	1	-	-	-	1	-	-	-	-	-	-
09 F.Kosovë	42	1	1	3	-	-	7	13	2	3	3	2	1	2	2	-	-	1	1	-
10 Kamenicë	9	1	1	1	-	-	-	3	-	-	-	1	-	1	-	-	-	-	1	-
11 Mitrovicë	38	2	-	2	2	-	6	4	2	4	2	-	-	5	8	-	-	1	-	-
12 Leposaviq	3	-	-	1	-	-	-	-	-	-	1	-	-	-	-	1	-	-	-	-
13 Lipjan	25	-	-	5	-	2	2	7	1	4	1	-	-	2	-	-	-	1	-	-
14 Novobërdë	4	2	-	-	-	-	-	1	-	1	-	-	-	-	-	-	-	-	-	-
15 Obiliq	10	1	-	-	-	-	-	3	-	2	-	-	-	2	-	-	-	1	1	-
16 Rahovec	9	1	1	2	-	-	1	3	-	-	-	-	-	-	1	-	-	-	-	-
17 Pejë	51	2	-	8	-	-	3	22	1	4	1	1	-	4	4	-	1	-	-	-
18 Podujevë	19	2	-	-	-	-	4	8	-	1	2	1	-	-	-	-	-	1	-	-
19 Prishtinë	492	3	-	28	7	1	45	126	7	42	48	11	7	75	31	2	9	13	12	25
20 Prizren	73	7	-	9	-	1	7	27	-	5	3	1	-	5	3	-	3	-	2	-
21 Skenderaj	3	-	-	1	-	-	1	1	-	-	-	-	-	-	-	-	-	-	-	-
22 Shtime	6	1	-	1	-	-	1	1	1	-	1	-	-	-	-	-	-	-	-	-
23 Shtërpce	4	1	-	-	-	-	-	2	-	1	-	-	-	-	-	-	-	-	-	-
24 Suharekë	15	2	-	3	-	-	2	1	-	-	1	-	-	3	1	-	-	-	1	1
25 Ferizaj	86	2	-	13	3	-	15	22	2	2	8	1	-	4	8	1	-	2	1	2
26 Viti	9	-	1	1	-	-	3	2	-	-	-	-	-	-	-	-	-	-	2	-
27 Vushtrri	14	-	-	1	-	-	-	6	3	-	2	-	-	1	1	-	-	-	-	-
28 Zubin Potok	1	-	-	-	-	-	1	-	-	-	-	-	-	-	-	-	-	-	-	-
29 Zveçan	3	-	-	-	-	-	-	2	1	-	-	-	-	-	-	-	-	-	-	-
30 Malishevë	13	2	-	1	-	1	3	4	-	1	-	-	-	-	1	-	-	-	-	-
31 Juniku	-	-	-	-	-	-	-	-	-	-	-	-	-	-	-	-	-	-	-	-
32 Mamushë	-	-	-	-	-	-	-	-	-	-	-	-	-	-	-	-	-	-	-	-
33 Hani i Elezit	3	-	-	-	-	-	-	-	-	-	1	-	-	1	1	-	-	-	-	-
34 Graçanicë	18	1	-	3	1	-	1	5	-	2	2	-	-	1	-	-	-	-	1	1
35 Ranillug	-	-	-	-	-	-	-	-	-	-	-	-	-	-	-	-	-	-	-	-
36 Partesh	-	-	-	-	-	-	-	-	-	-	-	-	-	-	-	-	-	-	-	-
37 Kllokot	-	-	-	-	-	-	-	-	-	-	-	-	-	-	-	-	-	-	-	-
38 North. Mitro.	7	-	-	-	-	-	1	3	-	-	-	-	-	2	-	-	-	-	-	1

## 7 Registered enterprises according to section of economic activity and number of employees

**Table 7. Number of registered enterprises according to section of economic activity and the number of employees in Q4 2017**

Section of economic activity	Total	Category of number of employees				
		1-4	5-9	10-19	20-249	250 +
<b>Total</b>	<b>1921</b>	<b>1846</b>	<b>47</b>	<b>18</b>	<b>10</b>	<b>-</b>
A Agriculture, forestry and fishing	131	126	3	2	-	-
B Mining and quarrying	6	6	-	-	-	-
C Manufacture	166	151	9	3	3	-
D Electricity, gas, steam and air conditioning supply	17	15	2	-	-	-
E Water supply, sewage, waste management and remediation activities	10	9	-	-	1	-
F Construction	180	172	3	4	1	-
G Wholesale and retail trade, repair of motor vehicles and motorcycles	511	500	8	2	1	-
H Transport and storage	70	68	1	1	-	-
I Accommodation and food service activities	183	175	7	1	-	-
J Information and communication	107	99	6	1	1	-
K Financial and insurance activities	37	35	1	-	1	-
L Real estate activities	9	8	-	1	-	-
M Professional, scientific and technical activities	171	170	-	1	-	-
N Administrative and support service activities	90	85	5	-	-	-
O Public administration and defense	5	4	-	-	1	-
P Education	26	23	-	2	1	-
Q Human health and social work activities	46	45	1	-	-	-
R Arts, entertainment and recreation	52	51	1	-	-	-
S Other service activities	104	104	-	-	-	-

**Graph 8. Structure of registered enterprises according to category of number of employees in Q4 2017**

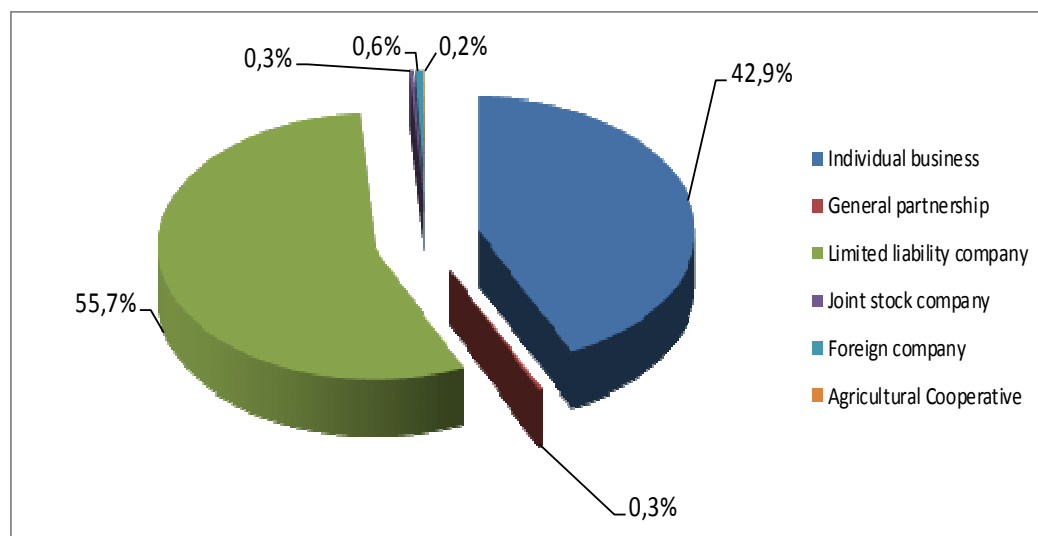


## 8 Registered enterprises according to legal form

**Table 8. Number of registered enterprises according to section of economic activity and legal form of organization in Q4 2017**

Section of economic activity	Legal form and organization										
	Total	Individual business	General partnership	Limited partnership	Limited liability company	Joint stock company	Foreign company	Socially owned enterprise	Public enterprise	Agricultural Cooperative	Other companies under the jurisdiction of KTA
<b>Total</b>	<b>1921</b>	<b>825</b>	<b>6</b>	<b>-</b>	<b>1070</b>	<b>5</b>	<b>12</b>	<b>-</b>	<b>-</b>	<b>3</b>	<b>-</b>
<i>A</i> Agriculture, forestry and fishing	131	93	-	-	36	-	-	-	-	2	-
<i>B</i> Mining and quarrying	6	-	-	-	6	-	-	-	-	-	-
<i>C</i> Manufacture	166	66	1	-	97	1	-	-	-	1	-
<i>D</i> Electricity, gas, steam and air conditioning supply	17	2	-	-	15	-	-	-	-	-	-
<i>E</i> Water supply, sewage, waste management and remediation activities	10	2	-	-	7	1	-	-	-	-	-
<i>F</i> Construction	180	59	-	-	119	1	1	-	-	-	-
<i>G</i> Wholesale and retail trade, repair of motor vehicles and motorcycles	511	210	4	-	294	3	-	-	-	-	-
<i>H</i> Transport and storage	70	46	-	-	23	1	-	-	-	-	-
<i>I</i> Accommodation and food service activities	183	99	-	-	84	-	-	-	-	-	-
<i>J</i> Information and communication	107	27	-	-	79	1	-	-	-	-	-
<i>K</i> Financial and insurance activities	37	16	1	-	18	2	-	-	-	-	-
<i>L</i> Real estate activities	9	1	-	-	8	-	-	-	-	-	-
<i>M</i> Professional, scientific and technical activities	171	55	-	-	114	2	-	-	-	-	-
<i>N</i> Administrative and support service activities	90	20	-	-	68	2	-	-	-	-	-
<i>O</i> Public administration and defense	5	1	-	-	4	-	-	-	-	-	-
<i>P</i> Education	26	10	-	-	15	1	-	-	-	-	-
<i>Q</i> Human health and social work activities	46	21	-	-	25	-	-	-	-	-	-
<i>R</i> Arts, entertainment and recreation	52	27	-	-	24	1	-	-	-	-	-
<i>S</i> Other service activities	104	70	-	-	34	-	-	-	-	-	-

**Graph 9. Registered enterprises according to legal form of organization, Q4 2017**

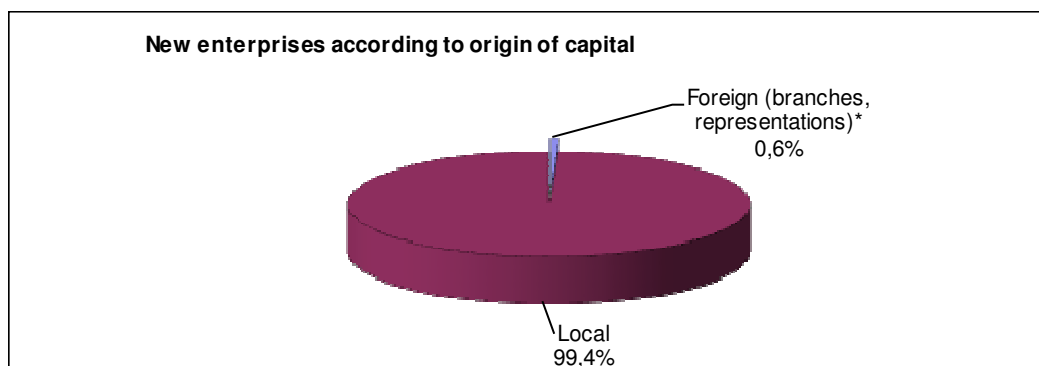


## 9 Registered enterprises according to origin of capital

**Table 9. Number of registered enterprises according to origin of capital in Q4 2017**

Category of number of employees	Total		reign (branches, representation)		Local	
	1921	100%	12	100,0%	1909	100%
1-4	1846	96,1%	12	100,0%	1834	96,1%
5-9	47	2,4%	-	-	47	2,5%
10-19	18	0,9%	-	-	18	0,9%
20-249	10	0,5%	-	-	10	0,5%
250+	-	-	-	-	-	-

**Graph 10. Structure of registered enterprises according to origin of capital in Q4 2017**

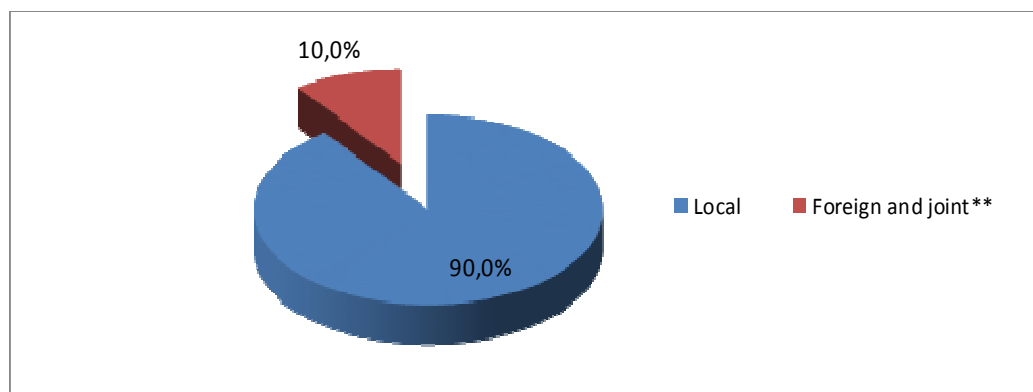


Note: The sign "\*" indicates that we are dealing only with foreign enterprises defined in page 8 (*Foreign companies* as defined by KBRA).

**Table 10. Number of registered enterprises according to ownership in Q4 2017**

Period	Total	National	Foreign and joint**		
			Total	Joint (Local + Foreign)	Foreign (Branches, representations)*
2017 - TM4	1.921	1.728	193	181	12

**Graph 11. Structure of registered enterprises according to ownership in Q4 2017**



Note: The sign "\*\*" in Table 11 and Graph 10 shows that we are dealing with a broader concept of definition of the origin of capital or ownership (registered enterprises with foreign and joint ownership).

## 10 Terminated enterprises

**Table 11. The number of terminated enterprises according to municipality and section of economic activity in Q4 2017**

Municipality	Section of economic activity																			
	Agriculture, forestry and fishing	Mining and quarrying	Manufacturing	Electricity, gas, steam and air conditioning supply	Water supply, sewage, waste management and remediation activities	Construction	Wholesale and retail trade, repair of motor vehicles and motorcycles	Transportation and storage	Accommodation and food service activities	Information and communication	Financial and insurance activities	Real estate activities	Professional, scientific and technical activities	Administrative and support service activities	Public administration and protection: compulsory social protection	Education	Human health and social work activities	Arts, entertainment and recreation	Other service activities	
Code and name	Total	A	B	C	D	E	F	G	H	I	J	K	L	M	N	O	P	Q	R	S
	<b>432</b>	<b>22</b>	<b>3</b>	<b>37</b>	<b>0</b>	<b>1</b>	<b>40</b>	<b>150</b>	<b>23</b>	<b>39</b>	<b>20</b>	<b>3</b>	<b>1</b>	<b>33</b>	<b>8</b>	<b>1</b>	<b>4</b>	<b>8</b>	<b>5</b>	<b>34</b>
01 Deçan	8	1	-	2	-	-	1	2	-	-	-	1	-	-	-	-	-	-	-	1
02 Gjakovë	24	3	1	1	-	1	-	7	1	2	1	-	-	1	3	-	-	-	1	2
03 Gillogoc	13	1	-	3	-	-	3	2	-	1	1	-	-	-	-	-	-	-	-	2
04 Gjilan	25	-	-	4	-	-	2	13	-	1	1	-	-	-	-	-	-	3	-	1
05 Dragash	9	1	-	1	-	-	-	3	1	1	-	-	-	-	1	-	-	-	-	1
06 Istog	5	-	-	1	-	-	-	3	-	1	-	-	-	-	-	-	-	-	-	-
07 Kaçanik	3	1	-	-	-	-	-	1	-	1	-	-	-	-	-	-	-	-	-	-
08 Klinë	4	2	-	-	-	-	-	1	1	-	-	-	-	-	-	-	-	-	-	-
09 F.Kosovë	15	-	-	-	-	-	3	3	4	1	3	-	-	1	-	-	-	-	-	-
10 Kamenicë	3	-	-	-	-	-	-	1	1	1	-	-	-	-	-	-	-	-	-	-
11 Mitrovicë	45	2	-	-	-	-	5	17	7	2	3	-	-	2	-	-	-	1	1	5
12 Leposaviq	-	-	-	-	-	-	-	-	-	-	-	-	-	-	-	-	-	-	-	-
13 Lipjan	5	-	-	-	-	-	1	2	-	-	-	-	-	1	-	-	-	-	-	1
14 Novobërdë	-	-	-	-	-	-	-	-	-	-	-	-	-	-	-	-	-	-	-	-
15 Obiliq	1	-	-	-	-	-	-	1	-	-	-	-	-	-	-	-	-	-	-	-
16 Rahovec	13	1	-	3	-	-	3	4	-	1	-	-	-	-	-	-	-	-	-	1
17 Pejë	24	1	-	5	-	-	3	6	-	2	2	-	1	2	-	-	-	-	-	2
18 Podujevë	14	2	-	1	-	-	2	4	-	1	-	-	-	-	-	-	1	1	-	2
19 Prishtinë	70	-	-	-	-	-	6	27	3	9	4	1	-	9	1	1	1	-	2	6
20 Prizren	65	1	1	10	-	-	3	24	3	5	2	1	-	7	1	-	-	-	-	7
21 Skenderaj	9	1	-	1	-	-	1	4	-	1	-	-	-	1	-	-	-	-	-	-
22 Shtime	4	-	-	-	-	-	-	3	-	-	-	-	-	1	-	-	-	-	-	-
23 Shtërpce	4	2	-	-	-	-	-	2	-	-	-	-	-	-	-	-	-	-	-	-
24 Suharekë	17	-	1	1	-	-	3	6	-	3	1	-	-	-	-	-	-	-	-	2
25 Ferizaj	26	1	-	3	-	-	1	9	1	4	1	-	-	3	-	-	-	2	1	-
26 Viti	9	-	-	-	-	-	1	4	1	-	-	-	-	2	1	-	-	-	-	-
27 Vushtrri	11	2	-	-	-	-	1	-	-	2	1	-	-	2	1	-	1	-	-	1
28 Zubin Potok	-	-	-	-	-	-	-	-	-	-	-	-	-	-	-	-	-	-	-	-
29 Zveqan	1	-	-	-	-	-	-	-	-	-	-	-	-	-	-	-	-	1	-	-
30 Malishevë	3	-	-	-	-	-	1	1	-	-	-	-	-	-	-	-	1	-	-	-
31 Juniku	-	-	-	-	-	-	-	-	-	-	-	-	-	-	-	-	-	-	-	-
32 Mamushë	-	-	-	-	-	-	-	-	-	-	-	-	-	-	-	-	-	-	-	-
33 Hani i Elezit	-	-	-	-	-	-	-	-	-	-	-	-	-	-	-	-	-	-	-	-
34 Graçanica	1	-	-	-	-	-	-	-	-	-	-	-	-	1	-	-	-	-	-	-
35 Ranillug	-	-	-	-	-	-	-	-	-	-	-	-	-	-	-	-	-	-	-	-
36 Partesh	-	-	-	-	-	-	-	-	-	-	-	-	-	-	-	-	-	-	-	-
37 Kllokot	-	-	-	-	-	-	-	-	-	-	-	-	-	-	-	-	-	-	-	-
38 North. Mitro.	1	-	-	1	-	-	-	-	-	-	-	-	-	-	-	-	-	-	-	-

# Kosovo Agency of Statistics

## *short description*

**Kosovo Agency of Statistics** is a professional institution which deals with collection, processing and publication of official statistical data. As such acts since 1948 and has passed through several historical stages, structured according to state regulation of those times.

On 2 August 1999, the Agency has resumed his professional work (after nine years of interruption of all statistical series detrimental to the interest of Kosovo), as an independent institution under the Ministry of Public Administration. Since 12.12.2011 the Agency operates in the frames of the Prime Minister's Office. Office is funded by the Kosovo Consolidated Budget, but also by donors for specific projects and for technical professional support.

**Kosovo Agency of Statistics** acts according to the Law No. 04/L-036 which entered into force on 12.12.2011. Programme of Official Statistics 2013/2017 is in implementation for the development of statistical system in correlation with the European Union statistics (EUROSTAT).

**Kosovo Agency of Statistics** has this organizational structure: production departments; (Department of Economic statistics and National Accounts, Department of Agriculture and Environment statistics and Department of Social statistics. **Support Departments**; Department of Methodology and Information Technology, Department of Policy Planning, Coordination and Communication, Department of Census and survey and Department of Administration. **Within the Agency are also established Regional Offices**; Gjakove, Gjilan, Mitrovica, Peja, Prizren, Pristina and Ferizaj

Number of employees and budget are still limited. In KAS are employed in total 143 workers, of whom 98 (68,58 %) at the headquarters of the Agency, while in the Regional Offices, 45 (31,5%). Agency's educational qualifying structure is as follows: 61,7% with university education, 15,4% with with non-tertiary education, and 17.5% with secondary education.

We have professional and technical cooperation with all Ministries of the Government of Kosovo, especially with the Ministry of Economy and Finance, Central Bank of Kosovo, with international institutions, EUROSTAT, International Monetary Fund, World Bank, Sweden's SIDA, DFID, UNFPA, UNDP, UNVEF, and with the statistical institutions of the countries in the region.

**Kosovo Agency of Statistics** almost completely covers the territory of Kosovo, based on the statistical structure of the enumeration areas as the basic unit and sole in the country from which it gets first hand information. All surveys conducted in the field use the extension of the samples in these enumeration areas but also a statistical methodology according to international recommendations. During the collection of statistical data and reports from reporting entities are involved professionals, technicians, administrators, servants of the country offices, field enumerators from regional offices, etc.

In 2011, the project of Population Census , Households and Dwellings was successfully implemented, and in 2014 was successfully carried out the Agriculture Census. The result obtained from these censuses will have an important role in the development policies.

**The mission of the Agency**; to meet the needs of users with qualitative statistical data, objective, in time and space so that users have reliable base to conduct regular analysis in the interest of planning and project development at the municipal and country level. To support government institutions, scientific institutes, research academies, businesses in order to provide proper information for decision-makers and other users in Kosovo.

- **Address: KOSOVO AGENCY OF STATISTICS**  
Street. "Zenel Salihu", No. 4, 10000 Pristina
- **Telephone:** +381 (0) 38 200 31 129  
CEO: +381 (0) 38 200 31 112
- **Fax::** +381 (0) 38 235 033
- **E-mail:** [infoask@rks-gov.net](mailto:infoask@rks-gov.net)
- **Web:** <http://ask.rks-gov.net>