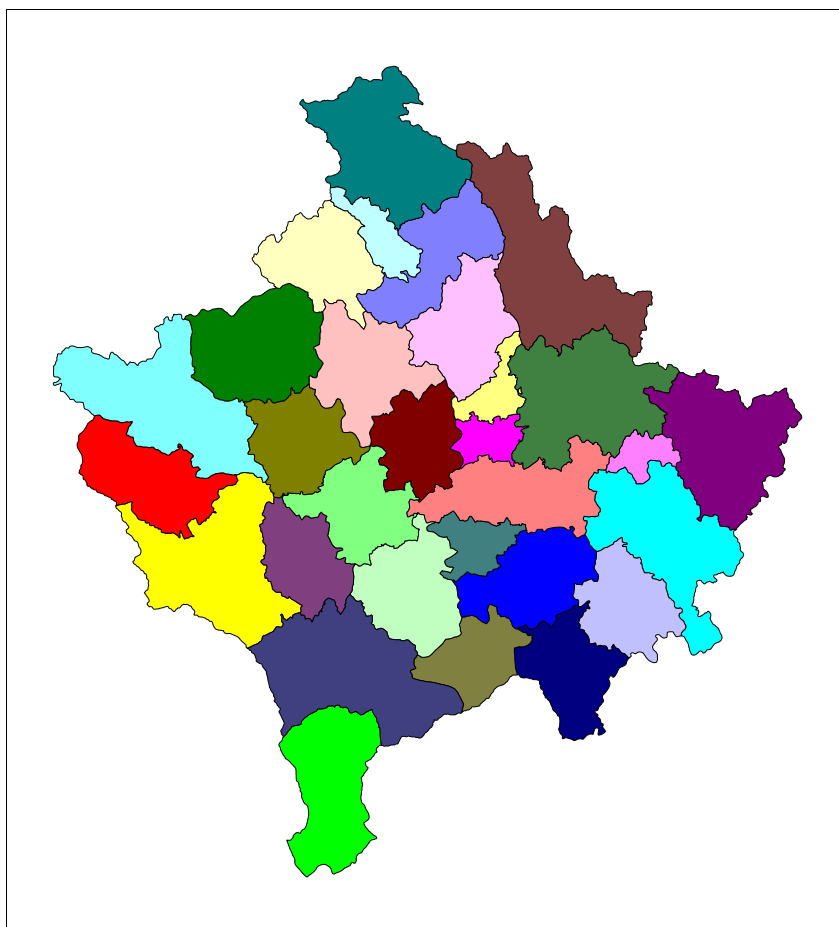




Institucionet e Përkohshme Vetëqeverisëse / Privremena Institucija Samouprave / Provisional Institutions of Self Government
Çeveria e Kosovës / Vlada Kosova / Government of Kosovo
Ministria e Shërbimeve Publike / Ministarstvo javnih službi / Ministry of Public Services

Series 2: Agriculture and Environment Statistics

Output Price Index and Prices in Agriculture 2005 (January- December 2005)



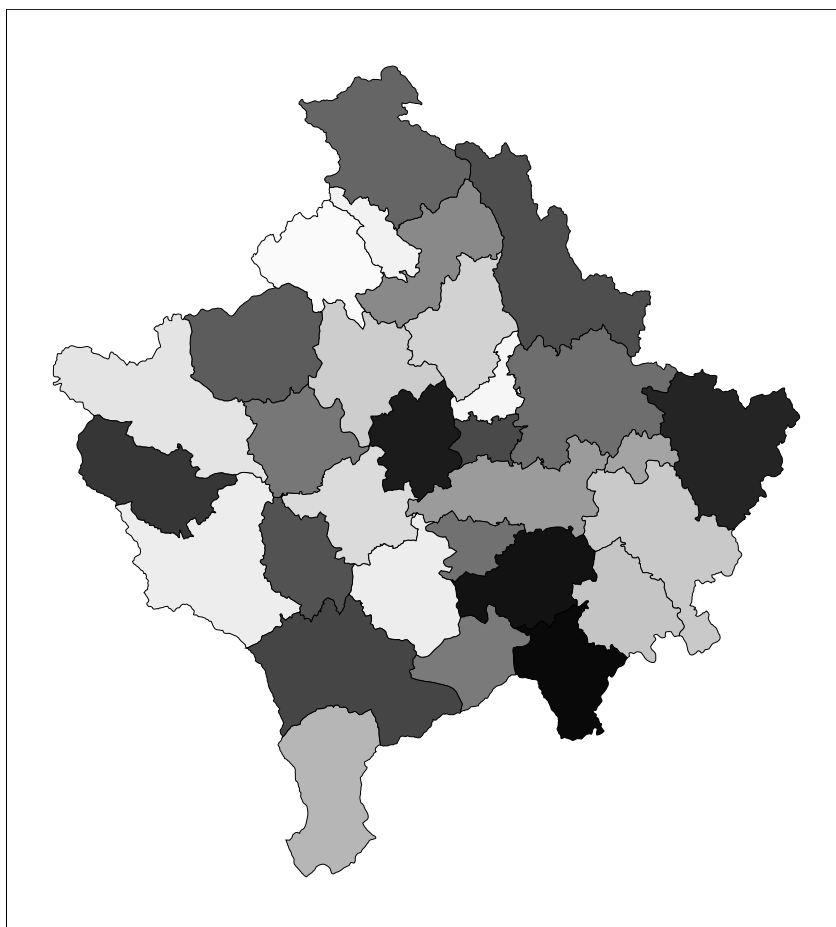
Enti i Statistikës së Kosovës
Zavod za Statistiku Kosova
Statistical Office of Kosovo



Institucionet e Përkohshme Vetëqeverisëse / Privremena Institucija Samouprave / Provisional Institutions of Self Government
Qeveria e Kosovës / Vlada Kosova / Government of Kosovo
Ministria e Shërbimeve Publike / Ministarstvo javnih službi / Ministry of Public Services

Series 2: Agriculture and Environment Statistics

Output Price Index and Prices in Agriculture 2005 (January- December 2005)



Enti i Statistikës së Kosovës
Zavod za Statistiku Kosova
Statistical Office of Kosovo

Publisher: Statistical Office of Kosovo (SOK)

Publication date: October 2007

© Statistical Office of Kosovo

Reproduction is authorized provided the source is acknowledged.

Printed by: K.G.T, Pristine, Kosovo

A great deal of information is available on Internet,
which can be accessed on the SOK Web-site: www.ks-gov.net/esk

P r e f a c e

Agriculture and Environment Statistics Department started to collect data on prices for agriculture products in November 2003. In the beginning, prices were collected for a limited number of items. At the moment prices for 44 different items concerning agricultural output are collected. The plan for the future is to both increase the number of products and also to complement it with an Input Price Index.

This is the third publication on Output Price Index and Average Absolute Prices for agriculture products produced by Statistical Office of Kosovo (SOK). In this publication, Output Price Index and prices for some major agriculture products are presented.

SOK is grateful to the Swedish International Development Cooperation Agency (SIDA) for their support of build up the agro monetary statistics system. SOK also is grateful for their corporation of all co-workers at the regional offices, other respondents of data collection as: agriculture farms, industrial and trade enterprises etc.

Especially grateful to Swedish price statistics experts Mr. Anders Grönvall, Mr. Tomas Eriksson and Statistics Sweden Long-term consultant Mrs. Milva Ekonomi and others who directly or indirectly assisted on finalisation of this publication.

This publication was prepared by following personnel from Agriculture and Environment Statistics Department at SOK.

Bajrush Qevani - Director of Department,
Haki Kurti – Chief of Division,
Violeta Arifi – Gashi – Chief of Section,
Habib Strana - Chief of Section,
Rexhep Fejzullahu – Senior Officer

Suggestions, proposals and remarks for this publication are welcome and will help us to have more effective publications for users.

October, 2007

Chief Executive in SOK
Avni Kastrati

Abbreviations and Acronyms

SOK	Statistical Office of Kosovo
MPS	Ministry of Public Services
EAA	Economic Accounts for Agriculture
API	Agriculture Price Index
EU	European Union
SIDA	Swedish International Development Cooperation Agency

Key to symbols

- Zero
- .. Data not available
- . Not applicable
- 0 Magnitude less than half of unit
- ‰ Promile

Contents

	Page
Output Price Index for agriculture products 2005	5
Monthly Output Price Index for agriculture products	7
Annual Output Price Index.....	9
Changes in Output Price Index, percent.....	10
Absolute average prices in euro for some major agriculture products January - December 2005.....	12
Price changes for some major agriculture products 2005/2004	15
Methodology	17
Questionnaire	18

Output Price Index for agriculture products 2005

The publication includes data from January to December 2005. To make comparisons and see changes there are also data from year 2004 and the last two months of year 2003, (November and December 2003).

This publication is based on collection of prices for domestic products in Kosovo. The price collection was carried out at markets, farms and other places where prices on agriculture products are available.

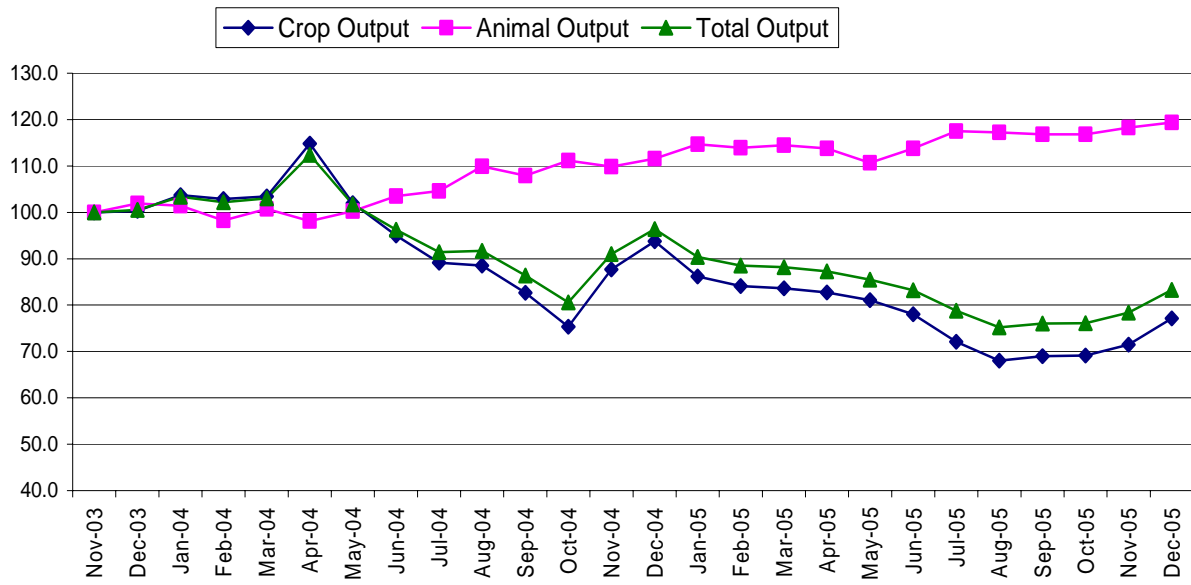
The products which make up the base for the Output Price Index are divided into two main groups: Crop- and Animal Output. Within Crop Output, prices are collected under the following groups; Cereals, Industrial crops, Forage plants, Vegetables, Potatoes and Fruits. Within Animal Output, prices are collected for Animals and Animal Product. For Animals prices are collected for four categories; Cattle, Sheep, Pigs and Poultry. These prices are based on the live weight of the animals. Within animal products prices are collected for Milk, Eggs and Honey. All prices are calculated in Euro and the measurement unit is in kg, litre and piece.

Figure 1 shows monthly Output Price Index from November 2003 to December 2005 for Total Output as well as for Crop- and Animal Output with November 2003 as base month (November 2003 =100).

The Output Price Index for Animal Output has increased with 19.4 % during the period. The Output Price Index for Crop Output shows much more movements, mostly due to seasonal or yield effects. The Index for Crop Output has decreased with 22.8 % during the period. Since the Crop Output has higher influence on the Total Output Index, this has also decreased (16.7 %) during the period.

In 2005 the annual index for Animal Output has increased with 10.9 % compared with 2004. On the other hand, the index for Crop Output has decreased with 17.2 % between 2004 and 2005. Total Output Index has also decreased (12.6 %).

Figure 1. Monthly Output Price Index, November 2003 - December 2005 (Nov. 2003 = 100)



Monthly Output Price Index for agriculture products

Table 1: Monthly Output Price Index, January – Jun 2005 (Nov. 2003 = 100)

Code	Groups	Weight in ‰	Nën-03	2005					
				Jan	Feb	Mar	Apr	May	Jun
0 1	Cereals	96	100,0	81,0	74,8	75,2	74,3	72,9	71,6
0 1.1	Wheat	54	100,0	70,4	61,6	62,9	62,9	62,3	62,3
0 1.3	Barley	19	100,0	100,0	100,0	100,0	100,0	100,0	100,0
0 1.5	Maize	23	100,0	90,1	84,5	83,2	79,5	75,2	69,6
0 2	Industrial crops	4	100,0	100,0	100,0	100,0	100,0	100,0	100,0
0 2.1.2	Sunflower	4	100,0	100,0	100,0	100,0	100,0	100,0	100,0
0 3	Forage plants	194	100,0	79,5	77,5	74,5	72,9	67,0	60,6
0 3.1	Fodder maize	85	100,0	90,1	84,5	83,2	79,5	75,2	69,6
0 3.9	Other forage plants	109	100,0	71,2	72,0	67,7	67,6	60,6	53,5
03.9.1	Hay	78	100,0	77,0	74,3	72,6	73,5	64,6	56,6
03.9.2	Straw	31	100,0	56,6	66,3	55,4	53,0	50,6	45,8
0 4	Vegetables	336	100,0	91,5	90,3	90,8	89,8	85,2	82,7
0 4.1	Fresh vegetables	336	100,0	91,5	90,3	90,8	89,8	85,2	82,7
0 4.1.2	Tomatoes	48	100,0	134,1	134,1	134,1	134,1	113,0	86,2
0 4.1.9	Other fresh vegetables	287	100,0	84,4	82,9	83,5	82,3	80,5	82,1
0 4.1.9.1	Cabbage	17	100,0	130,0	145,0	145,0	145,0	145,0	295,0
0 4.1.9.3	Spinach	1	100,0	100,0	100,0	129,8	83,0	72,3	93,6
0 4.1.9.4	Cucumbers	6	100,0	132,8	132,8	132,8	132,8	58,1	40,0
0 4.1.9.6	Onions	19	100,0	64,1	62,8	62,8	62,8	62,8	69,7
0 4.1.9.7	Beans	90	100,0	88,6	81,3	82,9	79,7	82,1	79,7
0 4.1.9.9.9	Other fresh vegetable;other	154	100,0	77,0	77,0	77,0	77,0	75,3	62,5
0 5	Potatoes	71	100,0	62,0	60,8	60,0	60,0	80,0	73,2
0 6	Fruits	152	100,0	97,4	95,3	95,3	95,3	95,3	95,3
0 6.1	Fresh fruits	78	100,0	108,2	104,2	104,2	104,2	104,2	104,2
0 6.1.1	Apple	28	100,0	91,7	80,6	80,6	80,6	80,6	80,6
0 6.1.2	Pears	5	100,0	108,0	108,0	108,0	108,0	108,0	108,0
0 6.1.9	Other fresh fruit	45	100,0	118,6	118,6	118,6	118,6	118,6	118,6
0 6.1.9.2	Plums	15	100,0	101,3	101,3	101,3	101,3	101,3	101,3
0 6.1.9.4	Nuts and dried fruit	30	100,0	127,0	127,0	127,0	127,0	127,0	127,0
0 6.4	Grapes	74	100,0	85,9	85,9	85,9	85,9	85,9	85,9
10	Crop Output	853	100,0	86,2	84,1	83,6	82,7	81,1	78,0
11	Animals	108	100,0	120,0	118,7	119,5	118,7	114,9	119,1
11.1	Cattle	85	100,0	121,6	120,1	121,6	120,6	117,0	121,6
11.2	Pigs	9	100,0	105,7	105,7	105,7	105,7	94,0	95,9
11.4	Sheep	11	100,0	114,7	112,7	107,8	107,8	107,8	110,8
11.5	Poultry	3	100,0	134,0	136,9	139,7	139,7	140,3	143,1
12	Animal Products	39	100,0	100,2	100,9	100,9	100,5	99,3	99,1
12.1	Milk	33	100,0	99,5	100,5	100,5	99,5	98,0	98,0
12.2	Eggs	1	100,0	114,8	107,0	109,7	116,4	119,2	111,1
12.9	Other animal products	6	100,0	102,1	102,1	102,1	104,3	104,3	104,3
13	Animal Output	147	100,0	114,7	113,9	114,5	113,8	110,7	113,8
14	Total Output	1000	100,0	90,4	88,5	88,2	87,3	85,5	83,2

Table 2: Monthly Output Price Index, July – December 2005 (Nov. 2003 =100)

Code	Groups	Weight in ‰	Nën-03	2005					
				Jul	Aug	Sep	Oct	Nov	Dec
0 1	Cereals	96	100,0	76,2	72,3	72,3	71,5	70,8	70,8
0 1.1	Wheat	54	100,0	61,0	61,6	61,6	61,6	61,6	61,6
0 1.3	Barley	19	100,0	100,0	100,0	100,0	100,0	100,0	100,0
0 1.5	Maize	23	100,0	91,9	73,9	73,9	70,8	67,7	67,7
0,2	Industrial crops	4	100,0	100,0	100,0	100,0	100,0	100,0	100,0
0 2.1.2	Sunflower	4	100,0	100,0	100,0	100,0	100,0	100,0	100,0
0,3	Forage plants	194	100,0	68,5	63,5	63,7	62,4	62,4	63,5
0 3.1	Fodder maize	85	100,0	91,9	73,9	73,9	70,8	67,7	67,7
0 3.9	Other forage plants	109	100,0	50,0	55,4	55,7	55,7	58,2	60,1
03.9.1	Hay	78	100,0	52,2	60,2	60,2	60,2	64,6	66,4
03.9.2	Straw	31	100,0	44,6	43,4	44,6	44,6	42,2	44,6
0 4	Vegetables	336	100,0	61,9	54,8	56,9	61,3	68,0	79,0
0 4.1	Fresh vegetables	336	100,0	61,9	54,8	56,9	61,3	68,0	79,0
0 4.1.2	Tomatoes	48	100,0	49,8	41,8	59,4	70,9	92,0	111,1
0 4.1.9	Other fresh vegetables	287	100,0	64,0	57,0	56,5	59,7	63,9	73,6
0 4.1.9.1	Cabbage	17	100,0	160,0	120,0	120,0	110,0	100,0	115,0
0 4.1.9.3	Spinach	1	100,0	85,1	87,2	87,2	119,1	108,5	108,5
0 4.1.9.4	Cucumbers	6	100,0	27,0	45,3	51,8	59,9	80,0	137,9
0 4.1.9.6	Onions	19	100,0	66,7	71,8	70,5	64,9	67,9	69,2
0 4.1.9.7	Beans	90	100,0	86,2	93,5	88,6	93,5	89,4	92,7
0 4.1.9.9.9	Other fresh vegetable;other	154	100,0	41,1	27,0	28,9	33,1	43,4	55,4
0 5	Potatoes	71	100,0	65,0	60,8	62,8	64,0	60,0	66,0
0 6	Fruits	152	100,0	99,0	102,4	102,2	94,7	96,2	98,8
0 6.1	Fresh fruits	78	100,0	111,5	118,2	117,7	113,8	114,0	115,0
06.1.1	Apple	28	100,0	80,6	105,6	108,3	97,2	97,2	100,0
06.1.2	Pears	5	100,0	102,3	75,0	52,3	53,4	55,7	56,8
06.1.9	Other fresh fruit	45	100,0	131,9	130,9	130,9	131,0	131,0	131,0
06.1.9.2	Plums	15	100,0	141,8	138,9	138,9	153,3	153,3	153,3
06.1.9.4	Nuts and dried fruit	30	100,0	127,0	127,0	127,0	120,1	120,1	120,1
0 6.4	Grapes	74	100,0	85,9	85,9	85,9	74,6	77,5	81,7
10	Crop Output	853	100,0	72,1	68,0	69,0	69,1	71,5	77,1
11	Animals	108	100,0	124,8	124,0	123,5	123,6	125,6	127,6
11.1	Cattle	85	100,0	128,9	127,8	126,8	126,8	129,9	132,0
11.2	Pigs	9	100,0	94,2	94,2	94,2	94,2	95,3	95,3
11.4	Sheep	11	100,0	111,8	112,7	115,7	116,7	111,1	114,7
11.5	Poultry	3	100,0	143,1	143,1	143,1	143,1	143,1	143,1
12	Animal Products	39	100,0	97,8	98,3	98,3	98,3	98,3	97,0
12.1.	Milk	33	100,0	96,4	97,0	97,0	97,0	97,0	95,4
12.2	Eggs	1	100,0	109,8	111,8	111,8	109,8	109,8	111,8
12.9	Other animal products	6	100,0	104,3	104,3	104,3	104,3	104,3	104,3
13	Animal Output	147	100,0	117,5	117,2	116,8	116,8	118,3	119,4
14	Total Output	1000	100,0	78,8	75,2	76,0	76,1	78,4	83,3

Annual Output Price Index

Table 3: Annual Output Price Index, 2004 and 2005 (Nov. 2003=100).

Code	Groups	Weight in ‰	2004	2005	2005/2004 % Change
01	Cereals	96	95,0	73,6	-22,5
01.1	Wheat	54	89,9	62,6	-30,4
01.3	Barley	19	100,0	100,0	0,0
01.5	Maize	23	102,6	77,3	-24,6
02	Industrial Crops	4	100,0	100,0	0,0
02.1.2	Sunflower	4	100,0	100,0	0,0
03	Forage Plants	194	101,9	68,0	-33,3
03.1	Fodder maize	85	102,6	77,3	-24,6
03.9	Other forage plants	109	101,3	60,7	-40,2
03.9.1	Hay	78	100,1	65,2	-34,9
03.9.2	Straw	31	104,5	49,3	-52,8
04	Vegetables	336	83,6	76,0	-9,0
04.1	Fresh vegetables	336	83,6	76,0	-9,0
041.2	Tomatoes	48	79,7	96,7	21,4
04.1.9	Other fresh vegetables	287	82,7	72,5	-12,3
04.1.9.1	Cabbage	17	150,3	144,2	-4,0
04.1.9.3	Spinach	1	104,1	97,9	-6,0
04.1.9.4	Cucumbers	6	77,9	85,9	10,3
04.1.9.6	Onions	19	97,3	66,3	-31,8
04.1.9.7	Beans	90	88,3	86,5	-2,0
04.1.9.9.9	Other fresh vegetables: other	154	69,7	56,2	-19,2
05	Potatoes	71	98,6	64,6	-34,5
06	Fruits	152	97,6	97,3	-0,3
06.1	Fresh fruit	78	98,4	110,0	11,8
06.1.1	Apple	28	99,1	90,3	-8,9
06.1.2	Pear	5	96,9	86,9	-10,3
06.1.9	Other fresh fruit	45	98,1	124,9	27,3
06.1.9.2	Plums	15	101,8	123,9	21,7
06.1.9.4	Nuts and dried fruit	30	96,4	125,3	29,9
06.4	Grapes	74	96,7	83,9	-13,2
10	Crop Output	853	92,8	76,9	-17,2
11	Animals	108	106,9	121,7	13,9
11.1	Cattle	85	106,5	124,6	16,9
11.2	Pigs	9	104,3	98,3	-5,7
11.4	Sheep	11	110,9	112,0	1,0
11.5	Poultry	3	120,5	141,0	17,1
12	Animal Products	39	99,6	99,1	-0,5
12.1	Milk	33	98,9	98,0	-0,9
12.2	Eggs	1	107,1	111,9	4,5
12.9	Other animal products	6	102,7	103,7	1,0
13	Animal Output	147	104,9	116,4	10,9
14	Total Output	1000	94,6	82,7	-12,6

Changes in Output Price Index, percent

Table 4: Changes in Output Price Index for same month, January - Jun 2005/2004, percent

Code	Groups	Weight in %	Jan-05 / Jan-04 % change	Feb-05 / Feb-04 % change	Mar-05 / Mar-04 % change	Apr-05 / Apr-04 % change	May-05 / May-04 % change	Jun-05 / Jun-04 % change
0 1	Cereals	96	-19,6	-24,4	-26,2	-30,9	-28,9	-29,8
0 1.1	Wheat	54	-29,6	-37,2	-39,0	-41,2	-37,7	-36,5
0 1.3	Barley	19	0,0	0,0	0,0	0,0	0,0	0,0
0 1.5	Maize	23	-12,7	-15,5	-17,3	-31,2	-32,0	-38,5
0 2	Industrial crops	4	0,0	0,0	0,0	0,0	0,0	0,0
0 2.1.2	Sunflower	4	0,0	0,0	0,0	0,0	0,0	0,0
0 3	Forage plants	194	-24,3	-29,0	-33,7	-36,9	-39,2	-46,2
0 3.1	Fodder maize	85	-12,7	-15,5	-17,3	-31,2	-32,0	-38,5
0 3.9	Other forage plants	109	-33,2	-38,1	-44,3	-41,4	-44,8	-52,3
03.9.1	Hay	78	-23,0	-34,4	-41,4	-35,2	-39,7	-49,6
03.9.2	Straw	31	-53,9	-46,6	-52,1	-56,0	-56,7	-59,1
0 4	Vegetables	336	-9,2	-9,7	-8,9	-28,5	-10,7	8,1
0 4.1	Fresh vegetables	336	-9,2	-9,7	-8,9	-28,5	-10,7	8,1
0 4.1.2	Tomatoes	48
0 4.1.9	Other fresh vegetables	287	-16,3	-17,1	-16,2	-34,5	-15,6	7,3
0 4.1.9.1	Cabbage	17	-7,1	-9,4	-9,4	-9,4	-9,4	61,2
0 4.1.9.3	Spinach	1	-13,0	-13,0	-18,7	30,0	-17,1	0,0
0 4.1.9.4	Cucumbers	6
0 4.1.9.6	Onions	19	-49,0	-51,7	-51,7	-51,7	-51,7	-24,4
0 4.1.9.7	Beans	90	-10,7	-11,5	-8,1	-10,9	-6,5	-3,9
0 4.1.9.9.9	Other fresh vegetable;other	154	-18,2	-18,2	-18,2	-46,0	-14,7	6,6
0 5	Potatoes	71	-48,3	-44,9	-43,4	-42,7	-29,8	-35,8
0 6	Fruits	152	-5,1	-4,8	-4,8	-4,8	-4,8	-4,8
0 6.1	Fresh fruits	78	4,3	5,5	5,5	5,5	5,5	5,5
06.1.1	Apple	28	-15,4	-14,7	-14,7	-14,7	-14,7	-14,7
06.1.2	Pears	5	6,7	6,7	6,7	6,7	6,7	6,7
06.1.9	Other fresh fruit	45	17,1	17,1	17,1	17,1	17,1	17,1
06.1.9.2	Plums	15
06.1.9.4	Nuts and dried fruit	30	25,5	25,5	25,5	25,5	25,5	25,5
0 6.4	Grapes	74	-15,3	-15,3	-15,3	-15,3	-15,3	-15,3
10	Crop Output	853	-16,8	-18,2	-19,1	-27,9	-20,4	-18,0
11	Animals	108	17,2	21,8	19,1	22,0	14,9	12,5
11.1	Cattle	85	19,8	26,1	22,9	25,8	19,5	15,7
11.2	Pigs	9	0,0	5,7	5,7	5,7	-11,1	-9,3
11.4	Sheep	11	7,8	0,0	-3,5	1,9	-3,5	-0,9
11.5	Poultry	3
12	Animal Products	39	1,5	0,4	-0,7	0,0	-1,5	2,3
12.1	Milk	33	1,6	0,5	-1,0	-0,5	-2,5	2,1
12.2	Eggs	1	10,9	0,7	4,7	6,1	12,9	9,7
12.9	Other animal products	6	0,0	0,0	0,0	2,1	2,1	2,1
13	Animal Output	147	13,1	15,9	13,7	16,0	10,5	9,9
14	Total Output	1000	-12,5	-13,4	-14,4	-22,3	-16,0	-13,5

Table 5: Changes in Output Price Index for same month, Jul - Dec 2005/2004, percent

Code	Groups	Weight in ‰	Jul-05 / Jul-04 % change	Aug-05 / Aug-04 % change	Sep-05 / Sep-04 % change	Oct-05 / Oct-04 % change	Nov-05 / Nov-04 % change	Dec-05 / Dec-04 % change
0 1	Cereals	96	-23,2	-25,7	-12,0	-11,8	-15,0	-14,6
0 1.1	Wheat	54	-35,3	-31,0	-15,5	-14,8	-14,8	-14,0
0 1.3	Barley	19	0,0	0,0	0,0	0,0	0,0	0,0
0 1.5	Maize	23	-16,4	-35,0	-16,8	-17,4	-28,8	-28,8
0 2	Industrial crops	4	0,0	0,0	0,0	0,0	0,0	0,0
0 2.1.2	Sunflower	4	0,0	0,0	0,0	0,0	0,0	0,0
0 3	Forage plants	194	-35,4	-40,5	-32,2	-22,7	-26,7	-25,7
0 3.1	Fodder maize	85	-16,4	-35,0	-16,8	-17,4	-28,8	-28,8
0 3.9	Other forage plants	109	-51,4	-45,3	-43,2	-27,3	-24,6	-22,8
0 3.9.1	Hay	78	-48,7	-40,9	-40,9	-21,8	-13,1	-10,7
0 3.9.2	Straw	31	-58,0	-56,6	-50,0	-41,3	-50,0	-48,6
0 4	Vegetables	336	-6,6	-4,6	-1,4	9,0	-13,1	-11,0
0 4.1	Fresh vegetables	336	-6,6	-4,6	-1,4	9,0	-13,1	-11,0
0 4.1.2	Tomatoes	48	..	-28,8	1,5	21,7	-13,9	-16,4
0 4.1.9	Other fresh vegetables	287	-3,5	-0,8	-3,3	5,9	-14,6	-9,3
0 4.1.9.1	Cabbage	17	-20,0	-31,4	-20,0	-8,3	-13,0	43,8
0 4.1.9.3	Spinach	1	-11,1	-2,4	-34,9	19,1	13,3	8,5
0 4.1.9.4	Cucumbers	6	..	-21,1	-4,5	7,2	-10,2	3,9
0 4.1.9.6	Onions	19	-19,3	3,7	10,0	-4,5	-7,0	-5,3
0 4.1.9.7	Beans	90	1,9	16,2	-0,9	7,5	-0,9	7,5
0 4.1.9.9.9	Other fresh vegetable;other	154	7,5	-6,8	-0,1	12,0	-28,6	-28,1
0 5	Potatoes	71	-43,0	-38,0	-21,5	-23,8	-16,7	0,0
0 6	Fruits	152	-1,0	2,4	-1,3	16,8	7,0	6,1
0 6.1	Fresh fruits	78	12,9	19,6	11,4	24,8	29,1	15,1
0 6.1.1	Apple	28	-14,7	11,8	-7,1	-2,8	-5,4	0,0
0 6.1.2	Pears	5	1,1	-25,8	-30,3	-33,8	-45,6	-40,5
0 6.1.9	Other fresh fruit	45	30,2	29,3	28,1	50,8	68,9	30,5
0 6.1.9.2	Plums	15	..	37,1	33,3	51,4	51,4	51,4
0 6.1.9.4	Nuts and dried fruit	30	25,5	25,5	25,5	59,1	81,9	20,1
0 6.4	Grapes	74	-15,3	-15,3	-15,3	6,0	-15,4	-4,9
10	Crop Output	853	-19,2	-19,4	-12,7	-3,5	-12,7	-10,7
11	Animals	108	15,1	7,0	9,1	8,0	11,6	11,4
11.1	Cattle	85	19,0	8,8	11,3	9,8	15,1	14,3
11.2	Pigs	9	-10,9	-10,9	-10,9	-10,9	-9,9	-9,9
11.4	Sheep	11	0,0	0,9	3,5	4,4	-0,6	2,6
11.5	Poultry	3	..	23,4	20,5	17,7	15,0	17,7
12	Animal Products	39	3,8	3,8	3,5	-5,1	-5,3	-7,6
12.1	Milk	33	3,8	4,4	4,4	-6,4	-6,4	-9,2
12.2	Eggs	1	14,6	-3,0	-2,5	-1,3	0,4	3,8
12.9	Other animal products	6	2,1	2,1	0,0	2,1	0,0	0,0
13	Animal Output	147	12,4	6,3	7,8	4,7	7,3	6,7
14	Total Output	1000	-13,9	-14,7	-8,8	-1,7	-9,0	-7,5

Absolute average prices in euro for some major agriculture products January - December 2005

Table 6: Absolute average prices in euro for some major agriculture products January - Jun 2005

Code	Products	Quantity	2005					
			Jan	Feb	Mar	Apr	May	Jun
0 1.1	Wheat ¹	1 kg	0.16	0.14	0.14	0.14	0.14	0.14
0 1.3.2	Barly ²	1 kg	0.19	0.19	0.19	0.19	0.19	0.19
0 1.5	Maize ³	1 kg	0.21	0.19	0.19	0.18	0.17	0.16
0 2.1.2	Sunflower ⁴	1 kg	0.20	0.20	0.20	0.20	0.20	0.20
03.9.1	Hay ⁵	1 kg	0.12	0.12	0.12	0.12	0.10	0.09
03.9.2	Straw ⁶	1 kg	0.07	0.08	0.07	0.06	0.06	0.05
0 3.9.9	Lucern ⁷	1 kg	0.13	0.14	0.14
0 4.1.9.1	Cabbage ⁸	1 kg	0.19	0.21	0.42
0 4.1.9.3	Spinach ⁹	1 kg	0.87	0.56	0.49	0.63
0 4.1.9.6	Onion ¹⁰	1 kg	0.36	0.35	0.35	0.35	0.35	0.39
0 4.1.9.7	Beans ¹¹	1 kg	1.56	1.43	1.46	1.40	1.44	1.40
0 4.1.9.9.9.1	Pepper ¹²	1 Kg	1.21	1.00
0 4.1.2	Tomatoes ¹³	1 kg	0.98	0.75
0 4.1.9.4	Cucumber ¹⁴	1 kg	0.51	0.35
0 4.1.9.9.9.2	Watermelon ¹⁵	1 kg
0 5	Potatoes ¹⁶	1 kg	0.22	0.22	0.21	0.21	0.29	0.26
0 6.1.1	Apple ¹⁷	1 kg	0.47	0.41
0 6.1.2	Pear ¹⁸	1 kg	1.36
0 6.1.9.2	Plums ¹⁹	1 kg
0 6.1.9.4	Chestnuts ²⁰	1 kg	1.01
0 6.4	Grape ²¹	1 kg
11.1	Cattle ²²	1 kg	1.69	1.66	1.69	1.67	1.62	1.69
11.2	Pigs ²³	1 kg	1.85	1.85	1.85	1.85	1.64	1.68
11.4	Sheep ²⁴	1 kg	1.67	1.64	1.57	1.57	1.57	1.61
11.5	Hens ²⁵	1 pieces	3.95	4.03	4.12	4.12	4.13	4.22
12.1	Milk ²⁶	1 kg	0.28	0.28	0.28	0.28	0.28	0.28
12.9	Honey ²⁷	1 kg	6.86	6.86	6.86	7.00	7.00	7.00
12.2	Eggs ²⁸	30 pieces	2.38	2.22	2.27	2.41	2.47	2.30

- 1 1 Wheat – is domestic, 2 Barley for production of beer, 3 Maize – Hybrid 448
4 Sunflower
5 Hay produced in meadow, 6 Wheat straw (Stubble wheat), 7 Lucerne
8 Cabbage- variety, (Hybrid 4)
9 Spinach- Matador
10 Onions-are second quality
11 Beans-are second quality
12 Pepper- Variety Sombork
13 Tomatoes- Variety Arleta
14 Cucumber- Variety Cornishon
15 Watermelon– is domestic product
16 Potatoes- Variety Condor Canebeck
17 Apple –variety Ida red,
18 Pears-variety autochthones,
19. Plums–variety Stanley
20 Chestnuts – domestic product
21 Grapes-variety Hamburg
22 Live weight per 1kg, for heifers and bulls aged 18-22 months, domestic pedigree
23 Live weight per 1kg, for pigs aged 10-12 months domestic pedigree
24 Live weight per 1kg, for sheep domestic pedigree (white, mug), aged ,older than 12 months
25 Hens– domestic (18 weeks old)
26 Milk –Price for 1litre cow milk with 3.2% fat
27 Honey domestic product
28 Price for 30 pieces of eggs, medium class of quality

Table 7: Absolute average prices in euro for some major agriculture products July - Dec 2005

Code	Products	Quantity	2005					
			Jul	Aug	Sep	Oct	Nov	Dec
0 1.1	Wheat ¹	1 kg	0.14	0.14	0.14	0.14	0.14	0.15
0 1.3.2	Barly ²	1 kg	0.19	0.19	0.19	0.19	0.19	0.19
0 1.5	Maize ³	1 kg	0.21	0.17	0.17	0.16	0.16	0.16
0 2.1.2	Sunflower ⁴	1 kg	0.20	0.20	0.20	0.20	0.20	0.20
03.9.1	Hay ⁵	1 kg	0.08	0.10	0.10	0.10	0.10	0.11
03.9.2	Straw ⁶	1 kg	0.05	0.05	0.05	0.05	0.05	0.05
0 3 9 9	Lucern ⁷	1 kg	0.13	0.13	0.13	0.13	0.13	0.14
0 4.1.9.1	Cabbage ⁸	1 kg	0.23	0.17	0.17	0.16	0.14	0.16
0 4.1.9.3	Spinach ⁹	1 kg	0.57	0.59	0.59	0.80	0.73	0.73
0 4.1.9.6	Onion ¹⁰	1 kg	0.37	0.40	0.39	0.36	0.38	0.39
0 4.1.9.7	Beans ¹¹	1 kg	1.51	1.64	1.56	1.64	1.57	1.63
0 4.1.9.9.1	Pepper ¹²	1 kg	0.64	0.39	0.43	0.50	0.67	0.87
0 4.1.2	Tomatoes ¹³	1 kg	0.43	0.36	0.52	0.62	0.80	0.97
0 4.1.9.4	Cucumber ¹⁴	1 kg	0.24	0.40	0.46	0.53	0.71	1.22
0 4.1.9.9.2	Watermelon ¹⁵	1 kg	..	0.23	0.19
0 5	Potatoes ¹⁶	1 kg	0.23	0.22	0.22	0.23	0.21	0.24
0 6.1.1	Apple ¹⁷	1 kg	0.41	0.54	0.56	0.50	0.50	0.51
0 6.1.2	Pear ¹⁸	1 kg	1.29	0.94	0.66	0.67	0.70	0.71
0 6.1.9.2	Plums ¹⁹	1 kg	0.70	0.69	0.69	0.76	0.76	..
0 6.1.9.4	Chestnuts ²⁰	1 kg	0.96	0.96	0.96
0 6.4	Grape ²¹	1 kg	0.87	0.76	0.79	0.83
11.1	Cattle ²²	1 kg	1.79	1.77	1.76	1.76	1.80	1.83
11.2	Pigs ²³	1 kg	1.65	1.65	1.65	1.65	1.67	1.67
11.4	Sheep ²⁴	1 kg	1.63	1.64	1.69	1.70	1.62	1.67
11.5	Hens ²⁵	1 pieces	4.22	4.22	4.22	4.22	4.22	4.22
12.1	Milk ²⁶	1 kg	0.27	0.27	0.27	0.27	0.27	0.27
12.9	Honey ²⁷	1 kg	7.00	7.00	7.00	7.00	7.00	7.00
12.2	Eggs ²⁸	30 pieces	2.27	2.32	2.32	2.27	2.27	2.32

2 1 Wheat – is domestic, 2 Barley for production of beer, 3 Maize – Hybrid 448

4 Sunflower

5 Hay produced in meadow, 6 Wheat straw (Stubble wheat), 7 Lucerne

8 Cabbage- variety, (Hybrid 4)

9 Spinach- Matador

10 Onions-are second quality

11 Beans-are second quality

12 Pepper- Variety Sombork

13 Tomatoes- Variety Arleta

14 Cucumber- Variety Cornishon

15 Watermelon– is domestic product

16 Potatoes- Variety Condor Cenebeck

17 Apple –variety Ida red,

18 Pears-variety autochthones,

19 .Plums–variety Stenley

20 Chestnuts – domestic product

21 Grapes-variety Hamburg

22 Live weight per 1kg, for heifers and bulls aged 18-22 months, domestic pedigree

23 Live weight per 1kg, for pigs aged 10-12 months domestic pedigree

24 Live weight per 1kg, for sheep domestic pedigree (white, mug), aged, older than 12 months

25 Hens– domestic (18 weeks old)

26 Milk –Price for 1litre cow milk with 3.2% fat

27 Honey domestic product

28 Price for 30 pieces of eggs, medium class of quality

Figure 2 : Absolute average prices for wheat, maize and hay in 2005, Euro/kg.

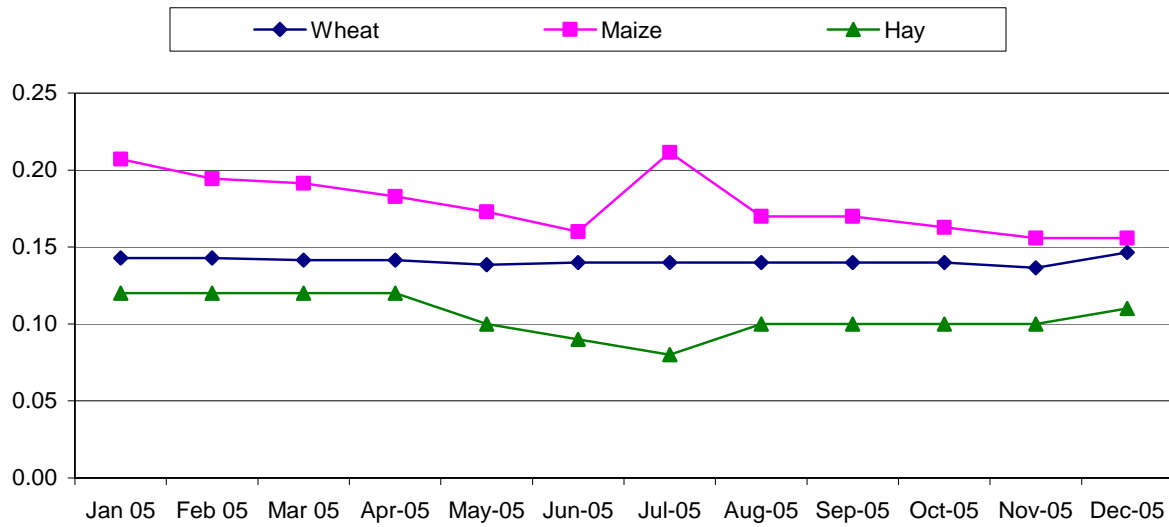


Figure 3 : Absolute average prices for potatoes, tomatoe, pepper and cabbage in 2005, Euro/kg

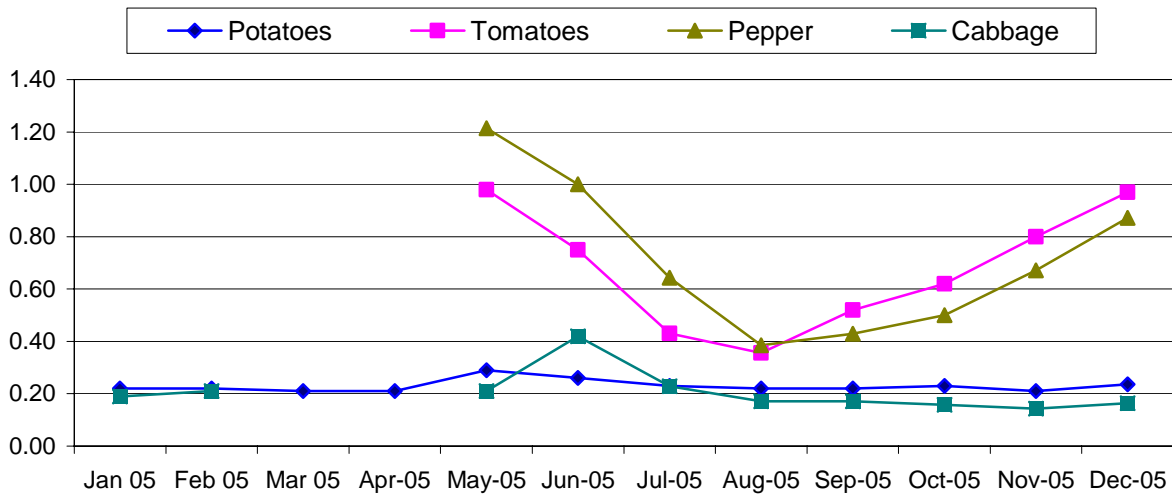
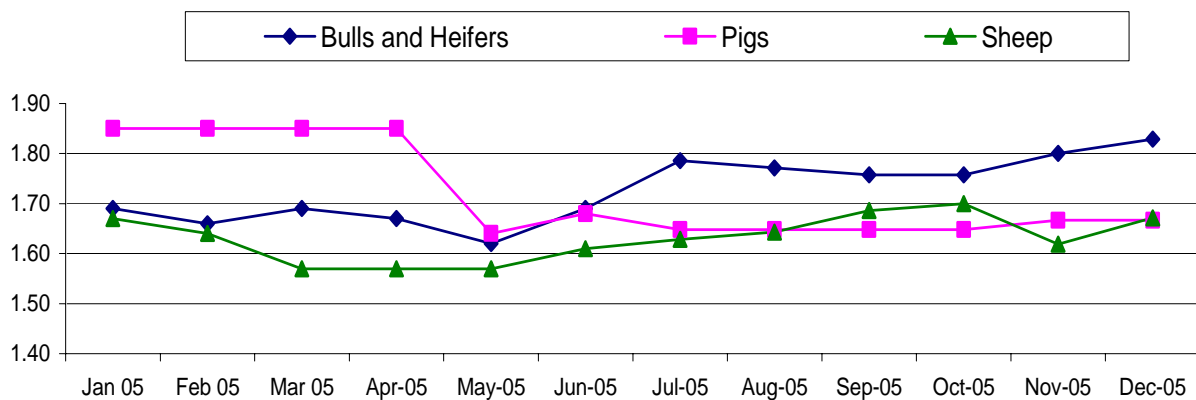


Figure 4 Absolute average prices for heifers and bulls, pigs and sheep calculated as live weight, in 2005, Euro/kg



Price changes for some major agriculture products 2005/2004

Table 8 : Price changes for some major agriculture products, January - Jun (2005/2004), percent

Code	Products	Quantity	Jan-05 / Jan-04 % change	Feb-05 / Feb-04 % change	Mar-05 / Mar-04 % change	Apr-05 / Apr-04 % change	May-05 / May-04 % change	Jun-05 / Jun-04 % change
0 1.1	Wheat ¹	1 kg	-29.6	-37.2	-39.0	-41.2	-37.7	-36.5
0 1.3.2	Barly ²	1 kg	0.0	0.0	0.0	0.0	0.0	0.0
0 1.5	Maize ³	1 kg	-12.7	-15.5	-17.3	-31.2	-32.0	-38.5
0 2.1.2	Sunflower ⁴	1 kg	0.0	0.0	0.0	0.0	0.0	0.0
03.9.1	Hay ⁵	1 kg	-23.0	-34.4	-41.4	-35.2	-39.7	-49.6
03.9.2	Straw ⁶	1 kg	-53.9	-46.6	-52.1	-56.0	-56.7	-59.1
0 4.1.9.1	Cabbage ⁷	1 kg	-7.1	-9.4	61.2
0 4.1.9.3	Spinach ⁸	1 kg	-18.7	30.0	-17.1	0.0
0 4.1.9.6	Onion ⁹	1 kg	-49.0	-51.7	-51.7	-51.7	-51.7	-24.4
0 4.1.9.7	Beans ¹⁰	1 kg	-10.7	-11.5	-8.1	-10.9	-6.5	-3.9
0 4.1.9.9.9.1	Pepper ¹¹	1 Kg	-6.6	15.9
0 4.1.2	Tomatoes ¹²	1 kg
0 4.1.9.4	Cucumber ¹³	1 kg
0 4.1.9.9.9.2	Watermelon ¹⁴	1 kg
0 5	Potatoes ¹⁵	1 kg	-48.3	-44.9	-43.4	-42.7	-29.8	-35.8
0 6.1.1	Apple ¹⁶	1 kg	-15.4	-14.7
0 6.1.2	Pear ¹⁷	1 kg	6.7
0 6.1.9.2	Plums ¹⁸	1 kg
0 6.1.9.4	Chestnuts ¹⁹	1 kg	25.5
0 6.4	Grape ²⁰	1 kg
11.1	Cattle ²¹	1 kg	19.8	26.1	22.9	25.8	19.5	15.7
11.2	Pigs ²²	1 kg	0.0	5.7	5.7	5.7	-11.1	-9.3
11.4	Sheep ²³	1 kg	7.8	0.0	-3.5	1.9	-3.5	-0.9
11.5	Hens ²⁴	1 pieces
12.1	Milk ²⁵	1 kg	1.6	0.5	-1.0	-0.5	-2.5	2.1
12.9	Honey ²⁶	1 kg	0.0	0.0	0.0	2.1	2.1	2.1
12.2	Eggs ²⁷	30 pieces	10.9	0.7	4.7	6.1	12.9	9.7

3 1 Wheat – is domestic, 2 Barley for production of beer, 3 Maize – Hybrid 448

4 Sunflower

5 Hay produced in meadow, 6 Wheat straw (Stubble wheat),

7 Cabbage- variety, (Hybrid 4)

8 Spinach- Matador

9 Onions-are second quality

10 Beans-are second quality

11 Pepper- Variety Sombork

12 Tomatoes- Variety Arleta

13 Cucumber- Variety Cornishon

14 Watermelon– is domestic product

15 Potatoes- Variety Condor Cenebeck

16 Apple –variety Ida red,

17 Pears-variety autochthones,

18 .Plums–variety Stenley

19 Chestnuts – domestic product

20 Grapes-variety Hamburg

21 Live weight per 1kg, for heifers and bulls aged 18-22 months, domestic pedigree

22 Live weight per 1kg, for pigs aged 10-12 months domestic pedigree

23Live weight per 1kg, for sheep domestic pedigree (white, mug), aged, older than 12 months

24 Hens– domestic (18 weeks old)

25 Milk –Price for 1litre cow milk with 3.2% fat

26 Honey domestic product

27 Price for 30 pieces of eggs, medium class of quality

Table 9: Price changes for some major agriculture products, July - December (2005/2004), percent

Code	Products	Quantity	Jul-05 / Jul-04 % change	Aug-05 / Aug-04 % change	Sep-05 / Sep-04 % change	Oct-05 / Oct-04 % change	Nov-05 / Nov-04 % change	Dec-05 / Dec-04 % change
0 1.1	Wheat ¹	1 kg	-35.3	-31.0	-15.5	-14.8	-14.8	-14.0
0 1.3.2	Barly ²	1 kg	0.0	0.0	0.0	0.0	0.0	0.0
0 1.5	Maize ³	1 kg	-16.4	-35.0	-16.8	-17.4	-28.8	-28.8
0 2.1.2	Sunflower ⁴	1 kg	0.0	0.0	0.0	0.0	0.0	0.0
03.9.1	Hay ⁵	1 kg	-48.7	-40.9	-40.9	-21.8	-13.1	-10.7
03.9.2	Straw ⁶	1 kg	-58.0	-56.6	-50.0	-41.3	-50.0	-48.6
0 4.1.9.1	Cabbage ⁷	1 kg	-20.0	-31.4	-20.0	-8.3	-13.0	43.8
0 4.1.9.3	Spinach ⁸	1 kg	-11.1	-2.4	-34.9	19.1	13.3	8.5
0 4.1.9.6	Onion ⁹	1 kg	-19.3	3.7	10.0	-4.5	-7.0	-5.3
0 4.1.9.7	Beans ¹⁰	1 kg	1.9	16.2	-0.9	7.5	-0.9	7.5
0 4.1.9.9.1	Pepper ¹¹	1 Kg	14.2	-9.7	-2.3	11.1	-30.9	-29.9
0 4.1.2	Tomatoes ¹²	1 kg	..	-27.3	10.7	27.6	-5.9	-17.1
0 4.1.9.4	Cucumber ¹³	1 kg	..	-21.1	-4.5	7.2	-10.2	3.9
0 4.1.9.9.2	Watermelon ¹⁴	1 kg	..	14.3	21.5
0 5	Potatoes ¹⁵	1 kg	-43.0	-38.0	-21.5	-23.8	-16.7	0.0
0 6.1.1	Apple ¹⁶	1 kg	-14.7	11.8	-7.1	-2.8	-5.4	0.0
0 6.1.2	Pear ¹⁷	1 kg	1.1	-25.8	-30.3	-33.8	-45.6	-40.5
0 6.1.9.2	Plums ¹⁸	1 kg	..	37.1	33.3	51.4	51.4	..
0 6.1.9.4	Chestnuts ¹⁹	1 kg	50.4	81.9	20.1
0 6.4	Grape ²⁰	1 kg	-15.3	6.0	-15.4	-4.9
11.1	Cattle ²¹	1 kg	19.0	8.8	11.3	9.8	15.1	14.3
11.2	Pigs ²²	1 kg	-10.9	-10.9	-10.9	-10.9	-9.9	-9.9
11.4	Sheep ²³	1 kg	0.0	0.9	3.5	4.4	-0.6	2.6
11.5	Hens ²⁴	1 pieces	..	23.4	20.5	17.7	15.0	17.7
12.1	Milk ²⁵	1 kg	3.8	4.4	4.4	-6.4	-6.4	-9.2
12.9	Honey ²⁶	1 kg	2.1	2.1	0.0	2.1	0.0	0.0
12.2	Eggs ²⁷	30 pieces	14.6	-3.0	-2.5	-1.3	0.4	3.8

4

4 1 Wheat – is domestic, 2 Barley for production of beer, 3 Maize – Hybrid 448

4 Sunflower

5 Hay produced in meadow, 6 Wheat straw (Stubble wheat),

7 Cabbage- variety, (Hybrid 4)

8 Spinach- Matador

9 Onions-are second quality

10 Beans-are second quality

11 Pepper- Variety Sombork

12 Tomatoes- Variety Arleta

13 Cucumber- Variety Cornishon

14 Watermelon– is domestic product

15 Potatoes- Variety Condor Canebeck

16 Apple –variety Ida red,

17 Pears-variety autochthones,

18 .Plums–variety Stanley

19 Chestnuts – domestic product

20 Grapes-variety Hamburg

21 Live weight per 1kg, for heifers and bulls aged 18-22 months, domestic pedigree

22 Live weight per 1kg, for pigs aged 10-12 months domestic pedigree

23Live weight per 1kg, for sheep domestic pedigree (white, mug), aged older than 12 months

24 Hens– domestic (18 weeks old)

25 Milk –Price for 1litre cow milk with 3.2% fat

26 Honey domestic product

27 Price for 30 pieces of eggs, medium class of quality

Methodology

Price indices in this publication have been calculated according standards for price statistics in European Union. The project for calculating these prices and price indices was conducted in the frame of the project of "Improving agro monetary statistics" in cooperation with Statistic Sweden and with financial support by Sida (Swedish International Development Cooperation Agency).

Prices have been collected since November, 2003 and are collected in seven regions: Peja, Pristina, Prizren, Ferizaj, Gjilan, Gjakova, and Mitrovica regions. Prices are collected around the 15th in every month.

Prices are collected for 44 products and measures prices that farmers receive for the production that are sold outside the sector.

Preliminary weights to calculate aggregated indices are mainly based on agriculture household survey 2002. In the future these weights should be obtained from the Economic Accounts for Agriculture (EAA).

Base month for the index calculations is November 2003 (Nov 2003=100).

Calculation of elementary Price Index

Calculations of elementary indices are in general done by using following formula, with un-weighted arithmetic mean price.

$$R_i^t = \frac{\frac{1}{n} \sum P_{ij}^t}{\frac{1}{n} \sum P_{ij}^o} \cdot 100$$

R_i^t – Elementary index for month t and product i

P – Collected price

i – Product i

j – Price j recorded for product (in general price for region)

t – Observed month

0 – Base month

Calculation of aggregated Price Index

Calculating aggregated index for total Output or subgroups of Output Index is done using following formula.

$$I^t = \sum R_i^t \cdot \frac{w_i^0}{\sum w_i^0}$$

I^t – Aggregated index for period t

w_i^0 – Weighting factor in base period for product i

i – Product i

t – Observed month

0 – Base month

Questionnaire

Target definition

Item number	Item name			Quantity	Unit	
Price Collector				Collection place/ Company		
Date						
Price						

<p>Enumerators notes</p> <ul style="list-style-type: none"> - Detailed description of specific variety selected for re-pricing - Changes in the detailed description, date for changes - Treatment of quality change when description changed (information of over-lap price observation, alt. valuation of quality change)
--

Statistical Office of Kosovo a brief description

The Statistical Office of Kosovo, Is a professional office operating since 1948, which passed through some of the historic phases; it has been structured by the state rule of that time. The Statistical Office of Kosovo restarted its work on August 2, 1999, as an independent and professional office in the frames of the Ministry of Public Services. The SOK is financed by the Kosovo Consolidated Budget and donors for various projects.

The Statistical Office of Kosovo acts pursuant the Regulation 2001/14, which entered into force on July 2, 2001. A medium-term Master Plan is being developed for the statistical system of Kosovo compatible with the European Statistics.

SOK Organization Structure; Composes of: four productive departments (Department of Economic Statistics and National Accounts, Department of Population Statistics, Department of Social Statistics and Department of Agricultural and Environment Statistics), seven Regional Offices (located in Gjakova, Gjilan, Mitrovica, Peja, Prizren, Pristina and Ferizaj), two support departments (Department of Methodology and Information Technology and Department of Administration), as well as the Office of the Census.

Total employees are 134, of them 96 (71.6%) within the SOK offices whilst 38 (28.4%) in regional offices.

There is also a support and cooperation with the international institutions.

Statistics Office of Kosovo covers Kosovo entirely. For implementation of the surveys in the field, the SOK uses appropriate sampling and methodology. During the collection of the reports from the reporting units, the SOK engages professionals, technicians, administrators and civilians from the local offices, and regional field registrations.

Recently, a team of national and international experts are working in the project of registration of the population.

SOK Mission; To fulfill the needs of the users with the reliable statistical data and with regular analyses in order to support government departments and to provide them with proper information for decision-making process; as well as for other users in Kosovo.

- **Address: Statistical Office of Kosovo, Zenel Salihu Str. No. 4, Pristina**
- **Telephones:**
Head-quarters: +381 (0) 38 235 111
Director: +381 (0) 38 235 545 or +381 (0) 38 504 604 ext. 6572
- **Fax: +381 (0) 38 235 033**
- **E-mail: agriculture@ks-qov.net**
- **Web-site: www.ks-qov.net/esk**