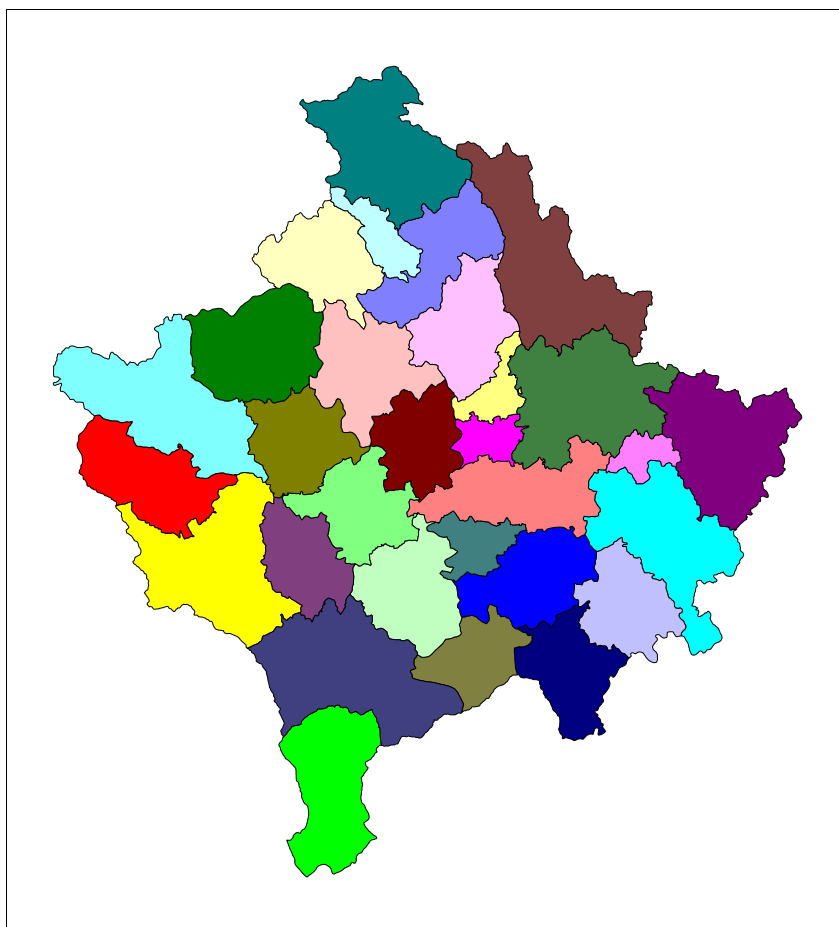




Institucionet e Përkohshme Vetëqeverisëse / Privremena Institucija Samouprave / Provisional Institutions of Self Government
Çeveria e Kosovës / Vlada Kosova / Government of Kosovo
Ministria e Shërbimeve Publike / Ministarstvo javnih službi / Ministry of Public Services

Series 2: Agriculture and Environment Statistics

Output Price Index and Prices in Agriculture 2006 (January- December 2006)



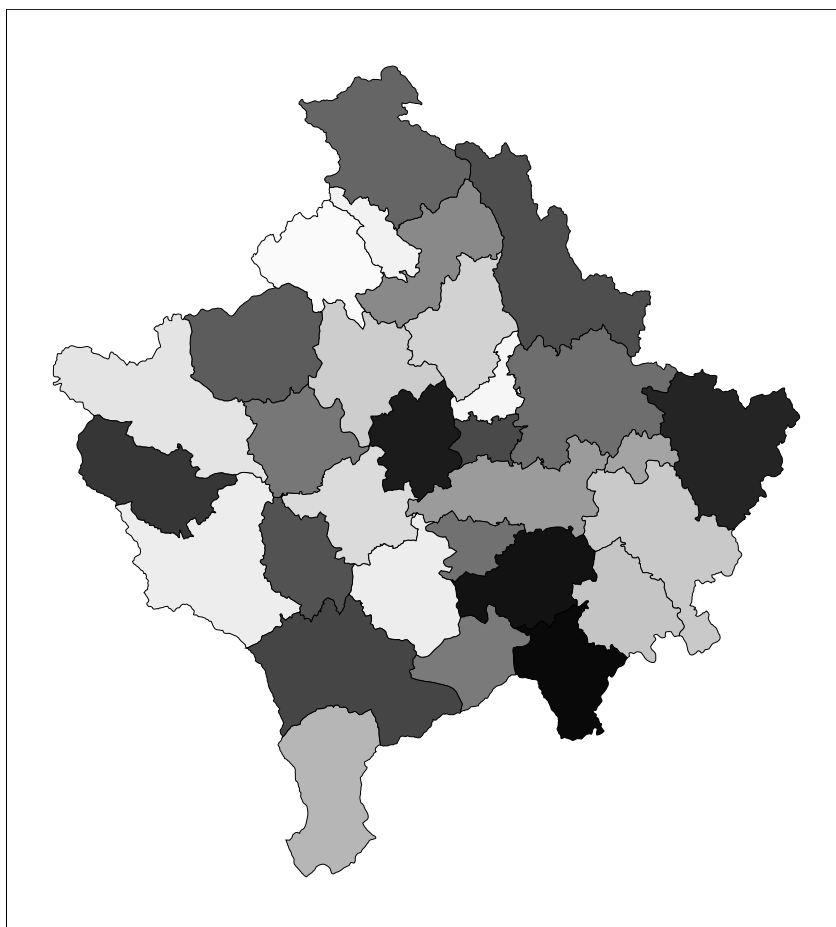
Enti i Statistikës së Kosovës
Zavod za Statistiku Kosova
Statistical Office of Kosovo



Institucionet e Përkohshme Vetëqeverisëse / Privremena Institucija Samouprave / Provisional Institutions of Self Government
Qeveria e Kosovës / Vlada Kosova / Government of Kosovo
Ministria e Shërbimeve Publike / Ministarstvo javnih službi / Ministry of Public Services

Series 2: Agriculture and Environment Statistics

Output Price Index and Prices in Agriculture 2006 (January- December 2006)



Enti i Statistikës së Kosovës
Zavod za Statistiku Kosova
Statistical Office of Kosovo

Publisher: Statistical Office of Kosovo (SOK)

Publication date: November 2007

© Statistical Office of Kosovo

Reproduction is authorized provided the source is acknowledged.

Printed by: K.G.T, Pristine, Kosovo

A great deal of information is available on Internet,
which can be accessed on the SOK Web-site: www.ks-gov.net/esk

P r e f a c e

Agriculture and Environment Statistics Department started to collect data on prices for agriculture products in November 2003. In the beginning it was started to collect prices with limited number of items, now actually prices are collected for 44 items (agriculture products). In the future it is planned to both increase the number of products and also to complement it with an input price index.

This is the fourth publication on Output Price Index and Average Absolute Prices for agriculture products produced by Statistical Office of Kosovo (SOK). In this publication, output price index was calculated for some major agriculture products.

SOK is grateful to the Swedish International Development Cooperation Agency (Sida) for their support of build up the agro monetary statistics system. SOK also is grateful for their corporation of all co-workers at the regional offices, other respondents of data collection as: agriculture farms, industrial and trade enterprises etc.

Especially grateful to Swedish price statistics experts Mr. Anders Grönvall, Mr. Tomas Eriksson and Statistics Sweden Long-term consultant Mrs. Milva Ekonomi and others who directly or indirectly assisted on finalisation of this publication.

This publication was prepared by following personnel from Agriculture and Environment Statistics Department at SOK.

Bajrush Qevani - Director of Department,
Haki Kurti – Chief of Division,
Violeta Arifi – Gashi – Chief of Section,
Habib Strana - Chief of Section,
Rexhep Fejzullahu – Senior Officer

Suggestions, proposals and remarks for this publication are welcome.

November, 2007

Chief Executive in SOK
Avni KASTRATI

List of Abbreviations

SOK	Statistical Office of Kosovo
MPS	Ministry of Public Services
EAA	Economic Accounts for Agriculture
API	Agriculture Price Index
EU	European Union
SIDA	Swedish International Development Cooperation Agency

Symbols

-	Zero
:	Data not available
.	Not applicable
0	Magnitude less than half of unit
‰	Promile

Contents

	Page
Output price index for agriculture products 2006.....	5
Monthly Output Price Index for agriculture products.....	7
Annual Output Price Index.....	9
Changes in Output price Index, percent	10
Absolute average prices in euro for some major agriculture products, January - December 2006.....	12
Changes in Absolute Average prices.....	16
Methodology	18
Questionnaire	19

Output price index for agriculture products 2006

The publication includes data from January to December 2006. To make comparisons and see changes there are also data from year 2004, 2005 and the last two months of year 2003, (November and December 2003).

This publication is based on collection of prices for domestic products in Kosovo. The price collection was carried out at markets, farms and other places where prices on agriculture products are available.

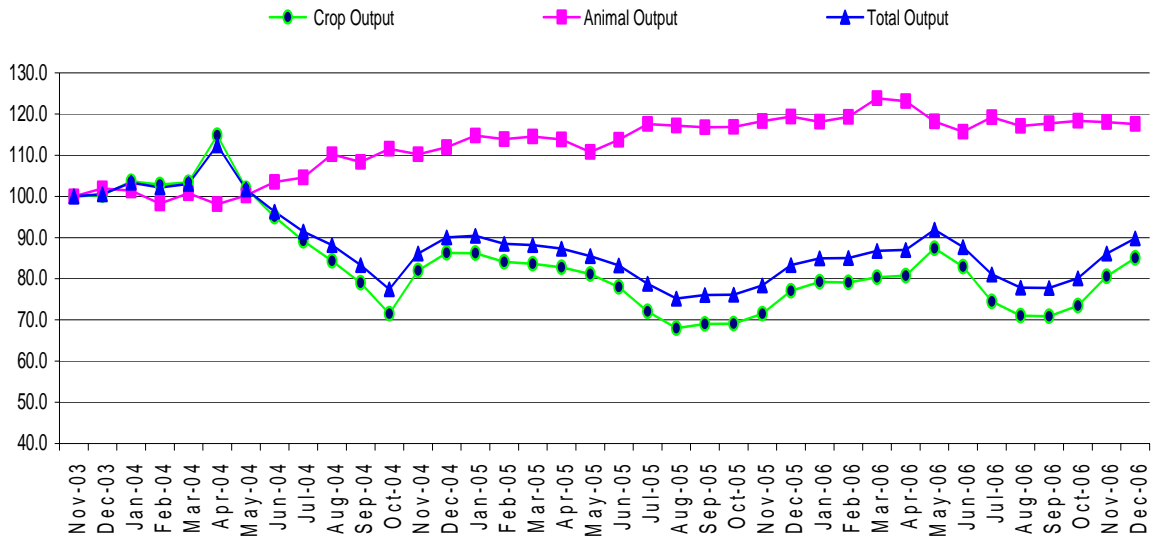
The products which make up the base for the Output Price Index are divided into two main groups: Crop- and Animal Output. Within Crop Output, prices are collected for the following groups; Cereals, Industrial crops, Forage plants, Vegetables, Potatoes and Fruits. Within Animal Output, prices are collected for Animals and Animal Products. For Animals prices are collected for 4 categories; Cattle, Sheep, Pigs and Poultry. These prices are based on the live weight of the animals. Within Animal Products prices are collected for Milk, Eggs and Honey. All prices are calculated in Euro and the measurement unit is in kg, litre and piece.

Figure 1 shows monthly Output Price Index from November 2003 to December 2006 for Total Output as well as for Crop- and Animal Output with November 2003 as base month (November 2003 =100).

The Output Price Index for Animal Output has increased with 17.5 % during the period. The Output Price Index for Crop Output shows much more movements mostly due to seasonal or yield effects. The Index for Crop Output has decreased with 14.9 % during the period. Total Output Index has also decreased with 10.2 % during the period.

In 2006 the annual index for Animal Output has increased with 1.7 % compared with 2005. On the other hand, the index for Crop Output has increased with 2.8 % between 2005 and 2006. Total Output Index has also increased with 2.3 %.

Figure 1. Monthly Output Price Index, November 2003 - December 2006, (Nov. 2003 = 100)



Monthly Output Price Index for agriculture products

Table 1: Monthly Output Price Index, January – Jun 2006 (Nov. 2003 = 100)

Code	Groups	Weight in ‰	Nov-03	2006					
				Jan	Feb	Mar	Apr	May	Jun
0 1	Cereals	96	100	69,9	71,9	71,9	72,9	71,7	73,3
0 1.1	Wheat	54	100	60,1	64,5	64,5	66,4	66,4	66,4
0 1.3	Barley	19	100	100,0	100,0	100,0	100,0	100,0	100,0
0 1.5	Maize	23	100	67,7	65,4	65,4	65,4	60,1	66,9
0 2	Industrial crops	4	100	100,0	100,0	100,0	100,0	100,0	100,0
0 2.1.2	Sunflower	4	100	100,0	100,0	100,0	100,0	100,0	100,0
0 3	Forage plants	194	100	65,8	63,2	62,1	61,8	59,9	64,6
0 3.1	Fodder maize	85	100	67,7	65,4	65,4	65,4	60,1	66,9
0 3.9	Other forage plants	109	100	64,2	61,4	59,5	59,0	59,8	62,7
0 3.9.1	Hay	78	100	67,3	65,5	66,4	65,5	66,4	67,3
0 3.9.2	Straw	31	100	56,6	54,2	51,3	52,8	49,8	54,2
0 4	Vegetables	336	100	83,6	84,0	84,3	84,7	98,8	82,6
0 4.1	Fresh vegetables	336	100	83,6	84,0	84,3	84,7	98,8	82,6
0 4.1.2	Tomatoes	48	100	111,1	111,1	111,1	111,1	113,5	98,5
0 4.1.9	Other fresh vegetables	287	100	78,9	79,4	79,8	80,2	96,4	79,9
0 4.1.9.1	Cabbage	17	100	199,7	205,8	205,8	205,8	205,8	185,0
0 4.1.9.3	Spinach	1	100	108,5	108,5	168,1	74,5	54,6	74,5
0 4.1.9.4	Cucumbers	6	100	137,9	137,9	137,9	137,9	79,3	72,9
0 4.1.9.6	Onions	19	100	67,9	69,2	72,2	78,3	93,3	82,1
0 4.1.9.7	Beans	90	100	93,5	93,5	93,5	95,1	89,4	91,1
0 4.1.9.9.9	Other fresh vegetable;other	154	100	55,4	55,4	55,4	55,3	89,4	61,5
0 5	Potatoes	71	100	70,0	70,0	86,0	88,0	108,0	116,0
0 6	Fruits	152	100	96,4	97,1	97,1	97,1	97,1	97,1
0 6.1	Fresh fruits	78	100	110,4	111,8	111,8	111,8	111,8	111,8
0 6.1.1	Apple	28	100	100,0	104,0	104,0	104,0	104,0	104,0
0 6.1.2	Pears	5	100	74,7	74,7	74,7	74,7	74,7	74,7
0 6.1.9	Other fresh fruit	45	100	120,9	120,9	120,9	120,9	120,9	120,9
0 6.1.9.2	Plums	15	100	153,3	153,3	153,3	153,3	153,3	153,3
0 6.1.9.4	Nuts and dried fruit	30	100	105,0	105,0	105,0	105,0	105,0	105,0
0 6.4	Grapes	74	100	81,7	81,7	81,7	81,7	81,7	81,7
10	Crop Output	853	100	79,2	79,1	80,4	80,7	87,4	82,9
11	Animals	108	100	123,1	124,7	130,8	130,0	123,9	121,0
11.1	Cattle	85	100	126,3	128,4	136,6	135,6	128,4	125,3
11.2	Pigs	9	100	95,3	95,3	95,3	95,3	94,2	93,1
11.4	Sheep	11	100	110,8	109,1	106,9	107,5	105,6	102,0
11.5	Poultry	3	100	154,4	160,1	154,4	154,4	148,7	148,7
12	Animal Products	39	100	104,6	104,6	104,8	104,3	102,7	101,3
12.1	Milk	33	100	104,6	104,6	104,6	104,1	103,0	101,5
12.2	Eggs	1	100	108,2	108,2	104,8	98,5	92,1	85,2
12.9	Other animal products	6	100	104,3	104,3	106,4	106,4	102,1	102,1
13	Animal Output	147	100	118,1	119,3	123,8	123,1	118,2	115,7
14	Total Output	1000	100	84,9	85,0	86,8	87,0	91,9	87,7

Table 2: Monthly Output Price Index, July – December 2006 (Nov. 2003 =100)

Code	Groups	Weight in %	Nov-03	2006					
				Jul	Aug	Sep	Oct	Nov	Dec
0 1	Cereals	96	100	72,6	74,6	74,4	76,2	79,4	80,1
0 1.1	Wheat	54	100	65,1	67,2	68,4	69,0	74,1	74,7
0 1.3	Barley	19	100	100,0	100,0	100,0	100,0	100,0	100,0
0 1.5	Maize	23	100	66,9	70,7	66,9	73,0	74,5	76,1
0 2	Industrial crops	4	100	100,0	100,0	100,0	100,0	100,0	100,0
0 2.1.2	Sunflower	4	100	100,0	100,0	100,0	100,0	100,0	100,0
0 3	Forage plants	194	100	62,4	64,8	63,8	67,1	71,0	74,2
0 3.1	Fodder maize	85	100	66,9	70,7	66,9	73,0	74,5	76,1
0 3.9	Other forage plants	109	100	58,8	60,1	61,3	62,5	68,3	72,7
0 3.9.1	Hay	78	100	63,7	65,5	69,9	69,0	74,0	83,0
0 3.9.2	Straw	31	100	55,7	60,1	60,1	60,1	63,0	63,0
0 4	Vegetables	336	100	63,0	59,2	59,5	64,6	71,0	78,5
0 4.1	Fresh vegetables	336	100	63,0	59,2	59,5	64,6	71,0	78,5
0 4.1.2	Tomatoes	48	100	70,9	49,8	47,9	55,6	82,7	99,6
0 4.1.9	Other fresh vegetables	287	100	61,7	60,8	61,4	66,2	69,0	75,0
0 4.1.9.1	Cabbage	17	100	120,0	120,0	127,0	125,0	84,4	74,8
0 4.1.9.3	Spinach	1	100	90,7	100,4	86,9	93,6	110,1	123,9
0 4.1.9.4	Cucumbers	6	100	45,3	41,3	47,0	55,0	94,0	109,3
0 4.1.9.6	Onions	19	100	74,4	76,9	79,5	82,1	82,1	79,2
0 4.1.9.7	Beans	90	100	91,1	97,6	95,9	96,7	94,0	91,3
0 4.1.9.9.9	Other fresh vegetable;other	154	100	36,8	31,2	32,1	40,0	49,8	63,1
0 5	Potatoes	71	100	96,0	84,8	84,0	98,0	98,0	96,0
0 6	Fruits	152	100	105,7	95,7	95,8	87,2	106,1	111,0
0 6.1	Fresh fruits	78	100	128,6	109,0	109,2	100,2	110,5	108,4
0 6.1.1	Apple	28	100	104,0	104,0	114,7	100,0	90,6	84,4
0 6.1.2	Pears	5	100	74,7	74,7	61,7	76,1	87,4	100,1
0 6.1.9	Other fresh fruit	45	100	150,1	116,0	111,2	103,0	125,5	124,3
0 6.1.9.2	Plums	15	100	242,4	138,6	124,0	129,9	129,9	129,9
0 6.1.9.4	Nuts and dried fruit	30	100	105,0	105,0	105,0	89,9	123,4	121,6
0 6.4	Grapes	74	100	81,7	81,7	81,7	73,5	101,4	113,7
10	Crop Output	853	100	74,5	71,1	70,9	73,5	80,6	85,1
11	Animals	108	100	125,6	122,4	123,3	123,9	123,3	122,6
11.1	Cattle	85	100	130,9	126,8	127,8	128,9	127,8	126,8
11.2	Pigs	9	100	93,1	93,1	93,1	93,1	93,1	93,1
11.4	Sheep	11	100	103,1	104,1	102,9	101,3	103,2	103,2
11.5	Poultry	3	100	148,7	148,7	152,7	152,7	154,4	156,7
12	Animal Products	39	100	101,7	102,5	102,7	103,3	103,5	103,8
12.1	Milk	33	100	102,0	102,5	102,5	103,0	103,0	103,0
12.2	Eggs	1	100	87,0	105,1	114,3	119,2	131,4	143,1
12.9	Other animal products	6	100	102,1	102,1	102,1	102,1	102,1	102,1
13	Animal Output	147	100	119,2	117,1	117,8	118,4	118,0	117,5
14	Total Output	1000	100	81,1	77,8	77,8	80,1	86,1	89,8

Annual Output Price Index

Table 3: Annual Output Price Index, 2004 - 2006 (Nov. 2003=100).

Code	Groups	Weight in ‰	2004	2005	2006	2006/2005 % Change
01	Cereals	96	95,0	73,6	74,1	0,6
01.1	Wheat	54	89,9	62,6	67,2	7,4
01.3	Barley	19	100,0	100,0	100,0	0,0
01.5	Maize	23	102,6	77,3	68,3	-11,7
02	Industrial Crops	4	100,0	100,0	100,0	0,0
02.1.2	Sunflower	4	100,0	100,0	100,0	0,0
03	Forage Plants	194	101,9	68,0	65,1	-4,3
03.1	Fodder maize	85	102,6	77,3	68,3	-11,7
03.9	Other forage plants	109	101,3	60,7	62,5	3,1
03.9.1	Hay	78	100,1	65,2	68,6	5,3
03.9.2	Straw	31	104,5	49,3	56,7	15,1
04	Vegetables	336	83,6	76,0	76,2	0,2
04.1	Fresh vegetables	336	83,6	76,0	76,2	0,2
04.1.2	Tomatoes	48	79,7	96,7	88,6	-8,4
04.1.9	Other fresh vegetables	287	82,7	72,5	74,1	2,1
04.1.9.1	Cabbage	17	150,3	144,2	154,9	7,5
04.1.9.3	Spinach	1	104,1	97,9	99,5	1,7
04.1.9.4	Cucumbers	6	77,9	85,9	91,3	6,3
04.1.9.6	Onions	19	97,3	66,3	78,1	17,7
04.1.9.7	Beans	90	88,3	86,5	93,6	8,1
04.1.9.9.9	Other fresh vegetables: other	154	69,7	56,2	52,1	-7,3
05	Potatoes	71	98,6	64,6	91,2	41,3
06	Fruits	152	97,6	97,3	98,6	1,4
06.1	Fresh fruit	78	98,4	110,0	111,3	1,2
06.1.1	Apple	28	99,1	90,3	101,5	12,4
06.1.2	Pear	5	96,9	86,9	76,9	-11,5
06.1.9	Other fresh fruit	45	98,1	124,9	121,3	-2,9
06.1.9.2	Plums	15	101,8	123,9	151,2	22,0
06.1.9.4	Nuts and dried fruit	30	96,4	125,3	106,7	-14,9
06.4	Grapes	74	96,7	83,9	85,3	1,7
10	Crop Output	853	92,8	76,9	78,8	2,8
11	Animals	108	106,9	121,7	124,6	2,4
11.1	Cattle	85	106,5	124,6	129,1	3,7
11.2	Pigs	9	104,3	98,3	93,9	-4,5
11.4	Sheep	11	110,9	112,0	105,0	-6,3
11.5	Poultry	3	120,5	141,0	152,9	8,4
12	Animal Products	39	99,6	99,1	103,3	4,3
12.1	Milk	33	98,9	98,0	103,2	5,4
12.2	Eggs	1	107,1	111,9	108,1	-3,4
12.9	Other animal products	6	102,7	103,7	103,2	-0,5
13	Animal Output	147	104,9	116,4	118,3	1,7
14	Total Output	1000	94,6	82,7	84,6	2,3

Changes in Output price Index, percent

Table 4: Changes in Output Price Index for same month, January - Jun 2006/2005, percent

Code	Groups	Weight in %	Jan-06/ Jan-05 % change	Feb-06 / Feb-05 % change	Mar-06 / Mar-05 % change	Apr-06 / Apr-05 % change	May-06 / May-05 % change	Jun-06 / Jun-05 % change
0 1	Cereals	96	-13,7	-3,9	-4,4	-1,8	-1,7	2,4
0 1.1	Wheat	54	-14,7	4,7	2,6	5,6	6,6	6,6
0 1.3	Barley	19	0,0	0,0	0,0	0,0	0,0	0,0
0 1.5	Maize	23	-24,8	-22,6	-21,4	-17,7	-20,0	-3,8
0 2	Industrial crops	4	0,0	0,0	0,0	0,0	0,0	0,0
0 2.1.2	Sunflower	4	0,0	0,0	0,0	0,0	0,0	0,0
0 3	Forage plants	194	-17,3	-18,5	-16,7	-15,1	-10,6	6,5
0 3.1	Fodder maize	85	-24,8	-22,6	-21,4	-17,7	-20,0	-3,8
0 3.9	Other forage plants	109	-9,8	-14,7	-12,1	-12,7	-1,4	17,1
03.9.1	Hay	78	-12,6	-11,9	-8,5	-10,8	2,7	18,8
03.9.2	Straw	31	0,0	-18,2	-7,5	-0,5	-1,5	18,4
0 4	Vegetables	336	-8,7	-7,0	-7,2	-5,7	16,0	-0,2
0 4.1	Fresh vegetables	336	-8,7	-7,0	-7,2	-5,7	16,0	-0,2
0 4.1.2	Tomatoes	48	-17,1	-17,1	-17,1	-17,1	0,4	14,2
0 4.1.9	Other fresh vegetables	287	-6,4	-4,3	-4,4	-2,5	19,7	-2,7
0 4.1.9.1	Cabbage	17	53,6	41,9	41,9	41,9	41,9	-37,3
0 4.1.9.3	Spinach	1	8,5	8,5	29,5	-10,3	-24,5	-20,4
0 4.1.9.4	Cucumbers	6	3,9	3,9	3,9	3,9	36,5	82,2
0 4.1.9.6	Onions	19	6,0	10,2	15,0	24,6	48,5	17,6
0 4.1.9.7	Beans	90	5,5	15,0	12,7	19,4	8,9	14,3
0 4.1.9.9.9	Other fresh vegetable;other	154	-28,1	-28,1	-28,1	-28,3	18,7	-1,6
0 5	Potatoes	71	12,9	15,1	43,3	46,7	35,0	58,5
0 6	Fruits	152	-1,0	1,9	1,9	1,9	1,9	1,9
0 6.1	Fresh fruits	78	2,0	7,2	7,2	7,2	7,2	7,2
0 6.1.1	Apple	28	9,1	29,1	29,1	29,1	29,1	29,1
0 6.1.2	Pears	5	-30,8	-30,8	-30,8	-30,8	-30,8	-30,8
0 6.1.9	Other fresh fruit	45	1,9	1,9	1,9	1,9	1,9	1,9
0 6.1.9.2	Plums	15	51,4	51,4	51,4	51,4	51,4	51,4
0 6.1.9.4	Nuts and dried fruit	30	-17,3	-17,3	-17,3	-17,3	-17,3	-17,3
0 6.4	Grapes	74	-4,9	-4,9	-4,9	-4,9	-4,9	-4,9
10	Crop Output	853	-8,1	-5,9	-3,9	-2,4	7,7	6,3
11	Animals	108	2,5	5,0	9,4	9,6	7,8	1,6
11.1	Cattle	85	3,9	6,9	12,3	12,4	9,7	3,0
11.2	Pigs	9	-9,9	-9,9	-9,9	-9,9	0,2	-3,0
11.4	Sheep	11	-3,4	-3,2	-0,9	-0,2	-2,1	-8,0
11.5	Poultry	3	15,2	16,9	10,5	10,5	6,0	4,0
12	Animal Products	39	4,4	3,7	3,9	3,7	3,4	2,1
12.1	Milk	33	5,1	4,0	4,0	4,6	5,2	3,6
12.2	Eggs	1	-5,7	1,2	-4,5	-15,4	-22,7	-23,3
12.9	Other animal products	6	2,1	2,1	4,2	2,0	-2,1	-2,1
13	Animal Output	147	3,0	4,7	8,1	8,2	6,8	1,7
14	Total Output	1000	-6,1	-3,9	-1,6	-0,4	7,6	5,4

Table 5: Changes in Output Price Index for same month, July - December 2006/2005, percent

Code	Groups	Weight in ‰	Jul-06 / Jul-05 % change	Aug-06 / Aug-05 % change	Sep-06 / Sep-05 % change	Oct-06 / Oct-05 % change	Nov-06 / Nov-05 % change	Dec-06 / Dec-05 % change
0 1	Cereals	96	-4,7	3,3	3,0	6,6	12,2	13,2
0 1.1	Wheat	54	6,8	9,0	11,0	12,0	20,2	21,2
0 1.3	Barley	19	0,0	0,0	0,0	0,0	0,0	0,0
0 1.5	Maize	23	-27,2	-4,3	-9,4	3,1	10,1	12,4
0 2	Industrial crops	4	0,0	0,0	0,0	0,0	0,0	0,0
0 2.1.2	Sunflower	4	0,0	0,0	0,0	0,0	0,0	0,0
0 3	Forage plants	194	-8,9	2,0	0,0	7,6	13,9	16,9
0 3.1	Fodder maize	85	-27,2	-4,3	-9,4	3,1	10,1	12,4
0 3.9	Other forage plants	109	17,5	8,6	9,9	12,1	17,3	20,9
03.9.1	Hay	78	22,0	8,8	16,2	14,7	14,6	25,1
03.9.2	Straw	31	24,9	38,5	34,8	34,8	49,4	41,3
0 4	Vegetables	336	1,8	8,0	4,5	5,4	4,5	-0,6
0 4.1	Fresh vegetables	336	1,8	8,0	4,5	5,4	4,5	-0,6
0 4.1.2	Tomatoes	48	42,3	19,3	-19,4	-21,6	-10,1	-10,3
0 4.1.9	Other fresh vegetables	287	-3,6	6,7	8,7	10,9	8,1	1,9
0 4.1.9.1	Cabbage	17	-25,0	0,0	5,8	13,6	-15,6	-35,0
0 4.1.9.3	Spinach	1	6,5	15,1	-0,4	-21,4	1,5	14,2
0 4.1.9.4	Cucumbers	6	67,7	-8,9	-9,4	-8,1	17,6	-20,8
0 4.1.9.6	Onions	19	11,5	7,1	12,7	26,5	20,8	14,4
0 4.1.9.7	Beans	90	5,7	4,3	8,3	3,5	5,1	-1,5
0 4.1.9.9.9	Other fresh vegetable;other	154	-10,4	15,4	11,1	20,6	14,8	14,0
0 5	Potatoes	71	47,7	39,5	33,8	53,1	63,3	45,5
0 6	Fruits	152	6,8	-6,6	-6,2	-8,0	10,3	12,3
0 6.1	Fresh fruits	78	15,3	-7,7	-7,2	-12,0	-3,0	-5,8
0 6.1.1	Apple	28	29,1	-1,5	5,9	2,9	-6,8	-15,6
0 6.1.2	Pears	5	-27,0	-0,4	17,9	42,6	56,9	76,1
0 6.1.9	Other fresh fruit	45	13,8	-11,4	-15,0	-21,4	-4,2	-5,1
0 6.1.9.2	Plums	15	71,0	-0,2	-10,7	-15,3	-15,3	-15,3
0 6.1.9.4	Nuts and dried fruit	30	-17,3	-17,3	-17,3	-25,1	2,8	1,2
0 6.4	Grapes	74	-4,9	-4,9	-4,9	-1,5	30,9	39,2
10	Crop Output	853	3,4	4,5	2,7	6,4	12,7	10,3
11	Animals	108	0,7	-1,3	-0,2	0,2	-1,8	-3,9
11.1	Cattle	85	1,6	-0,8	0,8	1,6	-1,6	-3,9
11.2	Pigs	9	-1,2	-1,2	-1,2	-1,2	-2,3	-2,3
11.4	Sheep	11	-7,7	-7,7	-11,0	-13,2	-7,1	-10,0
11.5	Poultry	3	4,0	4,0	6,7	6,7	7,9	9,5
12	Animal Products	39	4,0	4,3	4,5	5,1	5,3	6,9
12.1	Milk	33	5,8	5,8	5,8	6,3	6,3	8,0
12.2	Eggs	1	-20,8	-6,0	2,2	8,6	19,7	28,0
12.9	Other animal products	6	-2,0	-2,0	-2,0	-2,0	-2,0	-2,0
13	Animal Output	147	1,4	0,0	0,8	1,3	-0,2	-1,6
14	Total Output	1000	2,9	3,5	2,3	5,2	9,8	7,8

Absolute average prices in euro for some major agriculture products, January - December 2006

Table 6: Absolute average prices in euro for some major agriculture products, January - Jun 2006

Code	Products	Quantity	2006					
			Jan	Feb	Mar	Apr	May	Jun
0 1.1	Wheat 1	kg	0,14	0,15	0,15	0,15	0,15	0,15
0 1.3.2	Barley 2	kg	0,19	0,19	0,19	0,19	0,19	0,19
0 1.5	Maize 3	kg	0,16	0,15	0,15	0,15	0,14	0,15
0 2.1.2	Sunflower 4	kg	0,20	0,20	0,20	0,20	0,20	0,20
0 3.9.1	Hay 5	kg	0,11	0,11	0,11	0,11	0,11	0,11
0 3.9.2	Straw 6	kg	0,07	0,06	0,06	0,06	0,06	0,06
0 3.9.9	Lucerne 7	kg	0,12	0,12	0,11	0,11	0,11	0,12
0 4.1.9.1	Cabbage 8	kg	0,29	0,29	:	:	:	0,26
0 4.1.9.6	Onion 9	kg	0,38	0,39	0,40	0,44	0,52	0,46
0 4.1.9.9.9	Pepper 10	kg	:	:	:	:	1,46	0,98
0 4.1.9.3	Spinach 11	kg	:	:	1,13	0,50	0,37	0,50
0 4.1.9.7	Beans 12	kg	1,64	1,64	1,64	1,67	1,57	1,60
0 4.1.2	Tomatoes 13	kg	:	:	:	:	0,99	0,86
0 4.1.9.4	Cucumber 14	kg	:	:	:	:	0,70	0,64
0 4.1.9.9.9	Watermelon 15	kg	:	:	:	:	:	:
0 4.1.9.9.9.3	Leek 16	kg	1,10	1,10	1,08	0,97	:	:
0 4.1.9.9.9.4	Garlic 17	kg	1,79	1,79	1,79	1,67	1,56	1,72
0 5	Potatoes 18	kg	0,25	0,25	:	:	:	0,41
0 6.1.1	Apple 19	kg	0,51	0,53	:	:	:	:
0 6.1.2	Pear 20	kg	0,94	:	:	:	:	:
0 6.1.9.2	Plums 21	kg	:	:	:	:	:	0,76
0 6.1.9.4.1	Chestnuts 22	kg	0,84	:	:	:	:	:
0 6.4.1	Grape 23	kg	:	:	:	:	:	:
11.1.1	Bulls and Heifers 24	kg	1,75	1,78	1,89	1,88	1,78	1,74
11.2	Pigs 25	kg	1,67	1,67	1,67	1,67	1,65	1,63
11.4	Sheep 26	kg	1,61	1,59	1,56	1,57	1,54	1,49
11.5.1	Hens 27	1 pieces	4,55	4,72	4,55	4,55	4,38	4,38
12.1	Milk 28	1 lit.	0,29	0,29	0,29	0,29	0,29	0,29
12.9	Honey 29	kg	7,00	7,00	7,14	7,14	6,86	6,86
12.2	Eggs 30	30 pieces	2,24	2,24	2,17	2,04	1,91	1,77

1

1 - 1 Wheat – is domestic, 2 Barley for production of beer, 3 Maize – Hybrid 448, 4 Sunflower, 5 Hay produced in meadow, 6 Wheat straw (Stubble wheat), 7 Lucerne, 8 Cabbage-, (Hybrid 4), 9 Spinach- variety Matador, 10 Onions-are second quality, 11 Beans-are second quality, 12 Pepper- variety Sombork, 13 Tomatoes- variety Arleta, 14 Cucumber- variety Cornishon, 15 Watermelon– is domestic product, 16 Leek, 17 Garlic, 18 Potatoes- variety Condor, 19 Apple –variety Ida red, 20 Pears-variety autochthones, 21.Plums–variety Stanley, 22 Chestnuts – domestic product, 23 Grapes-variety Hamburg, 24 Live weight per 1kg for heifers and bulls aged 18-22 months domestic pedigree, 25 Live weight per 1kg for pigs aged 10-12 months domestic pedigree, 26 Live weight per 1kg for sheep domestic pedigree (white, mug) aged older than 12 months, 27 Hens– domestic (18 weeks old), 28 Milk –price for 1litre cow milk with 3.2% fat, 29 Honey domestic product, 30 Price for 30 pieces of eggs, medium class of quality,

Table 7: Absolute average prices in euro for some major agriculture products, July - December 2006

Code	Products	Quantity	2006					
			Jul	Aug	Sep	Oct	Nov	Dec
0 1.1	Wheat 1	kg	0,15	0,15	0,16	0,16	0,17	0,17
0 1.3.2	Barley 2	kg	0,19	0,19	0,19	0,19	0,19	0,19
0 1.5	Maize 3	kg	0,15	0,16	0,15	0,17	0,17	0,17
0 2.1.2	Sunflower 4	kg	0,20	0,20	0,20	0,20	0,20	0,20
0 3.9.1	Hay 5	kg	0,10	0,11	0,11	0,11	0,12	0,13
0 3.9.2	Straw 6	kg	0,07	0,07	0,07	0,07	0,07	0,07
0 3.9.9	Lucerne 7	kg	0,11	0,11	0,11	0,11	0,13	0,13
0 4.1.9.1	Cabbage 8	kg	0,17	0,17	0,18	0,18	0,12	0,11
0 4.1.9.6	Onion 9	kg	0,41	0,43	0,44	0,46	0,46	0,44
0 4.1.9.9.9	Pepper 10	kg	0,56	0,44	0,46	0,60	0,77	1,00
0 4.1.9.3	Spinach 11	kg	0,61	0,67	0,58	0,63	0,74	0,83
0 4.1.9.7	Beans 12	kg	1,60	1,71	1,69	1,70	1,65	1,60
0 4.1.2	Tomatoes 13	kg	0,62	0,43	0,42	0,48	0,72	0,87
0 4.1.9.4	Cucumber 14	kg	0,40	0,36	0,41	0,49	0,83	0,96
0 4.1.9.9.9	Watermelon 15	kg	:	0,26	0,22	:	:	:
0 4.1.9.9.9.3	Leek 16	kg	:	1,01	0,85	0,78	0,75	0,94
0 4.1.9.9.9.4	Garlic 17	kg	1,56	1,64	1,72	1,72	1,72	1,64
0 5	Potatoes 18	kg	0,34	0,30	0,30	0,35	0,35	0,34
0 6.1.1	Apple 19	kg	0,53	0,53	0,59	0,51	0,47	0,43
0 6.1.2	Pear 20	kg	0,94	0,94	0,78	0,96	1,10	1,26
0 6.1.9.2	Plums 21	kg	1,20	0,68	0,61	0,64	0,64	:
0 6.1.9.4.1	Chestnuts 22	kg	:	:	:	0,72	0,98	0,97
0 6.4.1	Grape 23	kg	:	:	0,83	0,75	1,03	1,15
11.1.1	Bulls and Heifers 24	kg	1,81	1,76	1,77	1,79	1,77	1,76
11.2	Pigs 25	kg	1,63	1,63	1,63	1,63	1,63	1,63
11.4	Sheep 26	kg	1,50	1,52	1,50	1,48	1,50	1,50
11.5.1	Hens 27	1 pieces	4,38	4,38	4,50	4,50	4,55	4,62
12.1	Milk 28	1 lit.	0,29	0,29	0,29	0,29	0,29	0,29
12.9	Honey 29	kg	6,86	6,86	6,86	6,86	6,86	6,86
12.2	Eggs 30	30 pieces	1,80	2,18	2,37	2,47	2,72	2,96

2

2 - 1 Wheat – is domestic, 2 Barley for production of beer, 3 Maize – Hybrid 448, 4 Sunflower, 5 Hay produced in meadow, 6 Wheat straw (Stubble wheat), 7 Lucerne, 8 Cabbage-, (Hybrid 4), 9 Spinach- variety Matador, 10 Onions-are second quality, 11 Beans-are second quality, 12 Pepper- variety Sombork, 13 Tomatoes- variety Arleta, 14 Cucumber- variety Cornishon, 15 Watermelon– is domestic product, 16 Leek, 17 Garlic, 18 Potatoes- variety Condor, 19 Apple –variety Ida red, 20 Pears-variety autochthones, 21.Plums–variety Stenley, 22 Chestnuts – domestic product, 23 Grapes-variety Hamburg, 24 Live weight per 1kg for heifers and bulls aged 18-22 months domestic pedigree, 25 Live weight per 1kg for pigs aged 10-12 months domestic pedigree, 26 Live weight per 1kg for sheep domestic pedigree (white, mug) aged older than 12 months, 27 Hens– domestic (18 weeks old), 28 Milk –price for 1litre cow milk with 3.2% fat, 29 Honey domestic product, 30 Price for 30 pieces of eggs, medium class of quality,

Figure 2 : Absolute average prices for wheat and maize in 2006, Euro/kg

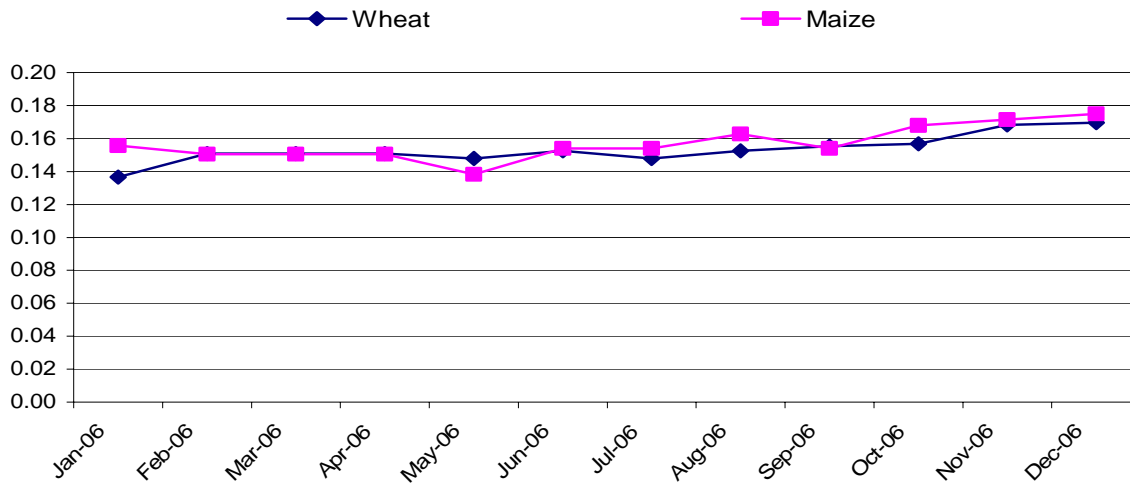


Figure 3 : Absolute average prices for hay, lucerne and straw in 2006, Euro/kg

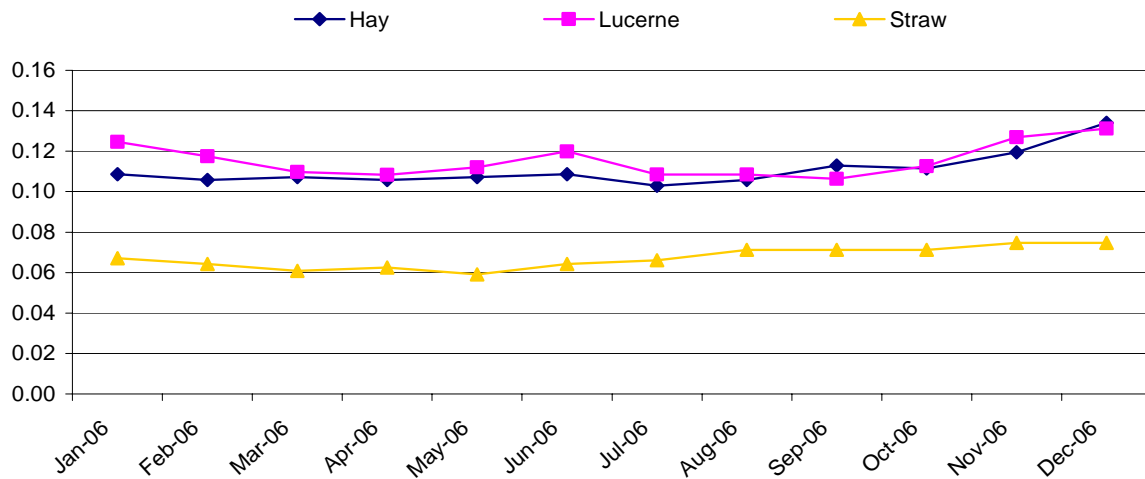


Figure 4 : Absolute average prices for potatoes, tomatoes, pepper and cabbage, in 2006, Euro/kg

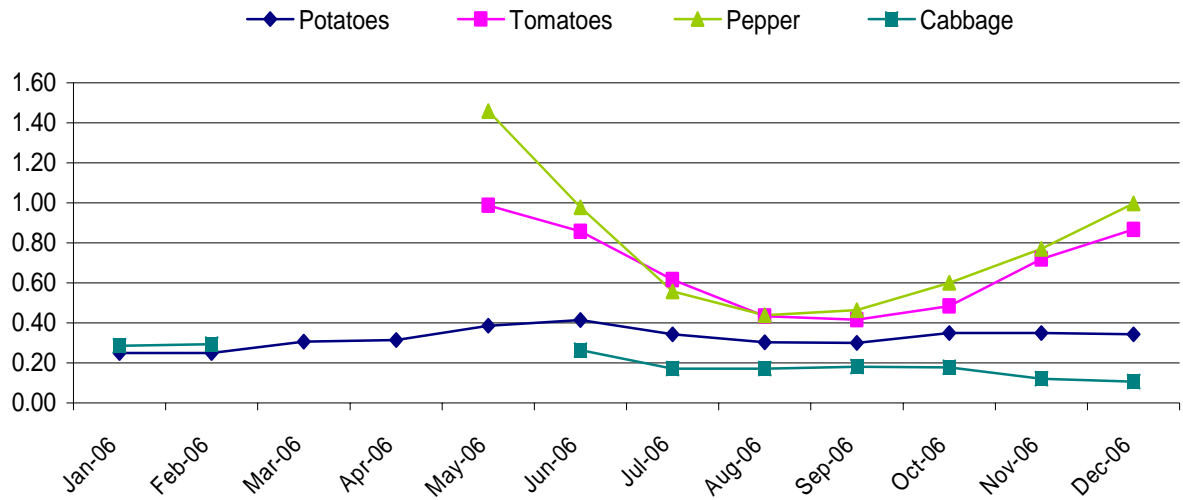
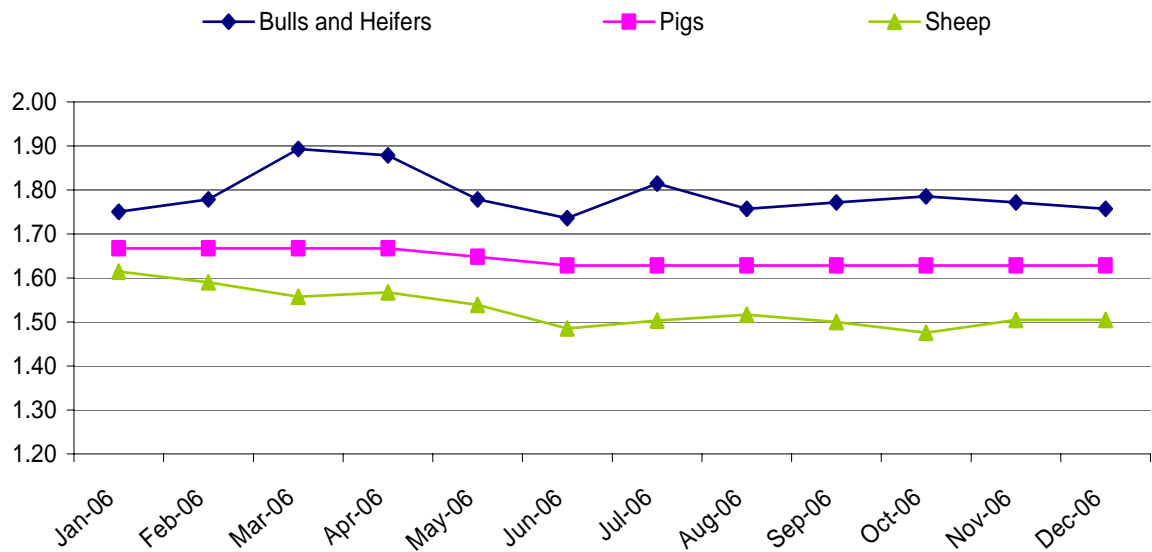


Figure 5: Absolute average prices for bulls and heifers, pigs and sheep calculated as live weight, in 2006, Euro/kg



Changes in Absolute Average prices

Table 8: Price changes for some major agriculture products, January - Jun (2006/2005), percent

Code	Products	Quantity	Jan-06 / Jan-05 % change	Feb-06 / Feb-05 % change	Mar-06 / Mar-05 % change	Apr-06 / Apr-05 % change	May-06 / May-05 % change	Jun-06 / Jun-05 % change
0 1.1	Wheat 1	kg	-14,7	4,7	2,6	5,6	6,6	6,6
0 1.3.2	Barley 2	kg	0,0	0,0	0,0	0,0	0,0	0,0
0 1.5	Maize 3	kg	-24,8	-22,6	-21,4	-17,7	-20,0	-3,8
0 2.1.2	Sunflower 4	kg	0,0	0,0	0,0	0,0	0,0	0,0
0 3.9.1	Hay 5	kg	-12,6	-11,9	-8,5	-10,8	2,7	18,8
0 3.9.2	Straw 6	kg	0,0	-18,2	-7,5	-0,5	-1,5	18,4
0 3.9.9	Lucerne 7	kg	:	:	:	-19,3	-17,5	-14,4
0 4.1.9.1	Cabbage 8	kg	53,6	41,9	:	:	:	-37,3
0 4.1.9.6	Onion 9	kg	6,0	10,2	15,0	24,6	48,5	17,6
0 4.1.9.9.9	Pepper 10	kg	:	:	:	:	20,1	-2,2
0 4.1.9.3	Spinach 11	kg	:	:	29,5	-10,3	-24,5	-20,5
0 4.1.9.7	Beans 12	kg	5,5	15,0	12,7	19,4	8,9	14,3
0 4.1.2	Tomatoes 13	kg	:	:	:	:	-1,7	13,7
0 4.1.9.4	Cucumber 14	kg	:	:	:	:	-28,8	-14,3
0 4.1.9.9.9	Watermelon 15	kg	:	:	:	:	:	:
0 4.1.9.9.9.3	Leek 16	kg	:	:	:	:	:	:
0 4.1.9.9.9.4	Garlic 17	kg	:	:	:	:	:	33,8
0 5	Potatoes 18	kg	12,9	15,1	43,3	46,7	35,0	58,5
0 6.1.1	Apple 19	kg	9,1	29,1	:	:	:	:
0 6.1.2	Pear 20	kg	-30,8	:	:	:	:	:
0 6.1.9.2	Plums 21	kg	:	:	:	:	:	51,4
0 6.1.9.4.1	Chestnuts 22	kg	-17,3	:	:	:	:	:
0 6.4.1	Grape 23	kg	:	:	:	:	:	:
11.1.1	Bulls and Heifers 24	kg	3,8	6,9	12,3	12,4	9,7	3,0
11.2	Pigs 25	kg	-9,9	-9,9	-9,9	-9,9	0,2	-3,0
11.4	Sheep 26	kg	-3,4	-3,2	-0,9	-0,3	-2,1	-8,0
11.5.1	Hens 27	1 pieces	15,2	16,9	10,5	10,5	6,0	4,0
12.1	Milk 28	1 lit.	5,1	4,0	4,0	4,6	5,2	3,6
12.9	Honey 29	kg	2,1	2,1	4,2	2,0	-2,0	-2,0
12.2	Eggs 30	30 pieces	-5,7	1,2	-4,5	-15,4	-22,7	-23,3

3

3 - 1 Wheat – is domestic, 2 Barley for production of beer, 3 Maize – Hybrid 448, 4 Sunflower, 5 Hay produced in meadow, 6 Wheat straw (Stubble wheat), 7 Lucerne, 8 Cabbage-, (Hybrid 4), 9 Spinach- variety Matador, 10 Onions-are second quality, 11 Beans-are second quality, 12 Pepper- variety Sombork, 13 Tomatoes- variety Arleta, 14 Cucumber- variety Cornishon, 15 Watermelon– is domestic product, 16 Leek, 17 Garlic, 18 Potatoes- variety Condor, 19 Apple –variety Ida red, 20 Pears-variety autochthones, 21.Plums–variety Stanley, 22 Chestnuts – domestic product, 23 Grapes-variety Hamburg, 24 Live weight per 1kg for heifers and bulls aged 18-22 months domestic pedigree, 25 Live weight per 1kg for pigs aged 10-12 months domestic pedigree, 26 Live weight per 1kg for sheep domestic pedigree (white, mug) aged older than 12 months, 27 Hens– domestic (18 weeks old), 28 Milk –price for 1litre cow milk with 3.2% fat, 29 Honey domestic product, 30 Price for 30 pieces of eggs, medium class of quality,

Table 9: Price changes for some major agriculture products, July - December (2006/2005), percent.

Code	Products	Quantity	Jul-06 / Jul-05 % change	Aug-06 / Aug-05 % change	Sep-06 / Sep-05 % change	Oct-06 / Oct-05 % change	Nov-06 / Nov-05 % change	Dec-06 / Dec-05 % change
0 1.1	Wheat 1	kg	6,8	9,0	11,0	12,0	20,2	21,2
0 1.3.2	Barley 2	kg	0,0	0,0	0,0	0,0	0,0	0,0
0 1.5	Maize 3	kg	-27,2	-4,3	-9,4	3,1	10,1	12,4
0 2.1.2	Sunflower 4	kg	0,0	0,0	0,0	0,0	0,0	0,0
0 3.9.1	Hay 5	kg	22,0	8,8	16,2	14,7	14,6	25,1
0 3.9.2	Straw 6	kg	24,9	38,5	34,8	34,8	49,4	41,3
0 3.9.9	Lucerne 7	kg	-19,3	-18,4	-20,0	-15,2	-4,5	-4,2
0 4.1.9.1	Cabbage 8	kg	-25,0	0,0	5,8	13,6	-15,6	-35,0
0 4.1.9.6	Onion 9	kg	11,5	7,1	12,7	26,5	20,8	14,4
0 4.1.9.9.9	Pepper 10	kg	-13,4	13,7	8,3	20,0	14,6	14,4
0 4.1.9.3	Spinach 11	kg	6,5	15,1	-0,4	-21,4	1,5	14,2
0 4.1.9.7	Beans 12	kg	5,7	4,3	8,3	3,5	5,1	-1,5
0 4.1.2	Tomatoes 13	kg	47,3	20,4	-14,2	-19,8	-0,1	-13,7
0 4.1.9.4	Cucumber 14	kg	-7,7	0,3	-19,8	-21,2	3,7	-0,2
0 4.1.9.9.9	Watermelon 15	kg	:	11,7	18,8	:	:	:
0 4.1.9.9.9.3	Leek 16	kg	:	:	:	:	:	:
0 4.1.9.9.9.4	Garlic 17	kg	31,2	15,1	7,4	17,3	16,0	22,3
0 5	Potatoes 18	kg	47,7	39,5	33,8	53,1	63,3	45,5
0 6.1.1	Apple 19	kg	29,1	-1,5	5,9	2,9	-6,8	-15,6
0 6.1.2	Pear 20	kg	-27,0	-0,4	17,9	42,6	56,9	76,1
0 6.1.9.2	Plums 21	kg	71,0	-0,2	-10,7	-15,3	-15,3	:
0 6.1.9.4.1	Chestnuts 22	kg	:	:	:	-25,1	2,8	1,2
0 6.4.1	Grape 23	kg	:	:	-4,6	-1,3	30,4	38,6
11.1.1	Bulls and Heifers 24	kg	1,6	-0,8	0,8	1,6	-1,6	-3,9
11.2	Pigs 25	kg	-1,2	-1,2	-1,2	-1,2	-2,3	-2,3
11.4	Sheep 26	kg	-7,7	-7,7	-11,0	-13,2	-7,1	-10,0
11.5.1	Hens 27	1 pieces	4,0	4,0	6,7	6,7	7,9	9,5
12.1	Milk 28	1 lit.	5,8	5,8	5,8	6,3	6,3	8,0
12.9	Honey 29	kg	-2,0	-2,0	-2,0	-2,0	-2,0	-2,0
12.2	Eggs 30	30 pieces	-20,8	-6,0	2,2	8,6	19,7	28,0

4

4 - 1 Wheat – is domestic, 2 Barley for production of beer, 3 Maize – Hybrid 448, 4 Sunflower, 5 Hay produced in meadow, 6 Wheat straw (Stubble wheat), 7 Lucerne, 8 Cabbage-, (Hybrid 4), 9 Spinach- variety Matador, 10 Onions-are second quality, 11 Beans-are second quality, 12 Pepper- variety Sombork, 13 Tomatoes- variety Arleta, 14 Cucumber- variety Cornishon, 15 Watermelon– is domestic product, 16 Leek, 17 Garlic, 18 Potatoes- variety Condor, 19 Apple –variety Ida red, 20 Pears-variety autochthones, 21.Plums–variety Stanley, 22 Chestnuts – domestic product, 23 Grapes-variety Hamburg, 24 Live weight per 1kg for heifers and bulls aged 18-22 months domestic pedigree, 25 Live weight per 1kg for pigs aged 10-12 months domestic pedigree, 26 Live weight per 1kg for sheep domestic pedigree (white, mug) aged older than 12 months, 27 Hens– domestic (18 weeks old), 28 Milk –price for 1litre cow milk with 3.2% fat, 29 Honey domestic product, 30 Price for 30 pieces of eggs, medium class of quality,

Methodology

Price indices in this publication have been calculated according standards for price statistics in European Union. The project for calculating these prices and price indices was conducted in the frame of the project of "Improving agro monetary statistics" in cooperation with Statistic Sweden and with financial support by Sida (Swedish International Development Cooperation Agency).

Prices have been collected since November, 2003 and are collected in seven regions: Peja, Pristina, Prizren, Ferizaj, Gjilan, Gjakova, and Mitrovica regions. Prices are collected around the 15th in every month.

Prices are collected for 44 products and measures prices that farmers receive for the production that are sold outside the sector.

Preliminary weights to calculate aggregated indices are mainly based on agriculture household survey 2002. In the future these weights should be obtained from the Economic Accounts for Agriculture (EAA).

Base month for the index calculations is November 2003 (Nov 2003=100).

Calculation of elementary Price Index

Calculations of elementary indices are in general done by using following formula, with un-weighted arithmetic mean price.

$$R_i^t = \frac{\frac{1}{n} \sum P_{ij}^t}{\frac{1}{n} \sum P_{ij}^o} \cdot 100$$

R_i^t – Elementary index for month t and product i

P – Collected price

i – Product i

j – Price j recorded for product (in general price for region)

t – Observed month

0 – Base month

Calculation of aggregated Price Index

Calculating aggregated index for total Output or subgroups of Output Index is done using following formula.

$$I^t = \sum R_i^t \cdot \frac{w_i^0}{\sum w_i^0}$$

I^t – Aggregated index for period t

w_i^0 – Weighting factor in base period for product i

i – Product i

t – Observed month

0 – Base month

Questionnaire

Target definition

Item number	Item name	Quantity	Unit
Price Collector		Collection place/ Company	
Date			
Price			

<p>Enumerators notes</p> <ul style="list-style-type: none"> - Detailed description of specific variety selected for re-pricing - Changes in the detailed description, date for changes - Treatment of quality change when description changed (information of over-lap price observation, alt. valuation of quality change)
--

Statistical Office of Kosovo a brief description

The Statistical Office of Kosovo, Is a professional office operating since 1948, which passed through some of the historic phases; it has been structured by the state rule of that time. The Statistical Office of Kosovo restarted its work on August 2, 1999, as an independent and professional office in the frames of the Ministry of Public Services. The SOK is financed by the Kosovo Consolidated Budget and donors for various projects.

The Statistical Office of Kosovo acts pursuant the Regulation 2001/14, which entered into force on July 2, 2001. A medium-term Master Plan is being developed for the statistical system of Kosovo compatible with the European Statistics.

SOK Organization Structure; Composes of: four productive departments (Department of Economic Statistics and National Accounts, Department of Population Statistics, Department of Social Statistics and Department of Agricultural and Environment Statistics), seven Regional Offices (located in Gjakova, Gjilan, Mitrovica, Peja, Prizren, Pristina and Ferizaj), two support departments (Department of Methodology and Information Technology and Department of Administration), as well as the Office of the Census.

Total employees are 134, of them 96 (71.6%) within the SOK offices whilst 38 (28.4%) in regional offices.

There is also a support and cooperation with the international institutions.

Statistics Office of Kosovo covers Kosovo entirely. For implementation of the surveys in the field, the SOK uses appropriate sampling and methodology. During the collection of the reports from the reporting units, the SOK engages professionals, technicians, administrators and civilians from the local offices, and regional field registrations.

Recently, a team of national and international experts are working in the project of registration of the population.

SOK Mission; To fulfill the needs of the users with the reliable statistical data and with regular analyses in order to support government departments and to provide them with proper information for decision-making process; as well as for other users in Kosovo.

- **Address: Statistical Office of Kosovo, Zenel Salihu Str. No. 4, Pristina**
- **Telephones:**
Head-quarters: +381 (0) 38 235 111
Director: +381 (0) 38 235 545 or +381 (0) 38 504 604 ext. 6572
- **Fax: +381 (0) 38 235 033**
- **E-mail: agriculture@ks-qov.net**
- **Web-site: www.ks-qov.net/esk**