



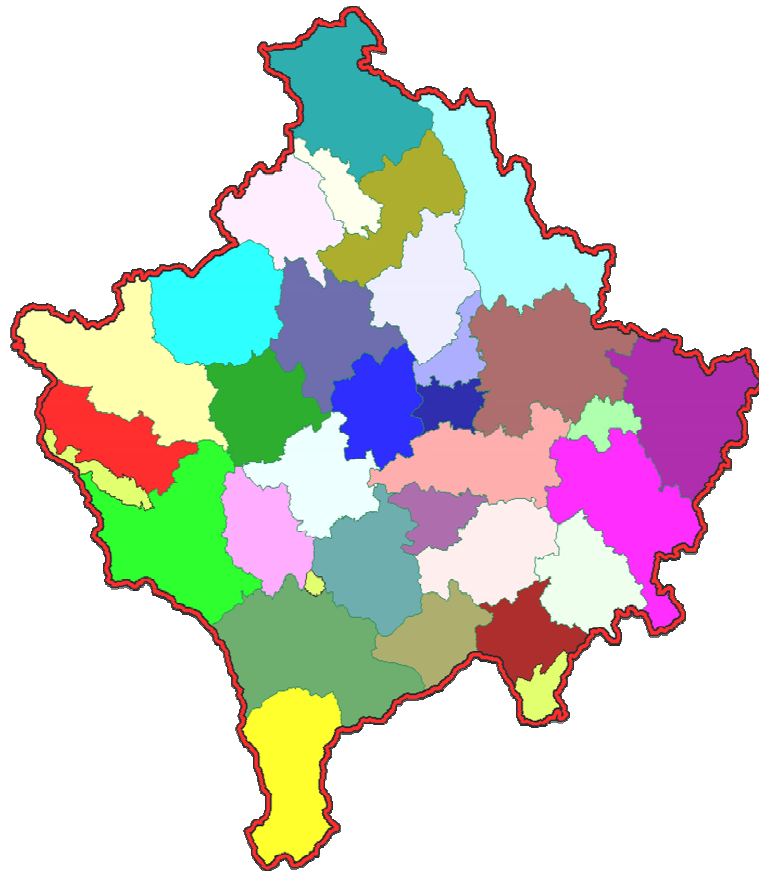
Republika e Kosovës
Republika Kosova-Republic of Kosovo
Qeveria - Vlada - Government

Ministria e Administratës Publike - Ministarstvo Javne Uprave - Ministry of Public Administration

Series 2: Agriculture and Environment Statistics

Output Price Index and Prices in Agriculture (Q2 – 2010)

(2005 = 100)



ENTI I STATISTIKËS SË KOSOVËS
ZAVOD ZA STATISTIKU KOSOVA
STATISTICAL OFFICE OF KOSOVA



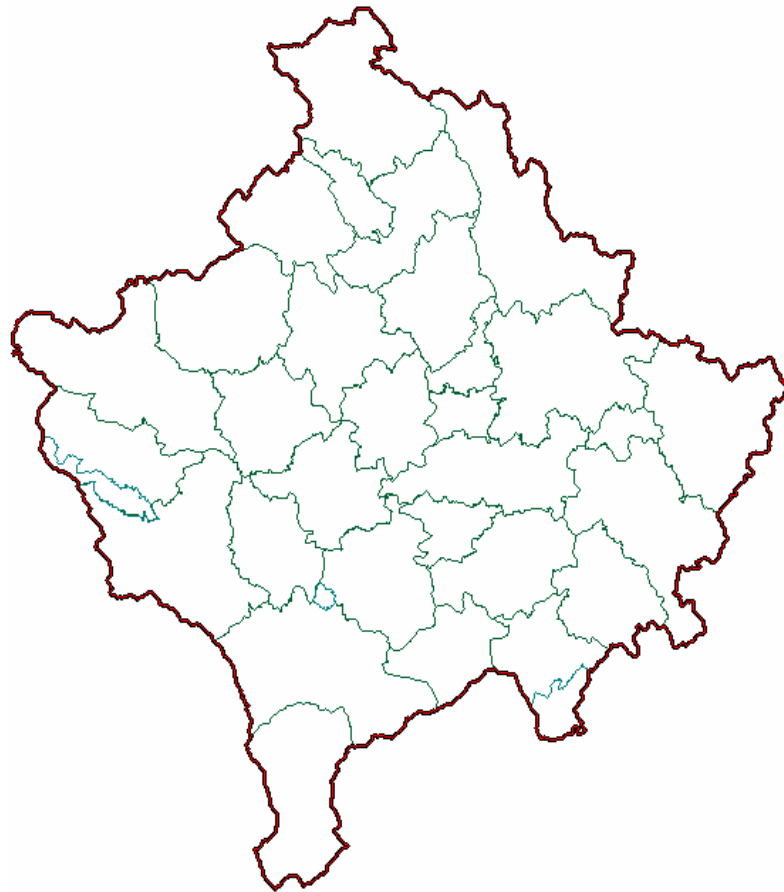
Republika e Kosovës
Republika Kosova-Republic of Kosovo
Qeveria - Vlada - Government

Ministria e Administratës Publike - Ministarstvo Javne Uprave - Ministry of Public Administration

Series 2: Agriculture and Environment Statistics

Output Price Index and Prices in Agriculture (Q2 – 2010)

(2005 = 100)



ENTI I STATISTIKËS SË KOSOVËS
ZAVOD ZA STATISTIKU KOSOVA
STATISTICAL OFFICE OF KOSOVA

Publisher: Statistical Office of Kosovo (SOK)
Publication date: August 2010
© Statistical Office of Kosovo
Reproduction is authorized when source is indicated only
Printed by the K.G.T, Pristina, Kosovo

More information is available on Internet
www.ks-gov.net/esk

P r e f a c e

Statistical Office of Kosovo respectively Agriculture and Environment Statistics Department started to collect data on prices for agriculture products in November 2003. In the beginning, prices were collected for a limited number of items. At the moment prices for 64 different items concerning agricultural output are collected. The plan for the future is to both increase the number of products and also to complement it with an Input Price Index.

This is the thertin publication on Output Price Index and Average Absolute Prices for agriculture products produced by Statistical Office of Kosovo (SOK). In this publication, Output Price Index and prices for some major agriculture products are presented.

SOK is grateful to the Swedish International Development Cooperation Agency (SIDA) for their support of build up the agro monetary statistics system. SOK also is grateful for their corporation of all co-workers at the regional offices, other respondents of data collection as: agriculture farms, industrial and trade enterprises etc.

Especially grateful to Swedish price statistics experts Mr. Tomas Eriksson, Mr. Daniel Persson, Mr. Jimmie Enhall and Statistics Sweden Long-term consultant Mrs. Milva Ekonomi and others who directly or indirectly assisted on finalisation of this publication.

Suggestions, proposals and remarks for this publication are welcome and can be sent to:
E- mail: agriculture@ks-gov.net

This publication was prepared by following personnel:

Bajrush Qevani – Director of department,
Haki Kurti – Chief of division,
Violeta Arifi – Gashi – Chief of section,
Kademsha Bajramaga – Statistical officer

August, 2010

Acting Chief Executive Officer, SOK
Nait Vrenezi

Abbreviations and Acronyms

SOK	Statistical Office of Kosovo
API	Agriculture Price Index
EU	European Union
SIDA	Swedish International Development Cooperation Agency
Q2	Second quarter

Key to symbols

.	Not applicable
‰	Promile

In the tables where figures have (weight) have been rounded to the nearest final digit might be a slight discrepancy in the sum.

Contents

	Page
Agricultural Output Price Index, Q2 (2005 – 2010).....	6
Monthly Agricultural Output Price Index	7
Changes in Agricultural Output Price Index.....	8
Monthly absolute average price in euro for some major agriculture products.....	9
Methodology.....	12
Questionnaire.....	14

Output Price Index for agriculture products

The publication includes data from April to June 2010. To make comparisons and see changes there are also data from second quarters 2005 to 2010 (2005=100).

This publication is based on collection of prices for domestic products in Kosovo. The price collection was carried out at markets, farms and other places where prices on agriculture products are available.

The products which make up the base for the Output Price Index are divided into two main groups: Crop- and Animal Output. Within Crop Output, prices are collected under the following groups; Cereals, Forage plants, Vegetables, Potatoes and Fruits. Within Animal Output, prices are collected for Animals and Animal Product. For Animals prices are collected for four categories; Cattle, Sheep, Pigs and Poultry. These prices are based on the live weight of the animals. Within animal products prices are collected for Milk, Eggs and Honey. All prices are calculated in Euro and the measurement unit is in kg, liter and piece.

Figure 1, 2 and 3 shows Monthly Output Price Index from January - December 2009 and first and second quarter 2010 for Total Output as well as for Crop and Animal Output (2005 = 100).

In the second quarter 2010 the index for Animal Output has decreased by -7.7 % compared to the same period 2009. The index for Crop Output has increased by 6.2 % compared to the same period 2009. Total Output Index has also decreased compared to the same period 2009 by -0.4 %.

Figure 1: Monthly Output Price Index for Crop Output, January – December 2009 and first, second quarter 2010 (2005=100)

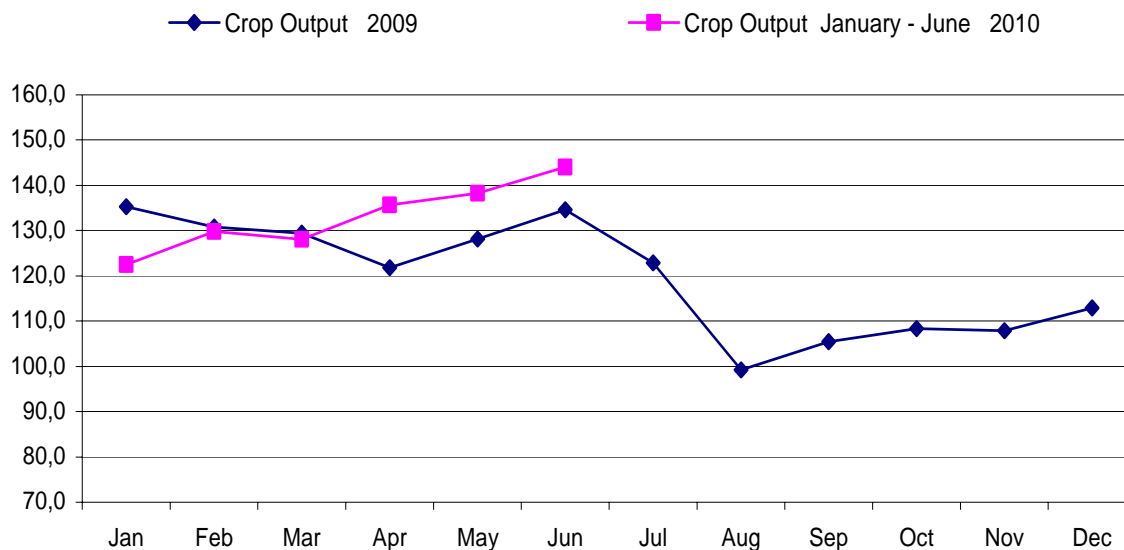


Figure 2: Monthly Output Price Index for Animal Output, January – December 2009 first and second quarter 2010 (2005 = 100)

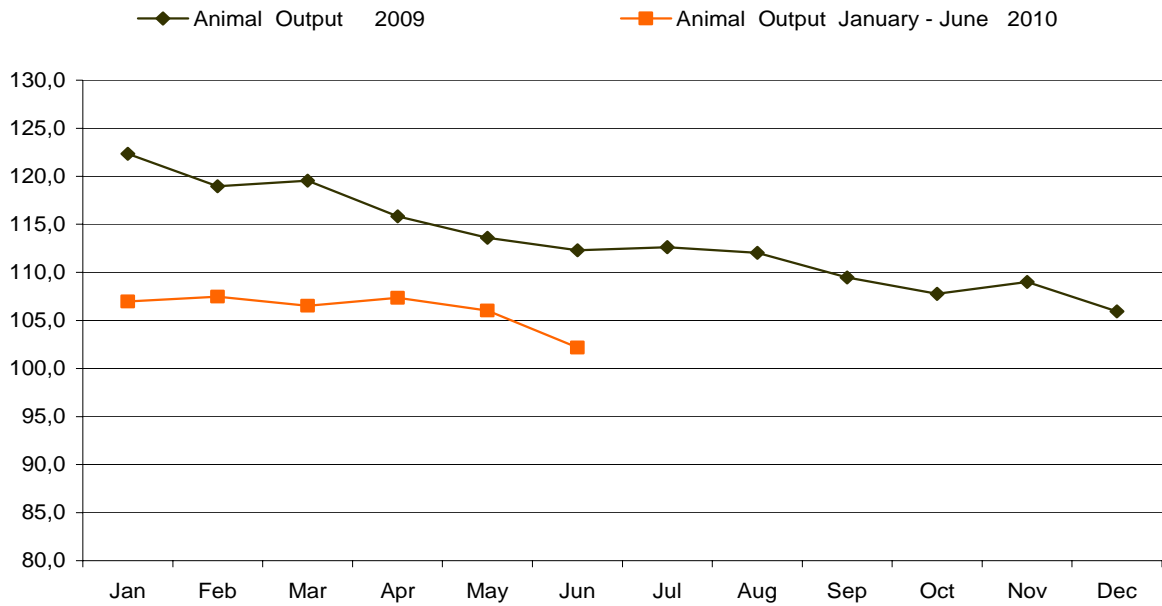
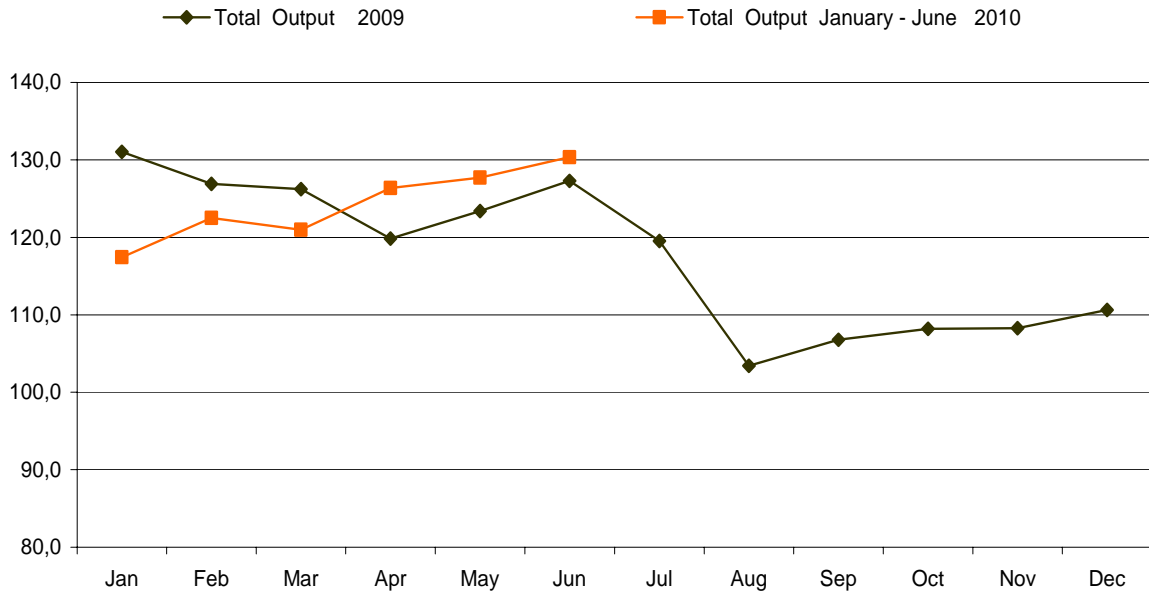


Figure 3: Monthly Output Price Index for Total Output, January – December 2009 first and second quarter 2010 (2005=100)



Agricultural Output Price Index Q2**Table 1: Agricultural Output Price Index, Q2 2005 - 2010 (2005=100)**

API code	Description	Q2-2005	Q2-2006	Q2-2007	Q2-2008	Q2-2009	Q2-2010
010000	CEREALS (including seeds)	99,5	96,6	111,0	207,9	125,9	108,3
011000	Wheat and spelt	100,2	106,4	126,6	232,8	142,0	108,0
011100	Soft wheat and spelt	100,2	106,4	126,6	232,8	142,0	108,0
012000	Rye and meslin	100,2	106,4	126,6	253,0	148,5	139,2
013000	Barley	99,7	106,0	126,1	216,0	163,0	125,7
013200	Malting barley	99,7	106,0	126,1	216,0	163,0	125,7
014000	Oats and summer cereal mixtures	100,2	106,4	126,6	215,0	121,5	108,3
015000	Grain maize	98,8	84,1	91,2	183,9	96,4	100,7
030000	FORAGE PLANTS	103,4	102,9	121,2	205,5	135,2	112,0
031000	Fodder maize	95,2	84,7	92,0	179,0	97,0	101,4
032000	Fodder root crops (including forage beet)
039000	Other forage plants	103,5	103,1	121,5	205,8	135,6	112,1
040000	VEGETABLES AND HORTICULTURAL PRODUCTS	128,5	146,9	128,9	154,9	125,2	145,0
041000	Fresh vegetables	128,5	146,9	128,9	154,9	125,2	145,0
041100	Cauliflower
041200	Tomatoes	160,7	188,8	159,4	175,7	171,2	145,4
041900	Other fresh vegetables	121,4	137,6	122,2	150,3	115,1	144,9
042000	Plants and flowers
050000	POTATOES (including seeds)	126,0	143,4	164,9	152,1	140,8	163,5
051000	Potatoes for consumption	126,0	143,4	164,9	152,1	140,8	163,5
060000	FRUITS	95,9	94,6	118,3	123,7	123,4	113,7
061000	Fresh fruit (excluding citrus fruit and grapes)	95,9	94,6	118,3	123,7	123,4	113,7
061100	Dessert apples
061200	Dessert pears
061300	Peaches	100,0	100,0	100,0	138,1	105,6	95,3
061900	Other fresh fruit, nuts and dried fruit	95,8	94,6	118,4	123,6	123,6	113,8
062000	Citrus fruit
063000	Tropical fruit
064000	Grapes
100000	CROP OUTPUT (010000 TO 090000), including fruits (060000) and vegetables (040000)	119,3	131,1	130,7	168,1	129,0	137,1
101000	CROP OUTPUT (010000 TO 090000), excluding fruits (060000) and vegetables (040000)	110,3	115,5	133,6	186,8	133,9	129,6
110000	ANIMALS	96,7	102,1	99,0	107,1	124,1	113,4
111000	Cattle	96,1	104,1	100,0	105,4	123,6	109,4
111100	Cattle excluding calves	96,1	104,1	100,0	105,4	123,6	109,4
111200	Calves	96,1	104,1	100,0	105,4	123,6	109,4
112000	Pigs	101,3	100,5	98,7	124,1	140,1	136,3
113000	Equines	96,7	102,1	99,0	107,1	124,1	113,4
114000	Sheep and goats	97,2	93,8	93,9	105,3	118,1	117,6
115000	Poultry	100,0	104,9	108,2	146,5	159,7	173,3
115100	Chickens	100,0	104,9	108,2	146,5	159,7	173,3
115900	Other poultry	100,0	104,9	108,2	146,5	159,7	173,3
119000	Other animals
120000	ANIMAL PRODUCTS	101,5	96,1	98,9	116,2	100,3	94,1
121000	Milk	100,5	105,0	101,4	128,5	114,3	99,0
121100	Cows' milk	100,5	105,0	101,4	128,5	114,3	99,0
121900	Other milk types
122000	Eggs	103,3	82,2	95,7	100,3	78,3	84,7
129000	Other animal products	100,5	99,8	95,7	98,5	104,6	106,7
130000	ANIMAL OUTPUT (110000+120000)	98,7	99,6	99,0	110,9	113,9	105,2
140000	AGRICULTURAL GOODS OUTPUT (100000+130000), including fruits (060000) and vegetables (040000)	108,9	115,1	114,6	139,1	121,4	120,9
141000	AGRICULTURAL GOODS OUTPUT (101000+130000), excluding fruits (060000) and vegetables (040000)	102,2	104,4	109,4	133,9	120,0	112,6

Monthly Agricultural Output Price Index

Table 2: Monthly Agricultural Output Price Index, April – June 2010 (2005 =100)

Item Code	Groups	Weight		2010		
		%	1000 euro	Apr	May	Jun
0 1	Cereals	88	8 018	107,9	105,8	108,9
0 1.1	Wheat	45	4 105	109,8	106,8	106,8
0 1.3	Barley	10	904	127,6	122,5	126,8
0 1.5	Maize	31	2 818	98,7	98,7	106,0
0 1.9	Other cereals	2	191	109,5	109,6	109,6
0 3	Forage plants	63	5 726	112,0	109,0	114,9
0 3.1	Fodder maize	0	36	97,2	97,2	104,6
0 3.9	Other forage plants	62	5 690	112,0	109,2	115,1
0 3.9.1	Hay	29	2 682	109,7	105,5	104,1
0 3.9.2	Straw	14	1 234	122,4	115,9	125,6
0 3.9.9	Other forage plants ;others	19	1 774	101,2	92,7	100,2
0 4	Vegetables	351	31 942	156,2	146,4	142,5
0 4.1	Fresh vegetables	351	31 942	156,2	146,4	142,5
0 4.1.2	Tomatoes	30	2 716	.	175,5	115,3
0 4.1.9	Other fresh vegetables	321	29 226	156,2	135,8	147,5
0 4.1.9	Pepper	211	19 234	.	116,1	158,2
0 4.1.9.1	Cabbage	24	2 209	.	.	120,0
0 4.1.9.4	Cucumbers	11	1 009	.	179,8	102,0
0 4.1.9.6	Onions	19	1 729	208,7	181,6	158,5
0 4.1.9.7	Beans	31	2 825	113,8	113,8	111,0
0 4.1.9	Water melon	10	936	.	.	.
0 4.1.9.9.9	Other fresh vegetable;other	14	1 283	135,8	127,6	129,6
0 5	Potatoes	121	10 989	119,8	156,6	202,7
0 6	Fruits	50	4 567	108,7	131,0	112,1
0 6.1	Fresh fruits	23	2 108	108,7	131,0	112,1
0 6.1.1	Apple	8	704	.	.	.
0 6.1.2	Pears	3	248	.	.	.
0 6.1.9	Other fresh fruit	13	1 156	108,7	131,0	112,1
0 6.1.9.2	Plums	5	491	.	.	.
0 6.1.9.4	Nuts and dried fruit	3	306	108,7	106,7	108,7
0 6.1.9.9	Other fresh fruits; other	4	359	.	132,9	112,2
0 6.4.1	Desert grapes	15	1 354	.	.	.
0 6.4.9	Wine grapes	12	1 105	.	.	.
10	Crop Output	673	61 241	135,6	138,3	144,0
11	Animals	188	17 086	115,8	114,1	110,4
11.1	Cattle	140	12 739	112,6	110,1	105,5
11.2	Pigs	9	791	135,9	135,9	137,1
11.4	Sheep	34	3 129	117,1	118,7	117,1
11.5	Poultry	4	345	176,7	174,2	169,2
11,9	Other animals (horses)	1	82	115,8	114,1	110,4
12	Animal Products	140	12 722	96,0	95,1	91,1
12.1	Milk	79	7 194	100,5	99,0	97,4
12.2	Eggs	52	4 760	106,7	106,7	106,7
12.9	Other animal products	8	768	87,5	87,5	79,0
13	Animal Output	327	29 808	107,3	106,0	102,2
14	Total Output	1000	91 049	126,4	127,7	130,3

Changes in Output Price Index

Table 3: Changes in Output Price Index for same month, April – June 2009 / 2010
(2005 =100), percent

Item Code	Groups	Weight		Apr- 09 /	May - 09 /	Jun - 09 /
		%	1000 Euro	Apr - 10 % change	May - 10 % change	Jun - 10 % change
0 1	Cereals	88	8 018	-16,7	-17,1	-14,0
0 1.1	Wheat	45	4 105	-22,1	-26,4	-23,7
0 1.3	Barley	10	904	-28,6	-21,2	-18,0
0 1.5	Maize	31	2 818	1,7	5,2	7,4
0 1.9	Other cereals	2	191	-16,2	-6,3	-6,7
0 3	Forage plants	63	5 726	-20,3	-18,9	-12,3
0 3.1	Fodder maize	0	36	0,0	3,5	5,8
0 3.9	Other forage plants	62	5 690	-20,4	-19,1	-12,5
0 3.9.1	Hay	29	2 682	-28,8	-26,9	-22,7
0 3.9.2	Straw	14	1 234	-8,6	-13,4	-6,2
0 3.9.9	Other forage plants;others	19	1 774	-22,1	-25,0	-16,5
0 4	Vegetables	351	31 942	29,1	7,3	19,4
0 4.1	Fresh vegetables	351	31 942	29,1	7,3	19,4
0 4.1.2	Tomatoes	30	2 716	.	-14,1	-16,5
0 4.1.9	Other fresh vegetables	321	29 226	29,1	21,6	27,4
0 4.1.9	Pepper	211	19 234	.	24,1	39,2
0 4.1.9.1	Cabbage	24	2 209	.	.	-6,3
0 4.1.9.4	Cucumbers	11	1 009	.	21,8	3,6
0 4.1.9.6	Onions	19	1 729	103,8	67,9	28,1
0 4.1.9.7	Beans	31	2 825	-18,0	-19,1	-20,0
0 4.1.9	Water melon	10	936	.	.	.
0 4.1.9.9.9	Other fresh vegetable;other	14	1 283	32,0	12,0	14,0
0 5	Potatoes	121	10 989	8,3	59,4	6,5
0 6	Fruits	50	4 567	-7,4	-3,6	-10,6
0 6.1	Fresh fruits	23	2 108	-7,4	-3,6	-10,6
0 6.1.1	Apple	8	704	.	.	.
0 6.1.2	Pears	3	248	.	.	.
0 6.1.9	Other fresh fruit	13	1 156	-7,4	-3,6	-10,6
0 6.1.9.2	Plums	5	491	.	.	.
0 6.1.9.4	Nuts and dried fruit	3	306	-7,4	-9,1	-11,3
0 6.1.9.9	Other fresh fruits; other	4	359	.	-3,2	-10,5
0 6.4.1	Desert grapes	15	1 354	.	.	.
0 6.4.9	Wine grapes	12	1 105	.	.	.
10	Crop Output	673	61 241	11,4	7,9	7,0
11	Animals	188	17 086	-7,1	-8,6	-10,0
11.1	Cattle	140	12 739	-9,3	-11,3	-13,9
11.2	Pigs	9	791	-3,9	-3,9	-0,3
11.4	Sheep	34	3 129	-1,3	-0,8	1,0
11.5	Poultry	4	345	11,8	6,9	7,1
11.9	Other animals (horses)	1	82	-7,1	-8,6	-10,0
12	Animal Products	140	12 722	-7,7	-3,4	-7,4
12.1	Milk	79	7 194	-14,2	-13,6	-12,6
12.2	Eggs	52	4 760	2,0	2,0	2,0
12.9	Other animal products	8	768	3,9	19,5	1,9
13	Animal Output	327	29 808	-7,3	-6,7	-9,0
14	Total Output	1000	91 049	5,5	3,5	2,4

Monthly Absolute Average Price for some agriculture products

**Table 4: Monthly Absolute Average Prices in euro for some major agriculture products,
April - June 2010 (2005=100)**

Item Code	Description	Unit	2010		
			Apr	May	Jun
01.1.	Wheat ¹	kg	0,16	0,15	0,15
01.3.	Barley ²	kg	0,23	0,22	0,23
01.5.	Maize ³	kg	0,17	0,17	0,19
01.2.	Rye ⁴	kg	0,25	0,25	0,25
01.4.	Oats ⁵	kg	0,24	0,24	0,24
03.9.1	Hay ⁶	kg	0,11	0,11	0,11
03.9.2	Straw ⁷	kg	0,07	0,06	0,07
03.9.9.	Lucern ⁸	kg	0,14	0,12	0,13
05.1.	Potatoes ⁹	kg	0,28	0,36	0,47
04.1.9.1	Cabbage ¹⁰	kg	.	.	0,21
04.1.9.6	Onion ¹¹	kg	0,77	0,67	0,59
04.1.9.9.9	Pepper ¹²	kg	.	.	1,10
04.1.9.3	Spinach ¹³	kg	0,63	0,64	0,94
04.1.9.7	Beans ¹⁴	kg	1,76	1,76	1,71
04.1.2	Tomatoe ¹⁵	kg	.	0,95	0,63
04.1.9.4	Cucumber ¹⁶	kg	.	0,73	0,41
04.1.9.9.9.1	Watermelon ¹⁷	kg	.	.	.
04.1.9.9.9.2	Leek ¹⁸	kg	1,13	.	.
04.1.9.9.9.3	Garlic ¹⁹	kg	2,57	2,64	2,79
06.1.1	Apple ²⁰	kg	.	.	.
06.1.2	Pear ²¹	kg	.	.	.
06.1.3	Chestnuts ²²	kg	.	.	.
06.1.9	Walnuts ²³	kg	1,79	1,75	1,79
06.1.4.1	Grape ²⁴	kg	.	.	.
11.1	Cattle ²⁵	kg	1,94	1,90	1,82
11.2	Pigs ²⁶	kg	2,15	2,15	2,17
11.4	Sheep ²⁷	kg	2,21	2,24	2,21
11.5	Chickens (wilages) ²⁸	1 pieces	8,07	8,00	7,71
11.5.1	Chickens (farms) ²⁹	1 pieces	2,07	2,00	2,00
12.1	Milk ³⁰	1 lit	0,28	0,27	0,27
12.9	Honey ³¹	kg	7,43	7,43	7,43
12.2	Eggs ³²	30 pieces	2,03	2,03	1,83

¹ (.) Shows that in these months we do not collect prices for these agriculture products (Cabbage, Pepper, Spinach, Tomatoes, Cucumber, Watermelon, Apple, Pear, Chestnuts, Grape)

1 - 1 Wheat – is domestic, 2 Barley, 3 Maize – Hybrid 448, 4 Rye, 5 Oats, 6 Hay produced in meadow, 7 Wheat straw (Stubble wheat), 8 Lucerne, 9 potatoes, 10 Cabbage (Hybrid 4 11 Onions- second quality, 12 Pepper- variety Sombork, 13 Spinach- variety Matador, 14 Beans- second quality, 15 Tomatoes- variety Arleta, 16 Cucumber- variety Cornishon, 17 Watermelon– is domestic product, 18 Leek, 19 Garlic, 20 Apple, 21 Pear, 22 Chesnuts, 23 Walnuts, 24Grape, 25 Live weight per 1kg for bulls and heifers aged 18-22 months domestic pedigree, 26 Live weight per 1kg for pigs aged 10-12 months domestic pedigree, 27 Live weight per 1kg for sheep domestic pedigree (white, mug) aged older than 12 months, 28 Chicken (Willage)– domestic (18 weeks old), 29 Chicken (farms)– domestic (18 weeks old) , 30 Milk –price for 1litre cow milk with 3.2% fat, 31 Honey domestic product, 32 Price for 30 pieces of eggs, first class of quality,

Figure 4: Absolute average prices for wheat and maize, January – December 2009 and January - June 2010, Euro/kg.

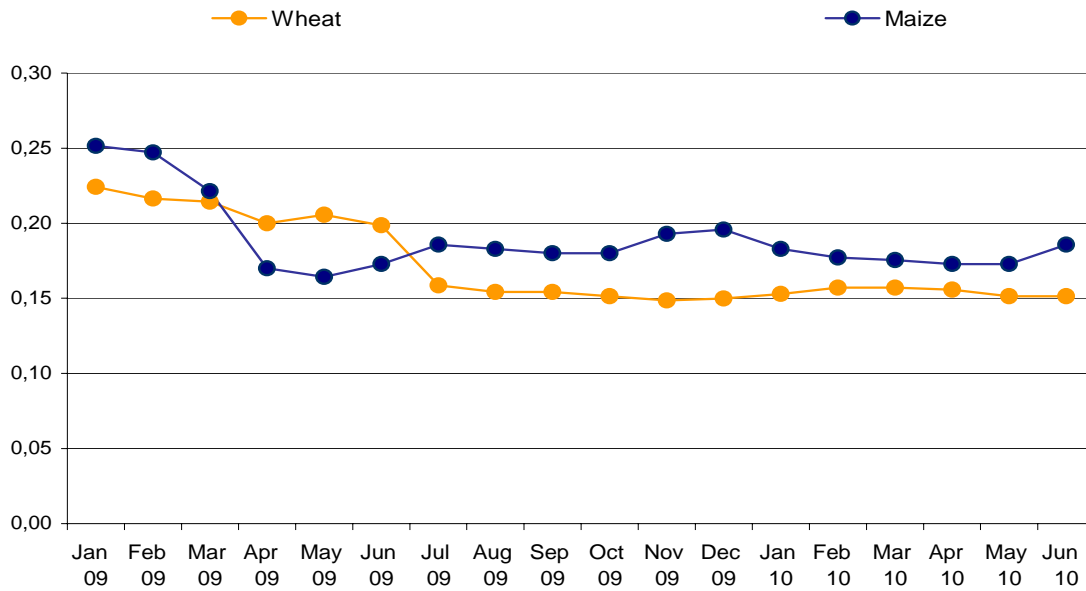


Figure 5: Absolute average prices for hay, straw and lucerne, January – December 2009 and January-June 2010 Euro/ kg.

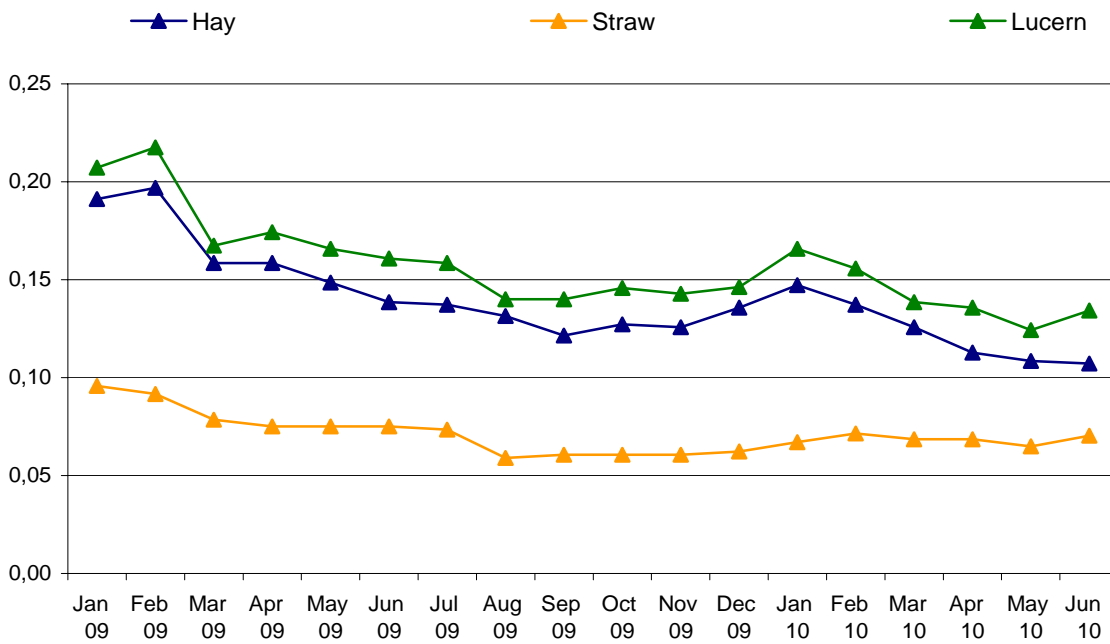


Figure 6: Absolute average prices for potatoes, tomatoes, pepper and cabbage, January – December 2009 and January-June 2010, Euro/ kg.

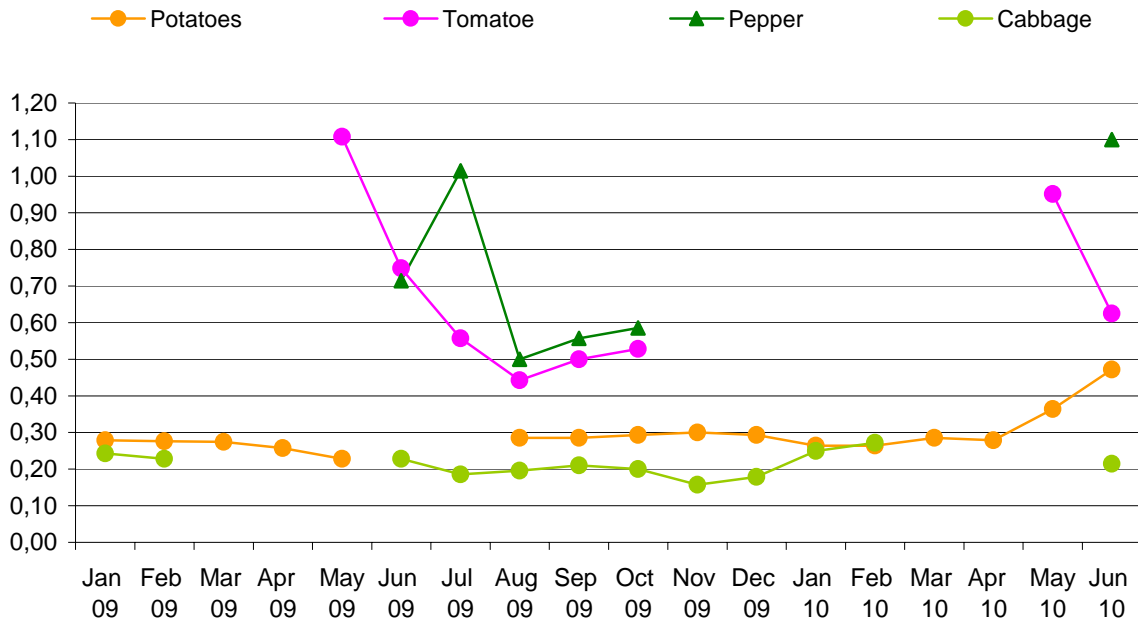
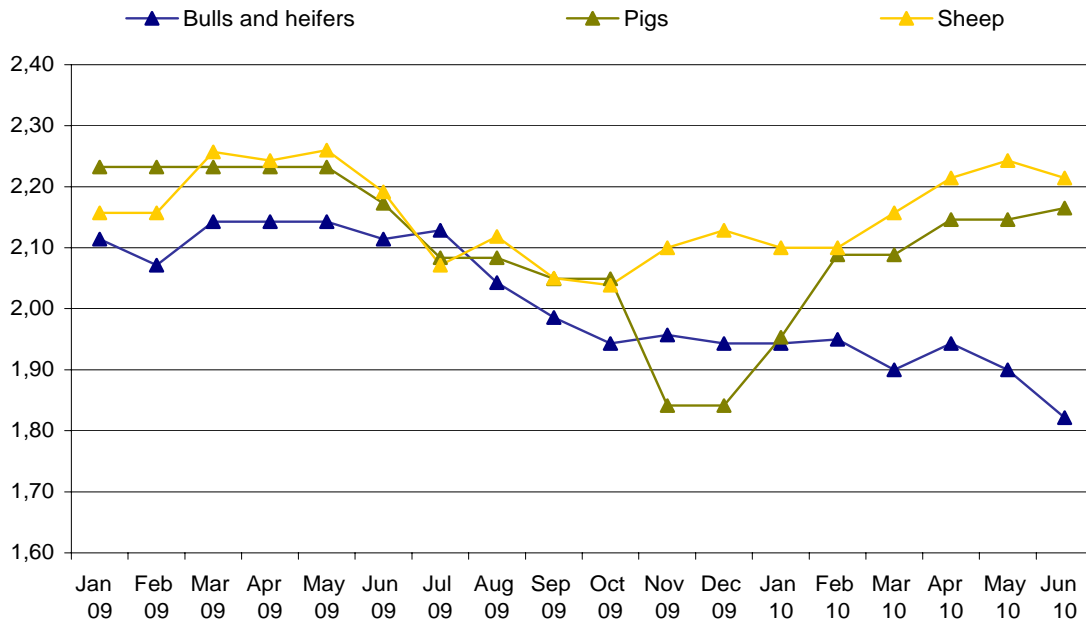


Figure 7: Absolute average prices for heifers and bulls, pigs and sheep calculated as live weight, January – December 2009 and and January - June 2010, Euro/kg



Methodology

Prices and Price indices in this publication have been calculated according standards for price statistics in European Union. The project for calculating these Prices and Price Indices was conducted in the frame of the project of “Improving agro monetary statistics” in cooperation with Statistic Sweden and with financial support by Sida (Swedish International Development Cooperation Agency).

Prices are collected in seven regions: Pristina, Mitrovica, Peja, Gjakova, Prizren, Ferizaj and Gjilan. Prices are collected around the 15th in every month. Since the start the number of different prices that are collected have increased step by step. Therefore some prices are not available for the whole period. Prices are now collected for 64 products and measures prices that farmers receive for the part of their production that are sold. Weights to calculate aggregated indices are mainly based on Agriculture Household Survey 2005, which is the base year in the indices (2005=100). It should be pointed out that the weights, in value or promille, only reflects the part of the agricultural production in Kosovo that are sold outside the agricultural household. For some products the value of the total production can be considerably higher than what is reflected in the weights.

According to EU standards, quarterly and annual indices are supposed to be calculated by each member state. The EU indices in this publication follow the methodology developed in EU. For national needs, also a monthly index is calculated. This index is calculated slightly different from the quarterly index. In short, the monthly index does not use monthly weights on aggregated level (when calculating code 10, 13 and 14). However for most crop groups (code 01, 03, 04 and 06) monthly weights are used within the group to calculate the group aggregates. On the other hand the quarterly indexes have variable quarterly weights everywhere. For this reason, the monthly and the quarterly indices might have slightly different developments if they are compared. However, the EU annual index and the Kosovo annual index are exactly the same. In both cases, the index is calculated as weighted annual index with monthly respectively quarterly weights.

The total weights, quarterly weights and monthly weights are fix during the base period. They all reflect the situation that was present in 2005. By having fix weights, the index is guaranteed only to measure price movements, which is the purpose of the index.

To compare the EU index presented in this publication with other countries, the Eurostat website is recommended (<http://epp.eurostat.ec.europa.eu/portal/page/portal/eurostat/home>).

Calculation of elementary Price Index

Calculations of elementary indices are in general done by using following formula, with un-weighted arithmetic mean price.

$$R_i^t = \frac{\frac{1}{n} \sum P_{ij}^t}{\frac{1}{n} \sum P_{ij}^o} \cdot 100$$

R_i^t – Elementary index for month t and product i

P – Collected price

i – Product i

j – Price j recorded for product (in general price for region 1,2,...,n)

t – Observed month

0 – Base month

Calculation of aggregated Price Index

Calculating aggregated index for total Output or subgroups of Output Index is done using following formula.

$$I^t = \sum (R_i^t \cdot \frac{w_i^0}{\sum w_i^0})$$

- I^t – Aggregated index for period t
- w_i⁰ – Weighting factor in base period for product i
- i – Product i
- t – Observed month
- 0 – Base month

Questionnaire

Target definition

Item number	Item name				Quantity	Unit
Price Collector				Collection place/ Company		
Date						
Price						

<p>Enumerators notes</p> <ul style="list-style-type: none"> - Detailed description of specific variety selected for re-pricing - Changes in the detailed description, date for changes - Treatment of quality change when description changed (information of over-lap Price observation, alt. valuation of quality change)
--

Statistical Office of Kosovo

short description

Statistical Office of Kosovo is a professional institution which deals with collection, processing and publication of official statistical data. As such acts since 1948 and has passed through several historical stages, structured according to state regulation of those times.

On 2 August 1999, the Office has resumed his professional work (after nine years of interruption of all statistical series detrimental to the interest of Kosovo), as an independent institution under the Ministry of Public Administration. Office is funded by the Kosovo Consolidated Budget, but also by donors for specific projects and for technical professional support.

Statistical Office of Kosovo operates under Regulation 2001/14 which entered into force on 2 July 2001. Law on official statistics is in process for approval. Strategic development plan 2009-2013 is the middle term implementation for the development of statistical system in correlation with the European Union statistics (EUROSTAT). **Statistical Office of Kosovo** has this organizational structure: production departments; (Department of Economic statistics and National Accounts, Department of Population statistics, Department of Agriculture and Environmental statistics and Department of Social statistics. **Support Departments;** (Department of Methodology and Information Technology, Department of Administration. **Within the Office we also established** Office of the Population Census, Households and Dwellings. **Regional Offices;** Gjakove, Gjilan, Mitrovica, Peja, Prizren, Prishtina and Ferizaj

Number of employees and budget are still limited. Employees are total of 134 workers, of them 96 (71.6%) at the headquarters of the Office, while in the Regional Offices, 38 (28.4%), with qualifying structure, 65.4% with university education to 34.6% with secondary education.

We have professional and technical cooperation with all ministries of the Government of Kosovo, especially with the Ministry of Economy and Finance, Central Bank of Kosovo, with international institutions, EUROSTAT, International Monetary Fund, World Bank, Sweden's SIDA, DFID, UNFPA, UNDP, UNICEF, and the statistics of countries in the region.

Statistical Office of Kosovo almost completely covers the territory of Kosovo, based on the statistical structure of the enumeration areas as the basic unit and sole in the country from which it gets first hand information. All surveys conducted in the field use the extension of the samples in these enumeration areas but also a statistical methodology according to international recommendations. During the collection of statistical data and reports from reporting entities are involved professionals, technicians, administrators, servants of the country offices, field enumerators from regional offices, etc.

We are in intensive final preparations for the implementation of major project for the state of Kosovo; Population Census, Households and Dwellings who will now take place from 1- 15 April 2011, now delayed Census which has recently been in 1981. In this major project we have engaged academics, scientists and local and international experts in all working groups.

The mission of the Office; to meet the needs of users with qualitative statistical data, objective, in time and space so that users have reliable base to conduct regular analysis in the interest of planning and project development at the municipal and country level. To support government institutions, scientific institutes, research academies, businesses in order to provide proper information for decision-makers and other users in Kosovo.

- **Address: STATISTICAL OFFICE OF KOSOVO,**
Street. "Zenel Salihu", No. 4, 10000 Prishtina
- **Telephone:** +381 (0) 38 235 111,
CEO: +381 (0) 38 235 111 102
- **Fax::** +381 (0) 38 235 033
- **Website:** www.ks-gov.net/esk
- **E-mail:** agricultural@ks-gov.net

