



Republika e Kosovës
Republika Kosova-Republic of Kosovo
Qeveria - Vlada - Government
Zyra e Kryeministrit -Ured Premijera -Office of the Prime Minister
Agjencia e Statistikave të Kosovës - Agencija za Statistike Kosova - Kosovo Agency of Statistics

Series 2: Agriculture and Environment Statistics

Output Price Index and Prices In Agriculture 2010-2014 (2010=100)





Republika e Kosovës
Republika Kosova-Republic of Kosovo
Qeveria - Vlada - Government
Zyra e Kryeministrit -Ured Premijera -Office of the Prime Minister
Agjencia e Statistikave të Kosovës - Agencija za Statistike Kosova - Kosovo Agency of Statistics

Series 2: Agriculture and Environment Statistics

Output Price Index and Prices In Agriculture 2010-2014 (2010=100)



AGJENCIA E STATISTIKAVE TË KOSOVËS
AGENCIJA ZA STATISTIKE KOSOVA
KOSOVO AGENCY OF STATISTICS

Publisher: - Kosovo Agency of Statistics (KAS)
Publication date: February, 2015
© - Kosovo Agency of Statistics
Reproduction is authorized when source is indicated only
Printed by the K.G.T, Pristina, Kosovo

More information is available on Internet
<http://ask.rks-gov.net>

Preface

Kosovo Agency of Statistics respectively Department of Agriculture and Environment Statistics, has begun to collect data on prices for agricultural products since November 2003. In the beginning the number of items was limited. With the change of base year from 2003 to base year 2005, prices were collected for 64 items agricultural products. Currently with the change of basic year from 2005 to 2010, prices are collected for 67 items agricultural products. The purpose of Output price index is to measure the price movements for the products sold by the farmer. Plan for the future is to increase the number of products. As a complement to the Output price index is the Input Price Index.

The change of the base year, for Output price index and agricultural price production is done based on the recommendations of Eurostat, relying on Handbook for EU Agricultural Price Statistics Version 2.0 March 2008 from the base year 2005 = 100 in the base year 2010 = 100, where the change of base year is recommended to be carried out in every five years

This is the thirty-fourth publication on Output Price Index of Agricultural Products and the absolute average prices of agricultural products produced by Kosovo Agency of Statistics. In this publication, the Output Price Index of Agricultural Products is introduced for some major agriculture products.

Kosovo Agency of Statistics is grateful to the Swedish International Development Cooperation Agency (SIDA) for the support in building up the agro monetary statistical system.

KAS is also grateful for the cooperation to all associates from KAS' regional offices, the collaborators (respondents) from the holdings where the prices have been collected such as: agricultural farms, industrial enterprises, commercial etc.

We are especially grateful to Swedish experts for price statistics, Mr. Anders Grönvall, Mr. Jimmie Enhall and others who directly or indirectly assisted on finalization of this publication.

Suggestions, proposals and remarks for this publication are welcome and can be sent to: E- mail: agriculture@ks-gov.net.

This publication was prepared by following personnel:

Bajrush Qevani	-	Director of department,
Violeta Arifi – Gashi	-	Chief of division
Kademsha Bajramaga	-	Officer

February, 2015

Chief Executive KAS
Isa Krasniqi

Abbreviations and Acronyms

KAS	-	Kosovo Agency of Statistics
API	-	Agriculture Price Index
EU	-	European Union
SIDA	-	Swedish International Development Cooperation Agency

Key to symbols

.	-	Not applicable
‰	-	Promile

In the tables where figures have (weight) have been rounded to the nearest final digit might be a slight discrepancy in the sum.

Contents

Preface	1
Abbreviations and Acronyms	2
Output Price Index for agriculture products	5
Annual Agricultural Output Price Index 2010-2014 (Kosovo disposition) (2010=100).....	6
Annual Agricultural Output Price Index 2011-2014 (EU disposition), (2010=100).....	7
Quarterly Agricultural Output Price Index 2010 - 2014(EU disposition), (2010=100)	8
Monthly Agriculture Output Price Index 2010-2014 (2010=100).....	13
Annual prices Kosovo 2010-2014	23
Methodology	26
Questionnaire	28

Output Price Index for agriculture products

The publication includes data from January - December 2010 - 2014. This publication is based on collection of prices for domestic products in Kosovo. The price collection was carried out at markets, farms and other places where prices on agriculture products are available.

The products which make up the base for the Output Price Index are divided into two main groups: Crop- and Animal Output. Within Crop Output, prices are collected under the following groups; Cereals, Forage plants, Vegetables, Potatoes and Fruits. Within Animal Output, prices are collected for Animals and Animal Product. For Animals prices are collected for four categories; Cattle, Sheep, Pigs and Poultry. These prices are based on the live weight of the animals. Within animal products prices are collected for Milk, Eggs and Honey. All prices are calculated in Euro and the measurement unit is in kg, liter and piece.

The annual index changes in 2014 compared with 2013 (change in %)

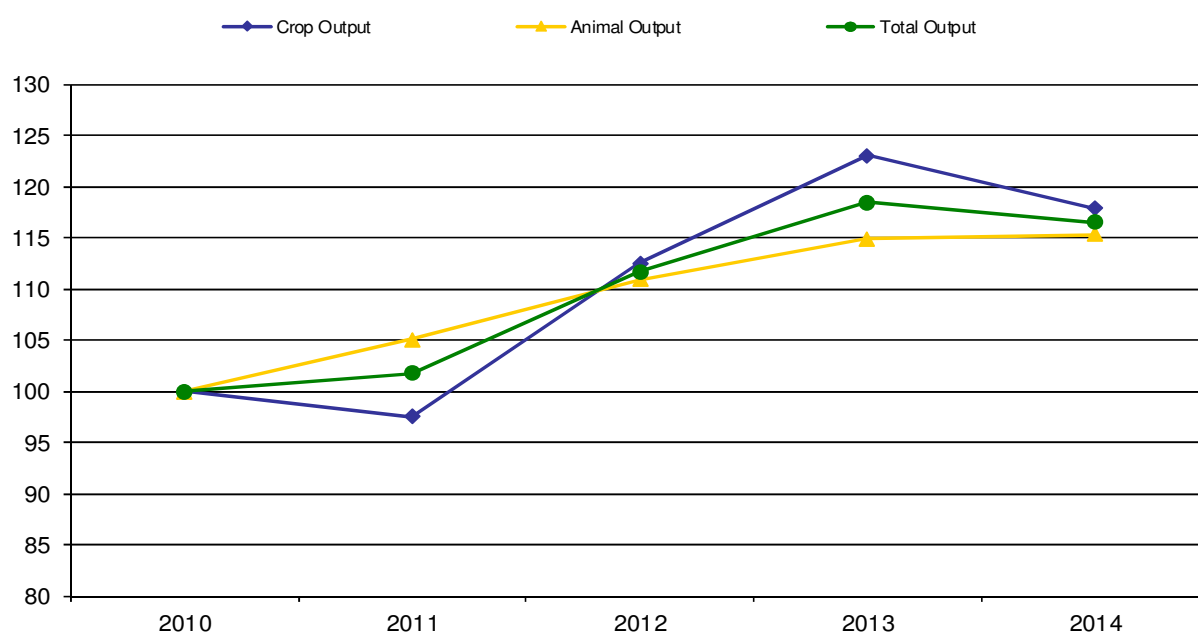
The annual index in 2014 has decreased with – 4.1 % for Animal Output compared to the same period 2013. The index for Crop Output has increased with 0.4 % between 2013 and 2014. Total Output Index has also decreased during the period with – 1.7 %.

The annual index changes in 2014 compared with 2010 (change in %)

The annual index in 2014 has increased with 17.9 % for Animal Output compared with 2010. The index for Crop Output has increased with 15.3 % between 2010 and 2014. Total Output Index has also increased with 16.5 % compared with 2010.

Figure 1. Shows Annual Output Price Index from 2010-2014 for Total Output as well as for Crop- and Animal Output (2010 = 100).

Figure 1: Annual Output Price Index 2010-2014 (2010=100)



Annual Agricultural Output Price Index 2010-2014 (Kosovo disposition) (2010=100)

Table 1: Annual Agricultural Output Price Index 2010-2014 (Kosovo disposition), (2010 = 100)

Item Code	Groups	Weight in %	Weight 1000 Euro	2010	2011	2012	2013	2014
0 1	Cereals	44	14,173	100.0	129.5	135.5	119.5	111.0
0 1.1	Wheat	32	10,360	100.0	129.6	136.9	112.9	104.9
0 1.3	Barley	1	191	100.0	121.8	138.1	152.9	154.3
0 1.5	Maize	10	3,248	100.0	130.2	131.8	135.6	125.9
0 1.9	Other cereals	1	375	100.0	126.0	127.2	144.8	128.3
0 3	Forage plants	18	5,681	100.0	111.4	139.2	140.1	126.3
0 3.1	Fodder maize	0	45	100.0	134.6	124.5	136.7	117.8
0 3.9	Other forage plants	17	5,637	100.0	111.2	139.3	140.1	126.4
03.9.1	Hay	10	3,149	100.0	115.8	149.5	152.9	136.8
03.9.2	Straw	4	1,234	100.0	104.2	122.4	114.0	101.8
03.9.9	Other forage plants ;others	4	1,254	100.0	106.6	130.5	133.9	124.3
0 4	Vegetables	278	89,583	100.0	89.8	109.3	112.9	116.4
0 4.1	Fresh vegetables	278	89,583	100.0	89.8	109.3	112.9	116.4
0 4.1.2	Tomatoes	89	28,805	100.0	76.4	120.0	96.0	115.9
0 4.1.9	Other fresh vegetables	188	60,778	100.0	96.2	104.2	121.0	116.6
0 4.1.9.9	Pepper	139	44,751	100.0	97.6	102.5	127.0	119.8
0 4.1.9.1	Cabbage	9	2,863	100.0	97.0	135.4	96.7	106.2
0 4.1.9.4	Cucumbers	13	4,054	100.0	88.8	100.2	98.9	98.7
0 4.1.9.6	Onions	8	2,426	100.0	87.7	78.6	101.8	85.9
0 4.1.9.7	Beans	7	2,318	100.0	108.7	137.6	146.2	162.4
0 4.1.9.9.9	Water melon	9	2,775	100.0	82.2	104.9	92.6	103.7
0 4.1.9.9.9.9	Other fresh vegetable;other	5	1,592	100.0	92.3	94.6	93.1	94.9
0 5	Potatoes	56	18,225	100.0	100.7	110.7	147.2	114.9
0 6	Fruits	42	13,515	100.0	104.5	101.1	153.2	135.5
0 6.1	Fresh fruits	14	4,420	100.0	100.7	110.6	105.5	117.6
0 6.1.1	Apple	6	1,966	100.0	101.0	109.8	107.6	112.2
0 6.1.2	Pears	1	453	100.0	103.4	105.8	110.6	116.6
0 6.1.9	Other fresh fruit	6	2,001	100.0	99.8	112.5	102.2	123.2
0 6.1.9.2	Plums	4	1,258	100.0	90.0	94.5	86.1	120.2
0 6.1.9.4	Nuts and dried fruit	1	231	100.0	130.1	158.2	147.4	156.4
0 6.1.9.9	Other fresh fruits; other	2	512	100.0	110.4	135.9	121.3	115.5
0 6.4.1	Desert grapes	9	2,975	100.0	119.2	115.6	108.7	126.7
0 6.4.9	Wine grapes	19	6,120	100.0	100.0	87.2	209.4	152.7
10	Crop Output	438	141,178	100.0	97.5	112.5	123.0	117.9
11	Animals	135	43,658	100.0	104.2	110.4	114.3	116.3
11.1	Cattle	83	26,729	100.0	105.5	113.1	115.0	117.2
11.2	Pigs	20	6,307	100.0	96.9	100.4	110.7	114.3
11.4	Sheep	27	8,781	100.0	104.1	109.4	114.1	114.2
11.5	Poultry	6	1,842	100.0	109.5	111.3	116.0	119.4
11.9	Other animals	-	-	-	-	-	-	-
12	Animal Products	427	137,766	100.0	105.4	111.1	115.1	115.0
12.1	Milk	405	130,566	100.0	104.8	110.0	114.6	114.3
12.2	Eggs	17	5,539	100.0	117.8	135.1	126.0	130.3
12.9	Other animal products	5	1,660	100.0	109.3	114.9	119.1	121.3
13	Animal Output	562	181,424	100.0	105.1	110.9	114.9	115.3
14	Total Output	1,000	322,602	100.0	101.7	111.6	118.4	116.5

Annual Agricultural Output Price Index 2011-2014 (EU disposition), (2010=100)

Table 2: Annual Agricultural Output Price Index 2011-2014(EU disposition), (2010 =100)

API code	Description	Wheight in 1000 Euro	2011	2012	2013	2014
010000	CEREALS (including seeds)	14,173	129.5	135.5	119.5	111.0
011000	Wheat and spelt	10,360	129.6	136.9	112.9	104.9
011100	Soft wheat and spelt	10,360	129.6	136.9	112.9	104.9
011200	Rye and meslin	98	121.6	122.5	128.5	118.3
013000	Barley	191	121.8	138.1	152.9	154.3
013100	Feed barley	140	121.8	138.1	152.9	154.3
013200	Malting barley	52	121.8	138.1	152.9	154.3
014000	Oats and summer cereal mixtures	276	127.6	128.9	150.6	131.8
015000	Grain maize	3,248	130.2	131.8	135.6	125.9
030000	FORAGE PLANTS	5,681	111.4	139.2	140.1	126.3
031000	Fodder maize	45	134.6	124.5	136.7	117.8
039000	Other forage plants	5637	111.2	139.3	140.1	126.4
039100	Hay	3149	115.8	149.5	152.9	136.8
039200	Straw	1234	104.2	122.4	114.0	101.8
039900	Other forage plants: others	1254	106.6	130.5	133.9	124.3
040000	VEGETABLES AND HORTICULTURAL PRODUCTS	89,583	89.8	109.3	112.9	116.4
041000	Fresh vegetables	89,583	89.8	109.3	112.9	116.4
041100	Cauliflower	72	92.3	134.5	117.8	103.4
041200	Tomatoes	28,805	76.4	120.0	96.0	115.9
041900	Other fresh vegetables	60,706	96.2	104.2	121.0	116.6
041910	Cabbage	2,863	97.0	135.4	96.7	106.2
041920	Lettuce	83	106.6	109.4	116.5	114.2
041930	Spinach	219	95.0	100.5	111.1	92.0
041940	Cucumbers	4,054	88.8	100.2	98.9	98.7
041950	Carrots	26	108.5	111.3	114.5	117.3
041960	Onions	2,426	87.7	78.6	101.8	85.9
041970	Green beans	10	100.0	100.0	100.0	100.2
041990	Peas	10	103.0	115.7	119.8	106.0
041999	Other fresh vegetables: other	51,015	97.1	104.0	125.0	120.2
050000	POTATOES (including seeds)	18,225	100.7	110.7	147.2	114.9
051000	Potatoes for consumption	0	100.7	110.7	147.2	114.9
060000	FRUITS	13,515	104.5	101.1	153.2	135.5
061000	Fresh fruit (excluding citrus fruit and grapes)	4,420	100.7	110.6	105.5	117.6
061100	Dessert apples	1966	101.0	109.8	107.6	112.2
061200	Dessert pears	453	103.4	105.8	110.6	116.6
061300	Peaches	11	96.4	103.7	113.5	99.4
061900	Other fresh fruit, nuts and dried fruit	1,990	99.9	112.5	102.2	123.4
061910	Cherries	38	120.1	142.6	123.4	136.6
061920	Plums	1258	90.0	94.5	86.1	120.2
061930	Strawberries	282	110.7	137.6	117.6	106.7
061940	Nuts and dried fruit	231	130.1	158.2	147.4	156.4
061941	Nuts	231	130.1	158.2	147.4	156.4
061990	Other fresh fruit: other	181	103.9	130.1	129.2	121.3
064000	Grapes	9,096	106.3	96.5	176.5	144.2
064100	Dessert grapes	2,975	119.2	115.6	108.7	126.7
064900	Other grapes, fresh	6,120	100.0	87.2	209.4	152.7
100000	CROP OUTPUT (010000 TO 090000), including fruits (060000) and vegetables (040000)	141,178	97.5	112.5	123.0	117.9
101000	CROP OUTPUT (010000 TO 090000), excluding fruits (060000) and vegetables (040000)	38,079	113.0	124.2	135.9	115.1
110000	ANIMALS	43,658	104.2	110.4	114.3	116.3
111000	Cattle	26,729	105.5	113.1	115.0	117.2
111100	Cattle excluding calves	21,636	105.5	113.0	115.3	116.8
111200	Calves	5,092	105.7	113.3	113.7	118.8
112000	Pigs	6,307	96.9	100.4	110.7	114.3
113000	Equines	0				
114000	Sheep and goats	8,781	104.1	109.4	114.1	114.2
115000	Poultry	1,842	109.5	111.3	116.0	119.4
115900	Chickens	1,840	109.5	111.3	116.0	119.4
119000	Other poultry	2	109.5	111.3	116.0	119.4
120000	ANIMAL PRODUCTS	137,766	105.4	111.1	115.1	115.0
121000	Milk	130,566	104.8	110.0	114.6	114.3
121100	Cows' milk	130,566	104.8	110.0	114.6	114.3
122000	Eggs	5,539	117.8	135.1	126.0	130.3
129000	Other animal products	1,660	109.3	114.9	119.1	121.3
130000	ANIMAL OUTPUT (110000+120000)	181,424	105.1	110.9	114.9	115.3
140000	AGRICULTURAL GOODS OUTPUT (100000+130000), including fruits (060000) and vegetables (040000)	322,602	101.7	111.6	118.4	116.5

Quarterly Agricultural Output Price Index 2010 - 2014(EU disposition), (2010=100)

Table 3: Quarterly Agricultural Output Price Index (EU disposition) 2010, (2010=100)

API code	Description	Q1-2010	Q2-2010	Q3-2010	Q4-2010
010000	CEREALS (including seeds)	81.7	80.3	101.5	118.0
011000	Wheat and spelt	81.5	80.3	100.5	118.2
011100	Soft wheat and spelt	81.5	80.3	100.5	118.2
012000	Rye and meslin	95.9	87.0	100.4	106.6
013000	Barley	97.3	93.6	99.1	110.0
013200	Malting barley	97.3	93.6	99.1	110.0
014000	Oats and summer cereal mixtures	109.6	92.6	94.0	104.1
015000	Grain maize	79.5	78.4	112.1	119.0
030000	FORAGE PLANTS	113.1	96.3	87.7	110.7
031000	Fodder maize	78.9	78.1	108.5	118.2
032000	Fodder root crops (including forage beet)
039000	Other forage plants	113.3	96.5	87.6	110.6
040000	VEGETABLES AND HORTICULTURAL PRODUCTS	117.1	129.3	92.9	96.6
041000	Fresh vegetables	117.1	129.3	92.9	96.6
041100	Cauliflower	.	.	107.7	69.0
041200	Tomatoes	.	112.3	91.8	121.7
041900	Other fresh vegetables	117.1	141.1	93.5	89.4
042000	Plants and flowers
050000	POTATOES (including seeds)	91.9	129.6	101.0	95.2
051000	Potatoes for consumption	91.9	129.6	101.0	95.2
060000	FRUITS	95.3	100.4	98.9	100.7
061000	Fresh fruit (excluding citrus fruit and grapes)	95.3	100.4	101.3	100.1
061100	Dessert apples	92.9	.	109.9	97.4
061200	Dessert pears	98.8	.	97.4	101.6
061300	Peaches	.	95.1	101.1	.
061900	Other fresh fruit, nuts and dried fruit	110.0	100.4	97.5	104.9
062000	Citrus fruit
063000	Tropical fruit
064000	Grapes	.	.	96.0	100.8
100000	CROP OUTPUT (010000 TO 090000), including fruits (060000) and vegetables (040000)	95.0	123.0	94.2	100.4
101000	CROP OUTPUT (010000 TO 090000), excluding fruits (060000) and vegetables (040000)	90.7	104.7	98.9	105.2
110000	ANIMALS	96.3	99.8	100.4	103.5
111000	Cattle	96.8	98.7	100.8	103.7
111100	Cattle excluding calves	96.8	98.7	100.8	103.7
111200	Calves	96.9	98.6	100.7	103.7
112000	Pigs	95.3	103.8	100.2	100.8
113000	Equines
114000	Sheep and goats	95.5	100.2	99.8	104.5
115000	Poultry	97.1	100.6	98.8	103.4
115100	Chickens	97.1	100.6	98.8	103.4
115900	Other poultry	97.1	100.6	98.8	103.4
119000	Other animals
120000	ANIMAL PRODUCTS	98.3	97.6	98.2	106.0
121000	Milk	98.3	97.8	98.0	105.8
121100	Cows' milk	98.3	97.8	98.0	105.8
121900	Other milk types
122000	Eggs	96.0	92.0	101.6	110.3
129000	Other animal products	100.2	100.2	98.9	100.8
130000	ANIMAL OUTPUT (110000+120000)	97.8	98.2	98.7	105.4
140000	AGRICULTURAL GOODS OUTPUT (100000+130000), including fruits (060000) and vegetables (040000)	97.3	105.6	96.0	103.0
141000	AGRICULTURAL GOODS OUTPUT (101000+130000), excluding fruits (060000) and vegetables (040000)	96.7	98.7	98.7	105.3

Table 4: Quarterly Agricultural Output Price Index (EU disposition) 2011, (2010=100)

API code	Description	Q1-2011	Q2-2011	Q3-2011	Q4-2011
010000	CEREALS (including seeds)	134.9	137.5	124.4	128.3
011000	Wheat and spelt	141.4	143.3	122.2	126.9
011100	Soft wheat and spelt	141.4	143.3	122.2	126.9
012000	Rye and meslin	122.2	117.2	121.8	122.4
013000	Barley	118.1	118.4	120.0	130.6
013200	Malting barley	118.1	118.4	120.0	130.6
014000	Oats and summer cereal mixtures	129.3	129.3	122.8	132.4
015000	Grain maize	121.1	129.7	143.9	131.3
030000	FORAGE PLANTS	124.1	120.6	100.4	113.6
031000	Fodder maize	119.5	133.7	143.5	130.2
032000	Fodder root crops (including forage beet)
039000	Other forage plants	124.2	120.4	100.1	113.5
040000	VEGETABLES AND HORTICULTURAL PRODUCTS	107.3	126.3	79.3	91.6
041000	Fresh vegetables	107.3	126.3	79.3	91.6
041100	Cauliflower	.	.	90.9	97.6
041200	Tomatoes	.	112.0	64.0	82.2
041900	Other fresh vegetables	107.3	136.2	87.1	94.3
042000	Plants and flowers
050000	POTATOES (including seeds)	130.0	154.8	81.4	83.8
051000	Potatoes for consumption	130.0	154.8	81.4	83.8
060000	FRUITS	100.2	111.6	106.7	103.6
061000	Fresh fruit (excluding citrus fruit and grapes)	100.2	111.6	96.1	104.2
061100	Dessert apples	95.0	.	104.2	102.2
061200	Dessert pears	113.3	.	98.8	103.8
061300	Peaches	.	111.8	93.1	.
061900	Other fresh fruit, nuts and dried fruit	127.1	111.6	91.9	108.7
062000	Citrus fruit
063000	Tropical fruit
064000	Grapes	.	.	119.7	103.5
100000	CROP OUTPUT (010000 TO 090000), including fruits (060000) and vegetables (040000)	125.6	129.7	84.3	98.3
101000	CROP OUTPUT (010000 TO 090000), excluding fruits (060000) and vegetables (040000)	131.2	141.7	101.1	103.3
110000	ANIMALS	102.1	102.1	106.6	105.8
111000	Cattle	102.7	103.0	107.9	108.5
111100	Cattle excluding calves	102.7	103.0	107.9	108.5
111200	Calves	102.8	103.1	108.0	108.7
112000	Pigs	97.7	95.3	99.8	94.7
113000	Equines
114000	Sheep and goats	102.4	102.6	107.3	104.1
115000	Poultry	108.3	108.8	108.3	112.7
115100	Chickens	108.3	108.8	108.3	112.7
115900	Other poultry	108.3	108.8	108.3	112.7
119000	Other animals
120000	ANIMAL PRODUCTS	104.9	105.3	103.6	107.6
121000	Milk	104.5	104.9	102.7	107.0
121100	Cows' milk	104.5	104.9	102.7	107.0
121900	Other milk types
122000	Eggs	113.1	114.5	122.0	121.7
129000	Other animal products	107.9	111.7	108.5	109.1
130000	ANIMAL OUTPUT (110000+120000)	104.3	104.6	104.3	107.2
140000	AGRICULTURAL GOODS OUTPUT (100000+130000), including fruits (060000) and vegetables (040000)	108.2	112.1	92.0	103.0
141000	AGRICULTURAL GOODS OUTPUT (101000+130000), excluding fruits (060000) and vegetables (040000)	108.3	107.9	103.6	106.3

Table 5: Quarterly Agricultural Output Price Index (EU disposition) 2012, (2010=100)

API code	Description	Q1-2012	Q2-2012	Q3-2012	Q4-2012
010000	CEREALS (including seeds)	129.5	127.5	135.1	142.9
011000	Wheat and spelt	130.1	129.2	135.6	145.7
011100	Soft wheat and spelt	130.1	129.2	135.6	145.7
012000	Rye and meslin	127.4	123.7	119.5	122.9
013000	Barley	134.3	139.7	134.1	144.3
013200	Malting barley	134.3	139.7	134.1	144.3
014000	Oats and summer cereal mixtures	135.0	138.2	121.3	131.9
015000	Grain maize	127.4	123.2	135.6	137.4
030000	FORAGE PLANTS	134.6	113.8	129.6	169.3
031000	Fodder maize	126.8	122.1	116.5	136.2
032000	Fodder root crops (including forage beet)
039000	Other forage plants	134.6	113.7	129.7	169.5
040000	VEGETABLES AND HORTICULTURAL PRODUCTS	116.0	157.6	99.4	100.0
041000	Fresh vegetables	116.0	157.6	99.4	100.0
041100	Cauliflower	.	.	148.1	80.0
041200	Tomatoes	.	158.8	112.2	98.4
041900	Other fresh vegetables	116.0	156.8	92.8	100.5
042000	Plants and flowers
050000	POTATOES (including seeds)	90.3	83.8	113.9	127.7
051000	Potatoes for consumption	90.3	83.8	113.9	127.7
060000	FRUITS	106.4	137.1	100.4	99.8
061000	Fresh fruit (excluding citrus fruit and grapes)	106.4	137.1	102.0	117.0
061100	Dessert apples	99.6	.	114.2	112.5
061200	Dessert pears	125.2	.	94.6	107.7
061300	Peaches	.	110.1	102.3	.
061900	Other fresh fruit, nuts and dried fruit	140.6	137.3	96.8	132.4
062000	Citrus fruit
063000	Tropical fruit
064000	Grapes	.	.	98.4	96.1
100000	CROP OUTPUT (010000 TO 090000), including fruits (060000) and vegetables (040000)	111.4	145.1	103.9	112.3
101000	CROP OUTPUT (010000 TO 090000), excluding fruits (060000) and vegetables (040000)	110.9	106.0	124.8	138.3
110000	ANIMALS	107.6	109.4	112.7	112.1
111000	Cattle	111.6	110.7	115.6	114.4
111100	Cattle excluding calves	111.5	110.7	115.4	114.4
111200	Calves	111.7	110.9	116.1	114.7
112000	Pigs	91.7	104.5	103.9	101.5
113000	Equines
114000	Sheep and goats	106.4	108.6	110.5	112.2
115000	Poultry	109.3	110.5	111.1	114.2
115100	Chickens	109.3	110.5	111.1	114.2
115900	Other poultry	109.3	110.5	111.1	114.2
119000	Other animals
120000	ANIMAL PRODUCTS	109.7	108.6	110.7	115.2
121000	Milk	108.3	107.8	109.8	114.0
121100	Cows' milk	108.3	107.8	109.8	114.0
121900	Other milk types
122000	Eggs	142.0	127.4	130.1	141.1
129000	Other animal products	113.0	111.7	115.6	119.4
130000	ANIMAL OUTPUT (110000+120000)	109.2	108.8	111.1	114.4
140000	AGRICULTURAL GOODS OUTPUT (100000+130000), including fruits (060000) and vegetables (040000)	109.6	119.7	106.7	113.5
141000	AGRICULTURAL GOODS OUTPUT (101000+130000), excluding fruits (060000) and vegetables (040000)	109.4	108.6	114.1	119.7

Table 6: Quarterly Agricultural Output Price Index (EU disposition) 2013, (2010=100)

API code	Description	Q1-2013	Q2-2013	Q3-2013	Q4-2013
010000	CEREALS (including seeds)	145.6	147.1	105.0	107.0
011000	Wheat and spelt	145.1	146.1	99.5	98.3
011100	Soft wheat and spelt	145.1	146.1	99.5	98.3
012000	Rye and meslin	130.3	130.9	129.0	125.8
013000	Barley	155.1	157.3	148.3	150.8
013200	Malting barley	155.1	157.3	148.3	150.8
014000	Oats and summer cereal mixtures	150.6	189.1	153.8	133.4
015000	Grain maize	146.3	146.4	134.5	123.9
030000	FORAGE PLANTS	171.8	137.8	131.2	133.9
031000	Fodder maize	145.2	145.5	137.3	123.9
032000	Fodder root crops (including forage beet)
039000	Other forage plants	171.9	137.7	131.2	133.9
040000	VEGETABLES AND HORTICULTURAL PRODUCTS	114.3	154.0	98.3	126.2
041000	Fresh vegetables	114.3	154.0	98.3	126.2
041100	Cauliflower	.	.	122.1	101.0
041200	Tomatoes	.	102.5	90.5	113.3
041900	Other fresh vegetables	114.3	189.5	102.3	129.9
042000	Plants and flowers
050000	POTATOES (including seeds)	136.5	174.5	151.3	142.2
051000	Potatoes for consumption	136.5	174.5	151.3	142.2
060000	FRUITS	117.9	120.1	104.6	175.1
061000	Fresh fruit (excluding citrus fruit and grapes)	117.9	120.1	98.6	106.0
061100	Dessert apples	110.0	.	109.9	104.9
061200	Dessert pears	137.1	.	105.9	107.6
061300	Peaches	.	146.8	106.2	.
061900	Other fresh fruit, nuts and dried fruit	159.9	120.0	92.1	107.2
062000	Citrus fruit
063000	Tropical fruit
064000	Grapes	.	.	112.1	189.7
100000	CROP OUTPUT (010000 TO 090000), including fruits (060000) and vegetables (040000)	138.1	154.1	104.2	138.8
101000	CROP OUTPUT (010000 TO 090000), excluding fruits (060000) and vegetables (040000)	144.4	157.1	130.1	128.7
110000	ANIMALS	112.1	114.0	114.9	116.1
111000	Cattle	113.9	113.5	115.8	116.8
111100	Cattle excluding calves	113.9	113.5	115.9	117.9
111200	Calves	113.9	113.6	115.2	112.2
112000	Pigs	103.9	116.4	111.0	111.6
113000	Equines
114000	Sheep and goats	112.0	112.7	115.2	116.5
115000	Poultry	114.5	118.7	112.8	117.9
115100	Chickens	114.5	118.7	112.8	117.9
115900	Other poultry	114.5	118.7	112.8	117.9
119000	Other animals
120000	ANIMAL PRODUCTS	118.6	116.0	112.6	113.1
121000	Milk	117.8	116.0	112.1	112.4
121100	Cows' milk	117.8	116.0	112.1	112.4
121900	Other milk types
122000	Eggs	137.9	116.3	122.5	127.1
129000	Other animal products	117.5	115.6	122.0	121.3
130000	ANIMAL OUTPUT (110000+120000)	117.0	115.5	113.1	113.8
140000	AGRICULTURAL GOODS OUTPUT (100000+130000), including fruits (060000) and vegetables (040000)	120.9	127.0	107.6	125.5
141000	AGRICULTURAL GOODS OUTPUT (101000+130000), excluding fruits (060000) and vegetables (040000)	121.1	119.3	116.8	117.1

Table 7: Quarterly Agricultural Output Price Index (EU disposition) 2014, (2010=100)

API code	Description	Q1-2014	Q2-2014	Q3-2014	Q4-2014
010000	CEREALS (including seeds)	119.8	113.7	106.9	108.4
011000	Wheat and spelt	105.4	104.9	103.9	105.8
011100	Soft wheat and spelt	105.4	104.9	103.9	105.8
012000	Rye and meslin	131.3	120.2	118.7	108.5
013000	Barley	157.3	151.4	153.3	155.3
013200	Malting barley	157.3	151.4	153.3	155.3
014000	Oats and summer cereal mixtures	142.2	140.1	121.8	135.6
015000	Grain maize	150.0	124.7	123.1	111.3
030000	FORAGE PLANTS	150.6	120.2	121.1	121.6
031000	Fodder maize	155.0	124.5	105.7	111.2
032000	Fodder root crops (including forage beet)
039000	Other forage plants	150.6	120.1	121.3	121.7
040000	VEGETABLES AND HORTICULTURAL PRODUCTS	119.3	123.9	110.3	129.9
041000	Fresh vegetables	119.3	123.9	110.3	129.9
041100	Cauliflower	.	.	104.0	101.0
041200	Tomatoes	.	126.9	106.9	143.5
041900	Other fresh vegetables	119.3	121.7	112.1	125.9
042000	Plants and flowers
050000	POTATOES (including seeds)	123.3	140.8	103.7	111.6
051000	Potatoes for consumption	123.3	140.8	103.7	111.6
060000	FRUITS	128.0	112.1	122.4	141.8
061000	Fresh fruit (excluding citrus fruit and grapes)	128.0	112.1	120.6	111.2
061100	Dessert apples	123.2	.	120.4	101.0
061200	Dessert pears	129.2	.	118.1	113.1
061300	Peaches	.	110.1	97.1	.
061900	Other fresh fruit, nuts and dried fruit	162.5	112.1	121.2	131.8
062000	Citrus fruit
063000	Tropical fruit
064000	Grapes	.	.	124.6	148.2
100000	CROP OUTPUT (010000 TO 090000), including fruits (060000) and vegetables (040000)	124.6	124.3	110.4	126.8
101000	CROP OUTPUT (010000 TO 090000), excluding fruits (060000) and vegetables (040000)	125.4	126.6	108.0	111.7
110000	ANIMALS	118.0	116.0	116.5	114.5
111000	Cattle	118.1	115.6	118.7	116.4
111100	Cattle excluding calves	118.1	115.3	118.6	115.2
111200	Calves	118.1	116.6	118.9	121.5
112000	Pigs	117.0	121.2	114.2	104.8
113000	Equines
114000	Sheep and goats	117.6	112.9	111.2	115.2
115000	Poultry	122.4	118.7	119.5	117.0
115100	Chickens	122.4	118.7	119.5	117.0
115900	Other poultry	122.4	118.7	119.5	117.0
119000	Other animals
120000	ANIMAL PRODUCTS	117.4	115.3	115.0	112.5
121000	Milk	116.3	114.8	114.7	111.4
121100	Cows' milk	116.3	114.8	114.7	111.4
121900	Other milk types
122000	Eggs	139.9	123.2	122.3	135.9
129000	Other animal products	125.2	120.7	117.5	122.0
130000	ANIMAL OUTPUT (110000+120000)	117.5	115.4	115.4	113.0
140000	AGRICULTURAL GOODS OUTPUT (100000+130000), including fruits (060000) and vegetables (040000)	118.8	118.1	112.3	119.5
141000	AGRICULTURAL GOODS OUTPUT (101000+130000), excluding fruits (060000) and vegetables (040000)	118.7	116.4	113.8	112.7

Monthly Agriculture Output Price Index 2010-2014 (2010=100)**Table 8: Monthly Agricultural Output Price Index (Kosovo disposition) Jan-Jun 2010, (2010=100)**

Item code	Groups	Weight in %	Weight 1000 Euro	2010					
				Jan	Feb	Mar	Apr	Maj	Jun
0 1	Cereals	44	14,173	81.6	82.3	81.9	81.0	79.3	80.6
0 1.1	Wheat	32	10,360	80.1	82.4	82.4	81.6	79.4	79.4
0 1.3	Barley	1	191	103.2	94.3	94.3	95.0	91.2	94.5
0 1.5	Maize	10	3,248	81.3	78.7	78.0	76.8	76.8	82.6
0 1.9	Other cereals	1	375	112.9	104.7	96.9	91.1	91.1	91.1
0 3	Forage plants	18	5,681	115.6	111.0	102.5	97.7	94.2	94.5
0 3.1	Fodder maize	0	45	80.6	78.1	77.3	74.9	74.9	80.6
0 3.9	Other forage plants	17	5,637	115.9	111.2	102.7	97.9	94.3	94.6
0 3.9.1	Hay	10	3,149	126.9	118.2	108.4	97.3	93.6	92.4
0 3.9.2	Straw	4	1,234	89.7	97.5	93.7	100.9	96.1	98.5
0 3.9.9	Other forage plants ;others	4	1,254	114.0	107.2	97.3	96.3	94.4	96.3
0 4	Vegetables	278	89,583	112.8	127.5	108.1	113.8	127.4	130.9
0 4.1	Fresh vegetables	278	89,583	112.8	127.5	108.1	113.8	127.4	130.9
0 4.1.2	Tomatoes	89	28,805	113.4	111.9
0 4.1.9	Other fresh vegetables	188	60,778	112.8	127.5	108.1	113.8	136.0	146.0
0 4.1.9	Pepper	139	44,751	140.5	165.0
0 4.1.9.1	Cabbage	9	2,863	138.9	150.8	.	.	.	119.0
0 4.1.9.4	Cucumbers	13	4,054	148.9	90.5
0 4.1.9.6	Onions	8	2,426	109.8	146.4	115.0	124.4	113.9	106.5
0 4.1.9.7	Beans	7	2,318	101.8	100.2	100.2	97.8	97.8	95.5
0 4.1.9	Water melon	9	2,775
0 4.1.9.9.9	Other fresh vegetable;other	5	1,592	92.5	92.2	110.4	101.1	88.5	102.1
0 5	Potatoes	56	18,225	90.1	90.1	97.4	94.9	124.2	160.7
0 6	Fruits	42	13,515	99.3	89.8	97.7	97.7	111.6	92.5
0 6.1	Fresh fruits	14	4,420	99.3	89.8	97.7	97.7	111.6	92.5
0 6.1.1	Apple	6	1,966	96.8	88.9
0 6.1.2	Pears	1	453	98.8
0 6.1.9	Other fresh fruit	6	2,001	115.7	103.5	97.7	97.7	111.6	92.5
0 6.1.9.2	Plums	4	1,258
0 6.1.9.4	Nuts and dried fruit	1	231	117.5	97.7	97.7	97.7	96.0	97.7
0 6.1.9.9	Other fresh fruits; other	2	512	105.3	114.9	.	.	112.5	92.4
0 6.4	Desert grapes	9	2,975
06.4.9	Wine grapes	19	6,120
10	Crop Output	438	141,178	105.5	113.9	102.9	105.9	119.3	124.6
11	Animals	135	43,658	95.2	96.8	96.9	99.7	99.9	99.9
11.1	Cattle	83	26,729	97.0	97.1	96.3	98.4	98.4	99.1
11.2	Pigs	20	6,307	87.7	99.0	99.0	103.8	103.8	103.8
11.4	Sheep	27	8,781	94.6	94.6	97.2	99.8	101.1	99.8
11.5	Poultry	6	1,842	97.8	96.1	97.5	102.6	101.1	98.2
11.9	Other animals	-	0
12	Animal Products	427	137,766	97.2	98.6	98.9	97.1	98.1	97.7
12.1	Milk	405	130,566	97.2	98.7	99.1	97.2	98.2	98.2
12.2	Eggs	17	5,539	98.1	96.5	93.5	95.1	95.1	85.9
12.9	Other animal products	5	1,660	100.2	100.2	100.2	100.2	100.2	100.2
13	Animal Output	562	181,424	96.8	98.2	98.4	97.7	98.5	98.2
14	Total Output	1,000	322,602	100.6	105.0	100.4	101.3	107.6	109.8

Table 9: Monthly Agricultural Output Price Index (Kosovo disposition) Jul-Dec 2010, (2010 = 100)

Item code	Groups	Weight in %	Weight 1000 Euro	2010					
				Jul	Aug	Sep	Oct	Nov	Dec
0 1	Cereals	44	14,173	84.5	110.6	110.5	110.9	114.7	130.1
0 1.1	Wheat	32	10,360	80.1	110.1	108.6	108.6	113.8	134.8
0 1.3	Barley	1	191	94.5	100.4	102.6	102.6	111.9	115.6
0 1.5	Maize	10	3,248	97.2	114.3	118.7	120.0	118.7	118.1
0 1.9	Other cereals	1	375	89.3	99.3	97.6	100.4	103.2	111.6
0 3	Forage plants	18	5,681	87.0	88.3	89.0	105.5	108.6	119.4
0 3.1	Fodder maize	0	45	96.3	113.3	117.7	119.0	118.4	117.1
0 3.9	Other forage plants	17	5,637	87.0	88.2	88.7	105.4	108.5	119.4
0 3.9.1	Hay	10	3,149	81.3	81.3	81.3	105.9	112.1	125.6
0 3.9.2	Straw	4	1,234	93.0	98.5	101.2	109.7	107.3	114.5
0 3.9.9	Other forage plants ;others	4	1,254	95.2	95.2	95.2	99.7	100.9	108.8
0 4	Vegetables	278	89,583	112.0	89.9	84.4	98.2	81.3	95.3
0 4.1	Fresh vegetables	278	89,583	112.0	89.9	84.4	98.2	81.3	95.3
0 4.1.2	Tomatoes	89	28,805	91.1	93.6	90.5	121.7	.	.
0 4.1.9	Other fresh vegetables	188	60,778	130.3	88.1	82.1	90.0	81.3	95.3
0 4.1.9	Pepper	139	44,751	140.1	87.5	78.6	85.8	.	.
0 4.1.9.1	Cabbage	9	2,863	134.9	103.2	95.2	99.2	75.4	91.3
0 4.1.9.4	Cucumbers	13	4,054	79.7	76.1	113.2	140.5	.	.
0 4.1.9.6	Onions	8	2,426	88.9	70.6	70.6	75.8	70.6	81.0
0 4.1.9.7	Beans	7	2,318	96.3	94.7	101.8	101.0	99.4	104.2
0 4.1.9	Water melon	9	2,775	108.4	102.9	96.0	.	.	.
0 4.1.9.9.9	Other fresh vegetable;other	5	1,592	119.5	92.2	99.2	95.8	96.9	104.9
0 5	Potatoes	56	18,225	109.6	97.4	99.8	97.4	94.9	92.5
0 6	Fruits	42	13,515	115.8	100.4	94.0	90.8	113.8	97.9
0 6.1	Fresh fruits	14	4,420	115.8	95.3	96.5	106.3	92.1	97.9
0 6.1.1	Apple	6	1,966	104.4	96.4	120.2	108.5	90.9	90.9
0 6.1.2	Pears	1	453	104.8	96.1	94.9	94.9	97.5	114.7
0 6.1.9	Other fresh fruit	6	2,001	121.1	94.9	79.7	107.4	90.2	108.7
0 6.1.9.2	Plums	4	1,258	126.2	94.1	76.3	110.7	.	.
0 6.1.9.4	Nuts and dried fruit	1	231	97.7	97.7	101.7	91.6	90.0	108.9
06.1.9.9	Other fresh fruits; other	2	512	96.7	99.8	100.0	94.1	90.8	107.5
0 6.4	Desert grapes	9	2,975	.	112.4	92.5	91.6	122.2	.
06.4.9	Wine grapes	19	6,120	.	.	.	87.2	115.6	.
10	Crop Output	438	141,178	108.3	93.9	90.1	98.9	90.6	99.6
11	Animals	135	43,658	99.4	99.4	102.5	102.1	103.7	104.6
11.1	Cattle	83	26,729	99.8	99.1	103.4	102.7	104.8	103.7
11.2	Pigs	20	6,307	99.9	100.3	100.3	100.9	98.2	103.2
11.4	Sheep	27	8,781	97.9	99.8	101.7	101.7	103.6	108.2
11.5	Poultry	6	1,842	98.7	97.5	100.4	98.9	105.6	105.7
11.9	Other animals	-	0
12	Animal Products	427	137,766	98.1	98.0	98.4	105.4	105.7	106.8
12.1	Milk	405	130,566	98.2	97.7	98.2	105.5	105.5	106.5
12.2	Eggs	17	5,539	95.8	104.7	104.3	104.3	112.5	114.2
12.9	Other animal products	5	1,660	100.2	98.2	98.2	100.2	100.2	102.1
13	Animal Output	562	181,424	98.4	98.3	99.4	104.6	105.2	106.2
14	Total Output	1,000	322,602	102.7	96.4	95.3	102.1	98.8	103.4

Table 10: Monthly Agricultural Output Price Index (Kosovo disposition) Jan-Jun 2011, (2010 = 100)

Item code	Groups	Weight in ‰	Weight 1000 Euro	2011					
				Jan	Feb	Mar	Apr	Maj	Jun
0 1	Cereals	44	14,173	134.8	135.8	138.1	137.2	141.0	140.6
0 1.1	Wheat	32	10,360	140.8	140.8	143.0	143.0	144.5	142.3
0 1.3	Barley	1	191	111.9	124.3	118.1	124.3	115.4	115.4
0 1.5	Maize	10	3,248	118.1	121.3	124.5	121.3	132.7	137.8
0 1.9	Other cereals	1	375	126.8	127.6	128.1	121.2	127.3	131.4
0 3	Forage plants	18	5,681	117.6	128.6	124.1	125.1	120.6	111.6
0 3.1	Fodder maize	0	45	116.5	120.3	123.4	122.8	131.6	136.6
0 3.9	Other forage plants	17	5,637	117.7	128.7	124.1	125.1	120.5	111.4
0 3.9.1	Hay	10	3,149	124.4	139.2	131.8	129.3	121.9	110.9
0 3.9.2	Straw	4	1,234	112.1	121.2	112.1	124.2	124.2	118.2
0 3.9.9	Other forage plants ;others	4	1,254	106.2	109.6	116.6	115.4	113.1	106.2
0 4	Vegetables	278	89,583	99.2	121.5	98.9	96.5	118.7	131.3
0 4.1	Fresh vegetables	278	89,583	99.2	121.5	98.9	96.5	118.7	131.3
0 4.1.2	Tomatoes	89	28,805	112.4	111.9
0 4.1.9	Other fresh vegetables	188	60,778	99.2	121.5	98.9	96.5	122.6	146.6
0 4.1.9	Pepper	139	44,751	129.9	164.1
0 4.1.9.1	Cabbage	9	2,863	103.2	178.6	.	.	.	115.1
0 4.1.9.4	Cucumbers	13	4,054	103.8	97.5
0 4.1.9.6	Onions	8	2,426	82.4	91.5	91.5	95.3	112.1	105.4
0 4.1.9.7	Beans	7	2,318	107.4	101.0	101.8	96.3	96.3	100.2
0 4.1.9	Water melon	9	2,775
0 4.1.9.9.9	Other fresh vegetable;other	5	1,592	106.9	114.7	118.5	103.9	93.6	117.1
0 5	Potatoes	56	18,225	94.9	150.9	160.7	170.4	185.0	124.2
0 6	Fruits	42	13,515	96.5	104.1	129.0	140.7	142.5	88.3
0 6.1	Fresh fruits	14	4,420	96.5	104.1	129.0	140.7	142.5	88.3
0 6.1.1	Apple	6	1,966	88.0	102.6
0 6.1.2	Pears	1	453	113.3
0 6.1.9	Other fresh fruit	6	2,001	127.4	125.5	129.0	140.7	142.5	88.3
0 6.1.9.2	Plums	4	1,258
0 6.1.9.4	Nuts and dried fruit	1	231	126.3	117.3	129.0	140.7	140.7	144.7
0 6.1.9.9	Other fresh fruits; other	2	512	133.6	141.7	.	.	142.6	86.6
0 6.4	Desert grapes	9	2,975
06.4.9	Wine grapes	19	6,120
10	Crop Output	438	141,178	102.7	125.4	114.7	115.5	131.9	126.4
11	Animals	135	43,658	101.3	101.6	103.6	103.0	102.9	100.3
11.1	Cattle	83	26,729	99.5	102.0	106.6	103.8	103.4	102.0
11.2	Pigs	20	6,307	100.0	96.5	96.5	97.3	97.3	91.3
11.4	Sheep	27	8,781	106.2	102.4	98.5	103.0	104.3	100.4
11.5	Poultry	6	1,842	107.2	109.8	107.9	111.5	107.9	106.9
11.9	Other animals	-	0
12	Animal Products	427	137,766	104.8	104.5	105.5	106.9	106.0	103.1
12.1	Milk	405	130,566	104.5	104.0	105.0	106.5	105.5	102.6
12.2	Eggs	17	5,539	111.0	113.5	114.7	114.9	116.3	112.4
12.9	Other animal products	5	1,660	105.9	105.9	111.7	111.7	111.7	111.7
13	Animal Output	562	181,424	104.0	103.8	105.0	106.0	105.3	102.4
14	Total Output	1,000	322,602	103.4	113.2	109.3	110.1	116.9	112.9

Table 11: Monthly Agricultural Output Price Index (Kosovo disposition) Jul-Dec 2011, (2010 = 100)

Item code	Groups	Weight in %	Weight 1000 Euro	2011					
				Jul	Aug	Sep	Oct	Nov	Dec
0 1	Cereals	44	14,173	122.5	131.7	127.7	129.4	127.3	127.2
0 1.1	Wheat	32	10,360	119.1	124.3	122.8	126.6	126.6	127.8
0 1.3	Barley	1	191	123.7	119.7	116.6	130.3	130.3	131.2
0 1.5	Maize	10	3,248	133.4	157.5	144.1	138.4	128.9	125.1
0 1.9	Other cereals	1	375	121.1	119.6	126.2	129.8	131.1	128.2
0 3	Forage plants	18	5,681	100.0	102.5	98.2	104.6	117.2	118.4
0 3.1	Fodder maize	0	45	132.2	156.2	142.9	137.3	127.8	124.0
0 3.9	Other forage plants	17	5,637	99.7	102.1	97.8	104.3	117.1	118.4
0 3.9.1	Hay	10	3,149	109.6	105.5	101.0	108.0	123.2	124.4
0 3.9.2	Straw	4	1,234	72.7	93.9	90.9	94.5	104.5	104.5
0 3.9.9	Other forage plants ;others	4	1,254	101.6	101.6	96.6	104.8	114.3	117.1
0 4	Vegetables	278	89,583	98.0	76.5	70.9	90.8	95.1	101.6
0 4.1	Fresh vegetables	278	89,583	98.0	76.5	70.9	90.8	95.1	101.6
0 4.1.2	Tomatoes	89	28,805	83.8	55.8	52.5	82.2	.	.
0 4.1.9	Other fresh vegetables	188	60,778	110.4	86.4	77.8	93.8	95.1	101.6
0 4.1.9	Pepper	139	44,751	121.3	88.9	74.2	93.7	.	.
0 4.1.9.1	Cabbage	9	2,863	79.4	84.9	79.4	83.3	95.2	119.0
0 4.1.9.4	Cucumbers	13	4,054	55.9	83.1	104.5	105.6	.	.
0 4.1.9.6	Onions	8	2,426	81.0	75.8	70.6	75.8	68.0	67.5
0 4.1.9.7	Beans	7	2,318	97.8	102.6	116.1	117.7	115.3	115.3
0 4.1.9	Water melon	9	2,775	89.8	67.2	92.6	.	.	.
0 4.1.9.9.9	Other fresh vegetable;other	5	1,592	94.1	79.1	84.2	87.1	86.5	100.0
0 5	Potatoes	56	18,225	92.5	75.5	80.3	84.2	81.8	85.7
0 6	Fruits	42	13,515	115.1	101.3	107.0	95.1	114.6	105.7
0 6.1	Fresh fruits	14	4,420	115.1	89.2	88.9	104.1	103.0	105.7
0 6.1.1	Apple	6	1,966	104.4	96.4	108.5	105.6	100.6	99.7
0 6.1.2	Pears	1	453	106.2	104.9	92.3	98.8	106.7	106.7
0 6.1.9	Other fresh fruit	6	2,001	119.9	85.2	74.3	104.2	108.7	133.9
0 6.1.9.2	Plums	4	1,258	119.8	79.1	68.5	100.9	.	.
0 6.1.9.4	Nuts and dried fruit	1	231	172.0	199.4	140.7	127.9	112.8	143.1
06.1.9.9	Other fresh fruits; other	2	512	116.9	120.1	101.6	91.9	91.5	97.0
0 6.4	Desert grapes	9	2,975	.	130.2	117.6	118.6	118.6	.
06.4.9	Wine grapes	19	6,120	.	.	.	87.2	115.6	.
10	Crop Output	438	141,178	101.4	85.3	82.4	94.8	99.4	103.2
11	Animals	135	43,658	103.8	107.5	108.6	106.0	105.7	105.7
11.1	Cattle	83	26,729	104.1	109.1	110.5	107.0	108.7	109.8
11.2	Pigs	20	6,307	96.5	100.5	102.6	103.2	91.5	89.3
11.4	Sheep	27	8,781	106.9	107.5	107.5	104.3	104.9	103.0
11.5	Poultry	6	1,842	109.1	108.3	107.6	110.8	113.4	113.8
11.9	Other animals	-	0
12	Animal Products	427	137,766	102.0	104.7	104.1	104.5	107.5	110.8
12.1	Milk	405	130,566	101.6	103.6	103.1	104.0	107.0	109.9
12.2	Eggs	17	5,539	109.5	130.4	126.2	114.2	120.0	130.8
12.9	Other animal products	5	1,660	107.9	109.8	107.9	107.9	107.9	111.7
13	Animal Output	562	181,424	102.4	105.4	105.2	104.9	107.1	109.6
14	Total Output	1,000	322,602	102.0	96.6	95.2	100.5	103.7	106.8

Table 12: Monthly Agricultural Output Price Index (Kosovo disposition) Jan-Jun 2012, (2010 = 100)

Item code	Groups	Weight in %	Weight 1000 Euro	2012					
				Jan	Feb	Mar	Apr	Maj	Jun
0 1	Cereals	44	14,173	129.4	130.8	128.9	127.5	128.4	128.6
0 1.1	Wheat	32	10,360	129.1	130.3	131.6	129.1	129.5	129.1
0 1.3	Barley	1	191	131.2	138.1	133.5	138.7	140.1	140.1
0 1.5	Maize	10	3,248	130.2	131.4	119.4	121.3	123.2	125.7
0 1.9	Other cereals	1	375	130.4	133.9	135.9	132.5	138.7	132.6
0 3	Forage plants	18	5,681	126.1	138.2	136.0	125.1	116.5	110.2
0 3.1	Fodder maize	0	45	129.1	130.3	118.4	120.3	118.4	124.7
0 3.9	Other forage plants	17	5,637	126.1	138.2	136.2	125.2	116.4	110.0
0 3.9.1	Hay	10	3,149	134.3	147.8	144.1	133.0	124.4	113.3
0 3.9.2	Straw	4	1,234	110.5	125.4	125.4	110.5	103.6	106.6
0 3.9.9	Other forage plants ;others	4	1,254	120.9	126.8	126.8	119.9	109.1	105.2
0 4	Vegetables	278	89,583	110.2	134.6	97.1	89.2	150.7	164.1
0 4.1	Fresh vegetables	278	89,583	110.2	134.6	97.1	89.2	150.7	164.1
0 4.1.2	Tomatoes	89	28,805	160.1	158.3
0 4.1.9	Other fresh vegetables	188	60,778	110.2	134.6	97.1	89.2	144.9	168.7
0 4.1.9	Pepper	139	44,751	160.8	193.6
0 4.1.9.1	Cabbage	9	2,863	146.8	226.2	.	.	.	134.9
0 4.1.9.4	Cucumbers	13	4,054	125.9	109.5
0 4.1.9.6	Onions	8	2,426	74.0	76.6	74.0	75.4	76.4	86.7
0 4.1.9.7	Beans	7	2,318	119.3	119.3	123.3	119.3	123.3	117.7
0 4.1.9	Water melon	9	2,775
0 4.1.9.9.9	Other fresh vegetable;other	5	1,592	87.0	95.4	89.9	76.4	74.0	99.8
0 5	Potatoes	56	18,225	89.1	96.4	84.2	55.0	46.7	129.0
0 6	Fruits	42	13,515	107.2	104.0	136.8	136.8	162.0	119.5
0 6.1	Fresh fruits	14	4,420	107.2	104.0	136.8	136.8	162.0	119.5
0 6.1.1	Apple	6	1,966	96.8	102.6
0 6.1.2	Pears	1	453	125.2
0 6.1.9	Other fresh fruit	6	2,001	148.9	123.0	136.8	136.8	162.0	119.5
0 6.1.9.2	Plums	4	1,258
0 6.1.9.4	Nuts and dried fruit	1	231	154.9	125.1	136.8	136.8	129.0	136.8
0 6.1.9.9	Other fresh fruits; other	2	512	114.7	118.7	.	.	163.8	118.9
0 6.4	Desert grapes	9	2,975
06.4.9	Wine grapes	19	6,120
10	Crop Output	438	141,178	109.7	126.5	104.0	94.6	134.7	149.6
11	Animals	135	43,658	106.0	108.8	107.9	108.3	107.8	112.0
11.1	Cattle	83	26,729	109.8	113.7	111.2	110.1	110.1	112.0
11.2	Pigs	20	6,307	91.1	91.1	92.9	100.0	100.0	113.4
11.4	Sheep	27	8,781	104.9	106.2	108.2	108.2	106.2	111.4
11.5	Poultry	6	1,842	107.6	111.2	109.1	111.2	109.1	111.2
11.9	Other animals	-	0
12	Animal Products	427	137,766	109.5	109.6	110.1	110.4	108.9	106.7
12.1	Milk	405	130,566	108.5	108.5	108.0	109.0	108.0	106.5
12.2	Eggs	17	5,539	131.1	135.1	159.8	142.9	130.0	109.3
12.9	Other animal products	5	1,660	115.6	111.7	111.7	111.7	111.7	111.7
13	Animal Output	562	181,424	108.6	109.4	109.6	109.9	108.6	108.0
14	Total Output	1,000	322,602	109.1	116.9	107.1	103.2	120.1	126.2

Table 13: Monthly Agricultural Output Price Index (Kosovo disposition) Jul-Dec 2012, (2010 = 100)

Item code	Groups	Weight in %	Weight 1000 Euro	2012					
				Jul	Aug	Sep	Oct	Nov	Dec
0 1	Cereals	44	14,173	128.8	138.8	137.2	141.7	142.5	146.2
0 1.1	Wheat	32	10,360	128.8	139.3	137.8	144.5	144.5	148.3
0 1.3	Barley	1	191	130.9	135.1	136.2	140.9	141.7	150.3
0 1.5	Maize	10	3,248	128.9	140.3	137.2	134.6	137.2	141.0
0 1.9	Other cereals	1	375	127.8	114.0	121.2	125.5	133.6	130.1
0 3	Forage plants	18	5,681	106.4	136.4	143.1	161.3	167.1	178.1
0 3.1	Fodder maize	0	45	79.2	139.2	136.0	133.5	136.0	139.8
0 3.9	Other forage plants	17	5,637	106.6	136.4	143.1	161.5	167.4	178.4
0 3.9.1	Hay	10	3,149	112.1	142.9	149.0	173.7	178.6	193.4
0 3.9.2	Straw	4	1,234	101.9	128.8	140.5	142.9	149.9	158.7
0 3.9.9	Other forage plants ;others	4	1,254	97.3	127.4	130.9	149.4	156.3	160.2
0 4	Vegetables	278	89,583	114.1	85.8	102.2	98.3	109.6	118.1
0 4.1	Fresh vegetables	278	89,583	114.1	85.8	102.2	98.3	109.6	118.1
0 4.1.2	Tomatoes	89	28,805	119.0	96.1	121.3	98.4	.	.
0 4.1.9	Other fresh vegetables	188	60,778	109.8	80.8	95.0	98.2	109.6	118.1
0 4.1.9	Pepper	139	44,751	114.2	76.9	90.9	90.8	.	.
0 4.1.9.1	Cabbage	9	2,863	150.8	119.0	142.9	150.8	103.2	115.1
0 4.1.9.4	Cucumbers	13	4,054	71.6	85.4	124.7	111.2	.	.
0 4.1.9.6	Onions	8	2,426	67.5	64.8	79.2	83.7	86.3	91.5
0 4.1.9.7	Beans	7	2,318	119.3	131.3	153.5	160.7	149.6	147.2
0 4.1.9	Water melon	9	2,775	120.0	99.5	106.3	.	.	.
0 4.1.9.9.9	Other fresh vegetable;other	5	1,592	115.1	85.8	98.6	85.7	96.2	102.6
0 5	Potatoes	56	18,225	98.8	112.0	119.3	125.6	129.0	129.0
0 6	Fruits	42	13,515	115.4	102.2	95.7	97.1	101.2	119.6
0 6.1	Fresh fruits	14	4,420	115.4	88.2	104.6	113.6	120.4	119.6
0 6.1.1	Apple	6	1,966	104.4	96.4	129.0	111.4	115.8	110.0
0 6.1.2	Pears	1	453	102.2	92.8	92.3	92.3	109.4	125.2
0 6.1.9	Other fresh fruit	6	2,001	120.7	84.7	89.1	122.6	156.0	159.7
0 6.1.9.2	Plums	4	1,258	115.5	74.9	81.3	117.7	.	.
0 6.1.9.4	Nuts and dried fruit	1	231	150.1	152.5	156.4	160.4	169.2	171.7
06.1.9.9	Other fresh fruits; other	2	512	144.7	147.3	131.9	96.2	100.5	111.8
0 6.4	Desert grapes	9	2,975	.	135.5	90.6	122.2	150.9	.
06.4.9	Wine grapes	19	6,120	.	.	.	87.2	87.2	.
10	Crop Output	438	141,178	113.4	98.1	108.9	108.6	116.9	124.9
11	Animals	135	43,658	111.0	114.3	112.7	111.4	110.9	114.1
11.1	Cattle	83	26,729	114.5	116.6	115.5	113.3	112.6	117.3
11.2	Pigs	20	6,307	102.7	104.5	104.5	100.9	101.8	101.8
11.4	Sheep	27	8,781	106.9	114.6	110.1	111.4	112.0	113.3
11.5	Poultry	6	1,842	107.6	113.1	112.7	118.7	111.5	112.3
11.9	Other animals	-	0
12	Animal Products	427	137,766	108.3	110.9	112.8	113.3	114.3	118.0
12.1	Milk	405	130,566	107.5	109.9	111.9	111.9	113.4	116.8
12.2	Eggs	17	5,539	124.5	131.4	134.2	143.2	135.6	144.6
12.9	Other animal products	5	1,660	115.6	115.6	115.6	119.4	119.4	119.4
13	Animal Output	562	181,424	108.9	111.7	112.8	112.8	113.5	117.0
14	Total Output	1,000	322,602	110.9	105.7	111.1	111.0	115.0	120.5

Table 14 Monthly Agricultural Output Price Index (Kosovo disposition) Jan-Jun 2013, (2010 = 100)

Item code	Groups	Weight in %	Weight 1000 Euro	2013					
				Jan	Feb	Mar	Apr	Maj	Jun
0 1	Cereals	44	14,173	145.6	145.6	145.3	144.1	150.8	147.2
0 1.1	Wheat	32	10,360	145.3	145.3	144.5	142.3	150.5	146.8
0 1.3	Barley	1	191	146.8	155.4	163.2	160.0	159.4	152.4
0 1.5	Maize	10	3,248	147.3	146.1	145.4	145.4	148.0	146.1
0 1.9	Other cereals	1	375	137.1	145.9	157.5	175.3	180.3	165.3
0 3	Forage plants	18	5,681	171.8	165.3	167.7	152.7	148.5	142.0
0 3.1	Fodder maize	0	45	146.1	144.8	144.2	144.2	146.7	144.8
0 3.9	Other forage plants	17	5,637	172.0	165.5	167.9	152.8	148.5	142.0
0 3.9.1	Hay	10	3,149	187.2	178.6	184.8	168.7	163.8	156.4
0 3.9.2	Straw	4	1,234	149.1	145.3	139.6	122.4	120.4	114.7
0 3.9.9	Other forage plants ;others	4	1,254	156.3	152.4	153.4	142.5	137.6	132.7
0 4	Vegetables	278	89,583	115.3	115.4	110.7	116.4	147.9	158.6
0 4.1	Fresh vegetables	278	89,583	115.3	115.4	110.7	116.4	147.9	158.6
0 4.1.2	Tomatoes	89	28,805	101.6	102.9
0 4.1.9	Other fresh vegetables	188	60,778	115.3	115.4	110.7	116.4	176.3	202.4
0 4.1.9	Pepper	139	44,751	199.9	235.8
0 4.1.9.1	Cabbage	9	2,863	111.1	111.1	.	.	.	242.1
0 4.1.9.4	Cucumbers	13	4,054	115.1	84.1
0 4.1.9.6	Onions	8	2,426	94.1	96.7	94.1	112.8	117.2	137.4
0 4.1.9.7	Beans	7	2,318	143.2	143.2	136.0	133.6	139.2	140.8
0 4.1.9	Water melon	9	2,775
0 4.1.9.9.9	Other fresh vegetable;other	5	1,592	94.7	93.7	79.9	83.6	100.2	111.4
0 5	Potatoes	56	18,225	136.3	138.8	133.9	129.0	136.3	233.7
0 6	Fruits	42	13,515	122.1	110.9	148.6	148.6	121.1	118.2
0 6.1	Fresh fruits	14	4,420	122.1	110.9	148.6	148.6	121.1	118.2
0 6.1.1	Apple	6	1,966	111.4	108.5
0 6.1.2	Pears	1	453	137.1
0 6.1.9	Other fresh fruit	6	2,001	169.1	144.6	148.6	148.6	121.1	118.2
0 6.1.9.2	Plums	4	1,258
0 6.1.9.4	Nuts and dried fruit	1	231	176.3	148.6	148.6	148.6	152.5	148.6
0 6.1.9.9	Other fresh fruits; other	2	512	128.2	136.7	.	.	119.4	117.3
0 6.4	Desert grapes	9	2,975
06.4.9	Wine grapes	19	6,120
10	Crop Output	438	141,178	124.0	123.1	123.1	125.4	144.2	162.6
11	Animals	135	43,658	112.6	111.4	112.4	113.1	115.7	113.2
11.1	Cattle	83	26,729	115.1	113.3	113.3	112.3	115.4	112.9
11.2	Pigs	20	6,307	102.7	101.8	107.2	115.2	118.8	115.2
11.4	Sheep	27	8,781	111.4	111.4	113.3	112.7	112.7	112.7
11.5	Poultry	6	1,842	115.3	115.8	112.5	120.2	122.8	113.1
11.9	Other animals	-	0
12	Animal Products	427	137,766	118.7	118.2	118.9	116.5	115.6	115.9
12.1	Milk	405	130,566	117.8	117.3	118.3	116.3	115.8	115.8
12.2	Eggs	17	5,539	139.9	140.1	133.8	120.5	111.0	117.3
12.9	Other animal products	5	1,660	117.5	117.5	117.5	115.6	115.6	115.6
13	Animal Output	562	181,424	117.2	116.6	117.3	115.7	115.6	115.2
14	Total Output	1,000	322,602	120.2	119.4	119.9	119.9	128.1	136.0

Table 15: Monthly Agricultural Output Price Index (Kosovo disposition) Jul-Dec 2013, (2010 = 100)

Item code	Groups	Weight in %	Weight 1000 Euro	2013					
				Jul	Aug	Sep	Oct	Nov	Dec
0 1	Cereals	44	14,173	120.6	108.2	103.4	103.3	105.7	108.9
0 1.1	Wheat	32	10,360	111.6	94.4	94.4	94.4	98.9	102.6
0 1.3	Barley	1	191	149.4	149.4	145.9	149.4	149.4	153.5
0 1.5	Maize	10	3,248	142.9	144.8	126.4	125.7	121.9	123.8
0 1.9	Other cereals	1	375	160.8	153.2	131.3	131.2	132.3	130.7
0 3	Forage plants	18	5,681	130.6	132.4	128.3	129.9	133.7	133.4
0 3.1	Fodder maize	0	45	141.7	143.6	125.3	124.7	124.0	122.8
0 3.9	Other forage plants	17	5,637	130.5	132.4	128.3	130.0	133.8	133.4
0 3.9.1	Hay	10	3,149	141.6	144.1	139.2	141.6	146.6	144.1
0 3.9.2	Straw	4	1,234	109.0	109.0	103.2	101.3	103.2	109.0
0 3.9.9	Other forage plants ;others	4	1,254	123.9	125.8	125.8	128.8	131.7	130.7
0 4	Vegetables	278	89,583	110.9	89.1	98.7	129.8	96.8	108.2
0 4.1	Fresh vegetables	278	89,583	110.9	89.1	98.7	129.8	96.8	108.2
0 4.1.2	Tomatoes	89	28,805	88.6	80.4	102.5	113.3	.	.
0 4.1.9	Other fresh vegetables	188	60,778	130.4	93.2	97.3	135.5	96.8	108.2
0 4.1.9	Pepper	139	44,751	140.6	93.2	96.7	141.6	.	.
0 4.1.9.1	Cabbage	9	2,863	115.1	83.3	92.9	79.4	83.3	83.3
0 4.1.9.4	Cucumbers	13	4,054	81.6	87.9	110.7	142.4	.	.
0 4.1.9.6	Onions	8	2,426	94.1	83.7	86.3	86.3	83.7	81.0
0 4.1.9.7	Beans	7	2,318	141.6	152.7	143.2	155.1	151.1	155.1
0 4.1.9	Water melon	9	2,775	109.7	92.6	89.2	.	.	.
0 4.1.9.9.9	Other fresh vegetable;other	5	1,592	100.5	88.1	93.9	88.8	85.9	88.7
0 5	Potatoes	56	18,225	165.5	153.4	146.1	143.6	141.2	141.2
0 6	Fruits	42	13,515	114.0	101.8	103.5	175.5	181.4	110.8
0 6.1	Fresh fruits	14	4,420	114.0	92.1	93.4	105.0	103.3	110.8
0 6.1.1	Apple	6	1,966	104.4	96.4	120.2	111.4	99.7	102.6
0 6.1.2	Pears	1	453	127.8	103.6	97.5	112.0	98.8	112.0
0 6.1.9	Other fresh fruit	6	2,001	116.4	89.6	73.4	95.7	125.8	150.1
0 6.1.9.2	Plums	4	1,258	115.5	81.3	62.0	92.0	.	.
0 6.1.9.4	Nuts and dried fruit	1	231	160.3	156.4	132.9	121.5	135.0	165.2
06.1.9.9	Other fresh fruits; other	2	512	117.9	141.7	146.7	85.2	87.1	89.9
0 6.4	Desert grapes	9	2,975	.	124.8	109.4	100.6	111.4	.
06.4.9	Wine grapes	19	6,120	.	.	.	209.4	209.4	.
10	Crop Output	438	141,178	120.0	102.3	107.0	133.3	113.0	113.8
11	Animals	135	43,658	113.5	115.6	115.5	116.0	115.2	116.9
11.1	Cattle	83	26,729	113.3	116.7	117.3	116.1	116.8	117.6
11.2	Pigs	20	6,307	115.2	109.0	109.0	112.5	109.9	112.5
11.4	Sheep	27	8,781	112.7	117.8	115.2	117.8	113.3	118.5
11.5	Poultry	6	1,842	113.7	111.9	112.7	118.9	119.2	115.7
11.9	Other animals	-	0
12	Animal Products	427	137,766	112.4	112.6	112.9	112.5	112.5	114.3
12.1	Milk	405	130,566	111.9	111.9	112.4	111.9	111.9	113.4
12.2	Eggs	17	5,539	120.3	125.7	121.6	123.7	124.1	133.3
12.9	Other animal products	5	1,660	121.3	123.3	121.3	121.3	121.3	121.3
13	Animal Output	562	181,424	112.6	113.3	113.5	113.3	113.2	114.9
14	Total Output	1,000	322,602	115.9	108.5	110.6	122.1	113.1	114.4

Table 16 Monthly Agricultural Output Price Index (Kosovo disposition) Jan-Jun 2014, (2010 = 100)

Item code	Groups	Weight in ‰	Weight 1000 Euro	2014					
				Jan	Feb	Mar	Apr	Maj	Jun
0 1	Cereals	44	14,173	117.1	117.6	116.9	111.2	110.6	110.8
0 1.1	Wheat	32	10,360	105.6	105.6	104.8	105.6	104.8	104.1
0 1.3	Barley	1	191	155.3	158.2	158.2	152.4	149.4	152.4
0 1.5	Maize	10	3,248	149.2	150.5	150.5	123.8	123.8	127.0
0 1.9	Other cereals	1	375	135.7	143.8	138.8	135.2	136.1	133.2
0 3	Forage plants	18	5,681	145.7	146.3	145.7	128.2	128.0	124.9
0 3.1	Fodder maize	0	45	154.3	155.5	155.5	122.8	122.8	125.9
0 3.9	Other forage plants	17	5,637	145.6	146.3	145.6	128.2	128.0	124.9
0 3.9.1	Hay	10	3,149	157.7	158.9	157.7	140.4	137.9	134.3
0 3.9.2	Straw	4	1,234	110.9	110.9	110.9	103.2	109.0	107.1
0 3.9.9	Other forage plants ;others	4	1,254	149.4	149.4	149.4	122.3	121.9	119.0
0 4	Vegetables	278	89,583	116.0	123.3	118.5	115.3	119.2	126.4
0 4.1	Fresh vegetables	278	89,583	116.0	123.3	118.5	115.3	119.2	126.4
0 4.1.2	Tomatoes	89	28,805	123.9	128.1
0 4.1.9	Other fresh vegetables	188	60,778	116.0	123.3	118.5	115.3	116.4	125.1
0 4.1.9	Pepper	139	44,751	118.8	136.2
0 4.1.9.1	Cabbage	9	2,863	111.1	134.9	.	.	.	111.1
0 4.1.9.4	Cucumbers	13	4,054	100.3	85.4
0 4.1.9.6	Onions	8	2,426	78.4	81.0	83.7	94.5	101.3	100.7
0 4.1.9.7	Beans	7	2,318	157.5	159.9	163.9	166.3	176.6	169.4
0 4.1.9	Water melon	9	2,775
0 4.1.9.9.9	Other fresh vegetable;other	5	1,592	96.9	97.9	85.1	78.8	88.9	92.4
0 5	Potatoes	56	18,225	121.7	126.6	121.7	121.7	116.9	170.4
0 6	Fruits	42	13,515	130.2	124.4	143.1	147.0	126.1	100.7
0 6.1	Fresh fruits	14	4,420	130.2	124.4	143.1	147.0	126.1	100.7
0 6.1.1	Apple	6	1,966	123.2	123.2
0 6.1.2	Pears	1	453	129.2
0 6.1.9	Other fresh fruit	6	2,001	175.6	142.4	143.1	147.0	126.1	100.7
0 6.1.9.2	Plums	4	1,258
0 6.1.9.4	Nuts and dried fruit	1	231	184.0	145.4	143.1	147.0	151.7	148.6
0 6.1.9.9	Other fresh fruits; other	2	512	128.2	136.3	.	.	124.7	99.2
0 6.4	Desert grapes	9	2,975
06.4.9	Wine grapes	19	6,120
10	Crop Output	438	141,178	119.4	124.2	122.2	119.3	119.1	128.0
11	Animals	135	43,658	116.8	118.2	119.2	116.8	116.0	115.0
11.1	Cattle	83	26,729	117.2	117.7	119.6	117.9	115.3	113.5
11.2	Pigs	20	6,307	116.1	117.9	117.0	115.2	124.1	124.1
11.4	Sheep	27	8,781	115.2	118.5	119.1	114.6	111.4	112.7
11.5	Poultry	6	1,842	121.3	124.4	121.5	117.5	120.8	117.9
11.9	Other animals	-	0
12	Animal Products	427	137,766	116.9	116.9	118.3	115.8	115.8	114.2
12.1	Milk	405	130,566	115.8	115.8	117.3	115.3	115.3	113.9
12.2	Eggs	17	5,539	139.9	139.9	139.9	124.1	124.8	120.7
12.9	Other animal products	5	1,660	125.2	125.2	125.2	121.3	121.3	119.4
13	Animal Output	562	181,424	116.9	117.2	118.5	116.0	115.9	114.4
14	Total Output	1,000	322,602	118.0	120.3	120.1	117.4	117.3	120.4

Table 17: Monthly Agricultural Output Price Index (Kosovo disposition) Jul-Dec 2014, (2010 = 100)

Item code	Groups	Weight in %	Weight 1000 Euro	2014					
				Jul	Aug	Sep	Oct	Nov	Dec
0 1	Cereals	44	14,173	110.0	108.6	109.7	108.6	108.2	108.0
0 1.1	Wheat	32	10,360	103.3	103.3	104.8	104.8	106.3	106.3
0 1.3	Barley	1	191	158.2	149.4	152.4	149.4	152.4	164.1
0 1.5	Maize	10	3,248	126.4	121.9	121.9	116.2	109.2	107.3
0 1.9	Other cereals	1	375	128.0	118.9	117.2	126.8	127.4	131.7
0 3	Forage plants	18	5,681	120.7	119.5	120.9	117.6	123.1	120.2
0 3.1	Fodder maize	0	45	107.7	104.5	104.5	115.2	108.3	109.6
0 3.9	Other forage plants	17	5,637	120.8	119.6	121.0	117.6	123.2	120.3
0 3.9.1	Hay	10	3,149	131.8	129.3	131.8	126.9	134.3	129.3
0 3.9.2	Straw	4	1,234	97.5	97.5	97.5	93.7	99.4	97.5
0 3.9.9	Other forage plants ;others	4	1,254	116.0	117.0	117.0	118.0	119.0	119.9
0 4	Vegetables	278	89,583	115.6	104.8	111.9	132.5	106.0	122.7
0 4.1	Fresh vegetables	278	89,583	115.6	104.8	111.9	132.5	106.0	122.7
0 4.1.2	Tomatoes	89	28,805	112.6	89.7	118.4	143.5	.	.
0 4.1.9	Other fresh vegetables	188	60,778	118.1	112.1	109.5	128.7	106.0	122.7
0 4.1.9	Pepper	139	44,751	125.3	116.7	108.6	130.5	.	.
0 4.1.9.1	Cabbage	9	2,863	112.7	95.2	83.3	107.1	97.6	134.9
0 4.1.9.4	Cucumbers	13	4,054	74.4	91.4	122.1	140.7	.	.
0 4.1.9.6	Onions	8	2,426	83.7	73.2	69.3	78.4	78.4	79.7
0 4.1.9.7	Beans	7	2,318	169.4	165.5	163.1	162.3	155.1	159.1
0 4.1.9	Water melon	9	2,775	109.7	94.7	109.7	.	.	.
0 4.1.9.9.9	Other fresh vegetable;other	5	1,592	111.0	84.8	102.9	89.2	91.4	94.5
0 5	Potatoes	56	18,225	121.7	99.8	99.8	107.1	114.4	114.4
0 6	Fruits	42	13,515	129.5	113.5	124.6	142.0	145.0	108.2
0 6.1	Fresh fruits	14	4,420	129.5	108.8	124.5	115.6	106.8	108.2
0 6.1.1	Apple	6	1,966	116.5	108.4	129.0	105.6	99.7	96.8
0 6.1.2	Pears	1	453	125.1	111.6	118.6	119.9	106.7	112.0
0 6.1.9	Other fresh fruit	6	2,001	134.8	108.7	122.4	125.2	139.3	160.3
0 6.1.9.2	Plums	4	1,258	134.8	107.0	119.8	124.1	.	.
0 6.1.9.4	Nuts and dried fruit	1	231	152.5	152.5	140.7	141.1	148.9	173.0
06.1.9.9	Other fresh fruits; other	2	512	133.9	118.0	137.4	93.9	99.2	109.4
0 6.4	Desert grapes	9	2,975	.	124.8	124.6	122.2	138.5	.
06.4.9	Wine grapes	19	6,120	.	.	.	152.7	152.7	.
10	Crop Output	438	141,178	117.3	106.0	111.7	127.1	111.7	118.7
11	Animals	135	43,658	117.4	116.0	116.2	114.2	114.7	114.6
11.1	Cattle	83	26,729	119.3	118.7	118.1	115.8	116.6	116.7
11.2	Pigs	20	6,307	116.1	112.1	114.3	105.4	105.4	103.6
11.4	Sheep	27	8,781	112.0	110.1	111.4	115.2	115.2	115.2
11.5	Poultry	6	1,842	119.5	119.5	119.6	114.8	117.0	119.1
11.9	Other animals	-	0
12	Animal Products	427	137,766	114.3	114.3	116.6	114.2	113.6	109.8
12.1	Milk	405	130,566	113.9	113.9	116.3	113.4	112.4	108.5
12.2	Eggs	17	5,539	122.4	122.4	122.1	131.9	138.6	137.2
12.9	Other animal products	5	1,660	117.5	117.5	117.5	121.3	121.3	123.3
13	Animal Output	562	181,424	115.0	114.7	116.5	114.2	113.8	111.0
14	Total Output	1,000	322,602	116.0	110.9	114.4	119.9	112.9	114.3

Annual prices Kosovo 2010-2014

Table 18: Annual prices Kosovo 2010-2014

Item code	Description	2010	2011	2012	2013	2014
01.1.	Wheat ¹	0.19	0.25	0.26	0.22	0.20
01.3.	Barley ²	0.24	0.30	0.34	0.37	0.38
01.5.	Maize ³	0.22	0.29	0.30	0.31	0.28
01.2.	Rye ⁴	0.29	0.35	0.35	0.37	0.34
01.4.	Oats ⁵	0.25	0.32	0.33	0.38	0.34
03.9.1	Hay ⁶	0.12	0.13	0.17	0.18	0.16
03.9.2	Straw ⁷	0.07	0.08	0.09	0.09	0.08
03.9.9.	Lucern ⁸	0.15	0.15	0.19	0.19	0.18
05.1.	Potatoes ⁹	0.29	0.30	0.32	0.43	0.34
04.1.9.1	Cabbage ¹⁰	0.18	0.17	0.24	0.17	0.19
04.1.9.6	Onion ¹¹	0.55	0.47	0.41	0.51	0.45
04.1.9	Pepper ¹²	0.59	0.58	0.58	0.78	0.68
04.1.9.3	Spinach ¹³	0.83	0.79	0.84	0.93	0.77
04.1.9.7	Beans ¹⁴	1.80	1.95	2.47	2.63	2.92
04.1.2	Tomatoe ¹⁵	0.56	0.41	0.67	0.55	0.68
04.1.9.4	Cucumber ¹⁶	0.44	0.41	0.45	0.46	0.47
04.1.9	Watermelon ¹⁷	0.21	0.17	0.22	0.19	0.22
04.1.9.9.9	Leek ¹⁸	0.88	0.72	0.67	0.73	0.75
04.1.9.9.9	Garlic ¹⁹	2.90	3.51	2.35	2.11	2.58
05.1.1	Apple ²⁰	0.49	0.49	0.54	0.53	0.55
05.1.2	Pear ²¹	1.08	1.12	1.16	1.19	1.26
05.1.3	Chestnuts ²²	1.05	1.45	1.90	1.66	1.81
05.1.4	Grape ²³	0.80	0.93	0.93	0.85	1.02
05.1.9	Walnuts ²⁴	1.83	2.28	2.61	2.56	2.66
11.1	Cattle ²⁵	2.02	2.13	2.28	2.33	2.36
11.2	Pigs ²⁶	2.15	2.08	2.15	2.38	2.45
11.4	Sheep ²⁷	2.22	2.31	2.43	2.53	2.53
11.5	Chickens (vilages) ²⁸	7.95	8.71	8.88	9.18	9.48
11.5.1	Chickens (farms) ²⁹	1.94	2.12	2.12	2.29	2.33
12.1	Milk ³⁰	0.29	0.31	0.32	0.33	0.33
12.9	Honey ³¹	7.42	8.11	8.52	8.83	9.00
12.2	Eggs ³²	2.13	2.51	2.88	2.69	2.78

1.

- 1 Wheat – is domestic, 2 Barley , 3 Maize – Hybrid 448, 4 Rye, 5 Oats , 6 Hay produced in meadow, 7 Wheat straw (Stubble wheat), 8 Lucerne, 9 potatoes, 10 Cabbage (Hybrid 4 11 Onions- second quality, 12 Pepper- variety Sombork, 13 Spinach- variety Matador, 14 Beans- second quality, 15 Tomatoes- variety Arleta, 16 Cucumber- variety Cornishon, 17 Watermelon– is domestic product, 18 Leek, 19 Garlic, 20 Apple, 21 Pear ,22 Chestnuts, 23 Grape, 24 Walnuts, 25 Live weight per 1kg for bulls and heifers aged 18-22 months domestic pedigree, 26 Live weight per 1kg for pigs aged 10-12 months domestic pedigree, 27 Live weight per 1kg for sheep domestic pedigree (white, mug) aged older than 12 months, 28 Chicken (Village)– domestic (18 weeks old), 29 Chicken (farms)– domestic (18 weeks old) , 30 Milk –price for 1litre cow milk with 3.2% fat, 31 Honey domestic product, 32 Price for 30 pieces of eggs, first class of quality

Figure 2: Annual prices for wheat and maize 2010-2014, Euro /kg

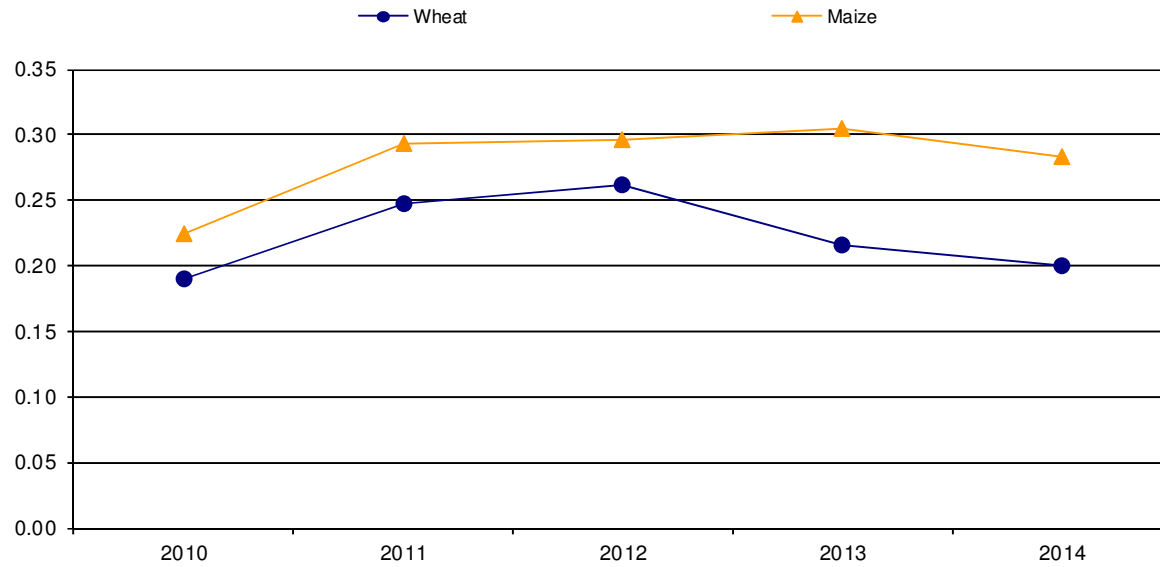


Figure 3: Annual prices for hay, straw and Lucerne 2010-2014, Euro /kg

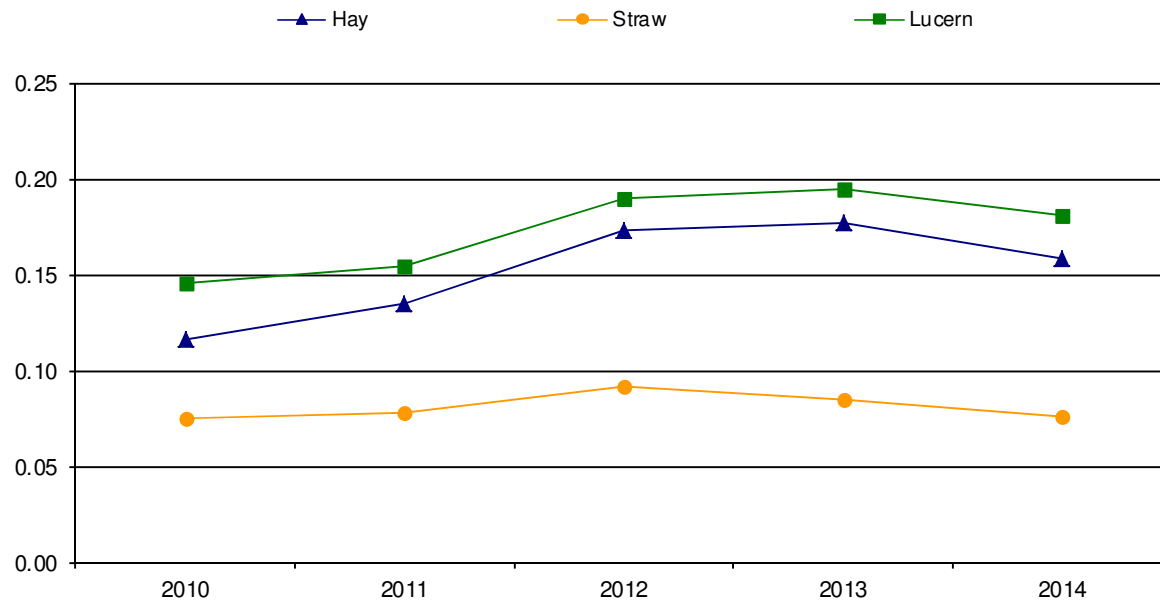


Figure 4: Annual prices for potatoes, tomatoes, pepper and cabbage 2010-2014, Euro /kg

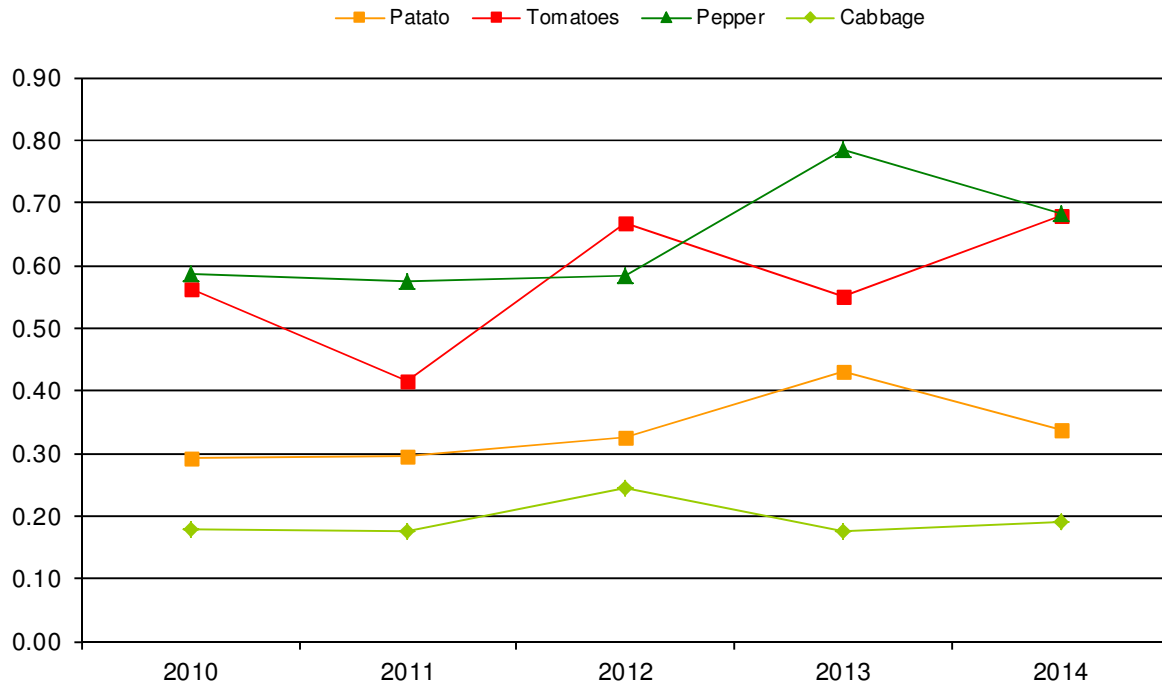
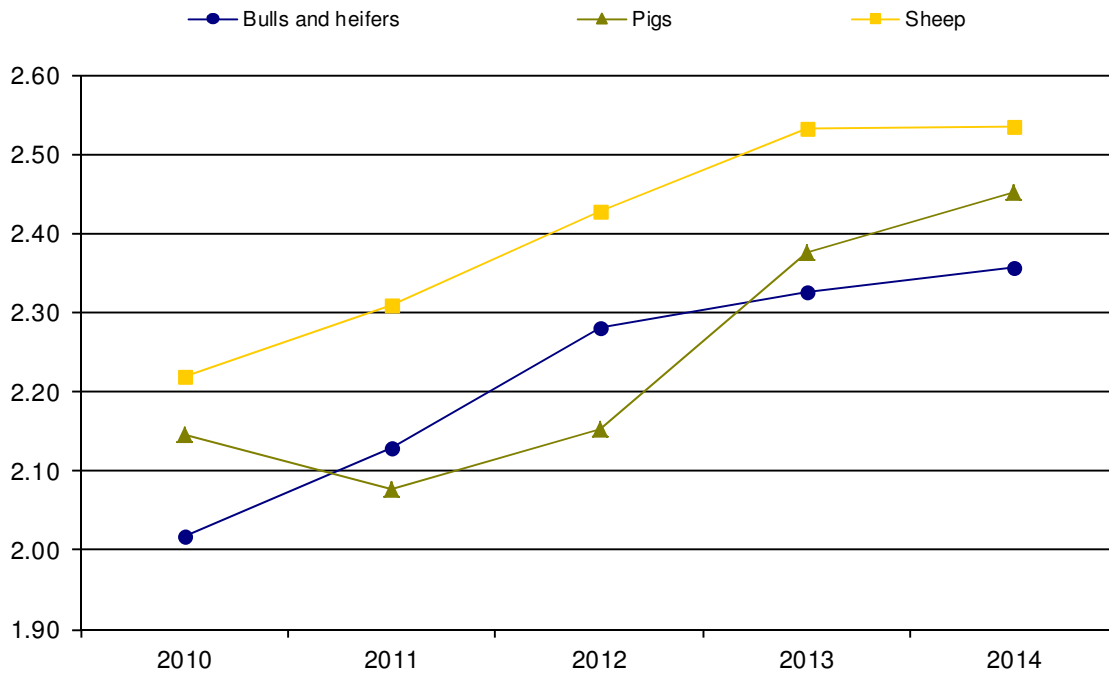


Figure 5: Annual prices for bulls and heifers, pigs and sheep (live weight price) 2010-2014, Euro /kg



Methodology

Prices and Price indices in this publication have been calculated according standards for price statistics in European Union. The project for calculating these Prices and Price Indices was conducted in the frame of the project of “Improving agro monetary statistics” in cooperation with Statistic Sweden and with financial support by Sida (Swedish International Development Cooperation Agency).

Prices have been collected since November 2003 and are collected in seven regions: Pristina, Mitrovica , Peja, Gjakova ,Prizren, Ferizaj and Gjilan,. Prices are collected around the 15th in every month. Since the start the number of different prices that are collected have increased step by step. Therefore some prices are not available for the whole period. Prices are now collected for 64 products and measures prices that farmers receive for the part of their production that are sold. Weights to calculate aggregated indices are mainly based on Agriculture Household Survey 2005, which is the base year in the indices (2005=100). It should be pointed out that the weights, in value or promille, only reflect the part of the agricultural production in Kosovo that are sold outside the agricultural household. For some products the value of the total production can be considerably higher than what is reflected in the weights.

According to EU standards, quarterly and annual indices are supposed to be calculated by each member state. The EU indices in this publication follow the methodology developed in EU. For national needs, also a monthly index is calculated. This index is calculated slightly different from the quarterly index. In short, the monthly index does not use monthly weights on aggregated level (when calculating code 10, 13 and 14). However for most crop groups (code 01, 03, 04 and 06) monthly weights are used within the group to calculate the group aggregates. On the other hand the quarterly index have variable quarterly weights everywhere. For this reason, the monthly and the quarterly indices might have slightly different developments if they are compared. However, the EU annual index and the Kosovo annual index are exactly the same. In both cases, the index is calculated as weighted annual index with monthly respectively quarterly weights.

The total weights, quarterly weights and monthly weights are fix during the base period. They all reflect the situation that was present in 2005. By having fix weights, the index is guaranteed only to measure price movements, which is the purpose of the index.

To compare the EU index presented in this publication with other countries, the Eurostat website is recommended (<http://epp.eurostat.ec.europa.eu/portal/page/portal/eurostat/home>).

Calculation of elementary Price Index

Calculations of elementary indices are in general done by using following formula, with un-weighted arithmetic mean price.

$$R_i^t = \frac{\frac{1}{n} \sum P_{ij}^t}{\frac{1}{n} \sum P_{ij}^o} \cdot 100$$

R_i^t – Elementary index for month t and product i

P – Collected price

i – Product i

- j – Price j recorded for product (in general price for region 1,2,...,n)
- t – Observed month
- 0 – Base month

Calculation of aggregated Price Index

Calculating aggregated index for total Output or subgroups of Output Index is done using following formula.

$$I^t = \sum \left(R_i^t \cdot \frac{w_i^0}{\sum w_i^0} \right)$$

- I^t – Aggregated index for period t
- w_i^0 – Weighting factor in base period for product i
- i – Product i
- t – Observed month
- 0 – Base month

Questionnaire

Target definition

Item number	Item name			Quantity	Unit	
Price Collector				Collection place/ Company		
Date						
Price						

Enumerators notes

- Detailed description of specific variety selected for re-pricing
- Changes in the detailed description, date for changes
- Treatment of quality change when description changed (information of over-lap price observation, alt. valuation of quality change)

Cataloguing in Publication - (CIP)
National Library of Kosovo "Pjetër Bogdani"

631:311(496.51)"2010/2014"

Output Price Index and Prices In Agriculture : 2010-2014
(2010=100) / Publication was prepared by / Bajrush Qevani ...[et al.]. –
Pristina: Kosovo Agency of Statistics, 2015. - 33 f. :ilustr. me ngjyra ;
28 cm. – (Series 2 : Agriculture and Environment Statistics)

Preface / Isa Krasniqi : f. [5]

1.Qevani, Bajrush

ISBN 978-9951-22-186-3

Kosovo Agency of Statistics

short description

Kosovo Agency of Statistics is a professional institution which deals with collection, processing and publication of official statistical data. As such acts since 1948 and has passed through several historical stages, structured according to state regulation of those times.

On 2 August 1999, the Agency has resumed his professional work (after nine years of interruption of all statistical series detrimental to the interest of Kosovo), as an independent institution under the Ministry of Public Administration. Since 12.12.2011 the Agency operates in the frames of the Prime Minister's Office. Office is funded by the Kosovo Consolidated Budget, but also by donors for specific projects and for technical professional support.

Kosovo Agency of Statistics acts according to the Law No. 04/L-036 which entered into force on 12.12.2011. Strategic development plan 2009-2013 is the middle term implementation for the development of statistical system in correlation with the European Union statistics (EUROSTAT).

Kosovo Agency of Statistics has this organizational structure: production departments; (Department of Economic statistics and National Accounts, Department of Population statistics, Department of Agriculture and Environment statistics and Department of Social statistics. **Support Departments;** (Department of Methodology and Information Technology, Department of Administration. **Within the Agency we also established. Regional Offices;** Gjakove, Gjilan, Mitrovica, Peja, Prizren, Pristina and Ferizaj

Number of employees and budget are still limited. Employees are total of 134 workers, of them 96 (71.6%) at the headquarters of the Agency, while in the Regional Offices, 38 (28.4%), with qualifying structure, 65.4% with university education to 34.6% with secondary education.

We have professional and technical cooperation with all ministries of the Government of Kosovo, especially with the Ministry of Economy and Finance, Central Bank of Kosovo, with international institutions, EUROSTAT, International Monetary Fund, World Bank, Sweden's SIDA, DFID, UNFPA, UNDP, UNICEF, and with the statistical institutions of the countries in the region.

Kosovo Agency of Statistics almost completely covers the territory of Kosovo, based on the statistical structure of the enumeration areas as the basic unit and sole in the country from which it gets first hand information. All surveys conducted in the field use the extension of the samples in these enumeration areas but also a statistical methodology according to international recommendations. During the collection of statistical data and reports from reporting entities are involved professionals, technicians, administrators, servants of the country offices, field enumerators from regional offices, etc.

We have successfully implemented the project of Population Census, Households and Dwellings in 2011, Census that was not carried out since 1981. Results obtained from the Census will have an important role in compiling the development policies.

The mission of the Agency; to meet the needs of users with qualitative statistical data, objective, in time and space so that users have reliable base to conduct regular analysis in the interest of planning and project development at the municipal and country level. To support government institutions, scientific institutes, research academies, businesses in order to provide proper information for decision-makers and other users in Kosovo.

- **Address: KOSOVO AGENCY OF STATISTICS**
Street. "Zenel Salihu", No. 4, 10000 Pristina
- **Telephone:** +381 (0) 38 200 31 104
CEO: +381 (0) 38 200 31 132
- **Fax::** +381 (0) 38 235 033
- **E-mail:** agriculturalks-gov.net
- **Website:** <http://ask.rks-gov.net>

ISBN 978-9951-22-186-3



9 789951 221863