



Republika e Kosovës
Republika Kosova-Republic of Kosovo
Qeveria - Vlada - Government
Zyra e Kryeministrit -Ured Premijera -Office of the Prime Minister
Agjencia e Statistikave të Kosovës - Agencija za Statistike Kosova - Kosovo Agency of Statistics

Series 3: Economic Statistics

Statistical Repertoire of Enterprises in Kosovo (Q4 - 2015)



AGJENCIA E STATISTIKAVE TË KOSOVËS
AGENCIJA ZA STATISTIKE KOSOVA
KOSOVO AGENCY OF STATISTICS

Foreword

Kosovo Agency of Statistics (KAS) has prepared publication "**Statistical Repertoire of Enterprises in Kosovo Q4 2015**", on new registered businesses at the Kosovo Business Registration Agency (KBRA) from 01.10.2015 until 31.12.2015 (fourth quarter 2015).

Statistical Business Register (SBR) is part of KAS which includes all businesses that conduct economic activity on the territory of the Republic of Kosovo and as such serves for statistical and demographic analysis of businesses, preparation of samples and the establishment of results at the country level for all surveys conducted by businesses. SBR also serves as the main source of information for the calculation of Gross Domestic Product.

SBR is constructed and continuously updated based on two administrative sources of data (KBRA and Tax Administration of Kosovo), as well as from regular statistical surveys carried out by KAS.

Continued demand for statistical information for businesses is on every day basis from different internal or external users of KAS, therefore based on these requirements we have prepared various tables and graphical data.

We believe that this publication will serve as a useful reference base for all users of KAS statistical data, and will serve as useful and relevant economic information for Kosovo.

Comments, remarks, suggestions and proposals regarding this publication are welcome and they can be sent to e-mail: economic@rks-gov.net

Statistical Repertoire of Enterprises in Kosovo is a regular quarterly publication.

NOTE: From September 1, 2014, the nomenclature of economic activities is in the new version NACE Rev. 2, and some previous published data are converted in this version.

Publication was prepared by:

Ilir T. Berisha – Director of Department
Hysni Elshani - Head of Sector,
Muhamet Kastrati - IT specialist for SBR,
Luljeta Krasniqi –Senior Officer,
Valdete Navakazi – Senior Officer,
Ahmet Cakolli – Officer for Design.

February, 2016

Chief Executive Officer, KAS
Isa Krasniqi

List of Abbreviations

KAS Kosovo Agency of Statistics

SBR Statistical Business Register

KBRA Kosovo Business Registration Agency

TAK Tax Administration of Kosovo

MTI Ministry of Trade and Industry

GDP Gross Domestic Product (GDP)

KPA Kosovo Privatization Agency

EC European Commission

NEA Nomenclature of Economic Activities

NACE Rev. 1 (Nomenclature of Economic Activities EC - 1st version)

NACE Rev.2 (Nomenclature of Economic Activities EC - 2nd Version)

SME Small and Medium Enterprises

Q1 First Quarter

Q2 Second Quarter

Q3 Third Quarter

Q4 Fourth Quarter

SYMBOLS

- No occurrence

: Missing data

Contents

	Page
1 Characteristics of new enterprises in Q4 - 2015.....	5
2 Methodological explanations and definitions.....	6
2.1. Definitions 7	
2.2. Legal form of organization of business	8
3 New and terminated enterprises by quarters	9
4 Enterprises by section of economic activity, legal form of organization and the number of employees	11
The categorization of enterprises by size and gender.....	12
5 Number of new enterprises according to municipality.....	13
6 New individual and non-individual enterprises.....	15
7 New enterprises by section of economic activity and the number of employees....	17
8 New enterprises according to legal form.....	18
9 New enterprises according to origin of capital.....	19
10 Terminated enterprises	20

1 Characteristics of new enterprises in Q4 - 2015

In the fourth quarter of 2015 (Q4 - 2015) were registered a total of 2480 enterprises.

There is a rise of 14% of new enterprises compared with the same quarter of the previous year (Q4 - 2014).

Also a growth of 8.6% of new enterprises is observed if compared with the previous quarter of this year (Q3 - 2015).

Economic activities preferred during this quarter were trade with 746 new enterprises (30.1%), manufacturing with 271 (10.9%), agriculture, forestry and fisheries with 270 (10.9%), activities of other services 189 (8.3%), accommodation and activities of food service with 246 (9.9%), professional, scientific and technical services 175 (7.1%), construction with 163 (6.6%), transport and storage with 131 (5.3%) while the other activities participate in a smaller scale.

Category of number of employees by 1-4 (employees) makes about 2393 enterprises or 96.5% of new enterprises, category with 5-9 with 68 (2.7%), 10-19 with 12 (0.5%), 20-249 with 7 enterprises (0.3%), while in the other category (250+) there is no enterprise registered in this quarter.

Regarding the geographical scope of new enterprises at the municipal level as in every quarter prevails Prishtina with 593 new enterprises (in percentage 23.9%), Peja with 184 (7.4%), Prizren with 177 (7.1%), Ferizaj 160 (6.5%), Gjakova with 131 (5.3%), Gjilan with 119 (4.8%), then Mitrovica with 111 (4.5%), while other municipalities have a smaller number of registered enterprises during the quarter.

2 Methodological explanations and definitions

Statistical Business Register (SBR) serves for statistical purposes and shall clearly identify the units in order:

- To allow receiving information about them via administrative sources.
- To enable the preparation of samples; coordination of surveys and the aggregation/grouping of results;
- To allow analysis of the demographic population of enterprises and units associated with them.
- Provide input data (input) for the calculation of Gross Domestic Product (GDP).

Statistical Business Register (SBR) - **Includes** all legal entities (enterprises) that exercise economic activity within the territory of Kosovo.

Does not include: Public administration, Non-profit Organizations and International Organizations.

Sources for updating the SBR variables are:

- Administrative
 - o Information from the Kosovo Business Registration Agency
 - o Information from the Tax Administration of Kosovo
- Statistical
 - o Enterprise Structure Survey
 - o Survey about Hotel Service
 - o Collection of Production Prices
 - o Collection of Import Prices

Main variables in the SBR are grouped by:

- **Identification of variables**
 - o Number of business registration (NBR), name, legal form, ownership, address, communication (phone, fax, email, etc.)
- **Stratified variables**
 - o Main economic activity, size by employees
- **Demographic variables**
 - o Date of registration, date of termination/closure
- **Updated variables are**
 - o Status of activity (active or non-active)
 - o Economic activity of the enterprise (NACE Rev. 1)
 - o Size by employees
 - o Address, and communication variables (telephone, fax, mobile, e-mail)

2.1. Definitions

Nomenclature of Economic Activities (NACE), is the four-digit level classification of economic activities exerted in different subjects.

This nomenclature is translation and adaptation of the European Classification of Economic Activities (NACE Rev. 2. In English).

Use of this nomenclature is mandatory since September 1, 2014 in all the institutions of the Republic of Kosovo and based on the regulation No.11/2013 adopted by the Government of the Republic of Kosovo.

The structure of economic activities NACE Rev. 2 consists of 21 sections presented below labeled with letters from A to S.

- A. Agriculture, forestry and fishing
- B. Mining and quarry
- C. Manufacturing
- D. Supply of electricity, gas, steam and air conditioning
- E. Water supply, sewerage, waste management and land revitalization activities
- F. Construction
- G. Wholesale and retail trade, repair of motor vehicles, motorcycles
- H. Transport and storage
- I. Accommodation and food service activities
- J. Information and communication
- K. Financial and insurance activities
- L. Real estate activities
- M. Professional, scientific and technical activities
- N. Administrative and support activities
- O. Public administration and defense
- P. Education
- Q. Human health and social work activities
- R. Arts, entertainment and recreation
- S. Other services activities
- T. Activities of households as employers
- U. Activities of organizations and extra-territorial bodies

Classes of economic activities according to the new nomenclature **NACE Rev. 2** are total of 615 of them, which are encoded by four digit code ranging from 0111 to 9900.

2.2. Legal form of organization of business

Definitions applied to legal forms of enterprises under Regulation 2001/16 and Law No. 02/L123 on Trade and Corporation Associations which are applied when registering in the KBRA are as follows:

1. **Individual business** - is the **only natural person** who performs economic activities for the purpose of profit and who is registered in the KBRA. In the individual business the owner has unlimited liability for all debts of the company. The company has an official name or includes the surname of the lawful owner
2. **General partnership** - The general partnership, all partners jointly respond without restriction for partnership debts. A partnership has a label, which may include the name of one or more partners.
3. **Limited partnership** - In limited partnerships, except "unlimited" partners (partners responsible jointly without limitation for the debts of the company) also participate "limited" partners or those responsible for the company's obligations to the limit of the value of their founding contributions/capital.

4.Limited liability enterprises - Limited liability enterprises are those enterprises that are established by one or several founders, who answer only to the limit of the value of their contribution. Limited liability enterprise has a label, which may include the name of one or more partners.

5.Shareholders – Shareholders are those whose capital is divided into shares and shareholders respond only to the limit of the value of their contribution. Shareholder enterprise (a joint stock enterprises) can be established by having one or more shareholders.

6.Foreign company - A foreign company is a business and from the moment of registration is considered a branch in Kosovo that has no identity of legal person. After registration shall enjoy all the rights and obligations established under the applicable law.

7.Social enterprise - Social enterprise means a legal person that most assets and capital are socially owned. These enterprises until the privatization are monitored and registered by the Kosovo Privatization Agency under the Law Commercial Companies No.02/L-123.

8.Public enterprise - Public enterprise is the enterprise which carries out activities of general interest which is established by the state. Public enterprise is monitored by the government and organized as a joint stock company in accordance with applicable law on Commercial Companies. All ownership interests in a public company will be represented by shares and these shares will be registered.

9. Agricultural cooperative - Agricultural cooperative is a business organization created by natural or legal persons who must be farmers who contribute with their private property to the share of capital.

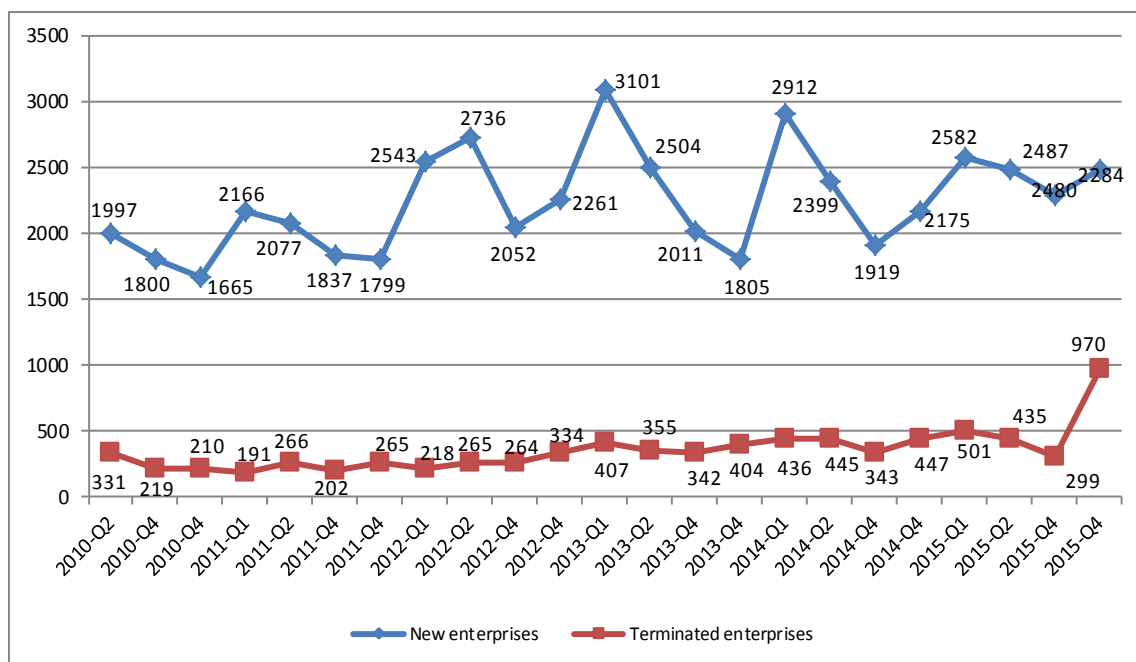
10. Enterprise under the jurisdiction of the KPA - are ex-social owned enterprises which are now managed and supervised by the KPA (Kosovo Privatization Agency).

3 New and terminated enterprises by quarters

Table 1. Number of new enterprises by quarter and section of economic activity.

Period	Section of economic activity																			
	A	B	C	D	E	F	G	H	I	J	K	L	M	N	O	P	Q	R	S	
Quarter	Total	Agriculture, forestry and fishing	Mining and quarrying	Production	Supply of electricity, gas, steam and air conditioning	Water supply, sewerage, waste management and land revitalization activities	Construction	Wholesale and retail trade, repair of motor vehicles, motorcycles	Transport and storage	"Accommodation and food service activities"	Information and communication	Financial and insurance activities	Real estate activities	Professional, scientific and technical activities	Administrative and support activities	Public administration and defense, compulsory social insurance	Education	Human health and social work activities	Art, entertainment and recreation	Other service activities
2012 - Q1	2528	174	9	239	5	18	268	820	175	243	96	4	9	155	57	7	32	39	48	130
2012 - Q2	2736	218	26	278	3	17	259	809	156	300	82	3	10	190	70	6	24	36	36	213
2012 - Q4	2051	127	9	184	7	12	193	598	140	205	84	6	11	131	48	8	32	34	56	166
2012 - Q4	2261	222	11	201	5	12	224	691	139	207	78	3	7	137	78	4	26	20	54	142
2012 Total	9576	741	55	902	20	59	944	2918	610	955	340	16	37	613	253	25	114	129	194	651
2013 - Q1	3100	301	10	299	9	19	337	867	201	264	104	6	135	169	60	9	32	48	54	176
2013 - Q2	2504	142	7	258	2	14	227	759	107	246	101	4	95	162	65	9	28	43	52	183
2013 - Q4	2011	122	7	163	6	11	201	565	108	240	82	8	15	119	53	6	20	48	63	174
2013 - Q4	1805	188	5	152	5	6	178	543	109	161	70	2	12	135	36	9	18	34	62	80
2013 Total	9420	753	29	872	22	50	943	2734	525	911	357	20	257	585	214	33	98	173	231	613
2014 - Q1	2911	205	10	283	4	13	284	887	181	293	121	12	21	180	77	12	33	50	88	157
2014 - Q2	2399	186	9	283	3	16	207	704	99	282	95	8	10	146	61	11	20	39	55	165
2014 - Q4	1919	115	7	196	3	13	146	574	111	237	61	11	7	97	49	2	18	33	60	179
2014 - Q4	2175	168	6	216	14	9	166	649	143	222	80	12	21	147	65	17	19	51	50	120
2014 Total	9404	674	32	978	24	51	803	2814	534	1034	357	43	59	570	252	42	90	173	253	621
2015 - Q1	2582	255	7	276	8	12	237	784	143	253	104	12	15	144	80	6	20	36	57	133
2015 - Q2	2487	212	12	261	5	13	193	751	142	263	98	15	15	139	76	10	29	67	60	126
2015 - Q4	2284	208	8	239	4	8	160	622	108	256	86	43	19	123	66	3	25	49	68	189
2015 - Q4	2480	270	5	271	13	15	163	746	131	246	80	25	25	175	74	6	35	35	58	107
2015 Total	9833	945	32	1047	30	48	753	2903	524	1018	368	95	74	581	296	25	109	187	243	555

Graph 1. The number of new enterprises and those terminated by respective quarters from Q2 2010 to Q4 2015

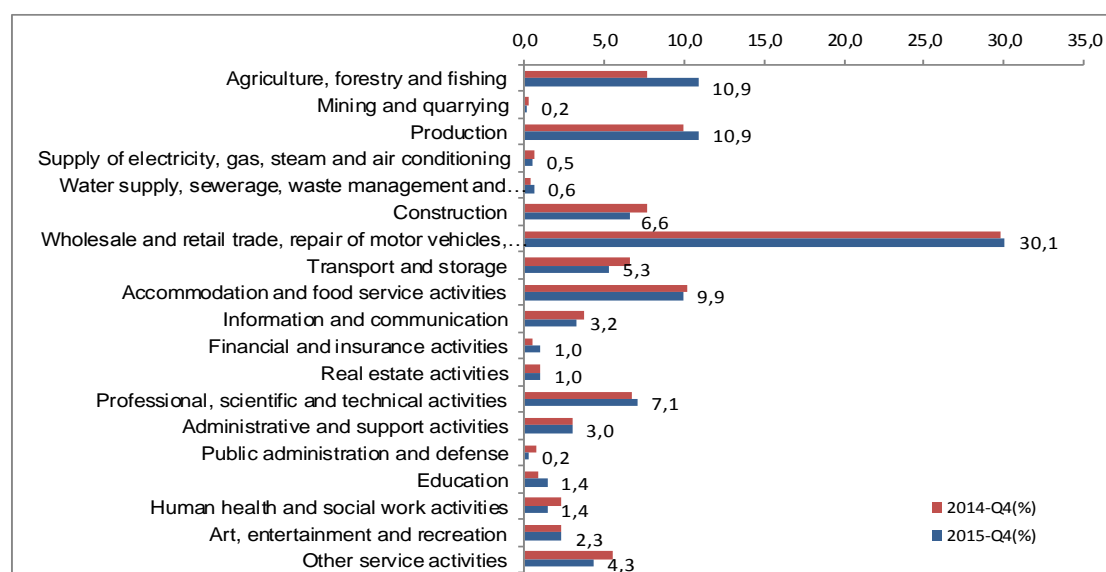


4 Enterprises by section of economic activity, legal form of organization and the number of employees

Table 2. The number of new enterprises by section of economic activity, legal form of organization and the number of employees in Q4 2015

Section of economic activity	Total	Category of number of employees					
		Non-individual			Individual businesses		
		Total	1-4	5 +	Total	1-4	5 +
Total	2480	1708	1684	24	772	709	63
A Agriculture, forestry and fishing	270	222	221	1	48	47	1
B Mining and quarrying	5	1	1		4	2	2
C Production	271	179	176	3	92	77	15
D							
Supply of electricity, gas, steam and air conditioning	13	-	-	-	13	12	1
E Water supply, sewerage, waste management and land revitalization activities	15	6	6		9	7	2
F Construction	163	103	97	6	60	54	6
G Wholesale and retail trade, repair of motor vehicles, motorcycles	746	536	529	7	210	199	11
H Transport and storage	131	109	107	2	22	21	1
I Accommodation and food service activities	246	190	189	1	56	46	10
J Information and communication	80	28	28		52	48	4
K Financial and insurance activities	25	18	16	2	7	5	2
L Real estate activities	25	12	12	-	13	12	1
M Professional, scientific and technical activities	175	86	86	-	89	88	1
N Administrative and support activities	74	30	30	-	44	42	2
O Public administration and defense	6	2	2	-	4	4	
P Education	35	18	17	1	17	15	2
Q Human health and social work activities	35	21	20	1	14	12	2
R Art, entertainment and recreation	58	49	49	-	9	9	-
S Other service activities	107	98	98	-	9	9	-

Graph 2. New enterprises by section of economic activity in Q4 2015



The categorization of enterprises by size and gender

Table 3. The number of SMEs for Q4 2015

Classification	Number of employees	businesses	%
Micro enterprises	1 - 9 employees	2461	99,2
Small enterprises	10 - 49 employees	18	0,7
Medium enterprise	50 - 249 employees	1	0,0
Large enterprises	250 and over employees	-	-
Total		2480	100,0

Graph 3. The structure of enterprises by size for Q4 2015

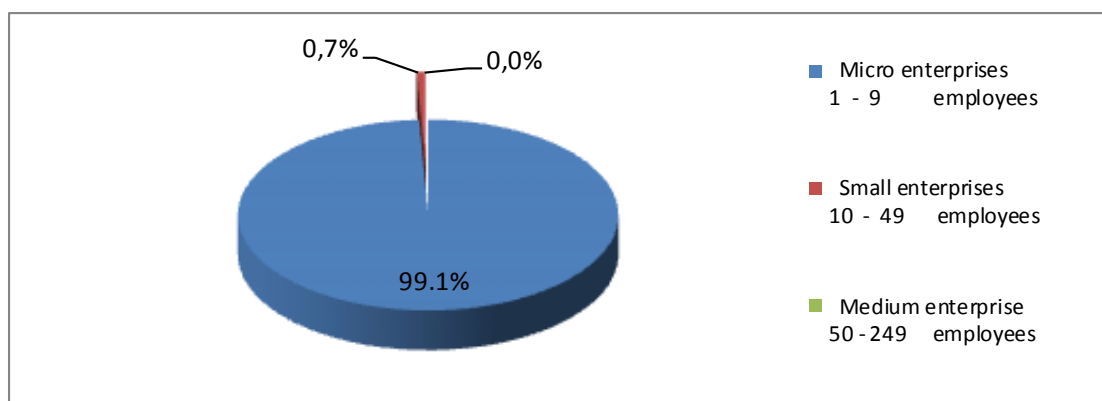
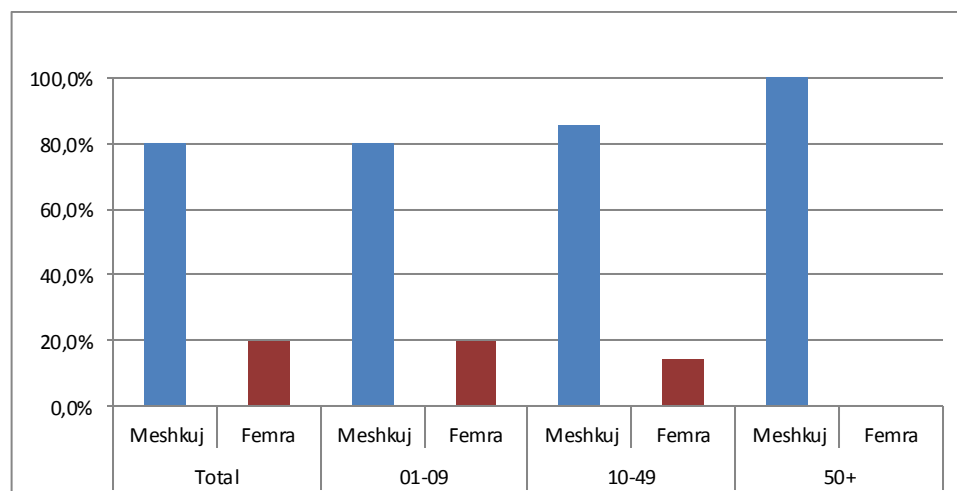


Table 4. The structure of enterprises by gender of owners for 2015

The structure of enterprises by gender							
Total		01-09		10-49		50+	
Male	Female	Male	Female	Male	Female	Male	Female
80,1%	19,9%	80,0%	20,0%	85,5%	14,5%	100,0%	0,0%

Graph 4. Graphic presentation of enterprises according to owners by gender for 2015



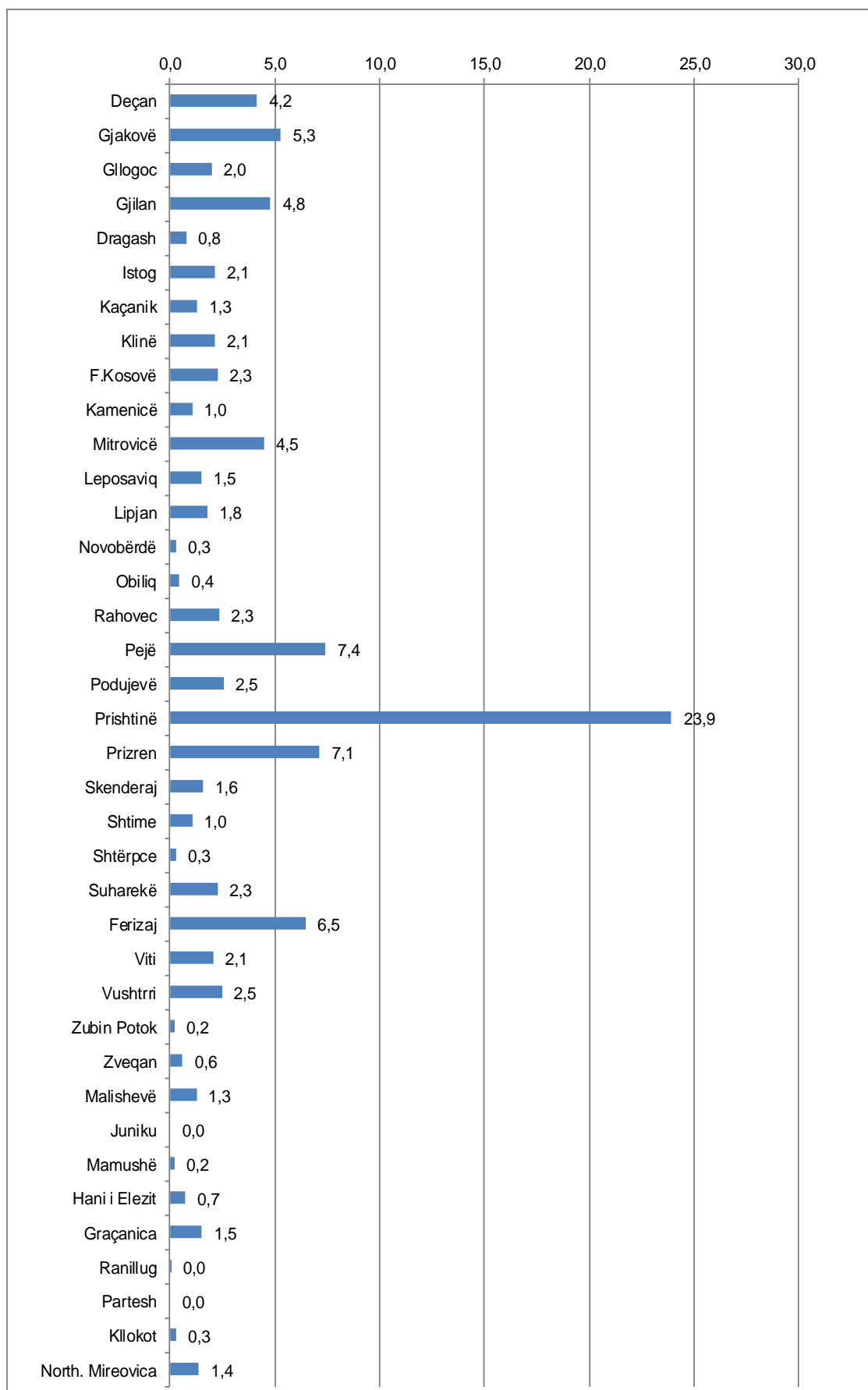
Note: The data in Table 4 and Graph 4 are for the entire 2015.

5 Number of new enterprises according to municipality

Table 5. Number of new enterprises by municipality and section of economic activity in Q4 2015

Municipality	Section of economic activity																			
	A	B	C	D	E	F	G	H	I	J	K	L	M	N	O	P	Q	R	S	
Code and name	2480	270	5	271	13	15	163	746	131	246	80	25	25	175	74	6	35	35	58	107
01 Deçan	103	17	-	13	1	1	11	32	6	7	2	3	-	2	-	1	-	-	-	7
02 Gjakovë	131	6	1	15	1	1	11	43	7	18	2	-	1	6	5	-	1	1	5	7
03 Glllogoc	49	4	-	6	-	-	9	14	1	7	2	-	-	2	-	-	-	-	1	3
04 Gjiilan	119	3	-	12	-	1	9	37	10	15	1	1	1	16	3	-	2	2	3	3
05 Dragash	19	3	-	7	-	-	1	4	-	2	-	1	-	-	1	-	-	-	-	-
06 Istog	53	15	-	6	-	1	5	8	3	4	2	2	-	1	-	-	1	2	-	3
07 Kaçanik	32	2	-	9	-	-	1	7	1	5	2	-	-	1	-	-	-	2	1	1
08 Klinë	53	7	-	7	-	-	6	18	1	8	1	-	-	-	1	-	-	-	1	3
09 F.Kosovë	56	3	-	3	-	-	4	22	6	5	-	1	1	6	3	-	-	-	-	2
10 Kamenicë	26	9	-	2	-	-	2	4	-	4	1	-	-	1	1	-	1	-	1	-
11 Mitrovicë	111	14	-	13	2	1	4	26	21	8	2	-	2	5	3	1	-	2	3	4
12 Lepsaviq	37	15	-	5	-	-	1	4	-	2	1	-	-	1	-	-	1	-	-	7
13 Lipjan	44	4	-	3	-	-	1	17	2	2	1	3	1	2	4	-	-	-	3	1
14 Novobërdë	7	3	-	-	-	-	-	1	-	1	-	-	-	2	-	-	-	-	-	-
15 Obiliq	11	3	-	-	-	1	-	4	2	1	-	-	-	-	-	-	-	-	-	-
16 Rahovec	58	20	1	5	-	-	-	21	2	2	-	-	-	2	1	-	1	-	3	-
17 Pejë	184	23	1	19	-	-	15	57	6	23	5	1	-	4	5	-	4	1	9	11
18 Podujevë	63	6	-	5	-	-	7	29	6	3	2	-	1	1	-	-	-	1	1	1
19 Prishtinë	593	21	2	40	5	2	25	183	14	63	44	9	17	82	29	2	13	9	12	21
20 Prizren	177	8	-	24	2	-	10	60	8	16	4	-	-	15	4	1	3	6	1	15
21 Skenderaj	39	10	-	2	-	1	3	13	5	4	-	-	-	1	-	-	-	-	-	-
22 Shtime	26	3	-	7	-	-	3	4	2	3	-	-	-	1	-	-	1	-	1	1
23 Shtërpce	7	2	-	-	-	-	-	1	1	2	-	-	-	-	1	-	-	-	-	-
24 Suharekë	56	8	-	6	-	2	5	23	3	3	-	-	-	-	2	-	1	1	2	-
25 Ferizaj	160	8	-	29	-	1	9	44	14	18	4	2	-	11	5	1	4	3	4	3
26 Viti	51	11	-	10	-	1	1	16	5	1	1	1	-	1	1	-	-	-	1	1
27 Vushtrri	61	10	-	9	-	-	5	14	2	6	1	1	1	6	1	-	-	1	2	2
28 Zubin Potok	5	2	-	2	-	-	-	1	-	-	-	-	-	-	-	-	-	-	-	-
29 Zveçan	15	6	-	1	-	-	1	3	-	2	1	-	-	-	1	-	-	-	-	-
30 Malishevë	31	4	-	2	-	-	7	9	-	3	-	-	-	4	-	-	1	-	1	-
31 Juniku	-	-	-	-	-	-	-	-	-	-	-	-	-	-	-	-	-	-	-	-
32 Mamushë	5	4	-	-	-	-	-	1	-	-	-	-	-	-	-	-	-	-	-	-
33 Hani i Elezit	18	3	-	-	-	1	2	4	2	2	-	-	-	-	1	-	-	-	1	2
34 Graçanica	38	5	-	4	2	1	3	10	1	4	-	-	-	2	1	-	-	1	1	3
35 Ranillug	1	-	-	-	-	-	-	-	-	-	-	-	-	-	-	-	-	-	-	1
36 Partesh	-	-	-	-	-	-	-	-	-	-	-	-	-	-	-	-	-	-	-	-
37 Klokot	7	6	-	-	-	-	-	-	-	-	-	-	-	-	-	-	1	-	-	-
38 North.Mitrovica	34	2	-	5	-	-	2	12	-	2	1	-	-	-	1	-	-	3	1	5

Graph 5. Structure of new enterprises by municipality in Q4 2015



6 New individual and non-individual enterprises

Table 6. The number of new individual enterprises by municipality and section of economic activity in Q4 2015

Municipality	Section of economic activity																			
	Agriculture, forestry and fishing	Mining and quarrying	Production	Supply of electricity, gas, steam and air conditioning	Water supply, sewerage, waste management and land revitalization activities	Construction	Wholesale and retail trade, repair of motor vehicles, motorcycles	Transport and storage	"Accommodation and food service activities"	Information and communication	Financial and insurance activities	Real estate activities	Professional, scientific and technical activities	Administrative and support activities	Public administration and defense, compulsory social insurance	Education	Human health and social work activities	Art, entertainment and recreation	Other service activities	
Code and name	Total	A	B	C	D	E	F	G	H	I	J	K	L	M	N	O	P	Q	R	S
	1708	222	1	179	-	6	103	536	109	190	28	18	12	86	30	2	18	21	49	98
01 Deçan	98	17	-	11	-	1	11	31	6	7	2	3	-	1	-	1	-	-	-	7
02 Gjakovë	109	5	1	14	-	1	10	37	2	17	-	-	1	5	3	-	1	1	4	7
03 Glogoc	41	3	-	5	-	-	8	11	1	6	1	-	-	2	-	-	-	-	1	3
04 Gjilan	73	1	-	8	-	-	2	25	10	7	1	1	1	10	2	-	-	1	2	2
05 Dragash	15	2	-	6	-	-	1	4	-	1	-	1	-	-	-	-	-	-	-	-
06 Istog	43	14	-	3	-	1	2	7	2	4	2	2	-	-	-	-	1	-	2	3
07 Kaçanik	28	2	-	7	-	-	1	7	1	4	2	-	-	1	-	-	-	1	1	1
08 Klinë	48	5	-	6	-	-	6	18	1	7	1	-	-	-	-	-	-	-	1	3
09 F.Kosovë	29	2	-	-	-	-	1	11	3	3	-	1	1	3	2	-	-	-	-	2
10 Kamenicë	18	8	-	1	-	-	2	2	-	3	1	-	-	-	-	-	-	-	1	-
11 Mitrovicë	86	11	-	8	-	1	3	22	20	8	1	-	1	4	-	-	-	-	3	4
12 Leposaviq	33	14	-	4	-	-	1	4	-	1	1	-	-	1	-	-	-	-	-	7
13 Lipjan	31	3	-	2	-	-	1	13	1	2	1	2	-	1	1	-	-	-	3	1
14 Novobërdë	4	1	-	-	-	-	-	1	-	1	-	-	-	1	-	-	-	-	-	-
15 Obiliq	8	2	-	-	-	1	-	3	2	-	-	-	-	-	-	-	-	-	-	-
16 Rahovec	53	20	-	4	-	-	-	20	2	1	-	-	-	1	1	-	1	-	3	-
17 Pejë	134	15	-	10	-	-	12	43	6	22	-	1	-	3	1	-	1	1	9	10
18 Podujevë	46	4	-	2	-	-	5	23	5	3	2	-	-	1	-	-	-	-	-	1
19 Prishtinë	251	12	-	17	-	-	3	96	9	34	8	4	7	22	9	-	4	3	8	15
20 Prizren	137	7	-	16	-	-	6	49	6	14	2	-	-	10	3	1	2	6	-	15
21 Skenderaj	32	9	-	2	-	-	2	11	5	3	-	-	-	-	-	-	-	-	-	-
22 Shtime	23	3	-	5	-	-	3	3	2	3	-	-	-	1	-	-	1	-	1	1
23 Shtërpce	3	1	-	-	-	-	-	-	1	1	-	-	-	-	-	-	-	-	-	-
24 Suharekë	50	8	-	6	-	1	4	20	2	3	-	-	-	-	2	-	1	1	2	-
25 Ferizaj	107	8	-	18	-	-	6	25	13	16	-	1	-	7	1	-	4	2	4	2
26 Viti	40	9	-	6	-	-	1	14	4	1	1	1	-	1	1	-	-	-	-	1
27 Vushtrri	52	9	-	6	-	-	4	10	2	6	1	1	1	6	1	-	-	1	2	2
28 Zubin Potok	5	2	-	2	-	-	-	1	-	-	-	-	-	-	-	-	-	-	-	-
29 Zveqan	9	5	-	1	-	-	-	-	-	2	-	-	-	-	1	-	-	-	-	-
30 Malishevë	-	-	-	-	-	-	-	-	-	-	-	-	-	-	-	-	-	-	-	-
31 Juniku	26	3	-	2	-	-	5	7	-	3	-	-	-	4	-	-	1	-	1	-
32 Mamushë	5	4	-	-	-	-	-	1	-	-	-	-	-	-	-	-	-	-	-	-
33 Hani i Elezit	14	2	-	-	-	-	1	3	2	2	-	-	-	-	1	-	-	-	1	2
34 Graçanicë	23	4	-	2	-	-	1	7	1	3	-	-	-	1	-	-	-	-	1	3
35 Ranillug	1	-	-	-	-	-	-	-	-	-	-	-	-	-	-	-	-	-	-	1
36 Partesh	-	-	-	-	-	-	-	-	-	-	-	-	-	-	-	-	-	-	-	-
37 Kllokot	6	5	-	-	-	-	-	-	-	-	-	-	-	-	-	-	1	-	-	-
38 Nor.Mitrovica	27	2	-	5	-	-	1	7	-	2	1	-	-	-	1	-	-	2	1	5

Table 7. Number of new non-individual enterprises municipality and section of economic activity in Q4 2015

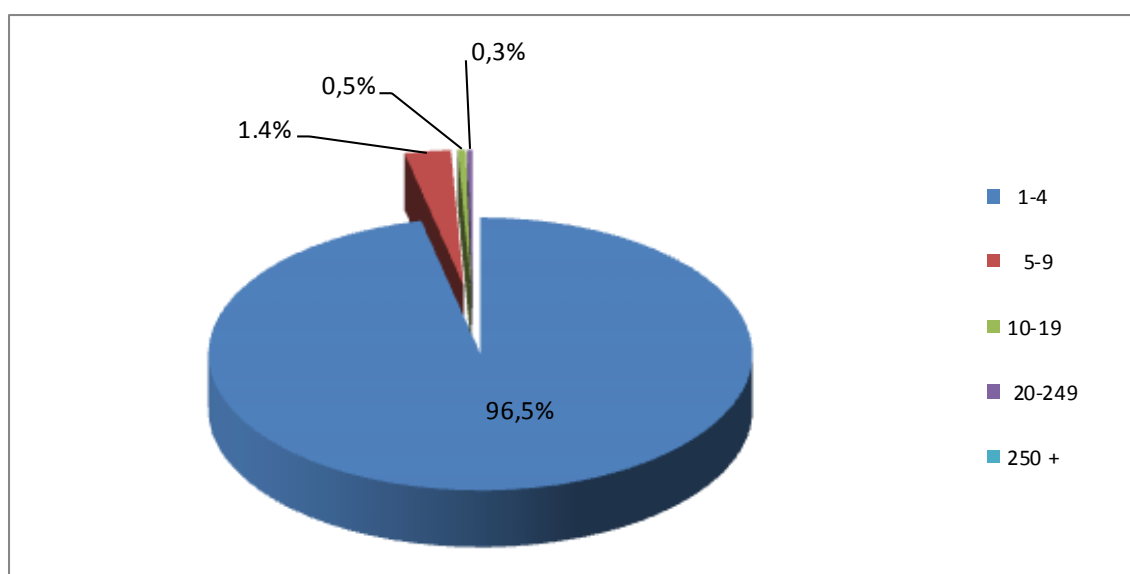
Municipality	Section of economic activity																			
	A	B	C	D	E	F	G	H	I	J	K	L	M	N	O	P	Q	R	S	
Code and name	Total	Agriculture, forestry and fishing	Mining and quarrying	Production	Supply of electricity, gas, steam and air conditioning	Water supply, sewerage, waste management and land revitalization activities	Construction	Wholesale and retail trade, repair of motor vehicles, motorcycles	Transport and storage	"Accommodation and food service activities"	Information and communication	Financial and insurance activities	Real estate activities	Professional, scientific and technical activities	Administrative and support activities	Public administration and defense, compulsory social insurance	Education	Human health and social work activities	Art, entertainment and recreation	Other service activities
	772	48	4	92	13	9	60	210	22	56	52	7	13	89	44	4	17	14	9	9
01 Deçan	5	-	-	2	1	-	-	1	-	-	-	-	-	1	-	-	-	-	-	-
02 Gjakovë	22	1	-	1	1	-	1	6	5	1	2	-	-	1	2	-	-	-	1	-
03 Glogoc	8	1	-	1	-	-	1	3	-	1	1	-	-	-	-	-	-	-	-	-
04 Gjilan	46	2	-	4	-	1	7	12	-	8	-	-	-	6	1	-	2	1	1	1
05 Dragash	4	1	-	1	-	-	-	-	-	1	-	-	-	-	1	-	-	-	-	-
06 Istog	10	1	-	3	-	-	3	1	1	-	-	-	-	1	-	-	-	-	-	-
07 Kaçanik	4	-	-	2	-	-	-	-	-	1	-	-	-	-	-	-	-	1	-	-
08 Klinë	5	2	-	1	-	-	-	-	-	1	-	-	-	-	1	-	-	-	-	-
09 F.Kosovë	27	1	-	3	-	-	3	11	3	2	-	-	-	3	1	-	-	-	-	-
10 Kamenicë	8	1	-	1	-	-	-	2	-	1	-	-	-	1	1	-	1	-	-	-
11 Mitrovicë	25	3	-	5	2	-	1	4	1	-	1	-	1	1	3	1	-	2	-	-
12 Leposaviq	4	1	-	1	-	-	-	-	-	1	-	-	-	-	-	-	1	-	-	-
13 Lipjan	13	1	-	1	-	-	-	4	1	-	-	1	1	1	3	-	-	-	-	-
14 Novobërdë	3	2	-	-	-	-	-	-	-	-	-	-	-	1	-	-	-	-	-	-
15 Obiliq	3	1	-	-	-	-	-	1	-	1	-	-	-	-	-	-	-	-	-	-
16 Rahovec	5	-	1	1	-	-	-	1	-	1	-	-	-	1	-	-	-	-	-	-
17 Pejë	50	8	1	9	-	-	3	14	-	1	5	-	-	1	4	-	3	-	-	1
18 Podujevë	17	2	-	3	-	-	2	6	1	-	-	-	1	-	-	-	-	1	1	-
19 Prishtinë	342	9	2	23	5	2	22	87	5	29	36	5	10	60	20	2	9	6	4	6
20 Prizren	40	1	-	8	2	-	4	11	2	2	2	-	-	5	1	-	1	-	1	-
21 Skenderaj	7	1	-	-	-	1	1	2	-	1	-	-	-	1	-	-	-	-	-	-
22 Shtime	3	-	-	2	-	-	-	1	-	-	-	-	-	-	-	-	-	-	-	-
23 Shtërpce	4	1	-	-	-	-	-	1	-	1	-	-	-	-	1	-	-	-	-	-
24 Suharekë	6	-	-	-	-	1	1	3	1	-	-	-	-	-	-	-	-	-	-	-
25 Ferizaj	53	-	-	11	-	1	3	19	1	2	4	1	-	4	4	1	-	1	-	1
26 Viti	11	2	-	4	-	1	-	2	1	-	-	-	-	-	-	-	-	-	1	-
27 Vushtrri	9	1	-	3	-	-	1	4	-	-	-	-	-	-	-	-	-	-	-	-
28 Zubin Potok	-	-	-	-	-	-	-	-	-	-	-	-	-	-	-	-	-	-	-	-
29 Zveçan	6	1	-	-	-	-	1	3	-	-	1	-	-	-	-	-	-	-	-	-
30 Malishevë	5	1	-	-	-	-	2	2	-	-	-	-	-	-	-	-	-	-	-	-
31 Juniku	-	-	-	-	-	-	-	-	-	-	-	-	-	-	-	-	-	-	-	-
32 Mamushë	-	-	-	-	-	-	-	-	-	-	-	-	-	-	-	-	-	-	-	-
33 Hani i Elezit	4	1	-	-	-	1	1	1	-	-	-	-	-	-	-	-	-	-	-	-
34 Graçanicë	15	1	-	2	2	1	2	3	-	1	-	-	-	1	1	-	-	1	-	-
35 Ranillug	-	-	-	-	-	-	-	-	-	-	-	-	-	-	-	-	-	-	-	-
36 Partesh	-	-	-	-	-	-	-	-	-	-	-	-	-	-	-	-	-	-	-	-
37 Kllokot	1	1	-	-	-	-	-	-	-	-	-	-	-	-	-	-	-	-	-	-
38 Nor.Mitrovica	7	-	-	-	-	-	1	5	-	-	-	-	-	-	-	-	-	1	-	-

7 New enterprises by section of economic activity and the number of employees

Table 8. The number of new enterprises by sector of economic activity and the number of employees in Q4 2015

Setion of economic activity	Total	Category of number of employees				
		1-4	5-9	10-19	20-249	250 +
Total	2480	2393	68	12	7	-
<i>A</i> Agriculture, forestry and fishing	270	268	2	-	-	-
<i>B</i> Mining and quarrying	5	3	1	1	-	-
<i>C</i> Production	271	253	15	-	3	-
<i>D</i> Supply of electricity, gas, steam and air conditioning	13	12	1	-	-	-
<i>E</i> Water supply, sewerage, waste management and land revitalization activities	15	13	1	1	-	-
<i>F</i> Construction	163	151	7	3	2	-
<i>G</i> Wholesale and retail trade, repair of motor vehicles, motorcycles	746	728	14	2	2	-
<i>H</i> Transport and storage	131	128	2	1	-	-
<i>I</i> Accommodation and food service activities	246	235	9	2	-	-
<i>J</i> Information and communication	80	76	4	-	-	-
<i>K</i> Financial and insurance activities	25	21	3	1	-	-
<i>L</i> Real estate activities	25	24	1	-	-	-
<i>M</i> Professional, scientific and technical activities	175	174	1	-	-	-
<i>N</i> Administrative and support activities	74	72	1	1	-	-
<i>O</i> Public administration and defense	6	6	-	-	-	-
<i>P</i> Education	35	32	3	-	-	-
<i>Q</i> Human health and social work activities	35	32	3	-	-	-
<i>R</i> Art, entertainment and recreation	58	58	-	-	-	-
<i>S</i> Other service activities	107	107	-	-	-	-

Graph 6. Structure of new enterprises by category of number of employees in Q4 2015

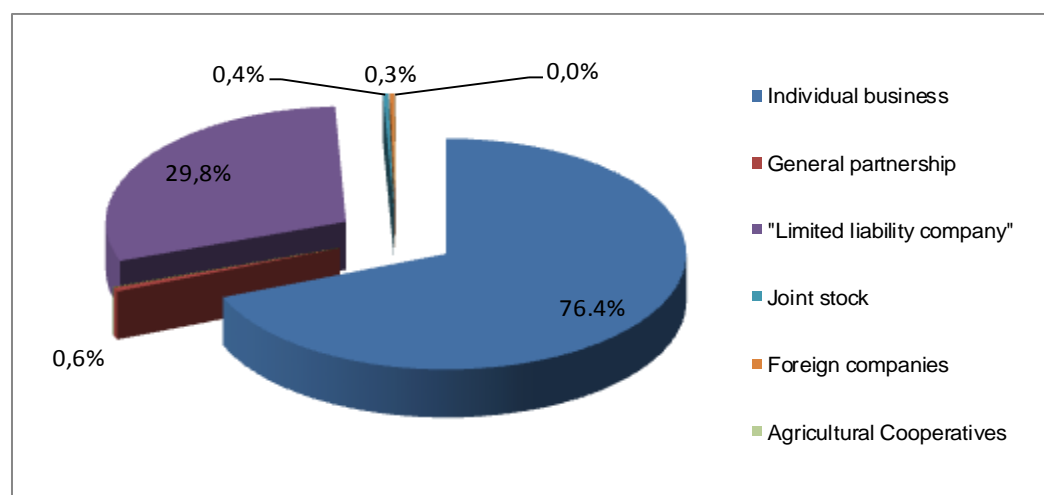


8 New enterprises according to legal form

Table 9. The number of new enterprises by sector of economic activity and legal form of organization in Q4 2015

Section of economic activity	Legal form of organization										
	Total	Individual business	General partnership	Limited partnership	"Limited liability company"	Joint stock	Foreign companies	Social enterprise	Public enterprise	Agricultural Cooperatives	Other enterprises under the jurisdiction of
Total	2480	1708	14	1	739	9	8	-	-	1	-
A Agriculture, forestry and fishing	270	222	1	-	46	-	-	-	-	1	-
B Mining and quarrying	5	1	-	-	3	-	1	-	-	-	-
C Production	271	179	-	-	89	1	2	-	-	-	-
D Supply of electricity, gas, steam and air conditioning	13	-	-	-	13	-	-	-	-	-	-
E Water supply, sewerage, waste management and land revitalization activities	15	6	1	-	8	-	-	-	-	-	-
F Construction	163	103	-	-	57	1	2	-	-	-	-
G Wholesale and retail trade, repair of motor vehicles, motorcycles	746	536	3	-	207	-	-	-	-	-	-
H Transport and storage	131	109	1	-	20	1	-	-	-	-	-
I Accommodation and food service activities	246	190	-	1	54	1	-	-	-	-	-
J Information and communication	80	28	-	-	50	1	1	-	-	-	-
K Financial and insurance activities	25	18	-	-	7	-	-	-	-	-	-
L Real estate activities	25	12	-	-	10	3	-	-	-	-	-
M Professional, scientific and technical activities	175	86	-	-	88	1	-	-	-	-	-
N Administrative and support activities	74	30	3	-	40	-	1	-	-	-	-
O Public administration and defense	6	2	1	-	3	-	-	-	-	-	-
P Education	35	18	1	-	16	-	-	-	-	-	-
Q Human health and social work activities	35	21	1	-	13	-	-	-	-	-	-
R Art, entertainment and recreation	58	49	1	-	8	-	-	-	-	-	-
S Other service activities	107	98	1	-	7	-	1	-	-	-	-

Graph 7. New enterprises by legal form of organization in Q4 2015

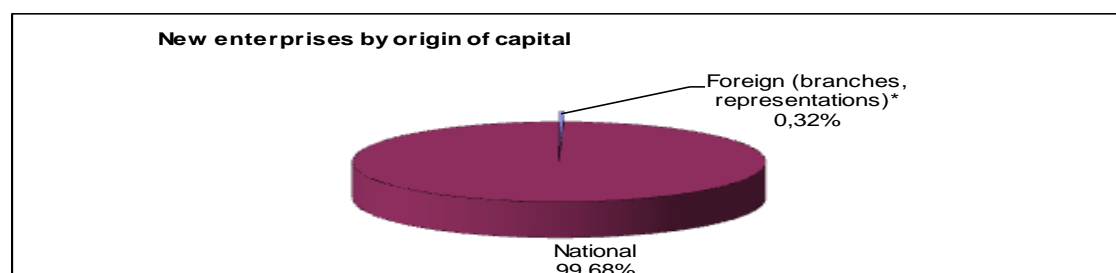


9 New enterprises according to origin of capital

Table 10. Number of new enterprises according to origin of capital Q4 2015

Category of number of employees	Origin of capital					
	Total		Foreign (branches, representations)		National	
	2480	100%	12	100,0%	2472	100%
1-4	2393	96,5%	5	41,7%	2388	96,6%
5-9	68	2,7%	3	25,0%	65	2,6%
10-19	12	0,5%	-	-	12	0,5%
20-249	7	0,3%	-	-	7	0,3%
250+	-	-	-	-	-	-

Graph 8. Structure of new enterprises according to origin of capital in Q4 2015

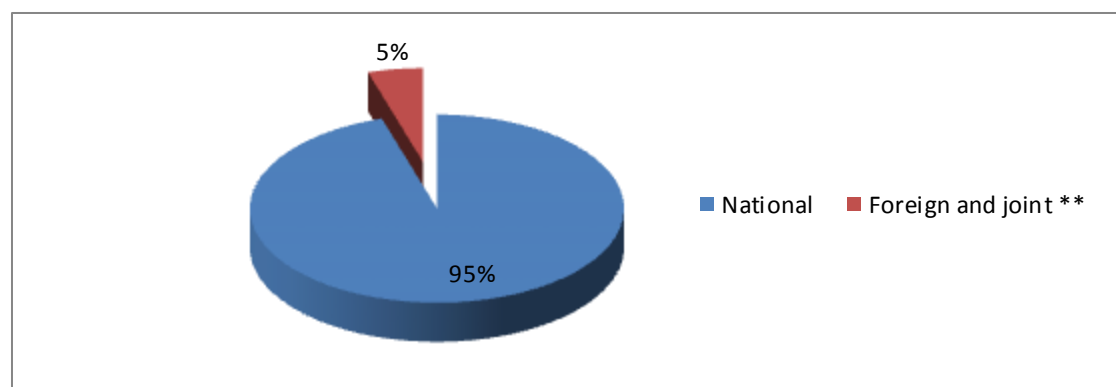


*Note: ** The indicates that we are dealing only with foreign enterprises defined in page 8 (foreign companies, ABRK), and data are for Q4 2015 as in previous publications.*

Table 11. Number of new enterprises by ownership in 2015

Period	Total	National	Të huaja e të përbashkëta **		
			Total	Joint (National + Foreign)	Foreign (Branches, representations*)
2015	9.833	9.365	468	420	48

Graph 9. Structure of new enterprises by ownership in 2015



*Note: **The Table 11 and Graph 9 shows that we are dealing with a broader concept of the definition of the origin of capital or ownership (new enterprises with foreign owned and joint venture).*

10 Terminated enterprises

Table 12. The number of terminated enterprises according to municipality and section of economic activity in Q4 2015

Municipality	Section of economic activity																			
	Agriculture, forestry and fishing	Mining and quarrying	Production	Supply of electricity, gas, steam and air conditioning	Water supply, sewerage, waste management and land revitalization	Construction	Wholesale and retail trade, repair of motor vehicles, motorcycles	Transport and storage	"Accommodation and food service activities"	Information and communication	Financial and insurance activities	Real estate activities	Professional, scientific and technical activities	Administrative and support activities	Public administration and defense, compulsory social insurance	Education	Human health and social work activities	Art, entertainment and recreation	Other service activities	
Code and name	Total	A	B	C	D	E	F	G	H	I	J	K	L	M	N	O	P	Q	R	S
	970	74	2	71	-	2	89	340	129	117	21	2	1	21	16	4	10	8	12	51
01 Deçan	23	3	-	1	-	-	3	9	2	3	-	-	-	1	1	-	-	-	-	-
02 Gjakovë	81	7	-	6	-	-	6	27	3	13	5	1	-	2	1	-	1	-	3	6
03 Glogoc	53	2	1	2	-	-	7	19	11	5	1	-	-	1	1	-	-	-	1	2
04 Gjilan	36	2	-	-	-	-	3	12	3	8	2	-	-	-	-	-	-	2	1	3
05 Dragash	15	1	-	2	-	-	-	3	3	5	1	-	-	-	-	-	-	-	-	-
06 Istog	17	-	-	4	-	-	2	6	2	-	-	-	-	-	-	-	1	-	-	2
07 Kaçanik	20	2	-	1	-	-	3	8	2	2	-	-	-	1	-	-	-	1	-	-
08 Klinë	22	3	-	1	-	-	1	6	3	5	-	-	-	-	-	-	2	-	1	-
09 F.Kosovë	24	1	-	1	-	-	2	7	6	4	-	-	-	-	-	-	-	1	-	2
10 Kamenicë	11	2	-	-	-	-	-	5	2	2	-	-	-	-	-	-	-	-	-	-
11 Mitrovicë	50	3	-	4	-	1	3	13	15	6	1	-	-	1	-	-	-	-	-	3
12 Leposaviq	6	5	-	-	-	-	-	-	-	-	-	-	-	-	1	-	-	-	-	-
13 Lipjan	17	-	-	-	-	-	4	6	3	2	1	-	-	-	-	-	1	-	-	-
14 Novobërdë	1	1	-	-	-	-	-	-	-	-	-	-	-	-	-	-	-	-	-	-
15 Obiliq	3	-	-	1	-	-	-	2	-	-	-	-	-	-	-	-	-	-	-	-
16 Rahovec	16	3	-	1	-	-	2	5	-	3	1	-	-	1	-	-	-	-	-	-
17 Pejë	42	6	-	3	-	-	3	9	7	6	-	-	-	2	-	-	1	-	-	5
18 Podujevë	37	2	-	2	-	-	3	12	6	5	1	-	-	-	1	-	-	-	1	4
19 Prishtinë	95	-	1	5	-	-	8	44	6	10	3	-	1	4	2	3	2	1	1	4
20 Prizren	108	2	-	11	-	-	9	45	5	16	3	-	-	4	2	-	1	1	1	8
21 Skenderaj	66	9	-	1	-	-	10	22	11	6	-	-	-	3	-	1	1	-	-	2
22 Shtime	17	2	-	2	-	-	2	5	-	3	1	-	-	1	-	-	-	-	-	1
23 Shtërpce	3	1	-	-	-	-	-	2	-	-	-	-	-	-	-	-	-	-	-	-
24 Suharekë	38	2	-	6	-	-	5	14	4	3	-	1	-	1	-	-	-	-	-	2
25 Ferizaj	65	4	-	4	-	1	2	19	17	7	-	-	-	1	3	-	-	1	2	4
26 Viti	19	3	-	-	-	-	3	6	4	1	-	-	-	1	-	-	-	-	-	1
27 Vushtrri	33	6	-	5	-	-	1	11	7	1	-	-	-	1	-	-	-	-	-	1
28 Zubin Potok	1	1	-	-	-	-	-	-	-	-	-	-	-	-	-	-	-	-	-	-
29 Zveqan	4	-	-	1	-	-	1	2	-	-	-	-	-	-	-	-	-	-	-	-
30 Malishevë	27	1	-	2	-	-	4	13	4	-	1	-	-	-	-	-	-	-	1	1
31 Juniku	2	-	-	-	-	-	1	-	1	-	-	-	-	-	-	-	-	-	-	-
32 Mamushë	1	-	-	1	-	-	-	-	-	-	-	-	-	-	-	-	-	-	-	-
33 Hani i Elezit	8	-	-	-	-	-	1	4	2	1	-	-	-	-	-	-	-	-	-	-
34 Graçanica	3	-	-	-	-	-	-	2	-	-	-	-	-	1	-	-	-	-	-	-
35 Ranillug	3	-	-	2	-	-	-	1	-	-	-	-	-	-	-	-	-	-	-	-
36 Partesh	-	-	-	-	-	-	-	-	-	-	-	-	-	-	-	-	-	-	-	-
37 Kllokot	-	-	-	-	-	-	-	-	-	-	-	-	-	-	-	-	-	-	-	-
38 Nor.Mitrovica	3	-	-	2	-	-	-	1	-	-	-	-	-	-	-	-	-	-	-	-

Kosovo Agency of Statistics

short description

Kosovo Agency of Statistics is a professional institution which deals with collection, processing and publication of official statistical data. As such acts since 1948 and has passed through several historical stages, structured according to state regulation of those times.

On 2 August 1999, the Agency has resumed his professional work (after nine years of interruption of all statistical series detrimental to the interest of Kosovo), as an independent institution under the Ministry of Public Administration. Since 12.12.2011 the Agency operates in the frames of the Prime Minister's Office. Office is funded by the Kosovo Consolidated Budget, but also by donors for specific projects and for technical professional support.

Kosovo Agency of Statistics acts according to the Law No. 04/L-036 which entered into force on 12.12.2011. Strategic development plan 2009-2013 is the middle term implementation for the development of statistical system in correlation with the European Union statistics (EUROSTAT).

Kosovo Agency of Statistics has this organizational structure: production departments; (Department of Economic statistics and National Accounts, Department of Agriculture and Environment statistics and Department of Social statistics. **Support Departments;** Department of Methodology and Information Technology, Department of Policy Planning, Coordination and Communication, Department of Census and survey and Department of Administration. **Within the Agency we also established Regional Offices;** Gjakove, Gjilan, Mitrovica, Peja, Prizren, Pristina and Ferizaj

In ASK are employed in total 139 workers, of them 104 (74,8 %) at the headquarters of the Agency, while in the Regional Offices, 35 (25,2%), with qualifying structure, 70,5% with university education to 29,5% with secondary education.

We have professional and technical cooperation with all Ministries of the Government of Kosovo, especially with the Ministry of Economy and Finance, Central Bank of Kosovo, with international institutions, EUROSTAT, International Monetary Fund, World Bank, Sweden's SIDA, DFID, UNFPA, UNDP, UNVEF, and with the statistical institutions of the countries in the region.

Kosovo Agency of Statistics almost completely covers the territory of Kosovo, based on the statistical structure of the enumeration areas as the basic unit and sole in the country from which it gets first hand information. All surveys conducted in the field use the extension of the samples in these enumeration areas but also a statistical methodology according to international recommendations. During the collection of statistical data and reports from reporting entities are involved professionals, technicians, administrators, servants of the country offices, field enumerators from regional offices, etc.

We have successfully implemented the project of Population Census, Households and Dwellings in 2011, Census that was not carried out since 1981. Results obtained from the Census will have an important role in compiling the development policies.

The mission of the Agency; to meet the needs of users with qualitative statistical data, objective, in time and space so that users have reliable base to conduct regular analysis in the interest of planning and project development at the municipal and country level. To support government institutions, scientific institutes, research academies, businesses in order to provide proper information for decision-makers and other users in Kosovo

Address: KOSOVO AGENCY OF STATISTICS

Street. "Zenel Salihu", No. 4, 10000 Pristina

- **Telephone:** +381 (0) 38 200 31 129
CEO: +381 (0) 38 200 31 112
- **Fax::** +381 (0) 38 235 033
- **E-mail:** economic@rks-gov.net
- **Ueb-page:** <http://ask.rks-gov.net>