

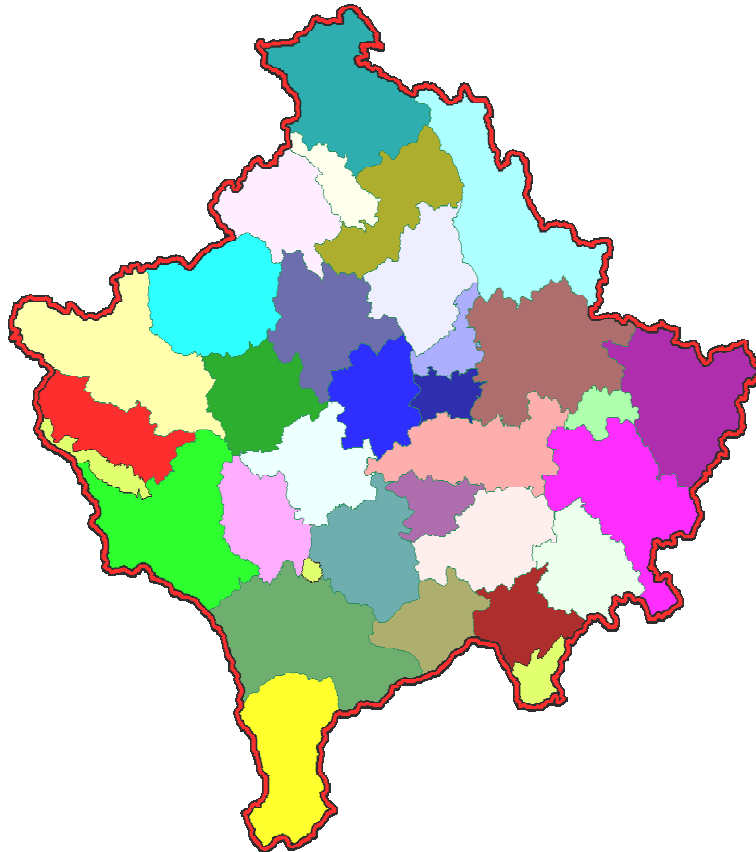


Republika e Kosovës
Republika Kosova-Republic of Kosovo
Qeveria - Vlada - Government

Ministria e Administratës Publike - Ministarstvo Jave Uprave - Ministry of Public Administration

Series 2: Agriculture and Environment Statistics

Economic Accounts for Agriculture 2005-2008



ENTI I STATISTIKËS SË KOSOVËS
ZAVOD ZA STATISTIKU KOSOVA
STATISTICAL OFFICE OF KOSOVA



Republika e Kosovës
Republika Kosova-Republic of Kosovo
Qeveria - Vlada - Government

Ministria e Administratës Publike - Ministarstvo Jave Uprave - Ministry of Public Administration

Series 2: Agriculture and Environment Statistics

Economic Accounts for Agriculture 2005-2008



ENTI I STATISTIKËS SË KOSOVËS
ZAVOD ZA STATISTIKU KOSOVA
STATISTICAL OFFICE OF KOSOVA

Publisher: Statistical Office of Kosovo (SOK)
Publication date: July 2011
© Statistical Office of Kosovo
Reproduction is authorized when source is indicated only
Printed by the K.G.T, Pristina, Kosovo

More information is available on Internet
www.ks-gov.net/esk

P r e f a c e

Economic Accounts for Agriculture (EAA)

The institution responsible for the compilation of the Economic Accounts for Agriculture (EAA) is *Enti i Statistikes se Kosoves (Statistical Office of Kosovo)*, respectively Agriculture and Environment Statistics Department. Statistical Office of Kosovo has prepared data for EAA for the period 2005 – 2008 for the first time.

The main data sources for compilation of EAA are two surveys carried out at the Statistical Office of Kosovo: Agriculture Household Survey (AHS) and Agricultural Price Statistics (APS). Other data sources are Veterinary Services, and administrative data from the Ministry of Agriculture. If there are no data sources for certain items, experts' opinions have been used.

The EAA compilation has started in 2010 and EAA has been compiled for the period 2005-2008. Data are compiled according to the methodology laid down by Eurostat: Manual on Economic Accounts for Agriculture and Forestry EAA/EAF 97 (Rev.1.1) and Commission Regulation (EC) No. 306/2005. Economic Accounts for Agriculture (EAA) is a satellite account of the European System of Integrated Economic Accounts (ESA). It has been published by the Statistical Office of the European Communities (Eurostat) since 1964. Although the basic concepts and accounting rules are identical with those laid down in the ESA, the special characteristics and requirements of agriculture are also taken into consideration in the EAA. The Economic Accounts for Agriculture (EAA) are based on Regulation (EC) No 138/2004 of The European Parliament and the Council of 5 December 2003 on the Economic Accounts for Agriculture in the Community.

SOK is grateful to the Swedish International Development Cooperation Agency (SIDA) for the support in building up the agro monetary statistics system. SOK is especially grateful to Swedish EAA and price statistics experts Miss. Ann-Marie Karlsson, Mr. Tomas Eriksson, Mr. Daniel Persson, Mr. Jimmie Enhall and Statistics Sweden Long-term consultant Mrs. Milva Ekonomi and others who directly or indirectly assisted in the finalisation of this publication.

Suggestions, proposals and remarks for this publication are welcome and can be sent to: E-mail: agriculture@ks-gov.net

This publication was prepared by following personnel:

Bajrush Qevani – Director of department,
Edona Rexhepaj – Statistical Officer, EAA

July, 2011

Acting Chief Executive of SOK,
Isa Krasniqi

Abbreviations and Acronyms

SOK	Statistical Office of Kosovo
EAA	Economic Accounts for Agriculture
EU	European Union
SIDA	Swedish International Development Cooperation Agency
AHS	Agriculture Household Survey
APS	Agricultural Price Statistics

C o n t e n t s

	Page
Economic Accounts for Agriculture	5
Economic Accounts for Agriculture at producer prices 2005 – 2008	13
Intermediate consumption at producer prices	14
Economic Accounts for Agriculture at current prices 2005 – 2008	15
Intermediate consumption at current prices	19
Economic Accounts for Agriculture at constant prices 2005 – 2008	21
Intermediate consumption at constant prices	25
Methodology	27

Economic Accounts for Agriculture

Figure 1 shows the yearly output of EAA 2005 – 2008, for Crop and Animal Output as well as Agricultural Goods Output (EAA at current prices).

In 2008 the EAA for Crop Output has increased by 11.1 % compared with 2007. Animal Output in 2008 has increased by 2.2 % compared with 2007. Agricultural Output has increased by 7.0 % in 2008 compared with 2007.

Crop output has decreased between 2005 and 2006. The decrease can be explained by a decrease in the volumes of crop products produced. The increase between 2006 and 2007 is explained by a raise in prices for important crops. The price indices for wheat for example has increased by 83 % in 2007 compared with 2008. The prices for animal output increased during the period while the quantity produced decreased slightly.

Figure 1: Crop Output, Animal Output and Agricultural Goods Output, for the years 2005 – 2008, in million Euros

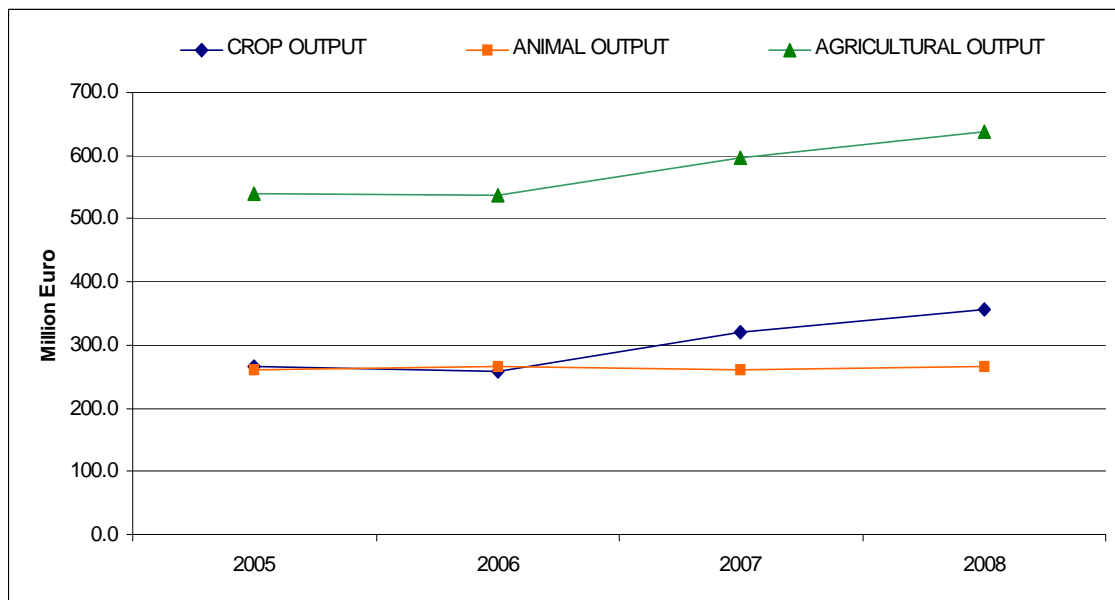


Figure 2 shows the distribution of the output of different crops as an average of the years 2005 - 2008. The category of Crops include: Cereals, Industrial crops, Forage plants, Vegetables and horticultural products, Potatoes and Fruits.

Vegetables and horticultural products is the most important category and constitute about 40.5% of the total Crop Output, followed by Cereals with about 23.2%.

Forage plants, which also include plants produced and consumed at the same holding, constitute 21 % of the total Crop Output, Potatoes 8.1% and Fruits about 7.2 %.

Figure 2: Average of categories for Crops for the years 2005 - 2008, (percent)

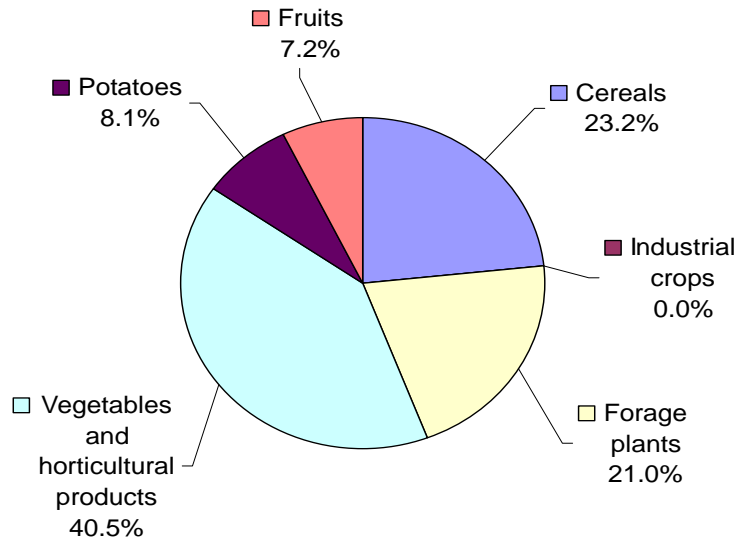
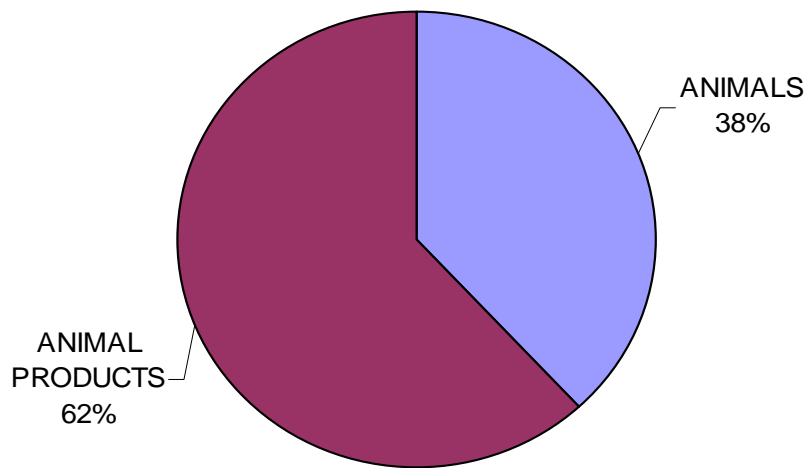


Figure 3 shows that the average of animal products for the years 2005-2008 constitute 62% of the total animal output. In the category Animal products is included: Milk, Eggs and Honey. Milk is the most important animal product; it contributed with 160 million out of 175 million euro of total Animal products in 2008.

Figure 3: Average of animal output for the years 2005 - 2008, (percent)



The category of Animals mainly includes sales of meat from Cattle, Pigs, Sheep, Goats, Poultry and other animals. Figure 4 shows the average of the contribution by different kinds of animals for the years 2005-2008. It shows that the sales of meat are the most important from Cattle, followed by Sheep and Goats.

Figure 4: Average of categories for animals for the years 2005 – 2008, (percent)

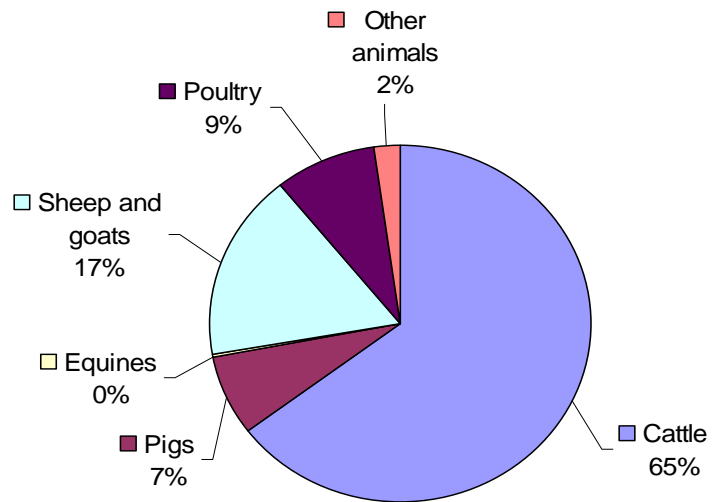


Figure 5 shows the total intermediate consumption for the years 2005 - 2008. The total intermediate consumption has been estimated about 234 million Euro in 2008. That is an increase by 17.6 percent in 2008 compared with 2007.

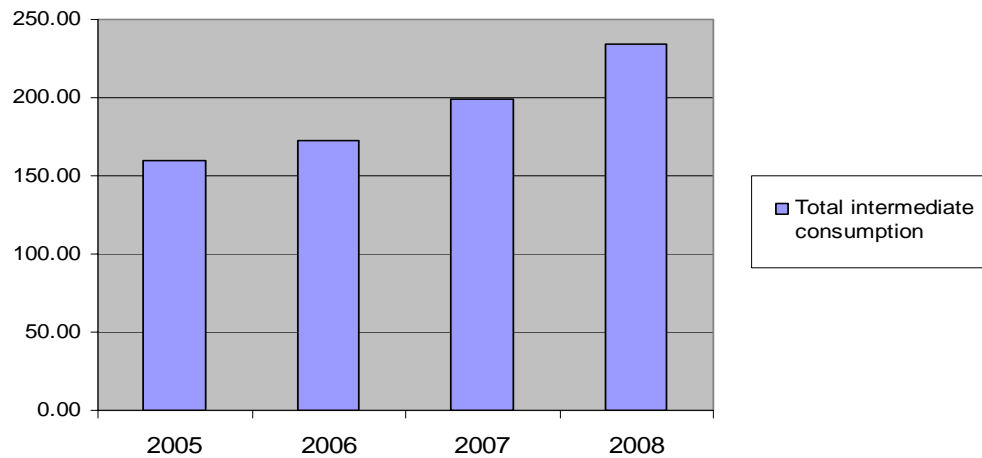
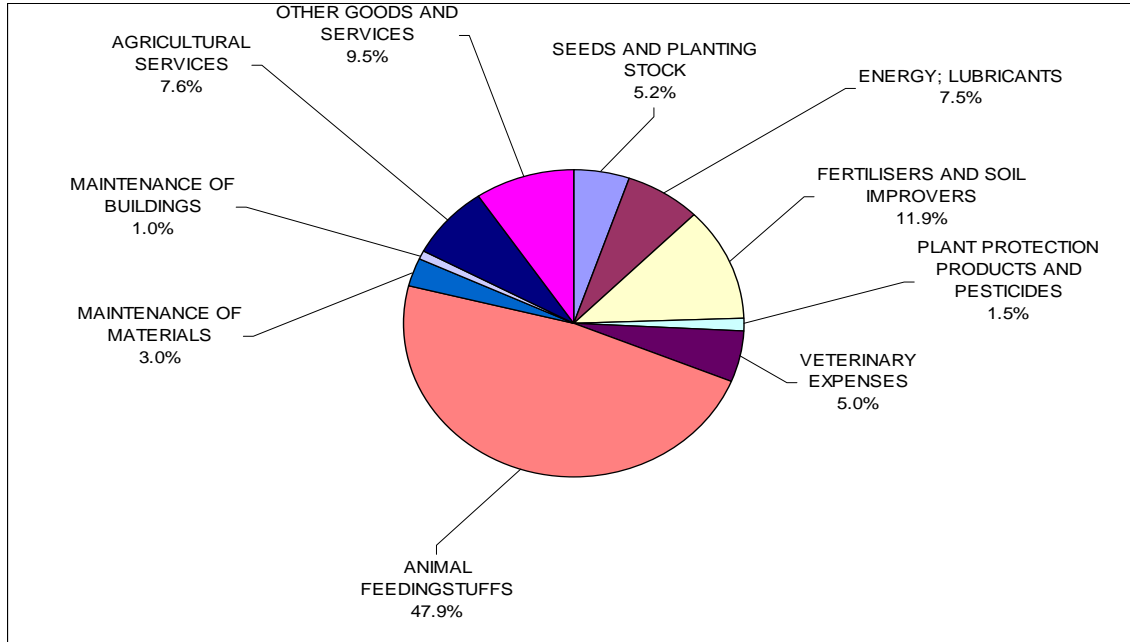
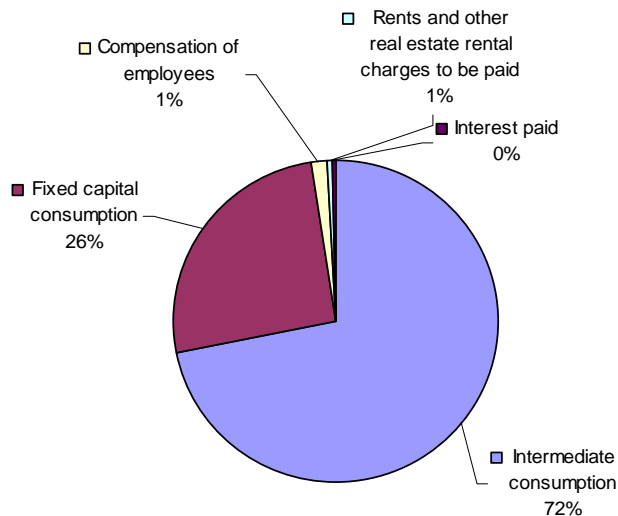
Figure 5: Total intermediate consumption for the years 2005-2008, in million Euro

Figure 6 shows the average intermediate consumption for the years 2005-2008, divided into different categories. Feedingstuff constitutes about half of the intermediate consumption. Feedingstuff includes feedingstuff that the farmer has bought from other farmers or compound feedingstuff and feedingstuff that the farmer has produced on the farm. Energy costs constitutes 7.5 % and fertilizers constitutes about 12 % of the intermediate consumption while veterinary expenses and agricultural services i.e. contract work, constitutes 5 and 7.5 % respectively.

Figure 6: The average of Intermediate consumption for the years 2005-2008, (percent)



The chart below shows the average of different costs in agriculture, for the years 2005-2008. The most important category is Intermediate consumption, which contributes about 72 %, followed by fixed capital consumption, 26 %.

Figure 7: Average of input in agriculture for the years 2005-2008, (percent)

Gross value added is defined as the difference between total output from the agricultural industry and intermediate consumption. In 2008 gross value added amounted to 398 million euro. Between 2007 and 2008 gross value added increased slightly by 2 per cent. The increase in 2007 is explained by a raise in prices for important crops that lead to an increase in crop output.

Net value added is defined as the total output from the agricultural industry less the expenses of intermediate consumption and fixed capital consumption. The net value added amounted to 324 million euro in 2008. That is a slight increase by 0.3 per cent since 2007. Entrepreneurial income is defined as the sum of net value and subsidies on production added less compensation for employees, taxes on production, rents and interests on loans. The entrepreneurial income decreased slightly by 0.1 % in 2008 compared with 2007.

Figure 8: Income aggregate for the agriculture, 2005-2008, in milion Euros

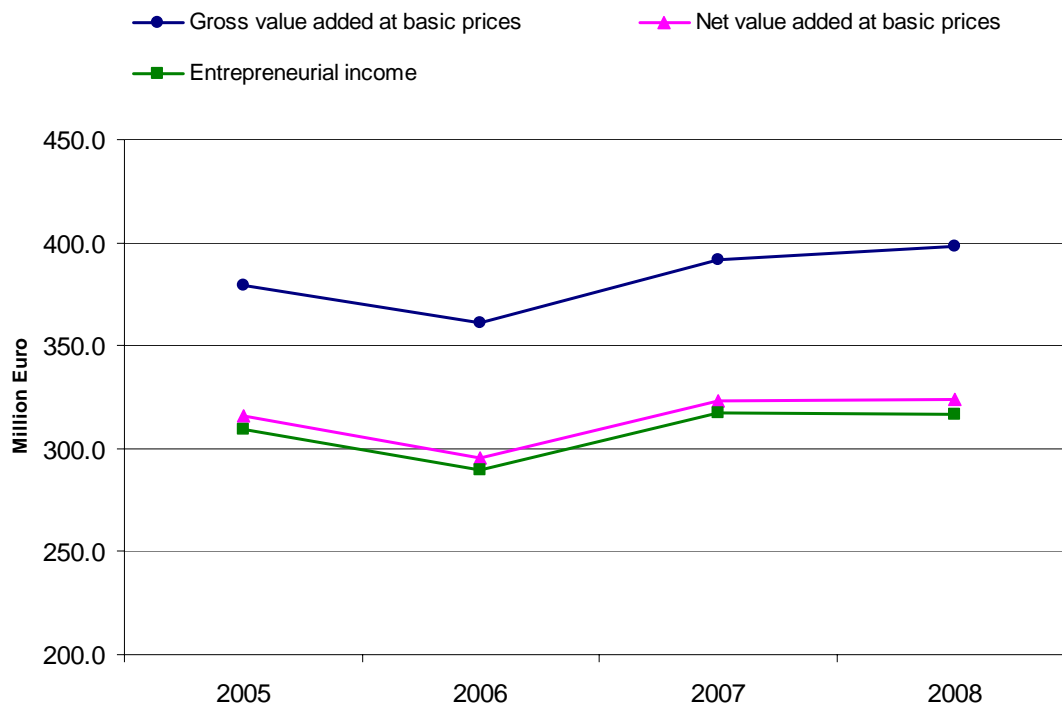


Table 1: Economic Accounts for Agriculture at producer prices, in million Euros

Code New Cronos	Economic Accounts for Agriculture	2005	2006	2007	2008
01000	CEREALS (including seeds)	56.8	55.8	77.0	90.3
01100	Wheat and spelt	36.1	36.6	57.1	62.3
01110	Soft wheat and spelt	36.1	36.6	57.1	62.3
01200	Rye and meslin	0.2	0.1	0.5	0.4
01300	Barley	2.1	1.1	1.1	2.0
01400	Oats and summer cereal mixtures	1.6	1.3	2.6	2.5
01500	Grain maize	16.7	16.7	15.8	23.0
02000	INDUSTRIAL CROPS	0.06	0.04	0.00	0.00
02100	Oil seeds and oleaginous fruits (including seeds)	0.05	0.03	0.00	0.00
02120	Sunflower	0.00	0.00	0.00	0.00
02130	Soya	0.04	0.03	0.00	0.00
02300	Raw tobacco	0.01	0.02	0.00	0.00
03000	FORAGE PLANTS	51.8	48.6	72.6	79.2
03100	Fodder maize	4.2	1.8	2.6	5.2
03900	Other forage plants	47.6	46.8	70.1	74.0
04000	VEGETABLES AND HORTICULTURAL PRODUCTS	118.7	110.4	126.3	132.0
04100	Fresh vegetables	118.7	110.4	126.3	132.0
04110	Cauliflower	0.2	0.1	0.7	0.1
04120	Tomatoes	34.9	21.3	33.3	37.0
04190	Other fresh vegetables	83.7	89.1	92.3	95.0
05000	POTATOES (including seeds)	20.2	22.2	26.8	28.8
06000	FRUITS	19.6	20.8	18.9	26.9
06100	Fresh fruit	15.7	15.3	14.0	18.2
06110	Dessert apples	3.1	4.2	3.4	6.3
06120	Dessert pears	1.9	1.9	1.9	2.8
06130	Peaches	0.14	0.07	0.22	0.20
06190	Other fresh fruit	10.5	9.2	8.6	8.9
06400	Grapes	3.9	5.4	4.8	8.7
06410	Dessert grapes	2.7	3.5	3.0	7.5
06490	Other grapes	1.2	1.9	1.8	1.2
10000	CROP OUTPUT (01 TO 09)	267.1	257.9	321.6	357.1
11000	ANIMALS	110.5	103.2	96.7	90.2
11100	Cattle	68.2	68.5	67.0	56.5
11200	Pigs	7.3	12.3	3.8	6.2
11300	Equines	-0.04	0.25	-0.30	-0.63
11400	Sheep and goats	17.7	12.1	19.3	19.1
11500	Poultry	13.3	7.3	5.5	8.5
11900	Other animals	4.1	2.8	1.5	0.6
12000	ANIMAL PRODUCTS	149.3	162.3	163.0	175.2
12100	Milk	135.0	148.8	150.0	160.8
12200	Eggs	14.2	13.5	13.0	14.4
12900	Other animal products	0.06	0.06	0.06	0.06
12910	Raw wool	0.06	0.06	0.06	0.06
13000	ANIMAL OUTPUT (11+12)	259.8	265.5	259.7	265.4
14000	AGRICULTURAL GOODS OUTPUT (10+13)	526.8	523.4	581.3	622.6
15000	AGRICULTURAL SERVICES OUTPUT	13.6	15.1	14.3	14.9
15100	AGRICULTURAL SERVICES	13.6	15.1	14.3	14.9
16000	AGRICULTURAL OUTPUT (14+15)	540.4	538.5	595.5	637.5
18000	OUTPUT OF THE AGRICULTURAL 'INDUSTRY' (16+17)	540.4	538.5	595.5	637.5

Table 1: Economic Accounts for Agriculture at producer prices, in million Euros, contin.

Code New Cronos	Economic Accounts for Agriculture	2005	2006	2007	2008
19000	TOTAL INTERMEDIATE CONSUMPTION	159.5	172.1	199.0	234.0
19010	SEEDS AND PLANTING STOCK	8.0	9.4	11.3	10.8
19011	- supplied by other agricultural holdings	0.4	0.5	0.6	0.5
19012	- purchased from outside the agricultural 'industry'	7.6	8.9	10.7	10.3
19020	ENERGY; LUBRICANTS	13.6	14.2	13.4	15.8
19021	- electricity	2.1	1.5	1.5	1.1
19023	- other fuels and propellants	11.5	12.7	11.8	14.7
19030	FERTILISERS AND SOIL IMPROVERS	17.7	19.2	20.1	33.7
19031	- fertilisers supplied by other agricultural holdings	0.3	0.5	0.7	1.1
19032	- fertilisers purchased from outside the agricultural 'industry'	17.4	18.7	19.4	32.6
19040	PLANT PROTECTION PRODUCTS AND PESTICIDES	2.4	2.8	2.8	3.4
19050	VETERINARY EXPENSES	6.6	9.2	11.2	11.3
19060	ANIMAL FEEDINGSTUFFS	75.1	76.2	99.7	115.6
19062	- feedingstuffs purchased from outside the agricultural 'industry'	9.6	13.3	12.3	14.0
19063	- feedingstuffs produced and consumed by the same holding	65.5	62.9	87.4	101.6
19070	MAINTENANCE OF MATERIALS	5.4	6.6	5.6	5.2
19080	MAINTENANCE OF BUILDINGS	1.6	2.7	2.1	1.0
19090	AGRICULTURAL SERVICES	13.6	15.1	14.3	14.9
19900	OTHER GOODS AND SERVICES	15.5	16.5	18.6	22.3
20000	GROSS VALUE ADDED AT BASIC PRICES (18-19)	379.1	361.1	391.5	398.0
21000	FIXED CAPITAL CONSUMPTION	63.0	65.3	68.7	74.2
21100	EQUIPMENT	41.0	44.0	44.0	48.4
21200	BUILDINGS	21.1	20.4	23.8	24.6
21300	PLANTATIONS	0.4	0.4	0.4	0.5
21900	OTHERS	0.5	0.5	0.6	0.6
22000	NET VALUE ADDED AT BASIC PRICES (20-21)	316.1	295.8	322.8	323.8
23000	COMPENSATION OF EMPLOYEES	4.5	3.7	3.5	4.0
26000	FACTOR INCOME (22-24+25)	316.1	295.8	322.8	323.8
27000	OPERATING SURPLUS / MIXED INCOME (22-23-24+25)	311.6	292.1	319.3	319.8
28000	RENTS AND OTHER REAL ESTATE RENTAL CHARGES TO BE PAID	1.7	1.9	1.4	2.2
29000	INTEREST PAID	0.4	0.4	0.8	0.9
31000	ENTREPRENEURIAL INCOME (27-28-29+30)	309.4	289.8	317.1	316.8
32000	GFCF IN AGRICULTURAL PRODUCTS	23.8	25.6	-8.0	9.2
32100	GFCF IN PLANTATIONS	0.5	0.5	0.5	0.7
32200	GFCF IN ANIMALS	23.3	25.1	-8.4	8.5
33000	GFCF IN NON-AGRICULTURAL PRODUCTS	74.9	92.0	92.0	96.2
33100	GFCF IN MATERIALS	50.4	68.3	64.3	67.7
33200	GFCF IN BUILDINGS	23.7	23.0	26.7	27.7
33900	OTHER GFCF	0.8	0.8	0.9	0.9
34000	GROSS FIXED CAPITAL FORMATION (32+33)	98.7	117.7	84.0	105.4
35000	NET FIXED CAPITAL FORMATION (34-21)	35.6	52.4	15.3	31.2
36000	CHANGES IN STOCKS	21.8	4.9	-18.5	7.0

Table 2: Economic Accounts for Agriculture at current prices, in million Euros

Item	Code New Cronos	Economic Accounts for Agriculture	2005	2006	2007	2008
01	01000	CEREALS (including seeds)				
		- value at producer prices	56.8	55.8	77.0	90.3
		- subsidies on product	0.0	0.0	0.0	0.0
		- taxes on product	0.0	0.0	0.0	0.0
		- value at basic prices	56.8	55.8	77.0	90.3
01.1	01100	Wheat and spelt				
		- value at producer prices	36.1	36.6	57.1	62.3
		- subsidies on product	0.0	0.0	0.0	0.0
		- taxes on product	0.0	0.0	0.0	0.0
		- value at basic prices	36.1	36.6	57.1	62.3
01.1/1	01110	Soft wheat and spelt				
		- value at producer prices	36.1	36.6	57.1	62.3
		- subsidies on product	0.0	0.0	0.0	0.0
		- taxes on product	0.0	0.0	0.0	0.0
		- value at basic prices	36.1	36.6	57.1	62.3
01.2	01200	Rye and meslin				
		- value at producer prices	0.2	0.1	0.5	0.4
		- subsidies on product	0.0	0.0	0.0	0.0
		- taxes on product	0.0	0.0	0.0	0.0
		- value at basic prices	0.2	0.1	0.5	0.4
01.3	01300	Barley				
		- value at producer prices	2.1	1.1	1.1	2.0
		- subsidies on product	0.0	0.0	0.0	0.0
		- taxes on product	0.0	0.0	0.0	0.0
		- value at basic prices	2.1	1.1	1.1	2.0
01.4	01400	Oats and summer cereal mixtures				
		- value at producer prices	1.6	1.3	2.6	2.5
		- subsidies on product	0.0	0.0	0.0	0.0
		- taxes on product	0.0	0.0	0.0	0.0
		- value at basic prices	1.6	1.3	2.6	2.5
01.5	01500	Grain maize				
		- value at producer prices	16.7	16.7	15.8	23.0
		- subsidies on product	0.0	0.0	0.0	0.0
		- taxes on product	0.0	0.0	0.0	0.0
		- value at basic prices	16.7	16.7	15.8	23.0
02	02000	INDUSTRIAL CROPS				
		- value at producer prices	0.06	0.04	0.00	0.00
		- subsidies on product	0.00	0.00	0.00	0.00
		- taxes on product	0.00	0.00	0.00	0.00
		- value at basic prices	0.06	0.04	0.00	0.00
02.1	02100	Oil seeds and oleaginous fruits (including seeds)				
		- value at producer prices	0.05	0.03	0.00	0.00
		- subsidies on product	0.00	0.00	0.00	0.00
		- taxes on product	0.00	0.00	0.00	0.00
		- value at basic prices	0.05	0.03	0.00	0.00
02.1/3	02130	Soya				
		- value at producer prices	0.04	0.03	0.00	0.00
		- subsidies on product	0.00	0.00	0.00	0.00
		- taxes on product	0.00	0.00	0.00	0.00
		- value at basic prices	0.04	0.03	0.00	0.00

Table 2: Economic Accounts for Agriculture at current prices, in million Euros, cont.

02.3	02300	Raw tobacco				
		- value at producer prices	0.01	0.02	0.00	0.00
		- subsidies on product	0.00	0.00	0.00	0.00
		- taxes on product	0.00	0.00	0.00	0.00
		- value at basic prices	0.01	0.02	0.00	0.00
03	03000	FORAGE PLANTS				
		- value at producer prices	51.8	48.6	72.6	79.2
		- subsidies on product	0.0	0.0	0.0	0.0
		- taxes on product	0.0	0.0	0.0	0.0
		- value at basic prices	51.8	48.6	72.6	79.2
03.1	03100	Fodder maize				
		- value at producer prices	4.2	1.8	2.6	5.2
		- subsidies on product	0.0	0.0	0.0	0.0
		- taxes on product	0.0	0.0	0.0	0.0
		- value at basic prices	4.2	1.8	2.6	5.2
03.3	03900	Other forage plants				
		- value at producer prices	47.6	46.8	70.1	74.0
		- subsidies on product	0.0	0.0	0.0	0.0
		- taxes on product	0.0	0.0	0.0	0.0
		- value at basic prices	47.6	46.8	70.1	74.0
04	04000	VEGETABLES AND HORTICULTURAL PRODUCTS				
		- value at producer prices	118.7	110.4	126.3	132.0
		- subsidies on product	0.0	0.0	0.0	0.0
		- taxes on product	0.0	0.0	0.0	0.0
		- value at basic prices	118.7	110.4	126.3	132.0
04.1	04100	Fresh vegetables				
		- value at producer prices	118.7	110.4	126.3	132.0
		- subsidies on product	0.0	0.0	0.0	0.0
		- taxes on product	0.0	0.0	0.0	0.0
		- value at basic prices	118.7	110.4	126.3	132.0
04.1/1	04110	Cauliflower				
		- value at producer prices	0.2	0.1	0.7	0.1
		- subsidies on product	0.0	0.0	0.0	0.0
		- taxes on product	0.0	0.0	0.0	0.0
		- value at basic prices	0.2	0.1	0.7	0.1
04.1/2	04120	Tomatoes				
		- value at producer prices	34.9	21.3	33.3	37.0
		- subsidies on product	0.0	0.0	0.0	0.0
		- taxes on product	0.0	0.0	0.0	0.0
		- value at basic prices	34.9	21.3	33.3	37.0
04.1/3	04190	Other fresh vegetables				
		- value at producer prices	83.7	89.1	92.3	95.0
		- subsidies on product	0.0	0.0	0.0	0.0
		- taxes on product	0.0	0.0	0.0	0.0
		- value at basic prices	83.7	89.1	92.3	95.0
05	05000	POTATOES (including seeds)				
		- value at producer prices	20.2	22.2	26.8	28.8
		- subsidies on product	0.0	0.0	0.0	0.0
		- taxes on product	0.0	0.0	0.0	0.0
		- value at basic prices	20.2	22.2	26.8	28.8

Table 2: Economic Accounts for Agriculture at current prices, in million Euros, cont.

06	06000	FRUITS				
		- value at producer prices	31.3	30.7	28.1	36.4
		- subsidies on product	0.0	0.0	0.0	0.0
		- taxes on product	0.0	0.0	0.0	0.0
		- value at basic prices	31.3	30.7	28.1	36.4
06.1	06100	Fresh fruit				
		- value at producer prices	15.7	15.3	14.0	18.2
		- subsidies on product	0.0	0.0	0.0	0.0
		- taxes on product	0.0	0.0	0.0	0.0
		- value at basic prices	15.7	15.3	14.0	18.2
06.1/1	06110	Dessert apples				
		- value at producer prices	3.1	4.2	3.4	6.3
		- subsidies on product	0.0	0.0	0.0	0.0
		- taxes on product	0.0	0.0	0.0	0.0
		- value at basic prices	3.1	4.2	3.4	6.3
06.1/2	06120	Dessert pears				
		- value at producer prices	1.9	1.9	1.9	2.8
		- subsidies on product	0.0	0.0	0.0	0.0
		- taxes on product	0.0	0.0	0.0	0.0
		- value at basic prices	1.9	1.9	1.9	2.8
06.1/3	06130	Peaches				
		- value at producer prices	0.1	0.1	0.2	0.2
		- subsidies on product	0.0	0.0	0.0	0.0
		- taxes on product	0.0	0.0	0.0	0.0
		- value at basic prices	0.1	0.1	0.2	0.2
06.1/4	06190	Other fresh fruit				
		- value at producer prices	10.5	9.2	8.6	8.9
		- subsidies on product	0.0	0.0	0.0	0.0
		- taxes on product	0.0	0.0	0.0	0.0
		- value at basic prices	10.5	9.2	8.6	8.9
06.4	06400	Grapes				
		- value at producer prices	3.9	5.4	4.8	8.7
		- subsidies on product	0.0	0.0	0.0	0.0
		- taxes on product	0.0	0.0	0.0	0.0
		- value at basic prices	3.9	5.4	4.8	8.7
06.4/1	06410	Dessert grapes				
		- value at producer prices	2.7	3.5	3.0	7.5
		- subsidies on product	0.0	0.0	0.0	0.0
		- taxes on product	0.0	0.0	0.0	0.0
		- value at basic prices	2.7	3.5	3.0	7.5
06.4/2	06490	Other grapes				
		- value at producer prices	1.2	1.9	1.8	1.2
		- subsidies on product	0.0	0.0	0.0	0.0
		- taxes on product	0.0	0.0	0.0	0.0
		- value at basic prices	1.2	1.9	1.8	1.2
10	10000	CROP OUTPUT (01 TO 09)				
		- value at producer prices	278.8	267.7	330.8	366.6
		- subsidies on product	0.0	0.0	0.0	0.0
		- taxes on product	0.0	0.0	0.0	0.0
		- value at basic prices	278.8	267.7	330.8	366.6

Table 2: Economic Accounts for Agriculture at current prices, in million Euros, cont.

11	11000	ANIMALS				
		- value at producer prices	110.5	103.2	96.7	90.2
		- subsidies on product	0.0	0.0	0.0	0.0
		- taxes on product	0.0	0.0	0.0	0.0
		- value at basic prices	110.5	103.2	96.7	90.2
11.1	11100	Cattle				
		- value at producer prices	68.2	68.5	67.0	56.5
		- subsidies on product	0.0	0.0	0.0	0.0
		- taxes on product	0.0	0.0	0.0	0.0
		- value at basic prices	68.2	68.5	67.0	56.5
11.2	11200	Pigs				
		- value at producer prices	7.3	12.3	3.8	6.2
		- subsidies on product	0.0	0.0	0.0	0.0
		- taxes on product	0.0	0.0	0.0	0.0
		- value at basic prices	7.3	12.3	3.8	6.2
11.3	11300	Equines				
		- value at producer prices	0.0	0.2	-0.3	-0.6
		- subsidies on product	0.0	0.0	0.0	0.0
		- taxes on product	0.0	0.0	0.0	0.0
		- value at basic prices	0.0	0.2	-0.3	-0.6
11.4	11400	Sheep and goats				
		- value at producer prices	17.7	12.1	19.3	19.1
		- subsidies on product	0.0	0.0	0.0	0.0
		- taxes on product	0.0	0.0	0.0	0.0
		- value at basic prices	17.7	12.1	19.3	19.1
11.5	11500	Poultry				
		- value at producer prices	13.3	7.3	5.5	8.5
		- subsidies on product	0.0	0.0	0.0	0.0
		- taxes on product	0.0	0.0	0.0	0.0
		- value at basic prices	13.3	7.3	5.5	8.5
11.6	11900	Other animals				
		- value at producer prices	4.1	2.8	1.5	0.6
		- subsidies on product	0.0	0.0	0.0	0.0
		- taxes on product	0.0	0.0	0.0	0.0
		- value at basic prices	4.1	2.8	1.5	0.6
12	12000	ANIMAL PRODUCTS				
		- value at producer prices	149.3	162.3	163.0	175.2
		- subsidies on product	0.0	0.0	0.0	0.0
		- taxes on product	0.0	0.0	0.0	0.0
		- value at basic prices	149.3	162.3	163.0	175.2
12.1	12100	Milk				
		- value at producer prices	135.0	148.8	150.0	160.8
		- subsidies on product	0.0	0.0	0.0	0.0
		- taxes on product	0.0	0.0	0.0	0.0
		- value at basic prices	135.0	148.8	150.0	160.8
12.2	12200	Eggs				
		- value at producer prices	14.2	13.5	13.0	14.4
		- subsidies on product	0.0	0.0	0.0	0.0
		- taxes on product	0.0	0.0	0.0	0.0
		- value at basic prices	14.2	13.5	13.0	14.4
12.3	12900	Other animal products				
		- value at producer prices	0.1	0.1	0.1	0.1
		- subsidies on product	0.0	0.0	0.0	0.0
		- taxes on product	0.0	0.0	0.0	0.0
		- value at basic prices	0.1	0.1	0.1	0.1
12.3/1	12910	Raw wool				
		- value at producer prices	0.1	0.1	0.1	0.1
		- subsidies on product	0.0	0.0	0.0	0.0
		- taxes on product	0.0	0.0	0.0	0.0
		- value at basic prices	0.1	0.1	0.1	0.1
13	13000	ANIMAL OUTPUT (11+12)				
		- value at producer prices	259.8	265.5	259.7	265.4
		- subsidies on product	0.0	0.0	0.0	0.0
		- taxes on product	0.0	0.0	0.0	0.0
		- value at basic prices	259.8	265.5	259.7	265.4
14	14000	AGRICULTURAL GOODS OUTPUT (10+13)				
		- value at producer prices	538.6	533.3	590.5	632.1
		- subsidies on product	0.0	0.0	0.0	0.0
		- taxes on product	0.0	0.0	0.0	0.0
		- value at basic prices	538.6	533.3	590.5	632.1

Table 2: Economic Accounts for Agriculture at current prices, in million Euros, cont.

16	16000	AGRICULTURAL OUTPUT (14+15)				
		- value at producer prices	538.6	533.3	590.5	632.1
		- subsidies on product	0.0	0.0	0.0	0.0
		- taxes on product	0.0	0.0	0.0	0.0
		- value at basic prices	538.6	533.3	590.5	632.1
18	18000	OUTPUT OF THE AGRICULTURAL 'INDUSTRY' (16+17)				
		- value at producer prices	538.6	533.3	590.5	632.1
		- subsidies on product	0.0	0.0	0.0	0.0
		- taxes on product	0.0	0.0	0.0	0.0
		- value at basic prices	538.6	533.3	590.5	632.1
19	19000	TOTAL INTERMEDIATE CONSUMPTION				
		- value	159.5	172.1	199.0	234.0
19.01	19010	SEEDS AND PLANTING STOCK				
		- value	8.0	9.4	11.3	10.8
19.01/1	19011	- seeds and planting stock supplied by other agricultural holdings				
		- value	0.4	0.5	0.6	0.5
19.01/2	19012	- seeds and planting stock purchased from outside the agricultural 'industry'				
		- value	7.6	8.9	10.7	10.3
19.02	19020	ENERGY; LUBRICANTS				
		- value	13.6	14.2	13.4	15.8
19.02/1	19021	- electricity				
		- value	2.1	1.5	1.5	1.1
19.02/3	19023	- other fuels and propellants				
		- value	11.5	12.7	11.8	14.7
19.03	19030	FERTILISERS AND SOIL IMPROVERS				
		- value	17.7	19.2	20.1	33.7
19.03/1	19031	- fertilisers supplied by other agricultural holdings				
		- value	0.3	0.5	0.7	1.1
19.03/2	19032	- fertilisers purchased from outside the agricultural 'industry'				
		- value	17.4	18.7	19.4	32.6
19.04	19040	PLANT PROTECTION PRODUCTS AND PESTICIDES				
		- value	2.4	2.8	2.8	3.4
19.05	19050	VETERINARY EXPENSES				
		- value	6.6	9.2	11.2	11.3
19.06	19060	ANIMAL FEEDINGSTUFFS				
		- value	75.1	76.2	99.7	115.6
19.06/2	19062	- feedingstuffs purchased from outside the agricultural 'industry'				
		- value	9.6	13.3	12.3	14.0
19.06/3	19063	- feedingstuffs produced and consumed by the same holding				
		- value	65.5	62.9	87.4	101.6
19.07	19070	MAINTENANCE OF MATERIALS				
		- value	5.4	6.6	5.6	5.2
19.08	19080	MAINTENANCE OF BUILDINGS				
		- value	1.6	2.7	2.1	1.0
19.09	19090	AGRICULTURAL SERVICES				
		- value	13.6	15.1	14.3	14.9
19.11	19900	OTHER GOODS AND SERVICES				
		- value	15.5	16.5	18.6	22.3
20	20000	GROSS VALUE ADDED AT BASIC PRICES (18-19)				
		- value	379.1	361.1	391.5	398.0
21	21000	FIXED CAPITAL CONSUMPTION				
		- value	63.0	65.3	68.7	74.2

Table 2: Economic Accounts for Agriculture at current prices, in million Euros, cont.

21.1	21100	EQUIPMENT					
		- value	41.0	44.0	44.0	48.4	
21.2	21200	BUILDINGS					
		- value	21.1	20.4	23.8	24.6	
21.3	21300	PLANTATIONS					
		- value	0.4	0.4	0.4	0.5	
21.4	21900	OTHERS					
		- value	0.5	0.5	0.6	0.6	
22	22000	NET VALUE ADDED AT BASIC PRICES (20-21)					
		- value	316.1	295.8	322.8	323.8	
23	23000	COMPENSATION OF EMPLOYEES					
		- value	4.5	3.7	3.5	4.0	
26	26000	FACTOR INCOME (22-24+25)					
		- value	316.1	295.8	322.8	323.8	
27	27000	OPERATING SURPLUS / MIXED INCOME (22-23-24+25)					
		- value	311.6	292.1	319.3	319.8	
28	28000	RENTS AND OTHER REAL ESTATE RENTAL CHARGES TO BE PAID					
		- value	1.7	1.9	1.4	2.2	
29	29000	INTEREST PAID					
		- value	0.4	0.4	0.8	0.9	
31	31000	ENTREPRENEURIAL INCOME (27-28-29+30)					
		- value	309.4	289.8	317.1	316.8	
32	32000	GFCF IN AGRICULTURAL PRODUCTS					
		- value	23.8	25.6	-8.0	9.2	
32.1	32100	GFCF IN PLANTATIONS					
		- value	0.5	0.5	0.5	0.7	
32.2	32200	GFCF IN ANIMALS					
		- value	23.3	25.1	-8.4	8.5	
33	33000	GFCF IN NON-AGRICULTURAL PRODUCTS					
		- value	74.9	92.0	92.0	96.2	
33.1	33100	GFCF IN MATERIALS					
		- value	50.4	68.3	64.3	67.7	
33.2	33200	GFCF IN BUILDINGS					
		- value	23.7	23.0	26.7	27.7	
33.3	33900	OTHER GFCF					
		- value	0.8	0.8	0.9	0.9	
34	34000	GROSS FIXED CAPITAL FORMATION (EXCLUDING DEDUCTIBLE VAT) (32+33)					
		- value	98.7	117.7	84.0	105.4	
35	35000	NET FIXED CAPITAL FORMATION (EXCLUDING DEDUCTIBLE VAT) (34-21)					
		- value	35.6	52.4	15.3	31.2	
36	36000	CHANGES IN STOCKS					
		- value	21.8	4.9	-18.5	7.0	

Table 3: Economic Accounts for Agriculture at constant prices, in million Euros

Item	Code New Cronos	Economic Accounts for Agriculture	2005	2006	2007	2008
01	01000	CEREALS (including seeds)				
		- value at producer prices	0.0	49.9	42.3	111.9
		- subsidies on product	0.0	0.0	0.0	0.0
		- taxes on product	0.0	0.0	0.0	0.0
		- value at basic prices	0.0	49.9	42.3	111.9
01.1	01100	Wheat and spelt				
		- value at producer prices	0.0	31.6	31.1	79.6
		- subsidies on product	0.0	0.0	0.0	0.0
		- taxes on product	0.0	0.0	0.0	0.0
		- value at basic prices	0.0	31.6	31.1	79.6
01.1/1	01110	Soft wheat and spelt				
		- value at producer prices	0.0	31.6	31.1	79.6
		- subsidies on product	0.0	0.0	0.0	0.0
		- taxes on product	0.0	0.0	0.0	0.0
		- value at basic prices	0.0	31.6	31.1	79.6
01.2	01200	Rye and meslin				
		- value at producer prices	0.0	0.1	0.2	0.4
		- subsidies on product	0.0	0.0	0.0	0.0
		- taxes on product	0.0	0.0	0.0	0.0
		- value at basic prices	0.0	0.1	0.2	0.4
01.3	01300	Barley				
		- value at producer prices	0.0	0.9	0.6	2.1
		- subsidies on product	0.0	0.0	0.0	0.0
		- taxes on product	0.0	0.0	0.0	0.0
		- value at basic prices	0.0	0.9	0.6	2.1
01.4	01400	Oats and summer cereal mixtures				
		- value at producer prices	0.0	1.1	1.4	2.9
		- subsidies on product	0.0	0.0	0.0	0.0
		- taxes on product	0.0	0.0	0.0	0.0
		- value at basic prices	0.0	1.1	1.4	2.9
01.5	01500	Grain maize				
		- value at producer prices	0.0	16.2	8.9	26.8
		- subsidies on product	0.0	0.0	0.0	0.0
		- taxes on product	0.0	0.0	0.0	0.0
		- value at basic prices	0.0	16.2	8.9	26.8
02	02000	INDUSTRIAL CROPS				
		- value at producer prices	0.00	0.04	0.00	0.00
		- subsidies on product	0.00	0.00	0.00	0.00
		- taxes on product	0.00	0.00	0.00	0.00
		- value at basic prices	0.00	0.04	0.00	0.00
02.1	02100	Oil seeds and oleaginous fruits (including seeds)				
		- value at producer prices	0.00	0.03	0.00	0.00
		- subsidies on product	0.00	0.00	0.00	0.00
		- taxes on product	0.00	0.00	0.00	0.00
		- value at basic prices	0.00	0.03	0.00	0.00
02.1/3	02130	Soya				
		- value at producer prices	0.0	0.03	0.00	0.00
		- subsidies on product	0.0	0.00	0.00	0.00
		- taxes on product	0.0	0.00	0.00	0.00
		- value at basic prices	0.0	0.03	0.00	0.00
02.3	02300	Raw tobacco				
		- value at producer prices	0.0	0.01	0.00	0.00
		- subsidies on product	0.0	0.00	0.00	0.00
		- taxes on product	0.0	0.00	0.00	0.00
		- value at basic prices	0.0	0.01	0.00	0.00

Table 3: Economic Accounts for Agriculture at constant prices, in million Euros, contin.

03	03000	FORAGE PLANTS				
		- value at producer prices	0.0	1.9	1.6	5.5
		- subsidies on product	0.0	0.0	0.0	0.0
		- taxes on product	0.0	0.0	0.0	0.0
		- value at basic prices	0.0	1.9	1.6	5.5
03.1	03100	Fodder maize				
		- value at producer prices	0.0	1.9	1.6	5.5
		- subsidies on product	0.0	0.0	0.0	0.0
		- taxes on product	0.0	0.0	0.0	0.0
		- value at basic prices	0.0	1.9	1.6	5.5
04	04000	VEGETABLES AND HORTICULTURAL PRODUCTS				
		- value at producer prices	0.0	110.4	103.5	151.6
		- subsidies on product	0.0	0.0	0.0	0.0
		- taxes on product	0.0	0.0	0.0	0.0
		- value at basic prices	0.0	110.4	103.5	151.6
04.1	04100	Fresh vegetables				
		- value at producer prices	0.0	110.4	103.5	151.6
		- subsidies on product	0.0	0.0	0.0	0.0
		- taxes on product	0.0	0.0	0.0	0.0
		- value at basic prices	0.0	110.4	103.5	151.6
04.1/1	04110	Cauliflower				
		- value at producer prices	0.0	0.1	0.7	0.1
		- subsidies on product	0.0	0.0	0.0	0.0
		- taxes on product	0.0	0.0	0.0	0.0
		- value at basic prices	0.0	0.1	0.7	0.1
04.1/2	04120	Tomatoes				
		- value at producer prices	0.0	20.8	28.4	45.7
		- subsidies on product	0.0	0.0	0.0	0.0
		- taxes on product	0.0	0.0	0.0	0.0
		- value at basic prices	0.0	20.8	28.4	45.7
04.1/3	04190	Other fresh vegetables				
		- value at producer prices	0.0	89.5	74.4	105.8
		- subsidies on product	0.0	0.0	0.0	0.0
		- taxes on product	0.0	0.0	0.0	0.0
		- value at basic prices	0.0	89.5	74.4	105.8
05	05000	POTATOES (including seeds)				
		- value at producer prices	0.0	17.0	28.7	29.0
		- subsidies on product	0.0	0.0	0.0	0.0
		- taxes on product	0.0	0.0	0.0	0.0
		- value at basic prices	0.0	17.0	28.7	29.0
06	06000	FRUITS				
		- value at producer prices	0.0	20.6	17.0	29.0
		- subsidies on product	0.0	0.0	0.0	0.0
		- taxes on product	0.0	0.0	0.0	0.0
		- value at basic prices	0.0	20.6	17.0	29.0
06.1	06100	Fresh fruit				
		- value at producer prices	0.0	15.1	12.7	20.0
		- subsidies on product	0.0	0.0	0.0	0.0
		- taxes on product	0.0	0.0	0.0	0.0
		- value at basic prices	0.0	15.1	12.7	20.0
06.1/1	06110	Dessert apples				
		- value at producer prices	0.0	4.5	2.8	6.5
		- subsidies on product	0.0	0.0	0.0	0.0
		- taxes on product	0.0	0.0	0.0	0.0
		- value at basic prices	0.0	4.5	2.8	6.5

**Table 3: Economic Accounts for Agriculture at constant prices, in million Euros
contin.**

06.1/2	06120	Dessert pears				
		- value at producer prices	0.0	1.3	1.7	3.0
		- subsidies on product	0.0	0.0	0.0	0.0
		- taxes on product	0.0	0.0	0.0	0.0
		- value at basic prices	0.0	1.3	1.7	3.0
06.1/3	06130	Peaches				
		- value at producer prices	0.0	0.1	0.2	0.2
		- subsidies on product	0.0	0.0	0.0	0.0
		- taxes on product	0.0	0.0	0.0	0.0
		- value at basic prices	0.0	0.1	0.2	0.2
06.1/4	06190	Other fresh fruit				
		- value at producer prices	0.0	9.3	8.0	10.3
		- subsidies on product	0.0	0.0	0.0	0.0
		- taxes on product	0.0	0.0	0.0	0.0
		- value at basic prices	0.0	9.3	8.0	10.3
06.4	06400	Grapes				
		- value at producer prices	0.0	5.5	4.3	9.0
		- subsidies on product	0.0	0.0	0.0	0.0
		- taxes on product	0.0	0.0	0.0	0.0
		- value at basic prices	0.0	5.5	4.3	9.0
06.4/1	06410	Dessert grapes				
		- value at producer prices	0.0	3.6	2.6	7.8
		- subsidies on product	0.0	0.0	0.0	0.0
		- taxes on product	0.0	0.0	0.0	0.0
		- value at basic prices	0.0	3.6	2.6	7.8
06.4/2	06490	Other grapes				
		- value at producer prices	0.0	1.9	1.7	1.2
		- subsidies on product	0.0	0.0	0.0	0.0
		- taxes on product	0.0	0.0	0.0	0.0
		- value at basic prices	0.0	1.9	1.7	1.2
10	10000	CROP OUTPUT (01 TO 09)				
		- value at producer prices	0.0	244.8	235.6	402.7
		- subsidies on product	0.0	0.0	0.0	0.0
		- taxes on product	0.0	0.0	0.0	0.0
		- value at basic prices	0.0	244.8	235.6	402.7
11	11000	ANIMALS				
		- value at producer prices	0.0	101.2	98.1	79.4
		- subsidies on product	0.0	0.0	0.0	0.0
		- taxes on product	0.0	0.0	0.0	0.0
		- value at basic prices	0.0	101.2	98.1	79.4
11.1	11100	Cattle				
		- value at producer prices	0.0	66.1	69.1	51.0
		- subsidies on product	0.0	0.0	0.0	0.0
		- taxes on product	0.0	0.0	0.0	0.0
		- value at basic prices	0.0	66.1	69.1	51.0

Table 3: Economic Accounts for Agriculture at constant prices, in million Euros, contin.

11.2	11200	Pigs				
		- value at producer prices	0.0	12.3	3.6	5.1
		- subsidies on product	0.0	0.0	0.0	0.0
		- taxes on product	0.0	0.0	0.0	0.0
		- value at basic prices	0.0	12.3	3.6	5.1
11.3	11300	Equines				
		- value at producer prices	0.0	0.2	-0.3	-0.6
		- subsidies on product	0.0	0.0	0.0	0.0
		- taxes on product	0.0	0.0	0.0	0.0
		- value at basic prices	0.0	0.2	-0.3	-0.6
11.4	11400	Sheep and goats				
		- value at producer prices	0.0	12.7	18.9	17.1
		- subsidies on product	0.0	0.0	0.0	0.0
		- taxes on product	0.0	0.0	0.0	0.0
		- value at basic prices	0.0	12.7	18.9	17.1
11.5	11500	Poultry				
		- value at producer prices	0.0	6.9	5.3	6.2
		- subsidies on product	0.0	0.0	0.0	0.0
		- taxes on product	0.0	0.0	0.0	0.0
		- value at basic prices	0.0	6.9	5.3	6.2
11.6	11900	Other animals				
		- value at producer prices	0.0	2.9	1.5	0.5
		- subsidies on product	0.0	0.0	0.0	0.0
		- taxes on product	0.0	0.0	0.0	0.0
		- value at basic prices	0.0	2.9	1.5	0.5
12	12000	ANIMAL PRODUCTS				
		- value at producer prices	0.0	154.8	162.4	151.5
		- subsidies on product	0.0	0.0	0.0	0.0
		- taxes on product	0.0	0.0	0.0	0.0
		- value at basic prices	0.0	154.8	162.4	151.5
12.1	12100	Milk				
		- value at producer prices	0.0	141.2	149.0	137.3
		- subsidies on product	0.0	0.0	0.0	0.0
		- taxes on product	0.0	0.0	0.0	0.0
		- value at basic prices	0.0	141.2	149.0	137.3
12.2	12200	Eggs				
		- value at producer prices	0.0	13.5	13.4	14.1
		- subsidies on product	0.0	0.0	0.0	0.0
		- taxes on product	0.0	0.0	0.0	0.0
		- value at basic prices	0.0	13.5	13.4	14.1
12.3	12900	Other animal products				
		- value at producer prices	0.0	0.1	0.1	0.1
		- subsidies on product	0.0	0.0	0.0	0.0
		- taxes on product	0.0	0.0	0.0	0.0
		- value at basic prices	0.0	0.1	0.1	0.1
12.3/1	12910	Raw wool				
		- value at producer prices	0.0	0.1	0.1	0.1
		- subsidies on product	0.0	0.0	0.0	0.0
		- taxes on product	0.0	0.0	0.0	0.0
		- value at basic prices	0.0	0.1	0.1	0.1

Table 3: Economic Accounts for Agriculture at constant prices, in million Euros, contin.

13	13000	ANIMAL OUTPUT (11+12)				
		- value at producer prices	0.0	256.0	260.5	230.9
		- subsidies on product	0.0	0.0	0.0	0.0
		- taxes on product	0.0	0.0	0.0	0.0
		- value at basic prices	0.0	256.0	260.5	230.9
14	14000	AGRICULTURAL GOODS OUTPUT (10+13)				
		- value at producer prices	0.0	500.8	496.1	633.6
		- subsidies on product	0.0	0.0	0.0	0.0
		- taxes on product	0.0	0.0	0.0	0.0
		- value at basic prices	0.0	500.8	496.1	633.6
16	16000	AGRICULTURAL OUTPUT (14+15)				
		- value at producer prices	0.0	500.8	496.1	633.6
		- subsidies on product	0.0	0.0	0.0	0.0
		- taxes on product	0.0	0.0	0.0	0.0
		- value at basic prices	0.0	500.8	496.1	633.6
18	18000	OUTPUT OF THE AGRICULTURAL 'INDUSTRY' (16+17)				
		- value at producer prices	0.0	500.8	496.1	633.6
		- subsidies on product	0.0	0.0	0.0	0.0
		- taxes on product	0.0	0.0	0.0	0.0
		- value at basic prices	0.0	500.8	496.1	633.6
19	19000	TOTAL INTERMEDIATE CONSUMPTION				
		- value	0.0	177.4	246.1	299.3
19.01	19010	SEEDS AND PLANTING STOCK				
		- value	0.0	8.7	12.5	13.5
19.01/1	19011	- seeds and planting stock supplied by other agricultural holdings				
		- value	0.0	0.5	0.5	0.4
19.01/2	19012	- seeds and planting stock purchased from outside the agricultural 'industry'				
		- value	0.0	8.2	12.0	13.1
19.02	19020	ENERGY; LUBRICANTS				
		- value	0.0	13.3	13.4	13.9
19.02/1	19021	- electricity				
		- value	0.0	1.5	1.6	1.1
19.02/3	19023	- other fuels and propellants				
		- value	0.0	11.7	11.7	12.8
19.03	19030	FERTILISERS AND SOIL IMPROVERS				
		- value	0.0	20.8	21.9	50.5
19.03/1	19031	- fertilisers supplied by other agricultural holdings				
		- value	0.0	0.5	0.6	0.7
19.03/2	19032	- fertilisers purchased from outside the agricultural 'industry'				
		- value	0.0	20.4	21.3	49.8
19.04	19040	PLANT PROTECTION PRODUCTS AND PESTICIDES				
		- value	0.0	3.0	2.8	3.2
19.05	19050	VETERINARY EXPENSES				
		- value	0.0	10.8	11.0	11.6
19.06	19060	ANIMAL FEEDINGSTUFFS				
		- value	0.0	76.7	138.9	155.4
19.06/1	19061	- feedingstuffs supplied by other agricultural holdings				
		- value	0.0	0.0	0.0	0.0
19.06/2	19062	- feedingstuffs purchased from outside the agricultural 'industry'				
		- value	0.0	13.4	17.2	18.8

Table 3: Economic Accounts for Agriculture at constant prices, in million Euros, cont.

19.06/3	19063	- feedingstuffs produced and consumed by the same holding				
		- value	0.0	63.3	121.7	136.6
19.07	19070	MAINTENANCE OF MATERIALS				
		- value	0.0	6.6	5.8	5.8
19.08	19080	MAINTENANCE OF BUILDINGS				
		- value	0.0	6.6	5.8	5.8
19.09	19090	AGRICULTURAL SERVICES				
		- value	0.0	14.8	14.7	15.8
19.10	19900	OTHER GOODS AND SERVICES				
		- value	0.0	16.1	19.2	23.7
20	20000	GROSS VALUE ADDED AT BASIC PRICES (18-19)				
		- value	0.0	323.4	250.0	334.4
21	21000	FIXED CAPITAL CONSUMPTION				
		- value	0.0	66.3	67.1	76.1
21.1	21100	EQUIPMENT				
		- value	0.0	44.7	42.9	49.7
21.2	21200	BUILDINGS				
		- value	0.0	20.8	23.2	25.2
21.3	21300	PLANTATIONS				
		- value	0.0	0.4	0.4	0.6
21.4	21900	OTHERS				
		- value	0.0	0.5	0.6	0.6
22	22000	NET VALUE ADDED AT BASIC PRICES (20-21)				
		- value	0.0	257.1	182.9	258.3
23	23000	COMPENSATION OF EMPLOYEES				
		- value	0.0	3.7	3.7	4.4
26	26000	FACTOR INCOME (22-24+25)				
		- value	0.0	257.1	182.9	258.3
27	27000	OPERATING SURPLUS / MIXED INCOME (22-23-24+25)				
		- value	0.0	253.3	179.2	253.9
28	28000	RENTS AND OTHER REAL ESTATE RENTAL CHARGES TO BE PAID				
		- value	0.0	1.9	1.4	2.4
29	29000	INTEREST PAID				
		- value	0.0	0.4	0.9	0.9
31	31000	ENTREPRENEURIAL INCOME (27-28-29+30)				
		- value	0.0	251.0	177.0	250.5
32	32000	GFCF IN AGRICULTURAL PRODUCTS				
		- value	0.0	26.1	-7.8	9.4
32.1	32100	GFCF IN PLANTATIONS				
		- value	0.0	0.5	0.5	0.7
32.2	32200	GFCF IN ANIMALS				
		- value	0.0	25.5	-8.2	8.7
33	33000	GFCF IN NON-AGRICULTURAL PRODUCTS				
		- value	0.0	93.5	89.8	98.7
33.1	33100	GFCF IN MATERIALS				
		- value	0.0	69.4	62.8	69.4
33.2	33200	GFCF IN BUILDINGS				
		- value	0.0	23.3	26.1	28.4
33.3	33900	OTHER GFCF				
		- value	0.0	0.8	0.9	0.9
34	34000	GROSS FIXED CAPITAL FORMATION (EXCLUDING DEDUCTIBLE VAT) (32+33)				
		- value	0.0	119.6	82.0	108.2
35	35000	NET FIXED CAPITAL FORMATION (EXCLUDING DEDUCTIBLE VAT) (34-21)				
		- value	0.0	53.2	15.0	32.0
36	36000	CHANGES IN STOCKS				
		- value	0.0	5.0	-18.1	7.2

Methodology of Economic Accounts for Agriculture

The EAA are a satellite account of the European System of Integrated Economic Accounts (ESA), an accounting system that follows the UN recommendations on national accounts. They cover the agricultural products and services produced during the accounting period that are sold by agricultural units, held in stocks on farms, or used for further processing by agricultural producers.

EAA is intended to highlight the economic development of the national agricultural sector and can be used as a basis for agricultural policy assessment of the agricultural sector changes.

The concepts of the Economic Accounts for Agriculture are adapted to the particular nature of the agricultural production: for example, the EAA include not only the production of grapes and olives but also the production of wine and olive oil by agricultural producers, as well as information on intra-unit consumption of crop products used in animal feed, output accounted for own-account production of fixed capital goods and own final consumption of agricultural units. EAA data can be used to calculate income indicators for the agricultural sector.

The EAA reports production values and costs to both the producer price and base price. EAA to the base price includes direct payments (subsidies), which are not included in the EAA to the producer price. Moreover, direct payments are divided into product-resp. production-related direct payments. Production-related direct payments, such as environmental, are reported under a separate item.

Definitions and explanations

The EAA includes:

+ The value of crop output
+ The value of livestock production
+ Income from agricultural services
= Total output

- Intermediate consumption
= Gross value added
- Consumption of fixed capital
= Net value added

+ Other subsidies on production
= Factor income

- Compensation of employees
= Net operating surplus

- Rent
- Interest
= Net entrepreneurial income

Net operating surplus measures the yield from land, capital and unpaid labour. It is the balance of the generation of income account which indicates the distribution of income between the factors of production and the general government sector. The net value added and net operating surplus are calculated for the industries.

Net value added of the agricultural primary production measures the value created by all the agricultural units after the consumption of fixed capital.

Gross value added of the agricultural primary production measures the results of the production. It is the difference between of the value output and the value of intermediate consumption.

Statistical Office of Kosovo

short description

Statistical Office of Kosovo is a professional institution which deals with collection, processing and publication of official statistical data. As such acts since 1948 and has passed through several historical stages, structured according to state regulation of those times.

On 2 August 1999, the Office has resumed his professional work (after nine years of interruption of all statistical series detrimental to the interest of Kosovo), as an independent institution under the Ministry of Public Administration. Office is funded by the Kosovo Consolidated Budget, but also by donors for specific projects and for technical professional support.

Statistical Office of Kosovo operates under Regulation 2001/14 which entered into force on 2 July 2001. Law on official statistics is in process for approval. Strategic development plan 2009-2013 is the middle term implementation for the development of statistical system in correlation with the European Union statistics (EUROSTAT). **Statistical Office of Kosovo** has this organizational structure: production departments; (Department of Economic statistics and National Accounts, Department of Population statistics, Department of Agriculture and Environmental statistics and Department of Social statistics. **Support Departments;** (Department of Methodology and Information Technology, Department of Administration. **Within the Office we also established** Office of the Population Census, Huseholds and Dwellings. **Regional Offices;** Gjakove, Gjilan, Mitrovica, Peja, Prizren, Prishtina and Ferizaj

Number of employees and budget are still limited. Employees are total of 134 workers, of them 96 (71.6%) at the headquarters of the Office, while in the Regional Offices, 38 (28.4%), with qualifying structure, 65.4% with university education to 34.6% with secondary education.

We have professional and technical cooperation with all ministries of the Government of Kosovo, especially with the Ministry of Economy and Finance, Central Bank of Kosovo, with international institutions, EUROSTAT, International Monetary Fund, World Bank, Sweden's SIDA, DFID, UNFPA, UNDP, UNIVEF, and the statistics of countries in the region.

Statistical Office of Kosovo almost completely covers the territory of Kosovo, based on the statistical structure of the enumeration areas as the basic unit and sole in the country from which it gets first hand information. All surveys conducted in the field use the extension of the samples in these enumeration areas but also a statistical methodology according to international recommendations. During the collection of statistical data and reports from reporting entities are involved professionals, technicians, administrators, servants of the country offices, field enumerators from regional offices, etc.

The mission of the Office; to meet the needs of users with qualitative statistical data, objective, in time and space so that users have reliable base to conduct regular analysis in the interest of planning and project development at the municipal and country level. To support government institutions, scientific institutes, research academies, businesses in order to provide proper information for decision-makers and other users in Kosovo.

- **Address:** STATISTICAL OFFICE OF KOSOVO,
Street. "Zenel Salihu", No. 4, 10000 Prishtina
- **Telephone:** +381 (0) 38 235 111,
CEO: +381 (0) 38 235 111 102
- **Fax::** +381 (0) 38 235 033
- **Website:** <http://esk.rks-gov.net>
- **E-mail:** agriculture@ks-gov.net